




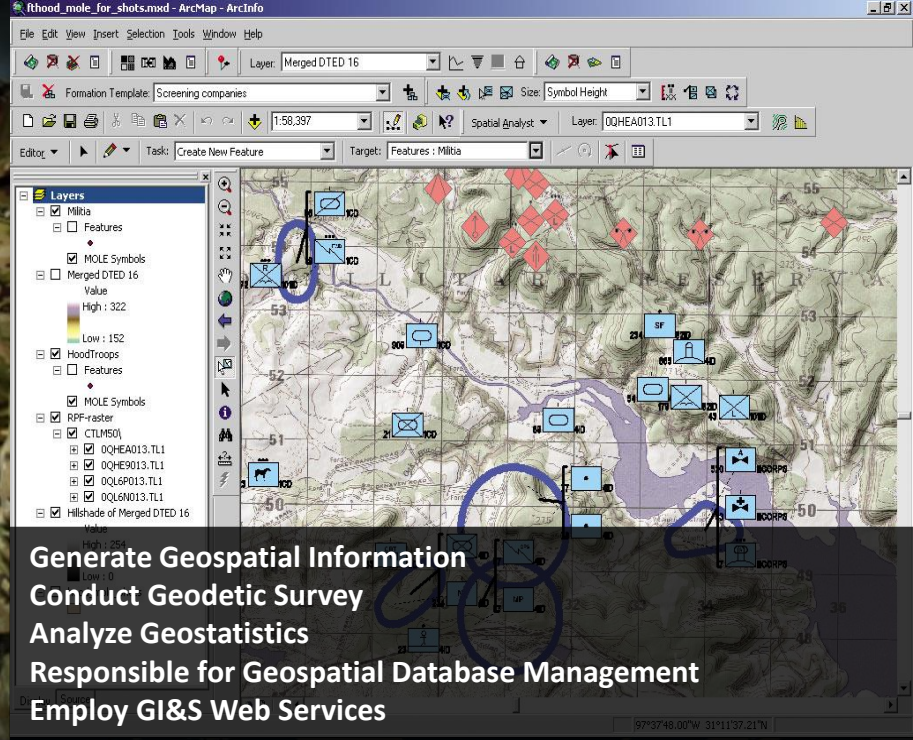


# Geospatial Engineering



-  Analyze the terrain
-  Support all warfighting functions
-  Facilitate commander's understanding of the OE
-  Essential part of the Army's modernization strategy
-  Engineer development opportunities (GEO-DP)



- Generate Geospatial Information
- Conduct Geodetic Survey
- Analyze Geostatistics
- Responsible for Geospatial Database Management
- Employ GI&S Web Services



## Provide Support for Warfighter Operations

- Movement and Maneuver
- Force Protection
- Fires
- Intelligence



## Civilian Partners

- National Geospatial Intelligence Agency (NGA)
- United States Geological Survey (USGS)
- Environmental Systems Research Institute (ESRI)