



National Guard (NG) CBRN Response Enterprise (CRE) Overview



This brief provides an overview of the National Guard (NG) Chemical, Biological, Radiological, and Nuclear (CBRN) Response Enterprise (CRE) support concepts and capabilities.



- **Mission**
- **NG CRE History**
- **CRE Elements**
- **Weapons of Mass Destruction - Civil Support Team (WMD-CST)**
- **CBRN Enhanced Response Force Package (CERFP)**
- **Homeland Response Force (HRF)**
- **Summary**
- **Questions**



Joint Publication 3-41

Chemical, Biological, Radiological, and Nuclear Consequence Management

21 June 2012

ATP 3-11.47
AFTTP 3-2.79

CHEMICAL, BIOLOGICAL, RADIOLOGICAL, NUCLEAR, AND HIGH-YIELD EXPLOSIVES ENHANCED RESPONSE FORCE PACKAGE (CERFP)/HOMELAND RESPONSE FORCE (HRF) OPERATIONS

APRIL 2013

DISTRIBUTION RESTRICTION: Distribution authorized to U.S. government agencies and their contractors only due to the sensitive nature of information within this manual. This determination was made on 30 August 2009. Other requests for this document must be referred to Commandant, U.S. Army Chemical, Biological, Radiological, and Nuclear School, ATTN: ATSNZ, 14010 MSCOE Loop, Suite 2617, Fort Leonard Wood, Missouri 65473.

DESTRUCTION NOTICE: Destroy by any method that will prevent the disclosure of contents or reconstruction of the document.

HEADQUARTERS, DEPARTMENT OF THE ARMY

ATP 3-11.48
AFTTP 3-2.81

WEAPONS OF MASS DESTRUCTION—CIVIL SUPPORT TEAM OPERATIONS

20 May 2014

DISTRIBUTION RESTRICTION: Distribution authorized to U.S. Government agencies and their contractors only due to the sensitive nature of information within this manual. This determination was made on 30 August 2009. Other requests for this document must be referred to Commandant, U.S. Army Chemical, Biological, Radiological, and Nuclear School.

DESTRUCTION NOTICE: Destroy by any method that will prevent disclosure of contents or reconstruction of the document.

Headquarters, Department of the Army

NATIONAL GUARD BUREAU

HOMELAND RESPONSE FORCE (HRF)

CHEMICAL, BIOLOGICAL, RADIOLOGICAL, NUCLEAR, AND HIGH-YIELD EXPLOSIVES ENHANCED RESPONSE FORCE PACKAGE (CERFP)

CONCEPT OF OPERATIONS (CONOPS)

10 October 2019

CHIEF OF THE NATIONAL GUARD BUREAU MANUAL

RGB-J3/4/7
DISTRIBUTION: S
CNGEM 3501.00
10 January 2020

WEAPONS OF MASS DESTRUCTION—CIVIL SUPPORT TEAM MANAGEMENT

References: See Enclosure K.

1. Purpose. This manual provides procedural guidance for managing National Guard (NG) Weapons of Mass Destruction—Civil Support Teams (WMD-CSTs) in accordance with (IAW) references a through ooooo.

2. Cancellation. None.

3. Applicability. This manual applies to all elements of the NG. It does not apply to NG forces serving under the provisions of reference b.

4. Procedures. WMD-CSTs are specifically authorized by Congress in reference c to perform duties in a Title 32 status within the 54 States, Territories, and the District of Columbia, in support of emergency preparedness programs to prepare for or respond to any emergency as prescribed by references a and c.

a. By law, WMD-CSTs will respond to the use or threatened use of a WMD; a terrorist attack or threatened terrorist attack; the intentional or unintentional release of nuclear, biological, radiological, or toxic poisonous chemical materials; and natural or manmade disasters in the United States that result in, or could result in, catastrophic loss of life or property.

b. WMD-CSTs function per the Department of Homeland Security's National Response Framework's tiered emergency response system and operate within the National Incident Management System. They provide this support by identifying hazards, assessing current and projected consequences, advising on response measures, and assisting with appropriate requests for additional support. As the State Governors' forces for all hazards, they provide direct support to the front lines of local, tribal, State, and Federal emergency response organizations. WMD-CSTs may be federalized and deployed as part of a Federal response to an incident in or outside their assigned State, Territory, or the District of Columbia.

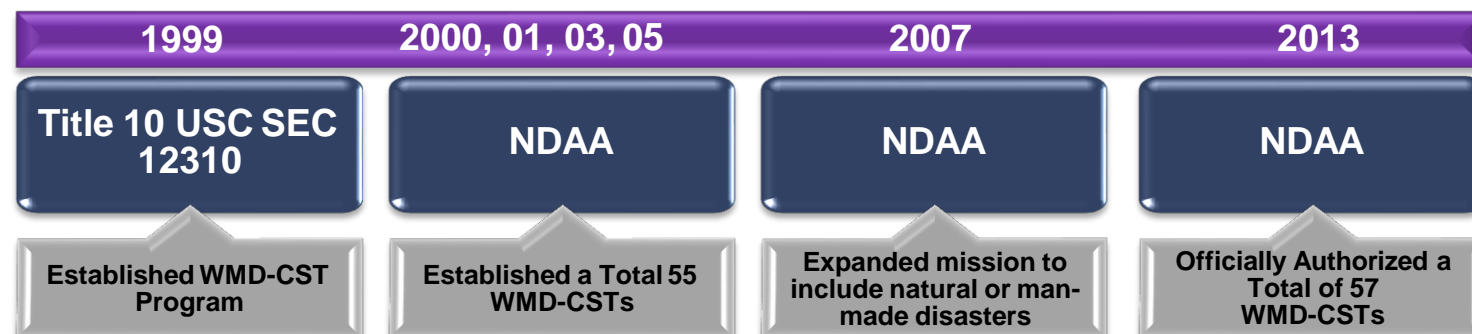
NG CRE History



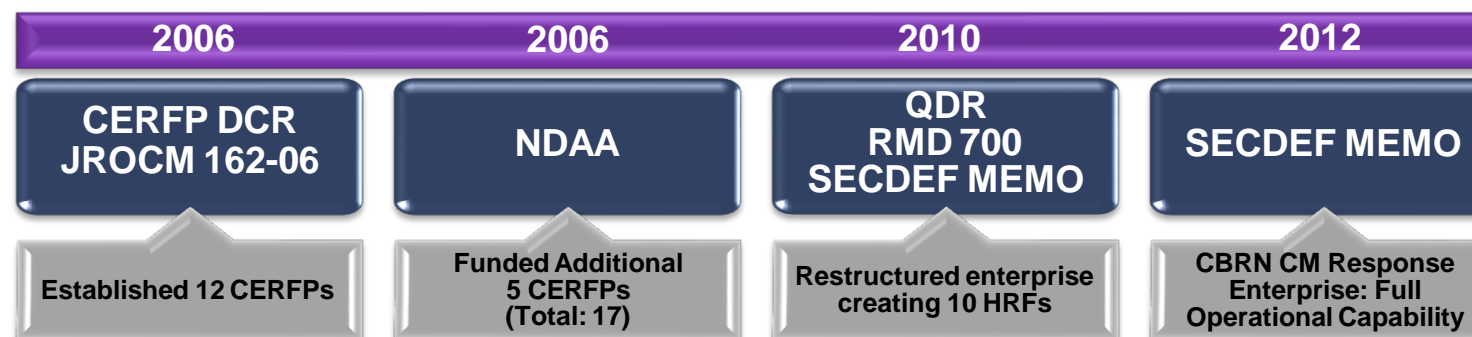
Historical Context



WMD-CST



HRF and CERFP

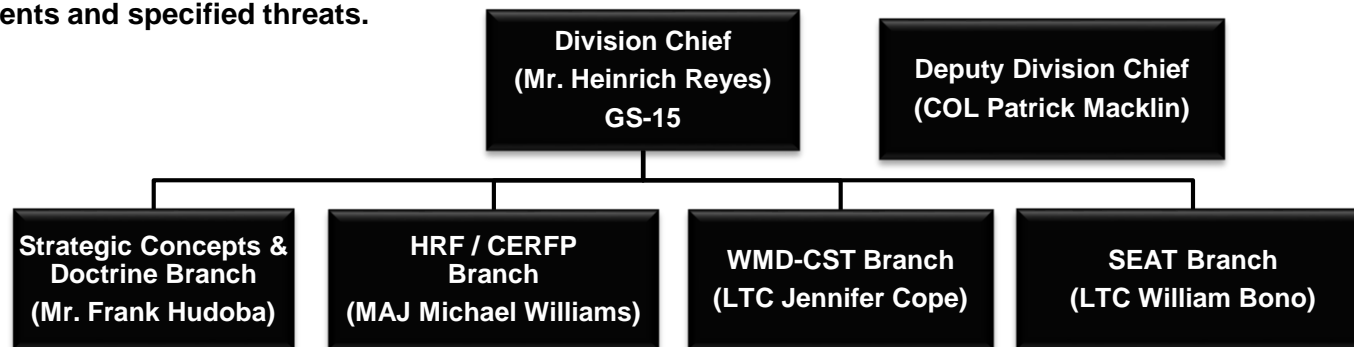


UNCLASSIFIED

Mission and Force Structure



Mission: Develops strategic goals and objectives to standardize and institutionalize the NG CBRN Response Enterprise within DoD programs. Provides programmatic oversight for WMD-CSTs, CERFPs and HRFs. Maintains and sustains CBRN forces with equipment and capabilities incorporating leading edge technologies to support civil authorities, interagency and Federal partners in domestic incidents and specified threats.



Strategic Concepts / Doctrine Branch

- Develop CBRN Response Enterprise CONPLANS and CONOPS
- Develop/formulate TE&Os for CBRN Response Enterprise forces
- Synchronize Plans, Policies, and Doctrine with DoD and Federal partners

WMD-CST & HRF / CERFP Branches

- Develop Policy & Guidance
- Develop Material Acquisition strategies
- Responsible for all PPBE activities
- Institutionalize DOTMLPF-P Joint and Service equities.
- Document TDA changes
- Develop Material Acquisition strategies

SEAT

- Plan, Coordinate & conduct CRE evaluations and assessments
- Capture best practices, develop trends analysis, and identify process improvements



CBRN Response Enterprise (CRE)

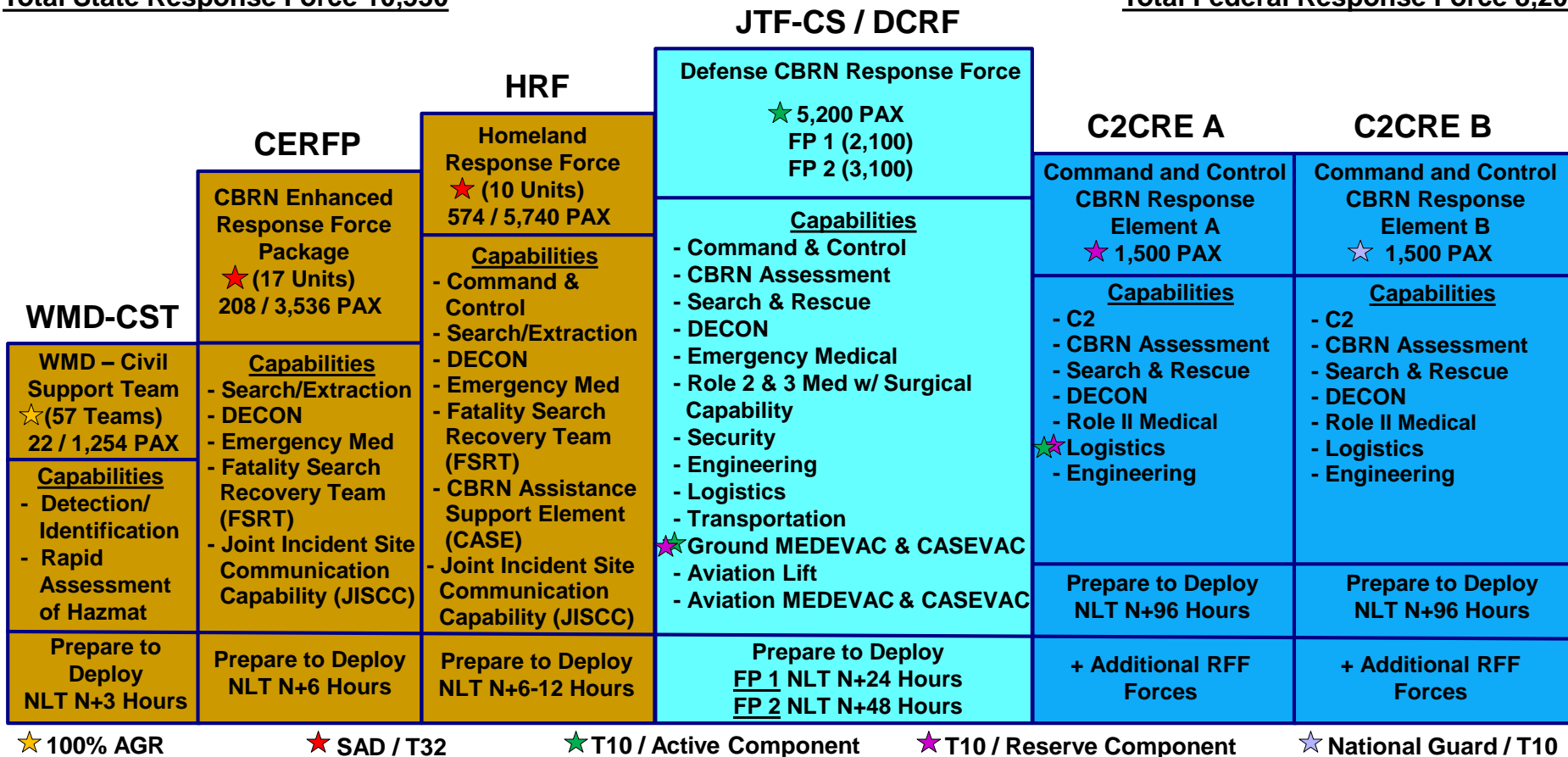


State Response

Federal Response

Total State Response Force 10,530

Total Federal Response Force 8,200



ated Forces

Allocated Forces



WMD-CST

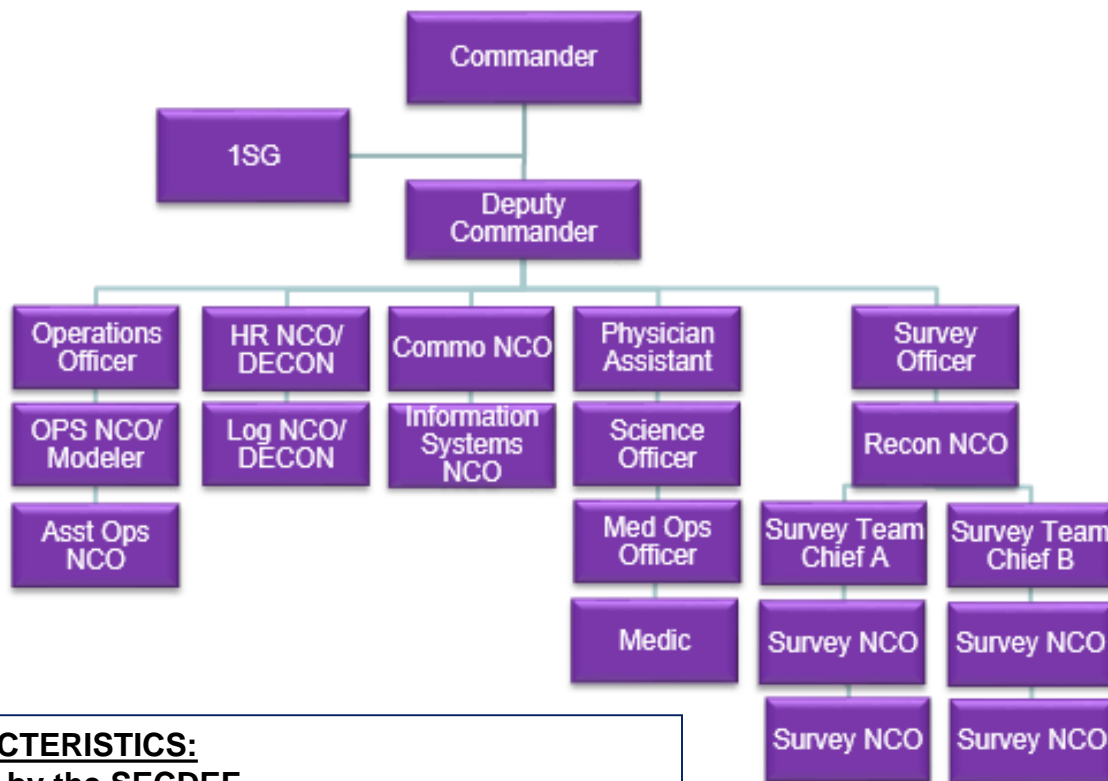


WMD-CST Mission



Support civil authorities at a domestic incident site during specified events, which include use or threatened use of a WMD; terrorist attack or threatened terrorist attack; intentional or unintentional release of nuclear, biological, radiological, or toxic or poisonous chemicals; natural or manmade disasters in the United States that result, or could result, in the catastrophic loss of life or property by **identifying** hazards, **assessing** current and projected consequences, **advising** on response measures, and **assisting** with appropriate requests for additional support.

WMD-CST Organizational Structure



WMD-CST KEY CHARACTERISTICS:

- Each team certified by the SECDEF
- 57 Teams (1 per State & territory/CA, NY, FL 2 ea)
- 22 Full-time, T32 AGR, Joint Manned Army/Air
- On alert 24/7/365
- Sophisticated technical reach-back system
- Interoperable with First Responders (80% COTS gear)
- All WMD-CST personnel are HAZMAT TECH certified



Survey and Detection



Mission: Utilizes specialized equipment to detect CBRN hazards. Collects hazardous samples for detailed analysis and confirmation using validated sampling protocols and chain of custody procedures.

- HAZMAT Technician Certified
- Confined Space Certified

All equipment meets NIOSH/ANSI/OSHA/NFPA Safety/Protection Standards



Capabilities:

- Conduct Sensitive Site Assessment/Exploitation
- Detect/characterize CBRN hazards including emerging threats/Non-Traditional Agents
- Presumptive identification of hazards in hot-zone
- Collect samples for confirmatory analysis
- Documented Chain of Custody for all samples

Significant Detection Equipment:

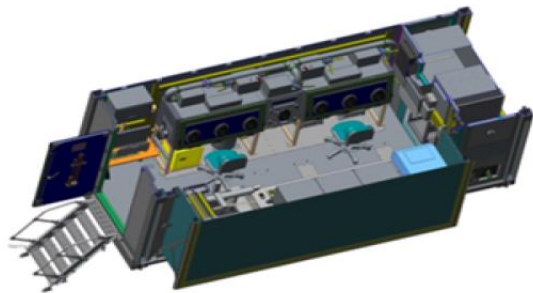
- Radiological Detection / Identification
 - High Purity Germanium (HPGe) / GM Tube / Sodium Iodide
 - Alpha, Beta, Gamma, Neutron, X-Ray
- Biological Identification / Sampling
 - Hand Held Assay and Reader
 - Air Sampling (IBAC / SASS)
- Chemical Identification / Sampling
 - AreaRae / Multi-Rae Multi Gas Detectors (VOC, TOX, O2)
 - Joint Chemical Agent Detector (G Nerve, H Blister)
 - Raman Spectroscopy (First Defender)
 - Fourier Transform Infrared (Hazmat ID, TruDefender FTIR)
 - Gas Chromatograph / Mass Spectrometer (Hapsite GCMS)
 - Colorimetric (Draeger Tubes, M256, M8, M9, Agentase/CIDAS)

Analytical Laboratory System



Mission: Utilize specialized laboratory instrumentation to identify potential chemical and biological threat agents at the field confirmatory level.

The WMD-CST Laboratory Program is accredited by the American Association for Laboratory Accreditation (A2LA) to conform to ISO 17025 Laboratory Standards



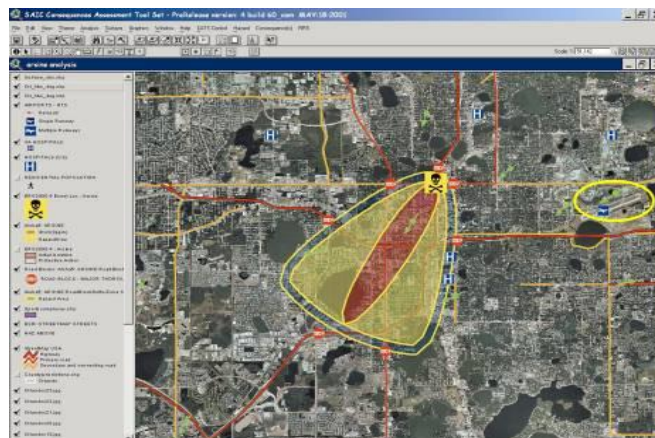
Primary Capabilities:

- Detection/Identification of BWAs
- Detection/Identification of nucleic acid biomarkers
- Detection/identification of unknown chemicals/CWAs/TICs/TIMs/FGAs/PBAs
- Biological Analysis/White Powder Analysis
- Radiological Data Analysis and Interpretation
- Basic Wet Chemistry Capability
- Reach back to State and Federal laboratories
- Secure and Nonsecure Interface to the Unified Command Suite for the transmission of digital sample information
- Environmental Confirmation of Sample

Significant Detection Equipment:

- Class 3 Glovebox for BSL-4 Agents
- Ion Mobility Spectrometer for identification of chemicals
- Hand-held Immunoassays for detection / identification of Biological Warfare Agents (BWA)
- Electrochemiluminescence Immunoassay (ECLIA) for antigen based detection of BWA s
- Polymerase Chain Reaction (PCR) for detection / identification of nucleic acid biomarkers
- Fourier Transform Infrared Spectroscopy (FTIR) for detection / identification of unknown chemicals
- Gas Chromatography Mass Spectroscopy (GC-MS) for detection of Chemical Warfare Agents (CWA) and Toxic Industrial Chemicals / Toxic Industrial Materials (TIC/TIMs)
- Raman Spectroscopy for detection of CWA and TIC/TIMs
- Polarized Light Microscopy for "white powder" analysis
- Fluorescent Light Microscopy for biological analysis

A photograph showing two individuals in full-body hazmat suits and respirators operating a John Deere Gator utility vehicle. The vehicle is equipped with various electronic equipment, including a large display screen and a control panel, mounted on the dashboard. The operators are in a parking lot with yellow caution tape and orange traffic cones visible in the background.

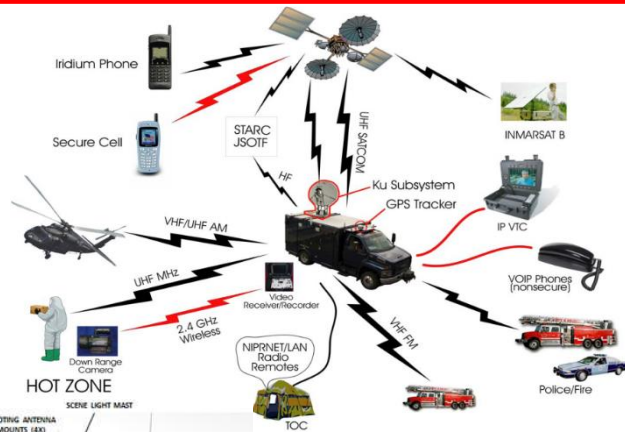


Communications Support



Mission: Establish reach-back capabilities and provide incident-area interoperable communications during operations and provide a critical link to follow-on forces, supplies, and expertise for CBRN incidents and natural / man-made disasters.

All UCS Operators are trained and certified to meet DoD Directive 8570.01M Change 3 Information Assurance Standards



Capabilities:

- Establish interoperable communications (Secure/Unsecure)
- Provide reach-back access from incident site to other local, state or federal agencies and ALS to National Laboratories
- Provide Common Operating Picture (COP) support
- Establish unit-level voice and data networking support
- NG CIMS (real time sensor data/imagery from downrange)

Significant Support Equipment:

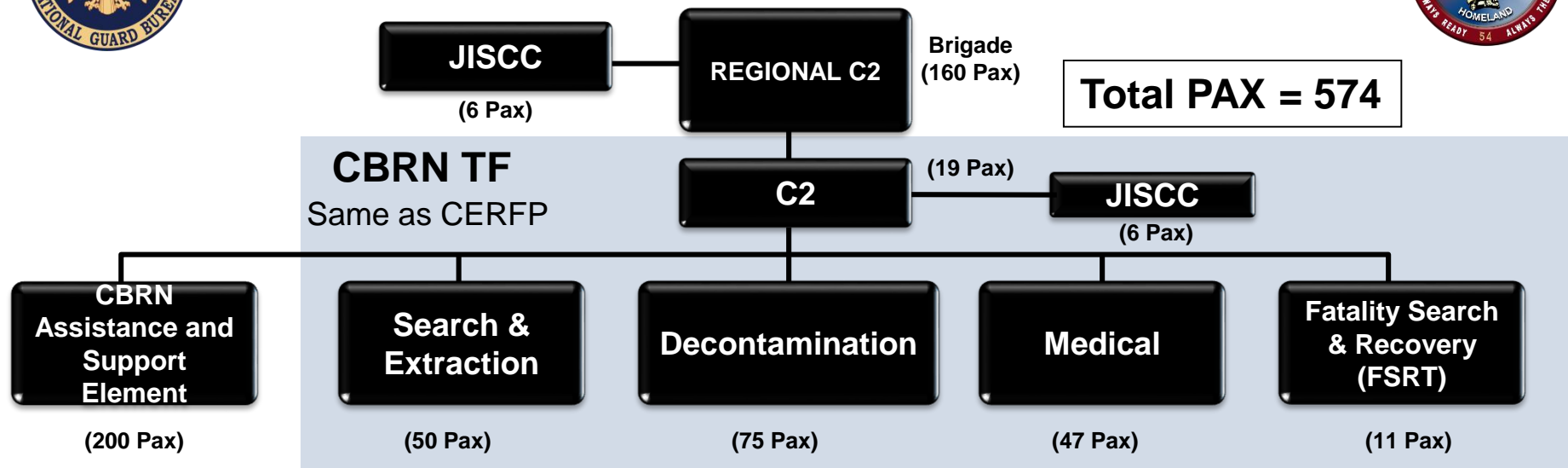
- Unified Command Suite (UCS):
 - Voice interoperability (radio, IP telephony)
 - HF/UHF/VHF/800MHz radio support
 - SATCOM
 - DSN and Commercial telephony
 - NIPR and SIPR data access
 - Onboard SCIF
 - Collaborative voice and video teleconferencing
- Advanced Echelon (ADVON) Vehicle:
 - Mobile and stationary voice/data/fax communications
 - Handheld and hands-free radio support
 - Satellite and VoIP telephony
 - Satellite and local radio
 - GPS navigation system
- Secure communications via COMSEC equipment, keying material management, link establishment and maintenance support of Classified documents
- IC communications augmentation support
- Coordination with civil and military agencies for follow-on support

UNCLASSIFIED



Homeland Response Force (HRF)

Homeland Response Force (HRF)



MISSION: When directed by the Secretary of Defense, coordinated by the Chief of the National Guard Bureau, and upon consent of the Governor(s) during major or catastrophic CBRN incidents, the HRF and CERFP alerts, recalls and deploys critical command and control and life-saving capabilities within six hours; on order, deploys and conducts command and control, search and extraction, mass casualty decontamination, and medical stabilization in order to save lives and mitigate human suffering; On order, redeploys.

KEY CHARACTERISTICS:

- Designed to operate at the local, state, regional and national level
- HRF's are validated by the TAG of each State
- 80% Commercial off the shelf equipment
- HAZMAT Awareness or Operations level certified
- Total of 10 HRF's one per FEMA Region
- All members ICS 100b, 200b, 700a and 800b trained
- BDE C2 Bridges a gap between JFHQ and CBRN support units (CERFP and CST)
- CASE Force Protection for operations and general support
- Communications - reach back and incident area interoperable systems
- Each component (capability) can be deployed on an individual basis or as needed basis

HRF/CERFP Communications Support



- **C2-level communications is supported by NG Joint Incident Site Communications Capability (JISCC) Block 3 system assets:**
 - Access to commercial Internet, NIPRNET, and SIPRNET data services
 - Access to public/commercial and military telephony services
 - Reach-back access to NG support services
 - Voice/Radio interoperability with other incident-area military and civilian response partner agencies
 - Dedicated wired/wireless local area networks
 - Beyond line of sight High Frequency (HF) radio support
 - Other capabilities - Video Teleconference, fax, integration with user expansion packages
- **Additional Capabilities and Equipment include:**
 - Unit-level tactical radio communications support (e.g., handheld devices, repeaters)
 - Laptop computer devices
 - Shared Situational Awareness (SSA)/ Common Operating Picture (COP) support



CBRN Assistance Support Element (CASE)



- **Primary Capabilities**
 - Maintain integrity of DECON corridor
 - Assist in casualty, and fatalities movements
 - Provide controls at Hot Zone entry and exit points
 - Maintain force protections for uninterrupted CERFP/CBRN TF footprint operations
 - General support - assists with riot control

All CASE members trained and certified to the HAZMAT Operations Level (CFR 1910-120 / NFPA 472)





HRF GSA & Army Vehicles

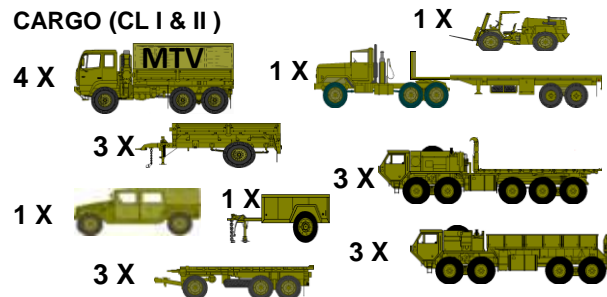


HRF C2 (160 PAX)

- 4- F350s
- 4 – Buses 44 PAX
- 3 - Vans
- 1- 20 FT Cargo Truck
- 4 – Cargo Trailers



CARGO (CL I & II)



Maintenance & Recovery

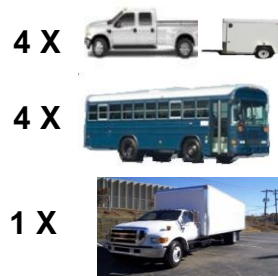


HEMTT (CL III B)

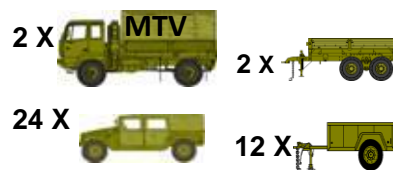


CASE (200 PAX)

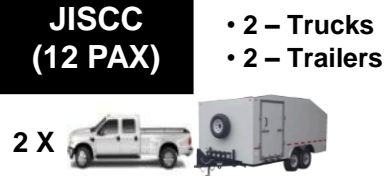
- 4 - F350s
- 4 – Buses 44 PAX
- 1 – 20 FT Cargo Truck
- 4 – Cargo Trailers



CARGO (CL I & II) CASE

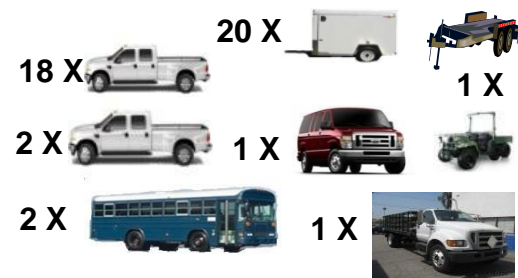


JISCC (12 PAX)



CBRN TF (208 PAX)

- 2 –F450s (MED)
- 18 – F350s
- 20 –Trailers
- 1 – Stake Body Truck 750
- 1 – Van
- 2 – 44 PAX Bus
- 1 – ATV
- 1- DECON Trailer



CARGO (CL I & II) C2 Section



C2

MED

DECON

S&E

FSRT

FSRT (11 PAX)

- 4 – F350/450s
- 2 – Cargo Trailers
- 2- Flat Trailers
- 3 -ATVs



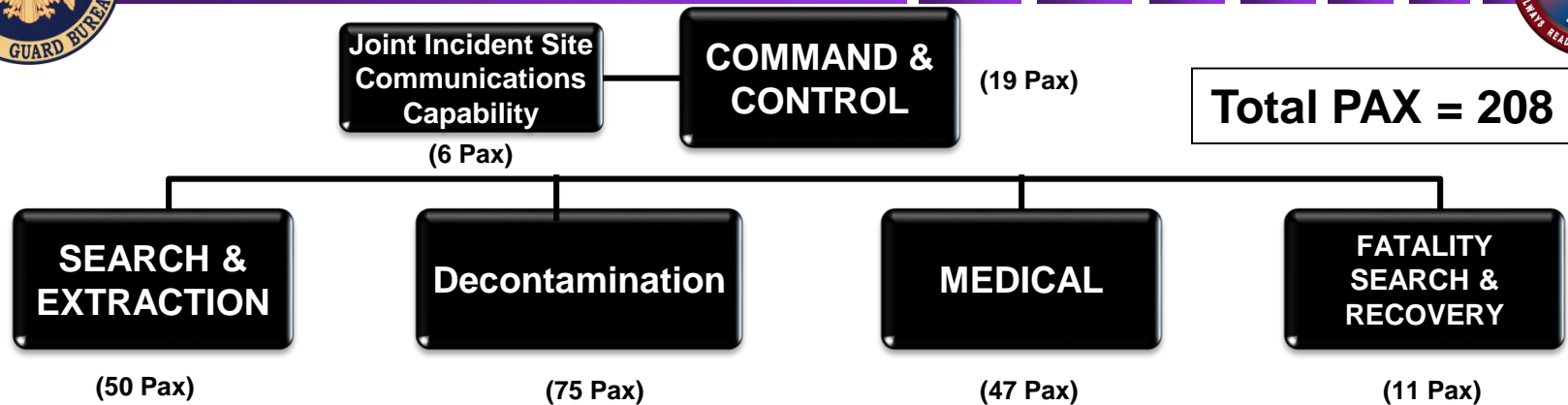
PAX Movement
Supported by
Buses

TOTAL
51 GSA Leased
Vehicles and 47
Army Vehicles



CBRN Enhanced Response Force Package (CERFP) and CBRN Task Force

CBRNE Enhanced Response Force Package (CERFP)/CBRN Task Force



MISSION: When directed by the Secretary of Defense, coordinated by the Chief of the National Guard Bureau, and upon consent of the Governor(s) during major or catastrophic CBRN incidents, the HRF and CERFP alerts, recalls and deploys critical command and control and **life-saving** capabilities within six hours; on order, deploys and conducts command and control, **search and extraction**, **mass casualty decontamination**, and **medical stabilization** in order to save lives and mitigate human suffering; On order, redeploys

KEY CHARACTERISTICS:

- Designed to operate at the local, state, regional and national level
- CERFPs are validated by the TAG of each State
- 80% Commercial Off The Shelf (COTS) equipment
- HAZMAT Awareness and Operations level certified
- Total of 17 CERFP at least one per FEMA Region
- All members ICS 100b, 200b, 700a and 800b trained
- FSRT coordinates the removal of contaminated remains only within the CERFP area of operations
- Communications - reach back and incident area interoperable systems
- Each component (capability) can be deployed on an individual basis or as needed basis

CERFP/CBRN Task Force C2



- **Primary Capabilities**
 - Conduct planning and coordination
 - Develop Incident Action Plans (IAP)
 - Oversee IAP Execution
 - Conduct Sustainment Operations
 - Conduct Deployment Operations
 - Conduct Redeployment Operations



**All C2 members trained and certified to the
HAZMAT Awareness Level (CFR 1910-
120/NFPA 472)**



Search and Extraction



- **Collective Capabilities (NFPA 1670)**
 - S&E element trained and equipped to provide the following operational capabilities:
 - Rope Rescue at the Operations Level
 - Structural Collapse Search and Rescue at the Operations Level
 - Confined Space Search and Rescue at the Operations Level

- **Individual Qualifications (NFPA 1006 (2013))**
 - All Members
 - Level I Rope Rescuer
 - Level I Confined Space Rescuer
 - Level I Structural Collapse Rescuer
 - Team Leaders and above (minimum of 5 members per S&E element)
 - Level II Rope Rescuer
 - Level II Confined Space Rescuer
 - Level II Structural Collapse Rescuer

- **Primary Capabilities**
 - Conduct search operations
 - Conduct rope rescue operations
 - Conduct lifting/loading operations
 - Conduct confined space operations
 - **Conduct S&E tasks below IDLH levels in NFPA Class 2 PPE w/ PAPR**

All S&E members trained and certified to the HAZMAT Operations level (CFR 1910-120/NFPA 472)

All equipment meets NIOSH/ANSI/OSHA/NFPA Safety/Protection Standards





Decontamination



- **Primary Capabilities**
 - Establish DECON site
 - Conduct ambulatory/non-ambulatory clothing removal, decontamination, monitoring, and redress operations
 - Establish equipment and personnel property decontamination stations
 - Establish and maintain a hazardous waste site.
 - Conduct technical decontamination



Mobile Decontamination
Trailer Lane



Non-Ambulatory
Decontamination Lane



Ambulatory
Decontamination Lane



All DECON members trained and certified to the HAZMAT Operations Level
(CFR 1910-120 / NFPA 472)



- **Qualifications**

- Possess civilian licensure and military privileging as physicians, physician assistants, registered nurses, pharmacists, NREMT's
- Specialized Medical Trauma Training in Chemical, Biological, Radiological, Nuclear, and High-Yield Explosives

- **Primary Capabilities**

- Perform mass casualty triage
- Provide life-saving medical stabilization
- Coordinate transportation to higher levels of care

All Medical members trained and certified to the either the *HAZMAT Awareness or HAZMAT Operations Level (CFR 1910-120)





Fatality Search and Recovery Team



- **Primary Capabilities**
 - Collect, catalog, and hold human remains until appropriate medical examiner /Coroner takes custody
 - Management of contaminated remains waste
- **Secondary Capability**
 - Conduct search and recovery operations for human remains in a contaminated area



Priority of Effort

- Clear medical element lanes
- Clear DECON lanes
- Perform Hot Zone Operations



All FSRT members trained and certified to the HAZMAT Operations Level (CFR 1910-120)

CERFP GSA & Army Vehicles



C2 (19 PAX)

- 3x F350s
- 1x Cargo Trailer
- 1x C2 Trailer
- 1x Climate Cargo Trailer
- 1x Bus



DECON (75 PAX)

- 6x F350s
- 1x F450 or F750
- 5x Cargo Trailers
- 1x Climate Cargo Trailer
- 1x Decon Trailer
- 1x Bus



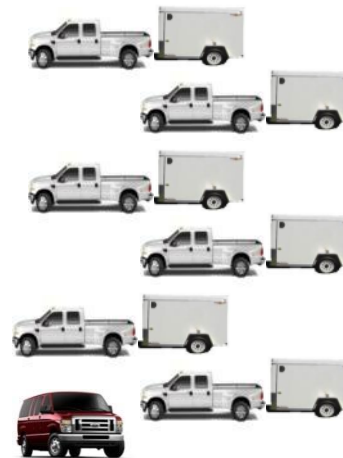
S&E (50 PAX)

- 5x F350s
- 4x Cargo Trailers
- 1x Climate Cargo Trailer
- 1x ATV



MED (47 PAX)

- 4x F350s
- 2x F450s
- 1x Van (15 PAX)
- 6x Cargo Trailers



FSRT (11 PAX)

- 4x F350/ F450
- 2x Climate Cargo Trailers
- 2x Flatbed Trailers
- 3x ATVs



CARGO (CL I & II) C2 Section



As of: 19 FEB 2020

JISSC (6 PAX)

- 1x Truck
- 1x Trailer



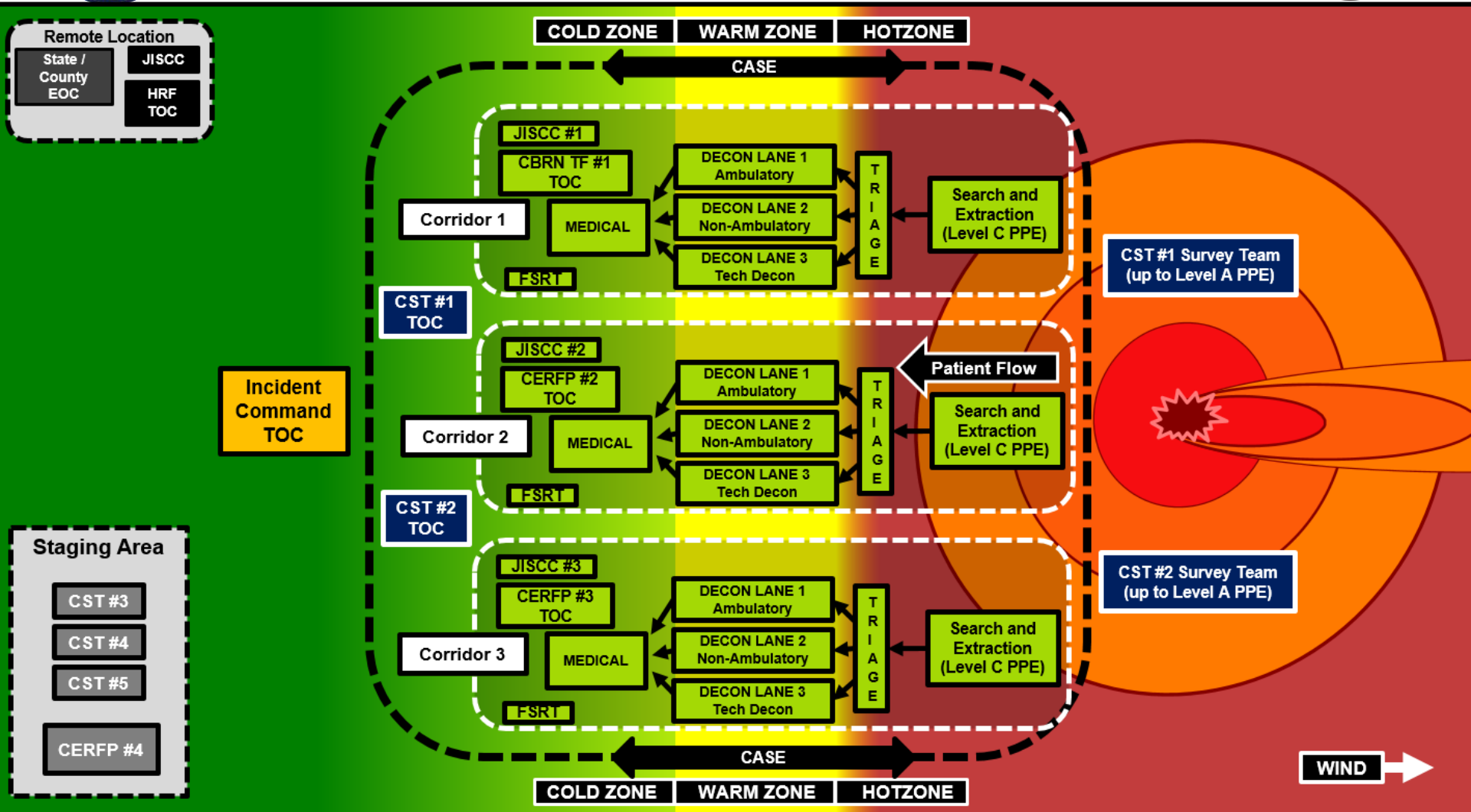
TOTAL
29 GSA Leased
Vehicles and 4
Army Vehicles

Notes:

- Movement planning factor: 5 PAX per vehicle (F350 or F450)
- ANG pay for the Med Element 7 vehicles and FSRT 4 vehicles
- ARNG pay for the C2, DECON and S&E vehicles
- PAX Movement : Approx. 87 personnel are transported by bus

UNCLASSIFIED

NG CRE Concept of Operations



NG CRE Locations

