



U.S. ARMY

Perform Water Survival Techniques

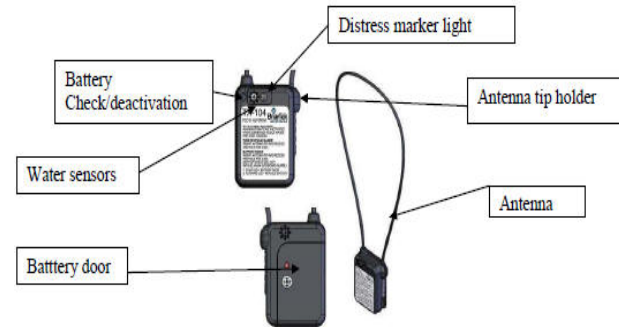


Perform Donning Of A Life Jacket.

- a. Check whistle and chem light for serviceability.
- b. Don your life jacket within 2 minutes.

WARNING:

PERSONNEL WHO FALL INTO THE WATER FROM A GREAT HEIGHT MAY BE INITIALLY STUNNED OR INJURED. THE USCG SERIES 160.155 (TYPE I) PRESERVER IS IMPORTANT WHERE RISK OF NECK INJURY IS PRESENT.



MOBI (Man Overboard Indicator Transmitter).



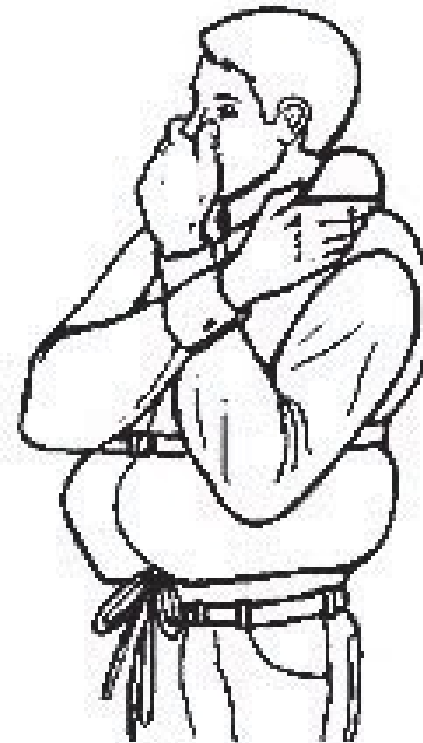
U.S. ARMY

Perform Water Survival Techniques



Enter water from a height while wearing a life jacket.

- a. Ensure life jacket is correctly secured prior to entering the water.
- b. Remove glasses, false teeth, sharp objects and contact lenses.
- c. Get into proper jump position.





U.S. ARMY

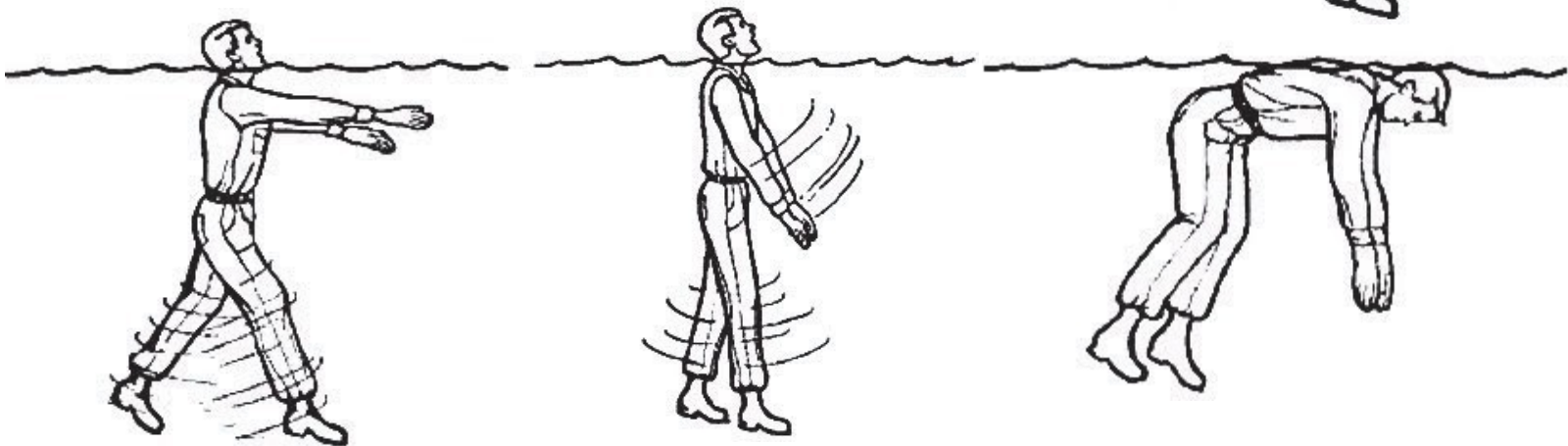
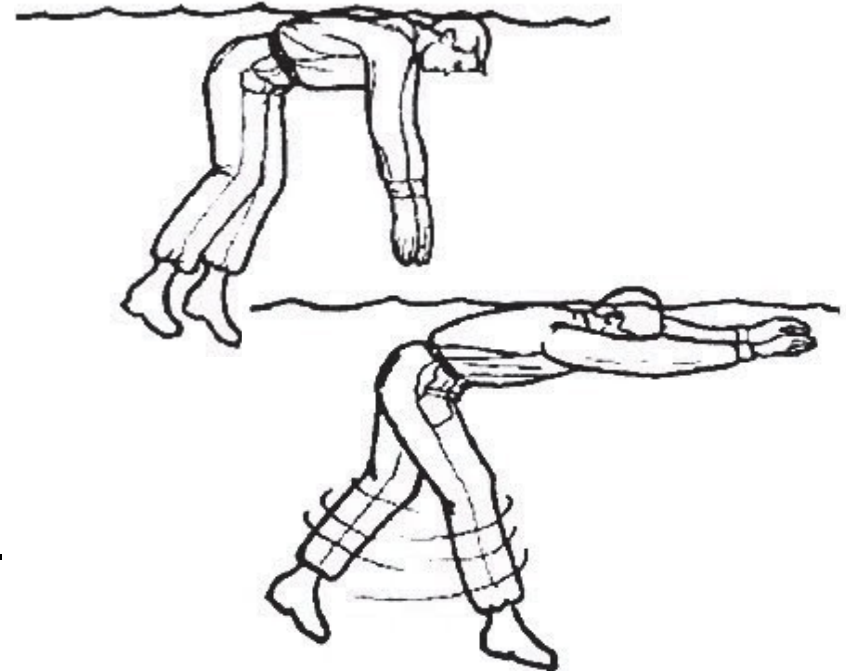
Perform Water Survival Techniques



Perform The Travel Stroke.

Perform Drownproofing Procedures.

- Execute the **resting** position.
- Execute the **preparing to exhale** position.
- Execute the **exhalation** position.
- Execute the **inhalation** position.
- Execute **return to rest** position.





U.S. ARMY

Perform Water Survival Techniques



Perform swim through a thick oil fire.

Perform Swimming Through a Thin Oil Fire.

Perform Cold Water Survival Techniques (observe water conditions and don emersion suit)

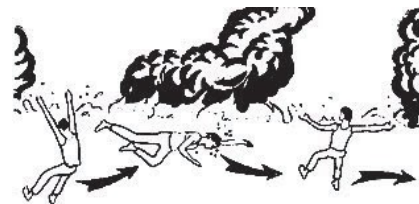
Perform life raft procedures.



Break the Surface



Fully Inhale



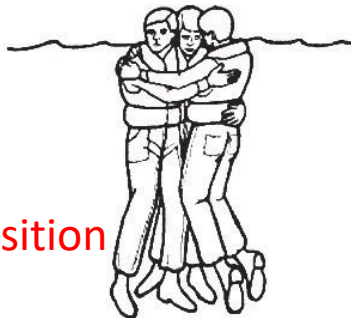
Thick Oil Fire



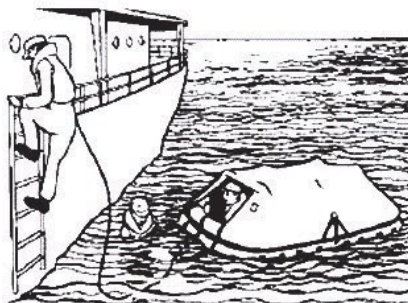
Thin Oil Fire



Double-up Position



Buddy-up Position



Boarding a Life Raft



U.S. ARMY

Effects of Water Temp



Water Temperature Range (°F)	Wetsuit Thickness	Recommended Wetsuit Type
>72°	N/A	Rashguard
65° - 75°	0.5 mm - 2/1 mm	Top / Shorty
62° - 68°	2 mm - 3/2 mm	Springsuit / Full Suit
58° - 63°	3/2 mm - 4/3 mm	Full Suit + Boots
52° - 58°	4/3 mm - 5/4/3 mm	Full Suit + Boots + Gloves + Hood
43° - 52°	5/4 mm - 5/4/3 mm	Full Suit + Boots + Gloves + Hood
42° and below	6/5 mm - 6/5/4 mm	Full Suit + Boots + Gloves + Hood

Wetsuit Temperature Guide

Operate a Small Boat



U.S. ARMY



Inflatable Boats

There are **two types** of inflatable boats that are unique to engineers. The Family Of Boats And Motors (FoBaM) consisting of;

7-person inflatable **Combat Raiding Craft** (I-CRC),

15-person inflatable **Combat Assault Craft** (I-CAC)

The Inflatable, Combat Rubber Reconnaissance Crafts (CRRCs) that consist of the;

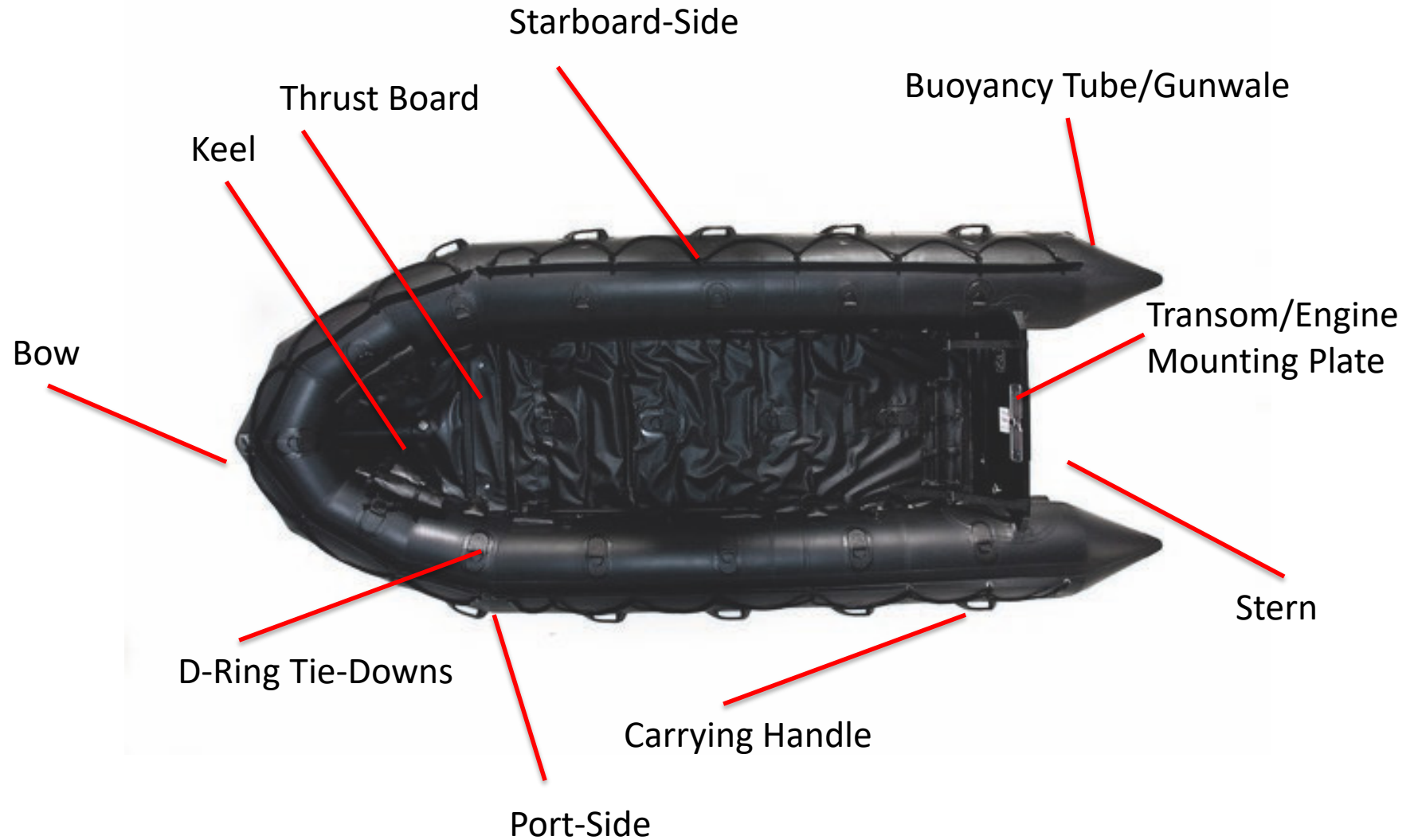
F-470 CRRC, has a capacity of eight to ten passengers,

F-530 CRRC has a capacity of ten to twelve passengers.



U.S. ARMY

Operate a Small Boat





U.S. ARMY

Operate a Small Boat



1. General Do's and Don'ts on Zodiac inflatable boats:
 - a. Never run the boat underinflated
 - b. Wash down the boat with fresh water after every use
 - c. Avoid dragging the boat on rock beaches, rough surfaces, coral reefs, and so forth...
 - d. Ensure the boat is thoroughly dry and free of grit and sand before deflating and placing in carrying bag
 - e. NEVER lift the boat by the lifeline

Operate a Small Boat



U.S. ARMY



Launch the inflatable boat.

1. Initiate count off commands.

a. Preparatory Commands: The coxswain issues preparatory command to indicate the persons who will execute the command to follow. In some instances the preparatory command includes the expression “prepare to/ short count/ long count”

2. Boat Handling Commands:

The following boat commands are used:

- a. Low Carry
- b. High Carry

3. Inspect the launch site

- a. The boat team may launch the boat bow or stern first. Launch the boat bow first whenever the water is shallow enough for the team to wade in carrying the boat at low carry.
- b. Launch the boat stern first when the water is too deep for wading (i.e. steeply sloping bank of a river).
- c. Ensure launch site is clear of debris and ensure that the bowline is secured.

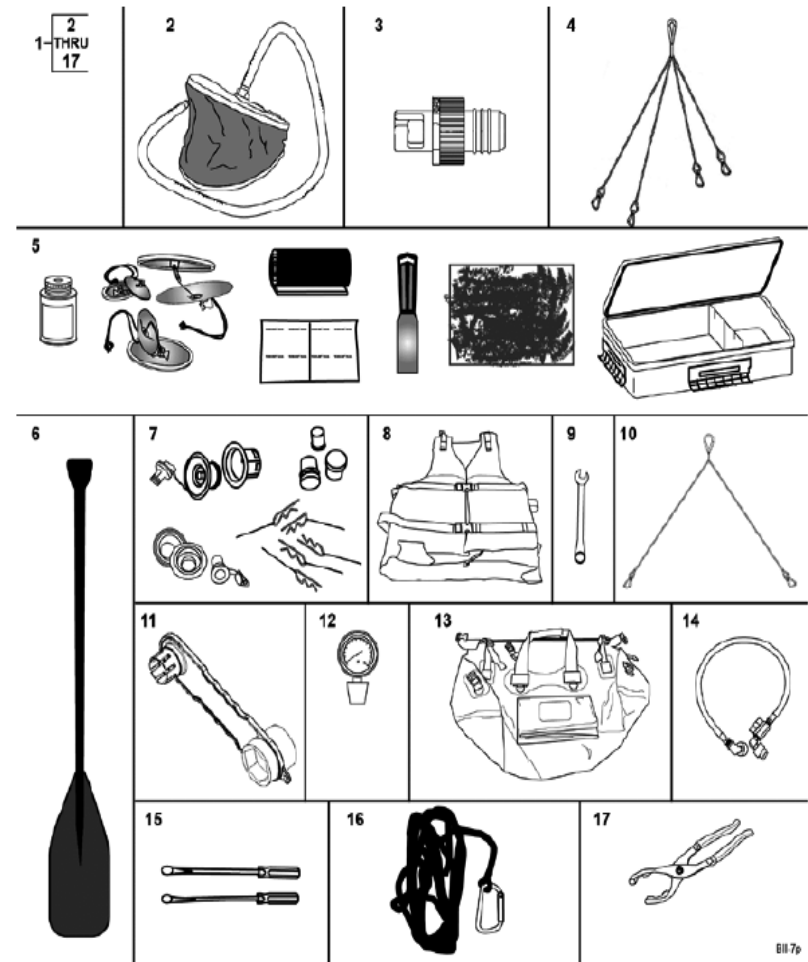


U.S. ARMY

Operate a Small Boat



4. Perform a load-out inspection of the equipment.
 - (1) Secure Outboard motor.
 - (2) Secure Fuel bladders.
 - (3) Secure Paddles.
 - (4) Secure Pumps.
 - (5) Secure Repair kit.
 - (6) Secure additional equipment necessary to support the mission (rucks to centerline anchor)



Operate a Small Boat



U.S. ARMY



Perform boat operations.

a. Conduct initial boat operations w/motors

- Start the outboard motor.
- Ensure that cooling water is being discharged from the water pump discharge port, shut down the motor.
- Ensure that all passengers are wearing flotation devices.
- Ensure that the radio is turned on, waterproofed, and secured by a lanyard.
- Ensure that the passengers and equipment are spread out and evenly distributed
- within the boat.



b. Conduct initial boat operations without motors (manual technique)

- Initiate Commands
- Ensure that all passengers are wearing flotation devices
- Ensure that the radio is turned on, waterproofed and secured by a lanyard
- Ensure that the passengers and equipment are evenly distributed within the boat



U.S. ARMY

Operate a Small Boat



b. Launch the boat from the beach.

- Turn Bow Seaward
- Initiate Commands
- Move boat towards the water
- Load personnel into boat in sequence
- Distribute paddles, and begin paddling
- Watch wave sets and move between them
- Ensure personnel on board stay low and hold on tight

c. Perform beaching operations

- Select a landing site away from rocks and or debris
- Select a wave
- Keep the center of the boat on the crest of the wave all the way to the beach
- Keep the bow at a right angle to the wave
- Shift weight to the stern of the boat
- Paddle faster
- When water is shallow enough for crew to touch, crew will disembark water craft (initiate commands), pushing it as far as it will float, grasps carrying handles and low carrying it ashore

Operate a Small Boat



U.S. ARMY



Perform basic navigational skills.

- a. Meet head-on.
- b. Pass starboard to starboard.
- c. Approach at a right angle.
- d. Run in the same direction.
- e. Approach and overtake another boat.
- f. Avoid large vessels.
- g. Know and apply waterway marking systems.

