

Identifier: DPTM-SOP-CBRN	Revision: 0.0	Effective Date: 15 Feb 2018
-------------------------------------	-------------------------	---------------------------------------

Document Approval Date:	15 Feb 2018
-------------------------	--------------------

Proponent: USAG-WP, Dir Plans, Tng, Mob & Security
--



IMCOM
SOLDIERS • FAMILIES • CIVILIANS

U.S. Army Garrison-West Point DPTMS – Range Operations Policy & Procedures

Standard Operating Procedure CBRN Training Site & CS Chamber



Department of the Army
U.S. Army Garrison West Point
United States Military Academy
West Point, New York 10996-5000

Document History

Document Location

All hard copies will be located at Building 1403 Range Operations Fire Desk. Also, electronic copies may be retrieved via DPTMS website (Training Link), or upon request.

Revision History

Date of this revision: 15 Feb 18	Date of next revision:
----------------------------------	------------------------

Revision Number	Revision Date	Summary of Changes	Author
1	2-27-14	Minor Grammar Changes	Lake
2	2-10-15	Minor Changes	Lake
3	1-06-16	Updated	Lake
4	1-23-17	Minor Changes	Lake

Approvals

This document requires the following approvals:

Name	Title
	USAG-WP, Range Manager
	USAG-WP, Chief of Training
	USAG-WP, Director of Plans, Training, Mobilization & Security

Distribution Formula

This document has been distributed to:

Office	Name Title
Scheduled User	Issued Hard-bound Binder copy during use of range/facility
USAG-WP	Range Operations Office

Table of Contents

1.	General Information.....	5
1.1	Purpose.....	5
1.2	Applicability	5
1.3	Responsibility.....	5
1.4	References.....	5
1.5	Suggested Improvements	5
2.	CBRN Specialty Course Description & Characteristics	6
2.1	Course Description.....	6
2.2	Range Location	6
2.3	Supported Training Available	6
2.4	CBRN Support Facilities.....	6
2.5	Authorized Parking.....	6
2.6	Communications	7
3.	Safety & Security Procedures.....	8
3.1	Facility Specific Safety Measures.....	8
4.	Range Operational Requirements/Responsibilities.....	9
4.1	Range Officer in Charge (OIC) / Range Safety Officer (RSO) Appointment Requirements	9
4.2	Range Officer in Charge (OIC).....	9
5.	CBRN Course Medical Requirements & Evacuation.....	12
5.1	Unit Medical Support Requirements	12
5.2	Keller Army Community Hospital (KACH).....	12
5.3	Serious Incident Report (SIR) Requirements.....	12
5.4	Emergency MEDEVAC Flight Requests.....	12
5.5	Hospital Strip Maps & Directions	13
6.	CS Chamber Concept of Operations	14
6.1	CS Improvised Generator.....	14
6.2	CS Chamber Preparation	15
6.3	Mask Confidence Training (MCT) Exercise	15
7.	Radio Procedures.....	18
7.1	Requesting a Hot Status	18
7.2	Requesting a Cold Status.....	18
7.3	Change of OIC	18
7.4	Requesting a Radio Check (Hourly at the Top of the Hour).....	19

8. Safety Brief.....20

9. Risk Management & Mitigation21

10. Reference Information, Reports & Forms22

1. General Information

1.1 Purpose

This Standard Operating Procedure (SOP) provides standard instructions and checklists for unit and individuals using the CBRN Training Site & CS Chamber. It defines standardized steps and procedures to be followed for its safe and efficient use.

This SOP is directive based and complies with applicable United States Military Academy and Department of the Army Regulations, current doctrine, policy and guidance.

1.2 Applicability

This SOP is designed to provide units with safe operating procedures and guidelines. It applies to all units of the U. S. Armed Forces, civilian organizations, and individuals who are authorized to use this training facility at West Point, and by all applicable users IAW West Point Regulation 350-11.

1.3 Responsibility

Use this SOP in conjunction with TC 3-8 and West Point Reg. 350-11 which provide specific and detailed specialty course responsibilities for using units. These directed and required actions are necessary for the safe conduct of negotiating obstacles and physical readiness training. Full compliance IAW the afore-mentioned regulations as well as steps and procedures of this SOP, is the responsibility of the commanders, as well as the personnel of using organizations or units. Personnel of any non-DoD civilian agency or activity, using West Point ranges and training facilities must also comply with the provisions and requirements outlined in West Point Reg. 350-11.

1.4 References

All required and related publications are those covering the training conducted and those listed in the applicable chapters and Appendix A of West Point Reg. 350-11 or other respective regulations, policies and procedures. Additional references are also listed in TC 3-8.

1.5 Suggested Improvements

The proponent of this Standard Operating Procedure (SOP) is the Director of Plans, Training, Mobilization and Security, U.S. Army Garrison West Point, ATTN: DPTMS, Building 621 Wilson Road, United States Military Academy, West Point, New York 10996-5000. Users are encouraged to send comments and suggested improvements on DA Form 2028 (Recommended Changes to Publications and Blank Forms).

2. CBRN Specialty Course Description & Characteristics

2.1 Course Description

The Verdun Chemical, Biological, Radiological and Nuclear (CBRN) training site and CS chamber is used to conduct Mask Confidence Training (MCT) by demonstrating the effectiveness of personal protective equipment (PPE) in protecting against CBRN hazards.

2.2 Range Location

The Verdun CBRN training site and CS chamber is located in Training Area R, vicinity grid WL75967738.

2.3 Supported Training Available

See TC 3-8, Chapter 3 for Mask Confidence Training (MCT), and Chapter 6 of this SOP.

CBRN Training Site and CS Chamber		
Mask Confidence Training	Administrative Building	CS Chamber

2.4 CBRN Support Facilities

The Verdun CBRN Training Site has the following support facilities to support operations:

Bleachers	CS Chamber Building
Administrative Building	

NOTES: There are no latrines available. Porta-Pottys must be requested by unit through the Directorate of Contracting.

2.5 Authorized Parking

Military Vehicles – military vehicle parking is located at the CBRN training site.

Civilian Privately Owned Vehicles (POVs) – POV parking area is located next to Gate.

2.6 Communications

All specialty courses must maintain two separate means of communication with Range Operations at all times. Primary means of communication with Range Operations will be by Motorola Handheld “**LIVEFIRE**” Channel. Alternate means of communication shall be commercial telephone at the training facility if so equipped with.

There is a commercial telephone located at Building 1857, telephone number is (845) 938-5124.

A quick reference phone index is located at the front of this SOP binder.

3. Safety & Security Procedures

3.1 Facility Specific Safety Measures

In addition to the specific safety precautions for certain munitions, training devices, agents, and simulators, the following safety procedures are provided to limit personnel hazards:

- a. Conduct a safety inspection of the facility.
- b. Ensure that only CS in capsule form (Department of Defense identification code [DODIC] K765) is used in the CS chamber (DA Pam 385-63 and FM 3-11.11, Chapter 6).
- c. Do not use CS grenades in confined spaces (tents, CS chambers, buildings).
- d. Always follow environmental guidelines and material safety data sheets (MSDSs).
- e. Obtain medical evaluation as required. Before being exposed to chemical training agents, Soldiers with respiratory conditions (including histories of asthma, cardiac conditions, severe facial acne, or any active dermatitis) will be referred to a medical officer. Also, soldiers with open wounds and women who are menstruating or pregnant, or suspect that they may be pregnant should be referred to a medical officer. The medical officer evaluates the health records of these individuals and, when necessary, examines them to determine their ability to undergo training without undue risk. The findings and recommendations of the medical officer are recorded in the individual's health record.
- f. Do not wear contact lenses while wearing the individual protective mask. Individuals who normally wear contact lenses must remove them and use optical inserts. Unnecessary eye irritation will occur if CS particles are trapped under contact lenses. The lenses may also be lost due to excessive tearing. All Soldiers requiring corrective lenses will have masks with correctly fitted optical inserts before participating in MCT.
- g. Ensure that an adequate water supply is available during the MCT. Soldiers should be encouraged to drink plenty of water based on the additional heat stress placed on them.
- h. Launder contaminated clothing normally.
- i. Do not allow direct simulatant contact with skin or eyes.
- j. Don the protective mask before entering the training facility or chamber.
- k. Ensure that an eye wash station (5-gallon cans of potable water) is readily available.
- l. Do not allow unprotected personnel to remain in the area during training.
- m. Follow all range safety regulations.
- n. Ensure that an ambulance and a qualified CLS (with protective mask) are onsite.
- o. Direct anyone suffering adverse reactions, other than temporary coughing or minor burning or tearing of the eyes, to the installation medical treatment facility for evaluation and treatment.
- p. Ensure that a fire extinguisher is available, and identify its location.
- q. Fit and test protective masks according to appropriate mask technical manuals.
- r. Ensure that the facility or chamber is located at least 100 meters from any other activity and 500 meters from uncontrolled civilian access roads and cantonment areas (DA Pam 385-63,).
- s. Ensure that instructors are combat lifesaver-certified.
- t. Ensure that instructors are clearly identifiable.
- u. Obey all warning and instructions posted on exterior and interior of chamber.

CAUTION: High temperature dispersion (greater than 700°C) of CS may release hydrogen cyanide and hydrogen chloride.

4. Range Operational Requirements/Responsibilities

4.1 Range Officer in Charge (OIC) / Range Safety Officer (RSO) Appointment Requirements

WEAPON SYSTEM	OFFICER IN CHARGE (OIC)			RANGE SAFETY OFFICER (RSO)		
	OFF	CADET	NCO	OFF	CADET	NCO
Practice hand grenade simunitions training devices; simulators, and small arms (5.56mm and below)	X	N/A	E6(P)	X	X (Wpns Qualified)	E5(P)
Chemical Agents (CS) and smoke	X	N/A	E6 (MOS Qualified)	X	N/A	E5
Aerial gunnery, live grenades, grenade launchers, grenade machine guns; Live mines, and demolitions.	X	N/A	E7	X	N/A	E6
Field Artillery and LASER ranges	X (0-3)	N/A	N/A	Battery XO X	N/A	N/A
Live Fire Exercises using organic weapons, team through squad.	X	N/A	N/A	X	N/A	E7
Mortars	X	N/A	N/A	X	N/A	E6
Direct fire antitank rockets	X	N/A	E7	X	N/A	E6
Specialty Non-LFX Courses	X	N/A	E6	X	X	X
Specialty Non-LFX Courses (Rappel) * Rappel Master Certified	X*	N/A	E7*	X	N/A	E6

Table 4-1, OIC / RSO Appointment Requirements

4.2 Range Officer in Charge (OIC)

The Range OIC holds the responsibility and accountability for the conduct of the activity and the adherence to governing regulations and guidance.

4.2.1 OIC Qualifications

A commissioned, warrant, or noncommissioned officer (NCO) may serve as a Range or Specialty Course OIC. NCOs serving as OIC will be in the grade as shown in Table 4-1 above, at a minimum. Range and Facility OICs will be qualified on the safe conduct of obstacle negotiation and will have satisfactorily completed a safety certification program for which they

are responsible conducted by their Battalion/Unit (O5 & above Command) to which they are assigned.

4.2.2 OIC Actions & Procedures before Facility Occupation

STEP	ACTION	TAKEN
1	Thoroughly plan the operation and/or training activity and determine the personnel and equipment support requirements.	
2	Be command safety certified and appointment is completed, and on file at Range Operations.	
3	Receive the mandatory Range Operations briefing within ONE DAY prior to use.	
4	Ensure qualified instructors are trained on the operation.	
5	Verify that all personnel in a direct supervisory role or safety position are familiar with the provisions of this SOP, West Point Reg. 350-11, and TC 3-8.	
6	Ensures that the required and appropriate medical support personnel are qualified. All appropriate equipment and supplies are available to support the training activity.	
7	Check in at Range Operations upon arrival to the installation to receive an updated briefing and sign for the facility and necessary support equipment.	
8	Develops a composite risk management worksheet for all phases of the range operation(s) and/or training activity, and mitigate initial high and extremely high hazards through appropriate control measures, using DA Fm 2977.	

4.2.3 OIC Actions & Procedures before Operations

STEP	ACTION	TAKEN
1	Ensures the correct training facility is occupied, and conducts a joint inventory with a Range Operations representative to ensure the presence and condition of the facilities, safety equipment and general condition of training site.	
2	Conducts a OIC safety brief to the instructors, reinforcing their duties and responsibilities and general safety requirements.	
3	Directs and supervises that the required designated areas of the training facility are established and set up as required/planned.	
4	Establishes primary radio and secondary telephone communications with Range Operations, and notifies Range Operations upon initial occupation.	
5	Verify that the required medical personnel and equipment support is on site, with strip maps to local medical treatment facilities is present, prior to requesting a HOT status.	
6	Verify the continuous safety and security of all personnel as they negotiate MCT / CS Chamber.	
7	Verify that all personnel wear the required personal protection equipment, as the commander dictates.	
8	Ensure all applicable references and regulations are physically present and on hand:	
9	Notifies Range Operations and requests permission to place the range in a HOT status (Refer to paragraph 7.1).	
10	Implements risk management actions and applicable control measures identified for this phase of the range operations and/or training event.	

4.2.4 OIC Actions & Procedures during Operations

STEP	ACTION	TAKEN
1	Be present at all times at the training site facility while the facility is in a HOT status, and maintains a constant observation of the facility to ensure that personnel are safe and properly conducting training. Greet and brief all range visitors/VIPs, and Range Operations personnel.	
2	Verify that all personnel prior to entering the CS chamber and receive a safety briefing, and that medically screened personnel are identified.	
3	Ensures that communications with Range Operations are maintained, and that hourly radio checks are performed (Refer to paragraph 7.4)	
4	Immediately calls or announces a self-imposed "Cease Training" and notifies Range Operations when:	
4a	Any unsafe action is observed or reported by ANY individual observing an unsafe act.	
4b	When communications are lost with Range Operations and/or Gate Guards.	
4c	When any personal injury occurs.	
4d	Whenever the OIC or medical support leaves the training facility.	
4e	Notifies Range Operations when a change in OIC is needed (refer to paragraph 7.3).	
5	Implements risk management actions and applicable control measures identified for this phase of the range operations and/or training event.	

4.2.5 OIC Actions & Procedures after Operations

STEP	ACTION	TAKEN
1	Notify Range Operations upon completion of training and request permission to go COLD (reference procedure 7.2). Be prepared to report:	
1a	Number of personnel trained.	
2	Contact Range Operations for range clearance/inspection after performing the following:	
2a	Police training site and buildings for all trash and place in local dumpster. NO MREs, kitchen waste will be placed in the dumpsters.	
2b	Check overall condition of the range to include all range support facilities and repair any deficiencies or faults discovered if applicable.	
2c	Hand receipted range equipment and supplies are recovered, cleaned and prepared for turn-in.	
3	Conduct a joint inventory IAW range clearance agreement with a Range Operations representative for clearance of the training area, and secure the facility.	
4	Return all hand-receipted range equipment, along with any applicable reports/forms to Range Operations.	

5. CBRN Course Medical Requirements & Evacuation

5.1 Unit Medical Support Requirements

Units will comply with the following range medical support requirements:

- a. A trained medical aid person, MOS qualified. This individual will be equipped with a litter, radio communication, and a complete medical aid bag, containing all required CL VIII items that have a valid expiration date.
- b. A dedicated medical evacuation vehicle, capable of transporting a litter, and properly equipped, and with a current PMCS. Medical aid personnel assigned to these ranges, along with the supporting medical vehicle, will not be used for any other duty.

5.1.1 Execution

- a. Using unit medical personnel will review and familiarize themselves with the strip map route(s) to KACH ER and the local community hospital prior to conducting operations.
- b. Whenever the dedicated medical aid person or vehicle must leave the area for any reason the training facility must “Cease Training” and remains in a “COLD” status until a replacement is provided, or until the assigned vehicle and medical personnel have returned to the facility. Range Operations will then grant the unit permission to re-open the facility and place the facility in a “HOT” status.
- c. Medical support personnel at the facility will provide treatment for minor injuries and basic first-aid for life-threatening injury or illness.
- d. Medical evacuation vehicles will display all frequencies and telephone numbers in case of immediate use:
 - a. Range Operations Frequency is Motorola Handheld “LIVEFIRE: Channel.
 - b. West Point Fire & Emergency Services Division – 845.938.5197
 - c. KACH ER frequency is VHF 150.7.
 - d. KACH ER – 845.938.4004 / 5169.

5.2 Keller Army Community Hospital (KACH)

Injuries and/or illness requiring immediate emergency support will be immediately reported to the KACH ER, with the location of the site for patient evacuation by KACH.

5.3 Serious Incident Report (SIR) Requirements

Full and immediate medical attention directed at the patient is the first and foremost priority. As soon as possible, the OIC will contact Range Operations and report the medical injury/accident. Be prepared to provide at a minimum “the Five W’s” (Who, What, When, Where and Why).

5.4 Emergency MEDEVAC Flight Requests

The USMA does NOT have an organic MEDEVAC capability to support training complex operations; units and organizations will plan medical evacuation with their organic assets. Stat Flights are for the emergency evacuation of injured personnel by air ambulance. Only the

emergency first responder on site, DES dispatcher or KACH medical personnel are authorized to request or terminate a MEDEVAC mission.

To obtain a Stat Flight, contact Range Operations by Motorola Handheld "LIVEFIRE" Channel or by telephone at (845)938-3930. After Hours the Military Police Dispatch at (845)938-3333. Air Frequency is VHF 126.20.

9-LINE MEDEVAC		
ANNOUNCED		LINE INFO DESCRIPTION
LINE	LINE INFO	
1		Location of the Pick-Up site by 6-digit grid and any prominent terrain features nearby.
2		Unit Identification
3	A= B=	Number of Patients by evacuation category/precedence A=Urgent (requires immediate evacuation to prevent loss of life B=Priority (serious injury, but <u>NOT</u> life threatening
4	A= B= C= D=	Special equipment needed: A=none B=hoist C=extraction equipment D=ventilator
5	A= B=	Number of patients A=litter B=ambulatory
6		Number and types of wounds, injuries and illnesses
7		Method of marking landing zone/pick-up site A=panels B=pyrotechnic signal C=smoke signal D=none E=other
8		Patient nationality and status A=US military B=US civilian C=other (describe)
9		Terrain description of pick-up site, any site hazards; if none=so state

5.5 Hospital Strip Maps & Directions

5.5.1 Keller Army Community Hospital

Reference Tab 10A, Local Strip Map to Keller Army Community Hospital

5.5.2 St. Luke's Community Cornwall Campus Hospital, Cornwall, NY

Reference Tab 10B, Local Strip Map to Saint Luke's Community Hospital.

6. CS Chamber Concept of Operations

- a. Mask confidence training (MCT) demonstrates the effectiveness of personal protective equipment (PPE) in protecting against chemical, biological, radiological, and nuclear (CBRN) hazards. This chapter provides guidance on a method on how to plan and conduct the MCT.
- b. An automated assessment test, such as the M41 Protection Assessment Test System (PATs), does not achieve the same level of Soldier confidence in individual PPE that is achieved by the MCT. The assessment test only verifies that the equipment is working and fitted properly. O-chlorobenzylidene malononitrile (CS) dispersed at low temperatures in a chamber builds confidence and encourages the practice of proper mask maintenance procedures, which are learned through performance-oriented training.

6.1 CS Improvised Generator

The materials required to create an improvised CS generator are listed in table 1-1 and pictured in Figures 1-1 and 1-2.

ITEM	REMARKS
Empty tin or metal can	Can with holes punched on top
Flat metal plate	Candle support
Heat source	Candle or canned heat (I.E. Sterno)
Ignition source	CS generator igniter
CS capsules	DODIC K765
Bricks	2 each
Fire extinguisher	2 each Safety

Table 1-1. Material Requirements



Figure 1-1. Materials Required to Create an Improvised CS Generator

NOTE: The blue background in Figure 1-1 was used to provide easier observation of the CS capsules. It is not used to create an improvised CS generator.



Figure 1-2. Improvised CS Generator Assembly

6.2 CS Chamber Preparation

The following are preparation steps that are required to properly and safely conduct MCT:

- Ensure that the chamber is free of any physical hazards.
- Ensure that lighting is adequate.
- Ensure that fire extinguishers are easily accessible.
- Ensure that a chart of the CS chamber and procedures are displayed outside the chamber.
- Ensure that extra protective masks of all sizes are available.
- Use an improvised CS generator (Figure 1-2) and CS capsules to establish the initial concentration of CS.
- Keep exit doors of the chamber clear at all times.

NOTE: Chamber Charging: 1 Capsule for initial concentration. Add 1 Capsule for every 50 soldiers who leave the building. Maximum unsealed time is 15 seconds. CS melting temperature is 203-205 degrees/95-96 Celsius. Adding water to dispersion device (pan or an) is **PROHIBITED**. Burning of CS Shell and Packaging is **PROHIBITED**.

6.3 Mask Confidence Training (MCT) Exercise

A minimum of two instructors are required to operate the MCT. The primary instructor should be a school-trained area of concentration (AOC) 74A, military occupational specialty (MOS) 74D, or have attended the two-week CBRN Defense Course. The primary instructor will be located inside the facility, and the secondary instructor will be located outside the chamber. The CBRN noncommissioned officer (NCO) will fit and test protective masks according to appropriate mask

technical manuals prior to MCT. Brief the Soldier on the purpose of the training, the type of agent used, MCT actions, and safety requirements.

- a. Pre-position Soldiers who are waiting to enter the facility upwind to avoid potential exposure to the agent before masking.
- b. Have Soldiers enter the MCT facility individually or in small groups. Five Soldiers per instructor is recommended.
- c. Table 1-2 below describes the minimum exercise requirements that should be conducted in the MCT chamber.

Table 1-2. MCT Exercises
1. Breathing normally —In a normal standing position, without talking, have the Soldiers breathe normally.
2. Breathing deeply —In a normal standing position, have the Soldiers breathe slowly and deeply, taking precautions not to hyperventilate.
3. Turning head side to side —Instruct the Soldiers to stand in place and slowly turn their heads from side to side to a full range of motion on each side. The Soldiers hold their heads at each extreme momentarily and inhale at each side.
4. Moving head up and down —Instruct the Soldiers to stand in place and slowly move their heads up and down. The Soldiers will inhale in the up and down positions.
5. Rotating chin —Instruct the Soldiers to stand in place and move their jaws in a circular pattern, holding their mouths slightly open to simulate speaking.
6. Running in place —Instruct the Soldiers to run in place for 60 seconds. NOTE: Light exercise may be used to increase the breathing rate, which will detect a leaking mask more effectively.
7. Drinking water while in a contaminated environment —Instruct the Soldiers to drink from their canteens without breaking the seal of their protective masks. See STP-21-1-SMCT, Task 031-503-1035.
8. Donning and sealing mask in a contaminated environment —Have the Soldiers close their eyes, hold their breath, and break the seals of their protective masks by pulling the masks up and away from their faces. Within 30 seconds, have the Soldiers clear and reseal their protective masks. See STP-21-1-SMCT, Task 031-503-1035. If any Soldier experience symptoms other than minor skin irritations have him leave the facility immediately.

NOTE: If a Soldier detects the training agent during the MCT exercises, have him leave the facility immediately. The secondary instructor will identify and correct the problem and direct the Soldier to reenter the chamber. Soldiers are not required to completely remove their protective masks prior to exiting the chamber.

- d. Have the Soldiers exit the chamber once the exercises are complete.
- e. Upon exiting the MCT, all Soldiers will remove their protective mask and face into the wind until their eyes are clear of the CS agent.
- f. Ensure that the heat-generating device is extinguished before leaving the MCT.
- g. Once the MCT is complete, the Soldiers will clean and properly store their protective masks.
- h. The instructors will conduct an after-action review, focusing on the importance of a properly fitted mask. The protective mask is a critical CBRN protection asset only if it fits

properly. The protective benefit of the mask can be improved and maintained through proper maintenance, donning, adjustment, and wear of the protective mask.

The MCT is not a quantitative measure of the proper fit of the protective mask, which is the function of the M41 PATS; however, it is an additional performance-based training technique that can be used to instill confidence in PPE.

7. Radio Procedures

7.1 Requesting a Hot Status

FACILITY: RANGE OPERATIONS, THIS IS CBRN CHAMBER, OVER

RANGE OPERATIONS: CBRN CHAMBER, THIS IS RANGE OPERATIONS. GO AHEAD, OVER.

FACILITY: RANGE OPERATIONS, THIS IS CBRN CHAMBER. REQUEST A HOT TIME, OVER.

RANGE OPERATIONS: CBRN CHAMBER, THIS IS RANGE OPERATIONS, DO YOU PHYSICALLY HAVE ON SITE REQUIRED MEDICAL SUPPORT WITH EQUIPMENT, FACILITY SAFETY SOP BINDER, RED RANGE FLAG FLYING, OVER.

FACILITY: RANGE OPERATIONS, THIS IS CBRN CHAMBER, YES, OVER.

RANGE OPERATIONS: CBRN CHAMBER, THIS IS RANGE OPERATIONS. I GIVE YOU A HOT TIME OF ____ HOURS. MY INITIALS ARE _____. CONFIRM HOT TIME AND SEND YOUR FACILITY OIC INITIALS, OVER.

FACILITY: RANGE OPERATIONS, THIS IS CBRN CHAMBER. I CONFIRM HOT TIME OF _____. OIC INITIALS ARE _____, OVER.

RANGE OPERATIONS: CBRN CHAMBER, THIS IS RANGE OPERATIONS. CONDUCT RADIO CHECKS WITH RANGE OPERATIONS HOURLY AT THE TOP OF THE HOUR, YOUR FIRST RADIO CHECK IS DUE AT _____. RANGE OPERATIONS OUT.

7.2 Requesting a Cold Status

FACILITY: RANGE OPERATIONS, THIS IS CBRN CHAMBER, OVER.

RANGE OPERATIONS: CBRN CHAMBER, THIS IS RANGE OPERATIONS. GO AHEAD, OVER.

FACILITY: RANGE OPERATIONS, THIS IS CBRN CHAMBER. REQUEST A COLD TIME, OVER.

RANGE OPERATIONS: CBRN CHAMBER, THIS IS RANGE OPERATIONS. I GIVE YOU A COLD TIME OF _____. MY INITIALS ARE _____. CONFIRM COLD TIME, SEND YOUR OIC INITIALS, AND YOUR NUMBER OF PERSONNEL TRAINED, OVER.

FACILITY: RANGE OPERATIONS, THIS IS CBRN CHAMBER. I CONFIRM COLD TIME OF _____. OIC INITIALS ARE _____, WITH _____ (#) PERSONNEL TRAINED, OVER.

RANGE OPERATIONS: CBRN CHAMBER, THIS IS RANGE OPERATIONS, ROGER, OUT.

7.3 Change of OIC

FACILITY: RANGE OPERATIONS, THIS IS CBRN CHAMBER, OVER.

RANGE OPERATIONS: CBRN CHAMBER, THIS IS RANGE OPERATIONS. GO AHEAD, OVER.

FACILITY: RANGE OPERATIONS, THIS IS CBRN CHAMBER. REQUEST A CHANGE OF OIC, OVER.

RANGE OPERATIONS: CBRN CHAMBER, THIS IS RANGE OPERATIONS. SEND THE LAST NAME AND THE INITIALS OF THE NEW OIC, WITH YOUR INITIALS, OVER.

FACILITY: RANGE OPERATIONS, THIS IS CBRN CHAMBER. NEW OIC LAST NAME IS _____, NEW OIC INITIALS ARE _____. MY INITIALS ARE _____, OVER.

RANGE OPERATIONS: CBRN CHAMBER, THIS IS RANGE OPERATIONS. ROGER, OUT.

7.4 Requesting a Radio Check (Hourly at the Top of the Hour)

FACILITY: RANGE OPERATIONS, THIS IS CBRN CHAMBER. RADIO CHECK, OVER.

RANGE OPERATIONS: CBRN CHAMBER, THIS IS RANGE OPERATIONS, ROGER RADIO CHECK, OUT.

8. Safety Brief

This general safety brief is not all inclusive and requires the Range OIC / RSO to include commander's guidance, and/or any unit specific or other situational dependent areas of concern.

1. Identify the Officer in Charge (OIC) and the Range Safety Officer (RSO) at a minimum.
2. Identify the Location of:
 - a) Obstacle Instructors
 - b) Medic & the Evacuation Vehicle
 - c) Others as required
3. Prescribed uniforms and personal protection requirements (helmet and leather gloves as applicable).
4. Locations: Break/Smoking Areas, latrines, mess area, parking and bleacher site. Also include any off limit or restricted areas.
5. Procedures for Medical Emergency.
6. Severe weather plan, environmental requirements, issues and concerns.
7. ALL VEHICLES on this Range will have a GROUND GUIDE.
8. NO running, pushing, NO shoving or horseplay at ANY time.
9. If you observe ANY UNSAFE situation, call & indicate "CEASE TRAINING" IMMEDIATELY.
10. Prior to entering the chamber, ensure that your mask fits and is working correctly.
11. If you cannot get a mask to fit because of your head size, you will switch a mask with one of your battle buddies after they go through the CS chamber.
12. **NOTE: Identify personnel who cannot go into the chamber for medical reasons such as heart problems, respiratory problems, large open wounds, exposed casts, or pregnancy.**
13. Instruct all personnel wearing contact lenses to remove them.
14. **NOTE: Have personnel with problems report to an instructor for further evaluation.**
15. **NOTE: Explain and use demonstrators or visual aids.**
16. Soldiers enter chamber along the walls. Once everyone is inside the 2 minutes will start. Instructors will look for Soldiers that cannot get their mask to seal.
17. **NOTE: Soldiers that cannot get their mask to seal will be sent out of the chamber, refitted and sent back through with another group.**
18. Soldiers clear and reseal the mask a minimum of 3 times to clear the CS from the mask.
19. After all Soldiers have re-masked the instructor tells them (in groups of 10) to remove their mask and immediately WALK to the exit door.
20. **NOTE: Emphasize walking.**
21. With their masks removed, the Soldiers walk around the exterior designated area until the effects of the gas subside.
22. After the briefing, line the Soldiers up and conduct the exercise as described above

NOTE: Insert appropriate risk management worksheet hazards and control measures identified as applicable as required and/or applicable.

9. Risk Management & Mitigation

OIC will review, add and update DA Form 2977, Deliberate Risk Management Worksheet.

THIS PAGE INTENTIONALLY
LEFT BLANK

10. Reference Information, Reports & Forms

INDEX

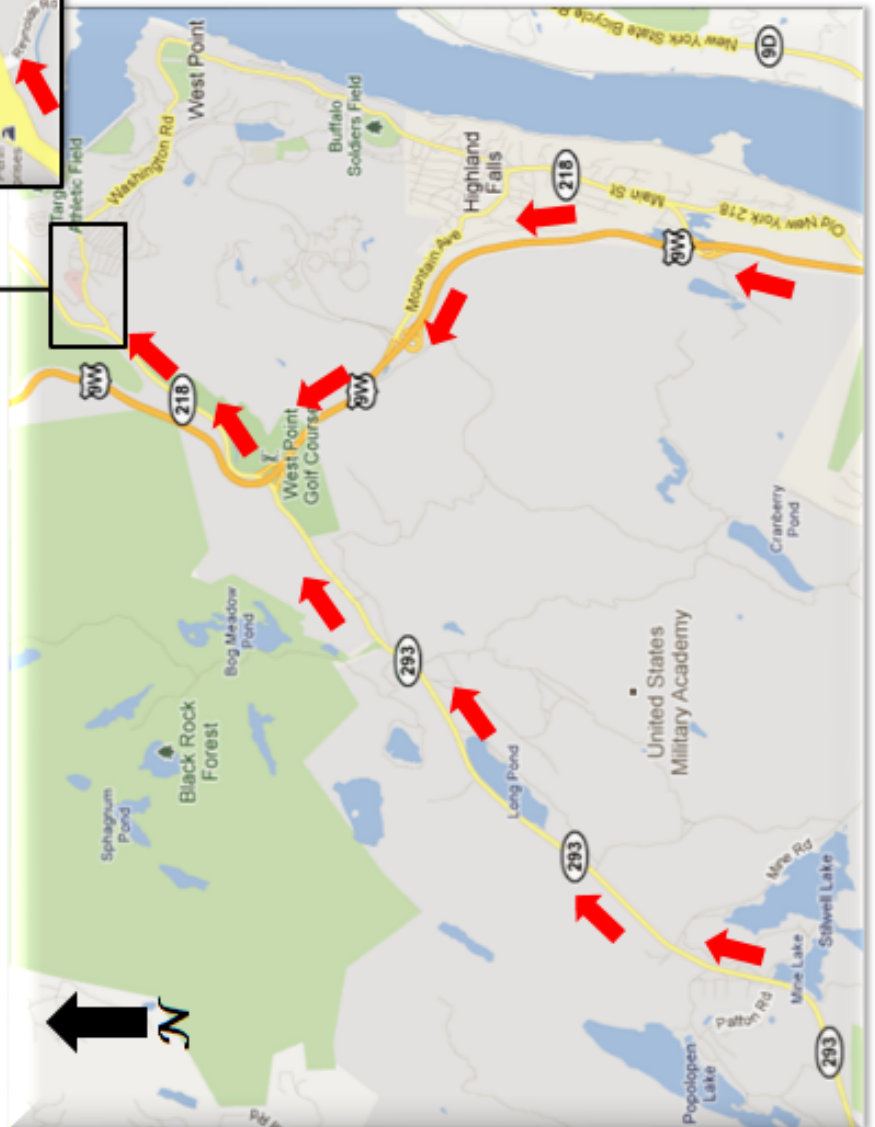
TAB	NAME
10A	Local Strip Map to Keller Army Community Hospital
10B	Local Strip Map to Saint Luke's Cornwall Community Hospital
10C	Open



DIRECTIONS

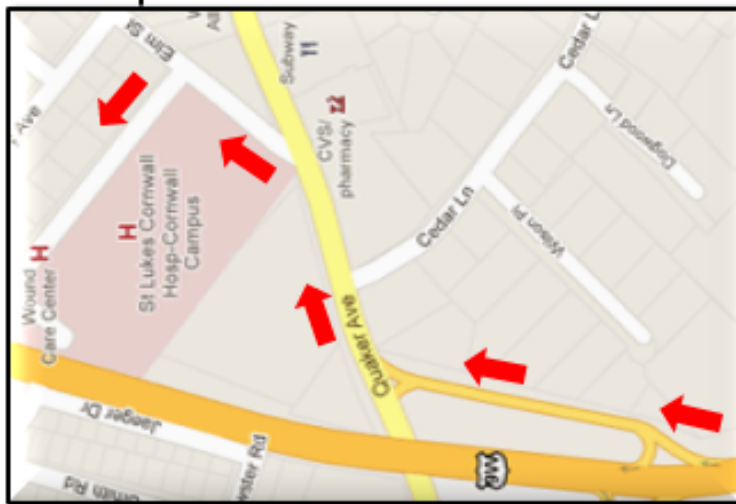
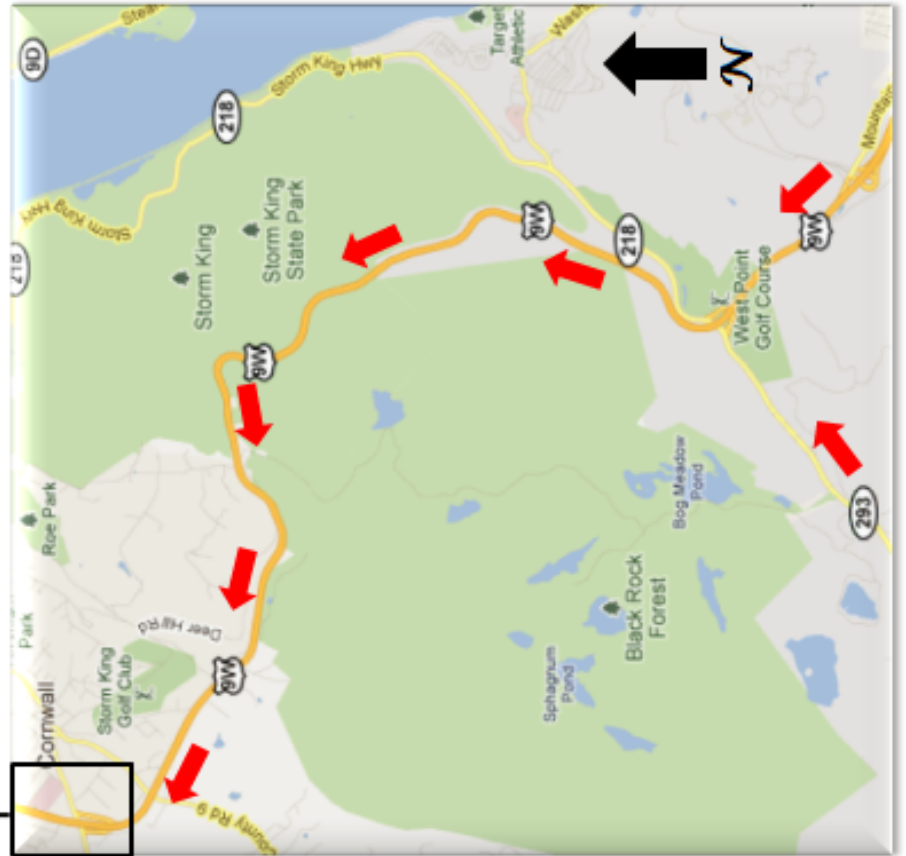
- North on Route 293 or 9W.
- Exit onto Route 218 N (approx. 1.2 miles to Washington Road Gate).
- Enter Installation via Washington Road Gate.
- Keller Army Community Hospital is on the left (approx. 3/10 miles from Washington Road gate).

**LOCAL STRIP MAP TO
KELLER ARMY COMMUNITY HOSPITAL
Phone #: (845) 938-4004**



Tab 10A – Strip Map – Keller Army Community Hospital

**LOCAL STRIP MAP TO
ST. LUKES WOUND CARE CENTER
&
ST. LUKES CORNWALL HOSPITAL
Phone #: (845) 458-4512**



DIRECTIONS

- North on Route 293 or 9W.
- Continue North on 9W to Cornwall.
- Exit 9W onto Quaker Ave exit.
- Turn left onto Elm Street.

Tab 10B – Strip Map to St. Lukes Cornwall Hospital