

Identifier: DPTM-SOP-MCC	Revision: 1	Effective Date: 24 Jul 18
Document Approval Date: 15 Feb 18		
Proponent: USAG-WP, Dir Plans, Tng, Mob & Security		



U.S. Army Garrison-West Point DPTMS – Range Operations Policy & Procedures

Standard Operating Procedure Bull Run Water Confidence Course



Department of the Army
U.S. Army Garrison West Point
United States Military Academy
West Point, New York 10996-5000

Document History

Document Location

All hard copies will be located at Building 1403 Range Operations Fire Desk. Also, electronic copies may be retrieved via DPTMS website (Training Link), or upon request.

Revision History

Date of this revision: 15 Feb 18	Date of next revision:
----------------------------------	------------------------

Revision Number	Revision Date	Summary of Changes	Author
1	10-3-16	Minor Changes	Lake

Approvals

This document requires the following approvals:

Name	Title
	USAG-WP, Range Manager
	USAG-WP, Chief of Training
	USAG-WP, Director of Plans, Training, Mobilization & Security

Distribution Formula

This document has been distributed to:

Office	Name Title
Scheduled User	Issued Hard-bound Binder copy during use of range/facility
USAG-WP	Range Operations Office

Table of Contents

1.	General Information.....	5
1.1	Purpose.....	5
1.2	Applicability	5
1.3	Responsibility.....	5
1.4	References.....	5
1.5	Suggested Improvements	5
2.	Specialty Course Description & Characteristics.....	6
2.1	Course Description.....	6
2.2	Course Location.....	Error! Bookmark not defined.
2.3	Standard Confidence Obstacles Available.....	6
2.4	Specific Safety Measures.....	6
2.5	Course Support Facilities	6
2.6	Authorized Parking.....	6
2.7	Communications	6
3.	Safety & Security Procedures.....	7
3.1	Individual Personal Protection Equipment (PPE).....	7
3.2	Facility Specific Safety Measures.....	7
4.	Range Operational Requirements/Responsibilities.....	8
4.1	Range Officer in Charge (OIC) / Range Safety Officer (RSO) Appointment Requirements	8
4.2	Range Officer in Charge (OIC).....	8
5.	Specialty Course Medical Requirements & Evacuation	11
5.1	Unit Medical Support Requirements	11
5.2	Keller Army Community Hospital (KACH).....	11
5.3	Serious Incident Report (SIR) Requirements.....	11
5.4	Emergency MEDEVAC Flight Requests.....	12
5.5	Hospital Strip Maps & Directions	12
6.	Water Confidence Course Concept of Operations.....	14
6.1	Water Confidence Course Operations	Error! Bookmark not defined.
7.	Radio Procedures.....	17
7.1	Requesting a Hot Status	17
7.2	Requesting a Cold Status.....	17
7.3	Change of OIC	18
7.4	Requesting a Radio Check (Hourly at the Top of the Hour).....	18

8. Safety Brief.....19

9. Risk Management & Mitigation20

10. Reference Information, Reports & Forms21

1. General Information

1.1 Purpose

This Standard Operating Procedure (SOP) provides standard instructions and checklists for unit and individuals using the Bull Run Water Confidence Course. It defines standardized steps and procedures to be followed for its safe and efficient use.

This SOP is directive based and complies with applicable United States Military Academy and Department of the Army Regulations, current doctrine, policy and guidance.

1.2 Applicability

This SOP is designed to provide units with safe operating procedures and guidelines. It applies to all units of the U. S. Armed Forces, civilian organizations, and individuals who are authorized to use this training facility at West Point, and by all applicable users IAW West Point Regulation 350-1, TC 21-21, Water Survival Training and the UMSA Department of Physical Education (DPE) SOP for Water Obstacle Course/Confidence Course.

1.3 Responsibility

Use this SOP in conjunction with TC 21-21, DPE SOP and West Point Reg. 350-11 which provide specific and detailed specialty course responsibilities for using units. These directed and required actions are necessary for the safe conduct of negotiating obstacles and physical readiness training. Full compliance IAW the afore-mentioned regulations as well as steps and procedures of this SOP, is the responsibility of the commanders, as well as the personnel of using organizations or units. Personnel of any non-DoD civilian agency or activity, using West Point ranges and training facilities must also comply with the provisions and requirements outlined in West Point Reg. 350-11.

1.4 References

All required and related publications are those covering the training conducted and those listed in the applicable chapters and Appendix A of West Point Reg. 350-11 or other respective regulations, policies and procedures. Additional references are also listed in TC 21-21, Water Survival Training.

1.5 Suggested Improvements

The proponent of this Standard Operating Procedure (SOP) is the Director of Plans, Training, Mobilization and Security, U.S. Army Garrison West Point, ATTN: DPTMS, Building 621 Wilson Road, United States Military Academy, West Point, New York 10996-5000. Users are encouraged to send comments and suggested improvements on DA Form 2028 (Recommended Changes to Publications and Blank Forms).

2. Specialty Course Description & Characteristics

2.1 Course Description

The Bull Run Water Confidence Course (WCC) is designed to instill confidence in the mental and physical abilities and cultivates the spirit and daring that helps develop physical capacities and fundamental skills and abilities that are important for combat operations.

The course is located on Camp Buckner, vicinity grid WL78667826

2.2 Standard Confidence Obstacles Available

The WCC consists of three obstacles: The Beam Walk, Rope Drop and Slide for life. Additionally, there is a practice Beam Walk.

2.3 Course Support Facilities

The Bull Run WCC has the following support facilities to support operations:

Porta Potties, White Oak Island Storage Area (Trolleys/Mats)
--

NOTES: None

2.4 Authorized Parking

Military Vehicles – Parking is available outside the gate to White Oak Island.

Civilian Privately Owned Vehicles (POVs) – Adjacent to the WCC in designated parking areas.

2.5 Communications

All specialty courses must maintain two separate means of communication with Range Operations at all times. Primary means of communication with Range Operations will be by Motorola Handheld “Livefire” Channel. Alternate means of communication when available shall be by commercial telephone at the training facility if so equipped with.

3. Safety & Security Procedures

3.1 Individual Personal Protection Equipment (PPE)

- a. Personnel stationed at the Slide for Life and Balance Beam must be tied-off to structure to prevent falling.
- b. Weak swimmers and personnel with weak upper body strength will wear a military PT belt around their waist.
- c. Other PPE at the Commander's discretion.

3.2 Facility Specific Safety Measures

- a. Specific Safety Measures that must be conducted **PRIOR** to training:
 1. Coordination with the USCC Department of Physical Education (DPE) must be completed prior to use. DPE will either provide instructor training on the operation of obstacles prior to training or assist/supervise the training.
 2. Inspection of structural integrity and safety devices prior to obstacle use.
 3. Safety equipment (nets, pads, ropes, trolleys) must be inspected and tested prior to use.
 4. An underwater survey must be conducted to identify and remove underwater hazards (rocks, logs, trash, debris).
 5. Water depth and temperature must be monitored prior to, and throughout training, to ensure hazardous conditions do not exist.
 6. Training will be postponed / modified due to inclement weather.
 7. General safety precautions that must be considered and conducted:
 8. Muscular strength and or muscle failure physical training should NOT BE conducted within 12 hours prior to the use of the Marne Confidence Course.
 9. Range Operations maintains the WCC. At times certain obstacles may be closed off due to maintenance deficiencies and will be CLOSED and marked OFF LIMITS.
 10. OIC maintains a current deliberate risk assessment updated prior to each day's training and updated as conditions change.

4. Range Operational Requirements/Responsibilities

4.1 Range Officer in Charge (OIC) / Range Safety Officer (RSO) Appointment Requirements

WEAPON SYSTEM	OFFICER IN CHARGE (OIC)			RANGE SAFETY OFFICER (RSO)		
	OFF	CADET	NCO	OFF	CADET	NCO
Practice hand grenade simunitions training devices; simulators, and small arms (5.56mm and below)	X	N/A	E6(P)	X	X (Wpns Qualified)	E5(P)
Chemical Agents (CS) and smoke	X	N/A	E6 (MOS Qualified)	X	N/A	E5
Aerial gunnery, live grenades, grenade launchers, grenade machine guns; Live mines, and demolitions.	X	N/A	E7	X	N/A	E6
Field Artillery and LASER ranges	X (0-3)	N/A	N/A	Battery XO X	N/A	N/A
Live Fire Exercises using organic weapons, team through squad.	X	N/A	N/A	X	N/A	E7
Mortars	X	N/A	N/A	X	N/A	E6
Direct fire antitank rockets	X	N/A	E7	X	N/A	E6
Specialty Non-LFX Courses	X	N/A	E6	X	X	X
Specialty Non-LFX Courses (Rappel) * Rappel Master Certified	X*	N/A	E7*	X	N/A	E6

Table 4-1, OIC / RSO Appointment Requirements

4.2 Range Officer in Charge (OIC)

The Range OIC holds the responsibility and accountability for the conduct of the activity and the adherence to governing regulations and guidance.

4.2.1 OIC Qualifications

A commissioned, warrant, or noncommissioned officer (NCO) may serve as Specialty Course OIC. NCOs serving as OIC will be in the grade as shown in Table 4-1 above, at a minimum. Facility OICs will be qualified on the safe conduct of obstacle negotiation and will have satisfactorily completed a safety certification program for which they are responsible conducted by their Battalion/Unit (O5 & above Command) to which they are assigned.

4.2.2 OIC Actions & Procedures before Facility Occupation

STEP	ACTION	TAKEN
1	Thoroughly plan the operation and/or training activity and determine the personnel and equipment support requirements.	
2	Be command safety certified and appointment is completed, and on file at Range Operations.	
3	Receive the mandatory Range Operations briefing within ONE DAY prior to use.	
4	Ensure qualified obstacle instructors are trained on the operation and correct negotiation of each obstacle prior to running the course.	
5	Verify that all personnel in a direct supervisory role or safety position are familiar with the provisions of this SOP, West Point Reg. 350-11, and TC 21-21 and DPE WOC/COC SOP.	
6	Ensures that the required and appropriate medical support personnel are qualified. All appropriate equipment and supplies are available to support the training activity.	
7	Check in at Range Operations upon arrival to the installation to receive an updated briefing and sign for the facility and necessary support equipment.	
8	Develops a composite risk management worksheet for all phases of the range operation(s) and/or training activity, and mitigate initial high and extremely high hazards through appropriate control measures, using DA Fm 7566.	

4.2.3 OIC Actions & Procedures before Operations

STEP	ACTION	TAKEN
1	Ensures the correct training facility is occupied, and conducts a joint inventory with a Range Operations representative to ensure the presence and condition of the facilities, safety equipment and general condition of each obstacle.	
2	Conducts an OIC safety brief to the obstacle instructors, reinforcing their duties and responsibilities on the conduct of each obstacle and general safety requirements.	
3	Directs and supervises that the required designated areas of the training facility are established and set up as required/planned.	
4	Establishes primary radio and secondary telephone communications with Range Operations, and notifies Range Operations upon initial occupation.	
5	Verify that the required medical personnel and equipment support is on site, with strip maps to local medical treatment facilities is present, prior to requesting a HOT status.	
6	Verify the continuous safety and security of all personnel as they negotiate obstacles. Ensure that obstacle negotiation demonstrations are conducted when necessary.	
7	Verify that all personnel wear the required personal protection equipment, as the commander dictates.	
8	Ensure all applicable references and regulations are physically present and on hand:	

9	Notifies Range Operations and requests permission to place the range in a HOT status (Refer to paragraph 7.1).	
10	Implements risk management actions and applicable control measures identified for this phase of the range operations and/or training event.	

4.2.4 OIC Actions & Procedures during Operations

STEP	ACTION	TAKEN
1	Be present at all times at the confidence course training facility while the facility is in a HOT status, and maintains a constant observation of the facility to ensure that obstacles are being safely and properly negotiated. Greet and brief all range visitors/VIPs, and Range Operations personnel.	
2	Verify that all personnel prior to negotiating obstacles receive a safety briefing, and that each obstacle is negotiated properly and safely. (Reference Chapter 9).	
3	Ensures that primary and secondary means of communication with Range Operations are maintained, and that hourly radio checks are performed (Refer to paragraph 7.4)	
4	Immediately calls or announces a self-imposed "Cease Training" and notifies Range Operations when:	
5	Any unsafe action is observed or reported by ANY individual observing an unsafe act.	
5a	When communications are lost with Range Operations and/or Gate Guards.	
5b	When any personal injury occurs.	
5c	Whenever the OIC or medical support leaves the training facility.	
5d	Notifies Range Operations when a change in OIC is needed (refer to paragraph 7.3).	
6	Implements risk management actions and applicable control measures identified for this phase of the range operations and/or training event.	

4.2.5 OIC Actions & Procedures after Operations

STEP	ACTION	TAKEN
1	Notify Range Operations upon completion of training and request permission to go COLD (reference procedure 7.2). Be prepared to report:	
1a	Number of personnel trained.	
2	Contact Range Operations for range clearance/inspection after performing the following:	
2a	Remediate any obstacle deficiency created during facility use (i.e. raking sand pits) and replace safety equipment in appropriate storage area.	
2b	Police range for all trash and place in local dumpster. NO MREs, kitchen waste will be placed in the dumpsters.	
2c	Check overall condition of the range to include all range support facilities and repair any deficiencies or faults discovered if applicable.	
2d	Hand receipted range equipment and supplies are recovered, cleaned and prepared for turn-in.	
3	Conduct a joint inventory IAW range clearance agreement with a Range Operations representative for clearance of the training area, and secure the facility.	
4	Return all hand-receipted range equipment, along with any applicable reports/forms to Range Operations.	

5. Specialty Course Medical Requirements & Evacuation

5.1 Unit Medical Support Requirements

Units will comply with the following range medical support requirements:

- a. Two trained Medics (MOS 91B) or EMTs. These individuals will be equipped with a litter, Spine board, neck brace and radio communication, and a complete medical aid bag, containing all required CL VIII items with a valid expiration date.
- b. A dedicated medical evacuation vehicle, capable of transporting a litter, and properly equipped, and with a current PMCS. Medical aid personnel assigned to these ranges, along with the supporting medical vehicle, will not be used for any other duty.
- c. Safety Boat (Designated, Powered Rescue Boat) with 2 Rescue Personnel (Red Cross Certified Lifeguards). The boat operator cannot be considered as one of the rescue personnel.
- d. Type (V) Vest or other Water Rescue Items.

5.1.1 Execution

- a. Using unit medical personnel will review and familiarize themselves with the strip map route(s) to KACH ER and the local community hospital prior to conducting operations.
- b. Whenever the dedicated medical aid person or vehicle must leave the area for any reason the training facility must "Cease Training" and remains in a "COLD" status until a replacement is provided, or until the assigned vehicle and medical personnel have returned to the facility. Range Operations will then grant the unit permission to re-open the facility and place the facility in a "HOT" status.
- c. Medical support personnel at the facility will provide treatment for minor injuries and basic first-aid for life-threatening injury or illness.
- d. Medical evacuation vehicles will display all frequencies and telephone numbers in case of immediate use:
 - a. Range Operations Frequency is Motorola Handheld "Livefire" Channel.
 - b. West Point Fire & Emergency Services Division – 845.938.5197
 - c. KACH ER frequency is VHF 150.7.
 - d. KACH ER – 845.938.4004 / 5169.

5.2 Keller Army Community Hospital (KACH)

Injuries and/or illness requiring immediate emergency support will be immediately reported to the KACH ER, with the location of the site for patient evacuation by KACH.

5.3 Serious Incident Report (SIR) Requirements

Full and immediate medical attention directed at the patient is the first and foremost priority. As soon as possible, the OIC will contact Range Operations and report the medical injury/accident. Be prepared to provide at a minimum "the Five W's" (Who, What, When, Where and Why).

5.4 Emergency MEDEVAC Flight Requests

The USMA does NOT have an organic MEDEVAC capability to support training complex operations; units and organizations will plan medical evacuation with their organic assets. Stat Flights are for the emergency evacuation of injured personnel by air ambulance. Only the emergency first responder on site, DES dispatcher or KACH medical personnel are authorized to request or terminate a MEDEVAC mission.

To obtain a Stat Flight, contact Range Operations by Motorola Handheld "Livefire" Channel or by telephone at (845)938-3930. After Hours the Military Police Dispatch at (845)938-3333. Air Frequency is VHF 126.20.

9-LINE MEDEVAC		
ANNOUNCED		LINE INFO DESCRIPTION
LINE	LINE INFO	
1		Location of the Pick-Up site by 6-digit grid and any prominent terrain features nearby.
2		Unit Identification
3	A= B=	Number of Patients by evacuation category/precedence A=Urgent (requires immediate evacuation to prevent loss of life B=Priority (serious injury, but <u>NOT</u> life threatening
4	A= B= C= D=	Special equipment needed: A=none B=hoist C=extraction equipment D=ventilator
5	A= B=	Number of patients A=litter B=ambulatory
6		Number and types of wounds, injuries and illnesses
7		Method of marking landing zone/pick-up site A=panels B=pyrotechnic signal C=smoke signal D=none E=other
8		Patient nationality and status A=US military B=US civilian C=other (describe)
9		Terrain description of pick-up site, any site hazards; if none=so state

5.5 Hospital Strip Maps & Directions

5.5.1 Keller Army Community Hospital

Reference Tab 10A, Local Strip Map to Keller Army Community Hospital

5.5.2 *St. Luke's Community Cornwall Campus Hospital, Cornwall, NY*

Reference Tab 10B, Local Strip Map to Saint Luke's Community Hospital.

6. Bull Run Water Confidence Course Concept of Operations

The Bull Run Water Confidence Course (WCC) is designed to instill confidence in the mental and physical abilities and cultivates the spirit and daring, that helps develop physical capacities and fundamental skills and abilities that are important for combat operations.

6.1 INSTRUCTIONS TO CADET CHAIN OF COMMAND

1. The Cadet Chain of Command will designate all weak swimmers and weak upper body cadets, **THESE CADETS WILL WEAR A PT BELT AROUND THEIR WAIST**. This is not hazing but a risk mitigation procedure. All cadets must be able to:

- 1.1.1. Flexed arm hang for 10 seconds.
- 1.1.2. Monkey crawl head or feet first on a horizontal rope for 15 feet. (a practice rope is set up on the WCC site this week)
- 1.1.3. Swim 150 yards.

- 1.2 **REHEARSALS:**

- 1.1.4. Cadet Chain of Command will conduct a rehearsal of WCC scheme of maneuver and all WCC commands.
- 1.1.5. Cadet Chain of Command will ensure proper uniform standards are met: Trainees will be in ACU pants, Boots, Tan T-Shirt, Personal Floatation Device (PFD), and free of any debris or trash in pockets.

2. **OUTCOMES FOR CADETS TRAINING**

- 2.1. Negotiate the Beam Walk within 60 seconds without touching beam
- 2.2. Negotiate the Rope Drop IAW the announced commands
- 2.3. Negotiate Slide for Life safely and without assistance
- 2.4. Demonstrate physical fitness and the Warrior Ethos

3. **COMMANDS AND EXECUTION OF BEAM AND ROPE TRAVERSE**

- 3.1. **Execution:**

- 3.1.1. One cadet on first tower, one cadet at base of first tower, one cadet on center tower, one cadet on far tower, and one cadet at water exit point.
- 3.1.2. The CDT CIC at the base of tower will send a CDT up the ladder once the CDT on tower one begins walking across the first beam.
- 3.1.3. The CDT CIC on tower one will instruct the CDT to "go" when the CDT on the center tower begins moving forward and then observe the CDT walking across beam 1.
- 3.1.4. The CDT CIC on the center tower will instruct the CDT to "go" when the CDT on the far tower has mounted the rope.

- 3.1.5. The CDT CIC on the far tower will instruct the CDT to mount the rope head first and monkey crawl to the Recondo "tab" (refer to MOI for detailed instructions).
- 3.1.6. Once at the tab on the rope drop the cadet must request "permission to hang" and then the cadet will be given permission to "hang."
- 3.1.7. Once in a hanging position, cadet will request "permission to drop," and then cadet will be given permission to "drop."
- 3.1.8. When the CDT surfaces from the water, they will signify a safe insertion by tapping their head. The far tower CIC will tell him/her if she is a "Go" or "No Go."

3.2. Control of Personnel waiting to executed training

- 3.2.1. The WCC is an excellent opportunity to develop the Warrior Ethos, team cohesion, and esprit de corps. Safety is the most important factor. Keep all cadets in designated holding areas when not participating in the WCC.
- 3.2.2. Maintain uniform standards. The uniform for the WCC is; ACU's, boots, and PFD. Cadet cadre uniform is Tan CIC shirt, ACU pant and cap, and boots. All CDT CIC on obstacles will be secured to the obstacle with a safety line consisting of a midline and end of the line bowline.

4. SLIDE FOR LIFE

4.1. Leadership Positioning

- 4.1.1. One cadet tower CIC on the top of the tower, one at base of tower, one on middle platform, and two operating pulley system.
- 4.1.2. One cadet at the top of the tower will be responsible for the safe execution of the slide for life (a DPE instructor will supervise and advise the tower CIC). The tower CIC will tell the middle platform to send up the next CDT when one CDT exits the slide for life. The tower CIC will remove the trolley from the pulley system and place it on the cable. The CIC will instruct the next CDT to hold the trolley and then will emplace the snap link. The tower CIC will give the hand and arms signal "ok" to the flagman by tapping the top of his hand with and open palm and wait until he receives the same return signal from the flagman. (Refer to MOI for detailed instructions).
- 4.1.3. One cadet will be positioned on the middle platform and will control CDT movement to the top of the tower. Only one CDT will move on the ladder to the top platform at a time.
- 4.1.4. Two cadets should be positioned at the middle platform at all times.
- 4.1.5. One cadet will be positioned at the base of the tower and will instruct CDT's to move to the middle platform.
- 4.1.6. Two cadets will assume duties as trolley pulley operators. Their uniform is ACU's, **Kevlar/ACH**, and **leather gloves**. They will pull the trolleys up the pull and ensure that no one is directly under the pulley in case a trolley falls from the tower. These cadets should be rotated out frequently.
- 4.1.7. One cadet will assume the duties of the flagman (read flagman signals listed above).
- 4.1.8. One cadet will remove the trolleys from the cable and inspect each trolley for wear. Let DPE cadre know if any nuts/bots are backing out (inspect sliver index marks).

- 4.2. Safety: If at any time a Cadet witnesses an unsafe act or a failure of equipment, training will be halted.

5. COMMANDS AND EXECUTION OF SLIDE FOR LIFE

- 5.1. When atop the 75 foot tower the cadet will be given the command, "mount the pulley," at this time the cadet will grab the pulley with both hands.
- 5.2. The tower OIC and flagman will hand and arm signal that they are ready and then the cadet will be given the command, "go." At this time the cadet will execute a half pull up to clear the platform and begin the slide for life.
- 5.3. Once on the slide for life, the flagman will give the command, "raise your feet," (white flag raised over flagman's head) signaling the cadet to raise his/her legs parallel to the surface of the water. The command "raise your feet" should be given when the cadet is half way down the cable.
- 5.4. On the command "drop," (flag down) the cadet will let go of the trolley and enter the water. The command "drop" should be given when the pulley reaches the red and white "candy-striped" mark on the cable approximately 75' from the yellow padding.
- 5.5. Two cadet CIC's per slide for life and beam walk/rope drop. Maintain roster of GO/NO GO status, maintain control of PFD's and pulleys, and control flow of CDT Company's.

7. Radio Procedures

7.1 Requesting a Hot Status

FACILITY: RANGE OPERATIONS, THIS IS WATER CONFIDENCE COURSE, OVER

RANGE OPERATIONS: WATER CONFIDENCE COURSE, THIS IS RANGE OPERATIONS. GO AHEAD, OVER.

FACILITY: RANGE OPERATIONS, THIS IS WATER CONFIDENCE COURSE. REQUEST A HOT TIME, OVER.

RANGE OPERATIONS: WATER CONFIDENCE COURSE, THIS IS RANGE OPERATIONS, DO YOU PHYSICALLY HAVE ON SITE REQUIRED MEDICAL SUPPORT WITH EQUIPMENT, FACILITY SAFETY SOP BINDER, RED RANGE FLAG FLYING, OVER.

FACILITY: RANGE OPERATIONS, THIS IS WATER CONFIDENCE COURSE, YES, OVER.

RANGE OPERATIONS: WATER CONFIDENCE COURSE, THIS IS RANGE OPERATIONS. I GIVE YOU A HOT TIME OF _____ HOURS. MY INITIALS ARE _____. CONFIRM HOT TIME AND SEND YOUR FACILITY OIC INITIALS, OVER.

FACILITY: RANGE OPERATIONS, THIS IS WATER CONFIDENCE COURSE. I CONFIRM HOT TIME OF _____. OIC INITIALS ARE _____, OVER.

RANGE OPERATIONS: WATER CONFIDENCE COURSE, THIS IS RANGE OPERATIONS. CONDUCT RADIO CHECKS WITH RANGE OPERATIONS HOURLY AT THE TOP OF THE HOUR, YOUR FIRST RADIO CHECK IS DUE AT _____. RANGE OPERATIONS OUT.

7.2 Requesting a Cold Status

FACILITY: RANGE OPERATIONS, THIS IS WATER CONFIDENCE COURSE, OVER.

RANGE OPERATIONS: WATER CONFIDENCE COURSE, THIS IS RANGE OPERATIONS. GO AHEAD, OVER.

FACILITY: RANGE OPERATIONS, THIS IS WATER CONFIDENCE COURSE. REQUEST A COLD TIME, OVER.

RANGE OPERATIONS: WATER CONFIDENCE COURSE, THIS IS RANGE OPERATIONS. I GIVE YOU A COLD TIME OF _____. MY INITIALS ARE _____. CONFIRM COLD TIME, SEND YOUR OIC INITIALS, AND YOUR NUMBER OF PERSONNEL TRAINED, OVER.

FACILITY: RANGE OPERATIONS, THIS IS WATER CONFIDENCE COURSE. I CONFIRM COLD TIME OF _____. OIC INITIALS ARE _____, WITH _____ (#) PERSONNEL TRAINED, OVER.

RANGE OPERATIONS: WATER CONFIDENCE COURSE, THIS IS RANGE OPERATIONS, ROGER, OUT.

7.3 Change of OIC

FACILITY: RANGE OPERATIONS, THIS IS WATER CONFIDENCE COURSE, OVER.

RANGE OPERATIONS: WATER CONFIDENCE COURSE, THIS IS RANGE OPERATIONS. GO AHEAD, OVER.

FACILITY: RANGE OPERATIONS, THIS IS WATER CONFIDENCE COURSE. REQUEST A CHANGE OF OIC, OVER.

RANGE OPERATIONS: WATER CONFIDENCE COURSE, THIS IS RANGE OPERATIONS. SEND THE LAST NAME AND THE INITIALS OF THE NEW OIC, WITH YOUR INITIALS, OVER.

FACILITY: RANGE OPERATIONS, THIS IS WATER CONFIDENCE COURSE. NEW OIC LAST NAME IS _____, NEW OIC INITIALS ARE _____. MY INITIALS ARE _____, OVER.

RANGE OPERATIONS: WATER CONFIDENCE COURSE, THIS IS RANGE OPERATIONS. ROGER, OUT.

7.4 Requesting a Radio Check (Hourly at the Top of the Hour)

FACILITY: RANGE OPERATIONS, THIS IS WATER CONFIDENCE COURSE. RADIO CHECK, OVER.

RANGE OPERATIONS: MARNE CONFIDENCE COURSE, THIS IS RANGE OPERATIONS, ROGER RADIO CHECK, OUT.

8. Safety Brief

This general safety brief is not all inclusive and requires the Range OIC / RSO to include commander's guidance, and/or any unit specific or other situational dependent areas of concern.

NOTE: Users should prepare for the course by doing conditioning exercises for at least 4 weeks before they are allowed to negotiate the Confidence Course.

1. Identify the Officer in Charge (OIC) and the Range Safety Officer (RSO) at a minimum.
2. Identify the Location of:
 - a) Obstacle Instructors
 - b) Medic & the Evacuation Vehicle
 - c) Others as required
3. Prescribed uniforms and personal protection requirements (helmet and leather gloves as applicable).
4. Locations: Break/Smoking Areas, latrines, mess area, parking and bleacher site. Also include any off limit or restricted areas.
5. Procedures for Medical Emergency.
6. Severe weather plan, environmental requirements, issues and concerns.
7. ALL VEHICLES on this Range will have a GROUND GUIDE.
8. Movement on obstacles as directed by the Obstacle instructor.
9. NO pushing, NO shoving or horseplay at ANY time.
10. If you observe ANY UNSAFE situation, call & indicate "CEASE TRAINING" IMMEDIATELY.
11. The course should not be used in wet weather if it makes the obstacles slippery.
12. Obstacle instructors should inspect the obstacles for safety hazards (protruding nails, unsafe landing pits, etc.) and ensure all jewelry is removed prior to negotiating obstacles.
13. Muscular strength/muscle failure physical training should NOT be conducted within 12 hours prior to the Confidence course negotiation of obstacles.

NOTE: Insert appropriate risk management worksheet hazards and control measures identified as applicable as required and/or applicable.

9. Risk Management & Mitigation

OIC will review, add and update DA Form 2977, Deliberate Risk Assessment Worksheet.

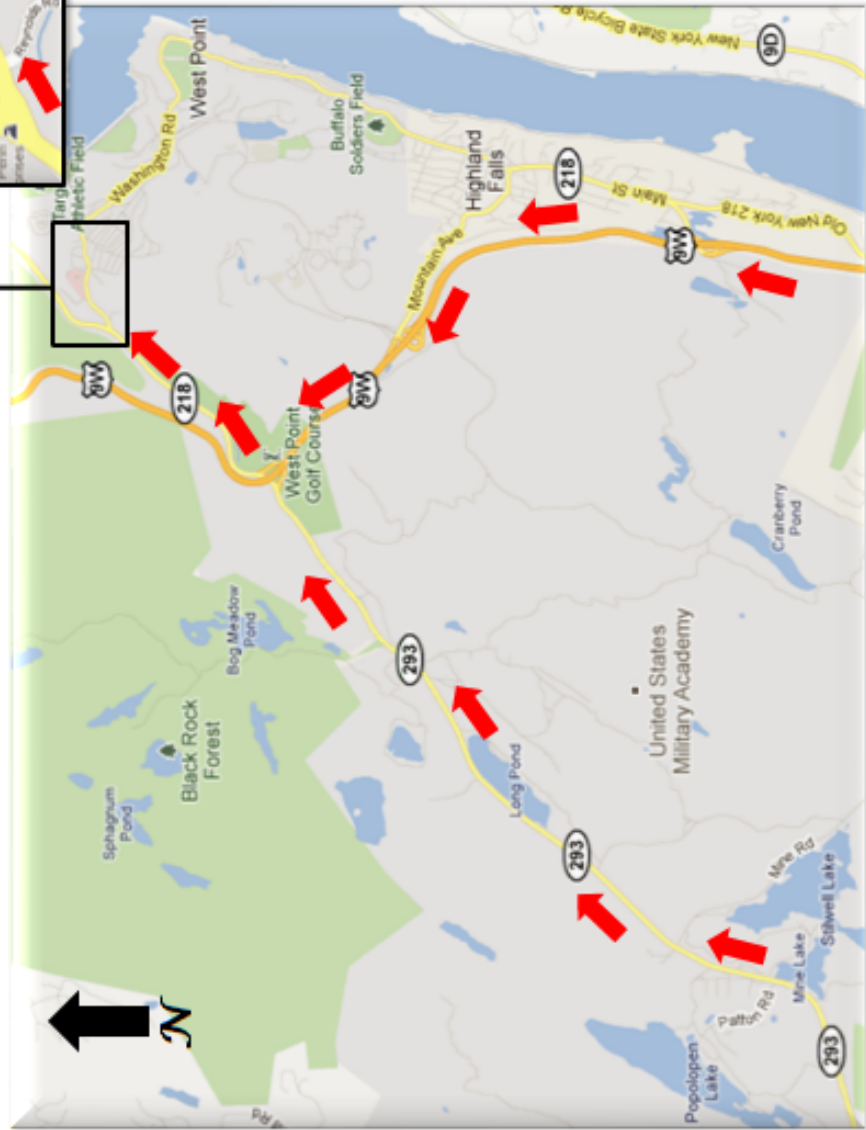
THIS PAGE INTENTIONALLY
LEFT BLANK

10. Reference Information, Reports & Forms

INDEX

TAB	NAME
10A	Local Strip Map to Keller Army Community Hospital
10B	Local Strip Map to Saint Luke's Cornwall Community Hospital
10C	Open

**LOCAL STRIP MAP TO
KELLER ARMY COMMUNITY HOSPITAL
Phone #: (845) 938-4004**

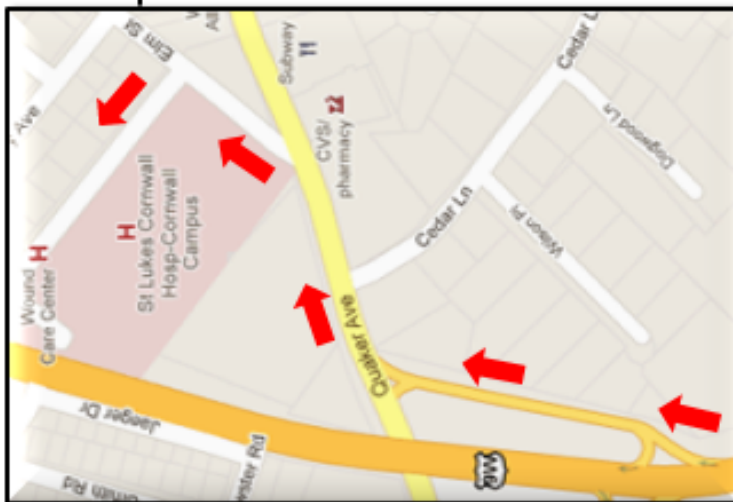
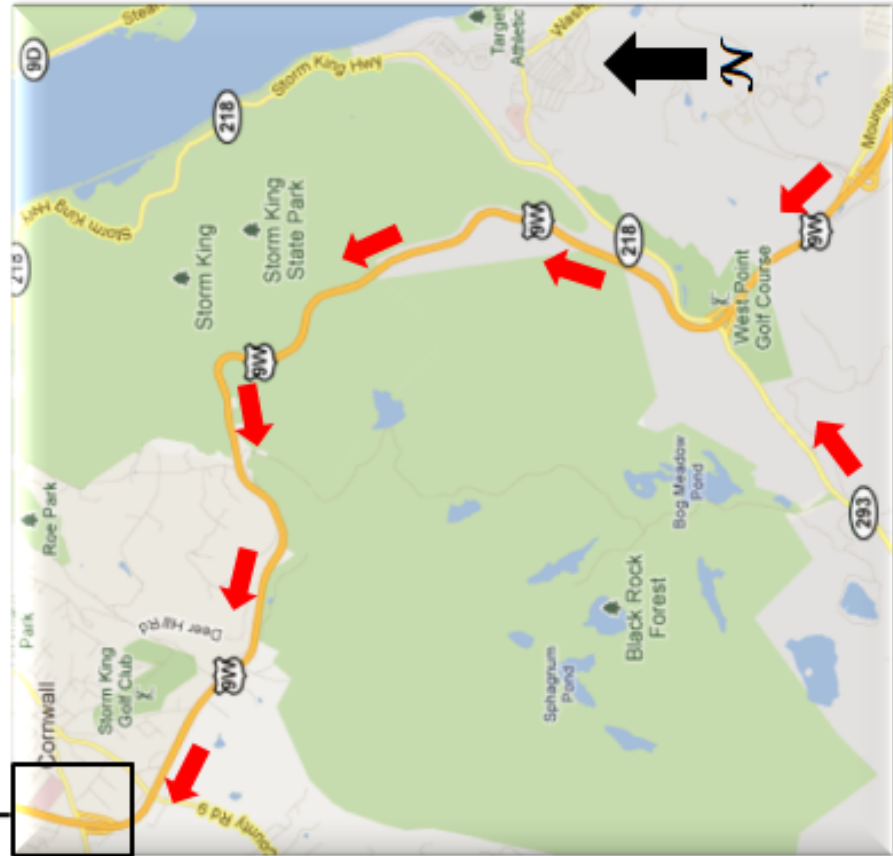


DIRECTIONS

- North on Route 293 or 9W.
- Exit onto Route 218 N (approx. 1.2 miles to Washington Road Gate).
- Enter Installation via Washington Road Gate.
- Keller Army Community Hospital is on the left (approx. 3/10 miles from Washington Road Gate).

Tab 10A – Strip Map – Keller Army Community Hospital

**LOCAL STRIP MAP TO
ST. LUKES WOUND CARE CENTER
&
ST. LUKES CORNWALL HOSPITAL
Phone #: (845) 458-4512**



DIRECTIONS

- North on Route 293 or 9W.
- Continue North on 9W to Cornwall.
- Exit 9W onto Quaker Ave exit.
- Turn left onto Elm Street.

Tab 10B – Strip Map to St. Luke’s Cornwall Hospital