



# U. S. Army Garrison West Point



## Range and Specialty Course Information Book

Created by: USMA Department of Military Instruction (DMI) with  
support from the West Point Range Operations

Updated: April 2020 (Version 10)

Range Specialist (Safety): William Lake  
William.j.lake.civ@mail.mil  
(Phone: 845-938-8561)



# Table of Contents



## General Information

Phone numbers .....	1
Frequencies .....	1
Environmental Information .....	2
West Point Map .....	4
No-fly zone .....	5
Fire hazard matrix .....	6
OIC/RSO Responsibilities .....	7

## Range Information

Range 1 .....	8
Range 1A .....	9
Range 2 .....	11
Range 3 .....	13
Range 4 .....	16
Range 5 .....	21
Range 6 (Inactive) .....	31
Range 7 .....	32
Range 8 .....	40
Range 9 (FBI Range) .....	46
Range 10 .....	49
Range 11 .....	50
Range 11A .....	53
Range 11B .....	58
Range 12 .....	63
Range 13 .....	65
Observation Point .....	71
Range 14 (Inactive) .....	72
Range 15 .....	73
Range 16 .....	75
Range 17 .....	76

<b>SDZ Conflict Matrices .....</b>	<b>80</b>
<b>Medic Requirement Matrix .....</b>	<b>84</b>
<b>Rank Requirement Matrix .....</b>	<b>86</b>

## Specialty Courses

Anzio Obstacle Course .....	87
Appomattox Combative Pit .....	91
Helo Landing Zones (HLZ) .....	92
Lundy's Lane LRC .....	93
Maddock Drop Zone .....	107
Marne Confidence Course .....	108
NBC Site .....	116
Pine Ridge Rappel Site .....	118
South Dock Rappel Tower .....	119
Sapper Isle Demolition Site ....	120
Water Confidence Course .....	121

<b>Engagement Skills Trainer .....</b>	<b>124</b>
<b>Sand Sump Example .....</b>	<b>125</b>



# General Information



**This booklet is for information purposes only! Units will adhere to all applicable AR's, DA PAMS, and Garrison regulations while training at West Point, NY.**

## Phone Numbers:

Range Operations Fire Desk	(845) 938-3930
Range Operations Scheduling:	(845) 938-8556
Range Operations Safety Office:	(845) 938-8561
ITAM Office:	(845) 938-5939
Natural Resource Manager:	(845) 938-7122
<b>Fire &amp; Emergency Services:</b>	<b>(845) 938-5197*</b>
<b>Military Police</b>	<b>(845) 938-3333*</b>
ASP (Ammunition Supply Point):	(845) 938-3216/2914
DPTMS:	(845) 938-8858
Keller Army Community Hospital:	(845) 938-4004
After Duty Hours:	(845) 938-4004/5169
	USMA DSN is 688

**\*During normal duty hours notify Range Operations - Bldg 1403, Route 293**

## Frequencies:

VHF: Air 126.20  
MACOM: LiveFire

## Range Tower Phone Numbers:

Range 1:	(845) 938-2464
Range 2:	(845) 938-3222
Range 3:	(845) 938-6322
Range 4:	(845) 938-3737
Range 5:	(845) 938-6036
Range 7:	(845) 938-6038
Range 8:	(845) 938-2861
Range 9:	(845) 938-6037
Range 11:	(845) 938-4243
Range 14:	(845) 938-1042



# General Information



## Environmental Information

*For further information, please contact the ITAM office (845-938-5939).*

### 1. Field fortifications

Construction of temporary field fortifications is permissible with the *prior approval* of Range Operations. Users are required to remove all materials and fill diggings prior to clearance. Living trees or plants will not be cut to aid in the construction of these fortifications.

Construction of field fortifications, or any other training activity, should not involve the disturbance of cultural resources of potential historic value. Such resources include building foundations, cellar holes, stone fences, mine excavations, wells, and cisterns.

### 2. Tree and foliage cutting

The cutting of trees and/or foliage is prohibited except when authorization has been obtained through the ITAM office (845-938-5939). The cutting of all trees, to include small saplings, must be controlled to assure adequate species are preserved to form the future training area forest. The cutting of tree branches for camouflage or other purposes is prohibited to assure the good health of the trees.

### 3. Protected growth areas

Protection and management of natural resources in the training area involves the establishment of individual tree seedling shelters and deer browsing study plots which must not be disturbed. The tree shelters are 5 foot tall white or brown cylinders, and the study plots are small (generally 3' diameter or 12' x 12') fenced areas.

Occasionally a "woods road" off the main training area access road system has to be temporarily closed for rehabilitation. Signs restricting access to these roads apply to all activities, including training. Often the "roads" have been seeded and mulched and should not be disturbed. If use of such an area is deemed critical to the mission, coordination should be made with the ITAM office (845-938-5939).



# General Information



## Environmental Information

### 4. Wildlife

The trapping or killing of wild animals is prohibited except when authorization has been obtained from the Wildlife Biologist, Natural Resources Branch, DPW.

Rattlesnakes at West Point are officially listed as "Threatened" species by New York State. Harassing, harming, or handling of rattlesnakes is strictly prohibited for the protection of the snake and humans. Violation of this is considered a felony. Rattlesnake sightings should be reported to the Wildlife Biologist at 845-938-3857 or the ITAM office (845-938-5939).

Disturbance of wildlife habitats and structures, such as beaver dams or bird nests, is also prohibited.

### 5. Fuel

Refueling of vehicles, equipment, and aircraft is prohibited in the training area complex. Exceptions are Camp Natural Bridge, Camp Buckner, Lake Frederick, and the Area K loading dock area. The West Point DPW Environmental Office will review refueling procedures and certify them prior to dispensing of fuels.

Fuel trucks and tankers may not be parked within 200 meters of lakes, ponds, streams, rivers, etc.

**A fuel spill of any kind, no matter the size, must be reported to the West Point Fire & Emergency Services (845-938-3001 or 845-938-3151 or MPs at 845-938-3333).**

***For further information about environmental issues at West Point, please contact the ITAM office (845-938-5939) or the Natural Resources Branch (845-938-3857).***





# West Point Installation

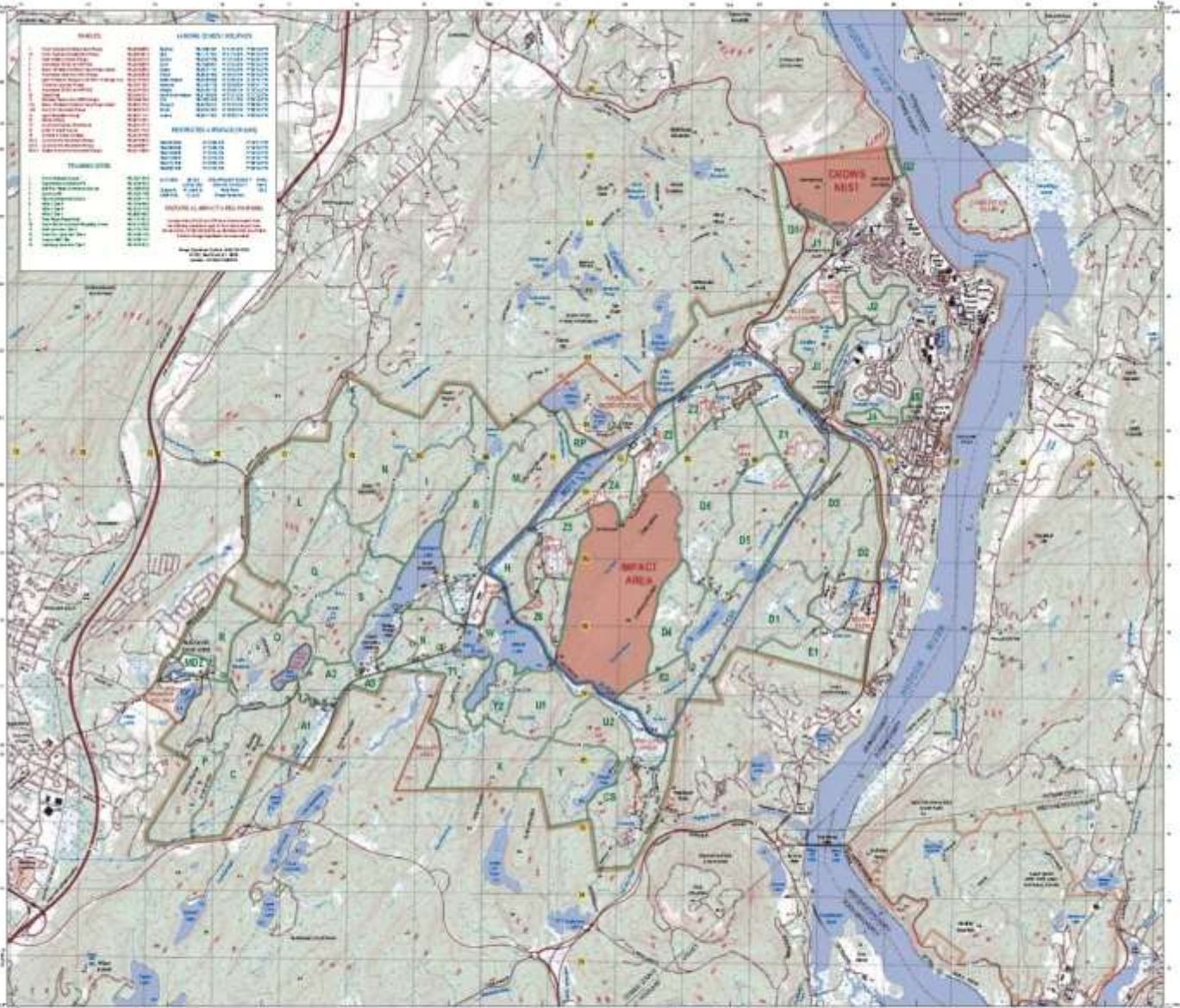


NEW YORK 1:25,000

W0584

WEST POINT & VICINITY MILITARY INSTALLATION MAP

1:25,000 1:50,000 1:100,000 1:250,000



LEGEND

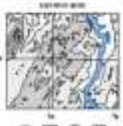
SYMBOL	DESCRIPTION
[Symbol]	Administrative boundary
[Symbol]	Political boundary
[Symbol]	Waterway
[Symbol]	Highway
[Symbol]	Railroad
[Symbol]	Power line
[Symbol]	Communication line
[Symbol]	Other

MILITARY LEGEND

SYMBOL	DESCRIPTION
[Symbol]	Fortification
[Symbol]	Obstacle
[Symbol]	Other



SYMBOL	DESCRIPTION
[Symbol]	Fortification
[Symbol]	Obstacle
[Symbol]	Other



WEST POINT & VICINITY MILITARY INSTALLATION MAP W0584 EDITION 3.0BP

W0584

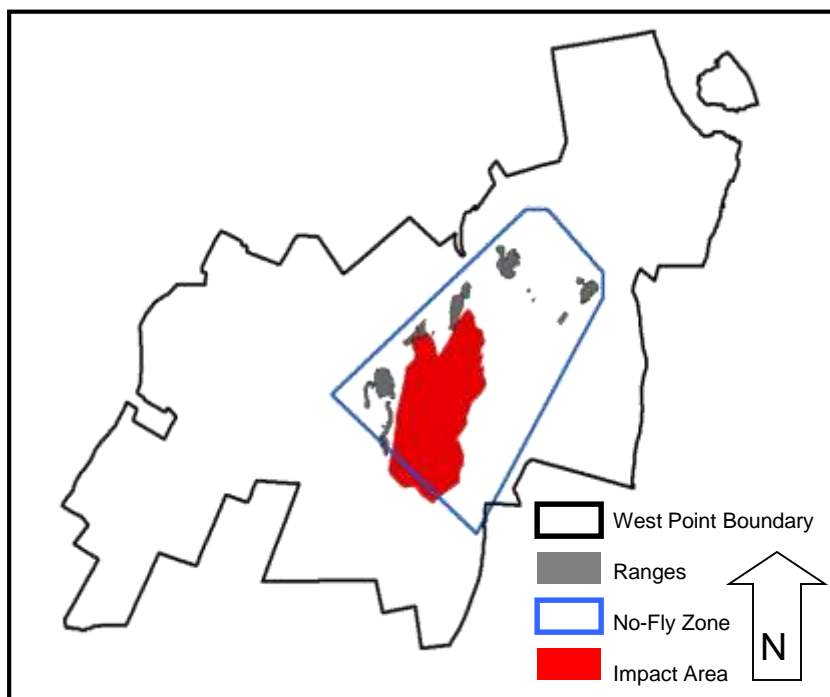


# General Information



## No-Fly Zone

The area described below has been designated as a joint use restricted area, R-5206, during designated periods of the year by the Federal Aviation Administration (FAA). An airspace restriction has been designated up to 5000 feet mean sea level (MSL) in order to allow for high angle fire between 1 July and 31 August. This airspace restriction can be activated at any other time during the year upon 48 hours notification to the FAA by notice to airmen (NOTAM) sent by Range Operations.



- For non high-angle fire, the area has been designated as a Controlled Firing Area (CFA) in which ordnance firing is conducted under conditions controlled by the using agency. As a part of this responsibility, the using agency must ensure that firing will cease when aircraft traverse the controlled area. OIC's and RSO's of live-fire ranges will ensure compliance with applicable safety procedures stipulated by the FAA in the agreement that established the area. These safety procedures will include some or all of the safety measures outlined in AR 385-63 para 2-2e(1-8).
- For specific details pertaining to the no-fly zone, please see West Point Reg. 350-11



# General Information



## FIRE PREVENTION CONTROL MATRIX

(Current as of Summer 2012)

Action	Green	Blue	Yellow	Orange	Red
CLV	Class 1	Class 2	Class 3	Class 4	Class 5
Blank Ammunition	U	U	U	C	C
Simulators/ Smoke Grenades *	U	U	X*	X*	X
Artillery/ Mortars/ Demolitions/ AT- 4s/ 40mm HEDP	U	U	C	C	X
Tracer Ammunition	U	U	C	X	X
Star Clusters/ Parachute Flares/ Traps & Trip Flares	X	X	X	X	X

U = Unrestricted use during listed action. Exercise caution when executing listed action.

C = Exercise caution when executing listed action. Detonate pyrotechnics on non-vegetated flat surfaces such as unoccupied range roads. Self-impose and initiate higher level restrictions if fire hazards increase.

X = Listed actions are banned.

\* = These pyrotechnics can be cleared for the use if ignited and extinguished in controlled sand sumps. These must be inspected by the Fire Chief prior to use. The sand sump will be constructed utilizing sand bags. See back cover for example.





# OIC/RSO Responsibilities



The assigned OIC and RSO will ensure:

1. All agreements with Range Operations regarding training will be honored.
2. No occupation of any range or training area occurs without Range Operations notification and approval.
3. A completed and accurate Risk Management Worksheet is present at Range Operations prior to occupation/training.
4. Prerequisite: Non-standard live fire training must include a pre-approved scenario, concept sketch and Risk Management Worksheet.
5. Understanding and strictly comply with the safety requirements of applicable SDZ waivers.
6. The range flag is flying and/red light of flagpole is on during night training.
7. Range and SDZ gate guards are properly instructed and in place with commo prior to live (mobile/cellular devices are not an approved means of communication).
8. Guards will not deny access to any Range Operations or Emergency personnel.
9. Personnel are in the proper uniform IAW West Point Reg 350-11.
10. Safety briefings are conducted for all personnel prior to training.
11. Range limit markers are known to all personnel and no firing is permitted outside of markers.
12. Appropriate medical support, equipment and CASEVAC vehicle are on site.
13. Medical support personnel will have no other duties other than to provide medical support.
14. Only POVs with approved Range Operations POV passes are allowed on the range.
15. Communications is established with Range Operations, the range radio is monitored at all times and hourly radio checks are completed at the top of each hour.
16. OIC's place of duty is in the tower or other command and control location while range is hot.
17. RSO's place of duty is on the firing line when the range is hot.
18. Immediate "Cease Fire" is called for: Any injury, major weapons malfunction, negligent discharge, personnel, animal, vehicle or aircraft down range, fire on the range, or observation of inclement weather. **ONLY RANGE OPERATIONS CAN LIFT A CEASE FIRE.**
19. All listed conditions in line 18 will be immediately reported to Range Operations with the 5 W's. (Who, What, When, Where, Why)
20. A change of OIC/RSO must be **immediately requested** through Range Operations.
21. Range Operations equipment, facilities and grounds will not be altered (painted, moved, modified, etc.) by unit personnel.
22. Personnel will not operate vehicles on grass areas without prior approval from Range Operations. All damage done to grassy areas are the responsibility of the OIC.
23. Range Operations is notified of the completion of training and a cold time is requested. A closing report, containing the number of personnel trained and ammunition expended is provided to Range Operations via Range Operations radio.
24. The range is policed or all brass, dunnage, trash and any material brought by the using unit. Firing lines are raked, targets holder removed from target frames and frames restored to their previous position. Damage target frames are reported to Range Operations.
25. All facilities used (classrooms, towers, latrines) and equipment is cleaned and returned to issue condition.
26. The range is cleared IAW the Range Clearance Inspection Checklist prior to contacting Range Operations for a Range Inspector to clear the range/training area.
27. All equipment signed out from Range Operations and necessary forms are provided to Range Operations prior to departing the training complex.



# Range 1: Argonne

## Hand Grenade Familiarization



Range 1 is a hand grenade familiarization range designed to introduce trainees to deployment of hand grenades.

**Location:** Range 1 is located at WL84838063. By road, this range is accessed from Range Road 1, off of Route 9W, south of Highway 218. Keys are needed to gain entry to this range.

**Authorized Weapons and Ammunition:** Fragmentation hand grenades M67 and practice hand grenades.

**Facilities:** Facilities have bleachers, no mess area, only portable latrines.

**Range Guard:** A range guard will be posted at the entrance to the range area.

**Vehicles:** The authorized parking area is by the access road at WL85018065. Vehicles are not permitted within the surface danger area when throwing of live hand grenades is in progress.

### Special Instructions:

1. Personal protective equipment (PPE) will be worn by all personnel within the surface danger zone.
  2. Gloves or ponchos will not be worn during live practice hand grenade throwing.
  3. Vehicles will not be permitted within the Surface Danger Zone (SDZ) when throwing of live hand grenades.
  4. Vehicles will not be permitted within the Surface Danger Zone (SDZ) when throwing of live hand grenades.
- Live grenades will not be used in the throwing bay areas.
5. If a live hand grenade fails to detonate,

**Special Instructions (cont):** training with live grenades will cease in that bay and Range Operations will be notified immediately for alert of EOD.

**Firing Points:** 4 concrete bays / 4 practice bays

**Range Flag:** Located at the range entrance off of route 9W.

**Targets:** E & F type silhouettes and rubberized tire enclosed targets.

**Safety Area:** 150m radius of throwing area.

**Danger Area:** Z1

**Telephone:** 845-938-2464, located inside the tower.





# Range 1A: Argonne

## Hand Grenade Qualification



Range 1A is a hand grenade qualification course, consisting of two sets of distance and accuracy stations, and two distance and accuracy courses.

**Location:** Range 1A is located at WL8471980834. By road, this range is accessed from Range Road 1, off of Route 9W, south of Highway 218. Keys are needed to gain entry to this range.

**Authorized Weapons and Ammunition:** M69 practice hand grenades and M228 practice fuses.

**Facilities:** Facilities have bleachers, no mess area, only portable latrines.

**Range Guard:** A range guard will be posted at the entrance to the range area (WL85028068) along range road 1.

**Vehicles:** The authorized parking area is by the access road at WL85018065. Vehicles are not permitted within the surface danger area when throwing of live hand grenades is in progress.

### Special Instructions:

1. Personal protective equipment (PPE) will be worn by all personnel within the surface danger area.
2. Gloves or ponchos will not be worn while conducting a hand grenade throw.
3. Vehicles will not be permitted within the Surface Danger Zone (SDZ) when throwing of live hand grenades.
4. EOD and Range Safety must clear the strike zone before dunnage can be retrieved.

**Firing Points:** Two distance and accuracy lands, consisting of 4 stations. Two distance and accuracy courses, consisting of 9 stations.

**Range Flag:** Located at the range entrance off of route 9W.

**Targets:** Various

**Safety Area:** 10m radius of throwing area.

**Danger Area:** Z1

**Telephone:** A telephone is located within the CP.







# Range 2: Buena Vista

## Field Artillery



Range 2 consists of four firing points and an adjacent RSOP practice area.

**Location:** Range 2 is located at WL83428129. This Range can be accessed from HWY 293 via the ASP entrance. A key is needed to access this range.

**Authorized Weapons and Ammunition:**

1. 105mm Howitzer: Max Charge 2; HE, HC, Fuses: PD
2. 81mm and 4.2 inch Mortars: Mortar HE, Practice and training with PD or VT fuses.

**Facilities:** Bleachers & mess area are available. Latrines are not available.

**Range Guard:** Four guards are required during live-fire training. The guard shack is located at WL83348129, 100m down the road. Mine Torne Rd requires two gate guards with communications.

**Vehicles:** Military parking is available across the road from the firing points. POV parking is located in an open area at the base of the hill, close to the location of the sharp bend in range road 29 (WL83338170).

**Special Instructions:** Mine Torne Rd and Stillwell Lake must remain closed during live fire. See West Point Reg. 350-11 for more information.

**Firing Points:** 4, see map

**Range Flag:** Located at the entrance to firing positions

**Targets:** Armored vehicle hulls

**Danger Area:** Z2, Z6, E2, OP McNair, Mine Torne Road

**Telephone:** 845-938-3222







# Range 3

## Combat Pistol Qualification Course



Range 3 is a Combat Pistol Qualification Course consisting of seven lanes.



**Location:** Range 3 is located at WL82598085. This Range can be accessed from Range 4. A key is needed to access this range.

**Authorized Weapons and Ammunition:**  
9mm Pistol

**Facilities:** Bleachers & Ammo point are available. Porta-potties are available on a full time basis.

**Range Guard:** Units firing from this range will post guards at the range shack (WL82438074).

**Vehicles:** Parking for military vehicles is in the lot between ranges 4 and 5 (WL82448079). The authorized parking for privately owned vehicles is located outside of the Range Gate.

**Special Instructions:** See West Point Reg. 350-11 for more information.

**Firing Points:** 7, see map

**Range Flag:** Located along Route 293 at the base of the range road.

**Targets:** 49 E, F, & 3D type silhouettes at 12-38 meters

**Safety Area:** Right and left limits are posted downrange

**Danger Area:** Z1, Z2, Z3, D5, D6

**Telephone:** 845-938-6322 in maintenance building





# Range 4 / 4A: Inchon

## 25m Zeroing Range



Range 4 and 4A are 25-meter zeroing ranges. Range 4A has 32 firing points and Range 4 has 60 firing points.



**Location:** This Range is located at WL82508065, adjacent to Range 5. It is accessible from HWY 293 across from Range Operations, with a key.

**Authorized Weapons and Ammunition:**  
*Weapons:* M4/M16, Pistol, Shotgun. No automatic fire permitted.

**Ammunition:** Standard ball (M855 and M855A1); tracer firing is prohibited during periods of increased danger of fire. See general information for details about fire danger. All ammo must be verified prior to firing.

**Vehicles:** The authorized parking for military vehicles is the lot between ranges 4 and 5 (WL82448079). POV parking is located outside of the Range Gate.

**Facilities:** Covered bleachers, mess area behind the bleachers on Range 5. Portable latrines are available.

**Range Guard:** Units firing from this range will post guards at the range shack (WL82438074).

**Special Instructions:** Ranges may be used as separate ranges or one continuous range. See West Point Reg. 350-11 for more information.

**Firing Points:** Range 4A (32); Range 4 (60)

**Range Flag:** Located along Route 293 at the base of the range road.

**Targets:** Zero target frames at 25m. 39 mounted E-type silhouettes at 50m for night.

**Safety Area:** Right and left limits are posted downrange.

**Danger Area:** D1, D2, D3, D4, D5, D6, Z2, Z3

**Telephone:** 845-938-3757, located on range tower.







# Range 5: Gettysburg

## Automated Field Fire



Range 5 is an Automated Field Fire (AFF) range. This range consists of 16 lanes of AFF and 8 lanes for M249.M240B Familiarization Fire (200m, 300m and 400m).

**NOTE: Machine guns (M240B-7.62mm) is authorized for Cadet Fam Fire only under CST waiver. No other units may fire 7.62mm.**

**Location:** This Range is located at WL82388052, adjacent to Range 4 and is accessible from HWY 293 across from Range Operations. A key is necessary to access this range.

**Authorized Weapons and Ammunition:** EPR ammo is authorized for use on this range with restrictions. Bipod and/or Traversing and Elevation (T&E) mechanism firing is authorized from the prone position only. Tracer firing is prohibited during periods of increased danger of fire.

**Facilities:** Covered bleachers, mess area behind the bleachers. Portable latrines are available.

**Range Guard:**  
A guard will be posted at the gate.

**Special Instructions:** See West Point Reg. 350-11 for more information.

**Vehicles:** Parking for military vehicles is in the lot between ranges 4 and 5 (WL82448079). The authorized parking for privately owned vehicles is located outside of the Range Gate. See Range 4 map for more details.

**Range Flag:** Located in the vicinity of Route 293 at the base of the range road.

**Targets:** AFF: E type silhouettes on lifting mechanisms; MG: E-type silhouettes

**Safety Area:** Right and left limits are posted downrange.

**Danger Area:** Z3, OP McNair

**Telephone:** 845-938-6036, located on range tower.





# Range 7: Saratoga

## Anti-tank (AT-4) & ARM



Range 7 is used for anti-tank weapons and has been expanded to support a 5.56mm zero range with ALT-C. Range 7 is able to facilitate the Basic Rifle Marksmanship (BRM) and Advance Rifle Marksmanship (ARM) out to 50m

**Location:** This Range is part of the 7-10 Complex and is located at WL81708000. It is accessible from HWY 293 directly across from Range Operations. A key is needed to access this range.

### Authorized Weapons and Ammunition:

Weapons: M4/M16 (or lesser), M136 (AT-4), MAAWS (84mm).

**Ammunition:** All M72 and M67 ammunition; restrictions using MAAWS HE; 5.56mm M855 and M855A1. When M855A1 is in use, Range 8 may not be utilized.

**Facilities:** Bleachers, mess area on Range 8 behind near operational building, one latrine as shown on map.

**Range Guard:** The guard shack is located at WL81758009.

**Vehicles:** Military Parking is available behind Range 8 and between Range 7 and 8 (WL81688001). There is no POV parking available on this Range.

**Special Instructions:** See West Point Reg. 350-11 for more information.

**Firing Points:** 2 points for AT-4 HE, 16 points for AT-4 practice rounds, and 32 points for shooters on 5.56mm range.

**Range Flag:** Located adjacent to Route 293.

**Targets:** Vehicle hulls in the impact area

**Safety Area:** Right and left limits are indicated by panel markers posted downrange.

**Danger Area:** Z4, D4, E2, OP McNair

**Telephone:** 845-938-6038, located in tower.







# Range 8: Richmond

## M203 & BRM



Range 8 is used for M203.M320 Grenade launchers and has been expanded to support Basic Rifle Marksmanship (BRM) utilizing Zero and ALT-C targets.

**Location:** This Range is part of the 7-10 Complex and is located at WL81597986 . It is accessible from HWY 293 directly across from Range Operations. A key is needed to access this range.

### Authorized Weapons and Ammunition:

**Weapons:** 40mm grenade launcher, M203, and M4/M16 DODICs.

**Ammunition:** 40mm HE, HEDP, & TP rounds only. 5.56mm M855 and M855A1. Range 7 may not be utilized when M855A1 is in use.

**Facilities:** Covered bleachers, mess area near operational building

**Range Guard:** Guard shack is located at WL81758009.

**Vehicles:** Military Parking is available behind Range 8 and between Range 7 and 8 (WL81688001). There is no POV parking available on this Range.

### Special Instructions:

1. A minimum distance of 130m-HE/165m-HEDP will be maintained between the impact area and the firing line when firing the grenade launcher.
2. Firing will be suspended when ground winds are in excess of 30 mph
3. All personnel are prohibited from the impact area.

See West Point Reg. 350-11 for more information.

**Firing Points:** 11 points

**Range Flag:** Located adjacent to Route 293.

**Targets:** Vehicle hulls in the impact area

**Safety Area:** Right and left limits are indicated by panel markers posted downrange.

**Danger Area:** Z4, D4, E2, OP McNair

**Telephone:** 845-938-2861, located on pole next to tower.





# Range 9: Stony Point

## Pistol



Range 9 is a Steel-Target Pistol Range used to support a variety of cadet firearm clubs, and serves as the resident FBI field office marksmanship range. This range complex has a splash back safety zone of 25yds.

**Location:** This Range is part of the 7-10 Complex and is located at WL81547982. It is accessible from HWY 293 directly across from Range Operations. A key is needed to access this range.

### Authorized Weapons and Ammunition:

**Weapons:** Handguns, 9mm, .45, .38 caliber pistols are authorized. No automatic firing will take place on this range.

**Ammunition:** Hollow point and frangible ammunition is preferred due to splash-back hazards.

**Range Guard:** Guard shack is located at WL81758009.

**Vehicles:** Military Parking is available behind Range 8 and between Range 7 and 8 (WL81688001). There is no POV parking available on this Range.

**Special Instructions:** Using military units must be trained on the target system by Range Operations prior to use of this facility. Law enforcement agencies will contact the FBI's West Point field office to receive training on the system. The FBI must approve and be present for all training before use.

**Firing Points:** This facility can support up to 30 firers using paper targets and 10 using steel targets.

**Range Flag:** Located adjacent to Route 293.

**Targets:** Blackwater Bear Target System. The target system is located at a distance of 50 yards from the firing line. Minimum safe distance is 25yds.

**Safety Area:** Right and left limits are indicated by panel markers posted downrange.

**Danger Area:** Z4, OP McNair

**Telephone:** 845-938-6037







# Range 10: Bastogne

## Skeet & Trap



The USMA Skeet and Trap Range is for the West Point Skeet & Trap Team. This range is also used for competitive collegiate shotgun shooting events associated with the West Point Skeet & Trap team.

**Location:** This Range is part of the 7-10 Complex and is located at WL81477980. It is accessible from HWY 293 directly across from Range Operations. A key is needed to access this range.

**Authorized Weapons and Ammunition:**  
Weapons: .410 to 12 gauge shotguns only

**Ammunition:** Light target load, #7.5 to #9.

**Range Guard:** Guard shack is located at WL81758009.

**Vehicles:** Military Parking is available behind Range 8 and between Range 7 and 8 (WL81688001). There is no POV parking available on this Range.

**Special Instructions:** A maximum of 15 shooters may use this range at any one time. See West Point Reg. 350-11 for more information.

**Firing Points:** At designated regulation skeet and trap stations only.

**Range Flag:** Located adjacent to Route 293.

**Targets:** Clay or paper shooting targets only.

**Safety Area:** Right and left limits are indicated by panel markers posted downrange.

**Danger Area:** Z4, OP McNair

**Telephone:** 845-938-7039 or 845-938-6208



CANNOT BE  
RESERVED



# Range 11: Normandy

## Modified Record Fire



Range 11 is a 16 lane modified record fire range – TC 3-20.40 compliant. This range is computer-operated and operates with four program (scenarios): M-16 record fire (qualification), NBC, Night Qualification and familiarization.

**Location:** This Range is located at WL80887901 and is accessible from HWY 293 between Mine Torne Road and Long Pond. A key is necessary to use this range.

**Authorized Weapons and Ammunition:** Weapons firing standard 5.56mm (M855 and M855A1). 4 Lanes are available for SAW TC 3-20.40 qualification.

**Range Guard:** The guard shack is located at WL80697941.

**Vehicles:** Authorized military parking is behind the range tower. POV parking is just inside the gate (WL80687943). Vehicles are not permitted past the range tower when Range 12 is operational.

**Special Instructions:** See West Point Reg. 350-11 for more information.

**Firing Points:** 16 points, see map

**Range Flag:** Located at range gate off of Hwy 293.

**Targets:** qualification targets from 50meters to 300 meters.

**Safety Area:** Right and left limits are posted downrange.

**Danger Area:** D1, D3, D4, D5, D6, Z1, Z4, Z5

**Telephone:** 845-938-4243, located in tower and ammo building.







# Range 11A: Normandy

## Zero



Range 11A is a 24 lane 25meter 5.56mm zero facility that can support ALT-C qualification. This range can be utilized simultaneously with Range 11 firing. A RSO must be present on each ranges firing line. Pistol can also be supported on this range.

**Location:** This Range is located at WL80887901 and is accessible from HWY 293 between Mine Torne Road and Long Pond. A key is necessary to use this range.

**Authorized Weapons and Ammunition:** Weapons firing standard 5.56mm (M855 and M855A1). Only semi-automatic fire is authorized. *Ammunition:* Standard ball and EPR is authorized.

**Range Guard:** The guard shack is located at WL80697941.

**Vehicles:** Authorized military parking is behind the range tower. POV parking is just inside the gate (WL80687943). Vehicles are not permitted past the range tower when Range 12 is operational.

**Special Instructions:** Units must bring their own steel targets if required. Steel targets are for pistol only. See West Point Reg. 350-11 for more information

**Firing Points:** 16 points

**Range Flag:** Located at range gate off of Hwy 293.

**Targets:** 25 meter zero targets.

**Safety Area:** Right and left limits are posted downrange.

**Danger Area:** D1, D3, D4, D5, D6, Z1, Z4, Z5

**Telephone:** 845-938-4243, located in tower and ammo building.





# Range 11B: Normandy

## Long Range Marksmanship



Range 11B is primarily a long range marksmanship range that can be used to fire from 25 meters to 200 meters. It can also be used to zero and fire at static and steel targets. The maximum number of firers is 50 personnel. This range can't be used in conjunction with adjacent ranges.

**Location:** This Range is located at WL80887901 and is accessible from HWY 293 between Mine Torne Road and Long Pond. A key is necessary to use this range.

**Authorized Weapons and Ammunition:** Weapons firing standard 5.56mm (M855 and M855A1). Only semi-automatic fire is authorized. *Ammunition:* Standard ball

**Range Guard:** The guard shack is located at WL80697941.

**Vehicles:** Authorized military parking is behind the range tower. POV parking is just inside the gate (WL80687943). Vehicles are not permitted past the range tower when Range 12 is operational.

**Special Instructions:** Units must bring their own steel targets if required. Steel targets are for pistol only. See West Point Reg. 350-11 for more information.

**Firing Points:** 50 points, see map

**Range Flag:** Located at range gate off of Hwy 293.

**Targets:** Zero, Static, and Steel targets up to 200 meters.

**Safety Area:** Right and left limits are posted downrange.

**Danger Area:** D1, D3, D4, D5, D6, Z1, Z4, Z5

**Telephone:** 845-938-4243, located in tower and ammo building.







# Range 12: Basra

## Demolition Site



Range 12 is a demolition and claymore range.

**Location:** This Range is located at WL81067830 and is accessible from Range 11 and Mine Torne Road, across from Lake Stilwell. A key is necessary to access this range.

**Authorized Weapons and Ammunition:**

*Weapons:* TNT, dynamite, blasting caps, detonation cord, C-4, shape charges, Claymores, and Bangalore Torpedoes is authorized in the designated firing pits.

*Ammunition:* Total combined charge may not exceed 16 pounds.

**Facilities:** Facilities have no bleachers, the mess area is to the right of the range tower, and portable latrines are available.

**Range Guard:** This range uses two guards when in use; one guard will be located at the Range 11 chain gate and one guard will be located at Gate 66 at the intersection of Range Road 26 and Mine Torne Rd.

**Vehicles:** The designated parking area for military vehicles is on the road leading into the range from Mine Torne Road. Privately owned vehicles (POVs) should be parked on Mine Torne Road below Stilwell Dam.

**Special Instructions:** See West Point Reg. 350-11 for more information.

**Firing Points:** All weapons must be located within 25 meters of WL81067830.

**Range Flag:** Located next to the gate at the entrance to Range 12 on Mine Torne Road.

**Targets:** Vehicle hulls in impact area

**Danger Area:** Training Areas-Z6 and E2. The portion of the range road between Ranges #11 and #12.

**Telephone:** 845-938-4356, located in tower.





# Range 13: Pork Chop Hill

## Mortar Range



Range 13 is a Mortar Range consisting of 4 Mortar Firing Point's with a 81mm capability and below. This Range includes multiple positions for forward observer training and a CLV point.

**Location:** This Range is located at WL 80707875, adjacent to Range 11. It is accessible from HWY 293 Range 11 entrance.

**Authorized Weapons:** 120mm, 81mm, & 60mm mortar.

**Ammunition:** High Explosive (HE), Practice & Training PD/VT fuses for 60mm, 81mm, & 120mm Mortar.

**Facilities:** Range 13 is accessible only by tactical vehicle due to the steep terrain surrounding the MFP's. This facility has bleachers, admin area, CLV point and F.O. positions.

**Range Guard:** Located at base of hill (Range 11 entrance).

**Vehicles:** POV parking is located at the Range 11 entrance.

### Special Instructions:

Use of 120mm closes Mine Torne Road and Stillwell Lake. This closure must be coordinated through Range Operations and the MWR.

See West Point Reg. 350-11 for more information.

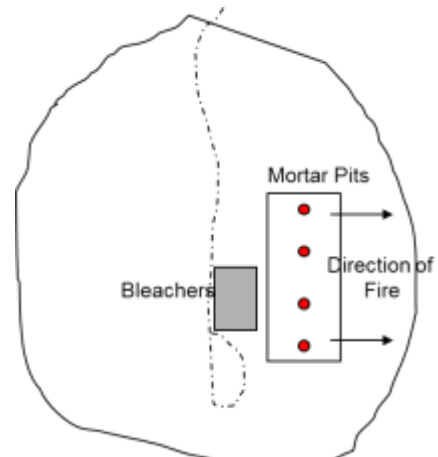
**Firing Points:** 4

**Range Flag:** Located at entrance to Range 11 Hwy 293.

**Targets:** Hardened targets (P.C.'s & Tanks) are located in the impact area.

**Danger Area:** Z6

**Telephone:** N/A







# Observation Point



Observation Post #2 is utilized for all indirect fire training within the West Point Training complex. It is located on the road to the mortar firing point.



**Location:** The observation point is location IVO WL 807786, just to the NNW of the MFP. It is accessible from HWY 293 Range 11 entrance.

**Authorized Weapons:** None

**Ammunition:** None

**Facilities:** The point has bleachers and porta-potties.

**Range Guard:** Range Guards are not needed for this location.

**Vehicles:** POV parking is located at the Range 11 entrance.

**Special Instructions:** See West Point Reg. 350-11 for more information.

**Firing Points:** None

**Range Flag:** None needed at this location.

**Targets:** None needed at this location.

**Danger Area:** None

**Telephone:** N/A





# Range 15

## Urban Assault Course



Range 15 (Urban Assault Course) consists of five stations:

Station 1: Individual and Team Trainer

Station 2: Squad and Platoon Trainer

Station 3: Squad and Platoon Trainer

Station 4: Offense/Defense Trainer

Station 5: Underground Trainer.

Additionally there is a Mobile MOUT structure on Station 2.

**Location:** Range 15 (UAC) is located in Training Area CS, vicinity grid WL82207580. The entrance is accessible from Mine Torne Road.

**Authorized Weapons:** The ONLY authorized ammunition types that WILL BE used are SESAMs, UTM, blanks, pyrotechnics (smoke only), and practice hand grenades. **Paintball use is PROHIBITED WITH NO EXCEPTIONS.**

**Range Guard:** Guards will be posted in a 150m perimeter around all firing locations to prevent personnel without PPE from entering the live fire area.

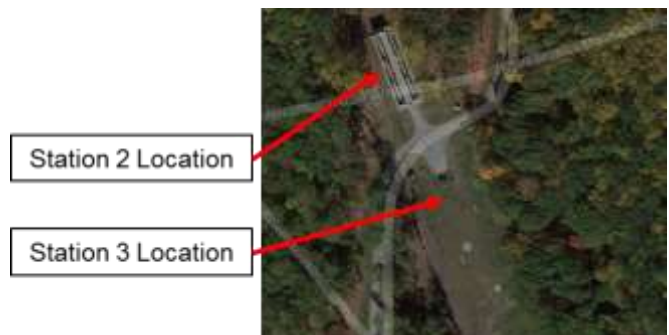
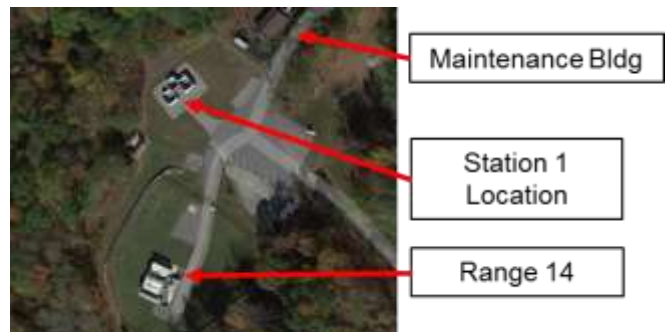
**Vehicles:** POV parking is located adjacent to the range.

**Special Instructions:** **Painting or permanent markings on structures is prohibited.** See West Point Reg. 350-11 for more information.

**Range Flag:** The flag pole is located at the north entrance to Range 15. A red flag will fly during all UTM, Sims, SESAM training.

**Targets:** Human Urban Targets and RF Controlled Stationary Infantry Targets. Targets are installed at request of using units.

**Telephone:** (845) 938-1721







# Range 16

## AACHEN MOUT Site



Range 16 - The Aachen MOUT site consists of eight buildings, one 2-story building and seven 1-story buildings. Each structure is built using masonry and wooden walls and does not possess interior or exterior lighting. The MOUT site is not equipped with any instrumentation for audio, video or automated targetry. The Aachen MOUT site is designed to provide a training area in which units may learn the individual and unit skills needed to fight and defeat an enemy in an urban environment.



**Location:** The Aachen MOUT training site is located in training area CS IVO grid WL82157498.

**Authorized Weapons:** The ONLY authorized ammunition types that WILL BE used are SESAMs, UTM, blanks, pyrotechnics (smoke only), and practice hand grenades. **Paintball use is PROHIBITED WITH NO EXCEPTIONS. PAINTING OR PERMANENT MARKINGS ON STRUCTURES IS PROHIBITED.**

**Range Guard:** Guards will be posted in a 150m perimeter around all firing locations to prevent personnel without PPE from entering the live fire area.

**Vehicles:** POV parking is located adjacent to the range.

### **Special Instructions:**

See West Point Reg. 350-11 for more information.

**Range Flag:** None required.

**Targets:** Various depending on training requirements.







# Range 17

## Live Fire Exercise Ambush Site



The Live Fire Exercise (LFX) range is used to train individual soldiers and buddy/teams on basic fire and movement techniques against stationary targets. Soldiers show their ability to select covered and concealed positions, move while under simulated fire, apply principles of teamwork, and use suppressive fire to defeat enemy soldier stationary targets. The maneuver area of the range is approximately 50-75 meters in width, and approximately 270 meters in depth. There are various firing positions (log walls, berms, depressions) as the team maneuvers down the range. The range also has two wooden building façades as a final objective for emplacement of targets in windows and/or doors.

**Location:** Range 17 is located in Training Area Z1, on Range Road 1 IVO grid WL84408020. It is accessible off of Hwy 9W, south of the 9W and 293 intersections.

**Authorized Weapons and Ammunition:**  
M16/M4 (Legacy and EPR)

**Facilities:** Range 17 range has ammunition issue points for live and blank fire, bleachers, porta-potties and a large assembly area.

**Range Guard:** A range gate guard will be posted at the northern entrance to the parking lot on Range 1. Gate #5 on Range Road 1, will be closed and locked. Gates #6 and #15 on Range Road 2 will be closed and locked.

**Vehicles:** Military Vehicles – Limited to range support vehicles at the rear of the range complex. Civilian Privately Owned Vehicles (POVs) – At the northern entrance of Range 1, parking lot.

**Special Instructions:** Range 17 is a two-man fire and maneuver range that supports individual movement techniques in a live fire environment. The maximum number of personnel is four (4) live shooters. A Live-Fire standardization package (LFSP) IS

**REQUIRED** when using this range. Reference West Point Reg 350-11,

NOTE: LFX 1 does not support the use of crew served weapons or automatic firing. M249 and M240B use is prohibited.





# Medic Requirement Matrix



RANGE/COURSE	WEAPON SYSTEMS	MEDICAL REQUIREMENTS
1	M67 Hand Grenade (Frag)	MOS Qualified Medic/EMT, litter, radio communication, complete medical aid bag and all required CL VIII items, with current expiration dates, dedicated CASEVAC capable of litter transport and current PMCS.
1A	M69 Practice Grenade w/fuze.	Current Certified Combat Life Saver (Any MOS) , litter, radio communication, CLS Aid bag and all required CL VIII items, with current expiration dates, dedicated CASEVAC capable of litter transport and current PMCS.
2	105mm Howitzer, M119, M102	MOS Qualified Medic/EMT, litter, radio communication, complete medical aid bag and all required CL VIII items, with current expiration dates, dedicated CASEVAC capable of litter transport and current PMCS.
3	.22, .38, .40, 45 Cal, 9mm, 10mm Pistol	Current Certified Combat Life Saver (Any MOS) , litter, radio communication, CLS Aid bag and all required CL VIII items, with current expiration dates, dedicated CASEVAC capable of litter transport and current PMCS.
4	9mm, 10mm, .40 Cal and .45 Pistol; 12 Gauge Shotgun, 5.56mm (NO 5.56 SAW MG authorized)	Current Certified Combat Life Saver (Any MOS) , litter, radio communication, CLS Aid bag and all required CL VIII items, with current expiration dates, dedicated CASEVAC capable of litter transport and current PMCS.
5	.22, .38, .40, 45 Cal, 9mm, 10mm Pistol, M16/M4 Rifle (5.56mm); M249 SAW MG (5.56mm); M240B MG (7.62mm)	(5.56mm and Below) Current Certified Combat Life Saver (Any MOST), litter, radio communication, CLS aid bag and all required CL VIII items, with current expiration dates, dedicated CASEVAC capable of litter transport and current PMCS.
		(7.62mm) MOS Qualified Medic/EMT, litter, radio communication, complete medical aid bag and all required CL VIII items, with current expiration dates, dedicated CASEVAC capable of litter transport and current PMCS.
7	22, .38, .40, 45 Cal, 9mm, 10mm Pistol, M16/M4 Rifle (5.56mm); M136, AT-4; MK-19 Grenade Launcher MG.	(Pistol/5.56mm) Current Combat Life Saver (Any MOS) , litter, radio communication, CLS Aid bag and all required CL VIII items, with current expiration dates, dedicated CASEVAC capable of litter transport and current PMCS.
		(M136/AT4) MOS Qualified Medic/EMT, litter, radio communication, complete medical aid bag and all required CL VIII items, with current expiration dates, dedicated CASEVAC capable of litter transport and current PMCS. *** M287 trainer firing 9mm tracer only may use Combat Life Saver (Any MOS).
8	9mm, 10mm, .40 Cal., and .45 Cal Pistol; M16/M4; M203 40-MM (or equivalent)	(40mm) MOS Qualified Medic/EMT, litter, radio communication, complete medical aid bag and all required CL VIII items, with current expiration dates, dedicated CASEVAC capable of litter transport and current PMCS.
		(Pistol/5.56mm) Current Combat Life Saver (Any MOS) , litter, radio communication, CLS Aid bag and all required CL VIII items, with current expiration dates, dedicated CASEVAC capable of litter transport and current PMCS.
9	.38 , .40, .45 Cal., 9mm, 10mm, Pistol	Current Certified Combat Life Saver (Any MOS) , litter, radio communication, CLS Aid bag and all required CL VIII items, with current expiration dates, dedicated CASEVAC capable of litter transport and current PMCS.
10	.410 to 12 Gauge Shotguns	Current Certified Combat Life Saver (Any MOS) , litter, radio communication, CLS Aid bag and all required CL VIII items, with current expiration dates, dedicated CASEVAC capable of litter transport and current PMCS.

RED Blocks signify MOS Qualified Medic or EMT at minimum is needed to run the range/course.

GREEN Blocks require a CLS qualified person at minimum is needed to run the range/course.



# Medic Requirement Matrix



RANGE/COURSE	WEAPON SYSTEMS	MEDICAL REQUIREMENTS
11A, 11B, 11	5.56mm (NO 5.56 SAW MG authorized)	Current Certified Combat Life Saver (Any MOS) , litter, radio communication, CLS Aid bag and all required CL VIII items, with current expiration dates, dedicated CASEVAC capable of litter transport and current PMCS.
12	Trinitrotoluene (TNT), Dynamite, Composition C4, Shaped Charges, Bangalore Torpedo, Detonation Cord & Blasting Caps; M18A1 Claymore Mine	MOS Qualified Medic/EMT, litter, radio communication, complete medical aid bag and all required CL VIII items, with current expiration dates, dedicated CASEVAC capable of litter transport and current PMCS.
13	60mm Mortar; 81mm Mortar, M252, M29A1; 120mm Mortar	MOS Qualified Medic/EMT, litter, radio communication, complete medical aid bag and all required CL VIII items, with current expiration dates, dedicated CASEVAC capable of litter transport and current PMCS.
15	.40, 45 Cal, 9mm, 10mm Pistol, M16/M4 Rifle (Blank, SESAMS, Simunitions, UTM), 40mm (TP only)	(Blank, SIMS, UTM) Current Certified Combat Life Saver (Any MOS) , litter, radio communication, CLS Aid bag and all required CL VIII items, with current expiration dates, dedicated CASEVAC capable of litter transport and current PMCS.
LFX 1-LFX 5	5.56mm (NO 5.56 SAW MG authorized)	MOS Qualified Medic/EMT, litter, radio communication, complete medical aid bag and all required CL VIII items, with current expiration dates, dedicated CASEVAC capable of litter transport and current PMCS.
Anzio Obstacle Course	None	Current Certified Combat Life Saver (Any MOS) , litter, radio communication, CLS Aid bag and all required CL VIII items, with current expiration dates, dedicated CASEVAC capable of litter transport and current PMCS.
CRBN Chamber	CS Gas	MOS Qualified Medic/EMT, litter, radio communication, complete medical aid bag and all required CL VIII items, with current expiration dates, dedicated CASEVAC capable of litter transport and current PMCS.
Land Navigation Courses 1-3	None	Current Certified Combat Life Saver (Any MOS) , litter, radio communication, CLS Aid bag and all required CL VIII items, with current expiration dates, dedicated CASEVAC capable of litter transport and current PMCS.
Lundy Leadership Reaction Course	None	Current Certified Combat Life Saver (Any MOS) , litter, radio communication, CLS Aid bag and all required CL VIII items, with current expiration dates, dedicated CASEVAC capable of litter transport and current PMCS.
Marne Confidence Course	None	MOS Qualified Medic/EMT, litter, spine board, neck brace, radio communication, complete medical aid bag and all required CL VIII items, with current expiration dates, dedicated CASEVAC capable of litter transport and current PMCS.
MOUT Sites	.40, 45 Cal, 9mm, 10mm Pistol, M16/M4 Rifle (Blank, SESAMS, Simunitions, UTM), Smoke, Practice Hand Grenades	(Blanks, SIMS, Practice Hand Grenades) Combat Life Saver (Any MOS) , litter, radio communication, CLS Aid bag and all required CL VIII items, with current expiration dates, dedicated CASEVAC capable of litter transport and current PMCS.
Water Confidence Course	None	Qualified lifeguard (2x) with water safety certification and MOS qualified medic. Motor propelled rescue boat with assigned operator.

RED Blocks signify MOS Qualified Medic or EMT at minimum is needed to run the range/course.

GREEN Blocks require a CLS qualified person at minimum is needed to run the range/course.





# Rank Requirement Matrix



The range rank requirements as outlined in DA PAM 385-63, Table 1-1, dated 14 April 2014:

Weapon System	OIC <sup>1</sup>			RSO <sup>1</sup>		
	Officer	Warrant	NCO	Officer	Warrant	NCO
Practice hand grenades; sub-caliber training devices; laser devices; firing devices; simulators and trip flares; small arms and machine guns.	Any Rank	Any Rank	E-6	Any Rank	Any Rank	E-5
Chemical Agents and Smoke <sup>2</sup>	Any Rank	Any Rank	E-6	Any Rank	Any Rank	E-5
Aerial gunnery and air defense weapons; live grenades, grenade launchers, and grenade machine guns; live mines and demolitions; tank and fighting vehicle cannons.	Any Rank	Any Rank	E-7	Any Rank	Any Rank	E-6
Field Artillery <sup>3</sup>	Any Rank	Any Rank	E-7	Any Rank	Any Rank	E-6
Mortars	Any Rank	Any Rank	E-6	Any Rank	Any Rank	E-6
Air defense artillery rockets and guided missiles	Any Rank	Any Rank	X	Any Rank	Any Rank <sup>4</sup>	X
Direct fire antitank rockets and missiles	Any Rank	Any Rank	E-7	Any Rank	Any Rank	E-6
Live-fire exercises using organic weapons, squad through company, battery, troop.	Any Rank	Any Rank	E-7	Any Rank	Any Rank	E-6
CALFEX/CAX using outside fire support, troop, battery, squad, platoon, company; or battalion or larger. <sup>5</sup>	Any Rank	Any Rank	E-7	Any Rank	Any Rank	E-6

## Notes:

1 – Civilians in the grade of general schedule (GS)-07 and above, or equivalent, may act as OIC; GS-05 and above, or equivalent, may act as RSO.

2 – For the Marine Corps, OIC and RSO must be E-4 and above and be chemical, biological, radiological, and nuclear (CBRN) MOS 5702/5711 when conducting CBRN or smoke training. For the Army, OIC and RSO must be CBRN qualified when conducting CBRN or smoke training.

3 – Use of E-7s as OICs is authorized only when approved by the senior commander (Army)/installation commander (Marine Corps). Duties of the RSO are normally performed by either the battery executive officer or the platoon leader.

4 – The Senior Range Safety Officer (SRSO) will be a chief warrant officer four or higher, or a civilian in the grade of GS-12 or above.

5 – For battalion or larger CALFEX/CAX, OIC will be a field grade commissioned officer; exercise RSO will be E-7 or above.



# Anzio Obstacle Course



The Anzio Obstacle Course consists of 8 obstacles. The Anzio obstacle course has low obstacles that must be negotiated quickly, and measure the soldier's ability for basic motor skills and physical conditioning. The Anzio Obstacle course is designed to instill confidence in the mental and physical abilities. It is designed for soldiers to receive instruction and practice their skills and then run the obstacle course for time.



**Location:** Anzio Obstacle Course is located in Training Area K at Camp Buckner IVO WL78877829.

**Facilities:** Military Vehicles – Military parking is next to the course. Civilian Privately Owned Vehicles (POVs) – Camp Buckner parking area next to Camp Manager's Office.

## **Special Instructions:**

Inspect structural integrity and safety devices prior to use. Report all deficiencies to Range Operations immediately. Landing and fall areas under obstacles are to be raked and refilled as needed prior to and after use of obstacles. The act of shaking ropes, rolling logs, or making any obstacle more difficult is STRICTLY prohibited. See West Point Reg. 350-11 for more information.

**Medical Requirements:** A soldier first responder, equipped with a litter, radio communication, and a complete medical aid bag, containing all required CL VIII items that have a valid expiration date. A dedicated medical evacuation vehicle, capable of transporting a litter, and properly equipped, and with a current PMCS. Medical aid personnel assigned to this site, along with the supporting medical vehicle, will not be used for any other duty.

**Safety & Security:** Based upon the Commander's discretion and/or the OIC/NCOIC's risk assessment Ballistic (Kevlar or Army Combat Helmet (ACH) is to be worn for safety and protection by all personnel negotiating each obstacle. The use of leather gloves is recommended

**Communications:** All specialty courses must maintain two separate means of communication with Range Operations at all times. Primary means of communication with Range Operations will be by issued Motorola Handheld on the "Live Fire" Channel. There is NO commercial telephone available at the Anzio Obstacle Course.



# Anzio Obstacle Course



**Horizontal Ladder:** To successfully negotiate this obstacle, traverse the ladder using the following technique. Grasp the first rung overhead with the palms facing forward and suspend the body. To propel the body forward, release one hand and move forward to secure a new grasp. At the same time, swing the opposite side of the body forward. Release the other hand and move it forward to re-grasp another rung. Continue this technique grasping each and every rung until reaching the last rung. Suspend the body from the last rung, then drop to the ground.



Horizontal Ladder Obstacle

**Run-Dodge-Jump:** To successfully negotiate this obstacle, traverse the ladder using the following technique. Grasp the first rung overhead with the palms facing forward and suspend the body. To propel the body forward, release one hand and move forward to secure a new grasp. At the same time, swing the opposite side of the body forward. Release the other hand and move it forward to re-grasp another rung. Continue this technique grasping each and every rung until reaching the last rung. Suspend the body from the last rung, then drop to the ground.



Run-Dodge-Jump Obstacle





# Anzio Obstacle Course



**Step Over:** To successfully negotiate this obstacle by carefully placing one foot/leg over each bar at a time. Next leg will either be placed next to the first leg or may be used to step over the next successive bar (Depending on height and leg length of the soldier).



Step Over



Hurdles

**Hurdles:** To successfully negotiate this obstacle you will grab the bar in your lane with both hands and jump swinging your legs up and over the bar. You will grab the next bar and jump and swing your legs over in the opposite direction alternating the swing of your legs with each hurdle.

**Pyramid:** To successfully negotiate this obstacle by grabbing the rope and carefully climb up in a walking or hunched over stance. Once you reach the top you will swing your body over the top and carefully slide down feet first.





# Anzio Obstacle Course



**Tarzan:** This obstacle is successfully navigated by jumping up and grabbing the bars overhead. You will place your body in a slight swinging motion and reach forward grabbing the next bar with your first hand. After grabbing the bar, your body will swing forward and you will let go with your second hand and reach and grab the bar past your first hand. You will continue to alternate grabbing the bars as you move forward until you reach the last bar.



Tarzan



The Wall

**The Wall:** Soldier step forward approaching the wall. They will place their hands on the wall and lift up their body. Then one of either leg will be swung over the wall while the body follows the motion of the leg (The body may be laying on the top of the wall at this point). The other leg will then be swung over the top of the wall and the body will shift along the wall and Soldier drops down on the other side of the wall.





# Appomattox Combative Pit



The Appomattox Combative Pit consists of a mulch-filled combative pit, adjacent to Camp Buckner, HLZ Owl, and Route 293. This site is used for instruction and practice of hand to hand combat skills and can be used for Pugil stick instruction and practice.







# Helo Landing Zones (HLZs)



The HLZs around West Point are used for multiple purposes depending on location. All HLZs are kept clear of debris and well maintained. Some HLZs have concrete landing pads to facilitate aircraft landing.

**Locations:** The HLZs are located:

HLZ Buckner	WL78667807
HLZ Bull	WL77757851
HLZ Condor	WL82247498
HLZ Crow	WL78698089
HLZ Eagle	WL80277781
HLZ Falcon	WL80337699
HLZ Keller	WL85408380
HLZ Morgan	WL85167799
HLZ North Dock	WL87248342
HLZ Owl	WL79637859
HLZ Range 2	WL83168138
HLZ Raven	WL82527654
HLZ Vulture	WL80777651

**Facilities:** Military Vehicles – Military parking varies depending on HLZ being used. Contact Range Operations for possible locations that can be used. Civilian Privately Owned Vehicles (POVs) – No POVs are authorized IVO any HLZ.

**Special Instructions:** Inspect structural integrity and safety devices prior to use. Report all deficiencies to Range Operations immediately.  
See West Point Reg. 350-11 for more information.

**Medical Requirements:** None when used for standard military training. When conducting AASLT training, a trained medical aid person, MOS qualified. This individual will be equipped with a litter, spine board, neck brace and radio communication, and a complete medical aid bag, containing all required CL VIII items that have a valid expiration date. A dedicated medical evacuation vehicle, capable of transporting a litter, and properly equipped, and with a current PMCS. Medical aid personnel assigned to these ranges, along with the supporting medical vehicle, will not be used for any other duty.

**Safety & Security:** All personnel will maintain safe distances at all times while the aircraft are landing. HLZ Raven may not be used if there are ANY live ranges. HLZ Range 2 may not be used if there is any 105mm live and/or expended ammunition IVO of the landing area.

**Communications:** Primary means of communication with Range Operations will be by issued Motorola Handheld on the “Live Fire” Channel. **There is NO commercial telephone available at any of the HLZs.**



# Lundy's Lane LRC



Lundy's Lane Leadership Reaction Course (LRC) is an outdoor leader and team building facility. Thirteen (13) structured "leadership challenges" encourage participants to think, react and work as a team to solve problems in a determined period of time. Leaders receive a mission; brainstorm and problem solve with their team using only the materials provided and then execute and re-adjust to compete in the obstacles challenge. The obstacles present a challenging and unique learning environment that can only be overcome with leadership and teamwork.



**Location:** Lundy's Lane LRC is located in training area K IVO grid WL79337766. Access is off of Route 293, approx. ¾ mile south of Mine Torne Road.

**Facilities:** Military Vehicles – Military parking is next to the course. Civilian Privately Owned Vehicles (POVs) – Available on site for OIC/RSO only. Two (2) porta johns are available and located in the parking lot.

**Special Instructions:** Inspect structural integrity and safety devices prior to use. Report all deficiencies to Range Operations immediately. Landing and fall areas under obstacles are to be raked and refilled as

**Special Instructions (cont):** needed prior to and after use of obstacles. The act of making any obstacle more difficult is **STRICTLY** prohibited. **All solutions to every task can be located in the LRC SOP Binder at Range Operations.**

See West Point Reg. 350-11 for more information.

**Medical Requirements:** A current qualified Combat Lifesaver (MOS immaterial). This individual will be equipped with a litter, Spine board, neck brace and radio communication, and a complete medical aid bag, containing all required CL VIII items that have a valid expiration date. A dedicated medical evacuation vehicle, capable of transporting a litter, and properly equipped, and with a current PMCS. Medical aid personnel assigned to this site, along with the supporting medical vehicle, will not be used for any other duty.

**Safety & Security:** Based upon the Commander's discretion Ballistic (Kevlar or Army Combat Helmet (ACH) **WILL** be worn for safety and protection by all personnel negotiating each obstacle. The use of leather gloves is recommended.

**Communications:** All specialty courses must maintain two separate means of communication with Range Operations at all times. Primary means of communication with Range Operations will be by issued Motorola Handheld on the "Live Fire" Channel. There is NO commercial telephone available on site.



# Maddock Drop Zone



The Maddock Drop Zone is a circular-shaped drop zone with a diameter of 600 meters located directly north of Lake Frederick. This Drop Zone is for the exclusive use of the USMA Airborne Detachment and the USMA Cadet Parachute Team.



**Location:** The Maddock DZ is located north of Lake Frederick IVO grid W75357728.

**Facilities:** Military Vehicles – Military vehicles may be parked along Smith Clove Road or in the field to the left of the road as seen above. Civilian Privately Owned Vehicles (POVs) – POVs may park IVO Lake Frederick at designated parking areas only.

**Special Instructions:** Inspect structural integrity and safety devices prior to use. Report all deficiencies to Range Operations immediately. See West Point Reg. 350-11 for more information.

**Medical Requirements:** A trained medical aid person, MOS qualified. This individual will be equipped with a litter, Spine board, neck brace and radio communication, and a complete medical aid bag, containing all required CL VIII items that have a valid expiration date. A dedicated medical evacuation vehicle, capable of transporting a litter, and properly equipped, and with a current PMCS. Medical aid personnel assigned to these ranges, along with the supporting medical vehicle, will not be used for any other duty.

**Safety & Security:** All personnel will maintain safe distances at all times while the aircraft are landing.

**Communications:** All specialty courses must maintain two separate means of communication with Range Operations at all times. Primary means of communication with Range Operations will be by issued Motorola Handheld on the “Live Fire” Channel. **There is NO commercial telephone available at the Maddock DZ.**







# Marne Confidence Course



The Marne Confidence Course consists of 19 obstacles arranged in four colors. Each quadrant consists of 4-6 obstacles. Colored quadrants provide for a progressive and challenging negotiation of obstacles starting at the blue quadrant, then red, white and finally the black quadrant. The Marne Confidence Course is designed to instill confidence in the mental and physical abilities and cultivates the spirit and daring, that helps develop physical capacities and fundamental skills and abilities that are important for combat operations. DO NOT negotiate these obstacles at high speed or against time. Obstacles vary in difficulty.



**Location:** The Marne Confidence Course is located in Training Area K, IVO grid WL78937770.

**Facilities:** Military Vehicles – Military parking is next to the course. Civilian Privately Owned Vehicles (POVs) – Upper Area K adjacent to the confidence course.

**Special Instructions:** Inspect structural integrity and safety devices prior to use. Report all deficiencies to Range Operations immediately. Landing and fall areas under obstacles are to be raked and refilled as needed prior to and after use of obstacles. The act of shaking ropes, rolling logs, or making any obstacle more difficult is STRICTLY prohibited. See West Point Reg. 350-11 for more information.

**Medical Requirements:** A trained medical aid person, MOS qualified. This individual will be equipped with a litter, Spine board, neck brace and radio communication, and a complete medical aid bag, containing all required CL VIII items that have a valid expiration date. A dedicated medical evacuation vehicle, capable of transporting a litter, and properly equipped, and with a current PMCS. Medical aid personnel assigned to these ranges, along with the supporting medical vehicle, will not be used for any other duty.

**Safety & Security:** Based upon the Commander's discretion Ballistic (Kevlar or Army Combat Helmet (ACH) **WILL** be worn for safety and protection by all personnel negotiating each obstacle. The use of leather gloves is recommended.

**Communications:** All specialty courses must maintain two separate means of communication with Range Operations at all times. Primary means of communication with Range Operations will be by issued Motorola Handheld on the "Live Fire" Channel. **There is NO commercial telephone available at the Marne Confidence Course.**



# NBC Site



The Verdun Chemical, Biological, Radiological and Nuclear (CBRN) training site and CS chamber is used to conduct Mask Confidence Training (MCT) by demonstrating the effectiveness of personal protective equipment (PPE) in protecting against CBRN hazards.



**Location:** The Verdun CBRN training site and CS chamber is located in Training Area R IVO grid WL75967738.

**Facilities:** Dimensions: 19 feet by 20 feet; 8 feet walls with a 13 foot peak ceiling. Bleachers are available for safety briefings and training.

**Parking:** Military Vehicles – Military parking is next to the course. Civilian Privately Owned Vehicles (POVs) – Parking area is located next to Gate #31 just off Proctoria Road.

**Special Instructions:** Inspect structural integrity and safety devices prior to use. Report all deficiencies to Range Operations immediately. Ensure that only CS in capsule form (DODIC: K765) is used in the CS chamber. Do not use CS grenades in confined spaces. Always follow environmental guidelines and material safety data sheets (MSDSs). Contacts are not authorized. See West Point Reg. 350-11 for more information.

**Medical Requirements:** A trained medical aid person, MOS qualified. This individual will be equipped with a litter and radio communication, and a complete medical aid bag, containing all required CL VIII items that have a valid expiration date. A dedicated medical evacuation vehicle, capable of transporting a litter, and properly equipped, and with a current PMCS. Medical aid personnel assigned to these ranges, along with the supporting medical vehicle, will not be used for any other duty.

**Safety & Security:** See the following page for safety and security concerns.

**Communications:** Primary means of communication with Range Operations will be by issued Motorola Handheld on the “Live Fire” Channel. There is a commercial telephone located at Building 1857, telephone number is (845) 938-5124.



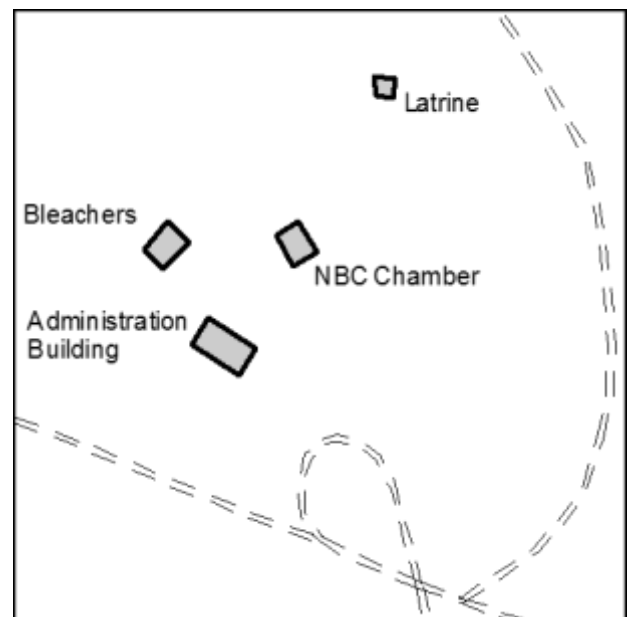
# NBC Site



## Potential Safety Concerns at the Verdun NBC Site:

- Obtain medical evaluation as required. Before being exposed to chemical training agents, Soldiers with respiratory conditions (including histories of asthma, cardiac conditions, severe facial acne, or any active dermatitis) will be referred to a medical officer. Also, soldiers with open wounds and women who are menstruating or pregnant, or suspect that they may be pregnant should be referred to a medical officer. The medical officer evaluates the health records of these individuals and, when necessary, examines them to determine their ability to undergo training without undue risk. The findings and recommendations of the medical officer are recorded in the individual's health record.
- Do not wear contact lenses while wearing the individual protective mask. Individuals who normally wear contact lenses must remove them and use optical inserts. Unnecessary eye irritation will occur if CS particles are trapped under contact lenses. The lenses may also be lost due to excessive tearing. All Soldiers requiring corrective lenses will have masks with correctly fitted optical inserts before participating in MCT.
- Ensure that an adequate water supply is available during the MCT. Soldiers should be encouraged to drink plenty of water based on the additional heat stress placed on them.
- Ensure that a fire extinguisher is available, and identify its location.
- Fit and test protective masks according to appropriate mask technical manuals.
- Ensure that instructors are combat lifesaver (CLS) certified.
- Ensure that instructors are clearly identifiable.

**CAUTION: High temperature dispersion (greater than 700°C) of CS may release hydrogen cyanide and hydrogen chloride.**







# Pine Ridge Rappel Site



The Pine Ridge Rappel Site offers a 25 foot practice wall and 75 foot rappel wall. Lanes are also available for hasty rappel, body rappel and balance climb. The Pine Ridge Rappel Site offers facilities for the training of beginner through advanced rappelling. It is designed for soldiers to receive instruction, practice their skills and then conduct rappel training.



**Location:** The Pine Ridge Rappel Site is located at WL77227615 in Training Area A1. The site is accessed through Gate 38 on Bull Pond Road.

**Facilities:** Military Vehicles – Military parking is next to the course. Civilian Privately Owned Vehicles (POVs) – Range Operations will issue parking passes for the OIC and RSO. There is no other POV parking available.

**Special Instructions:** Inspect structural integrity and safety devices prior to use. Report all deficiencies to Range Operations immediately. **A AASLT/Ranger/Sapper or Rappel Master or Civilian equivalent must be on site at all times during training.** See West Point Reg. 350-11 for more information.

**Medical Requirements:** A trained medical aid person, MOS qualified. This individual will be equipped with a litter, Spine board, neck brace and radio communication, and a complete medical aid bag, containing all required CL VIII items that have a valid expiration date. A dedicated medical evacuation vehicle, capable of transporting a litter, and properly equipped, and with a current PMCS. Medical aid personnel assigned to these ranges, along with the supporting medical vehicle, will not be used for any other duty.

**Safety & Security:** Ballistic (Kevlar or Army Combat Helmet (ACH) is to be worn for safety and protection by all personnel negotiating, participating in rappelling activities, and individuals in close proximity to rappel tower. The use of ACH and leather gloves is mandatory. Gloves should be re-enforced, preferably with a double-layered, abrasion resistant surface on palms

**Communications:** All specialty courses must maintain two separate means of communication with Range Operations at all times. Primary means of communication with Range Operations will be by issued Motorola Handheld on the "Live Fire" Channel. **There is NO commercial telephone available at the Rappel Site.**



# South Dock Rappel Tower



The South Dock Air Assault Tower Site offers a 34' Rappel Tower and six-lane Slant Wall. The Air Assault Tower Site offers facilities for the training of beginner through advanced rappelling. It is designed for Soldiers to receive instruction, practice their skills and then conduct rappelling training. The tower supports training in Harness Swiss Seat Rappelling. The Slant Wall supports Harness, Hasty and Body Rappelling.

**Location:** The Air Assault Tower is located at 18TWL8759982804 near South Dock on the West Point Cantonment Area. The site is accessed via Ernst Road.

**Facilities:** Military Vehicles – Military parking is next to the course. Civilian Privately Owned Vehicles (POVs) – POVs may be parked along Ernst Road.

**Special Instructions:** Inspect structural integrity and safety devices prior to use. Report all deficiencies to Range Operations immediately. The act of shaking ropes or making any obstacle more difficult is STRICTLY prohibited. Australian rappelling or any method wherein an individual descends to the ground head first (facing the ground) is strictly prohibited. **A AASLT/Ranger/Sapper or Rappel Master or Civilian equivalent must be on site at all times during training.** See West Point Reg. 350-11 for more information.

**Medical Requirements:** A trained medical aid person, MOS qualified. This individual will be equipped with a litter, Spine board, neck brace and radio communication, and a complete medical aid bag, containing all required CL VIII items that have a valid expiration date. A dedicated medical evacuation vehicle, capable of transporting a

**Medical Requirements (cont):** litter, and properly equipped, and with a current PMCS. Medical aid personnel assigned to this site, along with the supporting medical vehicle, will not be used for any other duty.

**Safety & Security:** Ballistic (Kevlar or Army Combat Helmet (ACH) is to be worn for safety and protection by all personnel negotiating, participating in rappelling activities, and individuals in close proximity to rappel tower. The use of ACH and leather gloves is mandatory. Gloves should be re-enforced, preferably with a double-layered, abrasion resistant surface on palms

**Communications:** All specialty courses must maintain two separate means of communication with Range Operations at all times. Primary means of communication with Range Operations will be by issued Motorola Handheld on the "Live Fire" Channel. **There is NO commercial telephone available at the Rappel Tower.**





# Water Confidence Course



The Bull Run Water Confidence Course (WCC) is designed to instill confidence in the mental and physical abilities and cultivates the spirit and daring, that helps develop physical capacities and fundamental skills and abilities that are important for combat operations.



**Location:** The course is located on Camp Bucker IVO grid WL78667826.

**Facilities:** Military Vehicles – Parking is available outside the gate to White Oak Island. Civilian Privately Owned Vehicles (POVs) – Adjacent to the WCC in designated parking areas.

**Special Instructions:** Inspect structural integrity and safety devices prior to use. Report all deficiencies to Range Operations immediately. See West Point Reg. 350-11 for more information.

**Medical Requirements:** A trained medical aid person, MOS qualified, or EMT. This individual will be equipped with a litter, spine board, neck brace and radio communication, and a complete medical aid bag, containing all required CL VIII items that have a valid expiration date. A dedicated medical evacuation vehicle, capable of transporting a litter, and properly equipped, and with a current PMCS. Medical aid personnel assigned to this site, along with the supporting medical vehicle, will not be used for any other duty. Safety Boat (Designated, Powered Rescue Boat) with 2 Rescue Personnel (Red Cross Certified Lifeguard). The boat operator cannot be considered as one of the rescue personnel. A type (V) vest is required. Other Water Rescue Items are at Commander's discretion.

**Safety & Security:** Personnel stationed at the Slide for Life must be tied-off to structure to prevent falling. Weak swimmers and personnel will weak upper body strength will wear a military PT belt around their waist. Other PPE will be worn at the Commander's discretion.

**Communications:** All specialty courses must maintain two separate means of communication with Range Operations at all times. Primary means of communication with Range Operations will be by issued Motorola Handheld on the "Live Fire" Channel. **There is NO commercial telephone available at the WCC.**





# Water Confidence Course



## Beam and Rope Traverse:

- One cadet on first tower, one cadet at base of first tower, one cadet on center tower, one cadet on far tower, and one cadet at water exit point.
- The CDT CIC at the base of tower will send a CDT up the ladder once the CDT on tower one begins walking across the first beam.
- The CDT CIC on tower one will instruct the CDT to “go” when the CDT on the center tower begins moving forward and then observe the CDT walking across beam 1.
- The CDT CIC on the center tower will instruct the CDT to “go” when the CDT on the far tower has mounted the rope.
- The CDT CIC on the far tower will instruct the CDT to mount the rope head first and monkey crawl to the Recondo “tab” (refer to MOI for detailed instructions).
- Once at the tab on the rope drop the cadet must request “permission to hang” and then the cadet will be given permission to “hang.”
- Once in a hanging position, cadet will request “permission to drop,” and then cadet will be given permission to “drop.”
- When the CDT surfaces from the water, they will signify a safe insertion by tapping their head. The far tower CIC will tell him/her if she is a “Go” or “No Go.”





# Water Confidence Course



## Slide For Life:

- a. One cadet tower CIC on the top of the tower, one at base of tower, one on middle platform, and two operating pulley system.
- b. One cadet at the top of the tower will be responsible for the safe execution of the slide for life (a DPE instructor will supervise and advise the tower CIC). The tower CIC will tell the middle platform to send up the next CDT when one CDT exits the slide for life. The tower CIC will remove the trolley from the pulley system and place it on the cable. The CIC will instruct the next CDT to hold the trolley and then will emplace the snap link. The tower CIC will give the hand and arms signal "ok" to the flagman by tapping the top of his hand with an open palm and wait until he receives the same return signal from the flagman. (Refer to MOI for detailed instructions).
- c. One cadet will be positioned on the middle platform and will control CDT movement to the top of the tower. Only one CDT will move on the ladder to the top platform at a time.
- d. Two cadets should be positioned at the middle platform at all times.
- e. One cadet will be positioned at the base of the tower and will instruct CDT's to move to the middle platform.
- f. Two cadets will assume duties as trolley pulley operators. Their uniform is ACU's, Kevlar/ACH, and leather gloves. They will pull the trolleys up the pull and ensure that no one is directly under the pulley in case a trolley falls from the 80' tower. These cadets should be rotated out frequently.
- g. One cadet will assume the duties of the flagman (read flagman signals listed above).
- h. One cadet will remove the trolleys from the cable and inspect each trolley for wear. Let DPE cadre know if any nuts/bots are backing out (inspect sliver index marks).
- i. Safety: If at any time a Cadet witnesses an unsafe act or a failure of equipment, training will be halted.





# EST

## Engagement Skills Trainer



The EST consists of 10 lanes and approximately 400 different scenarios to conduct training. Scenarios cover a range of situations from IDF, DF, vehicle assaults, helicopter operations, grouping and zeroing, and qualification.

**Location:** The EST Office is located in Washington Hall, 6<sup>th</sup> Floor, Room 6315. The EST is located in Room 6309 down the hall from the office.

**Weapons and Ammunition:** The EST provides training opportunities on the following weapons systems: M2, M4/M16, M240B, M249, M203, M320, M9, Shotgun, AT-4, and Mk19s.

**Vehicle Parking:** Parking is available for vehicles with approved CPA passes in the Clinton Lot located IVO Tennis Courts and Trophy Point. All other vehicles without a CPA parking pass must park at Buffalo Soldier field and take bus transportation to Washington Hall.

**Special Instructions:** Classroom instructions to users is recommended to ensure trainees know proper weapon fundamentals for safety and in weapon usage. Scenario runners are required to have a block of instruction scheduled with the EST Manager in how to utilize the EST and run the software. Blocks of instruction can take between 1-2 hours depending on depth of instruction needed for software and scenarios to be used. **Only EST personnel will at any time mess with any equipment cables or replace weapon systems unless proper approval has been given by the EST Manager.**

**Firing Points:** There are 10 firing points at the EST. Weapon can be emplaced on any lane provided the scenario being ran supports the use of that weapon system.

**Targets:** Targets can be vehicles, personnel in the scenario, and helicopters depending on the scenario that is running.

**Telephone:** 845-938-7960/2287

