

Identifier: DPTM-SOP-R04	Revision: 0	Effective Date: 11 Dec 18	
Document Approval Date:		11 December 2018	
Proponent: USAG-WP, Dir Plans, Tng, Mob & Security			

U.S. Army Garrison-West Point DPTMS – Range Operations Policy & Procedures

Standard Operating Procedure Range 4A / 4 (*Inchon*) 25 Meter Range



Department of the Army
U.S. Army Garrison West Point
United States Military Academy
West Point, New York 10996-5000

Document History

Document Location

All hard copies will be located at Building 1403 Range Operations Fire Desk. Also, electronic copies may be retrieved via DPTMS website (Training Link), or upon request.

Revision History

Date of this revision: 11 Dec 18	Date of next revision:
----------------------------------	------------------------

Revision Number	Revision Date	Summary of Changes	Author
1	11 Dec 18	Addition of Range 4A	Lake
2			
3			
4			

Approvals

This document requires the following approvals:

Name	Title
	USAG-WP, Range Manager
	USAG-WP, Director of Plans, Training, Mobilization & Security

Distribution Formula

This document has been distributed to:

Office	Name Title

Table of Contents

1.	General Information.....	5
1.1	Purpose.....	5
1.2	Applicability	5
1.3	Responsibility.....	5
1.4	References.....	5
1.5	Suggested Improvements	5
2.	Range Description & Characteristics	6
2.1	Range Description & Definitions.....	6
2.2	Range Location.....	6
2.3	Standard Supported Courses of Fire	7
2.4	Authorized Weapons & Ammunition	7
2.5	Range Specific Safety Measures	7
2.6	Range Targetry	8
2.7	Range Support Facilities	8
2.8	Authorized Parking.....	8
2.9	Communications	9
3.	Range Safety & Security Procedures	10
3.1	Individual Personal Protection Equipment (PPE).....	10
3.2	Weapons Handling.....	10
3.3	Army Range Safety Memorandums/Messages (ARSMMs)	10
3.4	Unexploded Ordnance (UXO) and Reporting of Duds	10
3.5	Ammunition Amnesty Program.....	11
4.	Range Operational Requirements/Responsibilities.....	12
4.1	Range Officer in Charge (OIC) / Range Safety Officer (RSO) Appointment Requirements	12
4.2	Range Officer in Charge (OIC).....	12
4.3	Range Safety Officer (RSO).....	15
4.4	Range Gate Guards	17
5.	Range Medical Requirements & Evacuation.....	18
5.1	Unit Medical Support Requirements	18
5.2	Keller Army Community Hospital (KACH).....	18
5.3	Serious Incident Report (SIR) Requirements.....	18
5.4	Emergency MEDEVAC Flight Requests.....	18
5.5	Hospital Strip Maps & Directions	19

6.	Range Concept of Operations	20
6.1	Alternate Pistol Qualification Course (APQC) Course of Fire.....	20
6.2	M16/M4 25-Meter Zero & Alternate Course C	22
6.3	Advanced Rifle-Short Range Marksmanship (SRM) Training	25
7.3.1	Advanced Rifle-Short-Range Marksmanship (SRM) Training.....	25
7.	Radio Procedures.....	30
7.1	Requesting a Hot Status	30
7.2	Reporting First Round Fired Down Range.....	30
7.3	Reporting Last Round Fired Down Range	30
7.4	Requesting a Cold Status.....	31
7.5	Requesting a Cease Fire Time.....	31
7.6	Requesting to Lift Cease Fire Time	31
7.7	Change of OIC / RSO.....	32
7.8	Requesting a Radio Check (Hourly at the Top of the Hour).....	32
8.	Range Safety Brief	33
9.	Risk Management & Mitigation	34
10.	Range Safety Danger Zone (SDZ) Graphic	Error! Bookmark not defined.
11.	Reference Information, Reports & Forms	35

1. General Information

1.1 Purpose

This Standard Operating Procedure (SOP) provides standard instructions and checklists for unit and individuals using Ranges 4 and 4A – Basic 25-Meter Zero Ranges. It defines standardized steps and procedures to be followed for its safe and efficient use.

This SOP is directive based and complies with applicable United States Military Academy and Department of the Army Regulations, current doctrine, policy and guidance.

1.2 Applicability

This SOP is designed to provide units with safe range operating procedures and guidelines. It applies to all units of the U. S. Armed Forces, civilian organizations, and individuals who are authorized to use this range or training facility at West Point, and by all applicable users IAW West Point Regulation 350-11 and DA Pam 385-63.

1.3 Responsibility

Use this SOP in conjunction with AR 385-63, DA Pam 385-63 and West Point Reg. 350-11 which provide specific and detailed range firing responsibilities for using units. These directed and required actions are necessary for the safe conduct of all range firing and training. Full compliance IAW the afore-mentioned regulations as well as steps and procedures of this SOP, is the responsibility of the commanders, as well as the personnel of using organizations or units. Personnel of any non-DoD civilian agency or activity, using West Point ranges and training facilities must also comply with the provisions and requirements outlined in West Point Reg. 350-11.

1.4 References

All required and related publications are those covering the training conducted and those listed in the applicable chapters and Appendix A of West Point Reg. 350-11 or other respective regulations, policies and procedures. Additional references are also listed at Appendix A, of AR 385-63 and DA Pam 385-63.

1.5 Suggested Improvements

The proponent of this Standard Operating Procedure (SOP) is the Director of Plans, Training, Mobilization and Security, U.S. Army Garrison West Point, ATTN: DPTMS, Building 621 Wilson Road, United States Military Academy, West Point, New York 10996-5000. Users are encouraged to send comments and suggested improvements on DA Form 2028 (Recommended Changes to Publications and Blank Forms).

2. Range Description & Characteristics

2.1 Range Description & Definitions



2.1.1 Range Description

Ranges 4 and 4A are basic 10/25-meter firing ranges, used to train individual soldiers on the skills necessary to align the sights and practice basic marksmanship techniques against stationary targets. The ranges are designed for training shot grouping and zeroing exercises with the M16 and M4 series rifle. Ranges are also used for night familiarization, short-range marksmanship (SRM) training and 25-meter Alternate Course C qualification, and further satisfies CBRN and Unassisted Night Fire Training and Familiarization per qualification requirements of FM 3-22.9, Rifle Marksmanship M16/M4-Series Weapons.

NOTE: Ranges 4 and 4A may be reserved separately or together as one continuous range.

Additionally, the Range 4 is equipped with an all-weather firing line (AWFL). Use of the AWFL is **ONLY** authorized during winter time periods when the firing line cannot be plowed. Use of the AWFL will require repositioning of target frames to accommodate a 25m distance.

2.2 Range Location

Ranges 4 and 4A are located in Training Area Z3, at grid WL82508065, which can be accessed off of Highway 293, across from the Range Operations office. A key is required to access these ranges.

2.3 Standard Supported Courses of Fire

Ranges 4 and 4A support target frames at distances of 24, 35 and 50 meters, and the following course of fire with firing point limitations:

RANGE 4 – 80 FIRING POINTS RANGE 4A – 32 FIRING POINTS RANGES 4/4A – 112 FIRING POINTS	RANGE 4 - 40 FIRING POINTS RANGE 4A - 16 FIRING POINTS RANGES 4/4A – 56 FIRING POINTS
M16/M4 25-M Shot Grouping and Zeroing	M16/M4 Unassisted Night Familiarization
M16/M4 Scaled Target Alternate Course C	SRM Phase I - Fundamental Training (note 1)
M16/M4 CBRN Alternate Course C	SRM Phase II - Preliminary SRM Training (note 2)
9mm Alternate Pistol Qualification Course	SRM Phase III - Reflexive Fire Training
	SRM Phase IV – Target Discrimination Training
	SRM Phase V – SRM Practice & Record Qualification
	SRM Phase VI – NOT SUPPORTED (Burst or Barricade Transition Firing)

NOTE:

1. Advanced Rifle-Short Range Marksmanship fundamental training of tasks: Firing Stance, weapon ready positions and movement techniques, Aiming Technique, Point of Aim and Trigger Manipulation.
2. Advanced Rifle-Preliminary Short Range Marksmanship training tasks of: Weapon ready positions and firing stance; magazine changing drills; moving with a weapon; weapon malfunction drills; and target engagement drills.
3. **BURST** or **AUTOMATIC** fire is **PROHIBITED** on this range.
4. Ranges 4 and 4A may be used simultaneously for same or different courses of fire.

2.4 Authorized Weapons & Ammunition

WEAPON CALIBER	AMMUNITION DODIC
9mm, 10mm, .40 Cal and .45 Cal Pistols	A091, A400, A47X, A482, A483, A363, AA49, A36X
12 Gauge Shotgun	A014, A015, A017
5.56mm (No SAW – No M4/M16 Burst-Auto Fire)	A059, AA33, A071, AB56, AB 57, AB 58, AB77

Range Specific Safety Measures

2.4.1 Danger Areas

WEAPON CALIBER	TRAINING AREAS CLOSED

9mm, 10mm, .40 Cal and .45 Cal Pistols	D5, D6, Z2 and Z3
12 Gauge Shotgun	Z3
5.56mm (NO 5.56 SAW MG authorized)	D2, D3, D5, D6, Z1, Z2 and Z3

2.4.2 Range Gate Guard Requirements

A range gate guard will be posted at the Gettysburg Complex entrance guard shack.

2.4.3 Range and Gate Closures

Ranges 4 and 4A require the closure of the following:

GATES	RANGES
Range Road 2. Gates #5, 15 and 18.	LFX 1, 2 and 3

2.5 Range Targetry

Ranges 4 and 4A consist of stationary target frames capable of being emplaced at 25, 35 and 50 meters from the firing line, and is capable of depicting the following targetry:

TARGET DESCRIPTION	TARGET NSN
Target Silhouette, M9	6920-01-276-6604
Target Zero, M16A2/M4	6920-01-395-2949
Target, 25-Meter ALT-C	6920-01-167-1398
Target, Silhouette, Plastic E-Type	6920-00-071-4790
Target, Cardboard, E-Type	6920-00-795-1806

2.6 Range Support Facilities

Ranges 4 and 4A have the following range support facilities to support operations:

Range Tower	Ammunition Breakdown Point
Covered Bleachers	Mess Area
Porta-John Latrines	All-Weather Firing Line

2.7 Authorized Parking

Military Vehicles – Parking is in the lot between Ranges 4 and 5, vicinity grid WL82448079.

Civilian Privately Owned Vehicles (POVs) – Parking is located outside of the range gate in the POV parking area.

2.8 Communications

All live fire ranges must maintain two separate means of communication with Range Operations at all times. Primary means of communication with Range Operations will be by Motorola Handheld "Livefire" Channel. Alternate means of communication will be by commercial telephone in the range tower.

There is a commercial telephone located inside the range tower; telephone number is (845) 938-3757.

A quick reference phone index is located at the front of this SOP Binder.

3. Range Safety & Security Procedures

3.1 Individual Personal Protection Equipment (PPE)

- a. Ballistic (Kevlar or Army Combat helmets (ACH)) **WILL** be worn for safety and protection by all military personnel on the firing line of all ranges. This requirement applies to firer's and non-firer's (coaches, range personnel) alike.
- b. Individual Body Armor (IBA) or Flak Jackets are required on all firing ranges, and **WILL** be worn by all personnel engage in any live fire activity. This reinforces the appropriate combat conditions and proper training environment of any weapon marksmanship training program.
- c. Eye Protection. All personnel engaged in any live fire activity **WILL** wear individual approved eye protection.
- d. Hearing Protection. All personnel engaged in any live fire activity **WILL** wear approved single point hearing protection. This requirement applies to firer's and non-firer's (coaches, range personnel) alike.

3.2 Weapons Handling

- a. Weapons will be carried in such a manner that the muzzle of the weapon is always pointed up and down range.
- b. All weapons will be inspected by the OIC or RSO before firing and upon completion of firing prior to leaving the range to include when using blank ammunition. ALL weapons will be cleared by use of the weapons clearing barrels at the center of the range and visually verified by the Range OIC or RSO upon entering or exiting the firing line.
- c. Under NO circumstances will any weapon be removed from the firing line while loaded or when suspected of having a round in the chamber or receiver.
- d. Weapons may be taken into bleachers but will remain in the possession of the user. They will not be left unattended.
- e. Weapons and ammunition will not be stored in a building or connex overnight on any range or training area.
- f. No burst or automatic fire.
- g. Firing line integrity is mandatory of this lane (no down range movement while any portion of the firing line is hot. (No 15 Degree Rule).

3.3 Army Range Safety Memorandums/Messages (ARSMMs)

Interim changes may be published to AR or DA Pam 385-63 as Army Range Safety Memorandums/Messages (ARSMMs). A file of all current ARSMMs is maintained at Range Operations. Range OIC/RSO personnel will be familiar with ARSMMs associated with specific training being conducted prior to conducting operation on the range.

3.4 Unexploded Ordnance (UXO) and Reporting of Duds

Do NOT touch or disturb any Unexploded Ordnance (UXO) encountered. Leave any UXO discovered in place, including all rounds observed as falling into or within the designated range impact area but which fail to function (detonate). All rounds that fall into the common impact are, but fail to detonate will be reported to Range Operations at the conclusion of the range firing.

If a round, a suspicious item or ordnance, or a UXO item is found outside a designated range firing impact area do NOT disturb the item. Conspicuously mark the item, route traffic a safe distance around. Report the UXO immediately to Range Operations and initiate a dud report.

3.5 Ammunition Amnesty Program

The Ammunition Amnesty Program is designed to ensure maximum recovery of ammunition and explosives. This program is not intended to circumvent normal turn-in procedures. Other munitions and ammunition above 7.62mm will be retrieved only by EOD, ASP or Range Operations personnel. Documentation is not required for turn-in under the Ammunition Amnesty Program. Contact West Point ASP Office at Commercial telephone 938-3216 for further information.

3.6 OIC and RSO Requirements

The chart below depicts OIC and Requirements for Ranges 4, 4A and when used as concurrently:

RANGE	OIC / RS)
Range 4	(1) OIC / (1) RSO
Range 4A	(1) OIC / (1) RSO
Ranges 4 & 4A (Combined) Firing Line Integrity / Same Training Task	(1) OIC / (2) RSO
Ranges 4 & 4A (Combined) No Firing Line Integrity / Separate Tasks	(1) OIC / (2) RSO

4. Range Operational Requirements/Responsibilities

4.1 Range Officer in Charge (OIC) / Range Safety Officer (RSO) Appointment Requirements

WEAPON SYSTEM	OFFICER IN CHARGE (OIC)			RANGE SAFETY OFFICER (RSO)		
	OFF	CADET	NCO	OFF	CADET	NCO
Practice hand grenade simunitions training devices; simulators, and small arms (5.56mm and below)	X	N/A	E6(P)	X	X (Wpns Qualified)	E5(P)
Chemical Agents (CS) and smoke	X	N/A	E6 (MOS Qualified)	X	N/A	E5
Aerial gunnery, live grenades, grenade launchers, grenade machine guns; Live mines, and demolitions.	X	N/A	E7	X	N/A	E6
Field Artillery and LASER ranges	X (0-3)	N/A	N/A	Battery XO X	N/A	N/A
Live Fire Exercises using organic weapons, team through squad.	X	N/A	N/A	X	N/A	E7
Mortars	X	N/A	N/A	X	N/A	E6
Direct fire antitank rockets	X	N/A	E7	X	N/A	E6
Specialty Non-LFX Courses	X	N/A	E6	X	X	X
Specialty Non-LFX Courses (Rappel) * Rappel Master Certified	X*	N/A	E7*	X	N/A	E6

Table 4-1, OIC / RSO Appointment Requirements

4.2 Range Officer in Charge (OIC)

The Range OIC holds the responsibility and accountability for the conduct of the activity and the adherence to governing regulations and guidance.

4.2.1 OIC Qualifications

A commissioned, warrant, or noncommissioned officer (NCO) may serve as a Range OIC. NCOs serving as OIC will be in the grade as shown in Table 4-1 above, at a minimum. Range OICs will be qualified on the weapon(s) systems being fired and will have satisfactorily completed a range safety certification

program in the weapon system(s) for which they are responsible conducted by their Battalion/Unit (O5 & above Command) to which they are assigned.

4.2.2 OIC Actions & Procedures before Range Occupation

STEP	ACTION	TAKEN
1	Thoroughly plan the range operation and/or training activity and determine the personnel and equipment support requirements.	
2	Be weapons system(s) qualified, and that his/her command safety certification and appointment is completed, and on file at Range Operations.	
3	Receive the mandatory Range Operations briefing within ONE DAY prior to use.	
4	Ensure a qualified RSO is command safety certified and appointed, and briefed by Range Operations. OIC briefs the RSO on his/her duties to be performed.	
5	Verify that all personnel in a direct supervisory role or safety position are familiar with the provisions of this SOP, West Point Reg. 350-11, AR/DA Pam 385-63, and the FM/TMs governing the weapon(s) system and ammunition to be fired.	
6	Ensures that the required and appropriate medical support personnel are qualified, and that the appropriate equipment and supplies will be available to support the range operation(s) and/or training activity.	
7	Check in at Range Operations upon arrival to the installation to receive an updated briefing and sign for the range and necessary support equipment.	
8	Assign an Ammo NCO to be responsible for, and to ensure that ammunition and explosives are properly drawn, transported, handled, stored, and accounted for, from time of receipt, to the time of expenditure or turn in.	
9	Develops a composite risk management worksheet for all phases of the range operation(s) and/or training activity, and mitigates initial high and extremely high hazards through appropriate Operations measures, using DA Form 2977.	

4.2.3 OIC Actions & Procedures before Operations

STEP	ACTION	TAKEN
1	Ensures the correct range/firing position and or training facility is occupied, and conducts a joint inventory with a Range Operations representative to ensure the presence and condition of the range facilities and equipment.	
2	Conducts a Range OIC brief to the RSO, Range Safety Assistants, Medical NCO, Assistant Instructors, Ammunition detail, Range Gate Guards and Range/Target Operator, reinforcing their duties and responsibilities on the conduct of the range operation.	
3	Directs and supervises that the required designated areas of the range are established and set up as required/planned.	
4	Establishes primary radio and secondary telephone communications with Range Operations, and notifies Range Operations upon initial occupation.	
5	Ensures that the red range flag is displayed during daylight operations, and that the red flashing light on the flag pole is displayed during periods of limited visibility.	
6	Verify that the down range portion of the range and impact area are clear of unauthorized personnel and that the appropriate range specific safety measures for range gates, barriers, gate guards and danger areas directed by Range Operations have been taken (Refer to paragraph 2.5 of this SOP).	
7	Verify that the required medical personnel and equipment support is on site, with strip maps to local medical treatment facilities is present, prior to requesting a HOT status.	

8	Verify the continuous safety and security of ammunition on the range. Under NO circumstances will ammunition or explosives be unguarded or unattended. Ammunition must be stored in the designated area and NO smoking is allowed within 50 feet of the ammunition or the firing line.	
9	Verify that all weapons are mechanically safe to fire.	
10	Verify that all personnel wear the required personal protection equipment.	
11	Ensures that ONLY authorized courses of fire are conducted per the weapon system	
12	Ensure all applicable references and regulations are physically present and on hand:	
13	Notifies Range Operations and requests permission to place the range in a HOT status (Refer to paragraph 7.1).	
14	Implements risk management actions and applicable Operations measures identified for this phase of the range operations and/or training event.	

4.2.4 OIC Actions & Procedures during Operations

STEP	ACTION	TAKEN
1	Be present at all times in the range tower while the range is in a HOT status, and maintains a constant observation of the firing line at all times during range firing. Be prepared to meet and brief all range visitors/VIPs, and range Operations personnel.	
2	Verify that all personnel prior to firing receive a range safety briefing, and that only authorized weapons and ammunition are about to be used.	
3	Ensures that the left and right range limits are marked and identified by red blinking lights or chem-lights during periods of reduced visibility.	
4	Verify that the quantity of ammunition unpacked at the designated ammunition storage site is kept to the minimum number of rounds needed for efficient firing for the exercise/course of fire being conducted.	
5	Notifies Range Operations when first round is fired down range (Refer to paragraph 7.2).	
6	Ensures that primary and secondary means of communication with Range Operations are maintained, and that hourly radio checks are performed (Refer to paragraph 7.8)	
7	Ensures that communications are maintained with all road/gate guards.	
8	Verify that personnel and/or weapons do NOT move to or leave the firing line without being cleared, and only on permission by the Range Safety Officer.	
9	Maintains a constant observation of the firing line at all times, and that the down range safety danger areas remain clear.	
10	Immediately calls or announces a self-imposed "Cease Fire" and notifies Range Operations when (Refer to paragraph 7.5):	
10a	Any unsafe action is observed or reported by ANY individual observing an unsafe act.	
10b	When communications are lost with Range Operations and/or Gate Guards.	
10c	When any personal injury, major weapon or ammunition malfunction occurs.	
10d	When any personnel, vehicle, animal or aircraft is observed down range, or in the safety zone danger areas.	
10e	When a range or woodland fire is observed.	
10f	When any rounds are observed to land outside the prescribed impact area.	
10g	Whenever the OIC, RSO, or medical support leaves the range	
11	Verify that all weapon malfunctions are handled IAW appropriate FM/TM.	
12	Ensures that all misfires are handled IAW appropriate FM/TM.	
13	Notifies Range Operations when a change in OIC/RSO is needed (refer to paragraph 7.7).	
14	Notifies Range Operations when last round is fired down range (refer to paragraph 7.3).	

15	Implements risk management actions and applicable Operations measures identified for this phase of the range operations and/or training event.	
----	--	--

4.2.5 OIC Actions & Procedures after Operations

STEP	ACTION	TAKEN
1	Notify Range Operations upon completion of firing/training and request permission to go COLD (reference procedure 7.4). Be prepared to report:	
1a	Number of personnel trained.	
1b	Number of rounds expended by type and DODAC.	
2	Verify 100% accountability for all weapons and ammunition.	
3	Verify that ALL personnel are searched for ammunition and brass prior to their departure from the range.	
4	Contact Range Operations for range clearance/inspection after performing the following:	
4a	Range flag is lowered and red blinking lights are recovered (if applicable).	
4b	Police range for all brass. All brass, prescribed CL V recoverable items, packing material and unexpended ammunition are returned to the ASP.	
4c	Police range for all trash and place in local dumpster. NO MREs, kitchen waste or CL V ammunition dunnage will be placed in the dumpsters.	
4d	Check overall condition of the range to include all range support facilities and repair any range targets if applicable.	
4e	Road barriers, gates are re-opened and gate guards are recovered.	
4f	Hand receipted range equipment and supplies are recovered, cleaned and prepared for turn-in.	
5	Conduct a joint inventory IAW range clearance agreement with a range Operations representative for clearance of range/training area, and secure the range facility.	
6	Return all hand-receipted range equipment, along with any applicable reports/forms to Range Operations.	

4.3 Range Safety Officer (RSO)

A direct representative of the Range OIC and is responsible to the OIC for insuring the adequacy of safety of firing, training operations, and ensuring compliance to governing regulations and guidance.

4.3.1 RSO Qualifications

A commissioned, warrant, or noncommissioned officer may serve as the RSO. NCO grade requirements will be in accordance with Table, 4-1 above, at a minimum. Personnel assigned as RSO will have NO other duties during that period of training. RSOs will be qualified on the weapon(s) systems being fired, and will have satisfactorily completed a range safety certification program in the weapon system(s) for which they are responsible conducted by their Battalion/Unit (O5 & above Command) to which they are assigned.

4.3.2 RSO Actions & Procedures before Operations

STEP	ACTION	TAKEN
1	Assist the Range OIC in the planning of the range operation and/or training activity when needed or as applicable to ensure its safe and efficient operation.	

2	Be weapons system(s) qualified, and that his/her command safety certification and appointment is completed, and on file at Range Operations.	
3	Receive the mandatory Range Operations briefing prior to use of range/training facility.	
4	Ensure that all personnel appointed to assistant range safety position roles are qualified and familiar with the provisions of this SOP, West Point Reg. 350-11, AR/DA Pam 385-63, and the FM/TMs governing the weapon(s) system and ammunition to be fired.	
5	Ensure that all personnel appointed to assistant safety position roles are briefed. Recommended ratio of ARSO's to shooters is 1:5.	
6	Ensures that the down range portion of the range and visible portion of the impact area are clear of unauthorized personnel prior to range OIC requesting the range be placed in a HOT status.	
7	Ensures that the required medical personnel and equipment support is on site and remains on site at all times while the range is in a HOT status.	
8	Ensures the continuous safety and security of ammunition on the range.	
9	Assist the Range OIC when needed or as applicable to ensure that the requirements for procedures 4.2.2 and 4.2.3 above are met.	

4.3.3 RSO Actions & Procedures during Operations

STEP	ACTION	TAKEN
1	Be present at all times on the range firing line while the range is in a HOT status, and perform NO other duties except that of the RSO. Ensure safety is paramount.	
2	Receive and organize firing orders, and conduct the following:	
2a	Ensure that all personnel prior to firing receive a range safety briefing, and that only authorized weapons and ammunition are about to be used.	
2b	Ensures that all weapons are mechanically safe to fire.	
2c	Ensures that all personnel wear the required personal protection equipment.	
2d	Verifies the proper type and quantity of ammunition issued to each firer, and ensures that ammunition unpacked is kept to a minimum to ensure efficient firing of the course of fire being conducted.	
3	Ensures that all personnel and/or weapons do NOT move to or from the firing line without being cleared, and only on the permission of the RSO.	
4	Maintain a constant observation of the firing line at all times, and that the visible down range safety area remains clear.	
5	Ensures that all weapons engage targets ONLY within their prescribed lane markers, and that all rounds fired down range remain within the prescribed range limits.	
6	Immediately announces and calls for a self-imposed "CEASE FIRE" and notifies the Range OIC when any of the following is heard or observed:	
6a	Any unsafe action is observed or reported by ANY individual observing an unsafe act.	
6b	When any personal injury, major weapon or ammunition malfunction occurs.	
6c	When any personnel, vehicle, animal or aircraft is visually observed down range.	
6d	When a range or woodland fire is observed.	
6e	When any rounds are observed to land outside the prescribed impact area.	
6f	Whenever the medical support leaves the range.	
7	Ensure that the range ammo issue point maintains accurate and proper accountability of all CL V items during operations on DA Fm 3020-R.	
8	Ensure that all weapon malfunctions are handled IAW appropriate FM/TM.	
9	Ensures that all misfires are handled IAW applicable FM/TM.	
10	Notifies Range OIC when a change in RSO is needed (refer to paragraph 7.7).	

4.3.4 RSO Actions & Procedures after Operations

STEP	ACTION	TAKEN
1	Ensure 100% accountability for all weapons and ammunition.	
2	Ensure that ALL personnel are searched for ammunition and brass prior to their departure from the range.	
3	Report to the Range OIC upon completion of firing/training the following:	
3a	The number of rounds expended by type and DODAC that was issued and tracked by the ammo issue point NCOIC.	
3b	The police of brass on the firing line, and that all brass, prescribed CL V recoverable items, packing material and unexpended ammunition has been accounted for and is prepared for turn-in to the ASP.	
3c	The police of the range overall for all trash, and that the designated areas of the range that were established are recovered back to the original condition.	
3d	That all range targetry repair has been completed if applicable, and that the overall condition of the range and support facilities are in the original condition.	
3e	All hand receipted range equipment and supplies are recovered, cleaned and prepared for turn-in to the Range OIC and/or Range Operations.	
4	Assist the Range OIC when needed or as applicable to ensure that the requirements for procedures 4.2.5 above are met.	

4.4 Range Gate Guards

The Range OIC will ensure gate guards are posted and gates are locked as required for the range being utilized as outlined in paragraph 2.5. Gate guards will be briefed on their duties, the training that is being conducted and perform their duties IAW West Point Reg. 350-11. Personnel acting as gate guards will:

STEP	ACTION	TAKEN
1	Direct authorized visitors to a specific location where the visitors will be met by the Range OIC. When entrance to the range is not authorized, the gate guard will advise visitors to wait or to use another route.	
2	Maintain <u>continuous</u> communications with Range OIC. The arrival of visitors will be reported immediately to the Range OIC. If the gate guard is unsure whether a visitor is authorized on the range, the gate guard will contact the Range OIC for clarification before granting entrance.	
3	Remain at the gate shack or the gate until properly relieved.	
4	POV's will NOT be used to assist in barrier Operations or gate guard duty.	
5	Permit Range Operations personnel and vehicles full and un-restricted access to all ranges and training areas while performing their assigned duties.	

5. Range Medical Requirements & Evacuation

5.1 Unit Medical Support Requirements

Units will comply with the following range medical support requirements:

- a. A current qualified Combat Lifesaver (MOS immaterial). This individual will be equipped with a litter, radio communication, and a Combat Lifesaver (CLS) aid-bag, containing all required CL VIII items that have a valid expiration date.
- b. A dedicated medical evacuation vehicle, capable of transporting a litter, and properly equipped, with a current PMCS. CLS personnel assigned to these ranges, along with the supporting medical vehicle, will not be used for any other duty.

5.1.1 Execution

- a. Using unit medical personnel will review and familiarize themselves with the strip map route(s) to KACH ER and the local community hospital prior to live fire range operations are conducted.
- b. Whenever the dedicated medical aid person or vehicle must leave the area for any reason the range must Cease Fire and remain in a "COLD" status until a replacement is provided, or until the assigned vehicle and medical personnel have returned to the range. Range Operations will then grant the unit permission to re-open the range and place the range in a "HOT" status.
- c. Medical support personnel at the range will provide treatment for minor injuries and basic first-aid for life-threatening injury or illness.
- d. Medical evacuation vehicles will display all frequencies and telephone numbers in case of immediate use:
 - a. Range Operations Motorola Handheld "Livefire" Channel, or by phone at (845) 938-3930.
 - b. West Point Fire & Emergency Services Division – 845.938.5197
 - c. Range Operations Air Frequency is VHF 126.20.
 - d. KACH ER – 845.938.4004.

5.2 Keller Army Community Hospital (KACH)

Injuries and/or illness requiring immediate emergency support will be immediately reported to the KACH ER, with the location of the range site for patient evacuation by KACH.

5.3 Serious Incident Report (SIR) Requirements

Full and immediate medical attention directed at the patient is the first and foremost priority. As soon as possible, the Range OIC or RSO will contact Range Operations and report the medical injury/accident. Be prepared to provide at a minimum "the Five W's" (Who, What, When, Where and Why).

5.4 Emergency MEDEVAC Flight Requests

The USMA does NOT have an organic MEDEVAC capability to support training complex operations; therefore units and organizations will plan medical evacuation with their organic assets. Stat Flights are for the emergency evacuation of injured personnel by air ambulance. Only the emergency first responder on site, DES dispatcher or KACH medical personnel are authorized to request or terminate a MEDEVAC mission.

To obtain a Stat Flight, contact Range Operations by Motorola Handheld "Livefire" Channel or by telephone at (845)938-3930. After Hours the Military Police Dispatch at (845)938-3333.

9-LINE MEDEVAC		
ANNOUNCED		LINE INFO DESCRIPTION
LINE	LINE INFO	
1		Location of the Pick-Up site by 6-digit grid and any prominent terrain features nearby.
2		Unit Identification
3	A= B=	Number of Patients by evacuation category/precedence A=Urgent (requires immediate evacuation to prevent loss of life B=Priority (serious injury, but <u>NOT</u> life threatening
4	A= B= C= D=	Special equipment needed: A=none B=hoist C=extraction equipment D=ventilator
5	A= B=	Number of patients A=litter B=ambulatory
6		Number and types of wounds, injuries and illnesses
7		Method of marking landing zone/pick-up site A=panels B=pyrotechnic signal C=smoke signal D=none E=other
8		Patient nationality and status A=US military B=US civilian C=other (describe)
9		Terrain description of pick-up site, any site hazards; if none=so state

5.5 Hospital Strip Maps & Directions

5.5.1 Keller Army Community Hospital

Reference Tab 11A, Local Strip Map to Keller Army Community Hospital

5.5.2 St. Luke's Community Cornwall Campus Hospital, Cornwall, NY

Reference Tab 11B, Local Strip Map to Saint Luke's Community Hospital.

6. Range Concept of Operations

Range OIC's should refer to the current publication of DA Pamphlet 350-38, Standards in Training Commission (STRAC). STRAC strategies reflect by unit type each of the specific weapons training strategies and the training doctrine from the appropriate weapon Army Field Manual. This STRAC strategy along with the weapon system FM outlines individual weapon training standards, and reflects tables showing the task and resources required.

6.1 Alternate Pistol Qualification Course (APQC) Course of Fire

NOTE: The alternate Pistol Qualification Course (APQC) can be used when the Combat Pistol Qualification Course is not available due to resource constraints.

6.1.1 APQC Performance Standards

Task: Qualify with the 9mm pistol after satisfactorily completing pre-marksanship training.

Condition: On a 25-meter standard range (when a CPQC range is NOT available), and given a 9mm pistol and the required individual personal protection equipment, engage timed single target exposures at 25-meters using the fundamentals of quick fire under the day, night and NBC firing conditions. The standing, kneeling, crouch and prone firing position are used for day APQC tables I – IV; and only the crouch firing position is used for both NBC and Night Fire tables.

Standard: Successfully and safely engage targets for each of the required tables for day, night and NBC firing conditions.

Firing Rules & Instructions:

1. During the instructional firing, the APQC is fired with a coach or instructor. Coaching is NOT allowed during the record qualification phase.
2. Each firer must observe the location of the target in their assigned lane.
3. The first shot fired in each table must be in the double-action mode.
4. Unused ammunition will be turned in after each table.
5. Unused ammunition will NOT be carried over into later tables.
6. Magazine changes will be as required; NO commands will be given.
7. The firer is allowed one alibis (eight seconds for each round) at the completion of each table.

Scoring: Determined on the number of target hits during the allotted time limit. The firer must achieve at least 24 hits with a minimum score of 80 points to qualify. Target hits are multiplied by the number inside the scoring rings to determine the score. NBC and night firing are on a GO / NO-GO scoring system. Use Alternate Pistol Qualification Scorecard, DA Form 5704-R.

DAY RECORD APQC	NIGHT RECORD	NBC RECORD
EXPERT: 160-200 SHARPSHOOTER: 120-159 MARKSMAN: 80-119 UNQUALIFIED: Below 80	Five Target Hits = GO (Recorded in remarks column)	Seven Target Hits = GO (Recorded in remarks column)

6.1.2 APQC Record Qualification Conduct of Fire

Firers may be issued the total number of rounds required for tables I – IV (40 rounds). Firers load only the rounds required to fire that specific table announced by the Range OIC. The target exposure time is Operationsled by use of a whistle or other audible device.

TOWER COMMANDS. (Insert applicable table number, firing position for the applicable table and the number of rounds/magazines).

TABLE # _____, FIRING POSITION _____, WITH ____ ROUNDS/MAGAZINES
LOAD AND LOCK _____ ROUND MAGAZINE
READY ON THE RIGHT, READY ON THE LEFT, READY ON THE FIRING LINE
UNLOCK YOUR WEAPONS
WATCH YOUR LANE and sound audible device (whistle) to commence fire.

At the end of the prescribed firing time for that applicable table, the tower operator commands:

CEASE FIRE (signaled by use of audible device, i.e.– whistle)
ARE THERE ANY ALIBIS (Alibis are given 8 seconds for each round not fired).
CLEAR ALL WEAPONS (if no alibis)
CLEAR ON THE RIGHT, CLEAR ON THE LEFT, THE FIRING LINE IS NOW CLEAR
FIRERS, PLACE YOUR WEAPONS ON THE STANDS

TABLE I STANDING POSITION.

Firer will receive one 7-round magazine and be allotted 21 seconds to engage the APQC target.

TABLE II – KNEELING POSITION.

Firer will receive one 6-round and one 7-round magazine. Within 45 seconds, starting from a standing position, assume a good kneeling position, engage the APQC target with 6 rounds, perform a rapid magazine exchange and continue to engage the APQC target with the 7-round magazine.

TABLE III – CROUCH POSITON.

Firer will receive two 5-round magazines Within 35 seconds, starting from a standing position, assume a good crouch position, engage the APQC target with one 5-round magazine, perform a rapid magazine exchange, and continue to engage the target with the second 5-round magazine.

TABLE IV – PRONE POSITION.

Firer will receive two 5-round magazines. Within 35 seconds, starting from a standing position, assume a good prone position, engage the target with one 5-round magazine, perform a rapid magazine exchange, and continue to engage the target with the second 5-round magazine.

NBC FIRE – CROUCH POSITION

Firer will wear protective mask, and fire from the crouch position. Firers receive one 15-round magazine, and one 5-round magazine. Within 3 minutes, 38 seconds, starting from a standing position, assume a good crouch firing position and engage the APQC target, perform a rapid magazine exchange, and continue to engage the target with the second magazine. 10 seconds is allotted for each round and 8 seconds for the magazine exchange. Scoring is a GO / NO-GO. To receive a GO firer must have seven hits.

NIGHT FIRE (Unassisted) – CROUCH POSITION

Firer will receive two 15-round magazines. Within 3 minutes 38 seconds, starting from a standing position, assume a good crouch firing position and engage the APQC target, perform a rapid magazine exchange, and continue to engage the target with the second magazine. 10 seconds is allotted for each round and 8 seconds for the magazine exchange. Scoring is a GO / NO-GO. To receive a GO firer must have five hits.

6.2 M16/M4 25-Meter Zero & Alternate Course C

6.2.1 M16/M4 25-Meter Zero Performance Standards

Task: Reinforce Basic Rifle Marksmanship training by successfully zeroing individual assigned M16/M4 rifle, while adjusting confirmed 3-round shot groups.

Purpose: To align the sights with the weapon's barrel using standard ammunition. When zeroing is accomplished correctly, the point of aim and point of impact are the same at a given range (250 meters for the M16A1, 300 meters for the M16A2/A3/A4 and M4 series weapons). This sight setting provides the highest hit probability for most combat targets with minimum adjustment to the point of aim.

Method: On a standard 25-meter range, with appropriate zero target, your individual assigned M16/M4 weapon, from the prone supported firing position with 18 rounds of 5.56mm ammunition and while wearing assigned individual personal protection equipment.

End state: Two consecutive 3-round shot groups are fired with 5 of 6 rounds landing within the 4-centimeter circle.

Firing Rules & Instructions.

1. The rear sight is on the proper setting (zero; M16A2/3=8/3+1; M16A4=6/3+2; M4=6/3).
2. The rear sight aperture is set on 300+1, not 800+1.
3. The M16A1's rear sight is set on the aperture marked L.
4. The small aperture is being used.
5. Proper and accurate shot group marking is enforced, and the firers name is clearly marked on target.
6. The proper zero target is used for the appropriate rifle/weapon system (Reference para 2.6).
7. Coaches analyze the firer's application of the four fundamentals.
8. The majority of the round must be inside of the circle to be counted.
9. Two consecutive 3-round shot groups are shot with 5 of 6 rounds in the 4-centimeter circle.

6.2.2 M16/M4 25-Meter Zero Conduct of Fire

To properly conduct a 25-meter zero range, perform the following actions:

1. Divide the unit into firing orders. The first order fires, while the second order coaches.
2. Reserve firing points to conduct remedial and corrective instruction.
3. Provide sandbags at each firing point to accommodate supported firing position.
4. Ensure the correct sight settings and proper zero targets are being used.
5. Range OIC uses standard and proper range commands throughout each 3-round shot group.
6. The soldier fires a three- round shot group at the zero target from a prone supported firing position using the same point of aim.
7. The firing line is cleared, and moves downrange to examine the shot group for fundamental errors, triangulates the shot group, and puts the number "1" in the center of the shot group. (Note: if the initial shot group is not on the target, the weapon should be mechanically zeroed before the weapon is fired again).
8. The firer returns to the firing line and fires a second shot group.
9. The firing line is cleared, and the soldier moves down range to examine the second shot group, triangulate, and mark the center of the shot group with the number "2".
10. The soldier groups the two shot groups and marks the center of the two shot groups with an "X".
11. If the two shot groups fall within a 4-centimeter circle, the firer determines the sight adjustments needed to make, identifies the horizontal and vertical line closest to the "X", and reads the 25-meters zero target to determine the proper sight adjustments. If the two shot groups do not fall within a 4-centimeter circle, the firer continues grouping.

12. The firer annotates any sight adjustments that need to be made to the weapon on the 25-meter zero target and ensures their name is on the target.
13. If five out of six rounds fell within the 4-centimeter circle, the firer is zeroed and can be removed from the firing line. If not, the firer returns to the firing line and makes sight adjustments
14. Steps 5-12 are repeated until the firer places five out of six consecutive rounds inside the 4-centimeter circle. If the firer is NOT zeroed within the 18-rounds allotted, they should be removed from the firing line and given remedial training before attempting to zero again.

NOTE: Once weapon is zeroed firer must place the 300 meter zero on the rifle by rotating the elevation knob one click counterclockwise. The 8/3 (300 meters mark on the elevation knob should now be aligned with the index mark on the left side of the sight).

6.2.3 M16/M4 Alternate Course Practice & Record Qualification Performance Standards

Task: Successfully qualifying using the Alternate Course C qualification course of fire (Note: The alternate course will be used ONLY when a standard record fire range is NOT available due to resource constraints).

Purpose: Reinforce all phases of Basic Rifle Marksmanship (BRM) training and to allow soldiers to practice and refine critical marksmanship skills by measuring the soldier's complete understanding of BRM. The Alternate course can be fired for both practice and record qualification.

Method: On a standard 25-meter range, using the 25-meter scaled silhouette timed-fire target, your individual assigned M16/M4 weapon and while wearing assigned and required individual personal protection equipment.

End state: Successfully engage scaled targets during a timed exercise and meet the scoring requirements to qualify with individual assigned rifle/weapon.

Scoring: Determined on the number of target hits during the allotted time limit. The firer must achieve a minimum score of 23 target hits in order to qualify. Use Alternate Course Record Qualification Scorecard, DA Form 5790-R. Qualification ratings for the Alternate Course are:

EXPERT	SHARPSHOOTER	MARKSMAN	UNQUALIFIED
38 – 40 Target Hits	33 – 37 Target Hits	26 – 32 Target Hits	25 & Below Target Hits

Firing Rules & Instructions.

1. Ensure proper rear sight setting (M16A1=the unmarked aperture, short-range).
2. Ensure the proper rear sight setting to zero (M16A2/3=8/3, M16A4=6/3, M4=6/3).
3. Ensure the rear sight aperture is set on 300, not 800, and that the small aperture is being used.
4. Firers should engage scaled targets on the sheet left to right, from the nearest to the farthest away target (50m, 100m left, 100m center, 100m right, 150m left, 150m right, 200m left, 200m right, 250m and 300m last). This "guideline" for target engagement is intended to ensure firers do not forget which targets they engaged during qualification. It also alleviates the possibility of shooting each target more than the prescribed amount of times.
5. The time between each firing position is not specified, but enough time should be allotted to allow the firer to properly assume a good firing position between the three tables.

6.2.4 M16/M4 Alternate Course Conduct of Fire

Firers may be issued the total number of rounds required for tables I – III (40 rounds). Firers load only the rounds required to fire that specific table announced by the Range OIC. The target exposure time is Operationsled by use of a whistle or other audible device.

TOWER COMMANDS. (Insert applicable table number, firing position for the applicable table and the number of rounds/magazines).

TABLE # _____, FIRING POSITION _____, WITH _____ ROUNDS/MAGAZINES
LOAD AND LOCK _____ ROUND MAGAZINE
READY ON THE RIGHT, READY ON THE LEFT, READY ON THE FIRING LINE
UNLOCK, AND PLACE YOUR WEAPON ON SEMI
WATCH YOUR LANE and sound audible device (whistle) to commence fire.

At the end of the prescribed firing time for that applicable table, the tower operator commands:

CEASE FIRE (signaled by use of audible device, i.e.– whistle)
ARE THERE ANY ALIBIS (Alibis are given 6 seconds for each round not fired).
CLEAR ALL WEAPONS AND REMOVE YOUR MAGAZINE (if no alibis)
CLEAR ON THE RIGHT, CLEAR ON THE LEFT, THE FIRING LINE IS NOW CLEAR
FIRERS, PLACE YOUR WEAPONS ON SAFE, AND ON SANDBAG, CHAMBER UP
FIRERS MOVE DOWN RANGE TO SCORE YOUR TABLE
RETURN TO THE FIRING LINE BEHIND YOU WEAPON (DO NOT TOUCH WEAPON).

TABLE I, PRONE SUPPORTED FIRING POSITION.

The firer is given one 20-round magazine. Firer engages each of the ten silhouettes twice. NO more than two hits for each silhouette will be scored for this table. Firer has 120 seconds to complete this table.

TABLE II, PRONE UNSUPPORTED FIRING POSITON.

The firer is given one 10-round magazine. Firer engages each of the ten silhouettes once. NO more than one hit for each target will be scored for this table. Firer has 60 seconds to complete this table.

TABLE III, KNEELING UNSUPPORTED FIRING POSITION.

The firer is given one 10-round magazine. Firer engages ONLY two rounds for each 50 and 100 meter silhouette and ONLY one round for each 150-meter silhouette. Engage only five silhouettes. NO more than two hits for each target will be scored for this table.

An allotted alibi is a malfunction of the rifle or ammunition – it is NOT associated with firer error. Rounds not expended during the allotted time do not constitute an alibi and are counted as misses. Cross fires are not allowable alibis for the cross-firing soldier. The recipient of the cross-fired rounds refires the table. The cross-firer is awarded misses for those shots on the wrong target, and he may be allowed to refire the course. Regardless of his total hits during refire, the cross-firer can only be rated as a marksman with a score of 26.

6.2.5 Chemical, Biological, Radiological & Nuclear (CBRN) Alternate Course Conduct of Fire

The CBRN alternate fire course uses the 25-meter scaled silhouette timed-fire target. This exercise is conducted in the same manner as the 25-meter alternate course record fire. Use scored card DA Form 5790-R.

Firing Rules & Instructions.

1. Each firer should be in MOPP level 4, but a minimum will wear their protective mask and gloves.

2. Each firer is issued 20 rounds of 5.56mm ammunition in two 10-round magazines.
3. Each firer will engage each of the ten scaled silhouette targets with two rounds, firing from the prone supported position or the kneeling position (commander's discretion).
4. Each firer must achieve 11 target hits out of 20 shots.
5. This is a Go / NO-GO exercise.

NOTE: CBRN firing is considered a component of the Advanced Rifle – Short Range Marksmanship training program, but due to the firer firing from a static position, this course of fire does not require a Live Fire Support Package (LFSP).

6.2.6 Unassisted Night Fire Familiarization Conduct of Fire

Unassisted night fire develops the firers confidence in their ability to hit targets when they cannot see through the weapons sights and do NOT have night vision capability. This exercise is conducted using the F-type silhouette target at 50 meters. Use scorecard DA Form 5790-R.

Firing Rules & Instructions.

1. The M16A2/3/4 or M4 rifle's rear sight is set on the 0-2 aperture.
2. The M16A1s rear sight is set on the unmarked aperture.
3. Each firer is issued two 15-round magazines, with each magazine loaded with 10 rounds of ball and 5 rounds of tracer ammunition in each magazine (loaded in sequence of 2 ball, then 1 tracer).
4. The firer engages a 50-meter F-type silhouette target from the prone supported firing position with the first magazine.
5. The firer engages a 50-meter F-type silhouette target from the prone unsupported or kneeling position (commander's discretion) with the second magazine.
6. Each firer must achieve 7 target hits out of 30 target exposures.
7. This is a GO / NO-GO exercise.

NOTE: Unassisted night firing is considered a component of the Advanced Rifle – Short Range Marksmanship training program, but due to the firer firing from a static position, this course of fire does not require a Live Fire Support Package (LFSP).

6.3 Advanced Rifle-Short Range Marksmanship (SRM) Training

The procedures and techniques for implementing an Advanced Rifle Marksmanship (ARM) training program are based on all soldiers understanding common firing principles, being proficient marksmen, and being confident in applying their firing skills in combat. Advanced Rifle Marksmanship (ARM) instruction and training concentrates on the advanced techniques and procedures required to participate in collective live fire training exercises and scenarios.

Advanced Rifle Marksmanship (ARM) training involves advanced firing positions, combat firing techniques, Chemical, Biological, Radiological & Nuclear (CBRN) firing, unassisted night fire, moving while engaging targets, target discrimination, and Short Range Marksmanship (SRM) instruction and training.

NOTE: Live-Fire Standardization Package (LFSP). Reference West Point Reg. 350-11. A LFSP is required 14 days in advance whenever a unit conducts any training that includes movement of the firer on the range, which includes engaging in any type of steel target training, Stress Fire, Close Quarters Battle and any Advanced Rifle-Short Range Marksmanship training program.

7.3.1 Advanced Rifle-Short-Range Marksmanship (SRM) Training

SRM training allows for quick and effective target engagements at ranges less than 50 meters, normally associated with Urban Operations. The use of dry-fire and blank-fire drills **WILL** always be conducted

prior to any live-fire SRM event. Advanced Rifle-SRM instruction and live fire training consists of six phases that are further outlined below.

NOTE: Phase I and Phase II SRM training are sequential and pre-requisite training required prior to conducting any of the other SRM phases. All phases should begin with a review of the principles of safe weapon handling. **THE FIRST PRIORITY IN ADVANCED RIFLE SRM IS ALWAYS SAFETY!**

6.3.1.1 Phase I – SRM Fundamental Training

(Reference FM 3-22.9 w/change 1, dtd 10 Feb 11, pages 7-42 thru 7-47).

SRM Phase I fundamental training should consist of the following:

1. Firing stance, weapon ready positions, and movement techniques.
2. Aiming techniques.
3. Point of Aim techniques.
4. Trigger manipulation techniques.

6.3.1.2 Phase II – Preliminary SRM Instructional Training

(Reference FM 3-22.9, w/change 1, dtd 10 Feb 11, pages 7-47 thru 7-50).

The following table outlines the minimum task that should be conducted.

TASK	EXPLANATION
Weapon ready positions and firing stance	Ensure that each soldier understand and can properly carry their weapon.
Magazine exchange drills	Perform magazine exchange drills using one of the two methods: Parallel or L-shaped method. Ensure to configure personal LBE to allow for easiest access for magazine change. The time limit to perform any of the magazine changing drills is 8 seconds.
Moving with a weapon	Ensure that the firer can walk, run, and turn left & right, and to the rear, as well as move from the standing to kneeling position and the kneeling back to the standing firing position.
Weapon malfunction drills	Ensure that the firer instinctively drops to the kneeling firing position, clears a weapons malfunction using SPORTS, and continues to engage targets. This drill can be performed by issuing each firer a magazine loaded with 6-8 blank rounds of ammunition with one of those being an expended blank round.
Target engagement drills	Ensure firer can move from the weapon ready position to the firing stance, emphasizing speed and precision. Ensure to observe trigger finger placement to ensure the finger is outside the trigger well and that the selector switch remains on SAFE until the weapon is raised to the firing position.

6.3.1.3 Phase III – Reflexive Fire Training

(Reference FM 3-22.9, w/change 1, dtd 10 Feb 11, pages 7-51 thru 7-53).

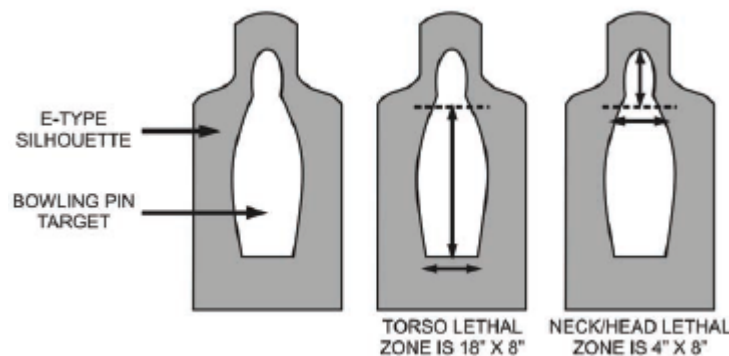
Reflexive fire training involves the practical application of all four of the fundamentals of SRM.

Firing Rules & Instructions.

1. On a 25-meter range, make identification marks at the 5-, 10-, 15- and 25-meter distance.
2. Each lane should be marked in a way that prevents cross firing between lanes.

3. A lane safety coach is assigned to each lane to ensure the safe conduct of firing, as well as to observe and evaluate the firer's performance.
4. All firing cues are given by the range tower or line safety, after firer moves to the required range distance, and then announced by drill #, applicable firing position, number of rounds and method.
5. All weapons will be DOUBLE-CHECKED by TWO separate range safeties to ensure the weapon is clear between the dry, blank and live fire iterations.
6. The weapon selector switch will ALWAYS be switched to SEMI and returned to SAFE after each method of engagement is conducted (single shot or Operations led pair).
7. All rounds must impact on the E-type silhouette. Target hits are defined as being in the lethal zone (bowling pin portion of the E-type silhouette target).
8. Firers are evaluated on a GO / NO-GO basis, and there is no time standards. A NO-GO is defined as the firer failing to keep the weapon on SAFE before acquiring the target, and after target engagement.
9. Firers are issued two 16-round magazines, one for each table. Each table is fired in dry and blank prior to live fire.

REFLEXIVE FIRE – STATIONARY TABLE					
DRILL #	POSITION	ROUNDS	DISTANCE (Meters)	METHOD	LETHAL ZONE HIT STANDARD
1	Straight Ahead	4	25	Single Shot	3
2	Straight Ahead	4	10	Single Shot	3
3	Straight Ahead	4	25	Operationsled Pair	3
4	Straight Ahead	4	10	Operationsled Pair	3
REFLEXIVE FIRE – MOVING TABLE					
DRILL #	POSITION	ROUNDS	DISTANCE (Meters)	METHOD	LETHAL ZONE HIT STANDARD
5	Face Left, Turn Right	4	25	Operationsled Pair	3
6	Face Right, Turn Left	4	25	Operationsled Pair	3
7	Straight Ahead Walking	4	10, start at 15	Operationsled Pair	3
8	Straight Ahead	4	5	Operationsled Pair	3



6.3.1.4 Phase IV – Target Discrimination Training

(Reference FM 3-22.9, w/change 1, dtd 10 Feb 11, pages 7-53 thru 7-55).

Target discrimination is the act of distinguishing between threat and non-threat targets. It is essential that target discrimination training be aimed at instilling fire Operations and discipline.

Target Discrimination Targets. Various target types may be used, two of the most common are:

1. Two or more E-type silhouettes with bowling pins painted on each side of the silhouette (i.e. brown side and green side).
2. Multiple E-type silhouettes with different painted shapes (i.e. squares, triangles and circles).

Firing Rules & Instructions.

1. On a 25-meter range, each lane should be at least 5 meters wide, and marked at 10 and 25 meters.
2. Each lane should be marked in a way that prevents cross firing between lanes.
3. A lane safety coach is assigned to each lane to ensure the safe conduct of firing, as well as to observe and evaluate the firer's performance.
4. All firing cues are given by the range tower or line safety.
5. All weapons will be DOUBLE-CHECKED by TWO separate range safeties to ensure the weapon is clear between the dry, blank and live fire iterations.
6. The weapon selector switch will ALWAYS be switched to SEMI and returned to SAFE after each target engagement is conducted (single shot or Operations led pair).
7. All rounds must impact on the E-type silhouette.
8. Firers are evaluated on a GO / NO-GO basis, and there is no time standards. A NO-GO is defined as the firer failing to keep the weapon on SAFE before acquiring the target, and after target engagement.
9. The READY position is defined as the weapon and the firer in a "LOW READY" position.
10. Firing cues from the tower provide the firers with a target description; then on the command "READY" the firer begins to visually scan for the announced target description; on the command "UP" (or whistle blow), the firer engages the appropriate target.
11. Firers are issued one 16-round magazine. The table is fired in dry and blank prior to live-fire.

TARGET DISCRIMINATION FIRE TABLE - STATIONARY					
DRILL #	POSITION	ROUNDS	DISTANCE (Meters)	METHOD	LETHAL ZONE HIT STANDARD
1	Straight Ahead	4	25	Single Shot	3
2	Straight Ahead	4	10	Single Shot	3
3	Straight Ahead	4	25	Operations led Pair	3
4	Straight Ahead	4	10	Operations led Pair	3

6.3.1.5 Phase V – SRM Practice & Record Qualification

(Reference FM 3-22.9, w/change 1, dtd 10 Feb 11, pages 7-55 thru 7-56).

SRM Practice & Record Fire Target. Two or more E-type silhouettes with bowling pins painted on each side of the silhouette (i.e. brown side and green side).

Firing Rules & Instructions.

1. On a 25-meter range, each lane should be at least 5 meters wide, and marked at 5-, 10-, 15- and 25 meters.
2. Each lane should be marked in a way that prevents cross firing between lanes.
3. A lane safety coach is assigned to each lane to ensure the safe conduct of firing, as well as to observe and evaluate the firer's performance.
4. All firing cues are given by the range tower or line safety.
5. All weapons will be DOUBLE-CHECKED by TWO separate range safeties to ensure the weapon is clear between the dry, blank and live fire iterations.

6. The weapon selector switch will ALWAYS be switched to SEMI and returned to SAFE after each target engagement is conducted.
7. All rounds must impact on the E-type silhouette. Firers are evaluated on a GO / NO-GO basis. There is a 3-second target engagement time standard, from the command "UP". All Target engagement methods are conducted as a "Operations led pair".
8. A NO-GO is defined as the firer failing to keep the weapon on SAFE before acquiring the target, and after target engagement. To receive a GO, the firer must score 16 target hits. A hit is defined as a round that impacts within the lethal zone.
9. The READY position is defined as the weapon and the firer in a "LOW READY" position.
10. Firing cues from the tower provide the firers with the command "READY", then the firer begins to visually scan for the target description announced; on the command "UP" (or whistle blow), the firer engages the appropriate target.
11. Firers are issued one 20-round magazine. The table is fired in dry and blank prior to live-fire.

SRM PRACTICE & RECORD QUALIFICATION TABLE		
POSITION	# ROUNDS FIRED METHOD OF ENGAGEMENT	TARGET DISTANCE
Straight Ahead	2 Rounds Operationsled Pair	5 Meters
Face Right, Turn Left	2 Rounds Operationsled Pair	10 Meters
Face Left, Turn Right	2 Rounds Operationsled Pair	10 Meters
Walk Straight	2 Rounds Operationsled Pair	5 Meters, Start at 10 Meters
Walk Straight	2 Rounds Operationsled Pair	10 Meters, Start at 15 Meters
Run, Stop and Shoot	2 Rounds Operationsled Pair	10 Meters, Start at 20 Meters
Straight Ahead	2 Rounds Operationsled Pair	25 Meters
Run, Stop, Kneel and Shoot	2 Rounds Operationsled Pair	15 Meters, Start at 25 Meters
Walk Laterally Right	2 Rounds Operationsled Pair	10 Meters
Walk Laterally Left	2 Rounds Operationsled Pair	10 Meters

6.3.1.6 Phase VI – Burst and/or Barricade Transition Firing

(Reference FM 3-22.9, w/change 1, dtd 10 Feb 11, pages 7-56 thru 7-57).

Not Supported on Range 4, a standard qualification range is required with targetry from 50 to 300 meters.

7. Radio Procedures

*** NOTE:

If you are using Range 4 – **ONLY** call in "Range 4"

If you are using Range 4A – **ONLY** call in "Range 4A"

If you are using both – Call in **BOTH** "Ranges 4 and 4A"

7.1 Requesting a Hot Status

RANGE: RANGE OPERATIONS, THIS IS RANGE 4 (4A) OVER

RANGE OPERATIONS: RANGE 4 (4A), THIS IS RANGE OPERATIONS. GO AHEAD, OVER.

RANGE: RANGE OPERATIONS, THIS IS RANGE 4 (4A). REQUEST A HOT TIME, OVER.

RANGE OPERATIONS: RANGE 4 (4A), THIS IS RANGE OPERATIONS, DO YOU PHYSICALLY HAVE ON SITE REQUIRED MEDICAL SUPPORT WITH EQUIPMENT, RANGE SAFETY SOP BOOK, RED RANGE FLAG FLYING AND GATE GUARD WITH COMMO, OVER.

RANGE: RANGE OPERATIONS, THIS IS RANGE 4 (4A), YES, OVER.

RANGE OPERATIONS: RANGE 4 (4A), THIS IS RANGE OPERATIONS. I GIVE YOU A HOT TIME OF _____ HOURS. MY INITIALS ARE _____. CONFIRM HOT TIME AND SEND YOUR RANGE OIC INITIALS, OVER.

RANGE: RANGE OPERATIONS, THIS IS RANGE 4 (4A). I CONFIRM HOT TIME OF _____. RANGE OIC INITIALS ARE _____, OVER.

RANGE OPERATIONS: RANGE 4 (4A), THIS IS RANGE OPERATIONS. NOTIFY RANGE OPERATIONS WHEN FIRST ROUND IS FIRED DOWN RANGE. CONDUCT RADIO CHECKS WITH RANGE OPERATIONS HOURLY AT THE TOP OF THE HOUR, YOUR FIRST RADIO CHECK IS DUE AT _____. RANGE OPERATIONS OUT.

7.2 Reporting First Round Fired Down Range

RANGE: RANGE OPERATIONS, THIS IS RANGE 4 (4A), OVER.

RANGE OPERATIONS: RANGE 4 (4A), THIS IS RANGE OPERATIONS. GO AHEAD, OVER.

RANGE: RANGE OPERATIONS, THIS IS RANGE 4 (4A). FIRST ROUND FIRED DOWN RANGE, OVER.

RANGE OPERATIONS: RANGE 4 (4A), THIS IS RANGE OPERATIONS. I COPY FIRST ROUND FIRED DOWN RANGE AT _____, RANGE OPERATIONS OUT.

7.3 Reporting Last Round Fired Down Range

RANGE: RANGE OPERATIONS, THIS IS RANGE 4 (4A), OVER.

RANGE OPERATIONS: RANGE 4 (4A), THIS IS RANGE OPERATIONS. GO AHEAD, OVER.

RANGE: RANGE OPERATIONS, THIS IS RANGE 4 (4A). LAST ROUND FIRED DOWN RANGE, OVER.

RANGE OPERATIONS: RANGE 4 (4A), THIS IS RANGE OPERATIONS. I COPY LAST ROUND FIRED DOWN RANGE AT _____, RANGE OPERATIONS OUT.

7.4 Requesting a Cold Status

RANGE: RANGE OPERATIONS, THIS IS RANGE 4 (4A), OVER.

RANGE OPERATIONS: RANGE 4 (4A), THIS IS RANGE OPERATIONS. GO AHEAD, OVER.

RANGE: RANGE OPERATIONS, THIS IS RANGE 4 (4A). REQUEST A COLD TIME, OVER.

RANGE OPERATIONS: RANGE 4 (4A), THIS IS RANGE OPERATIONS. I GIVE YOU A COLD TIME OF _____. MY INITIALS ARE _____. CONFIRM COLD TIME, SEND YOU RANGE OIC INITIALS, YOUR AMMUNITION QUANTITY EXPENDED BY TYPE/DODAC AND THE NUMBER OF PERSONNEL TRAINED, OVER.

RANGE: RANGE OPERATIONS, THIS IS RANGE 4 (4A). I CONFIRM COLD TIME OF _____. RANGE OIC INITIALS ARE _____. _____ (#) ROUNDS OF _____ (DODAC) EXPENDED, WITH _____ (#) PERSONNEL TRAINED, OVER.

RANGE OPERATIONS: RANGE 4 (4A), THIS IS RANGE OPERATIONS, ROGER, OUT.

7.5 Requesting a Cease Fire Time

RANGE: RANGE OPERATIONS, THIS IS RANGE 4 (4A), OVER.

RANGE OPERATIONS: RANGE 4 (4A), THIS IS RANGE OPERATIONS. GO AHEAD, OVER.

RANGE: THIS IS RANGE 4, REQUEST A CEASE FIRE TIME, OVER.

RANGE OPERATIONS: RANGE 4 (4A), THIS IS RANGE OPERATIONS. I GIVE YOU A CEASE FIRE TIME OF _____ HOURS. MY INITIALS ARE _____. CONFIRM CEASE FIRE / ADMIN COLD TIME AND PROVIDE YOUR RANGE OIC INITIALS, OVER.

RANGE: RANGE OPERATIONS, THIS IS RANGE 4 (4A). I CONFIRM CEASE FIRE TIME OF _____. MY RANGE OIC INITIALS ARE _____, OVER.

RANGE OPERATIONS: RANGE 4 (4A), THIS IS RANGE OPERATIONS, ROGER, OUT.

7.6 Requesting to Lift Cease Fire Time

RANGE: RANGE OPERATIONS, THIS IS RANGE 4 (4A), OVER.

RANGE OPERATIONS: RANGE 4 (4A), THIS IS RANGE OPERATIONS. GO AHEAD, OVER.

RANGE: RANGE OPERATIONS, THIS IS RANGE 4 (4A). REQUEST TO LIFE CEASE FIRE TIME AND RETURN TO A HOT STATUS, OVER.

RANGE OPERATIONS: RANGE 4 (4A), THIS IS RANGE OPERATIONS. I LIFT YOUR CEASE FIRE TIME STATUS AND PLACE YOU BACK INTO A HOT STATUS AT _____ HOURS. MY INITIALS ARE _____. CONFIRM RETURN TO HOT STATUS AND PROVIDE RANGE OIC INITIALS, OVER.

RANGE: RANGE OPERATIONS, THIS IS RANGE 4 (4A). I CONFIRM RETURN TO HOT STATUS TIME OF _____. MY RANGE OIC INITIALS ARE _____, OVER.

RANGE OPERATIONS: RANGE 4 (4A), THIS IS RANGE OPERATIONS, ROGER, OUT.

7.7 Change of OIC / RSO.

RANGE: RANGE OPERATIONS, THIS IS RANGE 4 (4A), OVER.

RANGE OPERATIONS: RANGE 4 (4A), THIS IS RANGE OPERATIONS. GO AHEAD, OVER.

RANGE: RANGE OPERATIONS, THIS IS RANGE 4 (4A). REQUEST A CHANGE OF OIC (or RSO), OVER.

RANGE OPERATIONS: RANGE 4 (4A) THIS IS RANGE OPERATIONS. SEND THE LAST NAME AND THE INITIALS OF THE NEW RANGE OIC (or RSO), WITH YOUR INITIALS, OVER.

RANGE: RANGE OPERATIONS, THIS IS RANGE 4 (4A). NEW OIC / RSO LAST NAME IS _____, NEW OIC / RSO INITIALS ARE _____. MY INITIALS ARE _____, OVER.

RANGE OPERATIONS: RANGE 4 (4A), THIS IS RANGE OPERATIONS. ROGER, OUT.

7.8 Requesting a Radio Check (Hourly at the Top of the Hour)

RANGE: RANGE OPERATIONS, THIS IS RANGE 4 (4A). RADIO CHECK, OVER.

RANGE OPERATIONS: RANGE 4 (4A), THIS IS RANGE OPERATIONS, ROGER RADIO CHECK, OUT.

8. Range Safety Brief

All firers will be briefed on the following items. This general safety brief is not all inclusive and requires the Range OIC / RSO to include commander's guidance, and/or any unit specific or other situational dependent areas of concern.

NOTE: Insert range, weapon and course of fire specifics that are required and/or applicable.

1. Identify the Range Officer in Charge (OIC) and the Range Safety Officer (RSO) at a minimum.
2. Identify the Location of Range Staff Cadre:
 - a) Range OIC and RSO
 - b) Assistant Range Safeties
 - c) Medic & the Evacuation Vehicle
 - d) Ammo Issue Point/Breakdown Building and CL V NCO
 - e) Others as required
3. Prescribed uniforms and personal protection requirements (hearing, eye, helmet and IBA as applicable and required) while on the range.
4. Course of fire and standards for the weapon system being fired.
5. Locations: Break/Smoking Areas, latrines, mess area, firing line and/or firing points, clearing barrels, parking and bleacher site. Also include any off limit or restricted areas.
6. Ammunition holding area/ issue point procedures & security.
7. Left, right limits, fire and no fire zones.
8. Procedures for Medical Emergency.
9. Procedures for range fires.
10. Severe weather plan, environmental requirements, issues and concerns.
11. NO food or beverages on firing line unless directed by OIC except water.
12. Leave all WILDLIFE at this range alone.
13. ALL VEHICLES on this Range will have a GROUND GUIDE.
14. Movement on firing line is directed by OIC.
15. NO pushing, NO shoving or horseplay at ANY time.
16. Unit is responsible for a personnel & vehicle shakedown for ammo & brass. No one will leave the range until this has been completed.
17. If you observe ANY UNSAFE situation, personnel, vehicles, aircraft, or wildlife down range call & indicate "CEASE FIRE" IMMEDIATELY everyone on the firing line echo "CEASE FIRE". Place all weapons on safe until the OIC or RSO have investigated the situation and declared it safe to resume training.
18. While on this Range you will take ALL COMMANDS FROM THE TOWER while on the firing line. Load weapon when instructed to do so by the tower or lane safety.
18. Weapon will remain in the SAFE POSITION unless otherwise specified by the ROIC.
19. No jumping into fox holes, off walls or firing tables. Inspect the firing position prior to entering for poisonous or harmful animals or insects.
20. Weapon malfunction apply immediate action to correct problem IAW appropriate FM if this fails apply remedial action, if this fails notify lane safety who will notify RSO to assist in correcting the malfunction.
21. ALL WEAPONS WILL BE CLEARED PRIOR TO, AFTER AND BEFORE ANY WEAPON IS MOVED FROM THE FIRING LINE. Once cleared off firing line, turn in all ammunition and expended brass to AMMO POINT.
22. When not on the firing line the bolt will be locked to the rear and the weapon on safe. Consider the weapon loaded at all times never point it at anyone.
23. Shooters will not hand a weapon to another person until it has been properly unloaded/cleared and the bolt has been locked to the rear, unless instructed to do otherwise by Range Safety.
24. MUZZLE AWARENESS:
 - a) Maintain positive Operations of your weapon at all times, LEVEL & DOWN RANGE!
 - b) Keep finger OUTSIDE trigger guard until directed to engage &/or fire
 - c) Be sure of YOUR target!
 - d) Ensure soldiers fire weapon at designated targets only.

9. Risk Management & Mitigation

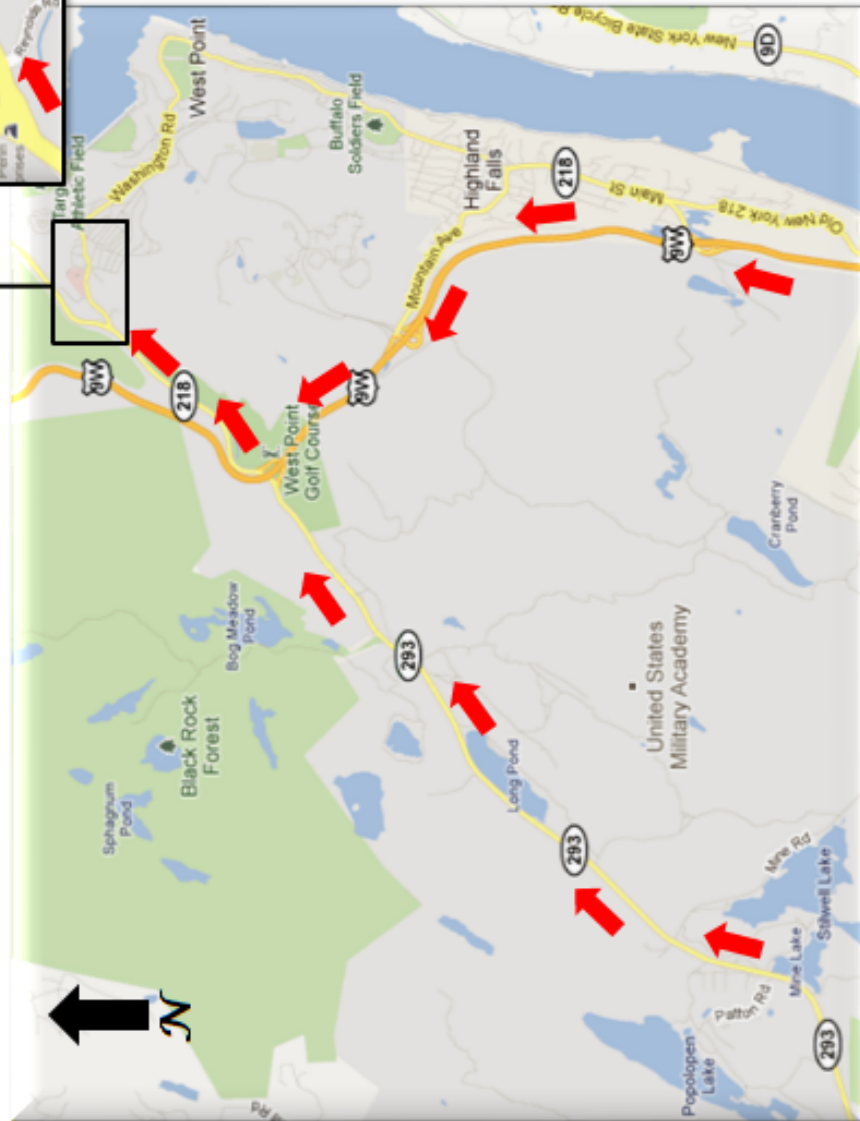
Range OIC will review, add and update DA Form 2977, Deliberate Risk Assessment Worksheet.

10. Reference Information, Reports & Forms

INDEX

TAB	NAME
11A	Local Strip Map to Keller Army Community Hospital
11B	Local Strip Map to Saint Luke's Cornwall Community Hospital
11C	Open

**LOCAL STRIP MAP TO
KELLER ARMY COMMUNITY HOSPITAL
Phone #: (845) 938-4004**



DIRECTIONS

- North on Route 293 or 9W.
- Exit onto Route 218 N (approx. 1.2 miles to Washington Road Gate).
- Enter Installation via Washington Road Gate.
- Keller Army Community Hospital is on the left (approx. 3/10 miles from Washington Road gate).

Tab 11A – Strip Map – Keller Army Community Hospital

**LOCAL STRIP MAP TO
ST. LUKES WOUND CARE CENTER
&
ST. LUKES CORNWALL HOSPITAL
Phone #: (845) 458-4512**



DIRECTIONS

- North on Route 293 or 9W.
- Continue North on 9W to Cornwall.
- Exit 9W onto Quaker Ave exit.
- Turn left onto Elm Street.

Tab 11B – Strip Map to St. Luke’s Cornwall Hospital