

Identifier: <b>DPTM-SOP-R11</b>	Revision: <b>0.0</b>	Effective Date: <b>17 Jan 18</b>
------------------------------------	-------------------------	-------------------------------------

Document Approval Date:	<b>17 Jan 18</b>
-------------------------	------------------

Proponent: USAG-WP, Dir Plans, Tng, Mob & Security
--



# **U.S. Army Garrison-West Point DPTMS – Range Operations Policy & Procedures**

## **Standard Operating Procedure Range 11 (*Normandy*) M16/M4 Record Fire Range**



Department of the Army  
U.S. Army Garrison West Point  
United States Military Academy  
West Point, New York 10996-5000

## Document History

### Document Location

All hard copies will be located at Building 1403 Range Operations Fire Desk. Also, electronic copies may be retrieved via DPTMS website (Training Link), or upon request.

### Revision History

Date of this revision: 17 Jan 18	Date of next revision: 17 Jan 19
----------------------------------	----------------------------------

Revision Number	Revision Date	Summary of Changes	Author
1	3/12/14	Minor Grammar Changes	Lake
2	2/2/15	Minor Changes	Lake
3	1/7/16	Minor Changes	Lake
4	1/17/17	Minor Changes	Lake

### Approvals

This document requires the following approvals:

Name	Title
	USAG-WP, Range Manager
	USAG-WP, Chief of Training
	USAG-WP, Director of Plans, Training, Mobilization & Security

### Distribution Formula

This document has been distributed to:

Office	Name Title
Scheduled User	Issued Hard-bound Binder copy during use of range/facility
USAG-WP	Range Operations-Office

## Table of Contents

1.	General Information.....	5
1.1	Purpose.....	5
1.2	Applicability .....	5
1.3	Responsibility.....	5
1.4	References.....	5
1.5	Suggested Improvements .....	5
2.	Range Description & Characteristics .....	6
2.1	Range Description & Definitions.....	6
2.2	Range Location.....	6
2.3	Standard Supported Courses of Fire .....	6
2.4	Authorized Weapons & Ammunition .....	7
2.5	Range Specific Safety Measures .....	7
2.6	Range Targetry .....	7
2.7	Range Support Facilities .....	7
2.8	Authorized Parking.....	8
2.9	Communications .....	8
3.	Range Safety & Security Procedures .....	9
3.1	Individual Personal Protection Equipment (PPE).....	9
3.2	Weapons Handling.....	9
3.3	Malfunction & Misfire Procedures.....	9
3.4	Ammunition Handling & Storage .....	10
3.5	Army Range Safety Memorandums/Messages (ARSMMs) .....	10
3.6	Unexploded Ordnance (UXO) and Reporting of Duds .....	10
3.7	Ammunition Amnesty Program.....	11
4.	Range Operational Requirements/Responsibilities.....	12
4.1	Range Officer in Charge (OIC) / Range Safety Officer (RSO) Appointment Requirements .....	12
4.2	Range Officer in Charge (OIC).....	12
4.3	Range Safety Officer (RSO).....	15
4.4	Range Gate Guards .....	17
5.	Range Medical Requirements & Evacuation.....	18
5.1	Unit Medical Support Requirements .....	18
5.2	Keller Army Community Hospital (KACH).....	18
5.3	Serious Incident Report (SIR) Requirements.....	18

- 5.4 Emergency MEDEVAC Flight Requests..... 18
- 5.5 Hospital Strip Maps & Directions ..... 19
- 6. Range Concept of Operations ..... 20
  - 6.1 M16/M4 Rifle - Practice & Record Fire Programs ..... 20
  - 6.2 M16/M4 CBRN Familiarization & Qualification..... 21
  - 6.3 Unassisted Night Fire Familiarization & Qualification ..... 22
- 7. Radio Procedures..... 24
  - 7.1 Requesting a Hot Status ..... 24
  - 7.2 Reporting First Round Fired Down Range..... 24
  - 7.3 Reporting Last Round Fired Down Range ..... 24
  - 7.4 Requesting a Cold Status..... 25
  - 7.5 Requesting a Cease Fire Time..... 25
  - 7.6 Requesting to Lift Cease Fire Time ..... 25
  - 7.7 Change of OIC / RSO..... 26
  - 7.8 Requesting a Radio Check (Hourly at the Top of the Hour)..... 26
- 8. Range Safety Brief ..... 27
- 9. Risk Management & Mitigation ..... 28
- 10. Reference Information, Reports & Forms ..... 29

# 1. General Information

---

## 1.1 Purpose

This Standard Operating Procedure (SOP) provides standard instructions and checklists for unit and individuals using Range 11, M16/M4 Record Fire Range. It defines standardized steps and procedures to be followed for its safe and efficient use.

This SOP is directive based and complies with applicable United States Military Academy and Department of the Army Regulations, current doctrine, policy and guidance.

---

## 1.2 Applicability

This SOP is designed to provide units with safe range operating procedures and guidelines. It applies to all units of the U. S. Armed Forces, civilian organizations, and individuals who are authorized to use this range or West Point Regulation 350-11 and DA Pam 385-63.

---

## 1.3 Responsibility

Use this SOP in conjunction with AR 385-63, DA Pam 385-63 and West Point Reg. 350-11 which provide specific and detailed range firing responsibilities for using units. These directed and required actions are necessary for the safe conduct of all range firing and training. Full compliance IAW the afore-mentioned regulations as well as steps and procedures of this SOP, is the responsibility of the commanders, as well as the personnel of using organizations or units. Personnel of any non-DoD civilian agency or activity, using West Point ranges and training facilities must also comply with the provisions and requirements outlined in West Point Reg. 350-11.

---

## 1.4 References

All required and related publications are those covering the training conducted and those listed in the applicable chapters and Appendix A of West Point Reg. 350-11 or other respective regulations, policies and procedures. Additional references are also listed at Appendix A, of AR 385-63 and DA Pam 385-63.

---

## 1.5 Suggested Improvements

The proponent of this Standard Operating Procedure (SOP) is the Director of Plans, Training, Mobilization and Security, U.S. Army Garrison West Point, ATTN: DPTMS, Building 621 Wilson Road, United States Military Academy, West Point, New York 10996-5000. Users are encouraged to send comments and suggested improvements on DA Form 2028 (Recommended Changes to Publications and Blank Forms).

---

---

## 2. Range Description & Characteristics

---

### 2.1 Range Description & Definitions



#### 2.1.1 Range Description

Range 11 is a 16-lane modified record fire range used to train and test individuals on the skills necessary to identify, engage, and defeat stationary infantry targets for day, night (limited visibility) and CBRN (NBC) qualification requirements using the M16 / M4 rifles. All targets are fully automated and the event-specific target scenario is computer-driven and scored from the range tower. The range operating system is fully capable of providing immediate performance feedback to the using participants.

---

### 2.2 Range Location

Range 11 is located in Training Area Z5, on Range Road 26, vicinity grid WL80887901. It is accessible off of Highway 293 between Mine Torne Road and Long Pond. A key is required to access this range.

---

### 2.3 Standard Supported Courses of Fire

Range 11 consists of 16 firing lanes that support the M16/M4 rifle firing the following courses of fire:

Day Practice Record Fire	Day Record Fire Qualification
CBRN Familiarization & Qualification (50 Meter)	Night Fire Familiarization & Qualification (Un-Assisted)

## 2.4 Authorized Weapons & Ammunition

WEAPON CALIBER	AMMUNITION DODIC
5.56mm (NO 5.56 SAW or MG authorized).	A059, AA33, A071, AB Series Ammunition

## 2.5 Range Specific Safety Measures

### 2.5.1 Danger Areas

WEAPON CALIBER	TRAINING AREAS CLOSED
5.56mm (NO 5.56 SAW or MG authorized).	D1, D3, D4, D5, D6, Z4, Z5 and Z6

### 2.5.2 Range Gate Guard Requirements

A range gate guard be posted in the guard shack, vic grid WL80797935.

### 2.5.3 Range and Gate Closures

Range 11 requires the closure of the following:

GATES CLOSED	RANGES / FACILITIES CLOSED
Range Gate, vicinity grid WL80697941.	Observation Post McNair

## 2.6 Range Targetry

Range 11 depicts the following targetry on automated target mechanisms:

TARGET DESCRIPTION	TARGET NSN
F Type, Plastic Silhouette Target	6920-00-071-4589
E Type, Plastic Silhouette Target	6920-00-071-4780
E-Type, 3-D Plastic Mannequin	6920-01-164-9625
F-Type, 3-D Plastic Mannequin	6920-01-387-6397

NOTE: The 50-meter target mechanisms are equipped with a muzzle flash simulator to support un-assisted Night-Fire familiarization and Qualification.

## 2.7 Range Support Facilities

Range 11 has the following range support facilities to support operations:

Range Tower	Ammunition Breakdown Point
Covered Bleachers	Target maintenance & Instructional Classroom building
Latrines	Covered Mess Shelter

---

## 2.8 Authorized Parking

Military Vehicles – Authorized military parking is behind the range tower in designated parking spaces.

Civilian Privately Owned Vehicles (POVs) – Just inside Gate #86, vicinity grid WL80687943.

---

NOTE: Military vehicles are NOT permitted past the Range 11 Tower when Range 12 is operational.

---

---

## 2.9 Communications

All live fire ranges must maintain two separate means of communication with Range Operations at all times.

Primary means of communication with Range Operations is Motorola Handheld "Livefire". The secondary means of communication is a landline phone, (845) 938-5243) located in the range tower.

A quick reference phone index is located at the front of this SOP Binder.



---

## 3. Range Safety & Security Procedures

---

### 3.1 Individual Personal Protection Equipment (PPE)

- a. Ballistic (Kevlar or Army Combat Helmet (ACH) **WILL** be worn for safety and protection by all military personnel on the firing line of all ranges. This requirement applies to firer's and non-firer's (coaches, range personnel) alike.
- b. Individual Body Armor (IBA) or Flak Jackets are required on all firing ranges, and **WILL** be worn by all personnel engaged in any live fire activity. This reinforces appropriate combat conditions and proper training environment of any weapon marksmanship training program.
- c. Eye Protection. All personnel engaged in any live fire activity **WILL** wear individual approved eye protection.
- d. Hearing Protection. All personnel engaged in any live fire activity **WILL** wear approved single point hearing protection. This requirement applies to firer's and non-firer's (coaches, range personnel) alike.

---

### 3.2 Weapons Handling

- a. Weapons will be carried in such a manner that the muzzle of the weapon is always pointed up and down range.
- b. All weapons will be inspected by the OIC or RSO before firing and upon completion of firing prior to leaving the range to include when using blank ammunition. ALL weapons will be cleared by use of the weapons clearing barrels at the center of the range and visually verified by the Range OIC or RSO upon entering or exiting the firing line.
- c. Under **NO** circumstances will any weapon be removed from the firing line while loaded or when suspected of having a round in the chamber or receiver.
- d. Weapons may be taken into bleachers but will remain in the possession of the user. They will not be left unattended.
- e. Weapons will not be stored in a building or connex overnight on any range or training area.

---

### 3.3 Malfunction & Misfire Procedures

- a. Under **NO** circumstances will any individual attempt to reduce a stoppage of a weapon by use of force or tools not specifically designed for such a purpose. In circumstances where a weapon system or ammunition has malfunctioned or misfired:

STEP	ACTION
1	Firer or crew should immediately take the appropriate individual or crew actions required IAW the applicable weapon system FM / TM publication.
2	If immediate action drill does not remove the stoppage, the weapon will be checked by the RSO, and the Range OIC will be notified.
3	Report the malfunction / misfire to Range Operations by type and nomenclature. Range Operations will contact the Quality Assurance Specialist, Ammunition Surveillance (QASAS) or a Logistic Assistance Representative (LAR) from DOL.
4	Weapon will remain on the firing line, oriented down range.
5	Weapon will be safeguarded until QASAS or LAR arrive to investigate.
6	Upon completion of the range firing, return any misfired ammunition items to the ASP.

### 3.4 Ammunition Handling & Storage

All training ammunition, pyrotechnic items or explosive material will be handled and stored IAW Chapter 2, FM 9-13 and DA Pam 385-64. Issuing and accounting for all training ammunition and explosive items will be IAW Chapter 11, DA Pam 710-2-1 (Supply Update). Contact the West Point Ammunition Supply Office for specific procedures for requesting, drawing and turning in ammunition and any residue.

Using units are responsible for the physical security, safeguarding, storing, and handling and will ensure the ammunition or explosive items are protected from the weather.

**NOTE:** Ammunition is not allowed to be stored on the range complex overnight.

Using units will perform the following ammunition or explosive storage actions any time ammunition or explosive items are stored on a range, at a firing point, or at any field storage location. All live or blank ammunition and explosive items; will adhere to the actions and procedures below.

STEP	ACTION
1	Will either be placed on pallets or dunnage at the range site; or utilize the covered ammo shelter or ammunition issue and breakdown building on the range if present.
2	Be positioned in a dry or well drained area if stored on pallets.
3	Be covered by tarpaulins for protection from sparks, direct sunlight, rain or other weather effects.
4	Have on hand the proper type and required number of functional fire extinguishers, located at the ammunition storage site.
5	Have the proper type and number of warning placards displayed.
6	Have "NO SMOKING" signs prominently posted.
7	Have storage site access controlled, guarded and secured.
8	Be segregated by class and type. This requirement specifically applies to blank ammunition, simulators and pyrotechnic items.
9	Limit the unpacking of all ammunition items at a range or firing point to the minimum number of rounds needed for efficient firing of the exercise.
10	All vehicles will have the proper type and numbers of identifying placards prominently displayed whenever a vehicle is used to transport ammunition, explosives or pyrotechnic items.
11	Vehicles transporting ammunition will move directly to and from the range and ammunition supply point.

### 3.5 Army Range Safety Memorandums/Messages (ARSMMs)

Interim changes may be published to AR or DA Pam 385-63 as Army Range Safety Memorandums/Messages (ARSMMs). A file of all current ARSMMs is maintained at Range Operations. Range OIC/RSO personnel will be familiar with ARSMMs associated with specific training being conducted prior to conducting operation on the range.

### 3.6 Unexploded Ordnance (UXO) and Reporting of Duds

Do NOT touch or disturb any Unexploded Ordnance (UXO) encountered. Leave any UXO discovered in place, including all rounds observed as falling into or within the designated range impact area but which fail to function (detonate). All rounds that fall into the common impact area, but fail to detonate will be reported to Range Operations at the conclusion of the range firing.

If a round, a suspicious item or ordnance, or a UXO item is found outside a designated range firing impact area do NOT disturb the item. Conspicuously mark the item, route traffic a safe distance around. Report the UXO immediately to Range Operations and initiate a dud report.

### **3.7 Ammunition Amnesty Program**

The Ammunition Amnesty Program is designed to ensure maximum recovery of ammunition and explosives. This program is not intended to circumvent normal turn-in procedures. Other munitions and ammunition above 7.62mm will be retrieved only by EOD, ASP or Range Operations personnel. Documentation is not required for turn-in under the Ammunition Amnesty Program. Contact West Point ASP Office at Com 938-3216 for further information.

## 4. Range Operational Requirements/Responsibilities

### 4.1 Range Officer in Charge (OIC) / Range Safety Officer (RSO) Appointment Requirements

WEAPON SYSTEM	OFFICER IN CHARGE (OIC)			RANGE SAFETY OFFICER (RSO)		
	OFF	CADET	NCO	OFF	CADET	NCO
Practice hand grenade simunitions training devices; simulators, and small arms (5.56mm and below)	X	N/A	E6(P)	X	X (Wpns Qualified)	E5(P)
Chemical Agents (CS) and smoke	X	N/A	E6 (MOS Qualified)	X	N/A	E5
Aerial gunnery, live grenades, grenade launchers, grenade machine guns; Live mines, and demolitions.	X	N/A	E7	X	N/A	E6
Field Artillery and LASER ranges	X (0-3)	N/A	N/A	Battery XO X	N/A	N/A
Live Fire Exercises using organic weapons, team through squad.	X	N/A	N/A	X	N/A	E7
Mortars	X	N/A	N/A	X	N/A	E6
Direct fire antitank rockets	X	N/A	E7	X	N/A	E6
Specialty Non-LFX Courses	X	N/A	E6	X	X	X
Specialty Non-LFX Courses (Rappel) * Rappel Master Certified	X*	N/A	E7*	X	N/A	E6

Table 4-1, OIC / RSO Appointment Requirements

### 4.2 Range Officer in Charge (OIC)

The Range OIC holds the responsibility and accountability for the conduct of the activity and the adherence to governing regulations and guidance.

#### 4.2.1 OIC Qualifications

A commissioned, warrant, or noncommissioned officer (NCO) may serve as a Range OIC. NCOs serving as OIC will be in the grade as shown in Table 4-1 above, at a minimum. Range OICs will be qualified on the weapon(s) systems being fired, and will have satisfactorily completed a range safety certification program in the weapon system(s) for which they are responsible conducted by their Battalion/Unit (O5 & above Command) to which they are assigned.

### 4.2.2 OIC Actions & Procedures before Range Occupation

STEP	ACTION	TAKEN
1	Thoroughly plan the range operation and/or training activity and determine the personnel and equipment support requirements.	
2	Be weapons system(s) qualified, and that his/her command safety certification and appointment is completed, and on file at Range Operations.	
3	Receive the mandatory Range Operations briefing within ONE DAY prior to use.	
4	Ensure a qualified RSO is command safety certified and appointed, and briefed by Range Operations. OIC briefs the RSO on his/her duties to be performed.	
5	Verify that all personnel in a direct supervisory role or safety position are familiar with the provisions of this SOP, USMA Reg. 350-11, AR/DA Pam 385-63, and the FM/TMs governing the weapon(s) system and ammunition to be fired.	
6	Ensures that the required and appropriate medical support personnel are qualified, and that the appropriate equipment and supplies will be available to support the range operation(s) and/or training activity.	
7	Check in at Range Operations upon arrival to the installation to receive an updated briefing and sign for the range and necessary support equipment.	
8	Assign an Ammo NCO to be responsible for, and to ensure that ammunition and explosives are properly drawn, transported, handled, stored, and accounted for, from time of receipt, to the time of expenditure or turn in.	
9	Develops a composite risk management worksheet for all phases of the range operation(s) and/or training activity, and mitigate initial high and extremely high hazards through appropriate control measures, using DA Fm 2977, Deliberate Risk Assessment Worksheet.	

### 4.2.3 OIC Actions & Procedures before Operations

STEP	ACTION	TAKEN
1	Ensures the correct range/firing position and or training facility is occupied, and conducts a joint inventory with a Range Operations representative to ensure the presence and condition of the range facilities and equipment.	
2	Conducts a Range OIC brief to the RSO, Range Safety Assistants, Medical NCO, Assistant Instructors, Ammunition detail, Range Gate Guards and Range/Target Operator, reinforcing their duties and responsibilities on the conduct of the range operation.	
3	Directs and supervises that the required designated areas of the range are established and set up as required/planned.	
4	Establishes primary radio and secondary telephone communications with Range Operations, and notifies Range Operations upon initial occupation.	
5	Ensures that the red range flag is displayed during daylight operations, and that the red flashing light on the flag pole is displayed during periods of limited visibility.	
6	Verify that the down range portion of the range and impact area are clear of unauthorized personnel and that the appropriate range specific safety measures for range gates, barriers, gate guards and danger areas directed by Range Operations have been taken (Refer to paragraph 2.5 of this SOP).	
7	Verify that the required medical personnel and equipment support is on site, with strip maps to local medical treatment facilities is present, prior to requesting a HOT status.	
8	Verify the continuous safety and security of ammunition on the range. Under NO circumstances will ammunition or explosives be unguarded or unattended. Ammunition must be stored in the designated area and NO smoking is allowed within	

	50 feet of the ammunition or the firing line.	
9	Verify that all weapons are mechanically safe to fire.	
10	Verify that all personnel wear the required personal protection equipment.	
11	Ensures that a qualified target/computer operator is present, range targetry is fully operational, and that ONLY authorized courses of fire are conducted per the weapon system	
12	Ensure all applicable references and regulations are physically present and on hand:	
13	Notifies Range Operations and requests permission to place the range in a HOT status (Refer to paragraph 7.1).	
14	Implements risk management actions and applicable control measures identified for this phase of the range operations and/or training event.	

**NOTE:** Only one firer is allowed at each firing point. At NO time will two firers (simultaneously firing) be permitted on the same firing point or firing at targets in the same lane.

#### 4.2.4 OIC Actions & Procedures during Operations

STEP	ACTION	TAKEN
1	Be present at all times in the range tower or firing line while the range is in a HOT status, and maintains a constant observation of the firing line at all times during range firing. Be prepared to brief all range visitors/VIPs, and Range Operations personnel.	
2	Verify that all personnel prior to firing receive a range safety briefing, and that only authorized weapons and ammunition are about to be used.	
3	Ensures that the left and right range limits are marked and identified by red blinking lights or chem-lights during periods of reduced visibility.	
4	Verify that the quantity of ammunition unpacked at the designated ammunition storage site is kept to the minimum number of rounds needed for efficient firing for the exercise/course of fire being conducted.	
5	Notifies Range Operations when first round is fired down range (Refer to paragraph 7.2).	
6	Ensures that primary and secondary means of communication with Range Operations are maintained, and that hourly radio checks are performed (Refer to paragraph 7.8)	
7	Ensures that communications are maintained with all road/gate guards.	
8	Verify that personnel and/or weapons do NOT move to or leave the firing line without being cleared, and only on permission by the Range Safety Officer.	
9	Maintains a constant observation of the firing line at all times, and that the down range safety danger areas remain clear.	
10	Immediately calls or announces a self-imposed "Cease Fire" and notifies Range Operations when (Refer to paragraph 7.5):	
10a	Any unsafe action is observed or reported by ANY individual observing an unsafe act.	
10b	When communications are lost with Range Operations-and/or Gate Guards.	
10c	When any personal injury, major weapon or ammunition malfunction occurs.	
10d	When any personnel, vehicle, animal or aircraft is observed down range, or in the safety zone danger areas.	
10e	When a range or woodland fire is observed.	
10f	When any rounds are observed to land outside the prescribed impact area.	
10g	Whenever the OIC, RSO, or medical support leaves the range	
11	Verify that all weapon malfunctions are handled IAW appropriate FM/TM.	
12	Ensures that all misfires are handled IAW appropriate FM/TM.	
13	Notifies Range Operations when a change in OIC/RSO is needed (refer to paragraph 7.7).	
14	Notifies Range Operations when last round is fired down range (refer to paragraph 7.3).	

15	Implements risk management actions and applicable control measures identified for this phase of the range operations and/or training event.	
----	---	--

### 4.2.5 OIC Actions & Procedures after Operations

STEP	ACTION	TAKEN
1	Notify Range Operations upon completion of firing/training and request permission to go COLD (reference procedure 7.4). Be prepared to report:	
1a	Number of personnel trained.	
1b	Number of rounds expended by type and DODAC.	
2	Verify 100% accountability for all weapons and ammunition.	
3	Verify that ALL personnel are searched for ammunition and brass prior to their departure from the range.	
4	Contact Range Operations for range clearance/inspection after performing the following:	
4a	Range flag is lowered and red blinking lights are recovered (if applicable).	
4b	Police range for all brass. All brass, prescribed CL V recoverable items, packing material and unexpended ammunition are returned to the ASP.	
4c	Police range for all trash and place in local dumpster. NO MREs, kitchen waste or CL V ammunition dunnage will be placed in the dumpsters.	
4d	Check overall condition of the range to include all range support facilities and repair any range targets if applicable.	
4e	Road barriers, gates are re-opened and gate guards are recovered.	
4f	Hand receipted range equipment and supplies are recovered, cleaned and prepared for turn-in.	
5	Conduct a joint inventory IAW range clearance agreement with a Range Operations representative for clearance of range/training area, and secure the range facility.	
6	Return all hand-receipted range equipment, along with any applicable reports/forms to Range Operations.	

## 4.3 Range Safety Officer (RSO)

A direct representative of the Range OIC and responsible to the OIC for insuring the adequacy of safety of firing, training operations, and ensuring compliance to governing regulations and guidance.

### 4.3.1 RSO Qualifications

A commissioned, warrant, or noncommissioned officer may serve as the RSO. NCO grade requirements will be in accordance with Table, 4-1 above, at a minimum. Personnel assigned as RSO will have NO other duties during that period of training. RSOs will be qualified on the weapon(s) systems being fired, and will have satisfactorily completed a range safety certification program in the weapon system(s) for which they are responsible conducted by their Battalion/Unit (O5 & above Command) to which they are assigned.

### 4.3.2 RSO Actions & Procedures before Operations

STEP	ACTION	TAKEN
1	Assist the Range OIC in the planning of the range operation and/or training activity when needed or as applicable to ensure its safe and efficient operation.	
2	Be weapons system(s) qualified, and that his/her command safety certification and appointment is completed, and on file at Range Operations.	
3	Receive the mandatory Range Operations briefing prior to use of range/training facility.	
4	Ensure that all personnel appointed to assistant range safety positions are qualified and familiar with the provisions of this SOP, West Point Reg. 350-11, AR/DA Pam 385-63, and the FM/TMs governing the weapon(s) system and ammunition to be fired.	
5	Ensure that all personnel appointed to assistant range safety officer (ARSO) roles are briefed. Recommended ratio of ARSO's to shooters is 1:5.	
6	Ensures that the down range portion of the range and visible portion of the impact area are clear of unauthorized personnel prior to range OIC requesting the range be placed in a HOT status.	
7	Ensures that the required medical personnel and equipment support is on site and remains on site at all times while the range is in a HOT status.	
8	Ensures the continuous safety and security of ammunition on the range.	
9	Assist the Range OIC when needed or as applicable to ensure that the requirements for procedures 4.2.2 and 4.2.3 above are met.	

### 4.3.3 RSO Actions & Procedures during Operations

STEP	ACTION	TAKEN
1	Be present at all times on the range firing line while the range is in a HOT status, and perform NO other duties except that of the RSO. Ensure safety is paramount.	
2	Receive and organize firing orders, and conduct the following:	
2a	Ensure that all personnel prior to firing receive a range safety briefing, and that only authorized weapons and ammunition are about to be used.	
2b	Ensures that all weapons are mechanically safe to fire.	
2c	Ensures that all personnel wear the required personal protection equipment.	
2d	Verifies the proper type and quantity of ammunition issued to each firer, and ensures that ammunition unpacked is kept to a minimum to ensure efficient firing of the course of fire being conducted.	
3	Ensures that all personnel and/or weapons do NOT move to or from the firing line without being cleared, and only on the permission of the RSO.	
4	Maintain a constant observation of the firing line at all times, and that the visible down range safety area remains clear.	
5	Ensures that all weapons engage targets ONLY within their prescribed lane markers, and that all rounds fired down range remain within the prescribed range limits.	
6	Immediately announces and calls for a self-imposed "CEASE FIRE" and notifies the Range OIC when any of the following is heard or observed:	
6a	Any unsafe action is observed or reported by ANY individual observing an unsafe act.	
6b	When any personal injury, major weapon or ammunition malfunction occurs.	
6c	When any personnel, vehicle, animal or aircraft is visually observed down range.	
6d	When a range or woodland fire is observed.	
6e	When any rounds are observed to land outside the prescribed impact area.	
6f	Whenever the medical support leaves the range.	
7	Ensure that the range ammo issue point maintains accurate and proper accountability of all CL V items during operations on DA Fm 3020-R.	
8	Ensure that all weapon malfunctions are handled IAW appropriate FM/TM.	



9	Ensures that all misfires are handled IAW applicable FM/TM.	
10	Notifies Range OIC when a change in RSO is needed (refer to paragraph 7.7).	

#### 4.3.4 RSO Actions & Procedures after Operations

STEP	ACTION	TAKEN
1	Ensure 100% accountability for all weapons and ammunition.	
2	Ensure that ALL personnel are searched for ammunition and brass prior to their departure from the range.	
3	Report to the Range OIC upon completion of firing/training the following:	
3a	The number of rounds expended by type and DODAC that was issued and tracked by the ammo issue point NCOIC.	
3b	The police of brass on the firing line, and that all brass, prescribed CL V recoverable items, packing material and unexpended ammunition has been accounted for and is prepared for turn-in to the ASP.	
3c	The police of the range overall for all trash, and that the designated areas of the range that were established are recovered back to the original condition.	
3d	That all range targetry repair has been completed if applicable, and that the overall condition of the range and support facilities are in the original condition.	
3e	All hand receipted range equipment and supplies are recovered, cleaned and prepared for turn-in to the Range OIC and/or Range Operations.	
4	Assist the Range OIC when needed or as applicable to ensure that the requirements for procedures 4.2.5 above are met.	

#### 4.4 Range Gate Guards

The Range OIC will ensure gate guards are posted and gates are locked as required for the range being utilized as outlined in paragraph 2.5. Gate guards will be briefed on their duties, the training that is being conducted and perform their duties IAW West Point Reg. 350-11. Personnel acting as gate guards will:

STEP	ACTION	TAKEN
1	Direct authorized visitors to a specific location where the visitors will be met by the Range OIC. When entrance to the range is not authorized, the gate guard will advise visitors to wait or to use another route.	
2	Maintain <u>continuous</u> radio communications with the Range OIC. The arrival of visitors will be reported immediately to the Range OIC. If the gate guard is unsure whether a visitor is authorized on the range, the gate guard will contact the Range OIC for clarification before granting entrance.	
3	Remain at the gate shack or the gate if no shack is present. Maintain the assigned gate while the range is occupied.	
4	POV's will NOT be used to assist in barrier control or gate guard duty.	
5	Permit Range Operations personnel and vehicles full and un-restricted access to all ranges and training areas while performing their assigned duties.	

---

## 5. Range Medical Requirements & Evacuation

---

### 5.1 Unit Medical Support Requirements

Units will comply with the following range medical support requirements:

- a. A current qualified Combat Lifesaver (MOS immaterial). This individual will be equipped with a litter, radio communication, and a Combat Lifesaver (CLS) aid-bag, containing all required CL VIII items that have a valid expiration date.
- b. A dedicated medical evacuation vehicle, capable of transporting a litter, and properly equipped, and with a current PMCS. CLS personnel assigned to these ranges, along with the supporting medical vehicle, will not be used for any other duty.

#### 5.1.1 Execution

- a. Using unit medical personnel will review and familiarize themselves with the strip map route(s) to KACH ER and the local community hospital prior to live fire range operations are conducted.
- b. Whenever the dedicated medical aid person or vehicle must leave the area for any reason the range must Cease Fire and remain in a "COLD" status until a replacement is provided, or until the assigned vehicle and medical personnel have returned to the range. Range Operations will then grant the unit permission to re-open the range and place the range in a "HOT" status.
- c. Medical support personnel at the range will provide treatment for minor injuries and basic first-aid for life-threatening injury or illness.
- d. Medical evacuation vehicles will display all frequencies and telephone numbers in case of immediate use:
  - a. Range Operations Motorola Radio "Livefire" Channel or by phone at (845) 938-3930.
  - b. West Point Fire & Emergency Services Division – 845.938.5197
  - c. Range Operations Air Frequency is VHF 126.20.
  - d. KACH ER – 845.938.4004.

---

### 5.2 Keller Army Community Hospital (KACH)

Injuries and/or illness requiring immediate emergency support will be immediately reported to the KACH ER, with the location of the range site for patient evacuation by KACH.

---

### 5.3 Serious Incident Report (SIR) Requirements

Full and immediate medical attention directed at the patient is the first and foremost priority. As soon as possible, the Range OIC or RSO will contact Range Operations and report the medical injury/accident. Be prepared to provide at a minimum "the Five W's" (Who, What, When, Where and Why).

---

### 5.4 Emergency MEDEVAC Flight Requests

The USMA does NOT have an organic MEDEVAC capability to support the training complex operations; therefore units and organizations will plan medical evacuation with their organic assets. Stat Flights are for the emergency evacuation of injured personnel by air ambulance. Only the emergency first responder on site, DES dispatcher or KACH medical personnel are authorized to request or terminate a MEDEVAC mission.

To obtain a Stat Flight, contact Range Operations by Motorola Handheld "Livefire" channel or by telephone at (845)938-3930. After Hours the Military Police Dispatch at (845)938-3333. Air Frequency is VHF 126.20.

9-LINE MEDEVAC		
ANNOUNCED		LINE INFO DESCRIPTION
LINE	LINE INFO	
1		Location of the Pick-Up site by 6-digit grid and any prominent terrain features nearby.
2		Unit Identification
3	A= B=	Number of Patients by evacuation category/precedence A=Urgent (requires immediate evacuation to prevent loss of life B=Priority (serious injury, but <u>NOT</u> life threatening
4	A= B= C= D=	Special equipment needed: A=none B=hoist C=extraction equipment D=ventilator
5	A= B=	Number of patients A=litter B=ambulatory
6		Number and types of wounds, injuries and illnesses
7		Method of marking landing zone/pick-up site A=panels B=pyrotechnic signal C=smoke signal D=none E=other
8		Patient nationality and status A=US military B=US civilian C=other (describe)
9		Terrain description of pick-up site, any site hazards; if none=so state

## 5.5 Hospital Strip Maps & Directions

### 5.5.1 Keller Army Community Hospital

Reference Tab 10A, Local Strip Map to Keller Army Community Hospital

### 5.5.2 St. Lukes Community Cornwall Campus Hospital, Cornwall, NY

Reference Tab 10B, Local Strip Map to Saint Lukes Community Hospital.

## 6. Range Concept of Operations

Range OIC's should refer to the current publication of DA Pamphlet 350-38, Standards in Training Commission (STRAC). STRAC strategies reflect by unit type each of the specific weapons training strategies and the training doctrine from the appropriate weapon Army Field Manual. This STRAC strategy along with the weapon system FM outlines individual weapon training standards, and reflects tables showing the task and ammunition resources required.

**NOTE:** Only one firer is allowed at each firing point. At NO time will two firers (simultaneously firing) be permitted on the same firing point or firing at targets in the same lane.

### 6.1 M16/M4 Rifle - Practice & Record Fire Programs

#### 6.1.1 Practice & Record Fire Performance Standards

**Task:** Detect and engage stationary single and multiple target timed targets with the M16/M4 rifle.

**Conditions:** Given an M16/M4 rifle, during daylight conditions on a record fire range, 40 timed target exposures at ranges from 50 to 300 meters, and 40 rounds of ball ammunition. Engage 20 targets from the prone supported position or the foxhole supported position (unit commander's discretion) and 10 targets from the prone unsupported position and 10 targets from the kneeling unsupported position while wearing a helmet, hearing protection and IBA.

FIRING POSITON	NUMBER OF ROUNDS FIRED
Prone supported firing position or (at the unit commander's discretion) the foxhole supported firing position.	20 rounds
Prone unsupported firing position	10 rounds
Kneeling unsupported firing position	10 rounds

**NOTE:** Each firer is issued one 20-round magazine and two 10-round magazines.

**Standard:** Detects and engages targets with the M16/M4 rifle and achieves a minimum of 23 target hits out of 40 target exposures.

**Scoring Standards:** A firer who fails to qualify on the first try should fire the practice record fire range after the problem has been diagnosed and remedial training has been provided. Practice qualification ratings are:

QUALIFICATION RATINGS	NUMBER OF TARGET HITS
Expert	36 to 40
Sharpshooter	30 to 35
Marksman	23 to 29

#### Firing Rules & Instructions.

1. The rear sight is on the proper setting (M16A2/3 = 8/3; M16A4 and M4 = 6/3 flush).
2. The rear sight aperture is set on 300, NOT 800.
3. The M16A1's rear sight is set on the unmarked aperture marked, short range.
4. The small aperture is being used.
5. Peer coaching is allowed and stressed during Practice Record Fire, and is NOT ALLOWED during Record Fire.
6. The same scenario is used for both the practice record fire and record fire course of fire tables.

NOTE: Since practice record fire should be conducted on a different range than record fire when possible; firers performing practice record fire and record fire on the same range should use a different lane since another record fire range is not available.

---

### **6.1.2 Practice & Record Fire Firing Commands**

The same computer scenario is used for both the day practice record fire and record fire qualification tables. The main difference is coaching is allowed during practice record fire and NO coaching is allowed during record fire qualification.

#### PRACTICE RECORD FIRE

Firers, Assume a good \_\_\_\_\_ position (insert appropriate firing position).  
Firers, lock and load one magazine of \_\_\_\_\_ rounds (insert appropriate # of rounds for the table).  
Ready on the Left? Ready on the Right? Ready on the Firing Line?  
The firing line is now ready.  
Coaches assist firers with their assigned lane to identify left and right lane limits.  
Firers place your selector on semiautomatic.  
Firers watch your lanes (execute appropriate table scenario on computer)  
Firers, CEASE FIRE, lock and clear your weapon, place your selector lever in the SAFE position (after completion of the scenario).

#### RECORD FIRE QUALIFICATION

Firers, Assume a good \_\_\_\_\_ position (insert appropriate firing position).  
Firers, lock and load one magazine of \_\_\_\_\_ rounds (insert appropriate # of rounds for the table).  
Ready on the Left? Ready on the Right? Ready on the Firing Line?  
The firing line is now ready.  
Firers identify your assigned lane left and right limits.  
Firers place your selector lever on semiautomatic.  
Firers watch your lanes (execute appropriate table scenario on computer)  
Firers, CEASE FIRE, lock and clear your weapon, place your selector lever in the SAFE position (after completion of the scenario).

---

## **6.2 M16/M4 CBRN Familiarization & Qualification**

Unit Commander's must determine the impact and the appropriate risk level when using MOPP equipment during LFX operations as many actions are affected due to the impaired vision while wearing a protective mask and when handling a weapon with rubber chemical gloves. Prior training will be conducted prior to live fire on handling the weapon, performing operation and function checks, loading and unloading actions affected by MOPP equipment.

### **6.2.1 CBRN Performance Standards**

Task: Detect and engage stationary single timed targets with the M16/M4 rifle in a simulated CBRN environment to develop the firer's confidence and ability to engage targets while wearing any level of MOPP equipment.

Conditions: Given an M16/M4 rifle, during daylight conditions on a record fire range, 20 timed target exposures at 50 meters, and 20 rounds of ball ammunition. Engage 20 targets from the foxhole supported position while wearing a helmet, hearing protection and IBA and unit commanders directed MOPP level.

Standard: Detects and engages targets with the M16/M4 rifle in the MOPP level determined and obtains 11 hits out of 20 target exposures. This is a GO / NO-GO exercise.

Firing Rules & Instructions.

1. The M16A2/A3/A4 or M4 rifles rear sight is set on the 0-2 aperture.
2. The M16A1s rear sight is set on the unmarked aperture.
3. Firers whom have lens inserts for their protective mask have them inserted.
4. Each firer is issued 20-rounds of ammunition to be loaded in two magazines.
5. Each firer engages 20 targets at 50 meters from the foxhole supported position. Target exposures are 10 targets from the right and 10 from the left on a record fire range.
6. The same scenario, Table I of the Record Fire Qualification Firing table is used (DA Fm 3595-R).

## **6.2.2 CBRN Fire Commands**

Announce GAS-GAS-GAS (firers dawn their protective mask and ensure a good seal for proper visibility)

Firers, Assume a good foxhole supported firing position.

Firers, lock and load one magazine of 10 rounds.

Ready on the Left? Ready on the Right? Ready on the Firing Line?

The firing line is now ready.

Firers identify your assigned lane left and right limits.

Firers place your selector lever on semiautomatic.

Firers watch your lanes (execute appropriate table scenario on computer)

Firers, CEASE FIRE, lock and clear your weapon, place your selector lever in the SAFE position (after completion of the scenario).

---

## **6.3 Unassisted Night Fire Familiarization & Qualification**

Task: Detect and engage stationary single timed targets with the M16/M4 rifle under limited visibility (night) conditions to develop the firer's confidence and ability to engage targets during periods of limited visibility. Muzzle flash simulators located on the 50-meter target mechanisms provide the firer with a momentary indication that a target is presenting itself for engagement.

Conditions: Given an M16/M4 rifle, during night time conditions on a record fire range, 20 timed target exposures at 50 meters, and 20 rounds of ball ammunition. Engage 20 targets from the foxhole supported position while wearing a helmet, hearing protection and IBA and unit commanders directed MOPP level.

Standard: Detects and engages targets with the M16/M4 rifle in the MOPP level determined and obtains 11 hits out of 20 target exposures. This is a GO / NO-GO exercise.

Firing Rules & Instructions.

1. The M16A2/A3/A4 or M4 rifles rear sight is set on the 0-2 aperture.
2. The M16A1s rear sight is set on the unmarked aperture.
3. Each firer is given two 15-round magazines with 10 rounds of ball ammunition and 5 rounds of tracer ammunition in each magazine.
4. Each firer engages the 50 meter F-type silhouette target from the prone supported or foxhole supported (Unit commander's discretion) with one magazine.
5. Each firer engages the 50-meter F-type silhouette target from the prone unsupported or kneeling position (unit commander's discretion) with the second magazine.
6. Firers achieve 7 hits out of 30 target exposures. This is a GO / NO-GO exercise.

### **6.3.1 CBRN Fire Commands**

Firers, Assume a good \_\_\_\_\_ position (announce appropriate firing position).

Firers, lock and load one magazine of 15 rounds.

Ready on the Left? Ready on the Right? Ready on the Firing Line?

The firing line is now ready.

Firers identify your assigned lane left and right limits.

Firers place your selector lever on semiautomatic.

Firers watch your lanes (execute appropriate table scenario on computer)

Firers, CEASE FIRE, lock and clear your weapon, place your selector lever in the SAFE position (after completion of the scenario).

---

## 7. Radio Procedures

---

### 7.1 Requesting a Hot Status

RANGE: RANGE OPERATIONS, THIS IS RANGE 11, OVER

RANGE OPERATIONS: RANGE 11, THIS IS RANGE OPERATIONS. GO AHEAD, OVER.

RANGE: RANGE OPERATIONS, THIS IS RANGE 11. REQUEST A HOT TIME, OVER.

RANGE OPERATIONS: RANGE 11, THIS IS RANGE OPERATIONS, DO YOU PHYSICALLY HAVE ON SITE REQUIRED MEDICAL SUPPORT WITH EQUIPMENT, RANGE SAFETY SOP BINDER, RED RANGE FLAG FLYING AND GATE GUARD WITH COMMO, OVER.

RANGE: RANGE OPERATIONS, THIS IS RANGE 11, YES, OVER.

RANGE OPERATIONS: RANGE 11, THIS IS RANGE OPERATIONS. I GIVE YOU A HOT TIME OF \_\_\_\_\_ HOURS. MY INITIALS ARE \_\_\_\_\_. CONFIRM HOT TIME AND SEND YOUR RANGE OIC INITIALS, OVER.

RANGE: RANGE OPERATIONS, THIS IS RANGE 11. I CONFIRM HOT TIME OF \_\_\_\_\_. RANGE OIC INITIALS ARE \_\_\_\_\_, OVER.

RANGE OPERATIONS: RANGE 11, THIS IS RANGE OPERATIONS. NOTIFY RANGE OPERATIONS WHEN FIRST ROUND IS FIRED DOWN RANGE. CONDUCT RADIO CHECKS WITH RANGE OPERATIONS HOURLY AT THE TOP OF THE HOUR, YOUR FIRST RADIO CHECK IS DUE AT \_\_\_\_\_. RANGE OPERATIONS OUT.

---

### 7.2 Reporting First Round Fired Down Range

RANGE: RANGE OPERATIONS, THIS IS RANGE 11, OVER.

RANGE OPERATIONS: RANGE 11, THIS IS RANGE OPERATIONS. GO AHEAD, OVER.

RANGE: RANGE OPERATIONS, THIS IS RANGE 11. FIRST ROUND FIRED DOWN RANGE, OVER.

RANGE OPERATIONS: RANGE 11, THIS IS RANGE OPERATIONS. I COPY FIRST ROUND FIRED DOWN RANGE AT \_\_\_\_\_, RANGE OPERATIONS OUT.

---

### 7.3 Reporting Last Round Fired Down Range

RANGE: RANGE OPERATIONS, THIS IS RANGE 11, OVER.

RANGE OPERATIONS: RANGE 11, THIS IS RANGE OPERATIONS. GO AHEAD, OVER.

RANGE: RANGE OPERATIONS, THIS IS RANGE 11. LAST ROUND FIRED DOWN RANGE, OVER.

RANGE OPERATIONS: RANGE 11, THIS IS RANGE OPERATIONS. I COPY LAST ROUND FIRED DOWN RANGE AT \_\_\_\_\_, RANGE OPERATIONS OUT.



## 7.4 Requesting a Cold Status

RANGE: RANGE OPERATIONS, THIS IS RANGE 11, OVER.

RANGE OPERATIONS: RANGE 11, THIS IS RANGE OPERATIONS. GO AHEAD, OVER.

RANGE: RANGE OPERATIONS, THIS IS RANGE 11. REQUEST A COLD TIME, OVER.

RANGE OPERATIONS: RANGE 11, THIS IS RANGE OPERATIONS. I GIVE YOU A COLD TIME OF \_\_\_\_\_. MY INITIALS ARE \_\_\_\_\_. CONFIRM COLD TIME, SEND YOU RANGE OIC INITIALS, YOUR AMMUNITION QUANTITY EXPENDED BY TYPE/DODAC AND THE NUMBER OF PERSONNEL TRAINED, OVER.

RANGE: RANGE OPERATIONS, THIS IS RANGE 11. I CONFIRM COLD TIME OF \_\_\_\_\_. RANGE OIC INITIALS ARE \_\_\_\_\_. \_\_\_\_\_ (#) ROUNDS OF \_\_\_\_\_ (DODAC) EXPENDED, WITH \_\_\_\_\_ (#) PERSONNEL TRAINED, OVER.

RANGE OPERATIONS: RANGE 11, THIS IS RANGE OPERATIONS, ROGER, OUT.

---

## 7.5 Requesting a Cease Fire Time

RANGE: RANGE OPERATIONS, THIS IS RANGE 11, OVER.

RANGE OPERATIONS: RANGE 11, THIS IS RANGE OPERATIONS. GO AHEAD, OVER.

RANGE: THIS IS RANGE 11, REQUEST A CEASE FIRE TIME, OVER.

RANGE OPERATIONS: RANGE 11, THIS IS RANGE OPERATIONS. I GIVE YOU A CEASE FIRE TIME OF \_\_\_\_\_ HOURS. MY INITIALS ARE \_\_\_\_\_. CONFIRM CEASE FIRE / ADMIN COLD TIME AND PROVIDE YOUR RANGE OIC INITIALS, OVER.

RANGE: RANGE OPERATIONS, THIS IS RANGE 11. I CONFIRM CEASE FIRE TIME OF \_\_\_\_\_. MY RANGE OIC INITIALS ARE \_\_\_\_\_, OVER.

RANGE OPERATIONS: RANGE 11, THIS IS RANGE OPERATIONS, ROGER, OUT.

---

## 7.6 Requesting to Lift Cease Fire Time

RANGE: RANGE OPERATIONS, THIS IS RANGE X, OVER.

RANGE OPERATIONS: RANGE 11, THIS IS RANGE OPERATIONS. GO AHEAD, OVER.

RANGE: RANGE OPERATIONS, THIS IS RANGE 11. REQUEST TO LIFE CEASE FIRE TIME AND RETURN TO A HOT STATUS, OVER.

RANGE OPERATIONS: RANGE 11, THIS IS RANGE OPERATIONS. I LIFT YOUR CEASE FIRE TIME STATUS AND PLACE YOU BACK INTO A HOT STATUS AT \_\_\_\_\_ HOURS. MY INITIALS ARE \_\_\_\_\_. CONFIRM RETURN TO HOT STATUS AND PROVIDE YOUR RANGE OIC INITIALS, OVER.

RANGE: RANGE OPERATIONS, THIS IS RANGE 11. I CONFIRM RETURN TO HOT STATUS TIME OF \_\_\_\_\_. MY RANGE OIC INITIALS ARE \_\_\_\_\_, OVER.

RANGE OPERATIONS: RANGE 11, THIS IS RANGE OPERATIONS, ROGER, OUT.

---

## 7.7 Change of OIC / RSO.

RANGE: RANGE OPERATIONS, THIS IS RANGE 11, OVER.

RANGE OPERATIONS: RANGE 11, THIS IS RANGE OPERATIONS. GO AHEAD, OVER.

RANGE: RANGE OPERATIONS, THIS IS RANGE 11. REQUEST A CHANGE OF OIC (or RSO), OVER.

RANGE OPERATIONS: RANGE 11, THIS IS RANGE OPERATIONS. SEND THE LAST NAME AND THE INITIALS OF THE NEW RANGE OIC (or RSO), WITH YOUR INITIALS, OVER.

RANGE: RANGE OPERATIONS, THIS IS RANGE 11. NEW OIC / RSO LAST NAME IS \_\_\_\_\_, NEW OIC / RSO INITIALS ARE \_\_\_\_\_. MY INITIALS ARE \_\_\_\_\_, OVER.

RANGE OPERATIONS: RANGE 11, THIS IS RANGE OPERATIONS. ROGER, OUT.

---

## 7.8 Requesting a Radio Check (Hourly at the Top of the Hour)

RANGE: RANGE OPERATIONS, THIS IS RANGE 11. RADIO CHECK, OVER.

RANGE OPERATIONS: RANGE 11, THIS IS RANGE OPERATIONS, ROGER RADIO CHECK, OUT.

---

## 8. Range Safety Brief

All firers will be briefed on the following items. This general safety brief is not all inclusive and requires the Range OIC / RSO to include commander's guidance, and/or any unit specific or other situational dependent areas of concern.

NOTE: Insert range, weapon and course of fire specifics that are required and/or applicable.

1. Identify the Range Officer in Charge (OIC) and the Range Safety Officer (RSO) at a minimum.
2. Identify the Location of Range Staff Cadre:
  - a) Range OIC and RSO
  - b) Assistant Range Safeties
  - c) Medic & the Evacuation Vehicle
  - d) Ammo Issue Point/Breakdown Building and CL V NCO
  - e) Others as required
3. Prescribed uniforms and personal protection requirements (hearing, eye, helmet and IBA as applicable and required) while on the range.
4. Course of fire and standards for the weapon system being fired.
5. Locations: Break/Smoking Areas, latrines, mess area, firing line and/or firing points, clearing barrels, parking and bleacher site. Also include any off limit or restricted areas.
6. Ammunition holding area/ issue point procedures & security.
7. Left, right limits, fire and no fire zones.
8. Procedures for Medical Emergency.
9. Procedures for range fires.
10. Severe weather plan, environmental requirements, issues and concerns.
11. NO food or beverages on firing line unless directed by OIC except water.
12. Leave all WILDLIFE at this range alone.
13. ALL VEHICLES on this Range will have a GROUND GUIDE.
14. Movement on firing line is directed by OIC.
15. NO pushing, NO shoving or horseplay at ANY time.
16. Unit is responsible for a personnel & vehicle shakedown for ammo & brass. No one will leave the range until this has been completed.
17. If you observe ANY UNSAFE situation, personnel, vehicles, aircraft, or wildlife down range call & indicate "CEASE FIRE" IMMEDIATELY everyone on the firing line echo "CEASE FIRE". Place all weapons on safe until the OIC or RSO have investigated the situation and declared it safe to resume training.
18. While on this Range you will take ALL COMMANDS FROM THE TOWER while on the firing line. Load weapon when instructed to do so by the tower or lane safety.
18. Weapon will remain in the SAFE POSITION unless otherwise specified by the ROIC.
19. No jumping into fox holes, off walls or firing tables. Inspect the firing position prior to entering for poisonous or harmful animals or insects.
20. Weapon malfunction apply immediate action to correct problem IAW appropriate FM if this fails apply remedial action, if this fails notify lane safety who will notify RSO to assist in correcting the malfunction.
21. ALL WEAPONS WILL BE CLEARED PRIOR TO, AFTER AND BEFORE ANY WEAPON IS MOVED FROM THE FIRING LINE. Once cleared off firing line, turn in all ammunition and expended brass to AMMO POINT.
22. When not on the firing line the bolt will be locked to the rear and the weapon on safe. Consider the weapon loaded at all times never point it at anyone.
23. Shooters will not hand a weapon to another person until it has been properly unloaded/cleared and the bolt has been locked to the rear, unless instructed to do otherwise by Range Safety.
24. MUZZLE AWARENESS:
  - a) Maintain positive control of your weapon at all times, LEVEL & DOWN RANGE!
  - b) Keep finger OUTSIDE trigger guard until directed to engage &/or fire
  - c) Be sure of YOUR target!
  - d) Ensure soldiers fire weapon at designated targets only.

---

## 9. Risk Management & Mitigation

Range OIC will review, add and update DA Form 2977, Deliberate Risk Assessment Worksheet.

THIS PAGE INTENTIONALLY  
LEFT BLANK

---

## 10. Reference Information, Reports & Forms

---

### INDEX

<b>TAB</b>	<b>NAME</b>
10A	Local Strip Map to Keller Army Community Hospital
10B	Local Strip Map to Saint Lukes Cornwall Community Hospital
10C	Open

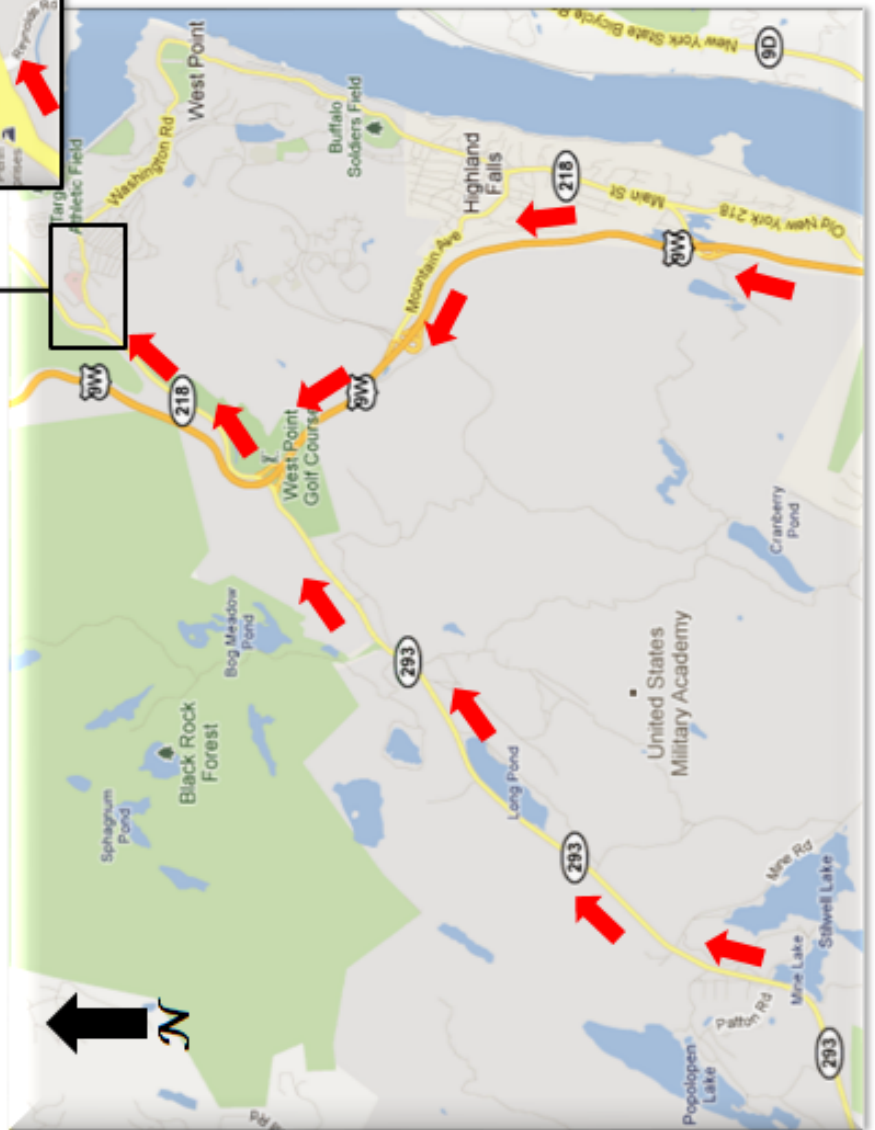
---



**DIRECTIONS**

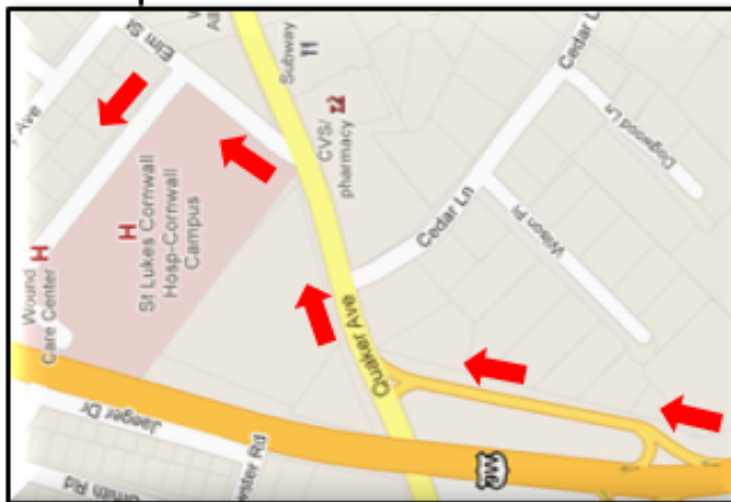
- North on Route 293 or 9W.
- Exit onto Route 218 N (approx. 1.2 miles to Washington Road Gate).
- Enter Installation via Washington Road Gate.
- Keller Army Community Hospital is on the left (approx. 3/10 miles from Washington Road gate).

**LOCAL STRIP MAP TO  
KELLER ARMY COMMUNITY HOSPITAL  
Phone #: (845) 938-4004**



Tab 10A – Strip Map – Keller Army Community Hospital

**LOCAL STRIP MAP TO  
ST. LUKES WOUND CARE CENTER  
&  
ST. LUKES CORNWALL HOSPITAL  
Phone #: (845) 458-4512**



**DIRECTIONS**

- North on Route 293 or 9W.
- Continue North on 9W to Cornwall.
- Exit 9W onto Quaker Ave exit.
- Turn left onto Elm Street.

Tab 10B – Strip Map to St. Lukes Cornwall Hospital