

## General Purpose Cleaning Solution

1. Light cleaning and surface mold: pour general purpose cleaner into gallon container and dilute to one gallon with water.
2. **If one gallon container is not available: pour about 1/4 of the bottle into a spray bottle contained in the Mold Buster Kit and dilute with water.**
3. **Heavy mold growth or dirt: use in concentrated form directly from the bottle.**

## Re-Growth

- If mold growth is present on a porous material surface cleaning may not remove all mold growth.
- Surface cleaning and sanitizing will not penetrate deep enough to kill all the hidden "root-like" parts of the mold colony, particularly if materials can not be adequately dried.
- Mold contamination below the surface may indicate additional concerns and should be assessed by DPW personnel.

**Directorate of Public Works  
United States Army  
Fort Wainwright, Alaska**



**Customer Service Phone Number:  
(907) 361-7069**

## Government Property

Care should be utilized when cleaning or sanitizing to avoid damage to government property.

Disposal of government property contaminated with mold growth, should only be undertaken with the permission of the property book holder and your chain of command.

## Disposal

- **Non-reusable items**—(paper towels, gloves, dust mask, etc.) used during the cleaning process should be sealed inside two plastic trash bags and discarded as regular trash.
- **Clean remediation equipment**—Clean goggles, brushes, etc. with warm soapy water, air dry and keep for reuse.

## Health Concerns

Questions concerning occupant health and risk assessment should be directed to the Bassett Army Community Hospital (BACH), Department of Public Health at (907) 361-5182.

## DPW Self Help

Bldg. 3566 Neely Rd.  
Fort Wainwright, AK 99703  
Phone: (907) 361-7322/6002

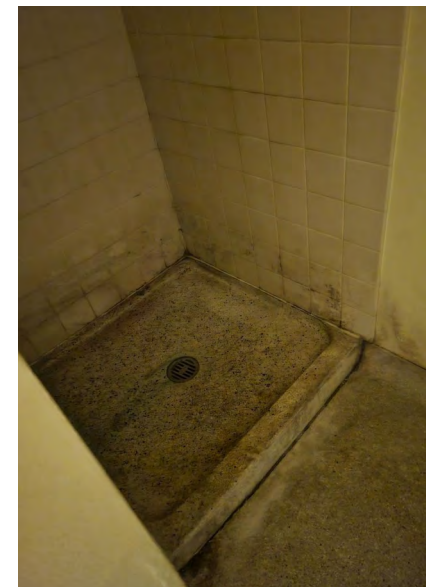
**Department of Public Works**  
Building 3015 Montgomery Rd.  
Fort Wainwright, AK 99703



SUBMIT A ROUTINE DMO AT  
[WWW.ARMYMAINTENANCE.COM/ARMA](http://WWW.ARMYMAINTENANCE.COM/ARMA)



# MOLD 101



For additional information please visit:  
[www.epa.gov/mold](http://www.epa.gov/mold)

## READ!

If visible mold growth is observed, it is crucial that steps are taken to prevent additional growth. The longer it grows, the more damage it can cause.

Mold growth measuring greater than 10 square feet may be the result of an underlying problem and should be assessed by trained personnel.

**If visible mold greater than 10 square feet is observed in a government facility, submit a Demand Maintenance Order (DMO) for mold to the Directorate of Public Works (DPW) Help Desk (907) 361-7069.**

### **\*\*IMPORTANT\*\***

**It is important to take precautions to limit your exposure to mold and mold spores.**

### **Personal Protective Equipment (PPE)**

- Complete mold cleaning with care. PPE should protect the eyes, hands, and respiratory system. Non-vented protective goggles, rubber gloves, and a N-95 face mask should be worn when cleaning small areas of mold growth.

### **Mold Prevention Techniques**

- Remove surface dust as part of your normal housekeeping. Dust contains particles that mold feeds on.
- Control sources of moisture and humidity.
- Fix plumbing leaks and other water problems as soon as possible. Dry all items completely.

## Remediation Guidance

- **Do not use bleach to clean mold**  
It is not effective at “killing” mold nor does it remove it from the surface. A simple soap solution or disinfecting cleaner should be used.
- **Dampen areas prior to cleaning.**  
Surface dusting should include the use of cleaners to avoid sweeping mold and allergens into the air.
- **Wash clothing.**  
Items used during remediation should be washed as soon as possible after mold clean-up is complete.

## OCCUPANT FACILITY MAINTENANCE

- Air Conditioning/Heating System must remain on at all times.
- Utilize the exhaust fan when taking a shower.
- Dry moisture on surfaces daily, if present.
- Call in a DMO to repair plumbing leaks and other water problems as soon as possible.
- Open blinds before leaving room.
- Remove dust, dirt, and grime weekly through routine housekeeping.
- Clean mold growth with general purpose cleaner, when it first appears. Do not use bleach to clean mold.
- Mold removal process - moisten, wipe, rinse and dry.
- Do not use blankets or covers to darken the room.
- Keep windows and doors closed at all times.

**CAUTION: If using a cleaning solution containing bleach DO NOT use other cleaning products which contain ammonia - it will produce harmful gases when mixed with bleach cleaners!**

## Cleaning Techniques

**Basic techniques appropriate for most surfaces are as follows:**

- Apply a detergent to the mold contaminated surface.
- Allow cleaner to soak for 3-5 min.
- Scrub to loosen mold.
- Wipe with clean, damp lint-free cloth.
- Repeat application if necessary.
- Allow area to air dry.

### **Non-Porous Surfaces**

- Plastic, tile, metal, etc. - use general purpose cleaner to remove the thin layer of surface mold. (dishwashing liquid and warm water is also appropriate).

### **Porous Surfaces**

- Flooring and wood - Apply general purpose cleaner, scrub with brush and let dry thoroughly.
- Disposal - lightly dampen mold contaminated materials with a soapy cleaner to minimize the dispersion of mold spores just prior to discarding.

