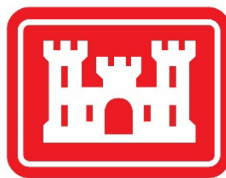


COMPLETION REPORT

Land Use Control (LUC) Implementation at Anti-Aircraft Range 90 MM Site, FTSW-002-R-01 FORT STEWART, GEORGIA

Prepared by:

U.S. Army Corps of Engineers, Savannah District



October 2022

ACTION SUMMARY

On September 26, 2022, the installation of 35 signs was completed at the Munitions area fence. The signs were located with a maximum 220 foot horizontal spacing. The top edge of each sign is 1 foot below the top of the wire-mesh. They face outward from the Munitions area and are attached to the wire-mesh in the same manner as existing signs (with wiring). Sequential numbering was added on the front and back for identification.

Latitude and Longitude coordinates for the newly installed signs have been collected and they are listed herein.

A sign layout map and representative sign photographs are enclosed.

Guidance for this work is found in: Final Non-Time Critical Removal Action Land Use Control Plan, Fort Stewart, Georgia, MMRP October 2013.

This work was conducted by Savannah District personnel (In-house) in coordination with the US Army Garrison, Directorate of Public Work Environmental Prevention & Compliance Branch at Fort Stewart.

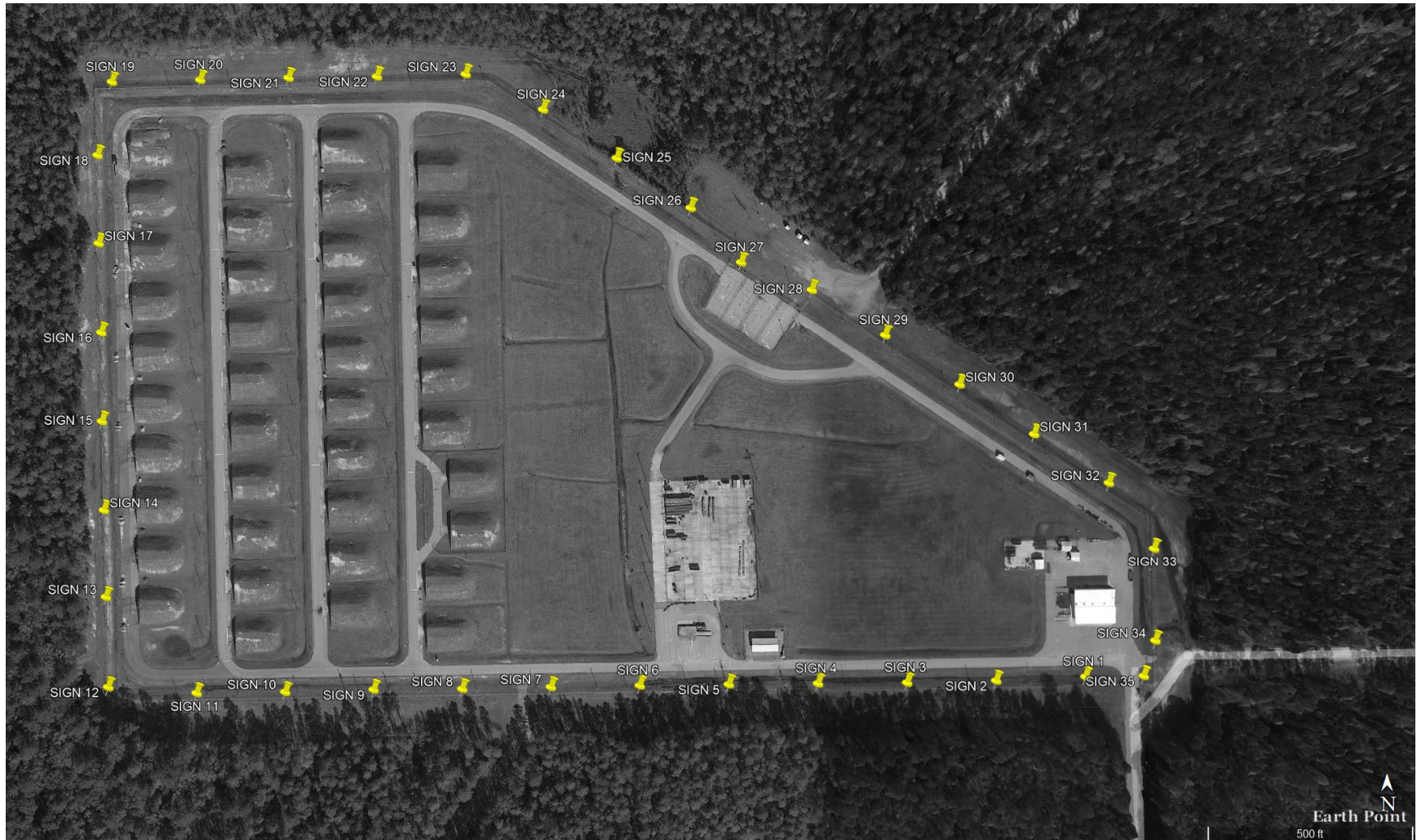
Annual inspection of the signs is scheduled to begin in September 2023. They will be conducted by Army Corps of Engineers Savannah District technical personnel (In-house). A Report listing sign conditions and recommendations for repairs (if these are needed) will be completed. The report will also include photographs of each sign.

Guidance for the Annual Inspection of the installed Land Use Control signage is found in State of Georgia Environmental Protection Division correspondence to Fort Stewart's Directorate of Public Works of July 21, 2020.

Label	Latitude	Longitude
FTSW-002-01	31.921266°	-81.656733°
FTSW-002-02	31.921239°	-81.657445°
FTSW-002-03	31.921226°	-81.658156°
FTSW-002-04	31.921217°	-81.658864°
FTSW-002-05	31.921209°	-81.659576°
FTSW-002-06	31.921201°	-81.660288°
FTSW-002-07	31.921192°	-81.660998°
FTSW-002-08	31.921179°	-81.661707°
FTSW-002-09	31.921172°	-81.662417°
FTSW-002-10	31.921156°	-81.663125°
FTSW-002-11	31.921147°	-81.663836°
FTSW-002-12	31.921199°	-81.664521°
FTSW-002-13	31.921799°	-81.664558°
FTSW-002-14	31.922393°	-81.664571°
FTSW-002-15	31.922996°	-81.664590°
FTSW-002-16	31.923599°	-81.664593°
FTSW-002-17	31.924202°	-81.664608°
FTSW-002-18	31.924802°	-81.664624°
FTSW-002-19	31.925300°	-81.664511°
FTSW-002-20	31.925312°	-81.663802°
FTSW-002-21	31.925327°	-81.663097°
FTSW-002-22	31.925335°	-81.662390°
FTSW-002-23	31.925349°	-81.661679°
FTSW-002-24	31.925111°	-81.661061°
FTSW-002-25	31.924779°	-81.660471°
FTSW-002-26	31.924443°	-81.659881°
FTSW-002-27	31.924073°	-81.659479°
FTSW-002-28	31.923886°	-81.658916°
FTSW-002-29	31.923580°	-81.658334°
FTSW-002-30	31.923246°	-81.657741°
FTSW-002-31	31.922910°	-81.657148°
FTSW-002-32	31.922581°	-81.656552°
FTSW-002-33	31.922136°	-81.656191°
FTSW-002-34	31.921511°	-81.656179°
FTSW-002-35	31.921273°	-81.656272°

(WGS 84 DATUM)

Layout view showing location of numbered signs installed at Munitions Site.



Photograph 1: General view of numbered sign installed at Munitions Site entrance.



Photograph 2: Close up view of numbered sign installed at Munitions Site entrance.

