



DEPARTMENT OF THE ARMY
U.S. ARMY INSTALLATION MANAGEMENT COMMAND
HEADQUARTERS, UNITED STATES ARMY GARRISON, FORT STEWART/HUNTER ARMY AIRFIELD
1791 GULICK AVE., BLDG. 709
FORT STEWART, GEORGIA 31314

AMIM-SHG-ZA (195)

MEMORANDUM FOR All Soldiers and Personnel on Fort Stewart/Hunter Army Airfield

SUBJECT: U.S. Army Garrison Fort Stewart and Hunter Army Airfield, Policy #9,
Designated Physical Training (PT) Traffic and Access Control Procedures

1. PURPOSE. To ensure the safety of Soldiers, Army Civilians, and Contractors during PT hours in designated areas.

2. APPLICABILITY. This policy applies to all Soldiers, Army Civilians, and Contractors working at Fort Stewart/Hunter Army Airfield.

3. POLICY.

a. It is the policy of this installation that all Soldiers conducting PT during the designated hours of 0630-0800, Monday-Friday, will be safe from vehicular traffic. It is also the policy of this installation that the Army Civilian and Contractor work force will have access to designated parking areas for assigned facilities of work during PT hours.

b. The 3rd Infantry Division annually publishes designated PT areas for Fort Stewart and Hunter Army Airfield. Designated Vehicle Check Points are identified at this time and operated during PT hours by designated units.

c. Soldiers shall be in designated parking spaces prior to 0630.

d. During the hours of 0630-0800, only Army Civilians and Contractors are authorized to proceed through Vehicle Check Points, but they must have a designated parking permit issued by the Directorate of Plans, Training, Mobilization, and Security to validate the requirement to proceed through Vehicle Checkpoints. Army Civilians and Contractors will use the most direct route possible to access designated parking places. Upon entry beyond the Vehicle Check Point, no exit is permissible until after 0800.

e. Army Civilians or Contractors that do not possess a parking permit will not be permitted beyond the Vehicle Check Point until after 0800.

f. With safety a primary concern:

(1) Vehicles will ensure headlights are on and at no time exceed 10MPH beyond the Vehicle Check Point.

AMIM-SHG-ZA (195)

SUBJECT: U.S. Army Garrison Fort Stewart and Hunter Army Airfield, Policy #9,
Designated Physical Training (PT) Traffic and Access Control Procedures

(2) Units will not conduct PT in parking lots. Units will utilize designated lawns, primary cordoned roadways, and fitness facilities. Soldiers will always wear reflective gear to enhance awareness to motorists traveling through parking lots and roadways.

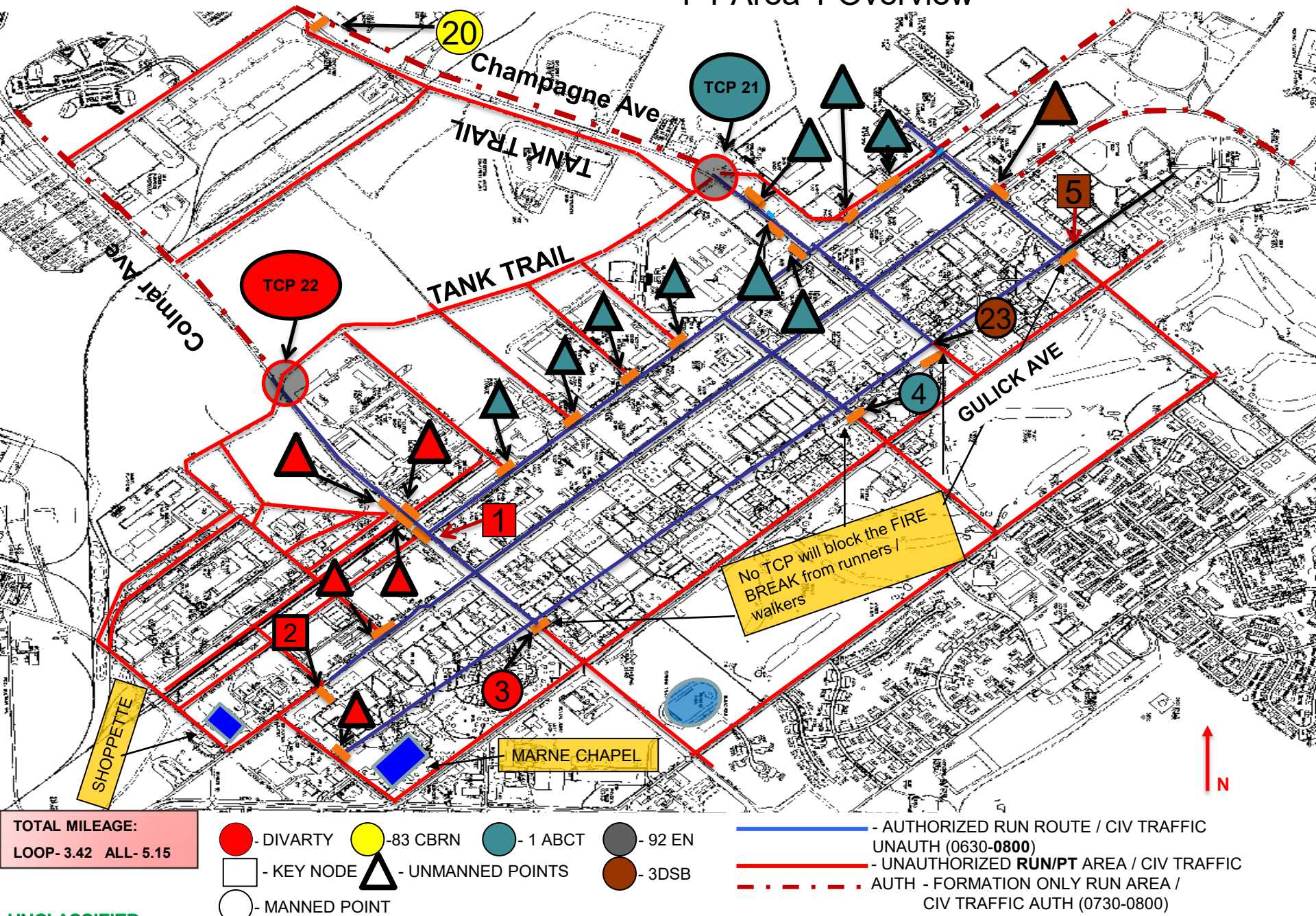
(3) All fire lanes will remain open for emergency vehicles and walking during PT hours.

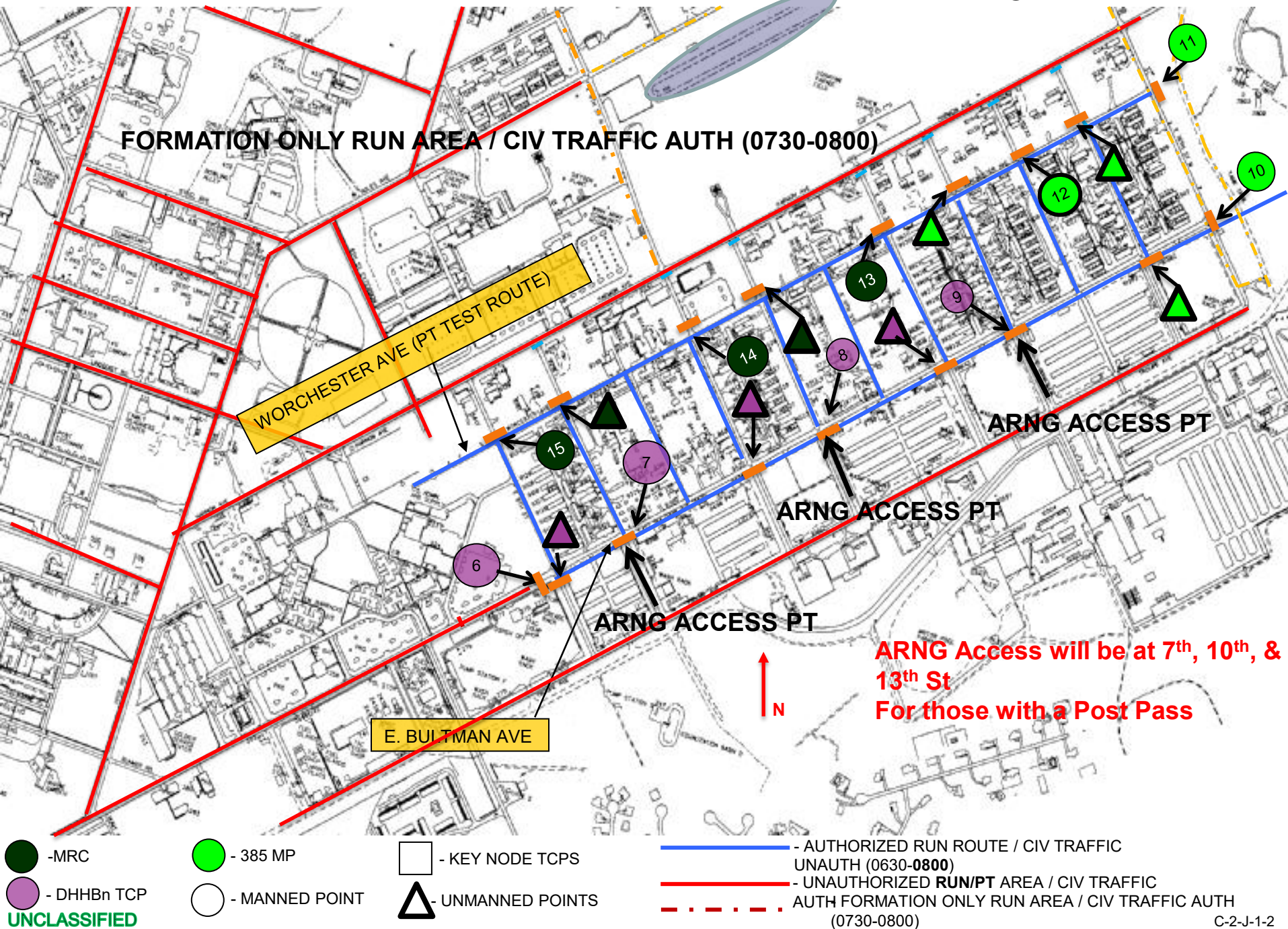
4. PROPONENT. The proponent for this policy is the Garrison Executive Officer, commercial (912) 767-2864.

Encl
Designated PT Routes

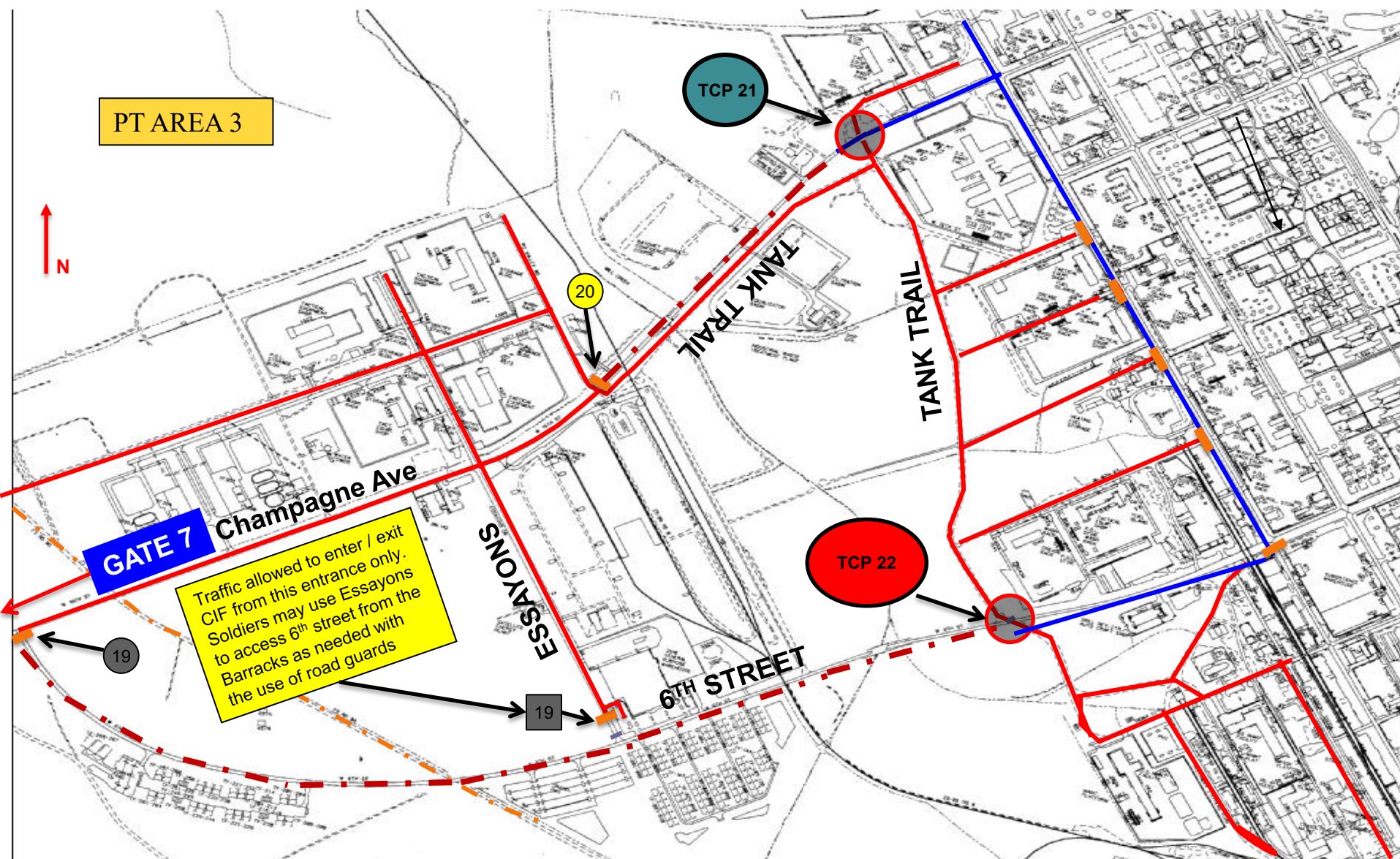
MARC J. AUSTIN
COL, IN
Commanding

PT Area 1 Overview



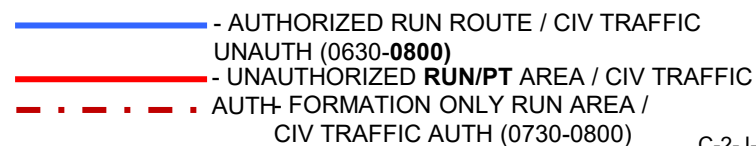
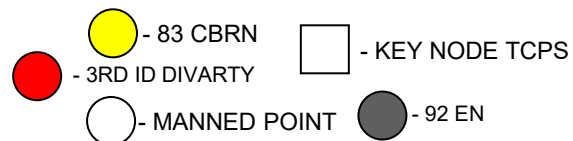


PT Area 3 Overview

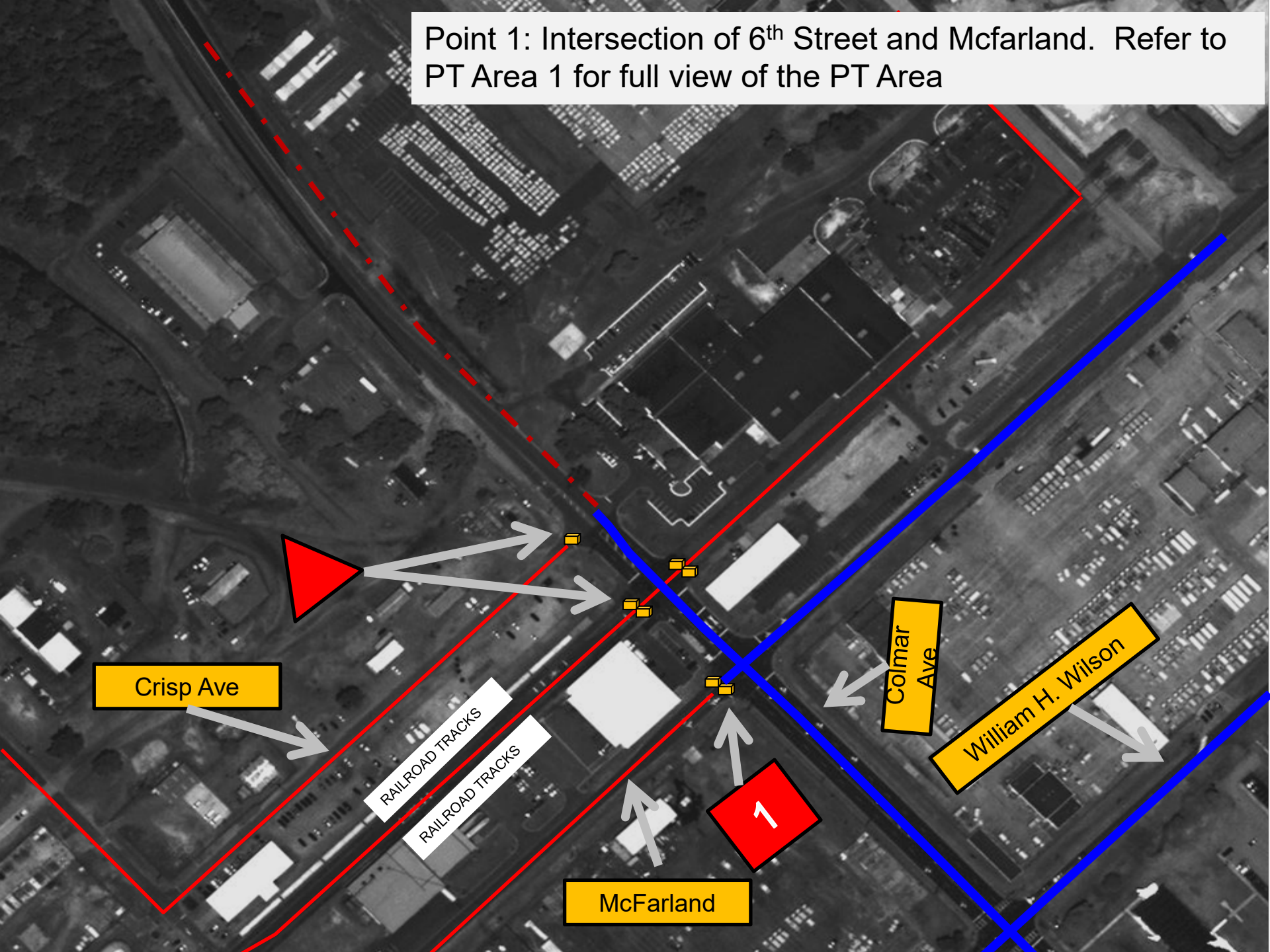


TOTAL MILEAGE:
LOOP- 3.98 ALL- 3.98

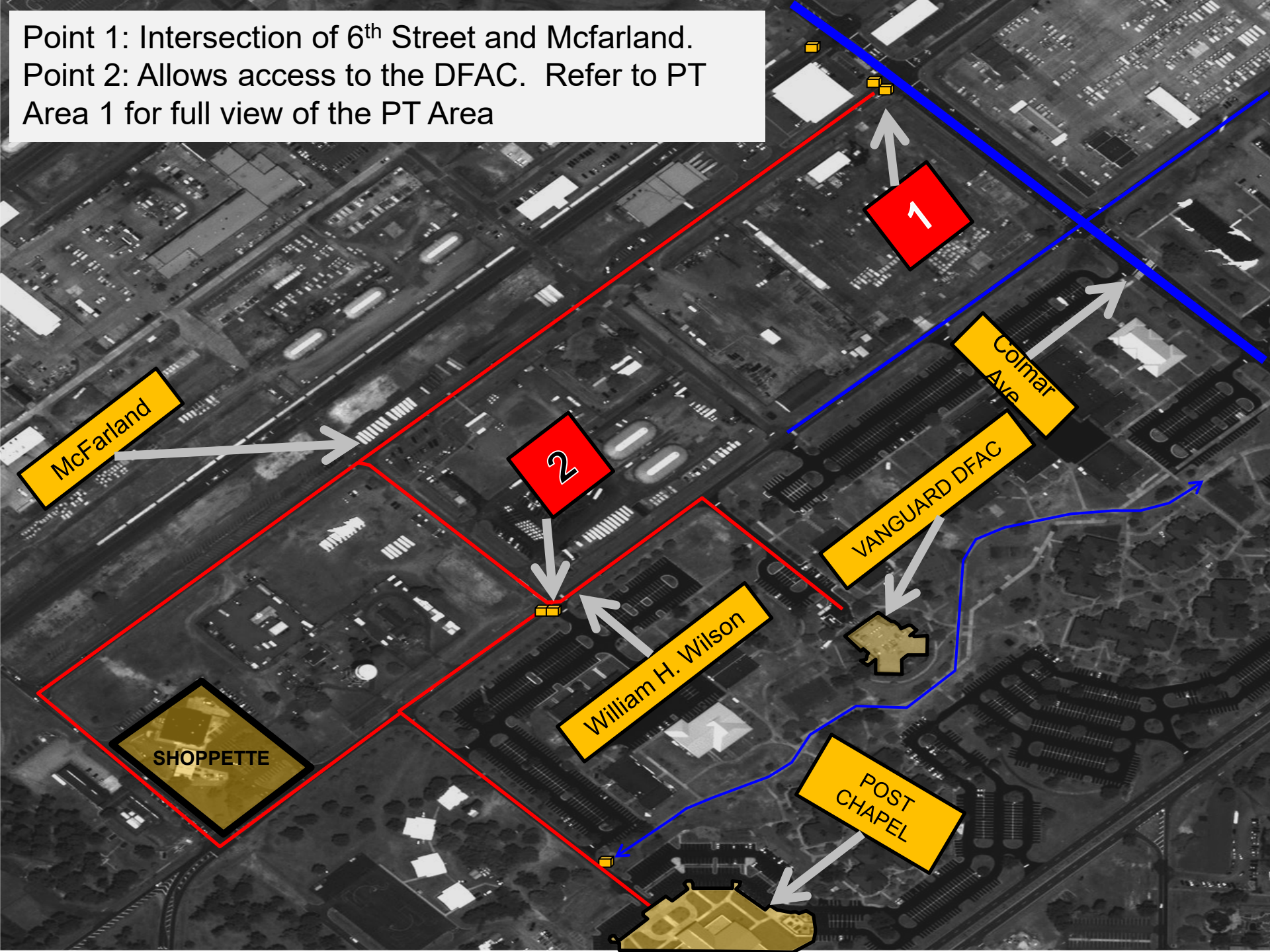
UNCLASSIFIED



Point 1: Intersection of 6th Street and McFarland. Refer to PT Area 1 for full view of the PT Area



Point 1: Intersection of 6th Street and McFarland.
Point 2: Allows access to the DFAC. Refer to PT
Area 1 for full view of the PT Area



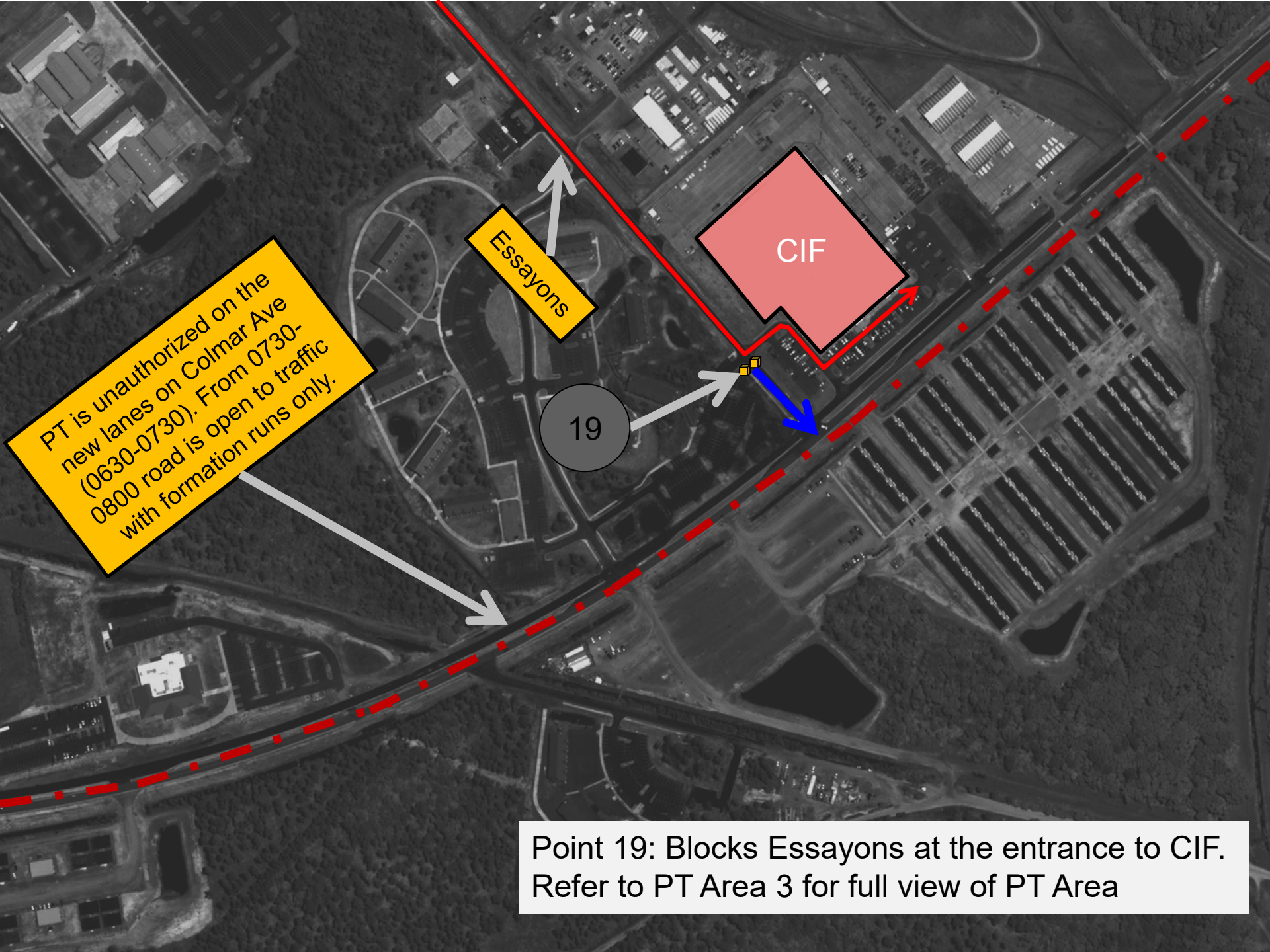
Point 19: Blocks intersection of Champagne Ave and Colmar Ave. Refer to PT Area 3 for full view of PT Area

Formation running is authorized on the tank trail. Road Guards with reflective vests and flashlights must be used for traffic control.

Champagne Ave to Gate 7

PT is unauthorized on the new lanes on 6th Street (0630-0730). From 0730-0800 road is open to traffic with formation runs only.

19



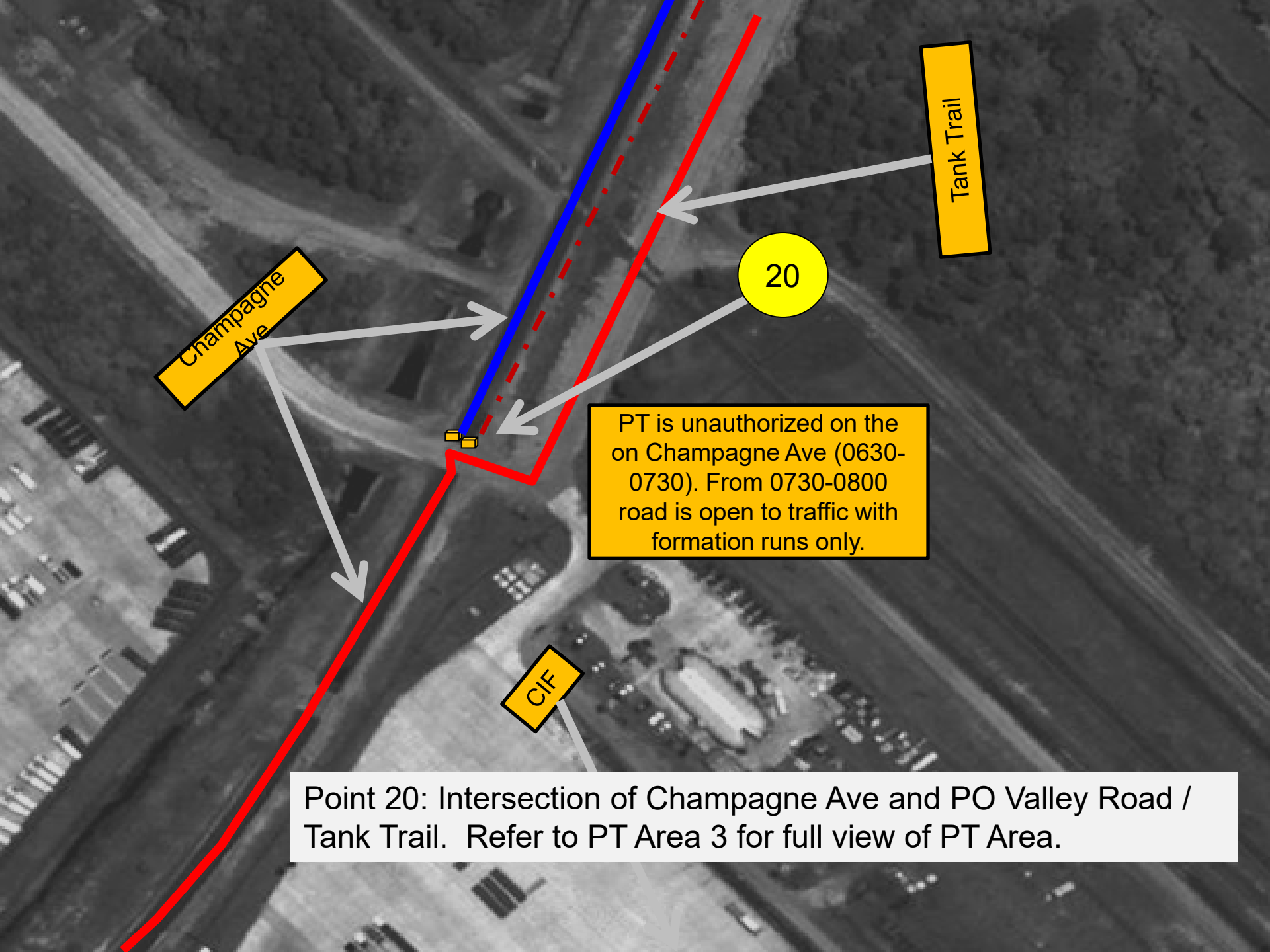
PT is unauthorized on the new lanes on Colmar Ave (0630-0730). From 0730-0800 road is open to traffic with formation runs only.

Essayons

CIF

19

Point 19: Blocks Essayons at the entrance to CIF. Refer to PT Area 3 for full view of PT Area



Champagne
Ave

Tank Trail

20

PT is unauthorized on the
on Champagne Ave (0630-
0730). From 0730-0800
road is open to traffic with
formation runs only.

CIF

Point 20: Intersection of Champagne Ave and PO Valley Road /
Tank Trail. Refer to PT Area 3 for full view of PT Area.