

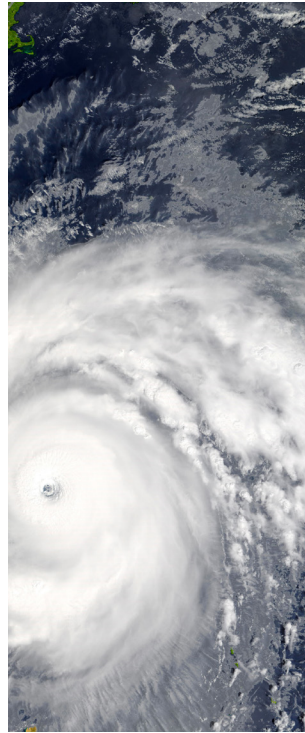
# Hurricane Season

## June - November

### Georgia Public Radio Updates

Tune in to the following FM stations for inclement weather information.

Albany	91.7
Athens	91.7/97.9
Augusta	90.7
Brunswick	88.9
Carrollton	90.7
Columbus	88.1
Demorest	88.3
Dahlonega	89.5
Ft. Gaines	90.9
Macon	89.7
Savannah	91.1
Tifton	91.1
Valdosta	91.7
Waycross	90.1



### Check these important links

- [www.ready.ga.gov](http://www.ready.ga.gov) to generate a customized ready kit and plan for you and your family
- [www.dot.ga.gov/DS/Emergency/Hurricane](http://www.dot.ga.gov/DS/Emergency/Hurricane) for evacuation route information for both the Atlantic and Gulf coasts
- [www.gema.ga.gov](http://www.gema.ga.gov) for emergency shelter information
- Follow [@GeorgiaEMA](https://twitter.com/GeorgiaEMA) for updates on Twitter

### Live in a coastal area?

Prepare. Plan. Stay Informed.

- Know your evacuation and shelter routes
- Keep your emergency supplies stocked
- Listen for tornado alerts and warnings
- Discuss and practice your family's emergency plans
- If you have pets, take them with you

### Recommended items for your ready kit

- A three-day supply of bottled water per person at one gallon per person per day
- Non-perishable food (canned, dried, etc.)
- First aid kit and prescription medicines
- NOAA weather radio and extra batteries (available at most retail outlets)
- Flashlights, batteries
- Flares, booster cables, tire repair kit, fire extinguisher
- Special items for infants, elderly or disabled family members
- Cash, traveler's checks, change
- Important family documents (copies of insurance policies, bank account records, etc.) in a waterproof, portable container
- Extra pet food, water and supplies for your pet(s)



Office of Strategic Communications  
One Georgia Center  
600 West Peachtree Street, N.W.  
Atlanta, GA 30308

[WWW.DOT.GA.GOV](http://WWW.DOT.GA.GOV)




Georgia Department of Transportation  
Office of Strategic Communications



[WWW.DOT.GA.GOV](http://WWW.DOT.GA.GOV)



 Georgia is affected by tropical systems from the Atlantic Ocean, Caribbean Sea and Gulf of Mexico. During a hurricane, wind gusts exceeding 74 mph and torrential rain can damage Georgia's shoreline. The direct hit of a hurricane can cause storm surge (a large dome of water more than 50 miles wide that sweeps across the coastline near the area where the hurricane makes landfall). Storm surge remains the greatest threat to human life but effective evacuations reduce the number of storm-related fatalities. The six coastal counties at highest risk of evacuation are Bryan, Camden, Chatham, Glynn, Liberty, and McIntosh.

Georgia's currently mandated evacuation plan is a joint effort between the Georgia Department of Transportation (GDOT), Georgia Emergency Management Agency (GEMA), Georgia State Patrol (GSP), local emergency management offices, local police departments and county sheriffs' offices.

Utilizing traffic control systems, radios, cameras, signage, web sites and reversible interstate lanes, GDOT implements several emergency plans for increased traffic headed inland during a mandatory evacuation.

## HERO units keep traffic moving



GDOT Highway Emergency Response Operators (HEROs) are dispatched to the I-16 corridor during a mandatory evacuation. The HEROs' highly-reflective yellow trucks are equipped with

tools and materials to respond quickly to accidents and clear roadways. HEROs are trained to manage incidents and assist motorists, maintaining safe and open roads.

## Coordinated Highway Assistance & Maintenance Program (CHAMP)

Coordinated Highway Assistance & Maintenance Program operations are available 24/7 to assist on the roadways, supporting first responders, motorists and evacuees. CHAMP covers Georgia interstates outside of metro Atlanta (except I-59 and I-24) and coordinate with HEROs (metro Atlanta) when covering adjacent borders. Call 511 to request a CHAMP or HERO.



## Changeable message signs provide updates

Electronic message signs along evacuation routes alert motorists of exit ramp closures and openings and locations for gas, food, and other necessities. These signs also indicate FM radio stations providing weather and traffic updates including shelter availability, travel times, alternate routes, and other important information.

## Emergency shelters

GEMA's website, [www.gema.ga.gov](http://www.gema.ga.gov) has information on the state's emergency shelters. Listen to Georgia Public Radio broadcasts to determine which shelters are open BEFORE traveling. Some shelters are American Red Cross-approved, some are pet-friendly, and some cater to families with special needs.

## Drop gate barricades

GDOT has installed drop gate barricades to keep drivers from heading eastbound on I-16 during a mandatory evacuation. The barricades are positioned at the I-16 eastbound entrance ramps and resemble a pair of football goal posts standing 20 feet tall. When an evacuation is ordered, gates are lowered.

## Call 511 for real-time travel information

GDOT's travel information number, 511, is accessible from any phone, anywhere in Georgia. During a mandatory evacuation, travel alerts are updated providing weather and traffic information, emergency numbers, and other important evacuee information. Live 511 operators are also available 24 hours a day, seven days a week to take calls by selecting option "1" or "9".



## Contraflow operations

### I-16 one-way driving guides

Normally I-16 carries traffic in both directions between Macon and Savannah. In the event of a mandatory evacuation from coastal Georgia, I-16 eastbound lanes will reverse to become "contraflow" lanes. All I-16 lanes will allow only westbound traffic from Savannah to U.S. 441 in Dublin, a distance of 125 miles.

### Paved median crossovers

To make sure the contraflow lanes are used to their maximum capacity, GDOT installed two median "crossovers" so that drivers can transition from the normal westbound lanes into contra-flow lanes. These median crossovers are east of I-95 near Savannah. Traffic accessing I-16 west of I-95 cannot cross over. A third median crossover between Macon and Dublin takes the traffic back from the contraflow lanes to the normal westbound lanes. From that point westward, I-16 functions normally to and from Macon.

