



Fort Riley | Camp Forsyth Landfill Area 2 MRS

MEC Awareness and Safety at Fort Riley

Slides will be available at the Fort Riley website:

<https://home.army.mil/riley/index.php/about/dir-staff/dpw/env-div>

April 2022

Agenda



- **Introductions**
- **Why We're Here**
- **Camp Forsyth Landfill Area 2 MRS**
- **MEC Discovery and Response**
- **MEC Safety**
- **Where to Learn More**
- **Questions and Answers**



Introductions



Contracting Team Partners

Fort Riley

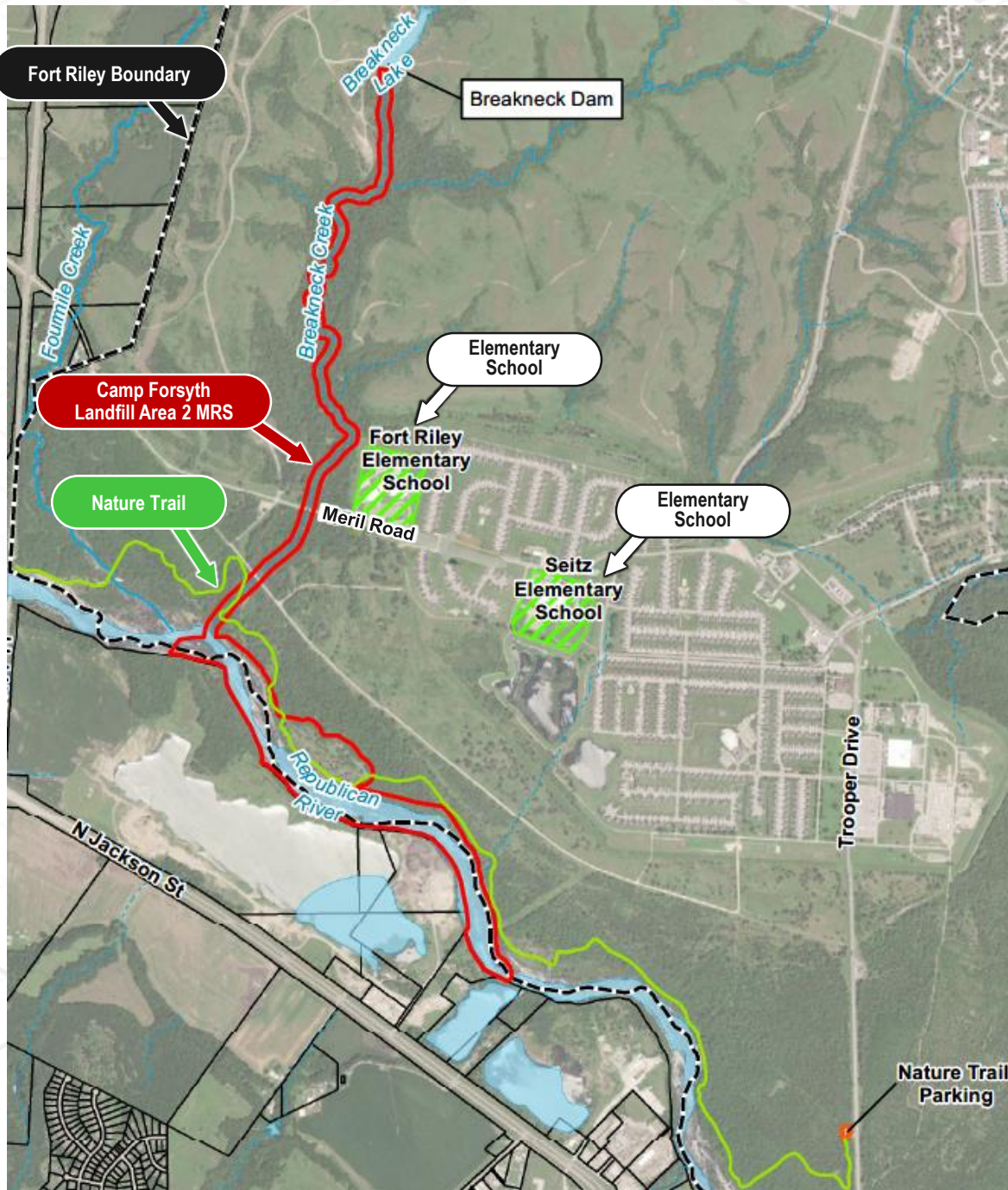
- Jeff Keating – Installation Restoration Program Manager
- Steve Elstrom – Director, Public Affairs Office
- Harry Hardy – Chief, Civil Law Division, SJA
- Alan Hynek – Chief, Conservation Branch, DPW
- Herb Abel – Chief, Environmental Division, DPW

U.S. Army Environmental Command

- Jonathan Harrington – Environmental Support Manager

Environmental Chemical Corporation (ECC) Arcadis

- Rob Wasserman – Project Manager
- Tim Woods – Assistant Project Manager
- Wayne Patterson – Camp Forsyth Task Lead
- Steven Perry – Public Relations Specialist
- Brian Guthrie – Senior Geophysicist



Why We're Here

We're here to:

- **Inform the public** that we will begin munitions and explosives of concern (MEC) removal activities Spring 2022
- **Raise awareness** about MEC at the Camp Forsyth Landfill Area 2 Munitions Response Site (MRS) and what to do if MEC is encountered
- **Protect you** and others who live, visit, and recreate here

What is MEC?

MEC stands for munitions and explosives of concern. MEC includes military munitions such as unexploded ordnance (UXO), discarded military munitions, or munitions constituents, like TNT.

What does MEC look like?

MEC can include grenades, landmines and mortar shells like. Examples are shown on the right.



2.36-in and 3.5-in Rockets



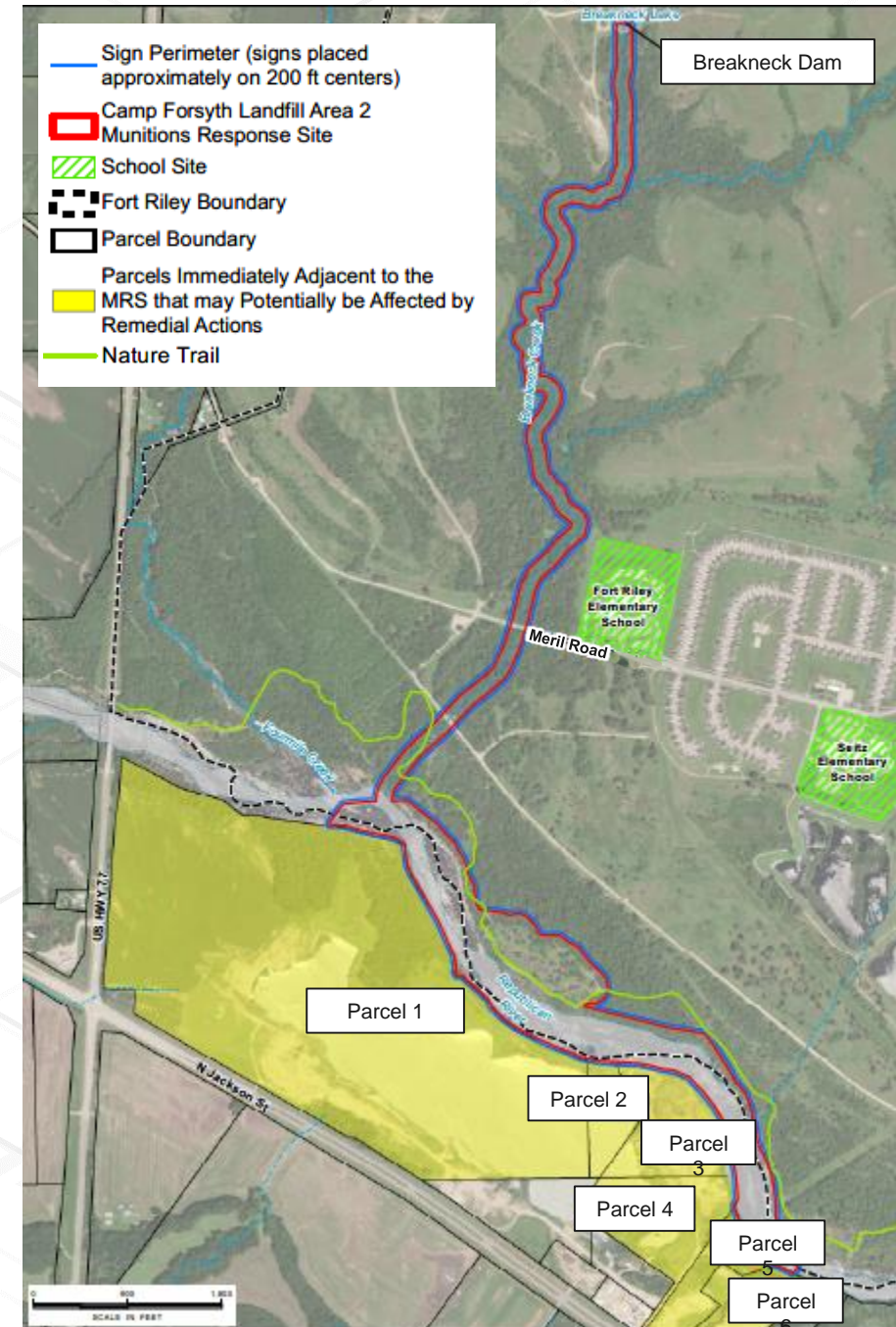
M12 Anti-Tank (Practice) Landmine



Camp Forsyth Landfill Area 2 MRS

Camp Forsyth Landfill Area 2 Munitions Response Site (MRS)

- 123.4 acres along lower southwestern boundary of Fort Riley
- Extends to southern banks of Republican River, into floodplain (Fort Riley property, accessible to public)
- Includes portions of Breakneck Creek
- Includes nature trail (accessible to public)
- Army conducted historical training maneuvers on and around MRS from 1930s through 1970s
- Two on-post elementary schools located near river and creek
- Six off-post parcels located along a portion of river where MEC was encountered





MEC Discovery and Response



MEC discovery at the Camp Forsyth Landfill Area 2 MRS

- Following flooding in 1993, MEC was discovered in spring 1994 along the Republican River—these MEC were detonated or disposed
- Later investigations found additional MEC, expanding the MRS footprint from its original size of 27 acres to its current size of 123.4 acres
- MEC has been encountered:
 - Along the nature trail
 - Adjacent to and in the Republican River and Breakneck Creek up to 4 feet below ground surface and 2 feet below sediment surface
- Concentrated areas of munitions debris were encountered in sediments and sandbars in the river



How we are protecting people

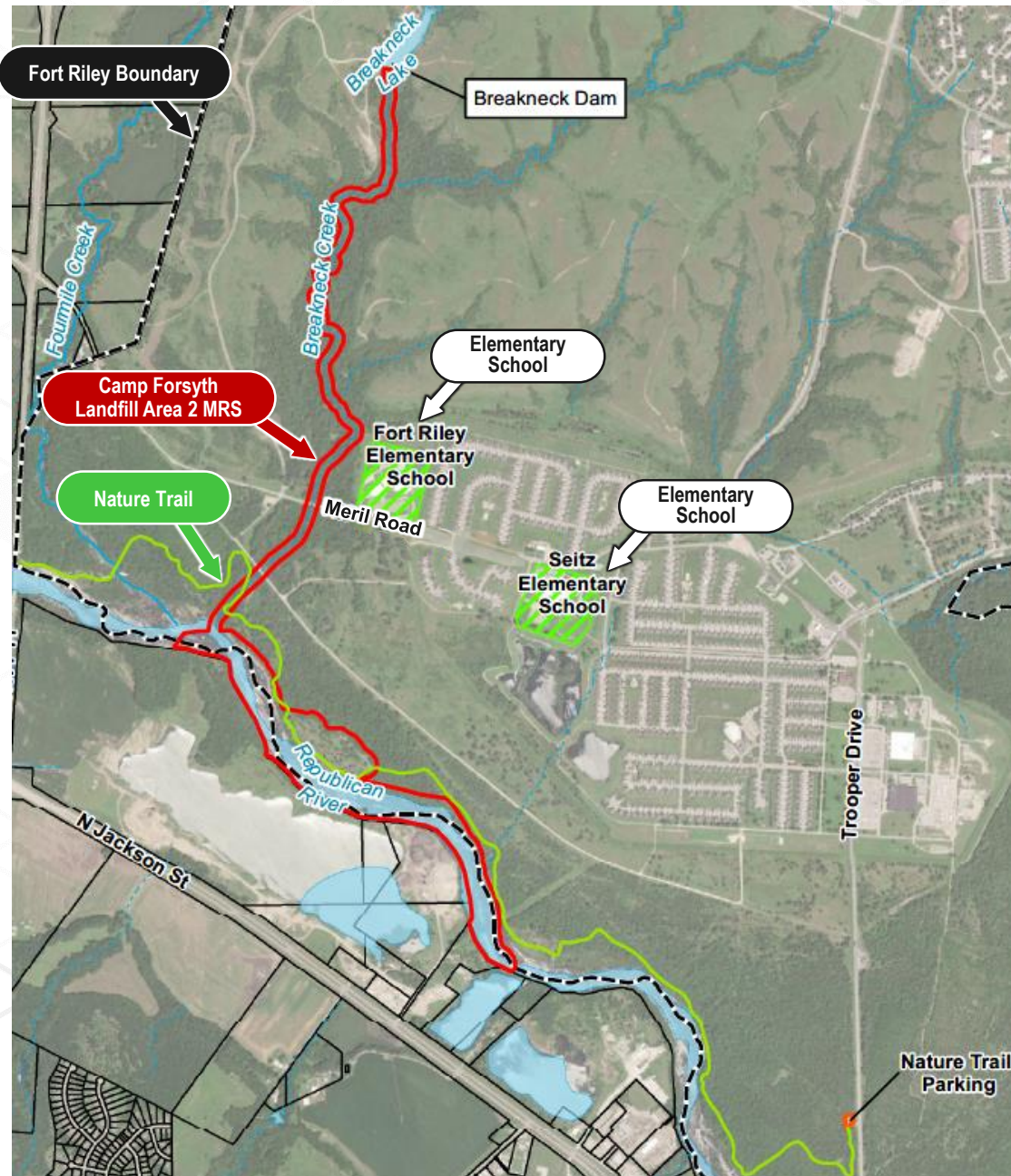
- Investigations to understand potential for encountering MEC; remove MEC found
- Proposed Plan that considered public comments for addressing MEC
- Advisory signs to alert people
 - 4 small signs around Fort Riley elementary school
 - 61 small signs between the nature trail and Republican River
 - 4 large signs at major MRS entrances
- Outreach plan to educate people about where MEC may be found at the MRS:
 - Fact sheets, info card, Facebook posts, school outreach, public notices and meetings

Small Sign



Large sign





MEC removal overview

- Vegetation burning and clearance to prepare for MEC removal within and surrounding MRS boundary
- Remove MEC to 4 feet below ground surface from portions of Breakneck Creek (and 75 feet on either side) and the Republican River upper bank areas
- Remove MEC to 2 feet below sediment surface from Republican River shoreline and sandbars



MEC removal process

- Vegetation will be cleared via burning and cutting to prepare for MEC removal
- Geophysical equipment to locate and detect MEC:
 - Digital Geophysical Mapping (DGM) – EM61-MK2 and EM61-Flex3 Towed Array positioned with GPS
 - Analog – Metal detector for areas inaccessible to DGM
- Senior UXO Supervisor oversees all field operations. Surface Sweep and Dig Teams consisting of qualified UXO personnel to identify and remove MEC
- Demolition – Blow-In-Place for any items determined to be unacceptable to move

EM61 towed array water survey



Intrusive investigation



EM61-MK2 survey



Demolition shot preparation

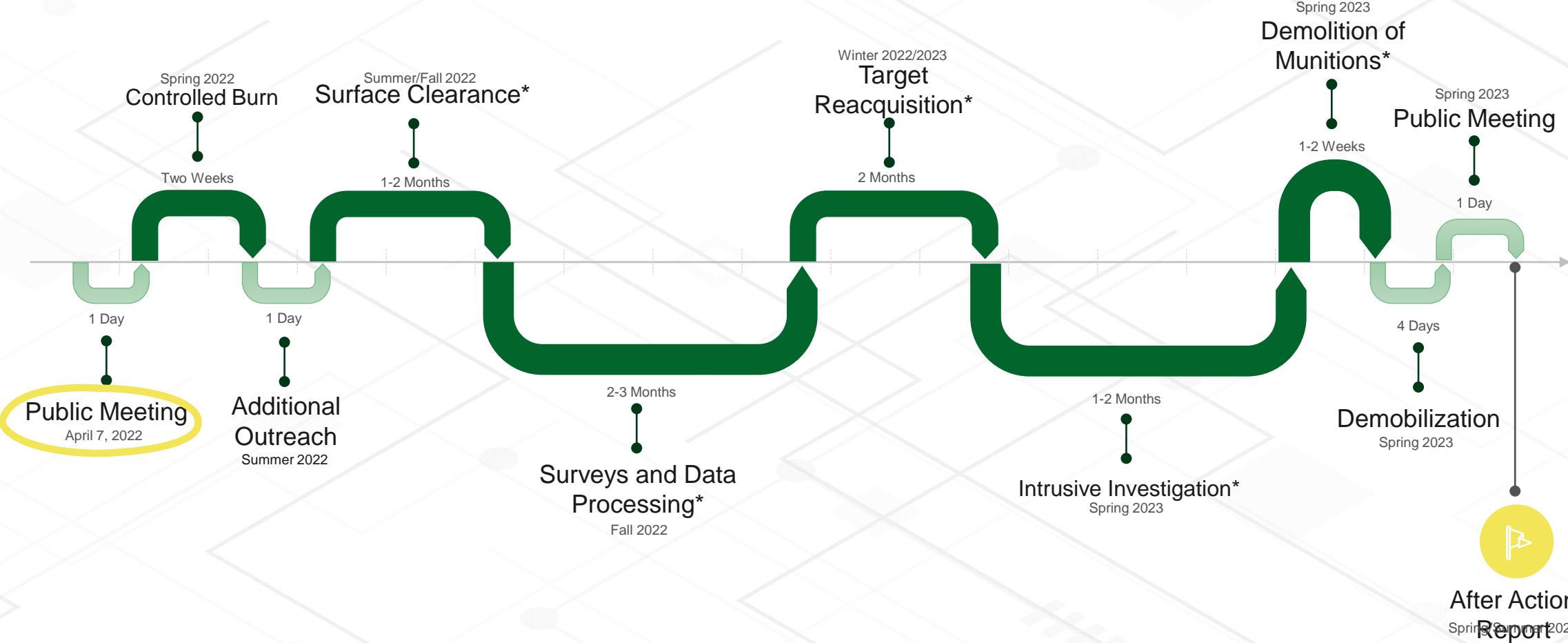


What this means for you

- The nature trail may be closed during work events
- Additional noise from potential detonation(s) may occur during daytime work hours
- Safety measures will be in place to isolate the public
- All forms of recreation will be prohibited in work areas during work hours
- River access may be limited or closed during work events
- Notifications through signage and social media
- Nearby schools outreach
- Annual reports



Field Activity Schedule



Schedule is subject to change based on weather and stream level fluctuations
*Activities will be conducted between 7 am and 5 pm and will not occur on weekends.



MEC Safety



What you can do to stay safe

- Be aware of sign postings
- Avoid areas that are posted
- Watch for updates about vegetation clearing and MEC removal activities
- Communicate with your neighbors, friends, and family
- Know the 3Rs of Explosives Safety: Recognize, Retreat, and Report to 911

 **R**ecognize MEC is dangerous.

 **R**etreat Don't touch, move, or disturb MEC. Leave the area.

 **R**eport Call 911.



Where to Learn More



Where can I get more information?

US Army's Explosive Safety Education website:

www.denix.osd.mil/uxo

Fort Riley Environmental Division:

785-239-6211 or usarmy.riley.imcom-hq.mbx.installation-restoration-program@army.mil

Fort Riley website:

<https://home.army.mil/riley/index.php/about/dir-staff/dpw/env-div>

Fort Riley Facebook page:

<https://www.facebook.com/FortRileyEnvironmentalOffice/>

Scan this QR code
for more info:





Questions & Answers