



FORT RILEY KANSAS

DUTY FIRST.
PEOPLE ALWAYS.
ALL ELSE FOLLOWS.

FY23 ECONOMIC IMPACT SUMMARY
1 OCT 22 – 30 SEPT 23



U.S. ARMY

Fort Riley

Fort Riley's history stretches back 170 years to the selection of the fort's site in 1852. First established to protect the movement of settlers over the Oregon-California and Santa Fe trails. Fort Riley's mission evolved after the Civil War to protecting the railroad and maintaining peace and stability among settlers and the Plains Indians. For over 30 years, Soldiers, including those of Custer's 7th Cavalry, used Fort Riley as a base to protect westward expansion.

In 1892, the School of Cavalry and Light Artillery was established that later evolved into the Mounted Service School in 1907 and the Cavalry School following World War I. Since that time, Fort Riley has served as a training center preparing Soldiers for all of America's major wars of the 20th century.

The Big Red One's history begins in 1917 when General John "Blackjack" Pershing arrived in France with the First American Expeditionary Force. The "Fighting First" led the way for American troops in World War I. The Division has a proud and honorable history that reflects the heirs of the American Soldier. Having fought in five wars, the 1st Infantry Division is one of the most decorated divisions in the U.S. Army.

For 67 years, the 1st Infantry Division has called Fort Riley home. Our central location and access to transportation allows us to quickly deploy forces around the world. Fort Riley proudly serves as the oldest FORSCOM installation, with the oldest and most storied Division, the Big Red One. Fort Riley Soldiers and Civilians are Brave, Responsible, and On Point for the nation.



Table Of Contents

Overview – Who We Are	2
Command Group	3
Unit Information	4
Big Red One Year of the NCO.....	6
Fort Riley Economic Impact	7
Economic Impact.....	8
Payroll	9
Service and Supplies.....	10
Construction	11
Intergovernmental Support Agreements (IGSAs).....	12
Veteran Expenditures.....	13
Education	14
Health Care	15
Population	16
Infrastructure	20
Deployment	21
Training	23
Safety	27
Housing	28
Innovative Cost Efficiencies.....	32
Partner Organizations.....	33
Soldier Transition.....	34
Quality of Life	36
FY23 Data Contributors.....	42

Overview – Who We Are



U.S. ARMY

Department of the Army

The U.S. Army's mission is to deploy, fight and win our nation's wars by providing ready, prompt and sustained land dominance by Army forces across the full spectrum of conflict as part of the joint force.

1st Infantry Division and Fort Riley

The 1st Infantry Division and Fort Riley build and maintain combat ready forces; on order, deploys these forces to conduct Decisive Action to fight and win in complex environments as members of a Joint, Inter-organizational, and Multinational (JIM) team.

Army Materiel Command

Army Materiel Command delivers logistics, sustainment and materiel readiness from the installation to the forward tactical edge to ensure globally dominant land force capabilities.

Installation Management Command

IMCOM delivers quality base support from the Strategic Support Area, enabling readiness for a globally responsive Army.



“Fort Riley - A Great Place to Live, Train, Deploy From, Come Home to and Retire”

Command Group

1st Infantry Division Command Group

Commanding General
Command Sergeant Major
Deputy Commanding General - (Support)
Deputy Commanding Officer - (Maneuver)
Chief of Staff

Major General John V. Meyer III
Command Sergeant Major Derek Noyes
Brigadier General Niave F. Knell
Colonel Terry R. Tillis
Colonel Brandon "Bull" Smith

Garrison Command Group

Garrison Commander
Garrison Command Sergeant Major
Deputy Garrison Commander

Colonel Michael J. Foote
Command Sergeant Major Jason R. Poulin
Mr. Steven W. Crusinberry

Major Subordinate and Tenant Commanders

1st Armored Brigade Combat Team (ABCT)
2nd Armored Brigade Combat Team (ABCT)
1st Infantry Division Sustainment Brigade
1st Infantry Division Artillery (DIVARTY)
1st Combat Aviation Brigade (CAB)
Irwin Army Community Hospital (IACH)
Dental Activity (DENTAC)
Army Field Support Battalion - Riley, 407th (AFSB)
Division HQ and HQ Battalion
10th Air Support Operations Squadron (ASOS)
97th Military Police Battalion
MICC Fort Riley – 923rd Contracting Battalion

Colonel Ian J. Lauer
Colonel Bryan M. Harris
Colonel Charles L. Montgomery
Colonel Jeffrey W. Pickler
Colonel Chad P. Corrigan
Colonel Anthony D. Gray
Colonel Rachelle A. Retoma
Lieutenant Colonel James E. Fager
Lieutenant Colonel Derek J. Raymond
Lieutenant Colonel Roland T. McElveen
Lieutenant Colonel Andrew L. Sergeant
Lieutenant Colonel Kwame O. Agyemang

Unit Information – 1st Infantry Division



Division Headquarters and Headquarters Battalion, 1st Infantry Division

The Division Headquarters and Headquarters Battalion (DHQB) consists of four companies whose mission is to support the 1st Infantry Division.



1st Armored Brigade Combat Team, 1st Infantry Division

The 1st Armored Brigade Combat Team (ABCT) consists of: 1st Battalion, 16th Infantry Regiment; 2nd Battalion, 34th Armor Regiment; 3rd Battalion, 66th Armor Regiment; 1st Squadron, 4th Cavalry Regiment; 1st Battalion, 5th Field Artillery; 1st Brigade Engineer Battalion; and 101st Brigade Support Battalion.



2nd Armored Brigade Combat Team, 1st Infantry Division

The 2nd Armored Brigade Combat Team (ABCT) consists of: 1st Battalion, 18th Infantry Regiment; 1st Battalion, 63rd Armor Regiment; 2nd Battalion, 70th Armor Regiment; 5th Squadron, 4th Cavalry Regiment; 1st Battalion, 7th Field Artillery Regiment; 82nd Brigade Engineer Battalion; and 299th Brigade Support Battalion.



Division Artillery, 1st Infantry Division

Division Artillery (DIVARTY) provides a single proponent within 1st Inf. Div. for standardized-fires certification and leader development while exemplifying effective Mission Command (Art 5.0); and supporting the seamless cross-attachment of units with common procedures and a shared understanding of the fires warfighting capabilities.



1st Sustainment Brigade, 1st Infantry Division

The 1st Sustainment Brigade consists of: HHC, 1st Sustainment Brigade; Special Troops Battalion, 1st Sustainment Brigade; and 541st Combat Sustainment Support Battalion.



Combat Aviation Brigade, 1st Infantry Division

The Combat Aviation Brigade (CAB) consists of HHC, CAB; 1st Attack Reconnaissance Battalion, 1st Aviation Regiment; 2nd General Support Aviation Battalion, 1st Aviation Regiment; 3rd Assault Helicopter Battalion, 1st Aviation Regiment; 601st Aviation Support Battalion; and 1st Heavy Attack Reconnaissance Squadron, 6th Cavalry Regiment.

Unit Information



KS Small Market, Stand-Alone Military Medical Treatment Facility, Defense Health Agency (DHA)

Irwin Army Community Hospital (IACH) provides quality healthcare to the Soldiers, families and retirees of the Central Flint Hills Region. The hospital operates Farrelly, Custer Hill and Aviation Health Clinics on Fort Riley.



Midwest Region Network Enterprise Center (RNEC)

The RNEC mission is to build and sustain, a community of Command, Control, Communications, Computers and Information Management (C4IM) service providers in the Midwest Region who are dedicated, innovative and adaptive, with positive customer relationships.



10th Air Support Operations Squadron (10 ASOS), USAF

The 10th Air Support Operations Squadron organizes, trains and equips combat ready Airmen to provide Liaison, TACP command and control, and precision strike to the First Infantry Division and the Joint Force.



Army Field Support Battalion - Riley (AFSBn-Riley), 407th AFSB

The AFSBn-Riley synchronizes, integrates and delivers Readiness and Enterprise Sustainment to the 1st Infantry Division, Fort Riley Kansas, the Garrison, and all tenant units within its area of operations.



United States Army Garrison Command (USAG)

USAG consists of the HQ and HQ Company; Emergency Services; Family, Morale, Welfare and Recreation; Human Resources; Plans, Training, Mobilization and Security; Public Works; Equal Employment Opportunity; Garrison Safety; Plans, Analysis and Integration; Public Affairs; Resource Management; and Staff Judge Advocate.



Civilian Human Resources Agency (CHRA) Southwest Region

The CHRA Southwest provides regional oversight and support to 18 Civilian Personnel Advisory Centers with a presence in 16 states. Home to the Army Benefits Center-Civilian providing world-wide benefits services and also home to the Civilian Personnel Records Center (CIVPRC).



Mission and Installation Contracting Command (MICC)

MICC-Fort Riley and the 923rd Contracting Battalion contracting activities provide 1st Infantry Division and the Fort Riley Garrison contracting solutions and expert acquisition business advice. On order, provides Operational Contracting Support to enable Army Unified Land Operations.

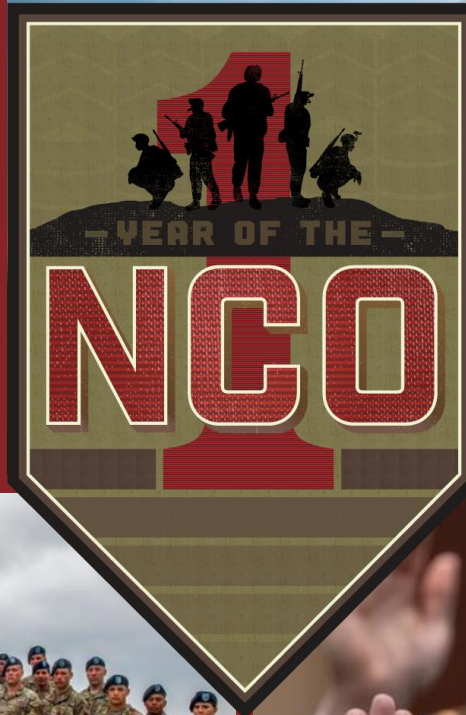


Army Military Pay Office (AMPO)

AMPO delivers and administers superior financial services in an efficient, effective and timely manner for Fort Riley Soldiers and their families while setting the standards in customer service as leaders throughout all of the Defense Finance Accounting System.

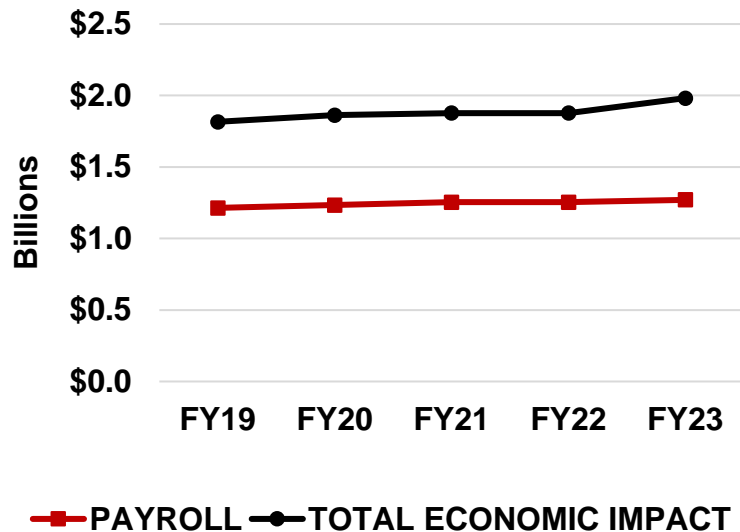
Big Red One Year of the NCO

The Big Red One Year of the NCO was the 1st Infantry Division and Fort Riley's 2023 program to further develop our NCO Corps and recognize their contributions, both personal and professional, to the 1st Infantry Division. The Big Red One recognizes the importance of our NCO Corps. NCO's education, fitness and leadership development were enhanced through 1st Infantry Division initiatives and events. We recognize our NCO's commitment to service and their willingness to make sacrifices on behalf of our nation. Big Red One NCOs are the pride of the 1st Infantry Division.



Fort Riley Economic Impact

Fort Riley's direct* fiscal year (FY) 2023 economic impact was \$1.98B



* Direct = No economic multipliers applied.

Changes and increases in economic impact totals from previous Fort Riley economic reports are a result of modifications and improvements in data collection sources.

Payroll	FY 19	\$1,177,539,103
Contracts: Supply and Service		\$154,587,440
Construction		\$71,975,453
VA Expenditures		\$208,217,000
Education		\$53,212,228
Health Care		\$86,316,820
TOTAL ECONOMIC IMPACT		\$1,751,848,044
Payroll	FY 20	\$1,213,173,027
Contracts: Supply and Service		\$193,725,857
Construction		\$69,149,755
VA Expenditures		\$233,107,000
Education		\$18,252,984
Health Care		\$87,485,500
TOTAL ECONOMIC IMPACT		\$1,814,894,123
Payroll	FY 21	\$1,233,834,108
Contracts: Supply and Service		\$186,388,809
Construction		\$70,306,292
VA Expenditures		\$249,732,355
Education		\$30,488,983
Health Care		\$91,498,377
TOTAL ECONOMIC IMPACT		\$1,862,248,924
Payroll	FY 22	\$1,253,407,932
Contracts: Supply and Service		\$189,043,001
Construction		\$73,153,408
VA Expenditures		\$261,320,046
Education		\$15,022,074
Health Care		\$85,019,804
TOTAL ECONOMIC IMPACT		\$1,876,966,265
Payroll	FY 23	\$1,270,517,791
Contracts: Supply and Service		\$212,139,652
Construction		\$35,359,599
IGSAs		\$41,258,977
VA Expenditures		\$304,274,663
Education		\$27,202,741
Health Care		\$89,861,376
TOTAL ECONOMIC IMPACT		\$1,980,614,799

Economic Impact

Fort Riley utilizes innovative solutions and creative best practices to mitigate funding/manning shortfalls, ensuring a high state of readiness in the Strategic Support Area of the 1st Infantry Division (FORT RILEY).

Payroll	\$1,270,517,791
Contracts - Service and Supply	\$212,139,652
Construction	\$35,359,599
IGSAs*	\$41,258,977
Veteran Expenditures	\$304,274,663
Education: Federal Impact Aid	\$27,202,741
Health Care	\$89,861,376

Total Direct Economic Impact	\$1,980,614,799
-------------------------------------	------------------------

With an accepted Congressional Budget Office (CBO) economic multiplier of \$2.2 per \$1 of direct expenditures, Fort Riley's full economic impact would be more than:	\$4,357,352,558
---	------------------------

* New item- Intergovernmental Support Agreement (IGSA). See pg. 12 for details.

Economic Impact – Payroll

Fort Riley is the largest employer in the Central Flint Hills Region. Additional government agencies and Kansas State University are also major employers in the region.

Military Base Pay*	\$888,751,765
Federal Civil Service Civilian Pay	\$213,619,961
Non-Appropriated Fund Civilian Pay**	\$13,274,626
Non-Federal Civilian Pay**	\$24,779,116
Retiree Annuities (DOD Office of the Actuary)	\$130,092,323
Total Payroll	\$1,270,517,791



* Military payroll provided by Army Military Pay Office; Federal civil service civilian pay information provided by RMO and G8.

** Non-appropriated fund civilian pay provided by DFMWR; Non-federal civilian pay information compiled by PAIO.

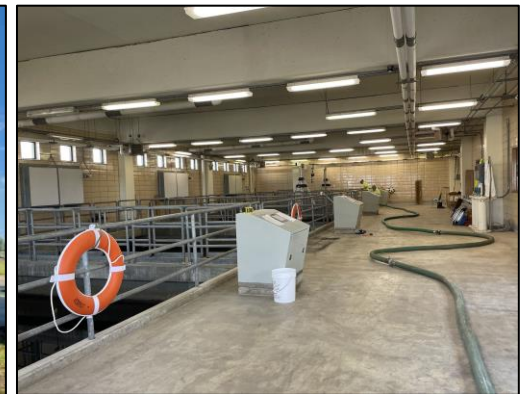
Economic Impact - Service and Supplies

Contracts: Service and Supply

Mission & Installation Contracting Command (MICC)	\$23,764,732
Energy Savings Performance Contract (ESPC)	\$4,864,775
Non-MICC Appropriated Funds (APF)	
- Supplies	\$69,937,199
- Services	<u>\$112,113,507</u>
Total Appropriated Funds	\$182,050,706
Non-MICC Non-Appropriated Funds (NAF)	
- Supplies	\$1,027,643
- Services	<u>\$431,796</u>
Total Non-Appropriated Funds	\$1,459,439

Total Contracts/Supplies/Services

\$212,139,652



Economic Impact – Construction

Appropriated Funds (AF):

Army Corps of Engineers Military Construction, payments made **\$21,268,000**

- Army Corps of Engineers contracts awarded \$130,381,160

- Army Corps of Engineers contracts completed \$50,944,125

Non-Army Corps of Engineers contracts **\$8,949,472**

Non-Appropriated Funds (NAF):

NAF capital purchase & minor construction **\$486,279**

Other Construction: **\$4,655,848**

Total Current Year Payments \$35,359,599



AF contract data provided by the U.S. Army Corps of Engineers; NAF contract data provided by DFMWR; Non-Army COE contract data provided by MICC.

Economic Impact – Intergovernmental Support Agreements (IGSAs)

Intergovernmental Support Agreements (IGSAs) allow Fort Riley to strengthen ties with community, the State of Kansas and stakeholders to form mutually beneficial partnerships, improve mission readiness and reduce costs.

IGSA

- Bulk Salt Purchasing Agreement with Manhattan **\$98,977**
- Archeological Site Surveys with Kansas State University **\$225,000**
- D-B CIRM with USD 475 **\$40,935,000**

Total Current Year Payments

\$41,258,977

Design – Build, Purchasing Cooperatives and Indefinite Quantity Building and Infrastructure Capital Improvement, Repair and Maintenance (D-B CIRM) IGSA

Fort Riley and Unified School District (USD) 475 signed their second Intergovernmental Support Agreement which will enable D-B CIRM Projects in a more efficient and cost-effective manner. This IGSA creates the potential to increase the number of projects yearly due to cost and time efficiencies. In addition, USD 475 will use a portion of fees received for capital improvements, improving quality of life for students and staff. USD 475 will manage projects on the installation and will work in concert with Fort Riley's DPW to ensure compliance with all applicable standards, laws and regulations.



Economic Impact - Veteran Expenditures*



Compensation and pension expenditures include dollars for the following programs: Veterans' compensation for service-connected disabilities; dependency and indemnity compensation for service-connected deaths; veterans' pension for nonservice-connected disabilities; and burial and other benefits to veterans and their survivors.

Medical Care expenditures include dollars for medical services, medical administration, facility maintenance, educational support, research support and other overhead items. Medical care expenditures do not include dollars for construction or other non-medical support.

	<u>Compensation & Pension</u>	<u>Education & Vocational Rehabilitation/ Employment</u>	<u>Insurance & Indemnities</u>	<u>Medical Care</u>	<u>Total Expenditures</u>
Clay County	\$8,628,688	\$383,449	\$46,940	\$4,174,038	\$13,233,115
Dickinson County	\$20,032,501	\$1,041,799	\$110,923	\$9,734,998	\$30,920,221
Geary County	\$72,981,612	\$8,743,579	\$186,434	\$26,547,736	\$108,459,361
Morris County	\$3,952,607	\$120,960	\$0	\$2,654,208	\$6,727,775
Pottawatomie County	\$10,530,484	\$753,876	\$13,368	\$8,261,223	\$19,558,951
Riley County	\$53,405,312	\$7,725,050	\$155,696	\$19,079,505	\$80,365,563
Saline County	\$18,490,524	\$1,686,017	\$75,565	\$17,397,036	\$37,649,142
Wabaunsee County	\$3,534,409	\$188,144	\$10,181	\$3,627,801	\$7,360,535
Total	\$191,556,137	\$20,642,874	\$599,107	\$91,476,545	\$304,274,663

Regional veteran population and expenditure data provided by the Department of Veterans Affairs; Geographic Distribution of VA Expenditures for Fiscal Year 2022, the National Center for Veterans Analysis and Statistics, Department of Veterans Affairs

* Figures are as of April 2023. FY23 data will be available in APR2024.

Economic Impact – Education

Dependents of Soldiers and federal employees account for 5,997 students, or 20% of the total student population in the Central Flint Hills Region.



Payments from Federal Impact Aid

USD 475 (Geary County)	4,345 Students	\$26,903,208
USD 383 (Manhattan-Ogden)	920 Students	\$114,120
Other Districts	732 Students	\$185,413

Total Payments from Federal Impact Aid	\$27,202,741
---	---------------------

Federal Impact Aid data provided by
DFMWR CYS School Liaison Officer.

Economic Impact – Health Care

Irwin Army Community Hospital (IACH) is a 47-bed hospital designed with the latest medical engineering technology to deliver the best care to our Big Red One Soldiers and mission partners, their families and our retirees.

IACH serves over 41,824 beneficiaries every year. On a typical day, it sees 1,658 clinical patients, 63 ER visits, fills 750 prescriptions, runs 750 laboratory procedures, 169 vaccinations, performs 6 surgical cases, and delivers 2 babies.



Outsourced (off-post) Patient Care

	<u>Number of Patients</u>	<u>Amount Paid</u>
Total outpatient care	39,210	\$54,238,599
Total inpatient care	1,336	\$14,391,158
Total outsourced patient care	40,546	\$ 68,629,757

Health Care

Hospital expenses (minus construction, payroll, contracts)	\$21,231,619
Outsourced patient care (see above)	\$68,629,757
Total health care expenses	\$89,861,376

Health care data provided by DHA, RM Division and includes Dental Activities.

Population

Population data reflects the surrounding Flint Hills Region including Clay, Dickinson, Geary, Morris, Pottawatomie, Riley, Saline and Wabaunsee Counties.



Military* (Army)		13,772
Officers	1,519	
Warrant Officers	445	
Enlisted	11,808	
Military (Air Force)		142
Family Members		15,057
On Post	8,773	
Off Post	6,284	
Veterans**		26,031
Retirees	4,757	
Civilian Employees (including Contractors)		4,930
Total Population		59,932

* Military population data provided by G-1 Strength Management;
family member population data provided by DHA – DEERS.

** Veteran/retiree data provided by the Department of Veterans Affairs.

Population - Civilian Workforce

Department of the Army Appropriated Fund Employees	2,093
Non-Appropriated Fund Employees	418
Other Federal Employees	415
Other Civilian Employees (including Contractors)*	2,004
Total Civilian Employees	4,930

* Other Civilian Employee Breakdown (including Contractors)

10th ASOS, USAF	6	Division G2	1
Army Military Pay Office (AMPO)	4	Division G4	195
Army & Air Force Exchange Service (AAFES)	190	DPW - Energy and Conservation Branch	2
AAFES Concessionaires	41	DPW - Environmental Division	3
Armed Forces Bank, N.A	5	DPTMS, Various Training Sites	119
Army Field Support Battalion (AFSBn)	284	Equipment Concentration Site #33	4
Aviation Field Maintenance Activities	31	Envision	3
Navy Federal Credit Union	8	InterContinental Hotel Groups (IHG)	21
Camp Funston KSARNG	9	Maneuver Area Training Equipment Site	12
Commissary (DeCA)	41	Skookum	62
Corvias	164	United Services Organization (USO)	5
CWTSato Travel	2	USD 475 On-Post Personnel	538
DHA (IACH) / DENTAC	171	Vyve Broadband	6
DHR – Various Locations	43	742 nd Military Intelligence Bn	5
DFMWR	29		
		Total Other Civilian Employees	2,004

* Contractor numbers do not include many service contractors who work less than full time or whose physical office location is other than Fort Riley, such as landscaping, maintenance, custodial, etc.

Population – Military Retirees



Military retirement population numbers include members of the Army, Navy, Marine Corps, Air Force and Coast Guard.

Expenditures include non-disability retired pay, disability retired pay, retired pay for reserve service, survivor annuity programs and special compensation programs for certain disabled retirees.



	<u>Population</u>	<u>Expenditures</u>
Clay County	218	\$5,543,259
Dickinson County	511	\$12,943,712
Geary County	1,792	\$44,405,205
Morris County	94	\$2,378,184
Pottawatomie County	263	\$7,890,250
Riley County	1,378	\$44,355,891
Saline County	374	\$9,437,622
Wabaunsee County	127	\$3,138,200
Total	4,757	\$130,092,323

Regional retiree population data provided by DOD Office of the Actuary.

Population - Veterans

Population data includes non-retired veterans registered with and eligible for benefits from the Department of Veterans Affairs. VA expenditures include compensation and pension; education, vocational rehabilitation and employment; insurance and medical expenditures.

	<u>Population</u>	<u>Expenditures*</u>
Clay County	857	\$13,233,115
Dickinson County	1,935	\$30,920,221
Geary County	10,308	\$108,459,361
Morris County	447	\$6,727,775
Pottawatomie County	1,719	\$19,558,951
Riley County	6,472	\$80,365,563
Saline County	3,851	\$37,649,142
Wabaunsee County	442	\$7,360,535
Total	26,031	\$304,274,663

* See page 13 for additional veteran expenditure data.

* Figures are as of April 2023. FY23 data will be available in APR2024.

Regional veteran population and expenditure data provided by the Department of Veterans Affairs; Geographic Distribution of VA Expenditures for Fiscal Year 2022, the National Center for Veterans Analysis and Statistics, Department of Veterans Affairs



Infrastructure

Fort Riley has access to 34,000 additional training acres (prairie land) at the Great Plains Joint Training Center in Salina, Kansas, 60 miles away. This area is the largest inert bombing range east of the Rockies and provides exceptional joint training opportunities for heavy forces' collective, distributed, Joint (10th Air Support Operations Squadron - JTACS/FOs and Joint Fires), Inter-organizational and Multinational (JIM) training in coordination with our Kansas National Guard partners.

	<u>Acreage</u>	<u>% Total Acreage</u>
Training Area	69,422	76%
Impact Area	13,390	15%
Maneuver Lane (Fixed Gunnery Ranges)	6,365	7%
Major Water Bodies (Floating Bridge Site)	262	<1%
Military Ranges	2,185	2%
Total Acreage for Training	91,624	100%



Total Installation Acreage = 101,732.91

Buildings excluding Housing

- Number of Buildings	910
- Historical Buildings:	156
- Square Footage w/o housing	12,066,773.19

Transportation Network (Miles)

- Paved (Cantonment Area)	155
- Unpaved/Dirt (Training Area)	180
- Tank Trails	169
- Range Roads	148
- Railroad Tracks	16

Total Miles **668**



Infrastructure information provided by DPW and DPTMS.

Deployment – Rail Yard

When driving past the rail tracks in Camp Funston, it's not uncommon to see a red locomotive pulling cars along the tracks for several hours a day and multiple weeks at a time. Army Field Support Battalion (AFSBn)-Riley railhead staff operate as a two-man team to ensure the equipment brigades use and need is available to make it safely to their training installation or port destination for each deployment.

- 14 loading spurs, 6 double-wide end loading ramps, 2 single-wide loading ramps and 3 side loading ramps
- Light banks:
 - 12 stadium lights in main rail yard (1 ea. Northside, 1 ea. Southside, 5 ea. Eastside, and 5 ea. Westside yards)
 - 3 stadium lights in east rail yard (1 ea. Eastside, 1 ea. Southside, and 1 ea. on the Westside)
 - 21 half-high lights in east rail yard (5 ea. of Eastside, 5 ea. in the center, 10 ea. on Westside) These four spurs have the lights that illuminate at car deck height to assist tie down of vehicles after dark
 - 10 stadium lights along the Southside of the interchange yard.
- Reinforced docks with shock absorbers – three concrete docks for loading equipment that will be shipped by truck, two on Custer Hill and one at Camp Funston, and three portable docks for loading equipment that will be shipped by truck at Camp Funston
- Movement Control Center and Control Tower
- 3 engines to move train to loading facilities
- Weighing facilities
- Side Rail holds 455 ea. 89' cars



Deployment capability data provided by Army Field Support Battalion, 407th AFSB – Riley.

Deployment – Airfields

Fort Riley's robust deployment capability is supported by 3 local airfields available for simultaneous use.

Manhattan Regional Airport features a 460,000 sq. ft. Army Deployment Ramp which allows Fort Riley to use the facility as a Rapid Deployment Facility for a Quick Reaction Force (QRF) mission in support of Homeland Defense. The apron area has been designed to allow two C-17 aircraft to park simultaneously.

- Primary commercial service airport – more than 70,000 enplanements per year with daily regional jet service provided by American Airlines to Dallas Fort Worth (DFW) and Chicago O'Hare (ORD).
- Two runways – The primary runway is 7,400' x 150' and the crosswind is 5,000' x 75'. Instrument approaches into the primary runway afford flying in inclement weather as well as for training. Class D airspace is controlled by an on-site air traffic control tower.
- Upgrades on the primary runway started in September 2022 and were completed in September 2023.

Salina Regional Airport serves as a forward operating location for military aviation units deploying to Saline County and the Great Plains Joint Training Center operated by the Kansas National Guard.

- Primary runway is 12,300 feet long
- Crosswind runway is 6,500 feet long
- 2.7 million sq. ft. of ramp space
- Excess of 10,000 sq. ft. of hangar space
- Primary runway, taxiway and aircraft parking apron can support all USAF transport aircraft in the AMC fleet

Topeka Regional Airport (Forbes Field) has two runways and more than 2 million square feet of apron space available for transient military, general aviation and commercial aircraft.

- Primary runway is in excess of 12,800 feet long
- Crosswind runway is 7,000 feet long



Training

Fort Riley boasts a recently upgraded Douthitt Gunnery Complex with state-of-the-art operating system hardware, software, cameras, instrumentation sets and communication systems. 43 Integrated Player Units (IPU) sets allow simultaneous gunnery for a Company Team. Hardware is interchangeable between ranges to significantly increase unit throughput allowing M1 Abrams, M2 Bradley and AH64 crews to train more efficiently.

Total Army Training Partners*

1-113 IN (IA ARNG)	KSU ROTC
1-161 FA Bn (KS ARNG)	1-133 IN (IA ARNG)
2-130 FA Bn (KS ARNG)	1-113 CAV (IA ARNG)
891 EN Bn (KS ARNG)	1-168 IN (IA ARNG)
45 IBCT (OK ARNG)	1-134 CAV (NE ARNG)
5 th EN (AD FLWMO)	1-635 AR (KS ARNG)

*List does not include all units that train on Fort Riley

Major Systems Training on Fort Riley



M1A2 Abrams



M2A3 Bradley



AH-64D Apache



CH-47 Chinook



M109 Paladin



M113 APC



UH-60 Blackhawk

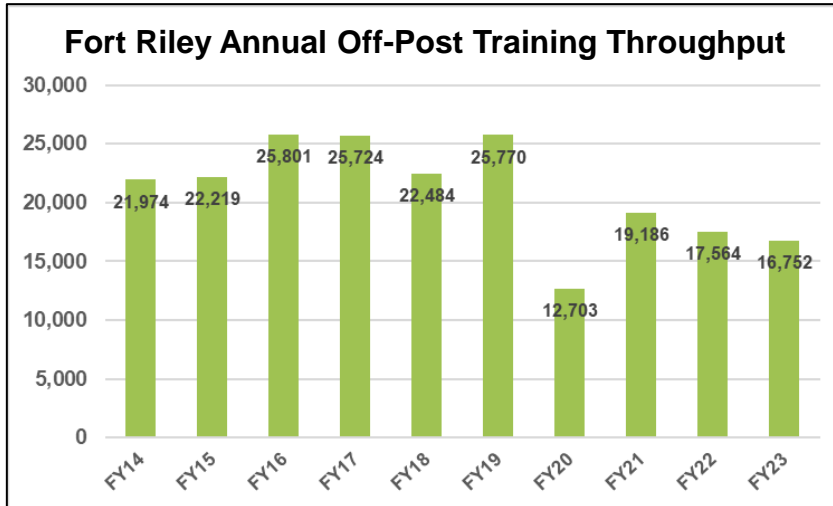


MQ-1 Gray Eagle

Training data provided by DPTMS and 11D G4.

Training - Regional and Joint

Fort Riley's training environment consists of a complete, modern, state-of-the-art, full spectrum training capability (live, virtual, constructive, gaming in the Integrated Training Environment) which supports "Total Army," Joint, Inter-organization and Multinational (JIM) training for the Midwest, our state, regional and local partners.



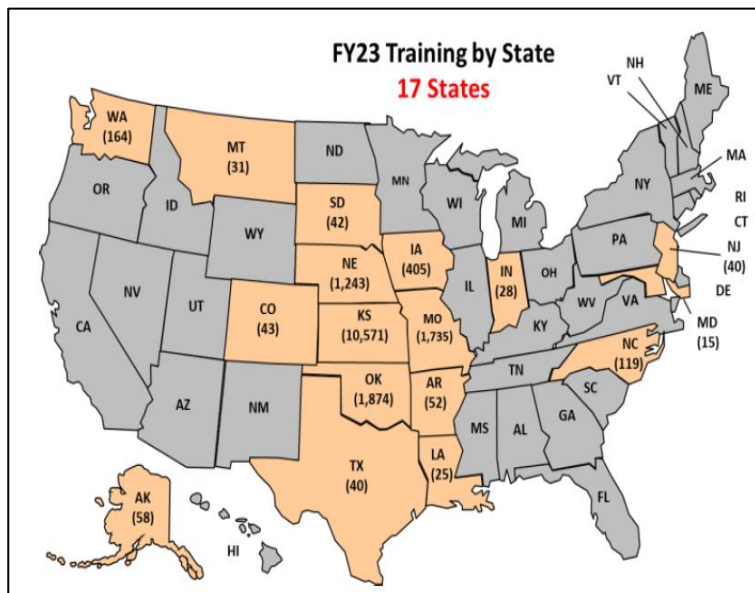
Fort Riley boasts a secondary 200 meter long, floating bridge site (FBS) (at Williams Drain - Training Area 64), which validates FRKS ability to support future Multi-Role Bridge Company (MRBC) stationing actions and conduct FBS operations for 1st Inf. Div. Organic or Total Army Partner Units.

Fort Riley also has a dedicated Expert Infantry Badge (EIB) / Expert Field Medical Badge (EFMB) / Expert Soldier Badge (ESB) site validating our ability to conduct EIB/EFMB/ESB operations at a dedicated location, codifying FRKS as a premier training installation and increasing the mission readiness of 1st Inf. Div. and Total Army Partner Units



Training - Regional and Joint

Fort Riley serves as an Inactive Primary Mobilization Force Generation Installation (MFGI). As an MFGI, Fort Riley is ready and prepared to mobilize reserve component units in support of worldwide contingency operations.



**Note: Does not include Active Component
Brigade Combat Teams stationed on Fort Riley**

The Camp Funston Reserve Component Training Complex consists of:

- 4 billets with total bed space for 1,344
- 1 assembly/feeding area that seats 164
- Battalion administration areas
- 2 motor pools
- 6 relocatable arms rooms



Training data provided by DPTMS.

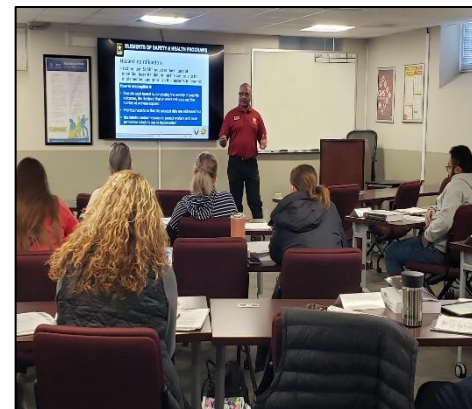
Training - Ranges

Range 1	MRF/Qualification/Night/Field Fire	Training Area 16	BDE Staging Area
Range 1A, Range 3A	Zero Range	TLC-1 & TLC-2	Team Live-Fire Course
Range 2	Combat Pistol Qual Range	MFP-4, MFP-6	Mortar Firing Point
Range 3	MRF/Qualification/Night/Field Fire	MFP-14	Mortar Firing Point
Range 4	Grenadier Gunnery, 12-Lane Zero Range & Privately Owned Weapons/6 Lane; M203 Qual	Combat Trail	EOD- Equip Training
Range 5	Sniper Range- Familiarization	OP-C, OP-E	Observation Point for Mortar or Artillery Fire
Range 6	Zero Range, Sniper Range, Reflex Fire	UC-0, UC-1, UC-2, UC-3, UC-4, UC-5, UC-6	Urban Cluster/Combat in the City
Range 7	Multipurpose Machinegun/Zero Range		
Range 7A	Familiarization Range	Afghan Village	Urban Cluster-Largest Wall Town
Ranges 8,15,17,19,27,51	Inactive	Obstacle Course	Individual Phy. Fitness Confidence Builder
Range 9	Machine Gun Fam/Zero/SRT	Rappel Tower	Rappel Tower
Range 10	ISBC Infantry Squad Battle Course	FLRC	Field Leaders Reaction Course
Range 16	Emergency Ordnance Disposal Training	CACTF	Combined Arms Collective Training Facility
Gunnery South	Scout Recce	Offense/Defense Building	Offense/Defense Building
Range 25	Hand Grenade Qualification and Live-Fire	Mock Airfield	Mock Airfield
Range 29	MK 19 Live-Fire//AT-4/M320/203	MHSC	Mortar Hip Shoot Course
Range 34	Skeet/Trap for DFMWR	KDR	Known Distance Range
Range 52	Demolitions & Breach Trainer	QTR MRF	Qualification Training - Modified Record Fire
QTR MPMG	Qual- Machine Gun/MK 19	QTR Sniper	Qualification Training - Range Sniper
SAC	Squad Assault Course	FLS	Field Landing Strip
Range 54	Engineer Qualification Tables III-VI	QTR CPQC	Qualification Training - Combat Pistol
Douthit Complex - DMPRC & DMPTR	Digital, Multi-purpose Range Complex/ Stationary Gunnery/Aerial Gunnery	HERC NAV DZ	Drop Zone
Douthit Complex-Zero	Zero Complex	Timber Creek DZ	Drop Zone
Douthit Screening Range	Screening Range/ Sync Ramp	Trench Complex	TA-16 Trench Training
Shoot House 1	Live-Fire Shoot House	FBS #1	Floating Bridge Site- Madison Creek
Shoot House 5	Live-Fire Shoot House/ Zero Range	FBS #2	Floating Bridge Site- Williams Drain
Range 53	IPBC Infantry Squad/Platoon Battle Course	Training Area 12 & 24	Land Navigation

Safety - Federal Employee Compensation Act (FECA)

Through the efforts of Soldiers, Department of the Army civilians and other Fort Riley community members, USAG Fort Riley continues to be the installation with the lowest total FECA costs compared to any like installation.

	<u>MEDICAL COST</u>	<u>COMPENSATION COST</u>	<u>TOTAL</u>
2019	\$45,675	\$136,698	\$182,373
2020	\$47,582	\$133,318	\$180,900
2021	\$55,564	\$68,197	\$123,761
2022	\$38,309	\$71,566	\$109,875
2023	\$39,889	\$182,818	\$222,707



Cost-Conscious, Safe and Efficient Installation

- FECA cost is a significant data point for selection of safety achievements
- Fort Riley continues to have the lowest workers' compensation cost in IMCOM Readiness with Fort Riley below the next comparable installation by \$352K.
- As of 2 October 2023, Fort Riley has had no Class A or B accidents in the past 1,630 days.
- Fort Riley Garrison Safety Office was awarded the FY23 SECARMY Exceptional Organization Award of Excellence in Safety



FECA data provided by the Garrison Safety Office.

Housing - On-Post Residential

Fort Riley's family housing is managed by Corvias in conjunction with the Army Housing Office. Corvias is an Army partner and a private company. Fort Riley's leaders and Corvias share common objectives such as, providing a safe, quality home, excellent customer service and reliable/timely maintenance to our Soldiers and their families. In FY23, 52 additional homes were built for Senior Non-Commissioned Officers (SNCO) bringing the total number of homes on Fort Riley to 3,878.



Housing data provided by DPW and Corvias.

Corvias

Family Quarters	3,878
- Officer	441
- Enlisted	3,437
Total Square Footage	6,665,391
Community Centers	5
Neighborhood Pools	4



Basic Allowance for Housing (BAH)

The Basic Allowance for Housing (BAH) is a U.S.-based allowance prescribed by geographic duty location, pay grade and dependency status. It provides uniformed service members (SM) equitable housing compensation based on housing costs in local civilian housing markets within the United States when government quarters are not provided.



Military BAH payroll provided by Army Military Pay Office.

Military Service Grade	Average # of SMs Collecting BAH w/ Dependents (non-barracks SM)	BAH Paid to SMs Collecting BAH w/ Dependents (non-barracks SM)
E1-E4	2,708	\$36,512,835
E5-E6	2,938	\$45,298,995
E7-E9	1,036	\$19,003,668
O1-O2	663	\$9,742,911
O3-O4	813	\$15,936,273
O5-O8	113	\$2,757,537
W1-W2	338	\$6,085,188
W3-W5	124	\$2,437,110
TOTAL	8,733	\$137,774,517

Fort Riley's BAH rate is among the lowest among division-level installations, making it cost effective and fiscally beneficial to the DOD and the Army.

BAH totals include SMs living both off post and in Corvias on-post family housing.

Housing - Army Barracks Management Program

Army Barracks Management Program (ABMP) is part of the Army plan to improve the quality of life for single Soldiers and to standardize the management of barracks Army-wide. Goals of the program include improving barracks utilization, managing vacant barracks space during deployment, reducing maintenance response time, decreasing building damages and extending the life of the facilities.

- 66 buildings with 6,200+ spaces managed at company level
- 9 Soldier community buildings
- Footprints down to company level
- Basic repair & upkeep performed at company level
- Sustainment and modernization phased out to 2030
- Soldier accountability and responsibility
- Completed an innovative first-of-its-kind modified 4+2 barracks design; encourages Soldier interaction to reduce isolation and suicidal ideations
- Fort Riley competed for and received:
 - \$37.8M for 3 barracks in FY19 which came online in FY22
 - \$56.9M in FY20 for 4 barracks which came online FY23
 - \$18.5M in FY21 for 1 barrack to renovate and upgrade, still under construction
 - Received \$40M for additional 4 barracks in FY23



Housing data provided by DPW.

Housing – Temporary Lodging / Hotel

Transitional Soldiers, families and guests of Fort Riley have the option of using the on-post hotel – InterContinental Hotels Group (IHG) Candlewood Suites.

Key Facility Highlights:

Guest Houses	3
Special Needs / Accessible Room Suites	9
Distinguished Visitors (DVQ)/Rooms	9
Total Hotel Rooms	109



Service Excellence:

Service Excellence 2023 Best in Class Heartbeat Winner for Guest Satisfaction.

#1 for Guest Satisfaction out of all IHG Army Hotels in the PAL portfolio.



Community Contribution:

Candlewood Suites Fort Riley, an IHG hotel, hosts a PCS Social each Wednesday night, a collaborative event, open to all, that serves a free meal and brings together agencies from on and off post to assist new and transitioning service members and families with resources and guidance. Participating agencies include Fort Riley Chaplains, banking institutions, family assistance groups and representatives from local community organizations. Additionally, Candlewood Suites IHG has sponsored several MWR events and Army related activities in 2023 such as Fort Riley's Kidsfest; the 3rd Annual Spring CG Scramble Golf Tournament; Resilience Symposium; Volunteer of the Year Ceremony; and 2023 Victory Celebration Rock'n'Roll & Car Meet. We continue to remain positively engaged in our post community in ensuring that Soldiers and/or family members, arriving to or leaving from Fort Riley, have the necessary resources to make a smooth transition.

Innovative Cost Efficiencies

Fort Riley's cost conscious culture is seen in the \$9.2 million in FY23 validated cost savings/avoidance. Fort Riley continues to execute innovative cost savings partnerships, like the 5 active Intergovernmental Support Agreements (IGSAs) and more than 94 agreements with community partners.

	<u>Cost Avoidance</u>	<u>Cost Savings</u>	<u>Revenue Generation</u>	<u>Total</u>
FY19	\$6,516,701	\$603,221	\$120,000	\$7,239,922
FY20	\$6,289,664	\$502,979	\$120,000	\$6,912,643
FY21	\$3,997,906	\$1,305,000	\$187,466	\$5,490,372
FY22	\$4,815,067	\$515,841	\$189,966	\$5,520,874
FY23	\$4,599,016	\$4,466,457	\$189,966	\$9,255,439
Total (over 5 years)	\$26,218,354	\$7,393,498	\$807,398	\$34,419,250

Cost Savings

- **D-B CIRM IGSA with USD 475**
Signed 2 August 2022
Est. annual cost savings: ~\$4.5M
- **Demolition IGSA with (USD) 475**
Signed 27 August 2021
Est. one time cost savings: ~\$194K
- **Safety IGSA with KS Traffic Safety Resource Office (KTSRO)**
Signed 11 September 2019
Est. annual cost savings: ~\$8K / cost avoidance ~\$20K
- **Archeological Site Surveys IGSA with KSU**
Signed 13 May 2019
Est. annual cost savings: ~\$24K
- **Bulk Salt Purchasing IGSA with the City of Manhattan KS**
Signed 21 August 2018
Est. annual cost savings: ~\$89K
- **Hay and Crop Lease Partnership**
Est. annual cost savings: ~\$350K / revenue generation ~\$189K

CPI data provided by PAIO.

CPI reported totals may change from previously reported data based on continual review and documentation of efficiencies being performed on the installation.

On- & Off-Post Partner Organizations

On-Post (Federal or DOD)	On-Post (Non-federal, Non-DOD)	Off-Post
<ul style="list-style-type: none"> • 10th Air Support Operations Squadron (10th ASOS, USAF) • Army Field Support Battalion - Riley (AFSBn-Riley), 407th AFSB • Army Military Pay Office (AMPO) • 84th Explosive Ordnance Battalion (EOD) • Army and Air Force Exchange Service (AAFES) • Army Benefits Center-Civilian (ABC-C) • Civilian Human Resources Agency (CHRA) • Civilian Personnel Advisory Center (CPAC) • Criminal Investigation Division (CID) • Defense Commissary Agency (DeCA) • Defense Logistics Agency (DLA) Disposition Service • Detachment 2, 3rd Combat Weather Squadron (USAF) • Kansas Army National Guard Advanced Turbine Engine Army Maintenance (ATEAM) • Kansas Army National Guard Maneuver and Training Equipment Site (MATES) • KS Small Market, Stand-Alone Military Medical Treatment Facility, Defense Health Agency (DHA) • Dental Activity (DENTAC) • Mission Installation Contracting Command (MICC) – Riley • Midwest Region Network Enterprise Center (RNEC) • Special Operations Recruiting Battalion • U.S. Army Communications-Electronics Command • U.S. Army Corps of Engineers • U.S. Department of Veterans Affairs • Center for Military History (2 Museums) 	<ul style="list-style-type: none"> • Adjutant General's Corp Regimental Association • American Federation of Government Employees (AFGE) Local 2324 • American Red Cross-Service to the Armed Forces • Armed Forces Bank • Barton Community College • Big Red One Chapter of the United States Field Artillery Association • Boy Scouts of America • Girl Scouts of America • Cub Scout Packs 3260 and 3660 • Catholic Women of the Chapel • Combined Scholarship Fund • Corvias (Contractual) • Drunk Driving Prevention Program • Flint Hills Signal Corps Regimental Association • Fort Riley Central Kansas Chapter of the Association of the United States Army (AUSA) • Fort Riley Spouses Club • Fort Riley Military Vehicle Club • Fort Riley Outdoorsman Group (FROG) • Friends of the Fort Riley Museum • Intercontinental Hotels Group (IHG) (Contractual) • Military Community Youth Ministry Club • Military Police Regimental Association • Partners of the First Territorial Capital • Protestant Women of the Chapel • Sergeant Audie Murphy Club • Society of the First Infantry Division (BRO) • U.S. Department of Agriculture • U.S. Department of Veterans Affairs • USO Kansas (United Service Organization) 	<ul style="list-style-type: none"> • Airstream Renewables Inc. (TAP) • Adopt-a-School (16 USDs) • ABF Freight (TAP) • Central Kansas Military Community Foundation • Civil Air Patrol • Elected Officials • Emporia State University • Flint Hills Job Corps • Flint Hills Regional Council • Heroes MAKE America (TAP) • Home Builders Institute (TAP) • Junction City Chamber of Commerce • Junction City Military Affairs Council • Kansas Department of Transportation • Kansas Employment Exploration Program (8 Participating Communities) • Kansas State University • KANSASWORKS (TAP) • Lady Troopers • Little Apple Brigade • Manhattan Chamber of Commerce • Manhattan Military Relations Committee • Manhattan, Junction City, Ogden and Milford Lake Parks & Recreation • McConnell AFB (DoD) • National Bio and Agro-Defense Facility • Old Troopers • Region Reimagined • Regional Airports: Manhattan, KS., Salina, KS , and Topeka, KS • Ryder (TAP) • Total Army – 18 states (TAGs) • Unified School District (USD) 383 • Unified School District (USD) 475 • Union Pacific Railroad • University of Kansas

Fort Riley USAG partners with 122 separate on- & off-post agencies to provide integrated installation and regional services in support of Big Red One Soldiers, families, civilians and retirees, making Fort Riley and the Central Flint Hills Region of Kansas a great place to live, train, deploy from, come home to and retire!!!!

Soldier Transition

- In FY 2023, 2007 Soldiers Transitioned from Fort Riley
- On average 2,200 to 2,400 Soldiers transition from Fort Riley to civilian jobs annually
- 220 (10%) of transitioning Soldiers stayed in Kansas
- Military Occupational Specialties translate to many civilian job skills

Security	Network Engineer	Chaplain	Veterinarians
Engineer	Paralegal	Dental	Railway Crewmembers
Construction	Police	Nurses/Doctors	Truck Drivers
Plumber	Police Dog Handler	Orthopedics	Transportation Management
Firefighter	Financial Management	Pediatrics	Diesel Mechanics
Surveyor	Human Resources	Radiology	Electronics Repairer
Aviation Maintenance	Musician	Cardiovascular	Logistical
Air Traffic Control	Columnists	Respiratory	Recruiters
Electrician	Broadcasting	Nutrition	Water Treatment
Information Technology	Counselors	Pharmacy	Mortuary Affairs

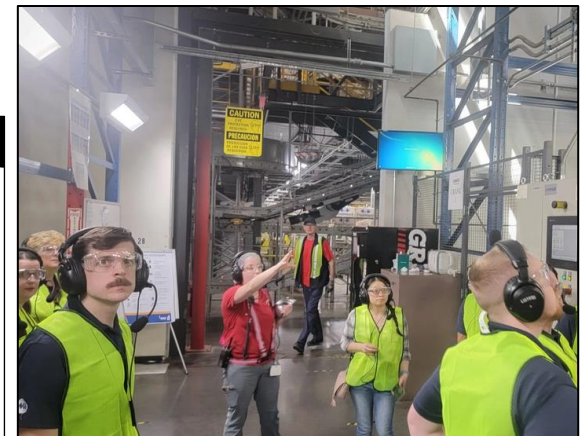
Fort Riley Career Skills Program (CSP)

These programs allow Soldiers to attend apprenticeship or internships, 180 days from separation, with an honorable discharge, good standing with command and command authorization.

Program	Completion
Airstreams Renewables Inc. Tower Technician	605 Graduates
ABF Freight CDL-A	358 Graduates
Heroes MAKE America	416 Graduates
KANSASWORKS*	225 Completed
Home Builders Institute	292 Graduates



* Kansas Based



Transition Opportunities

Kansas Employment Exploration Program (KEEP) for Transitioning Service Members/TAP participants

KEEP is a Fort Riley Transition Assistance Program (TAP) initiative designed to encourage transitioning service members to settle down and remain in Kansas after completing their military service. Attendees receive community tours and are introduced to employers and city leaders to discuss job opportunities, salaries and the quality-of-life options available to them in the community.

Key highlights / mutual benefits include:

- Provides Kansas communities with skilled labor force
- Reduces unemployment among transitioning Soldiers
- Increases community veteran/veteran-retiree populations and associated economic impacts

2023 Participating Communities

KEEP Tours in FY23 included visits to Manhattan, Topeka, Lawrence, and Wichita with additional trips scheduled for FY24

Previous Participating Communities:

- Salina, Kansas
- Manhattan, Kansas
- McPherson, Kansas
- Wichita, Kansas
- Junction City, Kansas
- Topeka, Kansas
- Emporia, Kansas

USO Pathfinder Transition Program

The USO Transition Program extends the USO experience to active-duty, Reserve, National Guard and military spouses by offering professional development services throughout the duration of military service as well as in preparation for life post-military life. USO Transition Program specialists help develop a personalized action plan and help them take full advantage of services and resources that are the best fit. In 2023 the USO Transitions Program team served more than 1,500 transitioning service members, military spouses and their families.

The USO Pathfinder Transition Program works with strategic partners to connect service members and military spouses to resources through a holistic approach, focusing on:

- Employment, Resume Writing, Job Seeking
- Education
- Financial readiness
- Mentorship
- VA Benefits Support



Quality of Life

Army & Air Force Exchange Service (AAFES)

Did you Know? The Fort Riley Exchange does not rely on appropriations from Congress and will remain open even if the federal government shuts down. Most of the organization's operating budget comes from the sale of goods and services. Panda Express is now open. A 3rd Domino's Pizza will open soon.



Food Services	Other
Burger King	Main Post Exchange
Charley's (2)	Annex
Starbucks (2)	Barber Shop (2)
Subway (2)	Expresses (5)
Panda Express	Military Clothing Sales
Q'doba	
Popeye's	
Dunkin' Donuts	
Baskin Robbins	

United Services Organization (USO)

USO Kansas is a dedicated pillar of support serving military members and their families both within Fort Riley and beyond. Committed to fostering a sense of community and connection, USO Kansas provides a variety of weekly programs catering to every member of the military family, from toddlers to spouses and service members. Recognizing the significance of a shared meal in fostering camaraderie, USO Kansas transforms the dining experience into a social hub, creating a welcoming environment where bonds are strengthened over hearty meals daily.



Effort / Activity	FY23 Participation
USO Programs, Events, Outreach	60,199
USO Center Foot Traffic	88,502



Defense Commissary Agency (DeCA)

The Defense Commissary Agency operates a worldwide chain of commissaries, saving authorized patrons thousands of dollars annually on their purchases. A core military family support element, and a valued part of military pay and benefits, commissaries contribute to family readiness, enhance the quality of life for America's military and their families and help recruit and retain the best and brightest men and women to serve their country.

Quality of Life

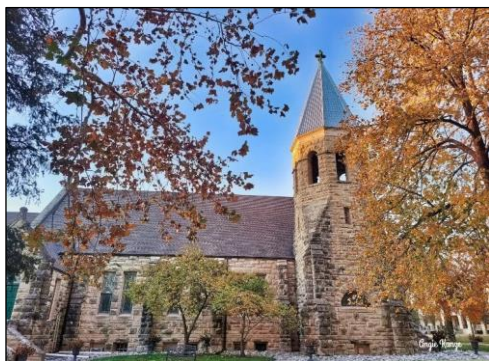
Fort Riley Post Library

In FY23 the Fort Riley Post Library had 50,366 items circulated as well as numerous family activities with more than 5,913 patrons in attendance.

- Audiobooks on CD
- Fiction & Non-Fiction DVDs, includes TV shows
- Video games for multiple platforms
- Free eBook downloads
- Military Reading
- ASVAB, AFAST and GED exams
- Monthly family movie nights
- Monthly theme parties
- Computer Labs



Fort Riley Religious Services



Worship Locations

Victory Chapel
Historic Main Post Chapel
Saint Mary's Chapel
Morris Hill Chapel
Kapaun Chapel
Normandy Chapel
IACH Chapel
Outdoor Chapel



17,432 volunteer hours were recorded to support Fort Riley Chapel ministry for FY23.

The volunteer hours given, equates to approximately \$522K in services supporting Soldier and family readiness and spiritual resiliency for more than 31,750 participants. This combat multiplier significantly strengthens 1st Inf. Div Soldiers and families, improving quality of life and enhancing force projection capabilities.

Quality of Life - DFMWR

The Directorate of Family and Morale, Welfare and Recreation provides recreation programs and services that increase the quality of life for community members and builds readiness and resiliency. DFMWR became nationally accredited in 2015 and re-accredited in 2021. The DFMWR staff's dedication to professionalism compels them to do things right, maintain strong peer relationships, keep up with trends, attract quality applicants for key positions and preserve credibility in the eyes of the community members.



Recreation Services

- Animal Shelter and Adoption Center
- Automotive Skills Center & Car Wash
- Better Opportunities for Single Soldiers (BOSS)
- Equipment Checkout Center
- Fort Riley Skeet & Trap Range
- Hobby Studio
- Leisure Travel Services
- Outdoor Adventure Center
- Riley's Community Center
- Spare Time Interactive Entertainment
- Warrior Adventure Quest
- Warrior Zone



Sports, Fitness & Aquatics

- Craig Fitness Center (open 24/7)
- Custer Hill Aquatic Park
- Eyster Indoor Pool
- Group Fitness and Personal Training
- Intramural Sports Program
- King Field House Fitness Center
- Leonard Fitness Center
- Long Fitness Center & Training Pool
- Robinson Fitness Center
- Whitside Fitness Center (open 24/7)

Quality of life data provided by DFMWR.

For more information on MWR programs and services visit riley.armymwr.com

Quality of Life - CYS

During FY23, Child and Youth Services (CYS) maintained DOD certification and accreditation standards across the CYS programs while maintaining a commitment to provide affordable, available, accountable and quality care. Youth Sports and Fitness increased participation by providing quality of life opportunities for children at Fort Riley. Childcare availability increased due to the re-opening of Warren CDC.



Child and Youth Services

Outreach Services

- Parent Central Services
- School Liaison

Youth Sports and Fitness

- SKIES Unlimited Instructional Program

1st Division Child Development Center

Custer Hill School Age Center

Custer Hill Youth Center

Forsyth Child Development Center

Forsyth East School Age Center

Warren Child Development Center

Warren East Child Development Center

Whitside Child Development Center

Whitside North Hourly Care

Family Child Care

Family Services

Child Care Centers	5
--------------------	---

- Capacity:	720
-------------	-----

Certified Family Child Care Homes	6
-----------------------------------	---

- Capacity:	36
-------------	----

School Age Services	2
---------------------	---

Youth Center	1
--------------	---



Quality of Life - ACS

The mission of Army Community Service (ACS) is to facilitate the commander's ability to provide comprehensive, standardized, coordinated and responsive services that support Soldiers, Army civilians, retirees and their family members regardless of geographical location and to maximize technology and resources, eliminate duplication in service delivery and measure service effectiveness.



Army Community Service (ACS)

- Army Emergency Relief
- Army Family Action Plan
- Army Family Team Building
- Army Volunteer Corps
- Employment Readiness
- Exceptional Family Member Program
- Family Advocacy Program
- Financial Readiness Program
- Information and Referral
- Military and Family Life Counselors
- Mobilization, Deployment and Stability, Support and Operations
- New Parent Support Program
- Relocation Readiness
- Resilience Training
- Survivor Outreach Services
- Victim Advocacy Program

Program Utilization in FY23

Simple Contacts (<15 min.)	146,974
Extended Contacts (>15 min.)	5,598
Classes, briefs and sessions	2,121
Total patrons supported (Soldiers, civilians, retirees and their family members)	154,693



Quality of Life - Community Service

Volunteer Services

Fort Riley Soldiers, family members and civilians contribute a vast amount of volunteer service both on and off the installation. Through coordination with the Army Volunteer Corps office, dedicated individuals provide values-based, high-quality, cost-efficient services that contribute to resiliency and quality of life for people living in the Flint Hills Region.

	<u>Volunteer Hours</u>	<u>Cost Avoidance</u>
2019	66,831	\$1,698,844
2020	35,686	\$970,659
2021	60,487	\$1,811,589
2022	58,399	\$1,749,058
2023	73,521	\$2,274,368
Total (over 5 years)	294,924	\$8,504,518



Army Emergency Relief (AER)

AER is the official non-profit of the U.S. Army and provides grants, interest free loans and scholarships to promote readiness and relieve financial distress of Soldiers, their families, and retirees.

Total assistance provided through Army Emergency Relief to Fort Riley area active service members, dependents, and retirees in FY23 - \$1,276,634



Volunteer data provided by DFMWR – Army Community Service.

FY23 Data Contributors

1st Infantry Division Headquarters	Equipment Concentration Site #33 (ECS)
10th Air Support Operations Squadron (10ASOS)	General Services Agency (GSA)
407th Army Field Support Battalion (AFSBn – Riley)	InterContinental Hotels Group (IHG)
Advanced Turbine Engine Army Maintenance (ATEAM)	Kansas Army National Guard (KSARNG)
American Red Cross	KS Small Market, Stand-Alone Military Medical Treatment Facility, Defense Health Agency (DHA)
Armed Forces Bank	Maneuver and Training Equipment Site (MATES)
Army and Air Force Exchange Service (AAFES)	Mission and Installation Contracting Command (MICC)
Army Military Pay Office (AMPO)	Navy Federal Credit Union
Aviation Field Maintenance Activities	Network Enterprise Center (NEC)
Center for Military History (Fort Riley Museums)	Office of Personnel Management (OPM)
CWTSatoTravel	Plans, Analysis and Integration Office (PAIO)
Civilian Human Resources Agency, SW Region	Public Affairs Office (PAO)
Corvias	Religious Support Office (RSO)
Defense Commissary Agency (DeCA)	Resource Management Office (RMO)
Defense Counterintelligence and Security Agency	Secretary to the General Staff (SGS)
Defense Human Resources Activity - Office of the Actuary	U.S. Army Corps of Engineers
Dental Activity Command (DENTAC)	U.S. Army Foundry Program (742 nd MI BN)
Detachment 2, 3rd Combat Weather Squadron	U.S. Army TMDE Support Center
Directorate of Emergency Services (DES)	Unified School District #475
Directorate of Family, Morale, Welfare, & Recreation (DFMWR)	Unified School Districts within the Central Flints Hills Region
Directorate of Human Resources (DHR)	United Services Organization (USO)
Directorate of Plans, Training, Mobilization, & Security (DPTMS)	United States Postal Service (USPS)
Directorate of Public Works (DPW)	VYVE Broadband
DLA Information Operations Ft Riley	Veterans Affairs (VA)
Envision Xpress BSC	Veterans Health Administration (VHA)

Fort Riley Links:

Public Website: <https://home.army.mil/riley/>

Facebook: www.facebook.com/FortRiley

Twitter: <https://twitter.com/FortRiley>

Instagram: <https://www.instagram.com/fortrileypao/>



U.S. ARMY



“We Are The Army’s Home – Serving the Rugged Professionals of the Big Red One and Fort Riley”



Fort Riley – An Award-Winning Installation:

- SECARMY Energy and Water Management Award (4 consecutive years 2020 thru 2023)
- DA HRC Transition Assistance Program Award for Mid-Size Installations (5 consecutive years 2019 thru 2023)
- Federal Energy Management Program (FEMP) Award (2022)
- Army Community Partnership Award (2022, 2021, 2019)
- SECARMY Exceptional Organization Award of Excellence in Safety (6 of last 8 years)
- U.S. Army Safety Excellence Streamer Award (2022)
- U.S. Army Annual OPSEC Award (2021)
- Chief of Staff of the Army Award of Excellence in Legal Assistance (2022)
- Thirty Kansas Press Association Awards (2020, 2019)
- National Gold Medal Plaque Award for Excellence in Park and Recreation Management (2020)
- IMCOM CYS Team Award of Excellence (2019)

“Fort Riley – A Great Place to Live, Train, Deploy From, Come Home To, and Retire”





Prepared by:

**United States Army Garrison - Fort Riley
Plans, Analysis, and Integration Office
785-240-0586 / DSN 520-0586**