



FY25 ECONOMIC IMPACT SUMMARY

1 OCT 24 – 30 SEPT 25

FORT RILEY KANSAS

DUTY FIRST,
PEOPLE ALWAYS,
ALL ELSE FOLLOWS.



U.S. ARMY



The background image shows the silhouettes of Fort Riley's structures, including a large gun turret, against a vibrant sunset sky with orange and red clouds. Bare tree branches are visible in the foreground and background.

Fort Riley

Fort Riley's history stretches back more than 170 years to the selection of the fort's site in 1852. First established to protect the movement of settlers over the Oregon-California and Santa Fe trails, Fort Riley's mission evolved after the Civil War to protecting the railroad and maintaining peace and stability among settlers and the Plains Indians. For over 30 years, Soldiers, including those of Custer's 7th Cavalry, used Fort Riley as a base to protect westward expansion.

In 1892, the School of Cavalry and Light Artillery was established that later evolved into the Mounted Service School in 1907 and the Cavalry School following World War I. Since that time, Fort Riley has served as a training center preparing Soldiers for all of America's major wars of the 20th century.

The Big Red One's history begins in 1917 when General John "Blackjack" Pershing arrived in France with the First American Expeditionary Force. The "Fighting First" led the way for American troops in World War I. The division has a proud and honorable history that reflects the heirs of the American Soldier. Having fought in five wars, the 1st Infantry Division is one of the most decorated divisions in the U.S. Army.

For 68 years, the 1st Infantry Division has called Fort Riley home. Our central location and access to transportation allows us to quickly deploy forces around the world. Fort Riley proudly serves as the oldest continually serving FORSCOM installation, with the oldest and most storied division, the Big Red One. Fort Riley Soldiers and Civilians are Brave, Responsible, and On Point for the nation.

Table Of Contents

Overview – Who We Are	2
Command Group	3
Unit Information	4
Big Red One Year of the Warrior.....	6
Fort Riley Economic Impact	7
Economic Impact.....	8
Payroll	9
Service and Supply	10
Construction	11
Intergovernmental Support Agreements (IGSAs).....	12
Veteran Expenditures.....	13
Education	14
Health Care	15
Population	16
Infrastructure	20
Deployment	21
Training	23
Safety	27
Housing	28
Innovative Cost Efficiencies.....	32
Partner Organizations.....	33
Soldier Transition.....	34
Quality of Life	36
FY25 Data Contributors.....	42

Overview – Who We Are



U.S. ARMY

Department of the Army

The U.S. Army's mission is to deploy, fight and win our Nation's wars by providing ready, prompt and sustained land dominance by Army forces across the full spectrum of conflict as part of the joint force.

1st Infantry Division and Fort Riley



The 1st Infantry Division builds combat ready and resilient formations at echelon, prepared to rapidly deploy and destroy enemy forces on a complex, evolving, and lethal battlefield, leaving **nothing at rest** in our pursuit of excellence.

Army Materiel Command



AMC delivers precision sustainment and materiel readiness to an expeditionary global force from Joint Strategic Support Area to the tactical point of contact across the spectrum of conflict in support of the Joint Force.



Installation Management Command

IMCOM integrates and delivers installation support in order to enable Quality of Life for People and Readiness of the Army.



“Fort Riley - A Great Place to Live, Train, Deploy From, Come Home to and Retire”

Command Group

1st Infantry Division Command Group

Commanding General
Command Sergeant Major
Deputy Commanding General - (Support)
Deputy Commanding Officer - (Maneuver)
Chief of Staff

Major General Monté L. Rone
Command Sergeant Major Derek Noyes
Brigadier General Matthew J. Hardman
Colonel Jabari M. Miller
Colonel Travis M. Habhab

Garrison Command Group

Garrison Commander
Garrison Command Sergeant Major
Deputy Garrison Commander

Colonel Gerald A. Nunziato
Command Sergeant Major John T. Adkerson (AK)
Mr. John D. Lawrence

Major Subordinate and Tenant Commanders

1st Armored Brigade Combat Team (ABCT)
2nd Armored Brigade Combat Team (ABCT)
1st Infantry Division Sustainment Brigade
1st Infantry Division Artillery (DIVARTY)
1st Combat Aviation Brigade (CAB)
Irwin Army Community Hospital (IACH)
Dental Activity (DENTAC)
Army Field Support Battalion - Riley, 407th (AFSB)
Division HQ and HQ Battalion
10th Air Support Operations Squadron (ASOS)
97th Military Police Battalion
MICC Fort Riley – 923rd Contracting Battalion

Colonel Matthew R. Kelley
Colonel Landgrave T. Smith
Colonel Charles L. Montgomery
Colonel Patrick H. Kaine
Colonel Eric Megerdoomian
Colonel Laudino M. Castillo Rojas
Lieutenant Colonel Aaron H. Amano
Lieutenant Colonel Malcolm J. Wilson
Lieutenant Colonel K. Tyler King
Lieutenant Colonel Adeyemi Fakunle
Lieutenant Colonel Tommy E. Sieker
Lieutenant Colonel Kwame O. Agyemang

Unit Information – 1st Infantry Division



Division Headquarters and Headquarters Battalion, 1st Infantry Division

The Division Headquarters and Headquarters Battalion (DHQB) consists of four companies whose mission is to support the 1st Infantry Division.



1st Armored Brigade Combat Team, 1st Infantry Division

The 1st Armored Brigade Combat Team (ABCT) consists of: 1st Battalion, 16th Infantry Regiment; 2nd Battalion, 34th Armor Regiment; 3rd Battalion, 66th Armor Regiment; 1st Squadron, 4th Cavalry Regiment; 1st Battalion, 5th Field Artillery; 1st Brigade Engineer Battalion; and 101st Brigade Support Battalion.



2nd Armored Brigade Combat Team, 1st Infantry Division

The 2nd Armored Brigade Combat Team (ABCT) consists of: 1st Battalion, 18th Infantry Regiment; 1st Battalion, 63rd Armor Regiment; 2nd Battalion, 70th Armor Regiment; 5th Squadron, 4th Cavalry Regiment; 1st Battalion, 7th Field Artillery Regiment; 82nd Brigade Engineer Battalion; and 299th Brigade Support Battalion.



Division Artillery, 1st Infantry Division

Division Artillery (DIVARTY) provides a single proponent within 1st Inf. Div. for standardized fires certification and leader development while exemplifying effective Mission Command (Art 5.0); and supporting the seamless cross-attachment of units with common procedures and a shared understanding of the Fire's warfighting capabilities.



1st Sustainment Brigade, 1st Infantry Division

The 1st Sustainment Brigade consists of: HHC, 1st Sustainment Brigade; Special Troops Battalion, 1st Sustainment Brigade; and 541st Combat Sustainment Support Battalion.



Combat Aviation Brigade, 1st Infantry Division

The Combat Aviation Brigade (CAB) consists of HHC, CAB; 1st Attack Reconnaissance Battalion, 1st Aviation Regiment; 2nd General Support Aviation Battalion, 1st Aviation Regiment; 3rd Assault Helicopter Battalion, 1st Aviation Regiment; 601st Aviation Support Battalion; and 1st Heavy Attack Reconnaissance Squadron, 6th Cavalry Regiment.

Unit Information



United States Army Garrison Command (USAG)

USAG consists of the HQ and HQ Company; Emergency Services; Family, Morale, Welfare and Recreation; Human Resources; Plans, Training, Mobilization and Security; Public Works; Equal Employment Opportunity; Garrison Safety; Plans, Analysis and Integration; Public Affairs; Resource Management; and Staff Judge Advocate.



10th Air Support Operations Squadron (10 ASOS), USAF

The 10th Air Support Operations Squadron organizes, trains and equips combat ready Airmen to provide Liaison, TACP command and control, and precision strike to the First Infantry Division and the Joint Force.



Army Field Support Battalion - Riley (AFSBn-Riley), 407th AFSB

The AFSBn-Riley synchronizes, integrates and delivers Readiness and Enterprise Sustainment to the 1st Infantry Division, Fort Riley Kansas, the Garrison, and all tenant units within its area of operations.



Army Military Pay Office (AMPO)

AMPO delivers and administers superior financial services in an efficient, effective and timely manner for Fort Riley Soldiers and their families while setting the standards in customer service as leaders throughout all of the Defense Finance Accounting System.



Civilian Human Resources Agency (CHRA) Fort Riley

CHRA Fort Riley consists of the Consolidated Services Division; Army Benefits Center-Civilian, Civilian Processing Center and Overseas Entitlements; personnel from CHRA HQ G4, G6, G7 and several Command supported Civilian Human Resource Service Centers. CHRA provides Civilian personnel services from onboarding to post separation.



KS Small Market, Stand-Alone Military Medical Treatment Facility, Defense Health Agency (DHA)

Irwin Army Community Hospital (IACH) provides quality healthcare to the Soldiers, families and retirees of the Central Flint Hills Region. The hospital operates Farrelly, Custer Hill and Aviation Health Clinics on Fort Riley.



Midwest Region Network Enterprise Center (RNEC)

The RNEC mission is to build and sustain, a community of Command, Control, Communications, Computers and Information Management (C4IM) service providers in the Midwest Region who are dedicated, innovative and adaptive, with positive customer relationships.



Mission and Installation Contracting Command (MICC)

MICC-Fort Riley and the 923rd Contracting Battalion contracting activities provide 1st Infantry Division and the Fort Riley Garrison contracting solutions and expert acquisition business advice. On order, provides Operational Contracting Support to enable Army Unified Land Operations.

Big Red One Year of the Warrior



The Big Red One Year of the Warrior was the **1st** Infantry Division and Fort Riley's program to recognize and honor the Soldiers of the **1st** Infantry Division, their relentless pursuit of excellence, and their commitment to warfighting mastery. The Big Red One has always led from the front—on the battlefield, in training, and in developing the next generation of warriors. First to the Fight! Milestones for the Year of the Warrior included the 81st D-Day Anniversary Ceremony, the **1st** Division Monument commemoration in Washington, D.C. and a guest speaker/leader professional development series. The Division also focused on and participated in the Army's 250th Birthday parade and competed in various Army-wide competitions.

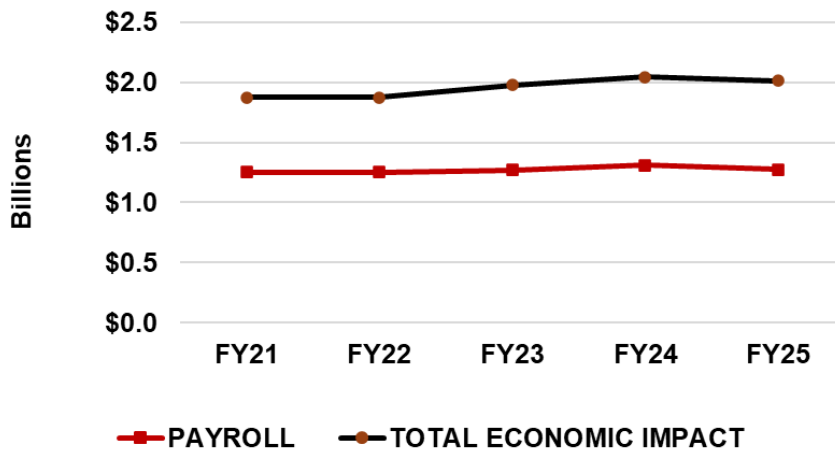


YEAR OF THE WARRIOR

We are fit, well led, disciplined, trained, and COMBAT READY!

Fort Riley Economic Impact

Fort Riley's direct* fiscal year (FY) 2025 economic impact was \$2B



* Direct = No economic multipliers applied.

Changes and increases in economic impact totals from previous Fort Riley economic reports are a result of modifications and improvements in data collection sources.

Payroll	FY 21	\$1,233,834,108
Contracts: Supply and Service		\$186,388,809
Construction		\$70,306,292
VA Expenditures		\$249,732,355
Education		\$30,488,983
Health Care		\$91,498,377
TOTAL ECONOMIC IMPACT		\$1,862,248,924
Payroll	FY 22	\$1,253,407,932
Contracts: Supply and Service		\$189,043,001
Construction		\$73,153,408
VA Expenditures		\$261,320,046
Education		\$15,022,074
Health Care		\$85,019,804
TOTAL ECONOMIC IMPACT		\$1,876,966,265
Payroll	FY 23	\$1,270,517,791
Contracts: Supply and Service		\$212,139,652
Construction		\$35,359,599
IGSAs		\$41,258,977
VA Expenditures		\$304,274,663
Education		\$27,202,741
Health Care		\$89,861,376
TOTAL ECONOMIC IMPACT		\$1,980,614,799
Payroll	FY 24	\$1,312,233,352
Contracts: Supply and Service		\$209,853,157
Construction		\$31,430,337
IGSAs		\$48,921,628
VA Expenditures		\$341,099,761
Education		\$24,053,311
Health Care		\$79,567,542
TOTAL ECONOMIC IMPACT		\$2,047,159,088
Payroll	FY 25	\$1,273,639,806
Contracts: Supply and Service		\$148,778,402
Construction		\$55,177,123
IGSAs		\$37,092,558
VA Expenditures		\$385,941,677
Education		\$16,616,828
Health Care		\$94,731,352
TOTAL ECONOMIC IMPACT		\$2,011,977,746

Economic Impact

Fort Riley utilizes innovative solutions and creative best practices to mitigate funding/manning shortfalls, ensuring a high state of readiness in the Strategic Support Area of the 1st Infantry Division (FORT RILEY).

Payroll	\$1,273,639,806
Contracts - Service and Supply	\$148,778,402
Construction	\$55,177,123
Intergovernmental Support Agreements (IGSAs)	\$37,092,558
Veteran Expenditures	\$385,941,677
Education: Federal Impact Aid	\$16,616,828
Health Care	\$94,731,352

Total Direct Economic Impact	\$2,011,977,746
-------------------------------------	------------------------

With an accepted Congressional Budget Office (CBO) economic multiplier of \$2.2 per \$1 of direct expenditures, Fort Riley's full economic impact would be more than:	\$4,426,351,041
-----------------------------------------------------------------------------------------------------------------------------------------------------------------------	------------------------

Economic Impact – Payroll

Fort Riley is among the largest employers in the Central Flint Hills Region. Additional government agencies and Kansas State University are also major employers in the region.

Military Base Pay*	\$880,364,172
Federal Civil Service Civilian Pay	\$220,055,777
Non-Appropriated Fund Civilian Pay**	\$15,344,275
Non-Federal Civilian Pay**	\$27,783,259
Retiree Annuities (Defense Manpower Data Center)***	\$130,092,323

Total Payroll

\$1,273,639,806



* Military payroll provided by Army Military Pay Office; Federal civil service civilian pay information provided by RMO and G8.

** Non-appropriated fund civilian pay provided by DFMWR; Non-federal civilian pay information compiled by PAIO.

***Utilizing most recent retiree data (FY23) due to DMDC contract changes and 2025 lapse of appropriations. FY25 data will be updated in future documents when available.

Economic Impact - Service and Supplies

Contracts: Service and Supply

Mission & Installation Contracting Command (MICC)	\$9,549,614
Non-MICC Appropriated Funds (APF)	
- Supplies	\$69,591,495
- Services	<u>\$62,898,353</u>
Total Appropriated Funds	\$132,489,848
Non-MICC Non-Appropriated Funds (NAF)	
- Supplies	\$903,230
- Services	<u>\$390,169</u>
Total Non-Appropriated Funds	\$1,293,399
Additional Service and Supply	\$5,445,541

Total Contracts/Supplies/Services	\$148,778,402
------------------------------------------	----------------------



Economic Impact – Construction

Appropriated Funds (AF):

Army Corps of Engineers Military Construction, payments made **\$53,543,400**

- Army Corps of Engineers contracts awarded \$200,894,390

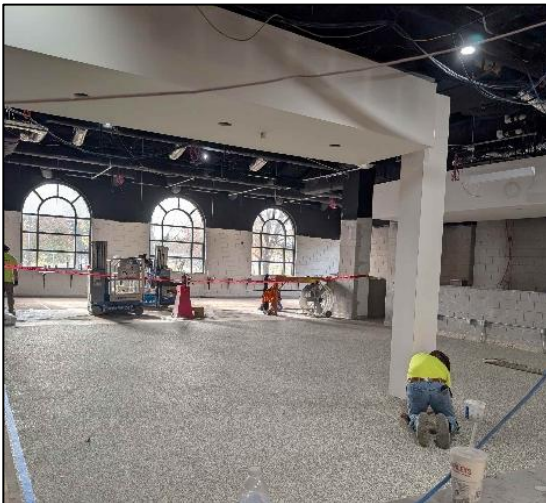
- Army Corps of Engineers contracts completed \$33,703,123

Non-Army Corps of Engineers contracts **\$1,179,877**

Non-Appropriated Funds (NAF):

NAF capital purchase & minor construction **\$453,846**

Total Current Year Payments \$55,177,123



AF contract data provided by the U.S. Army Corps of Engineers; NAF contract data provided by DFMWR; Non-Army COE contract data provided by MICC.

Economic Impact – Intergovernmental Support Agreements (IGSAs)

IGSAs strengthen ties between Fort Riley and the community, the State of Kansas and stakeholders to form mutually beneficial partnerships, improve mission readiness and reduce costs.

IGSA

- Bulk Salt Purchasing Agreement with Manhattan **\$129,579**
- Design – Build Capital Improvement, Repair and Maintenance (D-B CIRM) with USD 475 **\$36,962,979**

Total Current Year Payments \$37,092,558

Community Partnership IGSA Expansions and Renewals



Demolition IGSA with Unified School District 475 Signed 27AUG21
➡ Expanded into a Design-Build, Capital Improvement, Repair & Maintenance (D-B CIRM) IGSA 30AUG22 for 10 Years



Archaeological Site Work IGSA with KSU Signed 13MAY19
➡ Expanded into an Intellectual Capital IGSA 25JUL24 for 10 Years



Salt Bulk Purchasing with City of Manhattan (IGSA)
Signed 21AUG18
➡ Renewed 14AUG23 for 10 Years



Safety IGSA with KS Traffic Safety Resource Office
Signed 11SEP19
➡ Renewed 28FEB25 for 10 Years

Economic Impact - Veteran Expenditures*

Veteran Expenditures are published annually by the National Center for Veterans Analysis and Statistics to provide a comprehensive breakdown of spending across major benefit and healthcare programs by state, county, and Congressional District.

Benefits to Individuals are financial benefits delivered directly to Veterans and their dependents. Compensation and Pension includes disability and pension payments based on service-related conditions or financial need, and expenditures for benefits to spouses and dependents of deceased Veterans.

Other categories listed are expenditures incurred on behalf of Veterans and includes spending that supports the infrastructure, institutional care, and community level services enabling the delivery of benefits and care.



<u>County</u>	<u>Compensation & Pension</u>	<u>Education & Vocational Rehabilitation/ Employment</u>	<u>Loan Guarantee</u>	<u>Insurance</u>	<u>Medical Expenditures</u>	<u>Memorial Benefits</u>	<u>Total Expenditures</u>
Clay	\$9,225,161	\$471,743	\$1,097	\$20,009	\$4,987,851	\$11,000	\$14,716,861
Dickinson	\$22,992,237	\$1,164,656	\$4,048	\$17,756	\$13,549,882	\$87,320	\$37,815,899
Geary	\$85,492,188	\$12,429,687	\$24,077	\$89,507	\$39,942,003	\$111,620	\$138,089,082
Morris	\$4,426,162	\$281,516	\$472	\$0	\$4,479,124	\$44,204	\$9,231,478
Pottawatomie	\$12,917,846	\$771,150	\$996	\$56,918	\$12,564,516	\$72,053	\$26,383,479
Riley	\$64,545,485	\$10,989,488	\$18,184	\$97,030	\$28,393,683	\$160,746	\$104,204,616
Saline	\$21,764,886	\$1,803,263	\$4,369	\$395,890	\$22,948,194	\$228,886	\$47,145,488
Wabaunsee	\$4,440,235	\$224,651	\$323	\$67,487	\$3,602,578	\$19,500	\$8,354,774
Total	\$225,804,200	\$28,136,154	\$53,566	\$744,597	\$130,467,831	\$735,329	\$385,941,677

Regional veteran expenditure data provided by the Department of Veterans Affairs;
Geographic Distribution of VA Expenditures for Fiscal Year 2024, the National Center for
Veterans Analysis and Statistics, Department of Veterans Affairs

* Figures are as of May 2025. FY25 data will be available in 2026.

Economic Impact – Education

Dependents of Soldiers and federal employees account for 5,599 students or 19% of the total student population in the Central Flint Hills Region.



Payments from Federal Impact Aid

USD 475 (Geary County)	4,289 Students	\$16,255,222
USD 383 (Manhattan-Ogden)	773 Students	\$180,359
Other Districts	537 Students	\$181,247

Total Payments from Federal Impact Aid	\$16,616,828
-----------------------------------------------	---------------------

Federal Impact Aid data provided by
DFMWR CYS School Liaison Officer.

Economic Impact – Health Care

Irwin Army Community Hospital (IACH) is a 47-bed hospital designed with the latest medical engineering technology to deliver the best care to our Big Red One Soldiers and mission partners, their families and our retirees.

IACH serves over 40,940 beneficiaries every year. On a typical day, it sees 1,629 clinical patients, 64 ER visits, fills 777 prescriptions, runs 1,131 laboratory procedures, performs 215 radiological exams, 108 vaccinations, performs 6 surgical cases, and delivers 2 babies.



Outsourced (off-post) Patient Care

	<u>Number of Patients</u>	<u>Amount Paid</u>
Total outpatient care	44,585	\$48,353,396
Total inpatient care	1,251	\$15,927,740
Total outsourced patient care	45,836	\$ 64,281,136

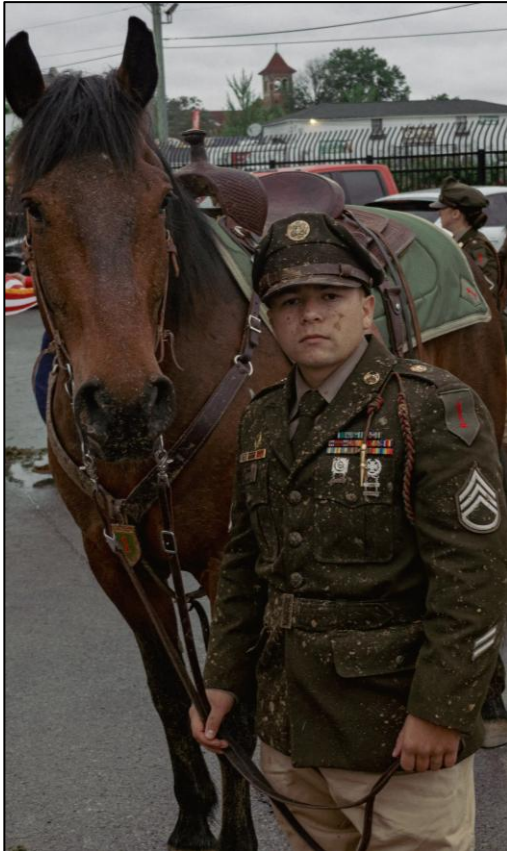
Health Care

Hospital expenses (minus construction, payroll, contracts)	\$30,450,216
Outsourced patient care (see above)	\$64,281,136
Total health care expenses	\$94,731,352

Health care data provided by DHA, RM Division and includes Dental Activities.

Population

Population data reflects the surrounding Flint Hills Region including Clay, Dickinson, Geary, Morris, Pottawatomie, Riley, Saline and Wabaunsee Counties.



Military* (Army)	14,000
Officers	1,500
Warrant Officers	500
Enlisted	12,000
Military (Air Force)	100
Family Members	15,482
On Post	9,145
Off Post	6,337
Veterans**	24,393
Retirees***	4,757
Civilian Employees (including Contractors)	4,475
Total Population	58,450

* Estimated troop strength based on annual fluctuations.
Military population data provided by G-1 Strength Management;
family member population data provided by DHA – DEERS.

** Veteran/retiree data provided by the Department of Veterans Affairs.
***Utilizing most recent retiree data (FY23) due to DMDC contract changes and 2025 lapse of appropriations. FY25 data will be updated in future documents when available.

Population - Civilian Workforce

Department of the Army Appropriated Fund Employees	1,420
Non-Appropriated Fund Employees	455
Other Federal Employees	1,015
Other Civilian Employees (including Contractors)*	1,585
Total Civilian Employees	4,475

Definitions

Department of the Army Appropriated Fund Employees: Civilian employees whose positions and salaries are funded directly by Congress through federal taxes, supporting core Army missions.

Non-Appropriated Fund Employees: Employees paid by self-generated revenue, offering traditional federal civil service benefits, portability, and various career paths such as Morale, Welfare, and Recreation.

Other Federal Employees: Non-Department of the Army Civilian employees from agencies providing support to Fort Riley and the Army mission, such as the Defense Health Agency, Veteran Affairs, and the Defense Logistics Agency.

Other Civilian Employees (including Contractors): Non-Federal employees and contractors from various agencies providing support to Fort Riley and the Army mission, such as on-post USD 475 staff, Corvias Housing Employees, and Range Support Contractors.

* Contractor numbers do not include service contractors who work less than full time or whose physical office location is other than Fort Riley, such as landscaping, maintenance, custodial, etc.

Population – Military Retirees*



Military retirement population numbers include members of the Army, Navy, Marine Corps, Air Force and Coast Guard.

Expenditures include non-disability retired pay, disability retired pay, retired pay for reserve service, survivor annuity programs and special compensation programs for certain disabled retirees.



	<u>Population</u>	<u>Expenditures</u>
Clay County	218	\$5,543,259
Dickinson County	511	\$12,943,712
Geary County	1,792	\$44,405,205
Morris County	94	\$2,378,184
Pottawatomie County	263	\$7,890,250
Riley County	1,378	\$44,355,891
Saline County	374	\$9,437,622
Wabaunsee County	127	\$3,138,200
Total	4,757	\$130,092,323

Regional retiree population data provided by Defense Manpower Data Center.

*Utilizing most recent retiree data (FY23) due to DMDC contract changes and 2025 lapse of appropriations. FY25 data will be updated in future documents when available.

Population - Veterans

Population data includes non-retired veterans registered with and eligible for benefits from the Department of Veterans Affairs. VA expenditures include compensation and pension; education, vocational rehabilitation and employment; insurance and medical expenditures.

	<u>Population</u>	<u>Expenditures*</u>
Clay County	814	\$14,716,861
Dickinson County	2,049	\$37,815,899
Geary County	7,830	\$138,089,082
Morris County	503	\$9,231,478
Pottawatomie County	2,017	\$26,383,479
Riley County	7,331	\$104,204,616
Saline County	3,397	\$47,145,488
Wabaunsee County	452	\$8,354,774
Total	24,393	\$385,941,677

Regional veteran expenditure data provided by the Department of Veterans Affairs; Geographic Distribution of VA Expenditures for Fiscal Year 2024, the National Center for Veterans Analysis and Statistics, Department of Veterans Affairs.

* See page 13 for additional veteran expenditure data.

Veteran population data provided by the Department of Veterans Affairs, utilizing the Veteran Population Projection Model 2023 (VetPop2023)



Infrastructure

Fort Riley has access to 34,000 additional training acres (prairie land) at the Great Plains Joint Training Center in Salina, Kansas, 60 miles away. This area is the largest inert bombing range east of the Rockies and provides exceptional joint training opportunities for heavy forces' collective, distributed, Joint Inter-organizational and Multinational (JIM), 10th Air Support Operations Squadron and Joint Fires, training in coordination with our Kansas National Guard partners.

	<u>Acreage</u>	<u>% Total Acreage</u>
Training Area	69,422	76%
Impact Area	13,390	15%
Maneuver Lane (Fixed Gunnery Ranges)	6,365	7%
Major Water Bodies (Floating Bridge Site)	262	<1%
Military Ranges	2,185	2%
Total Acreage for Training	91,624	100%



Total Installation Acreage = 101,732.91

Buildings excluding Housing

- Number of Buildings	910
- Historical Buildings:	156
- Square Footage w/o housing	12,225,228

Transportation Network (Miles)

- Paved (Cantonment Area)	147
- Unpaved/Dirt (Training Area)	16
- Tank Trails	161
- Range Roads	100
- Railroad Tracks	17

Total Miles 441



Infrastructure information provided by DPW and DPTMS.

Deployment – Rail Yard

When driving past the rail tracks in Camp Funston, it's not uncommon to see a red locomotive pulling cars along the tracks for several hours a day and multiple weeks at a time. Army Field Support Battalion (AFSBn)-Riley Unit Movement and Railhead staff operate as a twelve-man team to ensure the equipment brigades use and need is available to make it safely to their training installation or port destination for each deployment.

Rail yard features include:

- Multiple loading spurs with double, single and side loading capability.
- Rail car storage
- Spur interchange yard.
- Multiple engines to move rail cars between loading docks and interchange yard.
- Command and Control Container and Control Tower available to deploying units.
- Stadium lights provide 24-hour operations, if necessary.
- Reinforced docks with shock absorbers
- Weighing facilities
- Concrete docks for loading equipment that will be shipped by truck on Custer Hill and Camp Funston.
- Portable docks for loading equipment that will be shipped by truck at Camp Funston.



Deployment – Airfields

Fort Riley's robust deployment capability is supported by 3 local airfields available for simultaneous use.

Manhattan Regional Airport features a 460,000 sq. ft. Army Deployment Ramp which allows Fort Riley to use the facility as a Rapid Deployment Facility for a Quick Reaction Force (QRF) mission in support of Homeland Defense. The apron area has been designed to allow two C-17 aircraft to park simultaneously.

- Primary commercial service airport – more than 80,000 enplanements per year with daily dual class jet service provided by American Airlines to Dallas Fort Worth (DFW) and Chicago O'Hare (ORD).
- Two runways – The primary runway is 7,400' x 150' and the crosswind is 5,000' x 75'. Instrument approaches into the primary runway afford flying in inclement weather as well as for training. Class D airspace is controlled by an on-site air traffic control tower.

Salina Regional Airport serves as a forward operating location for military aviation units deploying to Saline County and the Great Plains Joint Training Center operated by the Kansas National Guard.

- Primary runway is 12,300 feet long
- Crosswind runway is 6,500 feet long
- 2.7 million sq. ft. of ramp space
- Excess of 10,000 sq. ft. of hangar space
- Primary runway, taxiway and aircraft parking apron can support all USAF transport aircraft in the AMC fleet

Topeka Regional Airport (Forbes Field) has two runways and more than 2 million square feet of apron space available for transient military, general aviation and commercial aircraft.

- Primary runway is in excess of 12,800 feet long
- Crosswind runway is 7,000 feet long



Training

Fort Riley boasts a recently upgraded Douthitt Gunnery Complex with state-of-the-art operating system hardware, software, cameras, instrumentation sets and communication systems. 43 Integrated Player Units (IPU) sets allow simultaneous gunnery for a Company Team. Hardware is interchangeable between ranges to significantly increase unit throughput allowing M1 Abrams, M2 Bradley and AH64 crews to train more efficiently.

Total Army Training Partners*

1-113 IN (IA ARNG)	KSU ROTC
1-161 FA Bn (KS ARNG)	1-133 IN (IA ARNG)
2-130 FA Bn (KS ARNG)	1-113 CAV (IA ARNG)
891 EN Bn (KS ARNG)	1-168 IN (IA ARNG)
45 IBCT (OK ARNG)	1-134 CAV (NE ARNG)
5 th EN (AD FLWMO)	1-635 AR (KS ARNG)

*List does not include all units that train on Fort Riley

Major Systems Training on Fort Riley



M1A2 Abrams



M2A3 Bradley



AH-64D Apache



CH-47 Chinook



M109 Paladin



M113 APC



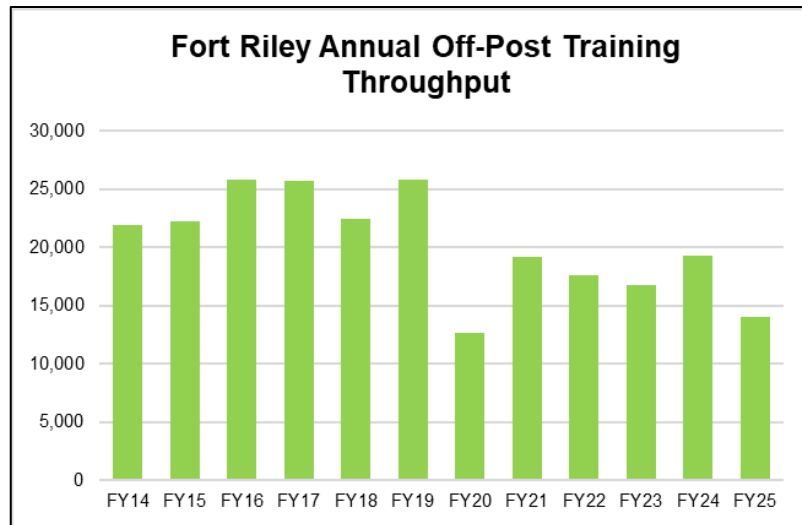
UH-60 Blackhawk



MQ-1 Gray Eagle

Training - Regional and Joint

Fort Riley's training environment consists of a complete, modern, state-of-the-art, full spectrum training capability (live, virtual, constructive, gaming in the Integrated Training Environment) which supports "Total Army," Joint, Inter-organization and Multinational (JIM) training for the Midwest and our state, regional and local partners. In addition to the First Infantry Division, Fort Riley supports training for 15-20K "Total Army" Reserve and National Guard Soldiers annually.



Fort Riley boasts a secondary 200 meter long, floating bridge site (FBS) (at Williams Drain - Training Area 64), which validates FRKS ability to support future Multi-Role Bridge Company (MRBC) stationing actions and conduct FBS operations for 1st Inf. Div. Organic or Total Army Partner Units.

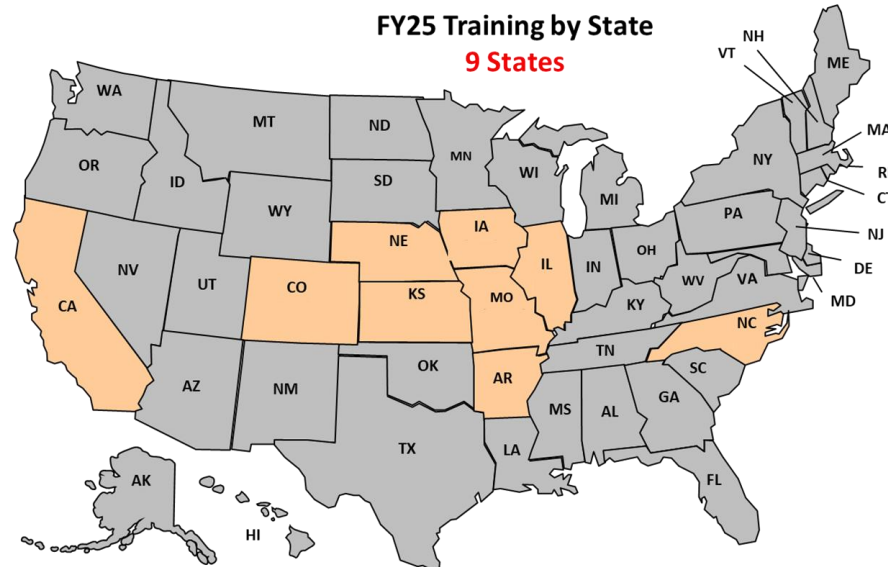
Fort Riley also has a dedicated Expert Infantry Badge (EIB) / Expert Field Medical Badge (EFMB) / Expert Soldier Badge (ESB) site, validating our ability to conduct EIB/EFMB/ESB operations at a dedicated location, codifying FRKS as a premier training installation and increasing the mission readiness of 1st Inf. Div. and Total Army Partner Units



Training data provided by DPTMS.

Training - Regional and Joint

Fort Riley serves as an Inactive Primary Mobilization Force Generation Installation (MFGI). As an MFGI, Fort Riley is prepared to mobilize reserve component units in support of worldwide contingency operations.



**Note: Does not include Active Component
Brigade Combat Teams stationed on Fort Riley**

The Camp Funston Reserve Component Training Complex consists of:

- Barracks buildings
- Assembly/feeding area
- Battalion administration areas
- Motor pools
- Relocatable arms rooms



Training data provided by DPTMS.

Training - Ranges

Range 1	MRF/Qualification/Night/Field Fire	Training Area 16	BDE Staging Area
Range 1A, Range 3A	Zero Range	TLC-1 & TLC-2	Team Live-Fire Course
Range 2	Combat Pistol Qual Range	MFP-4, MFP-6	Mortar Firing Point
Range 3	MRF/Qualification/Night/Field Fire	MFP-14	Mortar Firing Point
Range 4	Grenadier Gunnery, 12-Lane Zero Range & Privately Owned Weapons/6 Lane; M203 Qual	Combat Trail	EOD- Equip Training
Range 5	Sniper Range- Familiarization	OP-C, OP-E	Observation Point for Mortar or Artillery Fire
Range 6	Zero Range, Sniper Range, Reflex Fire	UC-0, UC-1, UC-2, UC-3, UC-4, UC-5, UC-6	Urban Cluster/Combat in the City
Range 7	Multipurpose Machinegun/Zero Range		
Range 7A	Familiarization Range	Afghan Village	Urban Cluster-Largest Wall Town
Ranges 8,15,17,19,27,51	Inactive	Obstacle Course	Individual Phy. Fitness Confidence Builder
Range 9	Machine Gun Fam/Zero/SRT	Rappel Tower	Rappel Tower
Range 10	ISBC Infantry Squad Battle Course	FLRC	Field Leaders Reaction Course
Range 16	Emergency Ordnance Disposal Training	CACTF	Combined Arms Collective Training Facility
Gunnery South	Scout Recce	Offense/Defense Building	Offense/Defense Building
Range 25	Hand Grenade Qualification and Live-Fire	Mock Airfield	Mock Airfield
Range 29	MK 19 Live-Fire//AT-4/M320/203	MHSC	Mortar Hip Shoot Course
Range 34	Skeet/Trap for DFMWR	KDR	Known Distance Range
Range 52	Demolitions & Breach Trainer	QTR MRF	Qualification Training - Modified Record Fire
QTR MPMG	Qual- Machine Gun/MK 19	QTR Sniper	Qualification Training - Range Sniper
SAC	Squad Assault Course	FLS	Field Landing Strip
Range 54	Engineer Qualification Tables III-VI	QTR CPQC	Qualification Training - Combat Pistol
Douthit Complex - DMPRC & DMPTR	Digital, Multi-purpose Range Complex/ Stationary Gunnery/Aerial Gunnery	HERC NAV DZ	Drop Zone
Douthit Complex-Zero	Zero Complex	Timber Creek DZ	Drop Zone
Douthit Screening Range	Screening Range/ Sync Ramp	Trench Complex	TA-16 Trench Training
Shoot House 1	Live-Fire Shoot House	FBS #1	Floating Bridge Site- Madison Creek
Shoot House 5	Live-Fire Shoot House/ Zero Range	FBS #2	Floating Bridge Site- Williams Drain
Range 53	IPBC Infantry Squad/Platoon Battle Course	Training Area 12 & 24	Land Navigation

Safety - Federal Employee Compensation Act (FECA)

Through the efforts of Soldiers, Department of the Army civilians and other Fort Riley community members, USAG Fort Riley continues to be the installation with the lowest total FECA costs compared to all like installations.

	<u>MEDICAL COST</u>	<u>COMPENSATION COST</u>	<u>TOTAL</u>
2021	\$55,564	\$68,197	\$123,761
2022	\$38,309	\$71,566	\$109,875
2023	\$39,889	\$182,818	\$222,707
2024	\$99,817	\$205,114	\$304,931
2025	\$101,168	\$203,308	\$304,476

Cost-Conscious, Safe and Efficient Installation

- FECA cost is a significant data point for selection of safety achievements.
- Fort Riley continues to have the lowest workers' compensation cost in IMCOM Readiness with Fort Riley below the next comparable installation by \$216K.
- As of 9 December 2025, no Class A Mishaps in 21 consecutive years and No Class B Mishaps for 7 plus years.
- Fort Riley Garrison Safety Office was awarded the FY24 SECARMY Exceptional Organization Award of Excellence in Safety

FECA data provided by the Garrison Safety Office.



Housing - On-Post Residential

Corvias manages family housing at Fort Riley in close partnership with the Garrison Housing Management Office. As the Army's private housing partner, Corvias works alongside installation leadership to ensure Soldiers and their families have safe, well-maintained homes, responsive customer service, and dependable support for all maintenance needs.



Housing data provided by DPW and Corvias.

Corvias

Family Quarters	3,865
- Officer	441
- Enlisted	3,424
Total Square Footage	6,649,141
Community Centers	5
Neighborhood Pools	4



Basic Allowance for Housing (BAH)

The Basic Allowance for Housing (BAH) is a U.S.-based allowance prescribed by geographic duty location, pay grade and dependency status. It provides uniformed service members (SM) equitable housing compensation based on housing costs in local civilian housing markets within the United States when government quarters are not provided.



Military Service Grade	BAH Paid to SMs Collecting BAH w/ Dependents (non-barracks SM)
E1-E4	\$41,827,404
E5-E6	\$47,474,721
E7-E9	\$19,178,367
O1-O2	\$10,463,049
O3-O4	\$16,241,928
O5-O8	\$2,724,915
W1-W2	\$7,513,476
W3-W5	\$2,184,180
TOTAL	\$147,608,040

Fort Riley's BAH rate is among the lowest among division-level installations, making it cost effective and fiscally beneficial to the DOD and the Army.

Military BAH payroll provided by Army Military Pay Office.

BAH totals include SMs living both off post and in Corvias on-post family housing.

Housing - Army Barracks Management Program

Army Barracks Management Program (ABMP) is part of the Army plan to improve the quality of life for single Soldiers and to standardize the management of barracks Army-wide. Goals of the program include improving barracks utilization, managing vacant barracks space during deployment, reducing maintenance response time, decreasing building damages and extending the life of the facilities.

- 66 buildings managed at company level
- 9 Soldier community buildings
- Footprints down to company level
- Basic repair & upkeep performed at company level
- Sustainment and modernization phased out to 2035
- Soldier accountability and responsibility
- Completed an innovative first-of-its-kind modified 4+2 barracks design; encourages Soldier interaction to reduce isolation and suicidal ideations
- Fort Riley competed and received:
 - \$56.9M in FY20 for 4 barracks which came online FY23
 - \$18.5M in FY21 for 1 barracks to renovate and upgrade, which was renovated in FY24 and came online early FY25
 - Received \$40M for additional 4 barracks in FY23, which are currently under construction



Housing data provided by DPW.

Housing – Temporary Lodging / Hotel

Transitional Soldiers, families and guests of Fort Riley have the option of using the on-post hotel – InterContinental Hotels Group (IHG) Candlewood Suites.

Key Facility Highlights:

Guest Houses	3
Special Needs / Accessible Room Suites	9
Distinguished Visitors (DVQ)/Rooms	9
Total Hotel Rooms	109

Service Excellence:

The IHG Ft. Riley team demonstrates excellence in guest services earning them the Traveler's Choice of the Year in 2024 and is repeatedly acknowledged for excellent value, well-equipped facilities and complimentary services.



Community Contribution:

IHG Army Hotel, CWS continued to host the PCS Social in FY25 in collaboration with our very own Wednesday Guest Social. Included with this weekly social are members of the Family Assistance Group and representatives from a variety of local community organizations providing assistance and guidance to our transitioning service members and their families. Candlewood Suites IHG went above and beyond, proudly sponsoring several major MWR events and Army activities, including Fort Riley's Kids fest, Rock in' Riley and the Volunteer of the Year awards. Candlewood Suites IHG is committed to exploring new ways to support the Fort Riley community as well as the organizations from our neighboring community.



Innovative Cost Efficiencies

Fort Riley's cost-conscious culture is seen in the \$6.8M in FY25 validated cost efficiencies. Fort Riley continues to execute innovative cost savings partnerships, to include five active Intergovernmental Support Agreements (IGSAs) and more than 103 agreements with community partners.

	<u>Cost Avoidance</u>	<u>Cost Savings</u>	<u>Revenue Generation</u>	<u>Total</u>
FY21	\$3,610,828	\$1,574,862	\$187,466	\$5,373,156
FY22	\$4,870,267	\$3,489,982	\$189,966	\$8,550,215
FY23	\$4,596,016	\$8,150,896	\$189,966	\$12,936,878
FY24	\$4,886,697	\$2,846,273	\$189,966	\$7,922,936
FY25	\$2,890,944	\$3,674,287	\$189,966	\$6,755,197
Total (over 5 years)	\$20,854,752	\$19,736,300	\$947,330	\$41,538,382

Fort Riley – Kansas Traffic Safety Resource Office IGSA Renewal

The IGSA between the USAG Fort Riley Safety Office and the Kansas Traffic Safety Resource Office (KTSRO) allows a partnership to receive, provide, and share safety related resources and services that create cost savings, efficiencies, and enhance mission readiness through protection of lives and property for 1ID, USAG Fort Riley, and the State of Kansas.

Continuous Process Improvement (CPI) data provided by PAIO.

CPI reported totals may change from previously reported data based on continual review and documentation of efficiencies being performed on the installation.



On- & Off-Post Partner Organizations

On-Post (Federal or DOD)	On-Post (Non-federal, Non-DOD)	Off-Post
<ul style="list-style-type: none"> • 10th Air Support Operations Squadron (10th ASOS, USAF) • Army Field Support Battalion - Riley (AFSBn-Riley), 407th AFSB • Army Military Pay Office (AMPO) • 84th Explosive Ordnance Battalion (EOD) • Army and Air Force Exchange Service (AAFES) • Army Benefits Center-Civilian (ABC-C) • Civilian Human Resources Agency (CHRA) • Criminal Investigation Division (CID) • Defense Commissary Agency (DeCA) • Defense Logistics Agency (DLA) Disposition Service • Detachment 2, 3rd Combat Weather Squadron (USAF) • Kansas Army National Guard Maneuver and Training Equipment Site (MATES) • KS Small Market, Stand-Alone Military Medical Treatment Facility, Defense Health Agency (DHA) • Dental Activity (DENTAC) • Mission Installation Contracting Command (MICC) – Riley • Midwest Region Network Enterprise Center (RNEC) • Special Operations Recruiting Battalion • U.S. Army Communications-Electronics Command • U.S. Army Corps of Engineers • U.S. Army Counterintelligence Command, Region III • U.S. Army Veterinary Command • U.S. Department of Veterans Affairs • Center for Military History (2 Museums) <p>Fort Riley USAG partners with 123 separate on- & off-post agencies to provide integrated installation and regional services in support of Big Red One Soldiers, families, civilians and retirees, making Fort Riley and the Central Flint Hills Region of Kansas a great place to live, train, deploy from, come home to and retire!</p>	<ul style="list-style-type: none"> • Adjutant General's Corp Regimental Association • American Federation of Government Employees (AFGE) Local 2324 • American Red Cross-Service to the Armed Forces • Barton Community College • Big Red One Chapter of the United States Field Artillery Association • Boy Scouts of America • Girl Scouts of America • Cub Scout Packs 3260 and 3660 • Catholic Women of the Chapel • Combined Scholarship Fund • Corvias (Contractual) • Drunk Driving Prevention Program • Envision Xpress, Base Supply Center • Flint Hills Signal Corps Regimental Association • Fort Riley Central Kansas Chapter of the Association of the United States Army (AUSA) • Fort Riley Spouses Club • Fort Riley Military Vehicle Club • Fort Riley Outdoorsman Group (FROG) • Friends of the Fort Riley Museum • Intercontinental Hotels Group (IHG) (Contractual) • Military Community Youth Ministry Club • Military Police Regimental Association • Navy Federal Credit Union • Partners of the First Territorial Capital • Protestant Women of the Chapel • Sergeant Audie Murphy Club • Society of the First Infantry Division (BRO) • U.S. Department of Agriculture • U.S. Department of Veterans Affairs • USO Kansas (United Service Organization) 	<ul style="list-style-type: none"> • Airstream Renewables Inc. (TAP) • Adopt-a-School (16 USDs) • Troops into Transportation (TAP) • Central Kansas Military Community Foundation • Civil Air Patrol • Elected Officials • Emporia State University • Flint Hills Job Corps • Flint Hills Regional Council • Heroes MAKE America (TAP) • Home Builders Institute (TAP) • Junction City Chamber of Commerce • Junction City Military Affairs Council • Kansas Department of Transportation • Kansas Employment Exploration Program (8 Participating Communities) • Kansas State University • KANSASWORKS (TAP) • Lady Troopers • Little Apple Brigade • Manhattan Chamber of Commerce • Manhattan Military Relations Committee • Manhattan, Junction City, Ogden and Milford Lake Parks & Recreation • McConnell AFB (DoD) • National Bio and Agro-Defense Facility • Old Troopers • Region Reimagined • Regional Airports: Manhattan, KS, Salina, KS, and Topeka, KS • Ryder (TAP) • Total Army – 9 states (TAGs) • Unified School District (USD) 383 • Unified School District (USD) 475 • Union Pacific Railroad • University of Kansas


Soldier Transition

- In FY 2025, 2400 Soldiers transitioned from Fort Riley
- On average, 2,100 to 2,200 Soldiers transition from Fort Riley to civilian jobs annually
- 48 (2%) of transitioning Soldiers stayed in Kansas in FY25
- Military Occupational Specialties translate to many civilian job skills

Security	Network Engineer	Chaplain	Veterinarians
Engineer	Paralegal	Dental	Railway Crewmembers
Construction	Police	Nurses/Doctors	Truck Drivers
Plumber	Police Dog Handler	Orthopedics	Transportation Management
Firefighter	Financial Management	Pediatrics	Diesel Mechanics
Surveyor	Human Resources	Radiology	Electronics Repairer
Aviation Maintenance	Musician	Cardiovascular	Logistical
Air Traffic Control	Columnists	Respiratory	Recruiters
Electrician	Broadcasting	Nutrition	Water Treatment
Information Technology	Counselors	Pharmacy	Mortuary Affairs

Fort Riley Career Skills Program (CSP)

These programs allow Soldiers to attend apprenticeship or internships, 180 days from separation, with an honorable discharge, good standing with command and command authorization.

Program	Completion
	Troops into Transportation
	23 Graduated
	Airstream Renewables
	729 Graduated
	Home Builders Institute
	597 Graduated
	Heroes Make America
	481 Graduated
	KansasWorks/Internships*
	811 Completed



* Kansas Based

Transition Opportunities

Kansas Employment Exploration Program (KEEP) for Transitioning Service Members/TAP participants

KEEP is a Fort Riley Transition Assistance Program (TAP) initiative designed to encourage transitioning service members to settle down and remain in Kansas after completing their military service. Attendees receive community tours and are introduced to employers and city leaders to discuss job opportunities, salaries and the quality-of-life options available to them in the community.

Key highlights / mutual benefits include:

- Provides Kansas communities with skilled labor force
- Reduces unemployment among transitioning Soldiers
- Increases community veteran/veteran-retiree populations and associated economic impacts

2025 Participating Communities

KEEP Tours in FY25 included visits to Manhattan, Topeka, Lawrence, Wichita, Junction City and Ottawa, KS.

FY26 Planned Communities:

- Shawnee, Kansas
- Manhattan, Kansas
- Wichita, Kansas
- Junction City, Kansas
- Topeka, Kansas
- Ottawa, Kansas

USO Pathfinder Transition Program

The USO Transition Program extends the USO experience to active-duty, Reserve, National Guard and military spouses by offering professional development services throughout the duration of military service as well as in preparation for post-military life. USO Transition Program specialists help develop a personalized action plan and help them take full advantage of services and resources that are the best fit. In 2025 the USO Transitions Program team served more than 500 transitioning service members, military spouses and their families.

The USO Pathfinder Transition Program works with strategic partners to connect service members and military spouses to resources through a holistic approach, focusing on:

- Employment, Resume Writing, Job Seeking
- Education
- Financial Readiness
- Mentorship
- VA Benefits Support



Quality of Life

Army & Air Force Exchange Service (AAFES)

Did you Know? In 2025...

This year we Noffy Coffee, Patriot Tattoo, Good Deed Business Center, U-Haul Truck Rental and Fan Stand Vending.

Additionally, Fort Riley Exchange contributed \$1,720,906 to MWR in support of quality-of-life programs and manages over 60 contracts.



Food Services

Burger King
Charley's (2)
Starbucks
Noffy Coffee
Subway (2)
Panda Express
Qdoba
Popeye's
Buffalo Wild Wings
Dunkin' Donuts / Baskin Robbins

Other

Main Post Exchange
Post Exchange Annex
Barber Shop (2)
Expresses (5)
Military Clothing Sales (2)
Patriot Tattoo
Good Deed Business Ctr.
U-Haul Rentals



United Services Organization (USO)

USO Kansas is a dedicated pillar of support for military members and their families, serving both Fort Riley and the surrounding communities. Committed to fostering a sense of connection and belonging, USO Kansas offers a variety of programs and activities designed to engage every member of the military family—from toddlers to spouses and service members. Our center provides snacks, drinks and a welcoming recreation area with video games, computers and a variety of weekly events. With programs tailored to meet the diverse needs of our military community, we strive to create a home away from home for all who serve and serviced over 75,000 patrons in 2025.

Defense Commissary Agency (DeCA)

The Defense Commissary Agency operates a worldwide chain of commissaries, saving authorized patrons thousands of dollars annually on their purchases in the form of non-pay compensation estimated at \$7.39 million FY25 at Fort Riley. A core military family support element and a valued part of military pay and benefits, commissaries contribute to family readiness, enhance the quality of life for America's military and their families and help recruit and retain the best and brightest men and women to serve their country.



Quality of Life

Fort Riley Religious Services

16,970 volunteer hours were recorded in FY25 to support Fort Riley Chapel ministry. The volunteer hours equates to approximately \$560K in services supporting Soldier and family readiness and spiritual resiliency for more than 62,400 participants. This combat multiplier significantly strengthens 1st Infantry Division Soldiers and Families, improving quality of life and enhancing force projection capabilities.



Worship Locations

Victory Chapel
Historic Main Post Chapel
Saint Mary's Chapel
Morris Hill Chapel
Kapaun Chapel
Normandy Chapel
IACH Chapel
Outdoor Chapel



Fort Riley Post Library

In FY25 the Fort Riley Library had 31,414 items circulated as well as 203 family activities with more than 7,865 patrons in attendance.

Additional Resources / Events

- Audiobooks on CD
- Fiction & Non-Fiction DVDs, TV shows
- Video games for multiple platforms
- ASVAB, AFAST and GED exams
- Monthly family movie nights
- Military Reading
- Monthly theme parties
- Computer Labs
- Free eBook downloads



Quality of Life - DFMWR

The Directorate of Family and Morale, Welfare and Recreation provides recreation programs and services that increase the quality of life for community members and builds readiness and resiliency. DFMWR became nationally accredited in 2015 and re-accredited in 2021. The DFMWR staff's dedication to professionalism compels them to do things right, maintain strong peer relationships, keep up with trends, attract quality applicants for key positions and preserve credibility in the eyes of the community members.



Recreation Services

- Animal Shelter and Adoption Center
- Automotive Skills Center & Car Wash
- Better Opportunities for Single Soldiers (BOSS)
- Equipment Checkout Center
- Fort Riley Skeet & Trap Range
- Hobby Studio
- Leisure Travel Services
- Outdoor Adventure Center
- Riley's Community Center
- Spare Time Interactive Entertainment
- Warrior Adventure Quest
- Warrior Zone



Sports, Fitness & Aquatics

- Craig Fitness Center (open 24/7)
- Custer Hill Aquatic Park
- Eyster Indoor Pool
- Group Fitness and Personal Training
- Intramural Sports Program
- King Field House Fitness Center
- Leonard Fitness Center
- Long Fitness Center & Training Pool
- Robinson Fitness Center
- Whitside Fitness Center (open 24/7)

Quality of life data provided by DFMWR.

**For more information on MWR programs
and services visit riley.armymwr.com**

Quality of Life - CYS

During FY25, Child and Youth Services (CYS) maintained DOD certification and accreditation standards across CYS programs while maintaining a commitment to provide affordable, available, accountable and quality care. Warren CDC received National Association for the Education of Young Children (NAEYC) Accreditation and Custer Hill and Forsyth East SAC received expedited COA Accreditation. Youth Sports and Fitness increased participation by providing quality of life opportunities for children at Fort Riley.



Child and Youth Services

Outreach Services

- Parent Central Services
- School Support Services (SLO)

Youth Sports and Fitness

- SKIES Unlimited Instructional Program

1st Division Child Development Center

Custer Hill School Age Center

Custer Hill Youth Center

Forsyth Child Development Center

Forsyth East School Age Center

Warren Child Development Center

Warren East Child Development Center

Whitside Child Development Center

Whitside North Hourly Care

Family Child Care

Family Services

Child Care Centers	5
- Capacity:	~700
Certified Family Child Care Homes	10
- Capacity:	~60
School Age Services	2
Youth Center	1



Quality of Life - ACS

The mission of Army Community Service (ACS) is to facilitate the commander's ability to provide comprehensive, standardized, coordinated and responsive services that support Soldiers, Army civilians, retirees and their family members regardless of geographical location and to maximize technology and resources, eliminate duplication in service delivery and measure service effectiveness.



Army Community Service (ACS)

- Army Emergency Relief
- Army Family Action Plan
- Army Family Team Building
- Army Volunteer Corps
- Employment Readiness
- Exceptional Family Member Program
- Family Advocacy Program
- Financial Readiness Program
- Information and Referral
- Military and Family Life Counselors
- Mobilization, Deployment and Stability, Support and Operations
- New Parent Support Program
- Relocation Readiness
- Resilience Training
- Survivor Outreach Services
- Victim Advocacy Program

Program Utilization in FY25

Simple Contacts (<15 min.)	95,929
Extended Contacts (>15 min.)	6,810
Classes, briefs and sessions	2,311
Total patrons supported (Soldiers, civilians, retirees and their family members)	210,220



Quality of Life - Community Service

Volunteer Services

Fort Riley Soldiers, family members and civilians contribute a vast amount of volunteer service both on and off the installation. Through coordination with the Army Volunteer Corps office, dedicated individuals provide values-based, high-quality, cost-efficient services that contribute to resiliency and quality of life for people living in the Flint Hills Region.

	<u>Volunteer Hours</u>	<u>Cost Avoidance</u>
2021	60,487	\$1,811,589
2022	58,399	\$1,749,058
2023	73,521	\$2,274,368
2024	85,702	\$2,651,179
2025	66,677	\$2,319,693
Total (over 5 years)	344,786	\$10,805,887



Army Emergency Relief (AER)

AER is the official non-profit of the U.S. Army and provides grants, interest free loans and scholarships to promote readiness and relieve financial distress of Soldiers, their families, and retirees.

Total assistance provided through Army Emergency Relief to Fort Riley area active service members, dependents, and retirees in FY25 - \$1,322,527



Volunteer data provided by DFMWR – Army Community Service.

FY25 Data Contributors

1st Infantry Division Headquarters	General Services Agency (GSA)
10th Air Support Operations Squadron (10ASOS)	InterContinental Hotels Group (IHG)
407th Army Field Support Battalion (AFSBn – Riley)	Kansas Army National Guard (KSARNG)
American Red Cross	KS Small Market, Stand-Alone Military Medical Treatment Facility, Defense Health Agency (DHA)
Army and Air Force Exchange Service (AAFES)	Maneuver and Training Equipment Site (MATES)
Army Military Pay Office (AMPO)	Mission and Installation Contracting Command (MICC)
Aviation Field Maintenance Activities	Navy Federal Credit Union
Center for Military History (Fort Riley Museums)	Network Enterprise Center (NEC)
CWTSatoTravel	Office of Personnel Management (OPM)
Civilian Human Resources Agency, SW Region	Plans, Analysis and Integration Office (PAIO)
Corvias	Public Affairs Office (PAO)
Defense Commissary Agency (DeCA)	Religious Support Office (RSO)
Defense Counterintelligence and Security Agency	Resource Management Office (RMO)
Defense Human Resources Activity - Office of the Actuary	Secretary to the General Staff (SGS)
Dental Activity Command (DENTAC)	U.S. Army Corps of Engineers
Detachment 2, 3rd Combat Weather Squadron	U.S. Army Foundry Program (742 nd MI BN)
Directorate of Emergency Services (DES)	U.S. Army TMDE Support Center
Directorate of Family, Morale, Welfare, & Recreation (DFMWR)	Unified School District #475
Directorate of Human Resources (DHR)	Unified School Districts within the Central Flints Hills Region
Directorate of Plans, Training, Mobilization, & Security (DPTMS)	United Services Organization (USO)
Directorate of Public Works (DPW)	United States Postal Service (USPS)
DLA Information Operations Ft Riley	VYVE Broadband
Envision Xpress BSC	Veterans Affairs (VA)
Equipment Concentration Site #33 (ECS)	Veterans Health Administration (VHA)

Fort Riley Links:

Public Website: <https://home.army.mil/riley/>

Facebook: www.facebook.com/FortRiley

X: <https://x.com/FortRiley>

Instagram: <https://www.instagram.com/fortrileypao/>



U.S. ARMY



Fort Riley – An Award-Winning Installation:

- SECARMY Energy and Water Management Award (four consecutive years 2020 thru 2023)
- DA HRC Transition Assistance Program Award for Mid-Size Installations (five consecutive years 2019 thru 2023)
- Federal Energy Management Program (FEMP) Award (2022)
- Army Community Partnership Award (2022, 2021, 2019)
- SECARMY / CoS Army Exceptional Organization Award of Excellence in Safety (seven of last ten years)
- Six-time winner of U.S. Army Safety Excellence Streamer Award (2023)
- U.S. Army Annual OPSEC Award (2021)
- Chief of Staff of the Army Award of Excellence in Legal Assistance (2023)
- Thirty Kansas Press Association Awards (2020, 2019)
- National Gold Medal Plaque Award for Excellence in Park and Recreation Management (2020)
- IMCOM CYS Team Award of Excellence (2019)

“Fort Riley – A Great Place to Live, Train, Deploy From, Come Home To, and Retire”





Prepared by:

United States Army Garrison - Fort Riley
Plans, Analysis, and Integration Office
785-240-0586 / DSN 520-0586