



Welcome to USAG Rheinland-Pfalz



WE ARE THE ARMY'S HOME



COL Jeffery C. Higgins
Garrison Commander
USAG Rheinland-Pfalz

Welcome to USAG Rheinland-Pfalz

Ground Rules

Ensuring a productive and respectful discussion during the Townhall:

- ☐ **Raise Your Hand for Microphone:** If you would like to ask a question, please raise your hand and wait for a microphone to be brought to you.
- ☐ **State Your Name:** Before asking your question, please state your name.
- ☐ **Ask Clear, Concise Questions:** Keep your questions brief and to the point.
- ☐ **Wait for a Response:** Once you've asked your question, allow the speaker or panel to respond fully before following up.
- ☐ **Limit Follow-Up Questions:** If time allows, limit follow-up questions to a couple of quick clarifications.
- ☐ **Wait for Microphone Assistance:** If you're having trouble with the microphone, raise your hand, and someone will assist you.



Welcome to USAG Rheinland-Pfalz

Leadership



JEFFERY C. HIGGINS
COL, IN
COMMANDER



WELCOME



RAYMOND H. WRENSCH
CSM, USA
COMMAND SERGEANT MAJOR



PAUL S. HOSSENLOPP
DEPUTY to the GARRISON
COMMANDER



MARK A. COLBROOK
DEPUTY GARRISON
MANAGER



Welcome to USAG Rheinland-Pfalz

Agenda

☐ **Opening Remarks**

☐ **Ground Rules**

☐ **Agenda:**

1. Baumholder Overview (CMD Team) (7 min)
2. Navigating Baumholder (3)
3. Travel (3)
4. Childcare (FMWR) (5)
5. Afterschool Programing (FMWR) (3)
6. Employment Opportunities (Human Resource Office/FMWR) (3)
7. Recreation Opportunities (3)
8. Schools (DODEA and FMWR) (7)
9. Medical Services (5)
10. Housing (DPW Housing) (7)
11. Transportation (LRC) (5)

☐ **Questions**

☐ **Closing Remarks**

Welcome to USAG Rheinland-Pfalz

Garrison Participant List

Garrison Commander	COL Higgins	DFMWR - School Liaison	Ms. Lynn Rice
CSM	CSM Wensch	DoDEA	Mr. David Kretz
DGC	Mr. Hossenlopp	DPTMS	Mr. Harris
DGM- Baumholder	Mr. Colbrook	DPTMS	Mr. Wucik
DHR	Mr. Beando	PAO	Ms. Muckenfuss
DPW	Mr. Monson	PAO / Host Nation Liason	Mr. Mai
DPW - Housing	Mr. Harald Kastner	PAIO	Mr. Dearing
DPW - Housing	Mr. Immesberger	PAIO	Mr. Osewalt
DPW - Housing	Ms. Tae Jindra	RSO	MAJ Ginsburg
DFMWR	Mr. Etchell	Safety	Mr. Alden
DFMWR - CYS	Mr. Rody	LRC	Mr. Wood
DFMWR - ACS	Ms. LeMauk	BMC Army Health Clinic	LTC Smith
DFMWR - Outdoor Rec	Ms. Pope	EFMP	Mrs. Ginel Kennedy
DFMWR - Employment Readiness	Ms. Bienes		



Mission and Vision

MISSION

USAG Rheinland-Pfalz serves, supports and secures the total force community enabling power projection for the European Theater.

**LEADER
DEVELOPMENT**

READINESS



**ENABLING THE
ALLIANCE**

VISION

A trusted team of Army Professionals dedicated to supporting our mission partners and communities. We deliver world-class garrison services and enable readiness to meet emerging requirements.



WE ARE THE ARMY'S HOME



US Army Garrison Rheinland-Pfalz AOR

Legend:

Army Installation or Site

USAF Installation or Site

Host Nation Transfer

29 sites spread across Germany, supporting about 8,000 Military personnel and a community of about 36,000 DoD Civilians, Contractors, Host Nations Employees, Family Members, and Retirees totaling a population of about 44,000.



Welcome to USAG Rheinland-Pfalz

BMC Services Crosswalk

US Army Garrison Rheinland-Pfalz | **Baumholder Military Community**

THE ROCK: ONE SITE-OUTSTANDING SUPPORT!



Nestled within a welcoming German village, the Baumholder Military Community (BMC), or "The Rock," offers a **full Garrison's worth of support and recreation**. Its strategic location not only **embraces Soldiers and families** but also grants easy access to host-nation activities and travel to four neighboring countries. The Rock isn't merely an installation – it's a **thriving military crossroads providing world-class support** to Soldiers, Family Members and Civilians.

Supportive to military spouses, BMC also provides **ample appropriated fund (GS) and nonappropriated fund (NAF) employment opportunities** through Army Community Service, USAJobs and more.

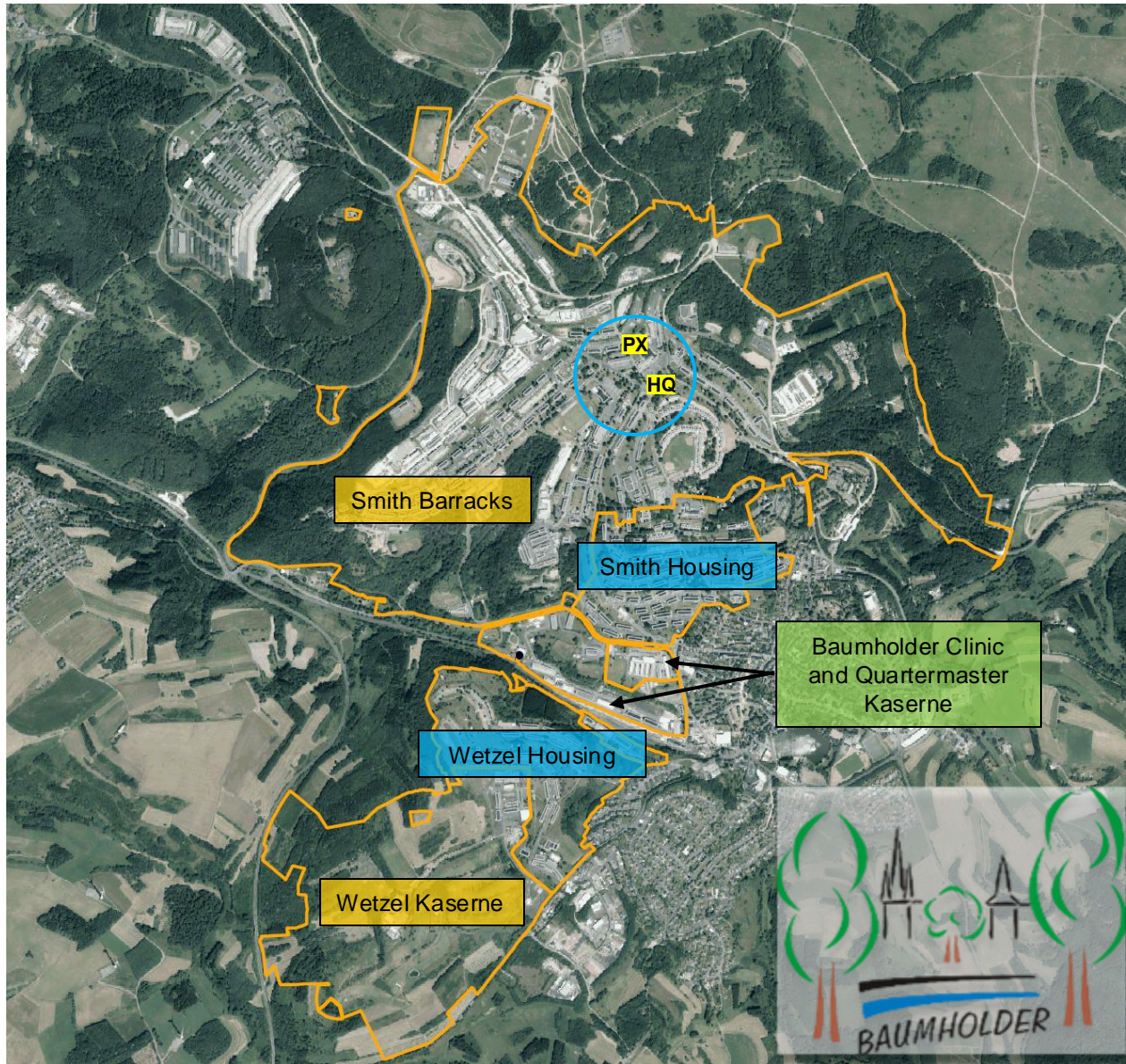
AAFES Exchange	✓
AAFES Theater	✓
ACS	✓
Army Lodging	✓
Arts & Crafts Center	✓
Auto Skills Center	✓
Barber Shop	✓
Bowling Center	✓
Campgrounds	✓
CDC	✓ (2)
Central Issue Facility	✓
Chapel	✓ (2)
Commissary	✓
Community Bank	✓
Conference Center/Club	✓
Dental Clinic	✓
DFAC (x2)	✓
DODEA Elementary	✓
DODEA Middle School	✓
DODEA High School	✓
Education Center	✓
Family Housing	✓
Fire Station	✓
Fitness Center	✓ (2)
Food Court	✓
Gas Station/Shoppette	✓
Golf Course	✓
Indoor Swimming Pool	✓
Java Café	✓
Legal Center SJA	✓
Library	✓
Medical Clinic	✓
Military Clothing Sales	✓
Outdoor Recreation	✓
Post Office	✓
POV Ship/Inspection/Reg.	✓
School Age Center	✓
Service Credit Union	✓
Soldier For Life; VA	✓
Transportation/SATO	✓
Thrift Shop	✓
UTAP/VAT Office	✓
Warrior Zone & BOSS	✓
Youth Services/Teen Center	✓
Youth Sports	✓

Travel Times:

Ramstein Air Base:	30 minutes
Landstuhl Medical Center:	45 minutes
Hahn Airport:	60 minutes
Kaiserslautern:	60 minutes
Frankfurt Airport:	90 minutes
Luxembourg City:	2 hours
Brussels:	4 hours

Welcome to USAG Rheinland-Pfalz

BMC Future Development Plan



Major Quality of Life Projects:

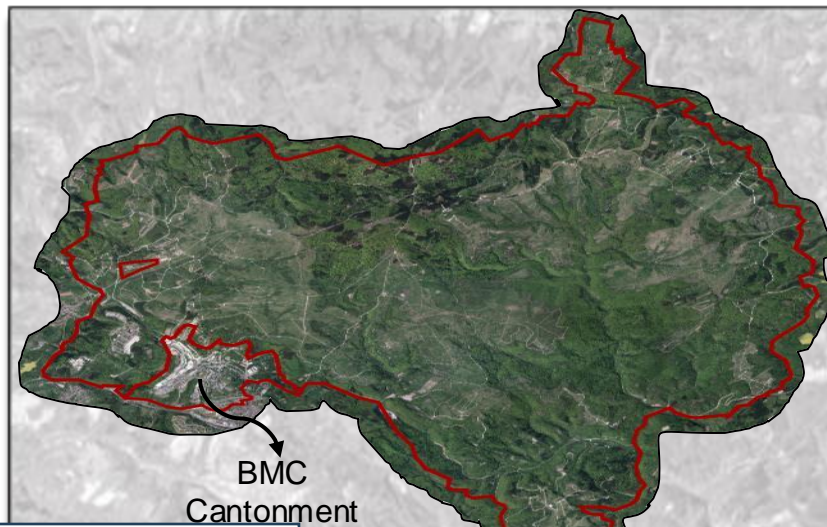
- 258 Townhouses
- 48 Tower Apartments
- Right-sizing / Balconies / Rolladens /
- Elementary School
- Middle/High School
- New Lodge
- PX Roof Replacement
- Multiple Paving Projects
- New Barracks
- New Parking Garage

Military Training Areas (MTA) & (LTA)

Range Development

MILCON Projects:

1. 2 Story LFSH
2. Sniper Rappel Tower
3. Breach Facility
4. 2,000m Sniper Qual
5. 1,600m KD Range
6. Single Story LFSH
7. Breach Facility
8. 50m Indoor Range
9. 2 Story LFSH



*“Training,
Right out your back
door!”*

- 3rd Largest Training area in Germany
- # 1 is Magdeburg
- # 2 is Graf / Hoehenfels

BMTA Facilities

- 29,000 Acre Training Area
- 28 Ranges
- 3 Tank / Bradley Ranges (To Table VI, X-XII)
- 3 Convoy Live Fire Ranges (Ranges 7, 11, 35)
- 2 C-IED Lanes (Ranges 21 and 35)
- UAS Operations
- Rotary Wing Gunnery Range (Range 35)
- 300m Automated Record Fire Range (Range 21)
- Live Fire Squad Assault Course (Ranges 21, 7, 11)
- 109 Artillery/Mortar Firing Positions
- 3 Demolition Ranges + 4 Hand Grenade Pits
- 4 Drop Zones (Kirsten, Ausweiler, Andrea, Viking)
- 4 Bivouac Sites
- 18 Maneuver + Dry Training Areas
- Range Support Branch and Target Support (Electrical, Mechanical, and Carpentry Shops)



LTA Facilities

- 146 Acres
- Indoor Range (25M), 3 Lanes
- CP Range (25M) / CPQC Range
- MOUT Site (16 Bldgs.)
- Rappel Tower
- CBRN Chamber
- 4 Classrooms
- 5 Training Areas
- Water Operations
- Hand Grenade Qualification Course (HGQC)

- The LTA is U.S. owned and can operate 24/7
- LTA Facilities scheduled in the Range Facility Management Support System (RFMSS)



Baumholder and Vicinity

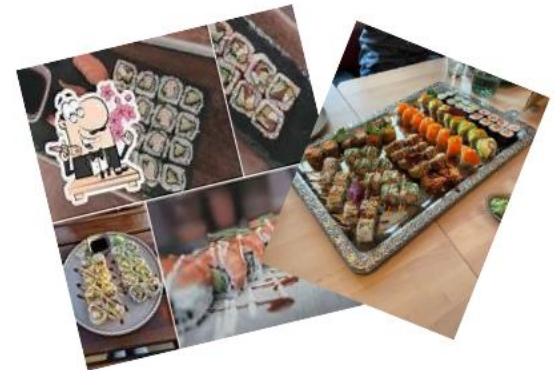
Rural city life

Living in the city and in the village, these are the two things Baumholder has to offer. Our small town offers many shopping opportunities, affordable housing for rent, as well as good public transport by bus and train to the surrounding towns of Birkenfeld, Idar-Oberstein and Kusel.

Zum Stern, Ausweilerstrasse 2, Baumholder
German cuisine <https://www.zum-sternbaumholder.de/>



Yomi, Kennedyallee 26, Baumholder, Phone: 06783 – 9008 878
Asian Fusion <https://www.yomi-baumholder.de/>



Baumholder and Vicinity

Föckelberg, Wildpark Potzberg - 33min
www.wildpark.potzberg.de



Thallichtenberg, Burg Lichtenberg, castle/hotel/restaurant, - 17min
<https://burglichtenberg.pfaelzerbergland.de/>



Baumholder and Vicinity

Freisen, Naturwildpark - 17min
www.natur-wildpark-freisen.de



Mörsdorf/Sosberg, Geierlay Hängeseilbrücke, Geierlay suspension bridge - 1hr 24min



Sankt Wendel, Easter Market (March or April), Halloween around the city 31 October (suited for adults), Christmas and Medieval Market



Homburg, Schlossberghöhlen – Caves in the city of Homburg - 42 min



Trier, historic and picturesque city - 57 Minutes



Hahn Airport, Gateway to Italy, Ireland, Spain and more worth considering when travelling - 59 min

**Baumholder
Train Station**



Frankfurt Airport, Germany's main international airport by passenger numbers, located in Frankfurt, Germany's fifth-largest city. The airport is operated by Fraport and serves as the main hub for Lufthansa, including Lufthansa City Line and Lufthansa Cargo as well as Condor and AeroLogic - 1hr 34min



Childcare

Child and Youth Services (CYS)

Child Development Centers (CDC) and School Age Center (SAC)

- Expected to have three CDCs operational providing a total of 270 CDC spaces. Smith CDC (62 spaces), Clinic CDC (82 spaces), and Wetzel CDC (126 spaces)
- Total physical capacity within CDCs meets the projected need for Full-day Child Care AND provide spaces for Part-time and Hourly Care options.
- One SAC facility on Wetzel (90 spaces) with enrollment of 68 children for SY24-25 and no waitlist for care.



Military Child Care.com

- Families needing childcare should visit [Military Child Care.com](https://militarychildcare.com) and request CDC and/or SAC childcare needs when PCS date is known.
- Parent Central Services (PCS) team will assist families to transfer CYS registration records history from Stuttgart to Baumholder via CYS Global Data Transfer.



Family Child Care (FCC)

- Family Child Care is another option for childcare within government housing on-post and an employment opportunity for spouses to earn income as well as serve the community.

Recreation Opportunities

Directorate of Family and MWR

Only OCONUS program Nationally Accredited by the National Recreation and Parks Association!

On Smith Barracks:

- **Physical Fitness Centers** –
Mountaineer: Variety of Functional Fitness Equipment, Large Aerobic Area, renovated locker rooms, 24/7
Hall of Champions: Large Basketball Court in addition to fitness equipment, renovations set for FY25
- **Strikers Bowling Center & Pinsetters Pub:** 16 lanes, new scoring system and furniture, Shawingz
- **Java Café and Family Lounge:** central location Proudly Serving Starbucks with an activity area
- **Auto Skills Center / Auto Parts Yard:** work bays for self-help; oil changes, alignments, detailing services
- **Arts and Crafts:** variety of art classes for adults and children and arts and crafts supply store
- **Library:** comfortable environment with 26 computers, weekly children's programming and special events
- **Warrior Zone:** modern multi-purpose entertainment center for Soldiers!
- **Rheinlander & Tavern on the Rock:** newly renovated, catering for special events, Unit functions and private gatherings; regular weekend programming
- **Outdoor Recreation:** international trips and travel opportunities weekly; UTV and Bike tours; German Hunting License and German Fishing License Courses; Shooting Range; Largest Paintball Course in Europe; top of the line ski, snowboard, bike, and camping equipment rentals



On Wetzel Kaserne:

- **Rolling Hills Golf Course:** 9-hole scenic course with driving range, Disc and Foot Golf
- **Aquatics Center:** 50m pool for training and rec swimming; swim lessons & water aerobics
- **Campground:** campground in beautiful setting with add-on recreation packages available

For more information on these and other MWR events:

<https://baumholder.armymwr.com/>

<https://www.flickr.com/photos/mwrgermany/54014488197/>

Afterschool Programming

Child and Youth Services (CYS)

Youth Sports and SKIES Instructional Programs

- Youth Sports and Fitness programs are recognized for superior quality and diversity of sports and activities for youth 3-15yrs by the National Alliance of Youth Sports (NAYS). Our team and individual sports include Soccer, Flag Football, Cheerleading, Golf, Archery, Bowling, Basketball, Wall Climbing, Baseball, Track and Field, and Volleyball
- SKIES Instructional Programs include Gymnastics, Martial Arts, Swim lessons, Music lessons, and Dance classes. Contracted positions are available to teach SKIES classes!



Youth Center Programming

The award-winning Wetzel Youth Center is nationally recognized through our chartered affiliation with the Boys and Girls Club of America (BGCA). Our Youth Center offers a diversity of quality programs and recreational opportunities for youth (grades 6-12) and is considered one of the best in the enterprise when it comes to youth recognition, grants, leadership & skills development and scholarship opportunities.



Employment Opportunities

- Transfer options of current Stuttgart CYS staff relocating to Baumholder through the Civilian Employment Assignment Tool (CEAT) to ensure continued spouse employment will be available. Visit <https://www.armymwr.com/programs-and-services/cys/civilian-employment-assignment-tool> to complete a CEAT transfer request.

Looking for a job?

JOIN OUR TEAM!



Army Community Services hosts quarterly Community Job Fairs in both the Kaiserslautern and Baumholder Military Communities.

We have opportunities for local nationals, military spouses and veterans!

US Citizens



Local Nationals



We offer:

- Full-time and part-time jobs
- Paid holidays
- Retirement opportunities
- Promotion opportunities
- Free optional wellness program
- Generous award program for outstanding performance

****Open Continuous announcements for US Citizens in postal and child and youth services**



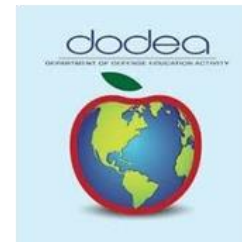
WE ARE THE ARMY'S HOME



• Opportunities



Multi National
Recruitment System
(MNRS): **65**
AF Civil Non-US: **85**



Contracting
(DOD,
Community
Services, etc.
– Indeed.de,
LinkedIn: **203**



- Community Bank, Service Federal Credit Union, Subway, TKS, Telekom, USO, American Red Cross, UMGC, Embry Riddle, etc.: **9**
- Professional Opportunities: Teachers, School Counselors, Nurses, Psychologist, Occupational and Physical Therapists, Social Workers, Financial Consultants, Health Care Providers, Project Managers, IT, etc. (**On-Going Recruitment**)

• Volunteer (Upskilling, Networking)

- Army VMIS: **1,161**

• Facebook Pages to Follow (Job Announcements, Trainings, Workshops, Classes, Hiring Events)

- ACS Calendar (QR Code)
- Baumholder 411
- Spangdahlem Air Base
- Kaiserslautern & Baumholder – Transition Assistance Program
- Ramstein Military and Family Readiness Center
- USAG Rheinland-Pfalz ACS
- Ramstein FSS
- 52D Force Support Squadron



• Commuting Distance from Baumholder

- Military Spouse Preference: 50 miles/80 kilometers radius of assigned installation
- Ramstein, Landstuhl, Kaiserslautern, Sembach, Spangdahlem AFB



WE ARE THE ARMY'S HOME



Baumholder Middle/High School

DoDEA Updates

Special Education:

- Community service levels are set via the OCONUS Directory—Stuttgart is Level 3 and Baumholder is Level 2
- Needs based on the student's Individualized Educational Plan.
- EFMP screening with determine the travel recommendation.

Annual Staffing Review:

- Student enrollment & educator staffing levels are reviewed annually for all DoDEA schools
 - Estimated increase of 5 ES FTE and 2.5 MHS FTE.
- Process begins in the October 2025 assuming unit move in Summer 2026

Enrollment:

- Registration/re-registration is an annual requirement for all students via DoDEA's Family Portal.
- Process
 - Inform current school of pending withdrawal—can be completed via the Family Portal
 - Initiate new registration with gaining school following end of school year or withdrawal
 - Updated orders/assignment information is required.
 - 9th to 12th Grade students can conditionally enroll prior to arrival.

Transportation:

- Route plans are limited to 1-hour travel time per policy.
- Bus stops are generally co-located with host nation bus stops and are adjusted based on need.

Baumholder Elementary School

DoDEA Updates

Smith Elementary School:

- Current Capacity - 500
- Current enrollment—

Grade	PK	K	1 st	2 nd	3 rd	4 th	5 th	Total
Enroll.	56	55	52	33	41	47	42	326

Staff:

- Principal
- 17 Classrooms teachers
- Multilingual Learner Program
- Art, Music, Physical Education, and Host Nation
- Speech Language Pathologist
- Special Education Teacher

After School Activities

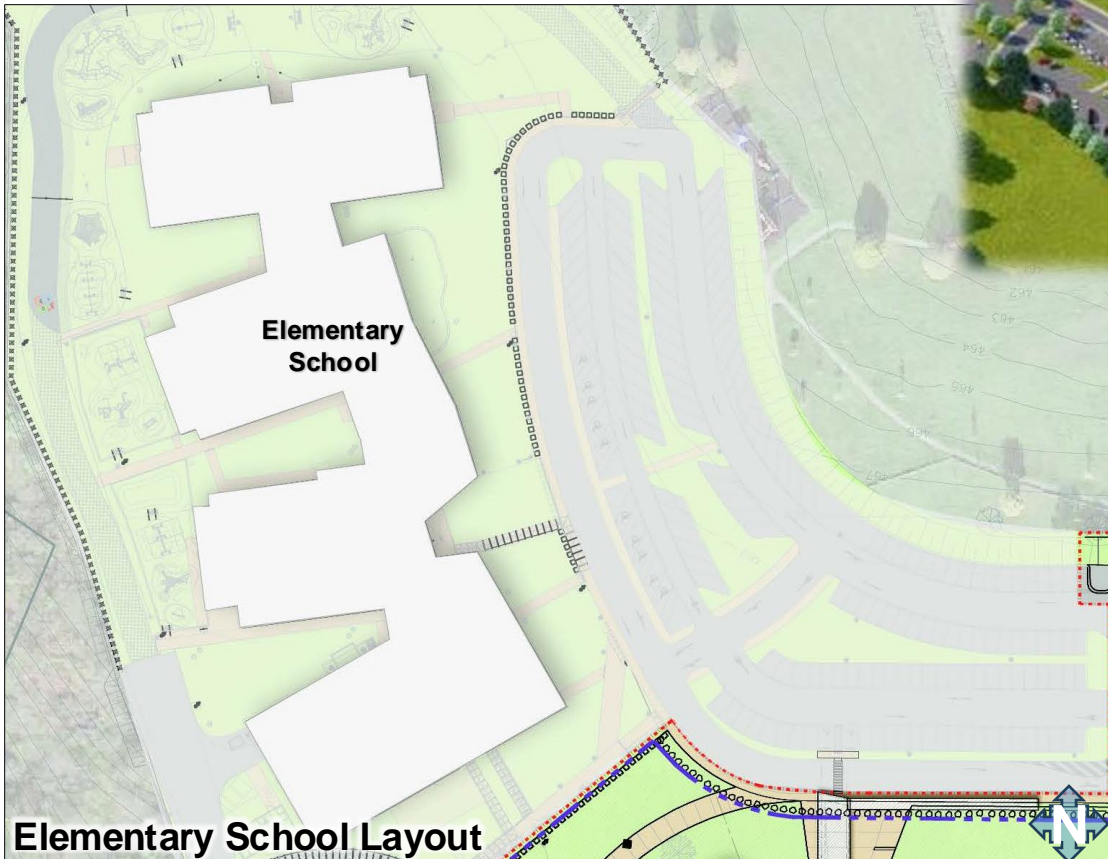
- Student Council
- Yearbook
- Board Game Club
- PE Club
- Lego Discovery Club
- German Club
- Art Enrichment
- Music Club



Baumholder Elementary School

DoDEA Updates

Elementary School: Provides an elementary school facility supporting 700 students by school year 2027/28 for grades pre-K through 5th.



Enrollment:

Current enrollment: ~290

Projected growth: ~143

Total: ~433

Capacity: ~700

Est. Completion: FY29

Baumholder Middle/High School

DoDEA Updates

Baumholder Middle/High School:

- Current Capacity - 500
- Current enrollment—

Grade	6 th	7 th	8 th	9 th	10 th	11 th	12 th	Total
Count	37	34	32	27	23	18	16	187

Staff:

- Principal and Assistant Principal
- 20 Classrooms teachers
- Multilingual Learner Program
- Art, Music, Physical Education
- Army JROTC Program
- Speech Language Pathologist
- Special Education Teacher



Athletics

- Football, Basketball, Cross Country, Soccer, Volleyball, Track and Field, Wrestling, Cheerleading, Marksmanship

Student Activities/Clubs

- STEMposium, Educators Rising, FIRST Tech Challenge, Jr. Science and Humanities Symposium, Dramafest, Color Guard, Drill, Junior Leadership Seminar, Mathcounts, Robotics, National Junior Honor Society, National Honor Society, Drama, Art, Yearbook

Baumholder Middle/High School

DoDEA Updates

Middle-High School: Provides a Middle/High school facility supporting 400 students, grades 6th through 12th by school year 2031/2032.



Enrollment:

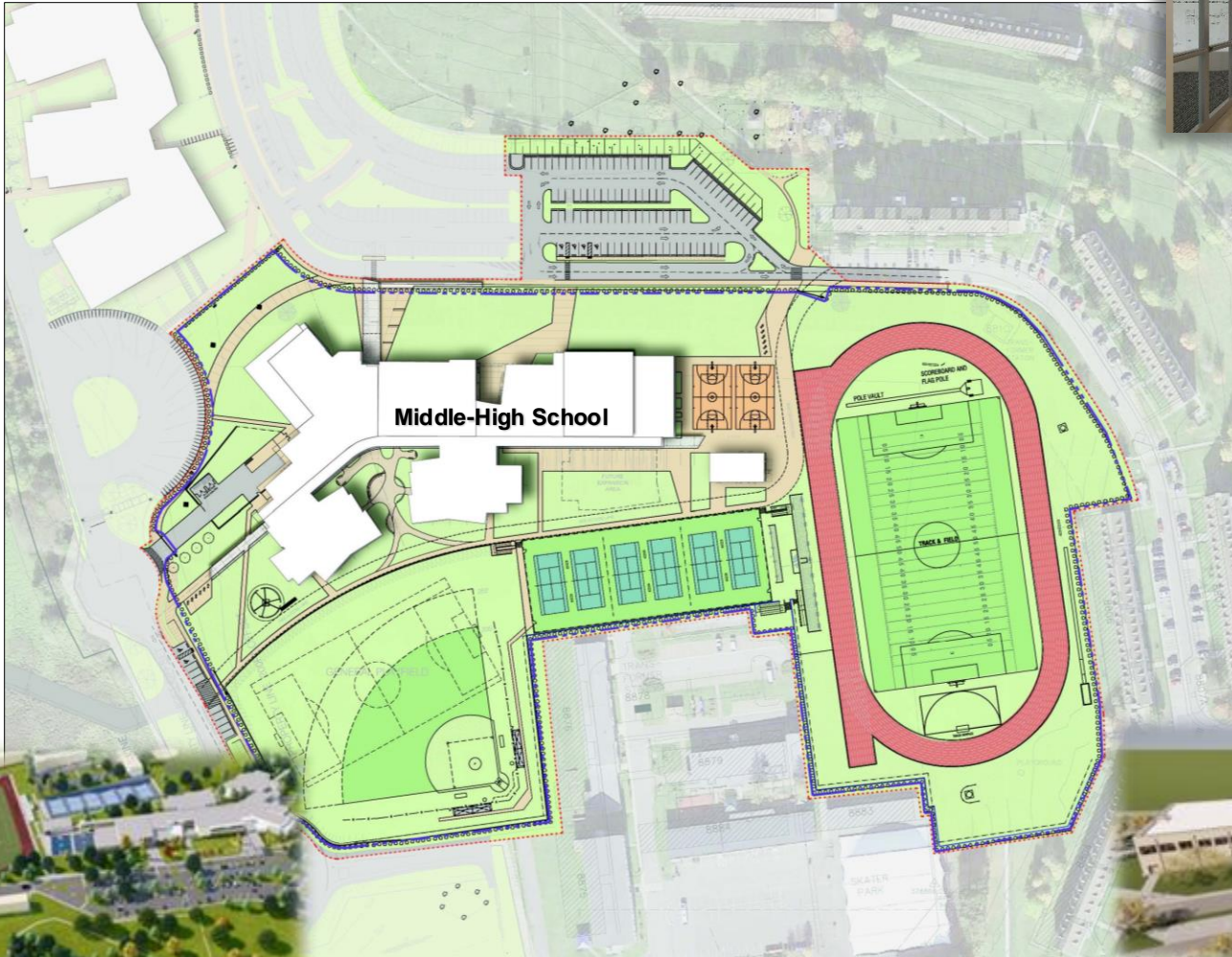
Current enrollment: ~183

Projected growth: ~86

Total: ~269

Capacity: ~400

Est. Completion: FY30



Important Information for Parents:

Grundschule Schools (Elementary School, grades 1-4)
To register, visit the school in the village you live in.
Each village has a Grundschule

Realschule Plus (Secondary Level School, grades 5-10)

Gymnasium (Secondary Level School, grades 5-12/13) Academic Secondary School

Families must purchase textbooks for the school year.
Keep in mind German/American schools have slightly different school calendar and strict attendance rules.

German Kindergartens (Day care):

To attend the German Kindergarten, contact the Kindergarten directly to be placed on the waiting list.

Katholischer Kindergarten: Breslauer Strasse 14, 06783-4161

Evangelischer Kindergarten: Kirchstrasse 13, 06783-5921



WE ARE THE ARMY'S HOME



Homeschooling in Baumholder

There is a support group in Baumholder:

Baumholder Homeschoolers
on Facebook

They plan field trips, special events, playdates.
Email: baumholderhomeschoolers@gmail.com



WE ARE THE ARMY'S HOME





Health Clinic

**4 Assigned Providers and
5 MTOE Providers
Supporting 60-90 Daily
Primary Care Appointments**



Physical Therapy

**Weekly Pelvic Floor Classes 1615-1700
& Pool PT**



**Among the Shortest Pharmacy Wait
Times of Army Health Clinics in
Europe < 12 mins.**

LTC Maxwell H. Smith /314-590-1185/ Maxwell.h.smith3.mil@health.mil



Dental Clinic

Health Clinic Services

- | | |
|----------------------------|---------------------|
| Patient Services | Immunizations |
| Post Deployment Health | Pharmacy |
| Reassessment (PDHRA) / | Physical Therapy |
| Periodic Health Assessment | Radiology |
| (PHA) | Tele Health |
| Behavioral Health | Well Woman Exams |
| • SUDCC | Sick Call (by appt) |
| • FAP | SRPs |
| EFMP | Public Health |
| Eye Clinic | • Hearing Booth |
| Primary Care | • Bod Pod |
| • Family Health | • STI Testing |

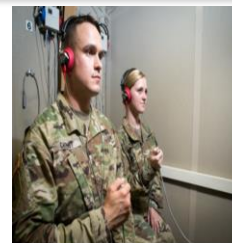
Dental Clinic Services

- | |
|-------------|
| Exams |
| Cleanings |
| X-Rays |
| Fillings |
| Extractions |
| Crowns |
| Bridges |
| Implants |
| Root Canals |
| Braces |
| Pedodontics |
| Biopsies |



**Pediatric Dentist
Open for Family Member Care**

**1 AD Comprehensive Dentist
4 AD General Dentists
1 AD Pedodontist
1 Contract Orthodontist
3 Contract Dental Hygienists**



UNCLASSIFIED // CUI



Specialty Services by Referral Site

Idar Oberstein Hospital

- OB/GYN
- Radiology

Birkenfeld Hospital

- GYN

Kusel Hospital

- Gastroenterology

Nardini Klinikum Landstuhl

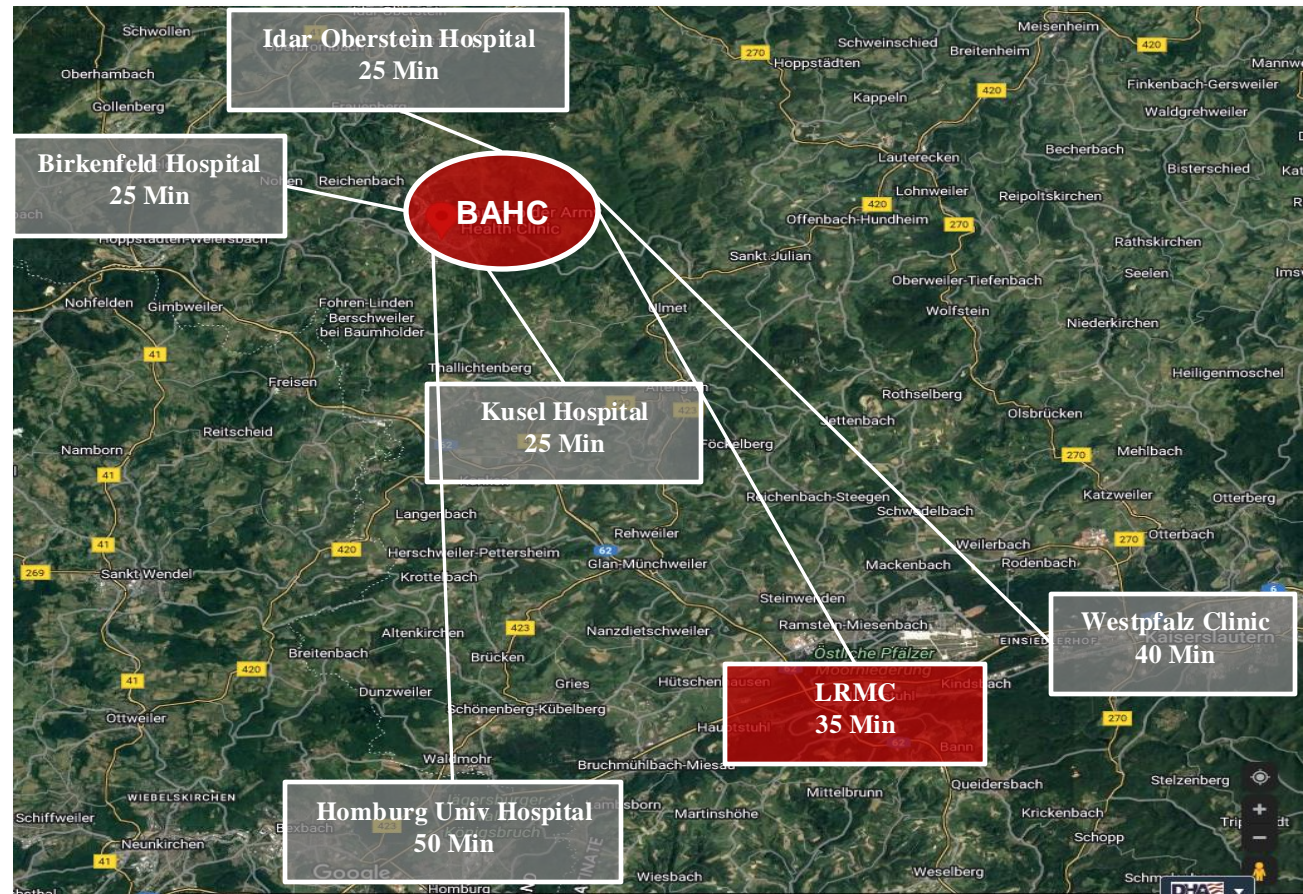
- OB/GYN

Westpfalz Clinic

- Peds Cardio, Neuro, Gastro, NICU
- Hematology/Oncology
- MRI (heart)
- OB/GYN

Homburg Univ Hospital

- All Pediatric Sub-Specs incl NICU
- OB/GYN
- Nephrology
- Ophthalmology
- Orthopedics
- Radiation
- Hematology/Oncology/Rheumatology
- Behavioral Health



LRMC Dental Specialty Services

- Oral Maxillofacial Surgery, Dental Imaging & Radiology, Prosthodontics, Orthodontics, Endodontics, Periodontics, and Comprehensive Dentistry
- Dental Laboratory Services are supported at the Baumholder Army Dental Clinic and Ramstein Area Dental Lab for faster results

☐ **Do I have to live on post?**

- Answer: Yes, unless Army Family Housing is not available for your Rank, Family Size and Bedroom Category within 60 days.
(General Cavoli's 95% mandatory on Post housing policy remains in effect for all of Europe.)

☐ **How do I get an ETP?**

- Answer: ETP request is submitted by SM through SM chain of command.

☐ **Where can I live within the Baumholder footprint?**

- Answer: Located within 35 miles or 57 KM

☐ **If I live in Ramstein feeder zone, can I get KMC OHA?**

- Answer: SM'S stationed in Baumholder will only receive the Baumholder OHA rate.



Contact Information Housing Management Division

Private Rental Housing: DSN 314-531-2996, COM 0611-143-531-2996

Unaccompanied Housing: DSN 314-531-3005, COM 0611-143-531-3005

Organizational email: usarmy.rheinland-pfalz.id-europe.list.usag-rp-housing-division@mail.mil

Chief, Housing Management Division: Mr. Harald Kastner

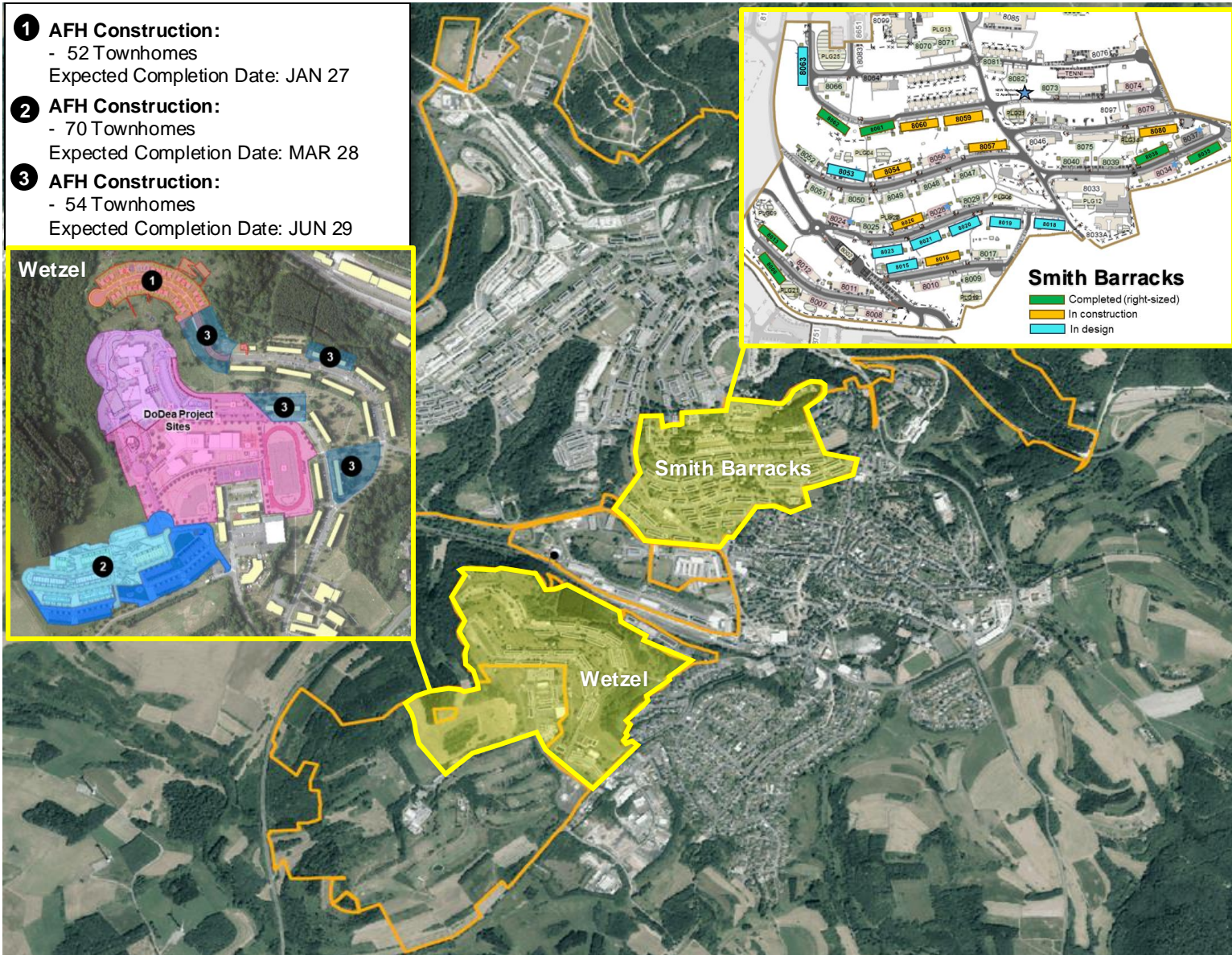
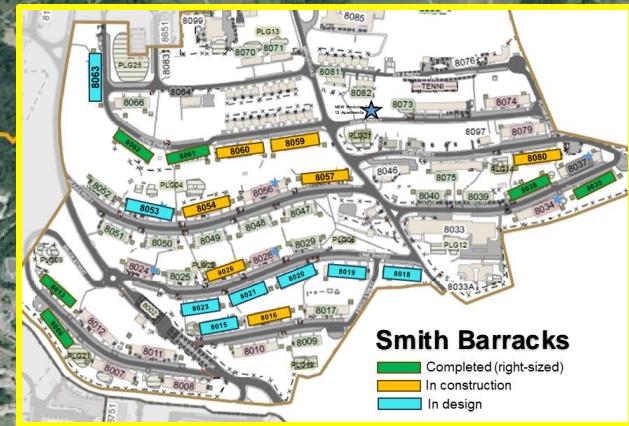
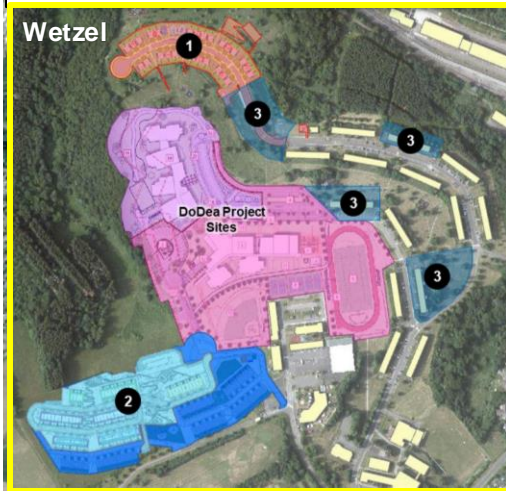
DSN 314-531-2970/2971, COM 0611-143-531-2970/2971

Army Family Housing:

DSN 314-531-2978, COM 0611-143-531-2978



- 1 AFH Construction:**
- 52 Townhomes
Expected Completion Date: JAN 27
- 2 AFH Construction:**
- 70 Townhomes
Expected Completion Date: MAR 28
- 3 AFH Construction:**
- 54 Townhomes
Expected Completion Date: JUN 29



Overview:

- **Building #:** 8017 JE
- **Bed Rooms:** 2-3 Bedroom apartments
- **Size:** 900 – 1041 sqft
- **Appliances:** American Washer and Dryer
- **Note:** Rolladen installed
- **Number of Units:** 529 (by end of FY26)



Rightsized AFH

Overview:

- **Building #:** 8062 JE
- **Bed Rooms:** 3-4 Bedroom apartments
- **Size:** 1500sqft
- **Appliances:** American Washer and Dryer
- **Note:** Rolladen installed
- **Number of Units:** 219 (by end of FY26)



Overview:

- **Building #:** 80117
- Completed in 2019
- **Bed Rooms:** 3-4 Bedroom
- **Size:** 1460 – 1620 sqft
- **Appliances:** German Washer and Dryer
- **Includes:** 2 Bathrooms (one shower, one bathtub); open Living/dining room with Kitchen; garage; storage attic; Patio and fenced in yard
- **Number of units:** 84 (by end of FY26) 7% of total housing inventory



Townhouse Categories

	3 Bedrooms	4 Bedrooms
JE	19	13
SE	13	15
CG	4	6
FG	4	4
K&E	6	

Line Haul Move

LRC-RP Baumholder Transportation

Line Haul Move

At Origin:

Contact Local Transportation Office:

Reach out as soon as orders are received.

Property Pickup Timeline:

Pickup is typically possible 5 working days after shipment is booked.

If Destination is Unknown:

Up to 90 days of storage is authorized to allow time to find housing.

At Destination:

Visit Baumholder Transportation Office:

Location: Building 8744, Room 4103 (1st Floor), Clinic Kaserne

This visit ensures quality control personnel are present during delivery.

Personally Procured Move (PPM)

LRC-RP Baumholder Transportation

Personally Procured Move (PPM)

At Origin:

Contact Local Transportation Office:

Reach out as soon as orders are received.

Obtain Signed DD2278:

Complete the Application for Personally Procured Move and Checklist.

Approval from the origin transportation counselor is required for TA50, professional books, papers, and equipment.

At Destination:

Visit Baumholder Transportation Office:

Location: Building 8744, Room 4103 (1st Floor), Clinic Kaserne

Provide Required Documents:

Signed DD2278

Empty and full weight tickets

Itemized operation expense list with receipts

Vehicle registration or rental contract

Upload Final Document Package:

Submit through the Smart Voucher portal.

Local Weigh Station

Coolrec RDE Rucknahmen

Address: Auf Schneewald 2, Baumholder 55774



Questions?



Linktree*

Use QR Code to connect with **US Army Garrison Rheinland-Pfalz** on all our social media sites!



WE ARE THE ARMY'S HOME



Welcome to USAG Rheinland-Pfalz

Closing Remarks

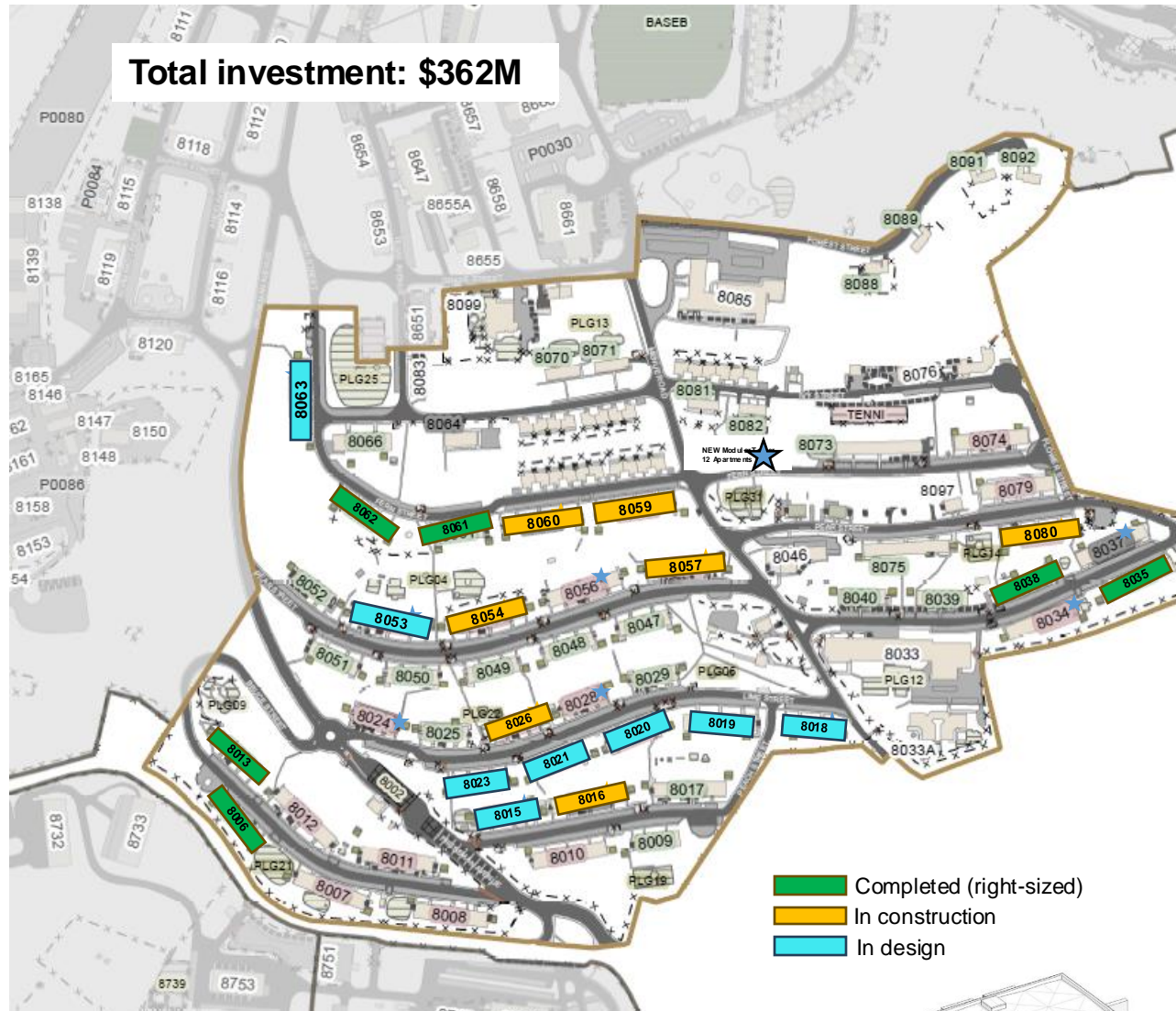


Back-up



WE ARE THE ARMY'S HOME





Currently rightsizing: (\$97M)

- 8057, Comp. 08/24
- 8059, Comp. 12/24
- 8060, Comp. 05/25
- 8054, Comp. 08/25
- 8016, Comp. 11/25
- 8026, Comp. 04/26
- 8080, Comp. 06/26

(160 to 108)

Future rightsizing:

- 8009, BAP+RAP
- 8017, BAP+RAP
- 8025, RAP
- 8029, RAP
- 8039, BAP+RAP
- 8040, BAP+RAP
- 8047, BAP+RAP
- 8048, BAP+RAP
- 8049, BAP+RAP
- 8050, BAP+RAP
- 8051, BAP+RAP
- 8052, BAP+RAP
- 8066, BAP+RAP
- 8070, future rs
- 8071, future rs
- 8073, RAP
- 8075, RAP

(TBD)

New Construction:

New Modular Tower with 12 Apartments and Garages
(0 to 12)

Planned for rightsizing: (\$254M)

- 8015, Comp. FY27
- 8018, Comp. FY27
- 8019, Comp. FY27
- 8020, Comp. FY27
- 8021, Comp. FY27
- 8023, Comp. FY27
- 8034, Comp. FY27
- 8037, Comp. FY27
- 8053, Comp. FY27
- 8063, Comp. FY27
- 8024, Comp. FY28
- 8028, Comp. FY28
- 8056, Comp. FY28
- 8079, Comp. FY30
- 8064, Comp. FY32
- 8074, Comp. FY32
- 8007, Comp. FY32
- 8008, Comp. FY32
- 8010, Comp. FY32
- 8011, Comp. FY32
- 8012, Comp. FY32

(424 to 260)

Rightsized:

- 8006, RAP
- 8013, RAP
- 8035, RAP
- 8038, RAP
- 8061, RAP
- 8062, RAP

(104 to 72)

RAP:

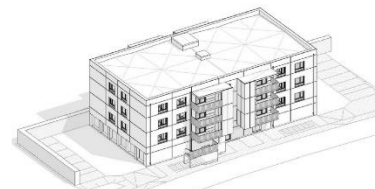
- 8081, 8082
- 8088, 8089, 8091, 8092

Anticipate rightsizing Balcony and Rolladen complete by FY32

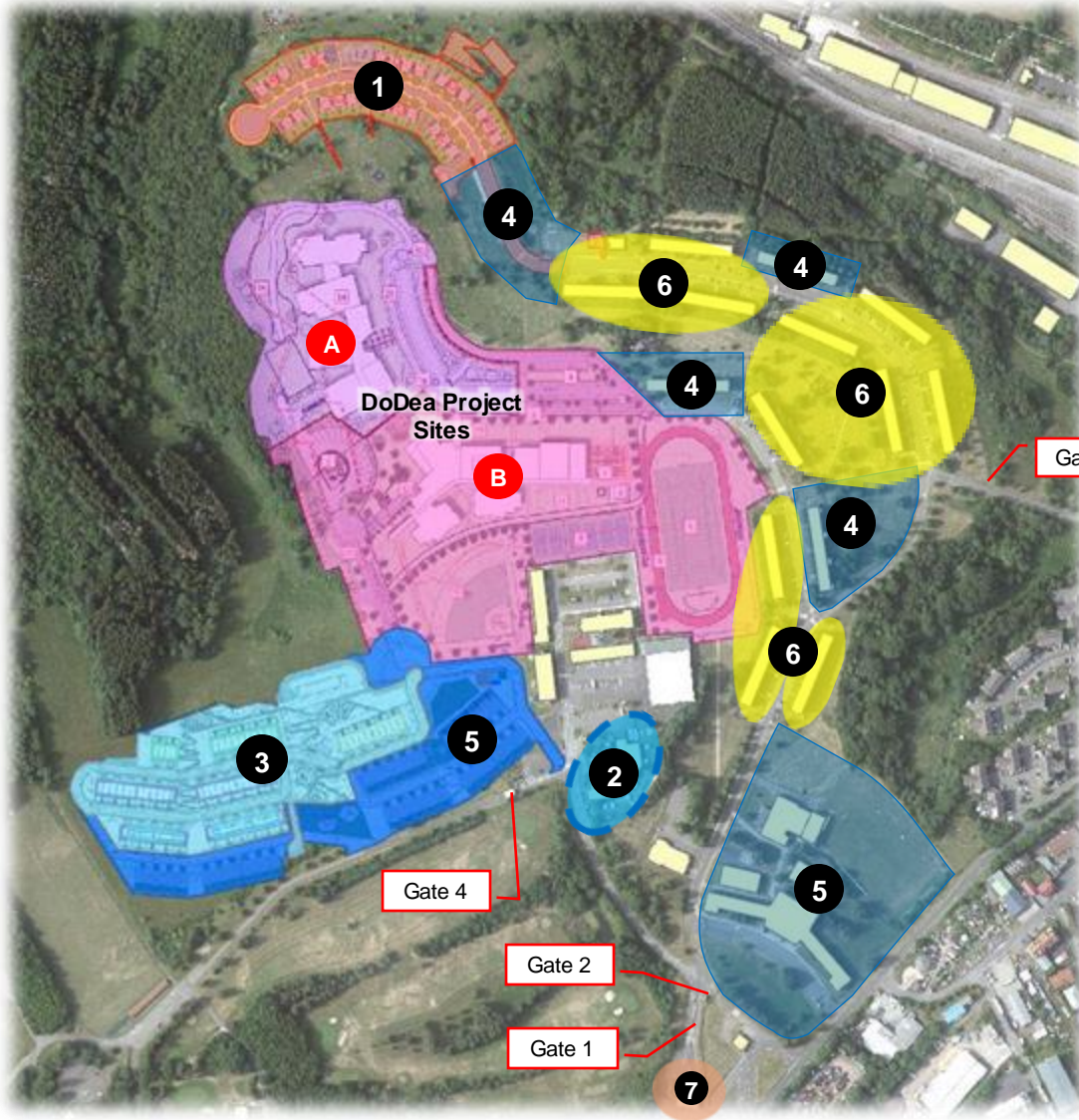
BAP: Balcony Addition Program (168 Balconies) (\$6.55M)

RAP: Rolladen Addition Program (2,694 Rolladen) (\$3.95M)

* Rightsizing Program includes addition of Balconies and Rolladen

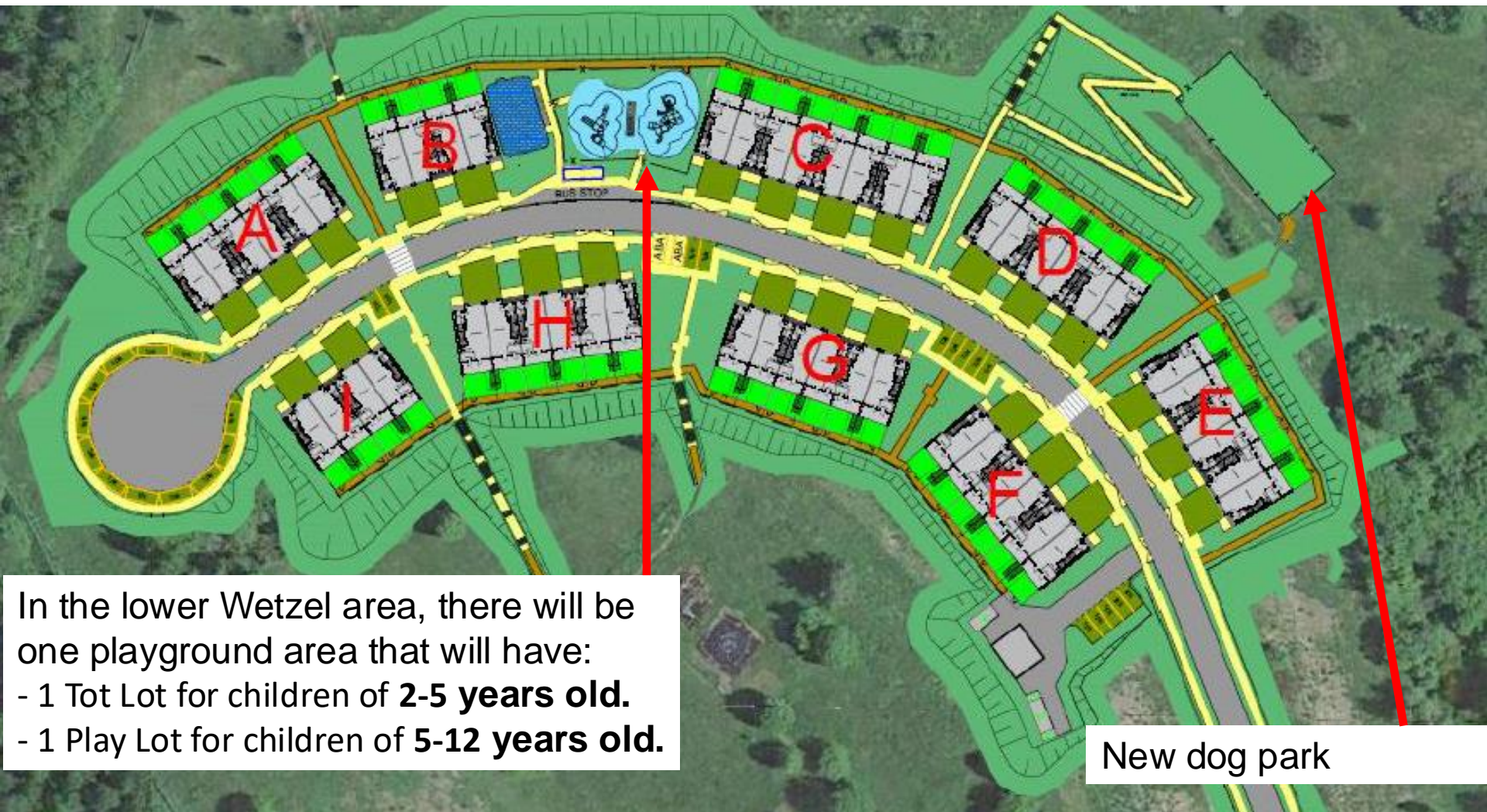


Construction on Wetzel Kaserne



- 1 FY23 (AFH Construction):**
 - 12 Apartments (Smith)
 - 52 Townhomes
 - Expected Completion Date: SEP 26
- 2 FY24 CDC Renovation**
 - Expected Completion Date: FY26
- 3 FY24 (AFH Construction) - Just Awarded!**
 - 70 Townhomes
 - Expected Completion Date: SEP 27
- 4 FY25 (AFH Construction)**
 - 54 Townhomes
 - OCT 25 – SEP 28 (est. Timeline)
- 5 Future Development Sites**
- 6 Future Demolition Sites**
- 7 Main ACP Lane Addition (Summer 2025)**
- A New DoDEA Elementary School**
 - Groundbreaking 29 May 2024
 - Expected Completion Date: FY29
- B New DoDEA Middle/High School**
 - Expected Completion Date: FY32





In the lower Wetzel area, there will be one playground area that will have:

- 1 Tot Lot for children of **2-5 years old**.
- 1 Play Lot for children of **5-12 years old**.

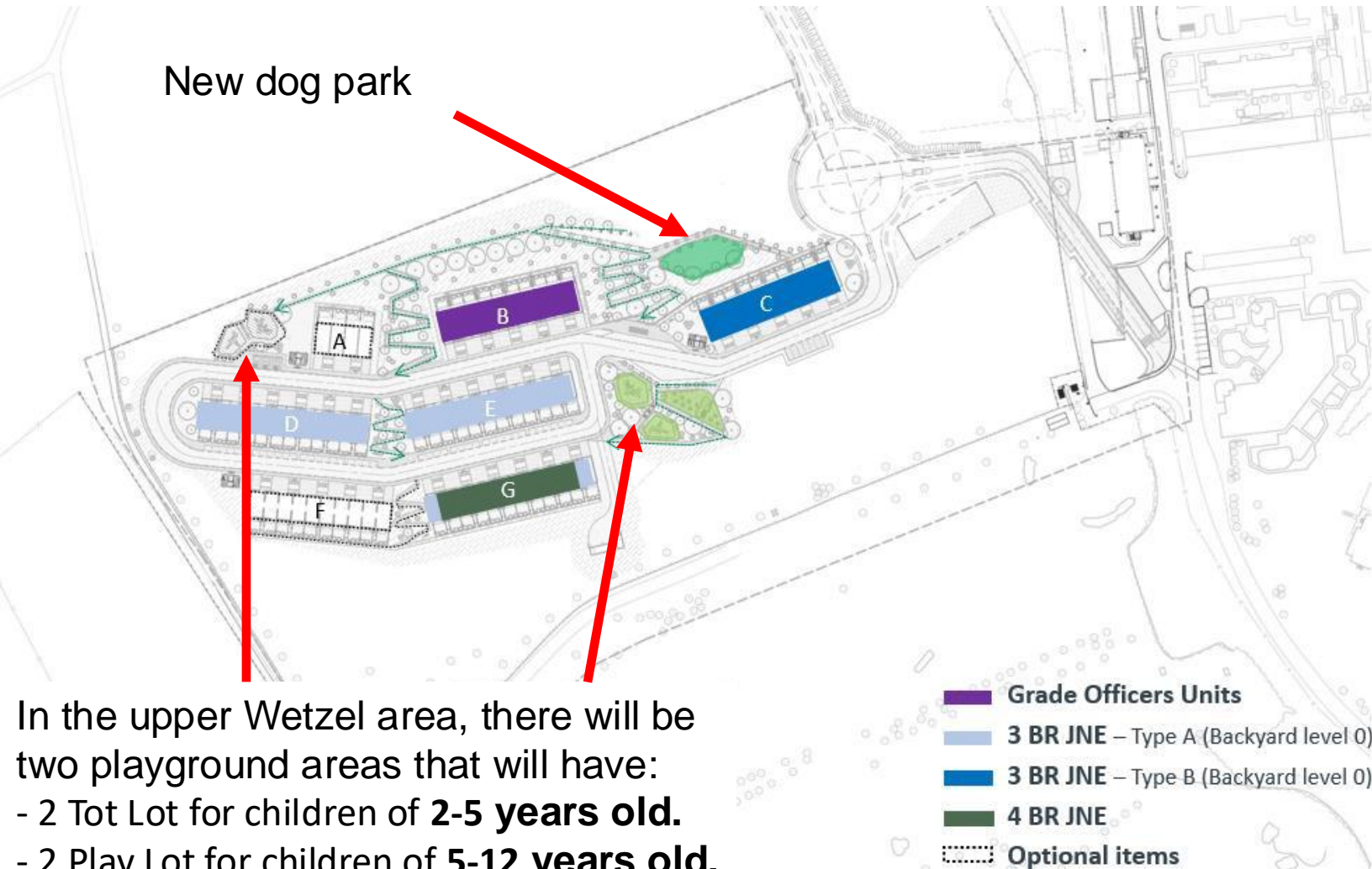
New dog park



WE ARE THE ARMY'S HOME



New dog park



In the upper Wetzel area, there will be two playground areas that will have:

- 2 Tot Lot for children of **2-5 years old**.
- 2 Play Lot for children of **5-12 years old**.



WE ARE THE ARMY'S HOME



Construction of 52 new Town houses on Wetzel
Completion Feb 2027
Total of 254 new Town houses planned on Wetzel
3 and 4 Bedrooms
Garage and balcony
Fenced in Backyard



Overview of On-Post Housing Policy Europe

REFERENCES: Army Europe Command Memorandum 2018-032, Military Family Housing Assignment Policy for mandatory housing assignments.

INTENT: Army in Europe Military Family Housing assignment policy is to maintain a balanced and fully functioning on-post cadre to support unit readiness, Soldier resiliency, and improve our ability to react to a crisis while taking care of those who face the greatest challenges with off-post housing in foreign locations – the Families of junior enlisted Soldiers.

POLICY:

- Reduce recall times supports our ability to respond to crisis.
- Soldiers who reside on-post have better access to quality-of-life (QOL) resources.
- Maximizing the number of direct assignments to on-post housing reduces the vacancy rates and turnover of housing.
- Minimizes the disruption to personnel and units caused by multiple moves from off-post to on-post housing.

United States Army garrison (USAG) commanders will:

- Mandatorily assign 100% of accompanied all grades of Soldiers on-post housing when occupancy is lower than 95%.
- If housing is projected to be unavailable within 60 days after a Soldier's arrival date, give the Soldier the option to accept a certificate of nonavailability (CNA) to seek off-post private-rental housing.
- If housing is projected to be unavailable until 90 days or later after the Soldier's arrival date, issue the Soldier a CNA.
- Assign all key and essential (K&E) personnel to on-post housing up to the limits of the available inventory.

This memorandum is available at <http://www.aepubs.eur.army.mil/>



Overview of Housing Policy Exceptions

Exception to The Policy (ETP)

Exception to Policy request can be processed for extenuating circumstances and/or certain hardship cases.

AUTHORITY: Authority to approve/disapprove requests for exceptions to housing policy will be in accordance with AR 420-1 (see Appendix A). All requests for exception to housing policy must be submitted thru chain of command, along with a signed concurrence statement from the Sponsor's unit commander.

PROCESS:

- (1) Applicant submits ETP with the Battalion, Company Commanders, and the Service member's signature with a recommendation for approval or disapproval, and any supporting documents for their request.
- (2) ETP is submitted to USAG Rheinland-Pfalz Housing Management Division for review and routing.
- (3) ETP is routed to Garrison Command Sergeant Major, and Deputy Garrison Commander for review and recommendations.
- (4) ETP is routed to GARRISON Commander for final approval or disapproval and returned to the Housing Management Division to notify the requestor.

Important: Once a **complete** Exception to Policy request including all supporting documentation has been received, our office will process your request. Please allow a 30-day turnaround time.



Welcome to Rheinland-Pfalz

AoR Key Installations and Sites

Baumholder

- CDC x2
- SAC
- Youth Services/Teen Center
- Youth Sports
- DoDEA EM; MS & HS
- Fire Station
- MP Station
- ACS
- Education Center
- Library
- Fitness Center
- Medical / Dental Clinics
- Family Housing / Army Lodging
- Soldier For Life; VA
- Transportation and Official Travel SATO offices
- Central Issue Facility
- POV Shipping, Inspection & Reg.
- VAT Office
- Legal Center SJA
- Community Club
- Chapel x2
- Post Office
- Community Bank
- Service Credit Union
- Commissary
- DFAC (x2)
- AAFES Exchange
- Gas Station/Shoppette
- AAFES Theater
- Food court
- Auto Skills Center
- Warrior Zone & BOSS
- Arts & Crafts Center
- Bowling Center
- Java Café
- Golf Course
- Indoor Swimming Pool
- Campgrounds

Ramstein Air Base

- CDC x2
- SAP x2
- Youth Center
- Education Center
- Fitness Center
- Medical Clinic
- Dental Clinic
- Library
- VAT Office
- Outdoor Rec.
- Auto Hobby and Car Wash
- Swimming Pool
- DoDEA Schools ES, MS, HS
- Commissary
- Gas Station
- Family Housing
- KMCC Main Exchange/ Lodging
- Fire Station (X3)

Landstuhl (USAFE)

Housing

- DoDEA ES/MS
- Fire Station
- Family Housing/ Lodging

Vogelweh

- CDC x2
- SAP
- SAS x2
- Youth Center
- Fitness Center
- Library
- DoDEA ES, MS, HS
- Commissary
- Family Housing/Lodging
- Community Center
- Community Clubs 2 (Army)
- Fire Station

Kapaun Air Station

- SAP
- Education Center
- Auto Skills
- POV Shipping, Inspection & Registration
- KMC LED (MP / SP)

Miesau Army Depot

- CDC
- Fire Station
- Education Center
- Fitness Center
- Chapel

Rhine Ordnance Barracks

- Fire Station (USAF)
- Fitness Center
- Education Center
- DFAC
- Java Café
- Shoppette/USO
- Kantine
- VAT Office
- Post Office



Pulaski Barracks

- Auto Skills and Car Wash
- Veterinary Services
- Outdoor Recreation
- Gas Station/Shoppette
- Pulaski Recreation Area

Kleber Kaserne

- ACS
- CDC
- Education Center
- Medical Clinic
- Dental Clinic
- Fitness Center
- Library
- VAT Office
- KMC Onstage
- DFAC
- Shoppette/Snack Bar
- Post Office
- Bank/Credit Union
- Fire Station (East)
- Java Café
- USO Office

Sembach Kaserne

- CDC
- SAC
- Youth / Teen Center
- Fitness Center
- DoDEA ES, MS
- Gas Station
- POV Inspection & Reg.
- Bank / Credit Union
- Food Court
- Warrior Zone
- Fire Station
- Post Office
- Community Club
- Java Café
- Kantine

Daenner Kaserne

- Community Activity Center
- Chapel

Panzer Kaserne

- Kantine / AAFES Snack Bar

Coleman Work Site

- Fire Station

Grünstadt Depot

- AAFES Bakery

Germersheim Army Depot

- Fire Station
- Kantine

Kaiserslautern Army Depot

- TLSC-E
- USAMMC-E
- Force Protection
- Fire and Emergency Response
- Law Enforcement
- DPW support

Wilson Barracks (Landstuhl Post – Army)

- CDC x2
- SAC
- Education Center
- Fitness Center
- Hospital (All KMC)
- Medical Clinic
- Army Ambulance for KMC
- Dental Clinic
- Library
- VAT Office
- Youth Services/Teen Center
- Community Club
- Chapel
- Post Office
- DFAC
- Gas Station / Shoppette
- Shoppette / Food court
- Auto Skills and Car Wash
- Java Café
- Youth Sports
- USO



WE ARE THE ARMY'S HOME



USO Baumholder



Location/Hours/Access

- Centralized on post across the street from the Hall of Champions Gym.
- Monday – Friday 1000-1800
- Sundays 1200-1800 for 18 and over only
- Everyone on base is welcome. Minors must be with a guardian 18 and over.

Programs

- Reoccurring Monthly Programs for Children, Spouses and Service Members.
- Monthly afterhours gaming or craft program for families.
- Delivery and Distribution Programs to our Service Members.
- Ability to request us to enhance unit or organization events.

Volunteering

- Opportunities for all adults including Service Members and Spouses.
- Unit Volunteer Opportunities.
- Minors 15-17 may volunteer without parental supervision.

Jake Speakman

Center Operations Manager
USO Baumholder | USO EMEA | Western Europe

USO Baumholder
Smith Barracks, Bldg 8106
Office: +49 (0) 611-143-531-3480
DSN: 531-3480
Cell: +49 (0) 172-811-8065
www.uso.org



WE ARE THE ARMY'S HOME





- **Full service ACS**

- 11 Programs
- 15 Staff members (9 full time, 6 rotating, 2 position currently vacant)
- 8 Contractors (3 positions currently vacant)
- Computer lab
- Free customer Wi-Fi

- **Relocation Services:**

- Lending Closet
- German Language Classes
- Host Nation Orientation & Tours (Newcomer's Orientation)
- Information on military and community resources
- Information on local transportation systems
- Tourist information and events
- Explanation and advocacy for German contracts
- Assistance with termination process
- Unofficial translation of German bills, traffic citations and other correspondence (Certified translation services are available for free through Military OneSource)
- English as a Second Language (ESL) Classes
- Multicultural Lunch Social



MISSION:

The USAG-RP Safety Organization systematically delivers services and support to complete mission tasks.

VISION:

A trusted team of multifaceted Safety Professionals entrusted to empower our community partners to establish safety as a cornerstone of daily living.

SERVICES:

1. Motorcycle Safety (BRC and ARC)
2. Vehicle Safety (IDT, RDT, and Winter Drivers)
3. Explosives Site Licensing
4. FCC Home Inspections
5. Event Walkthroughs
6. Consulting
7. Risk Assessment Reviews

EMAIL:

- GSO Email- usarmy.rheinland-pfalz.id-europe.mbx.garrison-safety-office@army.mil

MISSION:

Rhine Ordnance Barracks Bldg. 162

Hours: 0700 – 1730

Richard Cruikshank	Safety Director	541-2300
--------------------	-----------------	----------

Bldg. 8698, Smith Barracks BMC

Hours: 0700-1530

Mr. Christopher N. Alden	BMC Safety Manager	531-2752
Mr. Pascal Correc	LN Safety Specialist	531-2753

PUBLIC ACCESS REPORTING PROCESS:

Does the event involve unsafe equipment or maintenance issue?
If yes proceed to step 1.
If no, proceed to step 2.

STEP 1: <https://www.armymaintenance.com/arma>
STEP 1a: Write down your service request #



STEP 2: <https://forms.osi.apps.mil/r/gpi40u6W2N>



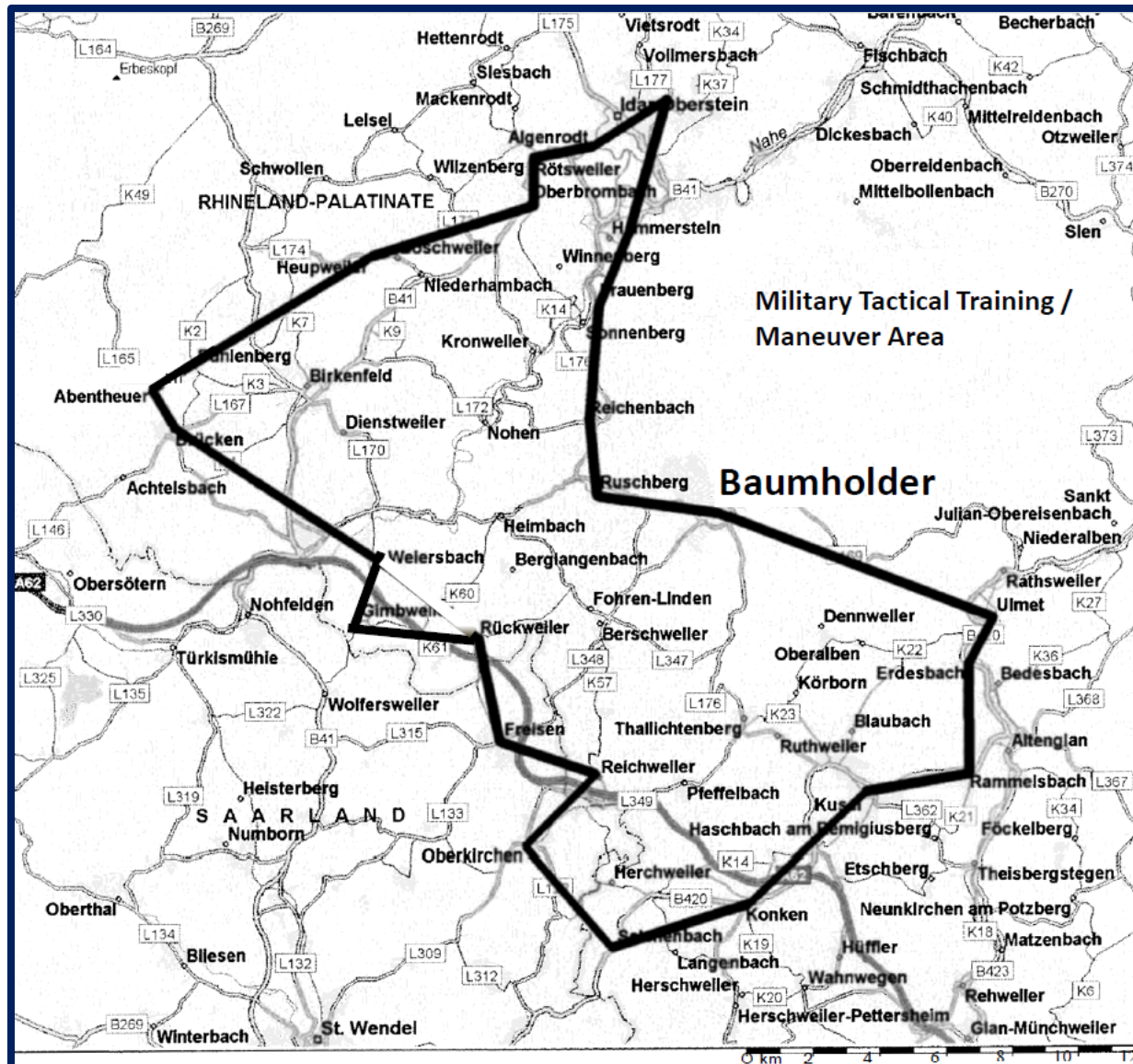
GSO will follow-up on all reported events and if a service request # was provided we will track it.



WE ARE THE ARMY'S HOME



Baumholder Commuting Zone



BAUMHOLDER SCHOOL BUS COMMUTING ZONE
DoDEA EUROPE EAST - BAUMHOLDER MILITARY COMMUNITY
Effective 31 October 2018

School bus transportation will be provided from the villages annotated below. If your village / town is not specifically identified in the list below, please contact the Baumholder SBO.

Abentheuer
 Albessen
 Baumholder
 Bedesbach
 Berglangenbach
 Birkenfeld
 Brücken
 (Birkenfeld)
 Berschweiler
 Bledesbach
 Breitsesterhof
 Dienstweiler
 Eckersweiler
 Ehweiler
 Eitzweiler
 Erdesbach
 Föhren-Linden
 Freisen Frauenberg
 Gimbweiler
 Hahnweiler
 Hammerstein
 Heimbach
 Hoppstaedten
 Idar-Oberstein
 Konken
 Korbörn

Kusel
 Mettweiler
 Nlederalben
 Niederhambach-Boeschweiler
 Niederhambach-Burbach
 Niederhambach-Heupweiler
 Oberbrombach
 Oberkirchen
 Patersbach
 Pfeffelbach
 Rammelsbach
 Rathsweller
 Reichweiler
 Reitscheid
 Rohrbach
 Rueckweiler
 Reichenbach
 Ruschberg
 Ruthweiler (Kusel)
 Sankt Jullan
 Schwarzerden
 Selchenbach
 Sonnenberg - Winnenberg
 Thallichtenbergl
 Ulmet
 Weiersbach



AMERICA'S ARMY:
ARMY MEDICINE IS ARMY STRONG!

Baumholder Army Health Clinic

BAHC Contact Information



Maxwell H. Smith
LTC, MS
Commander
Baumholder Army Health Clinic

maxwell.h.smith3.mil@health.mil
Office: 314-590-1185
Mobile: 0162-0251-7921

Kaleb W. Richardson
Detachment Sergeant
Baumholder Army Health Clinic

kaleb.w.richardson.mil@health.mil
Office: 314-590-4130
Mobile: 0152-0904-1508