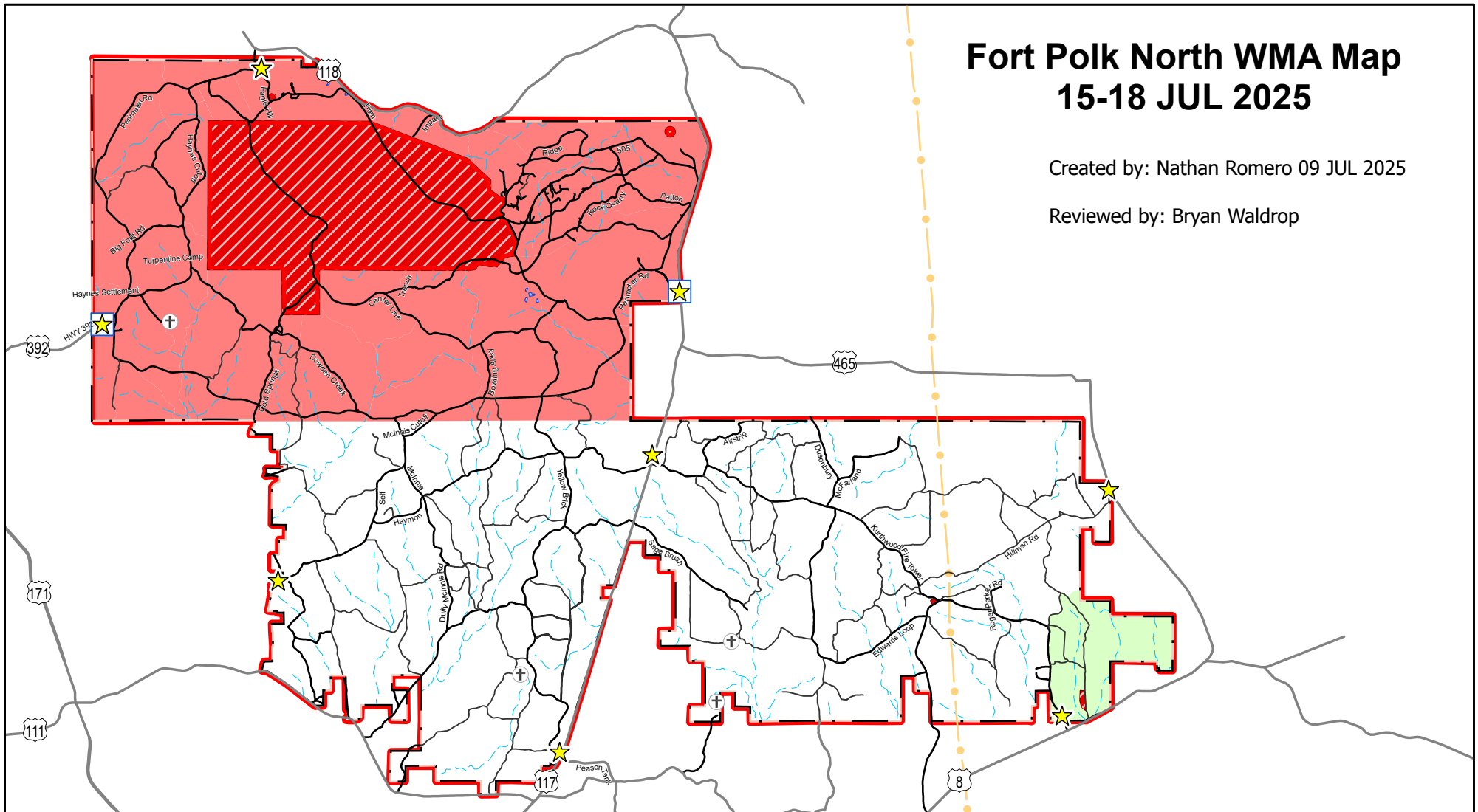


Fort Polk North WMA Map

15-18 JUL 2025

Created by: Nathan Romero 09 JUL 2025

Reviewed by: Bryan Waldrop



★ Hunter Self Clearing

★ Self and Either Sex Clearing

⊕ Cemetery: NO HUNTING

▲ Camping Area

— Pipeline

--- Streams

Water Body

Fort Polk/USFS Boundary

WMA Boundary

DANGER! NO HUNTING, NO ACCESS

Closed for All WMA Activities

Open for All WMA Activities

No Gun Hunting - Archery - Either Sex

Bow, Shotgun, and Muzzle Loader For Deer, Small Game and Turkey

Archery for Deer, Shotgun Only for Small Game and Turkey (No. 2 Shot or smaller)

Hunting by reservation only for wheelchair confined Physically Challenged Hunter Permit (PCHP) in designated area

Post Game Warden Office: 337-531-5222

Report Wildlife Violations:
Louisiana Operations Game Thief 1-800-442-2511

All manmade structures (ie. Radio Towers, Running Trails, Buildings, etc) are off limits to all visitors

Map does not supersede State or Installation Regulations

Vehicles must remain on roads and trails shown on map



0 0.5 1 2 3 4 5 6 Miles