



ORGANIZATION

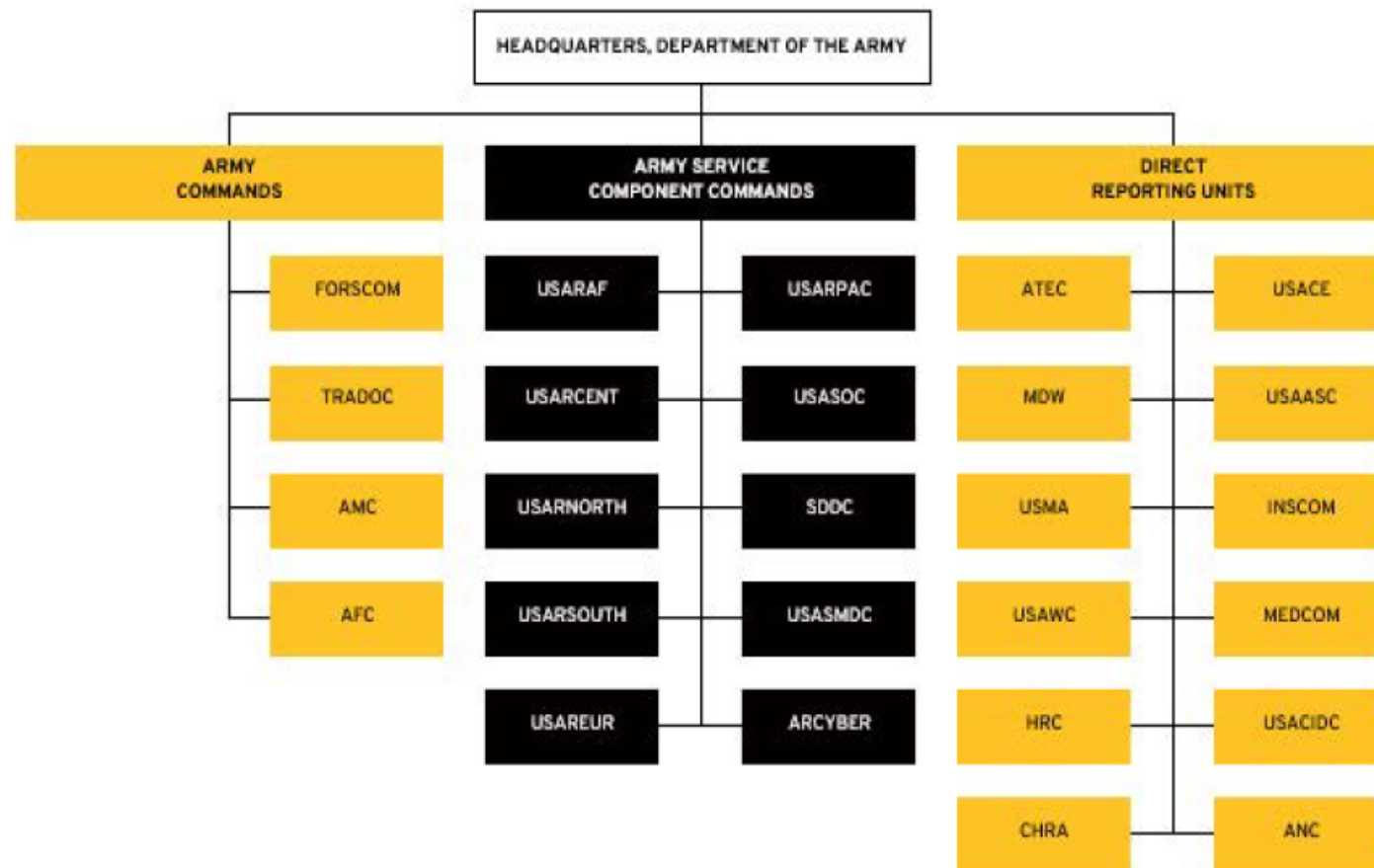
The Army, as one of the three military departments (Army, [Navy \[http://www.navy.mil\]](http://www.navy.mil) and [Air Force \[http://www.af.mil\]](http://www.af.mil)) reporting to the [Department of Defense \[http://www.dod.mil\]](http://www.dod.mil), is composed of two distinct and equally important components: the active component and the reserve components. The reserve components are the [United States Army Reserve \[http://www.usar.army.mil/\]](http://www.usar.army.mil/) and the [Army National Guard. \[https://www.army.mil/news/nationalguard/\]](https://www.army.mil/news/nationalguard/)

Regardless of component, the Army conducts both operational and institutional missions. The operational Army consists of numbered armies, corps, divisions, brigades, and battalions that conduct full spectrum operations around the world. The institutional Army supports the operational Army. Institutional organizations provide the infrastructure necessary to raise, train, equip, deploy, and ensure the readiness of all Army forces. The training base provides military skills and professional education to every Soldier—as well

as members of sister services and allied forces. It also allows the Army to expand rapidly in time of war. The industrial base provides world-class equipment and logistics for the Army. Army installations provide the power-projection platforms required to deploy land forces promptly to support combatant commanders. Once those forces are deployed, the institutional Army provides the logistics needed to support them.

Without the institutional Army, the operational Army cannot function. Without the operational Army, the institutional Army has no purpose.

ARMY COMMAND STRUCTURE



ARMY COMMANDS (ACOM):



[<https://www.army.mil/forscom/?from=org>]

U.S. ARMY FORCES COMMAND (FORSCOM) [[HTTPS://WWW.ARMY.MIL/FORSCOM/?FROM=ORG](https://www.army.mil/forscom/?from=org)] | FORT BRAGG, NORTH CAROLINA

FORSCOM trains, mobilizes, deploys, sustains, transforms, and reconstitutes assigned conventional forces, providing relevant and ready land power to combatant commanders.



[<https://www.tradoc.army.mil/>]

U.S. ARMY TRAINING AND DOCTRINE COMMAND (TRADOC)
[[HTTPS://WWW.TRADOC.ARMY.MIL/](https://www.tradoc.army.mil/)] | FORT EUSTIS, VIRGINIA

TRADOC recruits, trains, and educates the Army's Soldiers; develops leaders; supports training in units; develops doctrine; establishes standards; and builds the future Army.



[<https://www.army.mil/amc/?from=org>]

U.S. ARMY MATERIEL COMMAND (AMC) [[HTTPS://WWW.ARMY.MIL/AMC/?FROM=ORG](https://www.army.mil/amc/?from=org)]
REDSTONE ARSENAL, ALABAMA

AMC provides superior technology, acquisition support and logistics to ensure dominant land force capability for Soldiers, the United States, and our Allies.



[<https://www.army.mil/futures/?from=org>]

U.S. ARMY FUTURES COMMAND (AFC) [[HTTPS://WWW.ARMY.MIL/FUTURES/?FROM=ORG](https://www.army.mil/futures/?from=org)] | AUSTIN, TEXAS

AFC will modernize the Army for the future; integrate the future operational environment, develop and deliver future force requirements, design future force organizations and deliver materiel capabilities.

ARMY SERVICE COMPONENT COMMANDS (ASCC):



[<http://www.usaraf.army.mil/>]

U.S. ARMY AFRICA (USARAF) [[HTTP://WWW.USARAF.ARMY.MIL/](http://www.usaraf.army.mil/)] | VICENZA, ITALY

USARAF/SETAF provides mission command and employs forces to set the theater, conduct security force assistance, and provide support to joint and international partners in order to achieve USAFRICOM Theater Campaign Plan objectives.



[<https://www.usarcent.army.mil/>]

U.S. ARMY CENTRAL (USARCENT) [[HTTPS://WWW.USARCENT.ARMY.MIL/](https://www.usarcent.army.mil/)] | SHAW AIR FORCE BASE, SOUTH CAROLINA

USARCENT is the assigned Army Service Component Command (ASCC) to the United States Central Command (USCENTCOM) and provides continuous oversight and control of Army operations throughout the USCENTCOM Area of Responsibility (AOR).



[<http://www.arnorth.army.mil/>]

U.S. ARMY NORTH (USARNORTH) [[HTTP://WWW.ARNORTH.ARMY.MIL/](http://www.arnorth.army.mil/)] | FORT SAM HOUSTON, TEXAS

USARNORTH is the assigned Army Service Component Command (ASCC) to the United States Northern Command (USNORTHCOM) and provides continuous oversight and control of Army operations throughout the USNORTHCOM Area of Responsibility (AOR).



[<https://www.army.mil/arsouth>]

U.S. ARMY SOUTH (USARSOUTH) [[HTTPS://WWW.ARMY.MIL/ARSOUTH](https://www.army.mil/arsouth)] | FORT SAM
HOUSTON, TEXAS

USARSOUTH is the assigned Army Service Component Command (ASCC) to the United States Southern Command (USSOUTHCOM) and provides continuous oversight and control of Army operations throughout the USSOUTHCOM Area of Responsibility (AOR).



[<http://www.eur.army.mil/>]

U.S. ARMY EUROPE (USAREUR) [[HTTP://WWW.EUR.ARMY.MIL/](http://www.eur.army.mil/)] | WIESBADEN, GERMANY

USAREUR is the Army Service Component Command (ASCC) assigned to the United States European Command (USEUCOM) and provides continuous oversight and control of Army operations throughout the EUCOM Area of Responsibility (AOR).



[<https://www.army.mil/usarpac/?from=org>]

U.S. ARMY PACIFIC (USARPAC) [[HTTPS://WWW.ARMY.MIL/USARPAC/?FROM=ORG](https://www.army.mil/usarpac/?from=org)]

FORT SHAFTER, HAWAII

USARPAC is the assigned Army Service Component Command (ASCC) to the United States Pacific Command USPACOM and provides continuous oversight and control of army operations throughout the USPACOM Area of Responsibility (AOR) less the Korean Peninsula.



[<https://www.army.mil/usasoc/?from=org>]

U.S. ARMY SPECIAL OPERATIONS COMMAND (USASOC)

[[HTTPS://WWW.ARMY.MIL/USASOC/?FROM=ORG](https://www.army.mil/usasoc/?from=org)] | FORT BRAGG, NORTH CAROLINA

USASOC is the assigned Army Service Component Command (ASCC) to the United States Special Operations Command (USSOCOM).



[<https://www.sddc.army.mil/Pages/default.aspx>]

MILITARY SURFACE DEPLOYMENT AND DISTRIBUTION COMMAND (SDDC)

[[HTTPS://WWW.SDDC.ARMY.MIL/PAGES/DEFAULT.ASPX](https://www.sddc.army.mil/Pages/default.aspx)] | SCOTT AIR FORCE BASE, ILLINOIS

SDDC is the assigned Army Service Component Command (ASCC) to the United States Transportation Command (USTRANSCOM) and a Major Subordinate Command (MSC) to U.S. Army Materiel Command (AMC).



[<https://www.army.mil/smdc/?from=org>]

U.S. ARMY SPACE AND MISSILE DEFENSE COMMAND (USASMDC)

[[HTTPS://WWW.ARMY.MIL/SMDC/?FROM=ORG](https://www.army.mil/smdc/?from=org)] | HUNTSVILLE, ALABAMA

USASMDC is the assigned Army Service Component Command (ASCC) to the United States Strategic Command (USSTRATCOM) and provides continuous oversight, control, integration, and coordination of Army forces supporting USSTRATCOM.



[<https://www.army.mil/armycyber/?from=org>]

U.S. ARMY CYBER COMMAND (USARCYBER) [[HTTPS://WWW.ARMY.MIL/ARMYCYBER/?FROM=ORG](https://www.army.mil/armycyber/?from=org)] | FORT GORDON, GEORGIA

United States Army Cyber Command is an operational level Army force, with ARCYBER designated by the Secretary of the Army as an Army Service Component Command to U.S. Cyber Command (USCYBERCOM). Army Cyber Command directs and conducts integrated electronic warfare, cyberspace and information operations as authorized, or directed, to ensure freedom of action in and through cyberspace and the information environment, and to deny the same to our adversaries.

DIRECT REPORTING UNITS (DRU):



[<https://www.army.mil/armymedicine/?from=org>]

U.S. ARMY MEDICAL COMMAND (MEDCOM) [[HTTPS://WWW.ARMY.MIL/ARMYMEDICINE/?FROM=ORG](https://www.army.mil/armymedicine/?from=org)] | FORT SAM HOUSTON, TEXAS

MEDCOM is designated as a Direct Reporting Unit (DRU) by the Secretary of the Army. The MEDCOM provides medical, dental, and veterinary capabilities to the Army and designated DoD activities; operates fixed facilities; conducts medical research, materiel development and acquisition; educates and trains personnel; and develops medical concepts, doctrine, and systems to support Army healthcare delivery.



[<https://www.army.mil/inscom/?from=org>]

U.S. ARMY INTELLIGENCE AND SECURITY COMMAND (INSCOM) [[HTTPS://WWW.ARMY.MIL/INSCOM/?FROM=ORG](https://www.army.mil/inscom/?from=org)] | FORT BELVOIR, VIRGINIA

INSCOM is designated by the Secretary of the Army as a Direct Reporting Unit (DRU) and reports directly to the Army DCS, G-2. The INSCOM synchronizes the operations of all INSCOM units to produce intelligence in support of the Army, Combatant Commands, and the National intelligence community.



[<http://www.cid.army.mil/>]

U.S. ARMY CRIMINAL INVESTIGATION COMMAND (USACIDC)

[[HTTP://WWW.CID.ARMY.MIL/](http://www.cid.army.mil/)] | QUANTICO, VIRGINIA

USACIDC is designated as a Direct Reporting Unit (DRU) by the Secretary of the Army. The USACIDC conducts sensitive or special interest investigations as directed by the Secretary of the Army or the Chief of Staff of the Army; plans for and provides personal security (protective services) for DoD and Department of the Army officials as designated by the Secretary of the Army or the Chief of Staff of the Army; provides criminal investigative support to all Army elements including forensic support; maintains overall responsibility for Army investigations of controlled substances; conducts and controls all Army investigations of serious crimes, less serious crimes, upon request, or as necessary for effective Army law enforcement, and fraud; and other crimes arising in Army procurement activities.



[<http://www.hrc.army.mil/>]

U.S. ARMY HUMAN RESOURCES COMMAND (HRC) [[HTTP://WWW.HRC.ARMY.MIL/](http://www.hrc.army.mil/)] |

FORT KNOX, KENTUCKY

The U.S. Army Human Resources Command executes distribution, strategic talent management, personnel programs and services Army wide in order to optimize Total Force personnel readiness and strengthen an agile and adaptive Army.



[<https://www.army.mil/usace/?from=org>]

U.S. ARMY CORPS OF ENGINEERS (USACE) [[HTTPS://WWW.ARMY.MIL/USACE/?](https://www.army.mil/usace/?from=org)

FROM=ORG] | WASHINGTON, D.C.

USACE is designated as a Direct Reporting Unit (DRU) by the Secretary of the Army. The USACE provides engineering services and capabilities in support of National interests.



[<https://www.army.mil/mdw/?from=org>]

U.S. ARMY MILITARY DISTRICT OF WASHINGTON (MDW) [[HTTPS://WWW.ARMY.MIL/MDW/?FROM=ORG](https://www.army.mil/mdw/?from=org)] | FORT MCNAIR, WASHINGTON, D.C.

MDW is designated as a Direct Reporting Unit (DRU) by the Secretary of the Army and reports directly to the Chief of Staff of the Army. The MDW is a geographic command with responsibilities that extend throughout the U.S. National Capitol Region (NCR) – Washington, D.C. metropolitan area.



[<https://www.army.mil/atec/?from=org>]

U.S. ARMY TEST AND EVALUATION COMMAND (ATEC) [[HTTPS://WWW.ARMY.MIL/ATEC/?FROM=ORG](https://www.army.mil/atec/?from=org)] | ABERDEEN PROVING GROUND, MARYLAND

ATEC is designated as a Direct Reporting Unit (DRU) by the Secretary of the Army and reports directly to the Chief of Staff of the Army. The ATEC plans, integrates, and conducts: experiments, developmental testing, independent operational testing, and independent evaluations and assessments to provide essential information to acquisition decision makers and Commanders.



[<https://www.army.mil/westpoint/?from=org>]

U.S. MILITARY ACADEMY (USMA) [[HTTPS://WWW.ARMY.MIL/WESTPOINT/?FROM=ORG](https://www.army.mil/westpoint/?from=org)] | WEST POINT, NEW YORK

USMA is designated as a Direct Report Unit (DRU) by the Secretary of the Army and reports directly to the Chief of Staff of the Army. The mission of the USMA is to educate, train, and inspire the Corps of Cadets so that each graduate is a commissioned leader of character committed to the values of Duty, Honor, Country and prepared for a career of professional excellence and service to the Nation as an officer in the United States Army.



[<https://asc.army.mil/web/>]

U.S. ARMY ACQUISITION SUPPORT CENTER (USAASC)

[[HTTPS://ASC.ARMY.MIL/WEB/](https://asc.army.mil/web/)] | FORT BELVOIR, VIRGINIA

USAASC is designated as a Direct Reporting Unit (DRU) by the Secretary of the Army and reports directly to the ASA (ALT). The USAASC supports the readiness of the Army by continually improving the Army's capability through all stages of materiel development, developing a professional acquisition workforce and supporting the acquisition community at all levels.



[<http://www.carlisle.army.mil/>]

U.S. ARMY WAR COLLEGE [[HTTP://WWW.CARLISLE.ARMY.MIL/](http://www.carlisle.army.mil/)] | CARLISLE, PENNSYLVANIA

The purpose of U.S. Army War College at this time in our Nation's history is to produce graduates from all our courses who are skilled critical thinkers and complex problem solvers in the global application of Landpower. The goal is to provide high quality Professional Military Education, aggressively Conduct Research, Publish, Engage in Discourse, and Wargame with the entire faculty, staff, students and fellows, conduct strategic leader development, and attract, recruit, and retain a high quality faculty and staff.



[<http://www.arlingtoncemetery.mil/>]

ARLINGTON NATIONAL CEMETERY [[HTTP://WWW.ARLINGTONCEMETERY.MIL/](http://www.arlingtoncemetery.mil/)]

ARLINGTON, VIRGINIA

On behalf of the American people, Arlington National Cemetery lays to rest those who have served our nation with dignity and honor, treating their families with respect and compassion, and connecting guests to the rich tapestry of the cemetery's living history, while maintaining these hallowed grounds befitting the sacrifice of all those who rest here in quiet repose.



[https://portal.chra.army.mil/hr_public/?id=chra_pub]

CIVILIAN HUMAN RESOURCES AGENCY [[HTTPS://PORTAL.CHRA.ARMY.MIL/HR_PUBLIC/?](https://portal.chra.army.mil/hr_public/?id=chra_pub)

ID=CHRA_PUB] | ABERDEEN PROVING GROUND, MARYLAND

CHRA provides comprehensive human resources services for the Army. As a DRU under the Department of the Army G-1, CHRA is part of the Army's initiative to mold human resources functions into a corporate structure, enabling efficient and effective human resources support worldwide.