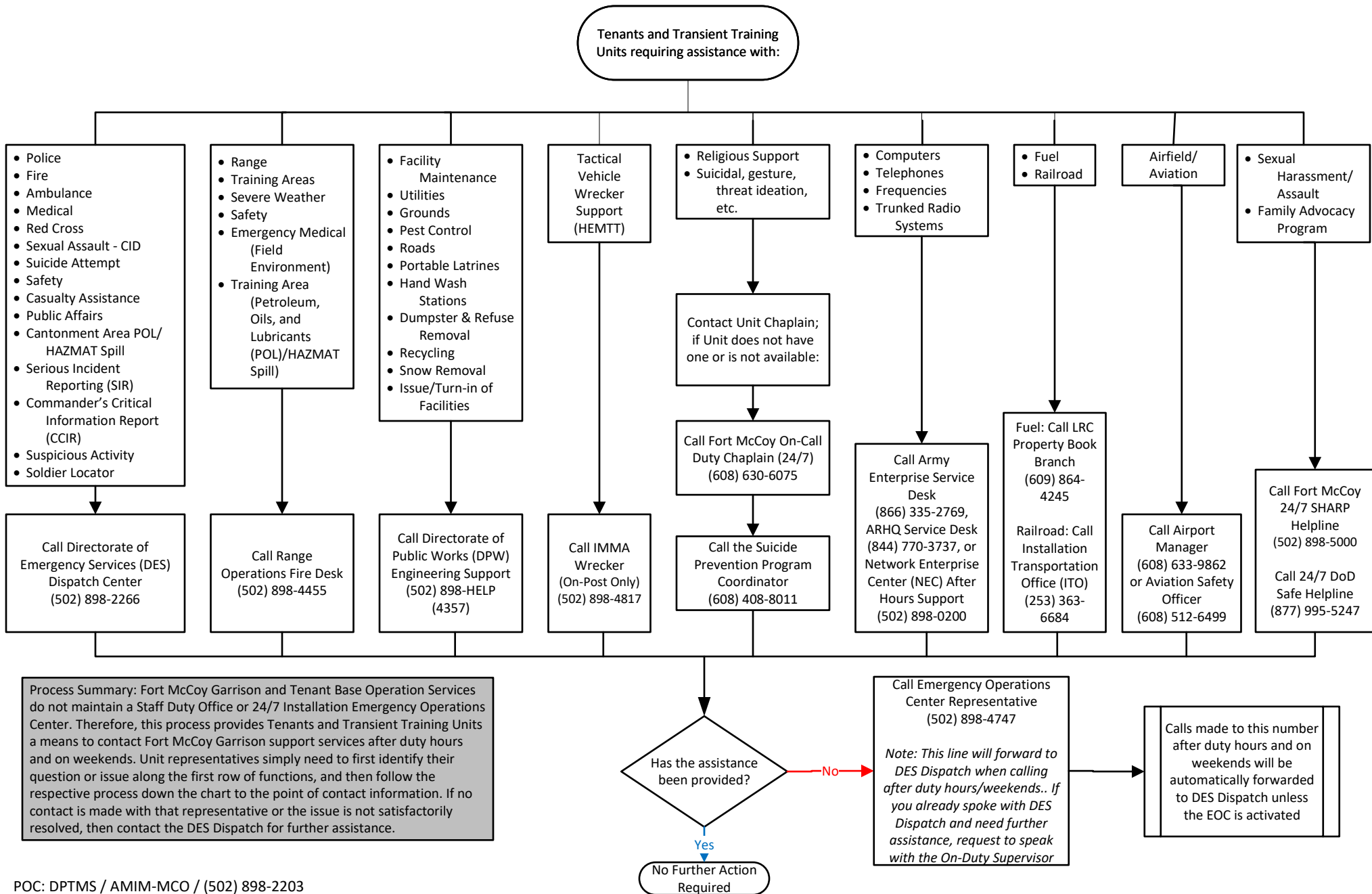
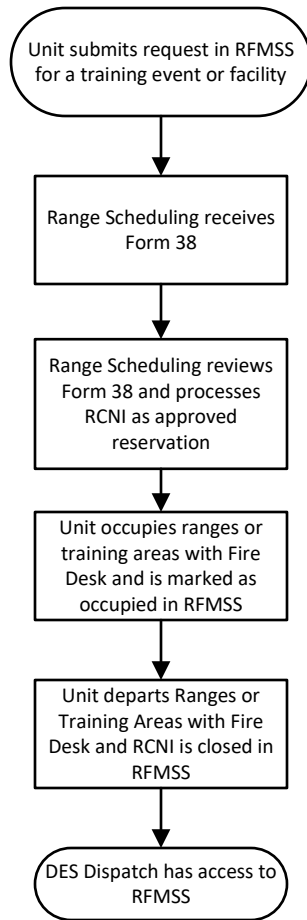


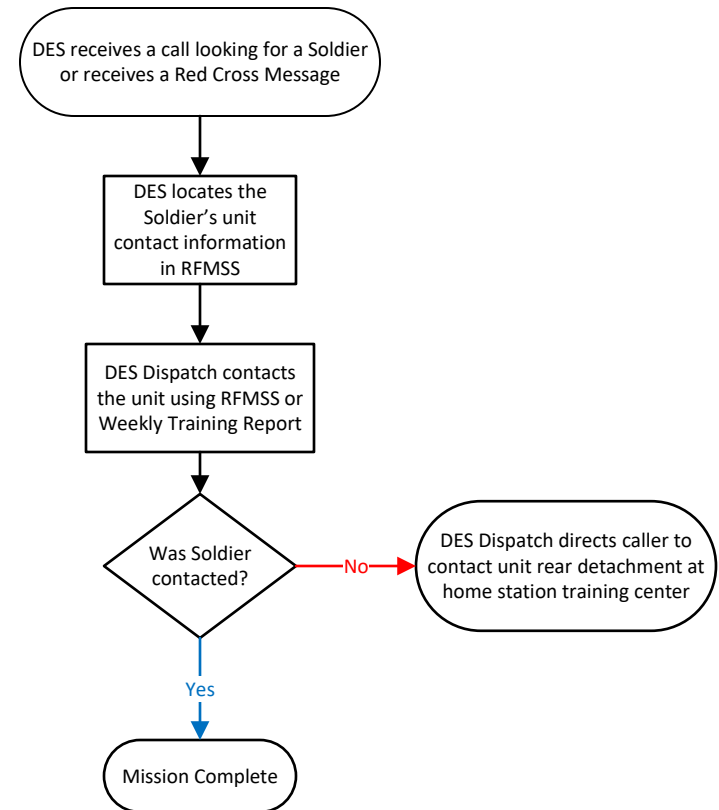
Fort McCoy After Duty Hours/Weekend Contact Information Process



TRAINING UNIT MANAGEMENT PROCESS



SOLDIER LOCATER PROCESS



Process Summary: This two-part process demonstrates how Fort McCoy will manage the Soldier Locator Process. Part one, the Training Unit Management Process outlines how DPTMS Range Scheduling will receive each training unit's Form 38 and provides updated reports module in RFMSS. Part two, upon receipt of a phone call trying to locate a service member either from Red Cross or a family member, DES will access RFMSS for updated reports module or weekly training bulletin to try and locate that Soldier. If the Soldier is not found on any of those documents, then the caller will be directed to make contact with unit rear detachment personnel at their home-station training center.