



U.S. ARMY



U.S.A.F.



JBLM Environmental Awareness Training

Version 1
As of 22 February 2021

Sustainability Program
Joint Base Lewis-McChord



Introduction



- Environmental stewardship is the **responsibility of all** whose actions affect the environment, from clean air and water, to resource availability, and chemical exposure. The JBLM Community includes:
 - Service Members and their families
 - Military Organizations (Active, Reserve, and National Guard)
 - JBLM Directorates and Support Activities
 - Other government, commercial, and private organization
 - Contractors in all categories
 - Vendors
 - Retirees and others using JBLM
 - Surrounding communities





Introduction



As a member of the JBLM community you must:

Know how you impact the environment both on and off the job

Know and adhere to the environmental requirements of your job – including applicable laws, regulations and policies

Adhere to proper procedures for training, operations, recordkeeping and corrective actions

Know the potential environmental impacts of departing from these procedures

Know your organization's appointed Environmental Officer





Environmental Impacts



- People may think, **“I don’t do anything that has an environmental impact.”**
However, even routine administrative actions can have a significant impact when multiplied across the installation. For example:
 - Keyboard Dusters: Just one can of aerosol keyboard duster can emit the same greenhouse pollution as driving a car from Seattle to New York City and back to Chicago. Personnel can therefore significantly reduce pollution by decreasing or ending the use of such products
 - Printing: Excess printing puts pressure on current paper supplies, creating a market demand for cutting down remaining forest habitat. Although paper is recycled on JBLM, duplex (two-sided) printing reduces the amount of paper used, which allows the current paper supply to stretch farther
 - Organizations on DoD facilities are required to identify and track their significant environmental impacts and continually work to improve them





Additional Impacts



- **Non-compliance with environmental laws can result in individual and organizational fines and prosecution**
- Efficient resource use reduces pollution AND saves money
- For example, the average DAILY electric bill for JBLM is over **\$25,000**, the average heating bill is over **\$32,000**, and the MONTHLY trash bill is over **\$375,000**. These costs can be lowered by changes in action, procurement, and design
- Turning off unnecessary energy and water use while also diverting materials from landfills lowers operational costs, uses money more efficiently, and provides funding for key installation programs





JBLM Environmental Program



- JBLM's Environmental Program operates on both a long-term strategic level (sustainability) and a shorter-term operational level (environmental management)

Sustainability Program

- Establishes 20 to 25 year goals
- Integrated and interdisciplinary focus
- Systems approach

Environmental Management System (EMS)

- Establishes annual objectives and targets
- Focused on environmental subject areas
- Ground-level planning, implementation, and verification

- JBLM also issues Environmental Operating Permits to certain organizations in an effort to ensure conformance with the Environmental Management System and Sustainability Program





- JBLM's environmental planning and initiatives are given focus and direction through the concept of Sustainability
- JBLM's Sustainability Program establishes long-term strategic goals for environmental performance, community planning, and quality of life
- These goals are available at JBLM Environmental Division Website:





What is Sustainability?



The ability to simultaneously meet current as well as future mission requirements worldwide, safeguard human health, improve quality of life, and enhance the natural environment.

KEY POINTS



Utilizes an integrated systems approach focused on mission, environment, community, and economy

Works to achieve long term goals

Solution oriented

Sustainability Program Information website:





What is the Environmental Management System (EMS)?



A Structured, Systematic, and Documented Approach to:

- **Plan, implement, and integrate installation sustainability**
- **Emphasize**
 - environmental stewardship
 - compliance
 - pollution prevention programs
 - continual improvement
- **Should harmonize with existing management systems**

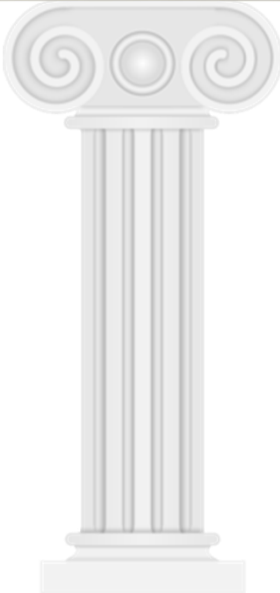




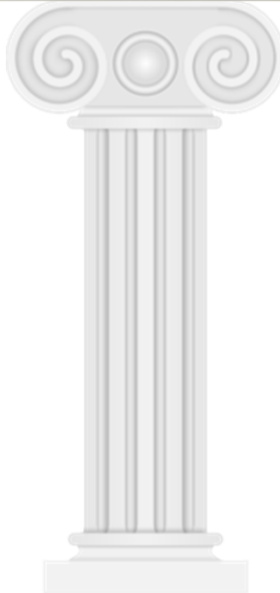
What is the Environmental Management System (EMS)?



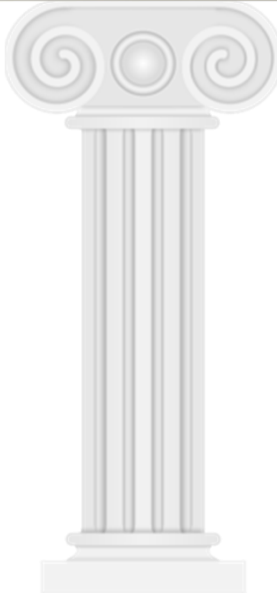
JBLM's Environmental Management System consists of 17 separate components spread out over 5 pillars. It is not a rigid structure, but rather designed to allow for continuous improvement.



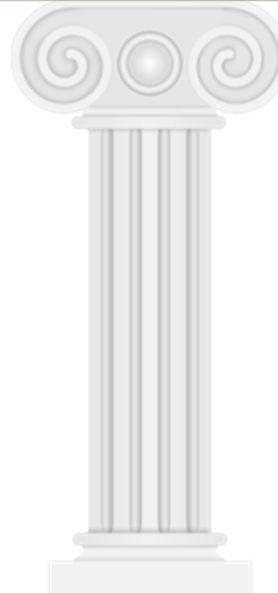
POLICY



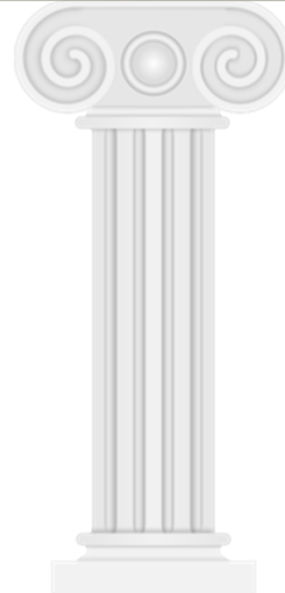
PLANNING



DOING



AUDIT



REVIEW

...A CYCLE OF CONTINUOUS IMPROVEMENT...





What is the Environmental Management System (EMS)?



- EMS is a series of 17 steps (or components) used for identifying and meeting requirements called for by laws and regulations
- Many of these components are already performed by your organization

- Garrison Commander's Environmental Policy
- What do we do?
- Are there any environmental impacts to what we do?
- What are the rules?
- What do we need to do our job?
- What are we trying to achieve?
- What training do we need?
- How do we keep people informed of changes?
- What documents do we need to communicate requirements?
- Are the procedures being used current?
- What local instructions are needed to meet requirements?
- Is there a need for emergency procedures?
- Are procedures in place to monitor compliance?
- Is the equipment used maintained and calibrated?
- Is a procedure in place to identify and resolve issues?
- Are records maintained?
- Is leadership involved in the system?





Why maintain an EMS?



- **EMS is mandated by Presidential Executive Order and AR 200-1**
- Mission + Related Environmental Requirements + JBLM administrative requirements = EMS
- EMS is YOUR organizations current management system with applicable environmental requirements identified and incorporated, incorporating worker & community health and safety, improving efficiency, minimizing environmental violations, liabilities & penalties
 - environmental stewardship
 - compliance
 - pollution prevention programs



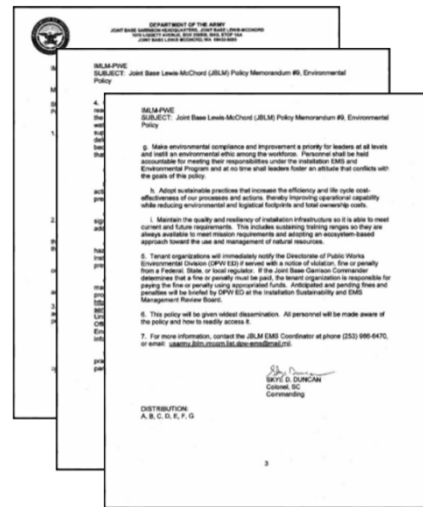


Why maintain an EMS?



JBLM Environmental Policy

- **JBLM Policy Statement #9**
- **Applies to all personnel operating on or for JBLM**
 - All personnel must read the policy and conform to its goals
- **Commits to:**
 - Legal, regulatory and policy compliance
 - Management of planning and operations through the JBLM Environmental Management System (EMS)
 - Continual improvement
 - Preventing pollution
 - Fully integrating environmental requirements into standard work practices and procedures
- **Policy is available on Environmental website :**





How does your job tie into the EMS?

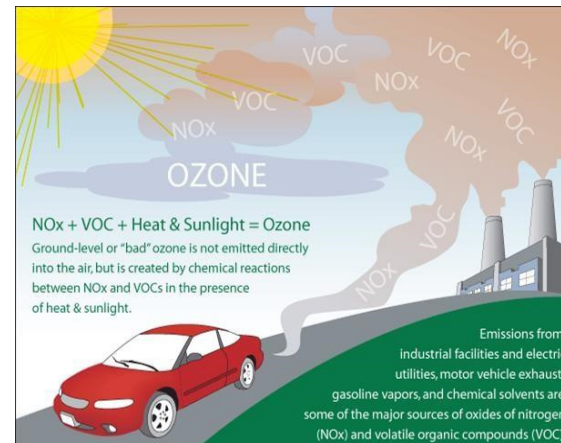


Identification of processes (what we do) and impacts (change caused)



PROCESS= Activities, products, or services that could potentially interact with the environment

IMPACT= Any change to the environment, whether adverse or beneficial, wholly or partially resulting from identified processes



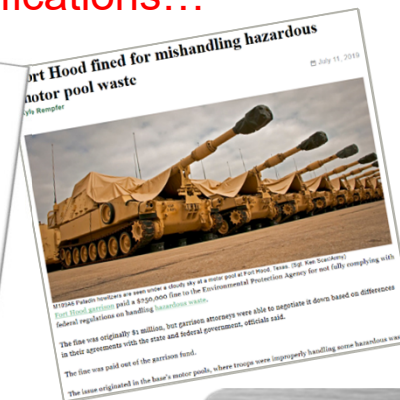
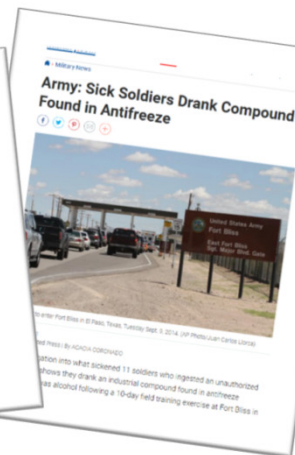
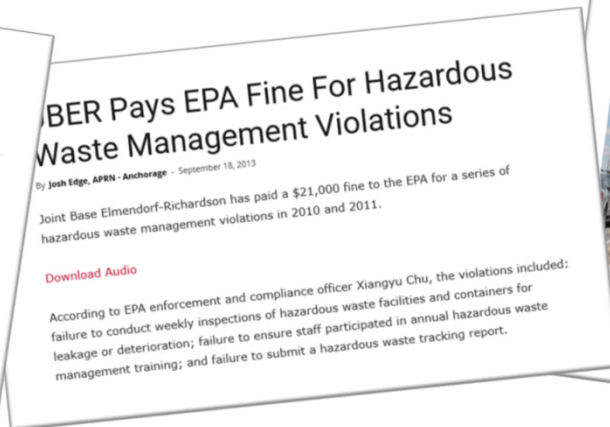
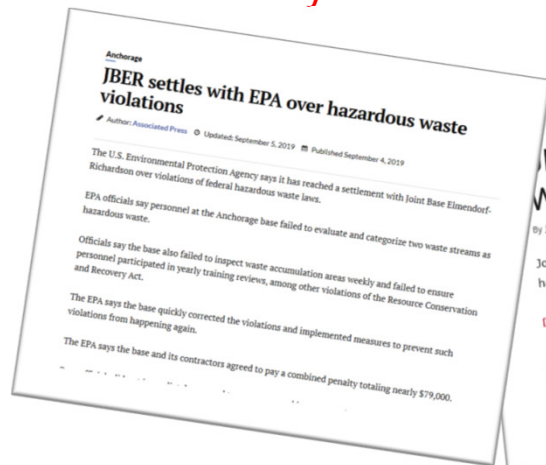


How does your job tie into the EMS?



Operational Controls

- Operational controls are the practices and procedures designed to ensure we meet our policy and objective requirements (mitigate impacts related to the processes that we perform)
- Operational controls must:
 - Be easy to understand and use
 - List personnel who should receive them
 - Identify required training
- Failure to abide by established operational controls can have severe ramifications...





How does your job tie into the EMS?



Annual Objectives

- Objectives are annual goals of an organization designed to address and mitigate significant impacts



- Targets are short-term quantifiable goals that move the organization closer to meeting the annual objectives. For example:
 - Percentage of completed Energy Audits
 - Number of certified Building Energy Monitors
 - Solar-sourced energy usage





What are JBLM's goals (objectives)



Air Quality

1. Reduce installation stationary source and non-tactical motor vehicle air emissions 85% by 2025



Energy

2. Achieve a secured renewable sourced energy installation by 2040



Sustainable Community

3. Create sustainable neighborhoods for a livable JBLM community that enhances the Puget Sound Region



Products and Materials

4. Achieve a net zero waste installation by 2025



Sustainable Lands

5. Maintain the ability of JBLM to meet its current and future military missions without compromising the integrity of natural and cultural resources, both on the installation and regionally
6. Assist in the recovery of all listed and candidate federal species in the South Puget Sound Region



Water Resources

7. Achieve a secured net zero water installation by 2040





What needs to be done?



Some key actions

Promote energy awareness, practice energy efficiency and use renewable energy

Purchase environmentally preferable products

Practice water efficiency and conservation

Participate in the recycling program and otherwise divert materials from the landfill

Participate in the Commute Trip Reduction (CTR) program

Protect natural and cultural resources

Prevent pollution

Participate in and promote sustainable planning and communities

Meet legal requirements





What can individuals do?



What you can do at home...

Conserve Water and Energy

Choose sustainably produced products

Drive less (vanpool/carpool/bike/walk)

Purchase products with little or no packaging

Avoid disposables, donate unwanted items

Create a garden

Volunteer





What can individuals do?



What you can do at work...

Understand your role in the JBLM EMS

Know how your duties interact with and negatively impact the environment



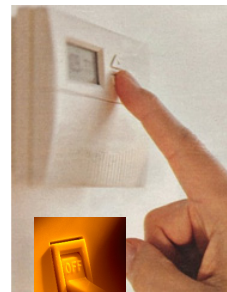
Take steps to reduce that impact



Treat work like home



Help JBLM achieve its sustainability goals





What can organizations do?



Military and civilian organizations

- Comply with the JBLM Environmental Policy and all requirements applicable to your operations. A list of legal and policy requirements from an installation management standpoint is available on Sharepoint and JBLM Environmental Division Website
- Operate in accordance with the JBLM Environmental Management System (EMS) or the organization Environmental Operating Permit (EOP)
- Establish and support organizational environmental objectives
- Participate in applicable environmental initiatives/programs
- Conduct training, job and mission requirements IAW JBLM regulations and policies (Note: ALL activities impact the environment; only the severity of impact is different)
- Identify non-environmental regulations and requirements that have environmental components (emergency response, safety, training, administrative, etc) and address/coordinate those components within the EMS





What can organizations do?



Contractors

- Comply with the JBLM Environmental Policy and all requirements applicable to your operations. A list of legal and policy requirements from an installation management standpoint is available at Environmental Website
- Coordinate with the JBLM Environmental Division via the Government project manager or Contracting Officer's Representative (COR)
- Develop and implement procedures to comply with applicable laws, regulations and policies
- Review and implement environmental requirements specified in the contract
- Develop required environmental plans
- Submit required environmental plans and other documentation to your Government project manager or COR
- As required, appoint and have trained environmental personnel





What can organizations do?



Contractors

- Only use hazardous materials authorized by JBLM Pollution Prevention
- Report all hazardous material inventories using [HJB Form 953](#)
- Follow the JBLM Master Plan (design and construction)
- Maximize recycling/diversion
- When working on historic buildings, ensure historic/cultural integrity is left intact
- Protect natural and cultural resources
- Report spills in accordance with installation regulations
- Be aware that requirements established by non-environmental regulations impact the environment





What are some examples of supporting actions?



Purchase sustainable products

- Comply with sustainable acquisition laws and policies
- Minimize use of toxic and hazardous materials
- Reuse materials when feasible and permitted
- Develop strategies to reduce energy, water, and material requirements
- Purchase durable products with extended life-spans and warranties





What are some examples of supporting actions?



JBLM solid waste & recycling

LeMay will not service contaminated, blocked, or overfull containers

Contact LeMay coordinator (253)875-5886:

- Service related issues
- Empty containers
- Email: JBLMLemay@wasteconnections.com

Contact JBLM Contract Officer (253)477-2988:

- To add, remove or exchange containers
- Adjust service and pickup frequency
- Closing a site and removing services





What are some examples of supporting actions?



What goes in the recycling bin?

Everyone on JBLM Recycles!

- In your organization
- At home, schools, gyms, events, Exchange
- Don't Wishcycle!
- Take caps off your bottles
- Keep your recyclables Clean, Empty & Dry
- When in doubt, throw it out!



RECYCLING

PREPARATION
empty · clean (quick rinse) · no lids

PLASTIC



PAPER



METAL



<https://home.army.mil/lewis-mcchord>
253.966.6444

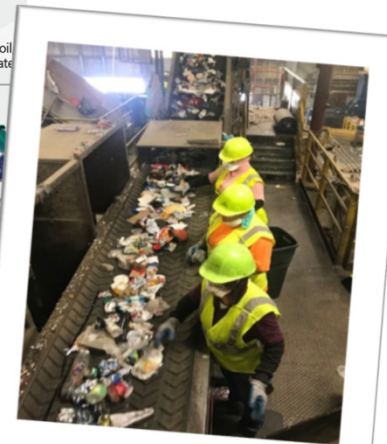
GARBAGE

Want to know why some things belong in the garbage
piercescountywa.gov/remind



DROP-OFF

Find locations for these items plus options for electronics, appliances, mattresses, clothing, foam packaging and more: piercescountywa.gov/recyclermenu





What are some examples of supporting actions?



Manage Household Hazardous Waste

■ On Base:

- Individuals living in military housing, billeting or dormitories on JBLM can turn in their household hazardous waste on post
- Batteries, lamps, propane, paints, fuels, oils, and household cleaning materials are accepted as long as containers are not leaking
- No military / civilian industrial / or commercial waste will be accepted
- HHW turn-in is at Bldg 9679 Rainier Drive, Logistics Center, Phone: 253-967-4786.
Hours of operation: Mon-Thurs 1300-1600, Friday 1300-1500

■ Off Base:

- Pierce County residents: <https://www.co.pierce.wa.us/1544/Household-Hazardous-Waste>
- Thurston County residents: <https://www.co.thurston.wa.us/solidwaste/hazardous/haz-home.htm>



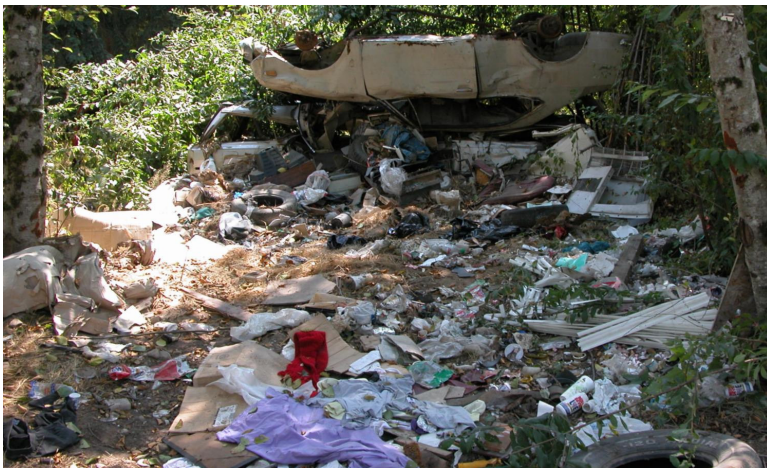


What are some examples of supporting actions?



Report illegal dumping

Includes garbage, recyclables, hazardous materials, furniture dumped in the training areas including non-containerized items, personal items (non-housing areas), property book items dumped in the cantonment



- Report illegal dumping on JBLM Lewis Main, Lewis North, and McChord Field by calling the Military Police (967-3107); or e-mail usarmy.jblm.id-readiness.list.dpw-trash-cop1@mail.mil
- At JBLM YTC, contact the Department of Army Police at (509) 577-3911





What are some examples of supporting actions?



Practice energy conservation

- Establish an energy monitoring program
- Appoint an Energy Conservation Officer
- Appoint a Building Energy Monitor (BEM) for each building that you organization controls
- Consolidate appliances used for personal use (e.g. coffee pots, refrigerators, and microwaves)
- Turn off monitors, speakers, and other peripherals when not in use
- Close windows when heat or air conditioning is running
- Adjust thermostats, when possible, to accommodate all. Do not exceed Army set points
- Conduct and record periodic checks



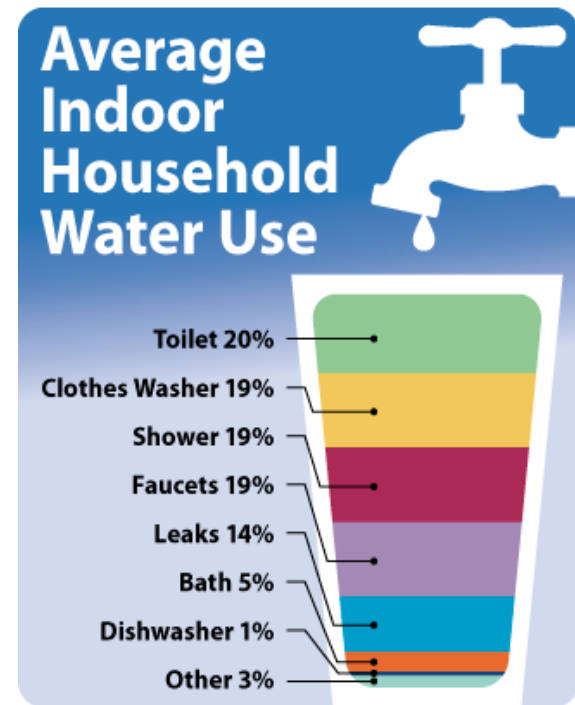


What are some examples of supporting actions?



Practice water conservation

- Minimize water use where possible & report water leaks
- Prevent contamination to groundwater
- No dumping in the stormwater drain, or ditches
- Clean up trash, use car wash facilities, pick up pet waste
- Report spills immediately
- Maintain personal and official vehicles to eliminate oil and gas leaks





What are some examples of supporting actions?



Use clean air practices

- Promotes alternative commute methods instead of driving a single occupied vehicle (SOV) Commute Trip Reduction
- Use some form of alternative transportation (biking, bus, train, vanpool, carpool, etc)
- Minimize vehicle idling
- Use alternative fuel in non-tactical vehicles equipped for those fuels (required by law)
- Consolidate administrative trips across the installation
- Refuel vehicles in the cool part of the day
- Open burning is largely prohibited, except as permitted by Army Regulation 200-1



Mass Transit
Benefit Program





What are some examples of supporting actions?



Protect natural and cultural resources

Endangered Species Act (ESA)

- Species listed under this Act, as well as their habitat, must meet additional management protections established by U.S. Fish & Wildlife Service and/or National Marine Fisheries Service
- Military training, construction, and other activities must adhere to these requirements



Clean Water Act (CWA)

- Establishes quality requirements for water bodies (oceans/river/lakes/wetlands). JBLM regulations must be followed to ensure these requirements are met



Washington
Department of
**FISH and
WILDLIFE**





What are some examples of supporting actions?



Protect natural and cultural resources

JBLM prairie habitat

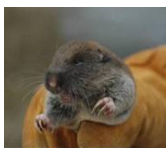
- Unique, fragile and rare ecosystem
- Protections include: no digging, no off-road vehicles and no bivouacking unless permitted
- Home to three ESA species
 - *Streaked horned lark* (THREATENED)
 - *Mazama pocket gopher* (THREATENED)
 - *Taylor's checkerspot butterfly* (ENDANGERED)



JBLM wetland and stream habitats

- Salmon migration corridors and spawning grounds
- Protections include: no unauthorized crossings and no off-road driving within 50 meters
- Home to three ESA species
 - *Water howellia* (THREATENED, Proposed for Delisting)
 - *Puget Sound Steelhead* (THREATENED)
 - *Chinook Salmon* (THREATENED)

JBLM HAS ENDANGERED SPECIES AND CRITICAL HABITAT





What are some examples of supporting actions?



Protect natural and cultural resources

- **JBLM training lands contain more than 400 archaeological sites**
 - American Indian villages, camps, cemeteries and sacred sites
 - Historic period homesteads, cemeteries, early military sites
- **It is a crime to damage, excavate, or collect archaeological resources without a permit**
 - Including Indian artifacts, bottles, cans, coins, etc.
 - Penalties include imprisonment (up to five years) and fines (up to \$100,000)



Metal detecting is PROHIBITED on JBLM

DIGGING REQUIRES A DIG PERMIT, EVEN AT YTC OR IN GARRISON!

- **Approved Work Order from PW required before altering historic buildings or landscapes**
 - Do not paint curbs, steps, windows, or doors
 - Do not install antennae or drill holes for cables or wires
 - Do not prune, add, or remove vegetation





What are some examples of supporting actions?



Protect natural and cultural resources

KNOW WHERE YOU ARE IN THE TRAINING AREAS

Follow the signs, restrictions, and downrange co-use SOPs for training areas and ranges, pay attention to signs and Seibert stake boundaries.

STOP

NO Vehicles Allowed (except on designated roads and parking areas **ONLY**)

NO Digging, bivouacking, or taking of vegetation

NO Civilians (unless an Area Access Permit (AAP) has been obtained prior to entry)

NO Horseback Riding (except on designated roads with an AAP **ONLY**)

VIOLATORS WILL BE PROSECUTED TO THE FULLEST EXTENT OF FEDERAL LAW
Report Violators to JBLM Military Police 253-967-7112/253-967-7113
(for access contact Range Control at 253-967-6371)





What are some examples of supporting actions?



Get involved

Get Outside



Volunteer



Conserve Energy



Drive less and save money!



**Reduce
Reuse
Recycle**



[Facebook.com/SustainableJBLM](https://www.facebook.com/SustainableJBLM)

QUESTIONS? 253-966-1734





JBLM Environmental Division Points of Contact

- <https://home.army.mil/lewis-mcchord/index.php/my-Joint-Base-Lewis-Mcchord/all-services/public-works-environmental-division/environmental-laws-regulations-and-policies>

JBLM YTC Environmental Division Points of Contact

- <https://home.army.mil/yakima/index.php/units-tenants/directorate-public-works>



