



U.S. AIR FORCE



07.08.20

Financial Health of the Force Community Leadership Information Forum

HOME OF AMERICA'S I CORPS AND 62D AIRLIFT WING

1030 11 FEB 26



ALCC, February 11th, 2026

AGENDA

Agenda Topic	Briefer/Agency	Time (Mins)
Opening Remarks (Overview, CLIF Themes Schedule, Major Events Calendar)	COL Henry	10
RSO (Services)	COL Foster	2
DES (Gate Operations, Traffic Safety Campaign)	LTC Lanni	2
CONUS COLA	LTC Wismann	2
AHO (Tenant Satisfaction Survey)	Ms. Wilson	2
AER (Campaign Details)	Ms. Cron/SFC Kong-Martinez	3
AFCS (Tax Preparation Services, Financial Support Services, Navigating a PCS)	Ms. Cron	4
USO (seminars, courses, workshops)	Ms. Reeves	2
BOSS (Events and Volunteer Opportunities)	SPC Downey	5
CYS (Childcare Fee Assistance Programs)	Mr. Woods	2
DFMWR (Facility Upgrades, Events, FoFS)	Mr. Davis	3
Closing Remarks (62 AW / I CORPS)	Senior Service Commanders	8
CLIF Notes	Total Time	45 mins

Please remember to say “I will be followed by...”



- **Base Operations:** RSO, DES, BOSS, DFMWR
- **Financial Readiness Programs & Facilities:** TAX Prep, USO, AER, AFCS
- **CONUS COLA Survey Statistics**
- **AHO Privatized Housing FY2026 Survey Schedule**

CLIF Theme Schedule

DATE	THEME	LOCATION
10 DEC 25	Year in Review and Transitions for 2026	McChord Club
14 JAN 26	Wellness and System of Care	ALCC
11 FEB 26	Financial Health of the Force	ALCC
11 MAR 26	Sponsorship, Reception, and Integration	ALCC
08 APR 26	Focus on Families - Month of the Military Child	McChord Club
13 MAY 26	Welcome to Summer	ALCC
10 JUN 26	Connecting to Your Community	ALCC
8 JUL 26	Mid-Summer Check In	McChord Club
12 AUG 26	Back to School	ALCC
09 SEP 26	Stewardship - Housing, Barracks, JBLM Facilities	ALCC
14 OCT 26	Servicemember Lifecycle	McChord Club
~13 NOV 26	Holiday Resources and Winter Preparedness	ALCC
9 DEC 26	Year in Review and Transitions for 2027	McChord Club

CLIFs are the second Wednesday of each month (1030-1200)



Community / Garrison Long Range Events February – May 2026

TODAY

February

Su	Mo	Tu	We	Th	Fr	Sa
1	2	3	4	5	6	7
8	9	10	11	12	13	14
15	16	17	18	19	20	21
22	23	24	25	26	27	28

Su	Mo	Tu	We	Th	Fr	Sa
1	2	3	4	5	6	7
8	9	10	11	12	13	14
15	16	17	18	19	20	21
22	23	24	25	26	27	28
29	30	31				

March

- 02-06 Read Across America week at McChord Library
- 04 AER Kickoff
- 11 CLIF
- 14 Shamrock Run & Flea market & Spring Flea Market
- 18 Housing Townhall
- 26 Civilian Hall of Fame
- 31 CONUS COLA Survey Ends

April

Su	Mo	Tu	We	Th	Fr	Sa
			1	2	3	4
5	6	7	8	9	10	11
12	13	14	15	16	17	18
19	20	21	22	23	24	25
26	27	28	29	30		

Su	Mo	Tu	We	Th	Fr	Sa
					1	2
3	4	5	6	7	8	9
10	11	12	13	14	15	16
17	18	19	20	21	22	23
24	25	26	27	28	29	30
31						

May

- 03 Leschi Honor Walk
- 07 Steering Committee
- 08 Mother's Day Buffet at ALCC
- 08 Mother's Day card making
- 13 CLIF
- 16 National Armed Forces Day
- 19 Military Spouse Round Table
- 21 Run to Remember
- 22-25 DONSA and Holiday
- 25 Memorial Day Ceremony
- 29 ACES Graduation

- 02-14 Date night in a bag at Grandstaff Library
- 11 CLIF
- 13-16 DONSA and Holiday
- 17 JBLM Community and Networking (CAN)
- 22 ASAP Clay Shoot for Couples
- 27 JBLM 3-Point Contest

- 01-30 Month of the Military Child
- 03-06 DONSA and Holiday
- 04 Fields of Friendly Strife 10-Miler
- 04 Easter Egg-stravaganza
- 06 CYS Closure
- 08 CLIF
- 24 Mullet Meeting
- 25 Kids Fest & Run
- 27-30 JBLM Spring Clean-up

APF for Families



Chaplain-led programs: authorized support.

Commanders may spend appropriated funds for chaplain-led programs to assist members of the armed forces on active duty and their immediate Family members when the program builds and maintains a Strong Family structure (Ref: Title X § 1789).

Authorized expenditures are:

- Costs of transportation
- Food
- Lodging
- Child-care
- Supplies
- Fees and
- Training materials



Catholic: Various Locations

Sunday 0900 Mass @ Lewis Main Chapel
Sunday 1030 Mass @ McChord Chapel #2
Sunday 1200 Mass @ Lewis Main Chapel
Weekdays 1200 Mass @ Lewis Main Chapel

Jewish: Lewis Main Annex Bldg

Friday Night Services at 1800 (First and Third Fridays only)

Buddhist: Lewis Main Chapel

Sunday 0900 Service

Islamic: Soldiers Chapel

Friday 1215 Dhuhur Prayer Service

New Moon Fellowship: BLDG T6195 Lewis

Sunday 1400 Fellowship

Norse Pagan: Four Chaplains Memorial Chapel –

Rm 118 Sunday 1400 Fellowship

McChord Traditional Protestant: McChord Chapel #1

Sunday 0830 Worship Service

Chapel Next: Four Chaplains Memorial Chapel

Sunday 1000 Worship Service

Lewis Main Protestant: Lewis Main Chapel

Sunday 1030 Worship Service

Madigan Chapel Protestant: MAMC Chapel

Sunday 0930 Worship Service

Unplugged Contemporary Christian Service:

Evergreen Chapel

Sunday 1100 Worship Service

Grace Gospel: Lewis North Chapel

Sunday 1100 Worship Service

Church of Jesus Christ of Latter Day Saints: Lewis

North Chapel

2nd/4th Monday 1830 Fellowship



Directorate of Emergency Services

Installation Updates

Madigan Gate Closures

- 28OCT25 until 28MAR26 (T). Logistics Gate open 24/7 UTC of Madigan ACP construction

Pendleton Underpass construction

- 19SEP25-07MAR26. Alternating traffic underneath bridge until construction is complete.

Law Enforcement

Traffic Emphasis

- **Enhanced Data Collection:** We are utilizing rotational speed boards and new discrete sensors to gather data for targeted enforcement
- **Analyzing Trends:** Recent data shows the highest speeds occur on weekdays between 1500-1800.
- **Increasing presence:** In response, we have increased the presence of radar patrols and leadership during these peak hours to ensure safety. Implementation of the updated 190-5 will go into effect 01MAR26.



FY25 Alcohol Rollup

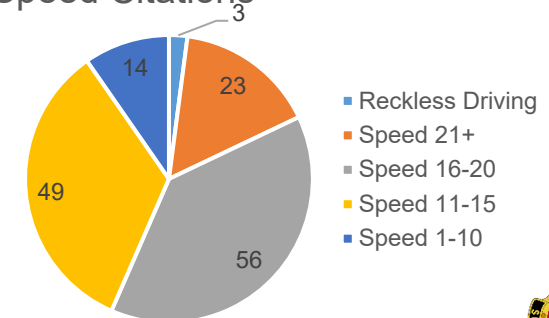
Alcohol Related Crimes (351 total)

#1 DUI (98) – 72 on post/26 off post (accounts for 28% of all SM alcohol offenses)

#2 Assault (42) (13% of all assaults with alcohol involved for FY25)

Key Takeaways: Key enforcement challenges remain DUIs (the most common alcohol offense) and high-risk speeding, with 39% of violators driving 16-20 mph over the limit.

JAN26 Speed Citations



CONUS COLA: Survey Statistics

2026 COLA Living Pattern Survey

Response Rates
As of January 30, 2026

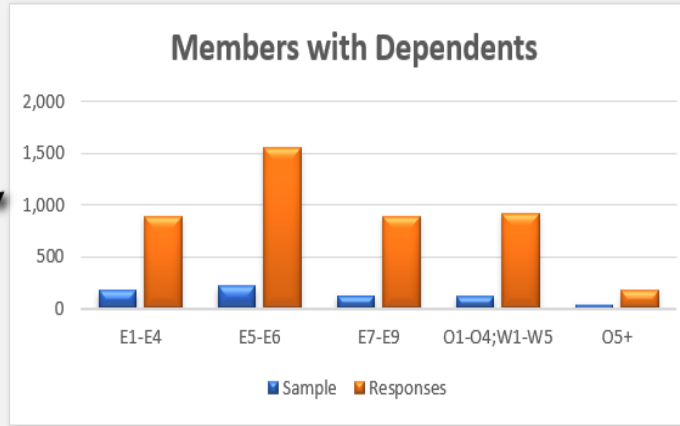
1. Selection a Region

CONUS

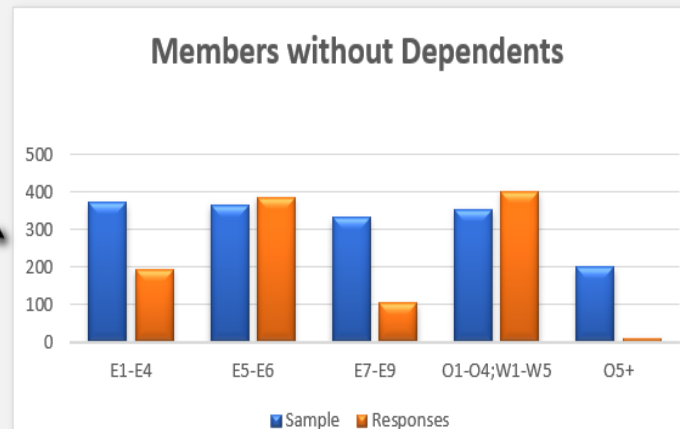
2. Selection a Location

WA311 - TACOMA, WA

Members with Dependents				
Pay Groups	Population*	Sample	Responses	Response Rate
E1-E4	326	177	891	503%
E5-E6	509	219	1,551	708%
E7-E9	189	127	895	705%
O1-O4;W1-W5	170	118	921	781%
O5+	44	40	171	428%
Total w/ dep	1,238	681	4,429	650%



Members without Dependents				
Pay Groups	Population*	Sample	Responses	Response Rate
E1-E4	11,314	372	194	52%
E5-E6	7,844	366	386	105%
E7-E9	2,458	332	104	31%
O1-O4;W1-W5	4,371	353	402	114%
O5+	412	199	10	5%
Total w/o dep	26,399	1,622	1,096	68%



Grand Total	27,637	2,303	5,525	240%
--------------------	---------------	--------------	--------------	-------------

* Population figures are sourced from the Defense Manpower Data Center and may be subject to errors.

BLUF: Don't stop encouraging SM's to take the survey!

Goal: 100% response rate, not 100% "sample"

Message: This is YOUR chance to influence your pay! Your response matters!

Biggest response gaps:

- Single E1-E4
- Single E7-E9
- Single O5+



FY2026 Tenant Satisfaction Survey (TSS)

- TSS will launch 2 March – 1 May
- Housing residents and Unaccompanied service members will receive an email from CEL & Associates, a third-party DoD uses to administer the survey
- The email will provide each resident and unaccompanied service member with an access code and link to survey (Check your spam folder)
- Each household and unaccompanied service member will only be able to complete one survey
- If a survey is not received from CEL by 4 March, you should email ArmyHousingSurvey@celassociates.com to obtain a survey link
- Participation in the survey is voluntary, but each resident and unaccompanied service member is highly encouraged to take the time and submit a survey
- The results of the survey are used to make improvements in both housing and unaccompanied barracks and dorms



2025 Statistics

DONATIONS: \$99,877

2,065 active-duty Soldiers donated
8% participation rate

ASSISTANCE: \$3,304,334

1,518 active-duty Soldiers and Families

Assistance Breakout for AD and Retirees

810 Loans = \$1,901,171

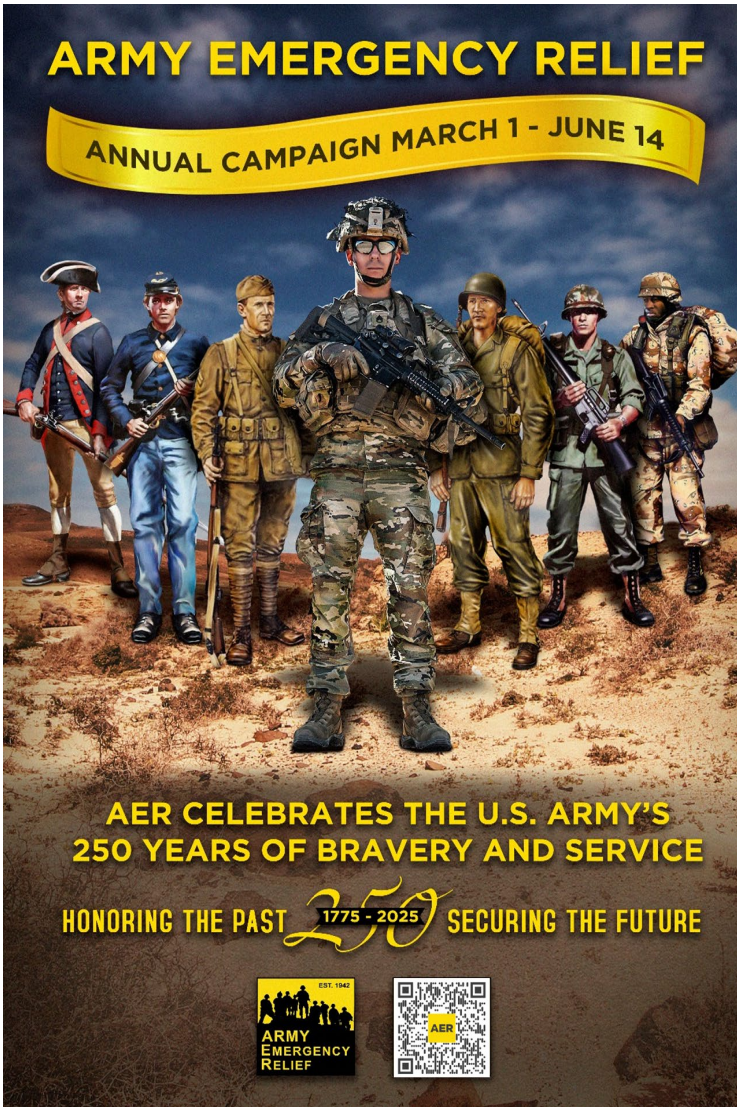
288 Grants = \$268,399

473 Loan/Grant Combo = \$1,305,857

Total Assistance:

\$ assistance: \$3,475,427

cases: 1,571



Campaign Events:

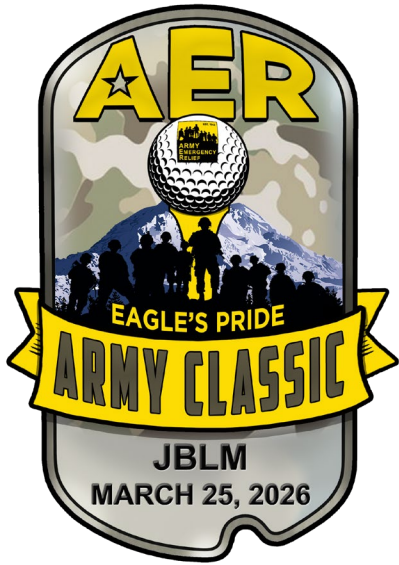
2026 AER Campaign Kick-off

4 MAR, Carey Theater, 1030-1130

NEW!!! AER Golf Scramble

25 MAR, Eagles Pride;

Come golf with AER CEO Tony Grinston, 16th CMA (retired)
Stay tuned for more details



More to follow:

AER Softball and Pickleball Tournaments





Assistance Category Updates:

1. No new categories at this time
2. Review: Emergency Travel and PCS Move assistance

- Reminders:

- AER does not reimburse expenses; apply for assistance first
- Online assistance is becoming more prevalent; still assisting walk-in applicants
- Emergency travel and privation issues are top priorities and are assisted first



Air Force Aid Society (AFAS)

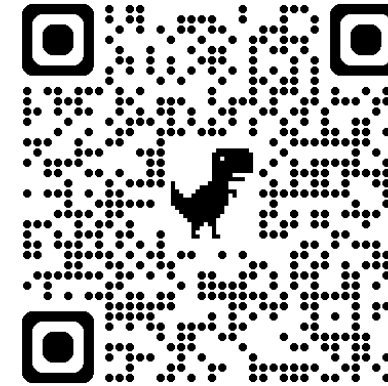


- **2026 Air Force Assistance Fund (AFAF) Campaign (Feb-May)**
 - Please contact your unit Campaign Manager or First Sergeant to make a donation, or call (253) 982-7027
- AFAS Application processing and case management are all Virtual
 - All **AFAS Emergency Travel Requests** are required to go through the American Red Cross by calling **(877)272-7337**
- Have questions or need help applying?
Call (253) 982-7027

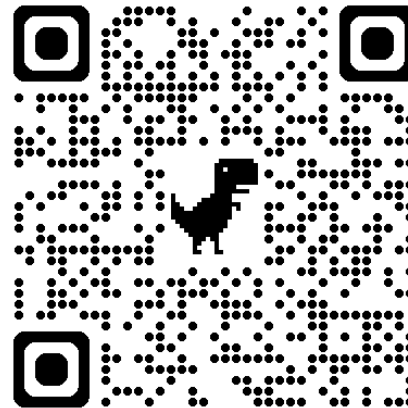
ONLINE APPLICATIONS



<https://www.armyemergencyrelief.org/>



<https://afas.org/>



IRS Free File Options: <https://www.irs.gov/filing/free-file-do-your-federal-taxes-for-free>

1. Guided tax software

- For \$89,000 [adjusted gross income \(AGI\)](#) or less
- Let the software do the work
- You choose from IRS partner tax software companies
- Simple questions to guide you
- Accurate math calculations guaranteed
- Some free state tax preparation and filing
- Spanish tax preparation and filing available

2. Fillable Forms

- For any income level
- You do the work
- Enter your information into online forms you select
- Form instructions guide you
- Limited calculations used
- No state tax filing

Standard Deduction Increase:

Single/Married Filing Separately

Married Filing Jointly/Qualifying Surviving Spouse

Head of Household

2024

\$14,000

\$29,200

\$21,900

2025

\$15,750

\$31,500

\$23,625

MilTax (Military OneSource): File your taxes confidently with MilTax, the only free tax service made exclusively for the military.

MilTax provides military-specific tax preparation software and expert support to help the military community navigate their taxes accurately and with ease.

Both the tax software and expert consultations are free for active-duty service members, [eligible family members](#), survivors and recent veterans up to 365 days from their separation or retirement date.



<https://www.militaryonesource.mil/financial-legal/taxes/miltax-military-tax-services/>

To obtain additional tax information for members of the military from the IRS, visit:
<https://www.irs.gov/individuals/military>

AFCS Financial Support Services

Offering one-on-one appointments
Unit classes instructed upon request

JBLM-Lewis Main
2140 Liggett Avenue
(Waller Hall)

JBLM-McChord Field
100 COL Joe Jackson Blvd.
(The Castle)
Tue and Thu

Hours of Operation
Mon – Fri : 0900-1600
Open on DONSA's;
Closed on federal holidays

Phone: (253) 967-1453

- Budgeting/Spending Plans
- Saving & Investing Basic
- Money Management
- Financial Goal Setting
- Consumer Awareness:
 - Frauds, Scams,
 - Identity Theft
- Home Buying Basics
- Security Clearance Issues
- Credit Reports:
 - Review and Repair
- Credit Management
- Blended Retirement System (BRS)
- Retirement Planning
- Thrift Savings Plan (TSP)
- Debt Management
- Car Buying
- Student Loan Debt Management
- Milestone Classes
- Unit Classes
- One-on-One Confidential Personal Financial Counseling Sessions
- **Schedule appointments:**
<https://jblmfrp.timetap.com>

Where do I Start?

1. Learn Entitlements and Limitations
2. Review the JBLM Reassignments online Levy Briefing
3. Review online PCS Move slides and handouts on the Financial Frontline website
<https://www.financialfrontline.army.mil/Soldiers/Permanent-Change-of-Station/>
4. Pre-plan by talking with a financial counselor to discuss budgeting and unexpected expenses you may encounter along the way. Make an appointment at <https://jblmfrp.timetap.com/>
5. Visit PCS & Military Moves on MilitaryOneSource for additional information and resources:
<https://www.militaryonesource.mil/moving-pcs/plan-to-move/pcs-and-military-moves/>



Shipping a Vehicle?

1. Depending on the orders, if a vehicle can be shipped, generally only one vehicle is covered by the government
2. Check online at PCSmyPOV.com for specific information
<https://www.pcsmypov.com/>

Driving a Vehicle?

Refer to the Defense Travel Management Office to find out what is covered and determine the mileage rate allowance
<https://www.travel.dod.mil/Travel-Transportation-Rates/Mileage-Rates/>

CONUS/ OCONUS

Sign up for classes for additional information and a Question & Answer opportunity at <https://jblmrelo.timetap.com>

Who Pays for this Move?

The government pays for the move within the parameters and limitations as defined by the Joint Travel Regulations.



EXPAND YOUR FUTURE OPPORTUNITIES

at every stage of your military journey.

Enhance your career with the USO Transition Program. Access free professional development resources and educational certificates designed just for you! Empower yourself with the competitive advantage you need to navigate military life changes confidently from one PCS to the next and back to civilian life!

Program Support includes:

- Education
- Employment
- Financial Wellness
- Mentorship Opportunities
- Resume Support
- Interview Preparation



FOR THE PEOPLE WHO SERVE.™



Contact a USO Transition Specialist today to develop a personalized plan!

USO.org/transition

USO TRANSITION PROGRAM

The USO is a not-for-profit organization and not part of the Department of Defense (DOD).



FOR THE PEOPLE WHO SERVE.™

ARE YOU A MILITARY SPOUSE?

Gain a competitive advantage as you navigate through every change in your military journey.



Contact a USO Transition Specialist today to develop a personalized plan!

USO.org/SpouseSupport

USO TRANSITION PROGRAM

The USO is a not-for-profit organization and not part of the Department of Defense (DOD).





Serving JBLM and the Northwest Military Community



LEWIS CENTER

Computers, Printer, TV Lounge, Lunch, Snacks
 Lewis Main, 12th St @ Pendleton Blvd
 Monday – Friday 0900 – 1600
 POC – ddutcher@uso.org



TRANSITION CENTER

Career / Professional Development Services
 Lewis Main, 12th St @ Pendleton Blvd
 Monday – Friday 0900 – 1700 or by Appt
cellis@uso.org
mreeves@uso.org

***** UPCOMING EVENTS *****

- Pizza Party Lunch: 03 FEB 1100, Lewis Center
- Pizza Party Lunch: 10 FEB 1100, Lewis Center
- Wings Wednesday Lunch: 11 FEB 1100, Lewis Center
- Coffee Connections Spouses: 18 FEB 1000, Lewis Center
- Thanks for Service Lunch: 25 FEB 1100, Lewis Center
- Food for All Food: Every Thursday 1430 – 1830, Devotion Park

LEWIS CENTER NEW HOURS

- MONDAY - FRIDAY
- 0900 - 1600



McCHORD SHALI CENTER

Computers, Printer, TV Lounge, Lunch, Snacks
 McChord, Next to PAX Terminal
 Monday – Friday 0900 – 1500
 POC – jmcdonald@uso.org



MOBILE EVENTS

Four USO-on-wheels supporting area bases
 Family Days, Deployments, Special Events
 WA Mobile Request: northwest.uso.org/mobile
 WA POC: jmcdonald@uso.org OR, ID Mobile Request:
northwest.uso.org/oridamobile OR, ID POC:
jkeller@uso.org



CONNECT WITH US
northwest.uso.org
facebook.com/USONorthwest





**BETTER OPPORTUNITIES
FOR SINGLE SERVICE MEMBERS**

February Events

- 12th - **CPR Class** (0830-1200)
 - BOSS Conference Room - Warrior Zone
- 18th - **Bowling Night** (1700-1900)
 - Bowling Arena Lanes - Main Post
- 19th - **Community Meeting** (1400-1500)
 - Stone Education Center - Main Post
- 20th - **Sculpting Class** (1000-1230)
 - McChord Arts and Crafts Center
- 25th – **Yoga Class** (1030-1130)
 - Wilson Sports and Fitness Center - North Fort
- 26th - **LPD Class** (1000-1200)
 - BOSS Conference Room - Warrior Zone
- 27th - **Healing Farm** (1200-1330)
 - Yelm, WA

Volunteer Opportunities

- 13th - **CYS Youth Soccer Camp** (1630-1900)
 - Building 2295 South 12th Street (Parent Central Services)
- 17th - **Thrift Store** (1000-1200)
 - Lewis Main Thrift Store

JBLM BOSS Event Sign Up



Instagram:
@JBLMBOSSTEAM
Office #: 253-967-5636





MCCYN is a fee assistance program that keeps affordable child care in reach for eligible families. It's intended for families who cannot access military-operated care due to distance or waitlists. With fee assistance, a portion of your child care cost is paid to reduce the cost of using community-based care. The goal is to make it easier for you to afford quality child care from local community providers when you cannot access military care.



Available to:

- **Army active duty** members
- **Army Reservists** on active duty
- **Army National Guard** on active duty
- **Army civilians**
- **Gold Star spouses**
- **Air Force active duty** members
- **Air Force Reservists** on active duty
- **Air Reserve Technicians**
- **Air Force civilians**
- **Gold Star spouses**

Scan QR codes for details



ARMY



AIR FORCE



State Fee Assistance



Washington Working Connections for Child Care (WCCC): Helps eligible families pay for childcare. When a family qualifies for childcare subsidy benefits and chooses an eligible provider, the state pays a portion of the cost of childcare. Parents may be responsible for a copayment to their provider each month.

- Must reside in Washington state
- A family's income must be at or below 60% of the State Median Income (SMI) at application or 65% of SMI when reapplying
- Must have resources under \$1 million
- Expanded eligibility for Childcare workers and FCC providers
- Families in care off post can receive fee assistance and state subsidy
- CYS employees can receive a state subsidy on top of employee discount



Ongoing upgrades:

- 24/7 access at McChord Fitness Center has been restored.
- Warrior Zone closed effective 09 FEB and will remain closed for at least 90 days for a construction project.
- Arts & Crafts Center remains in the temporary location through Spring 2026 for an HVAC project (739 Battery Rd., McChord Field).
- Friendly reminder: Family Resource Center was turned over at the end December. For other facility reservations, email jblmmwrcatering@army.mil.

Closures:

- **CYS Closure Dates FY26**
 - 06 April 2026
 - 28 August 2026 (ALL MWR Closure)

Warrior Zone Updates & Activities





**Perfect for
ORG Days!**

Unit Funds



Unit funds are nonappropriated funds provided for the entertainment, recreation and comfort of the personnel of the unit, but only when equitable benefits accrue to all personnel of the unit.

The annual allocation to units is

\$4 per Service Member

based upon assigned strength.

Use your funds at MWR facilities!

- Equipment rentals or trips at Outdoor Rec
 - Unit Fun Shoots at Shotgun Shooting Complex
 - Bowling at Bowl Arena Lanes (rent out the alley!)
 - Pavilion rentals at Shoreline Park on American Lake
 - Rent the MWR Fest Tent
 - Golf outings at Eagle's Pride or Whispering Firs
 - Tickets at Leisure Travel Services
 - McChord Arts & Crafts
 - MWR Catering for Unit Balls, Prayer Breakfasts & more
- Food/non-alcoholic items from
- American Lake Conference Center
 - Habanero Mexican Grill
 - McChord Club
 - Strike Zone Café
 - Texas Roadhouse at JBLM
 - Warrior Zone Café

Unit Funds Office
2013 N. 3rd St. Rm 338
Lewis Main, 98433
253-966-4300

USE IT OR LOSE IT!
UNIT FUNDS EXPIRE
EVERY FISCAL YEAR





Great Deals for Junior Enlisted

New additions effective 1 OCT 25



Golf

• E1-E4: 1 round of 9 holes free at Eagle's Pride, Green Course.
Mon-Thu: anytime, Fri-Sun: after noon

• Tiered Pricing on Simulator (via rank)

• Tiered Pricing on Memberships (via rank)



Bowling

• E1-E4 and Families: Free 1 Hour Lane Rental (or 1 Game)
Wed-Thu 1700-2000

• E1-E4: \$5 discount for unlimited hour

• E1-E4: Discount \$1 per Game / \$1 Shoe Rental



Auto Skills

• E1-E4: 20% discount on lift bay rental

• E1-E4 and Families: 2 Free Hours Bay Usage (daily) at Lewis & McChord



Rentals

• E1-E4 and Families: 50% Discount Daily Equipment Rental (i.e. Camping, Fishing, Party Equipment) Excludes RVs, Trailers, Pavilions and motorized boats
• Free Unit Issue - Org Day Equipment
• All AD Free Climbing Wall



RV Storage & Moorage

• Tiered Pricing (via Rank)



Cabins & Camping

• Tiered Pricing (via Rank)

GREAT DEALS for Junior Enlisted



Events Calendar



Fitness Class

Free participation for all MWR-eligible patrons in all MWR group fitness classes



Unit Funds

• \$4 per Service Member in the unit, annually. Funds do not roll over.

Must use in MWR: Outdoor Recreation, MWR Catering, Texas Roadhouse, Org Days, Bowling or Golf, etc.

Must benefit entire unit.



Pools

• **Free pool access for all MWR-eligible patrons**

• Splash Parks and American Lake access free to all

• E1-E4: Discount on Youth Swim Lessons



Conference Space

• \$0 Room Fee @ Bistro Mon-Fri (Units, SFRGs, Registered POs) Self-Set-Up / Clean.

Outside food & beverage is authorized



Leisure Travel

• Discounted Tickets One Day Prior to Special Event - Targeted towards BOSS Program or E1-E4



Races

Free- Ten-Miler, JBLM Run to Remember, wear blue: Veterans Day.

Paid- Includes shirt & medal: Shamrock Run, Down & Dirty Trail Run, JBLM Half-Marathon, Run, Rudolph, Run. Units can join free, for FoFS points, but no shirt or medal.

Other FREE MWR Programs*

- Warrior Zone (excl. food)
- Sounders Indoor Playground
- Intramural Sports
- Libraries
- Children's Museum / ASYMCA
- Resiliency Thru Art Programs

* Some exclusions apply

JBLMmwr



FEBRUARY

1: Cross-Country Ski	\$65
4: Night Cross-Country Ski	\$65
7: Photo 101	\$45
7: Franklin Falls Snowshoe	\$55
8: Elliot Bay Trail - Photo 201	\$60
9: Alpine Climbing Course - first class	\$625
13/14: Mount St. Helens Sunrise Summit	\$270
14: Backcountry Ski Tour	\$125
14: Sweetheart Snowshoe Trip	\$65
15: Pikes Place Market - Photo 201	\$60
18: Intro to Rock Climbing	\$45
18: Intro to Fly Fishing	\$50
18: Night Cross-Country Ski	\$65
21: Bruni's Bowl Snowshoe/Cross-Country	\$75
21: Arboretum Photo Walk - Photo 201	\$60
22: Jr. Explorers Billy Frank Jr. Nisqually	\$40
28: Photo 101 - Photo Editing	\$45
28: Backcountry Ski Tour	\$125
28: Mount Baker Artist Point Snowshoe	\$75

MARCH

1: Cross-Country Ski	\$65
4: Night Cross-Country Ski	\$65
4/5: Fly Fishing Overnight Camp	\$600
7: Photo 101	\$45
7: High Hut Snowshoe/Cross-Country	\$75
8: Intro to Fly Fishing	\$50
11: Intro to Backpacking	\$20
14: Backcountry Ski Tour	\$125
14: Photo 201 - Ballard Locks	\$60
14: Spire Rock Field Trip	\$50
15: Explore Hoh Rain Forest	\$70
15: Mount Rainier Snowshoe	\$65
16: Belay Class for Parents	\$70
18: Night Cross-Country Ski	\$65
18: Intro to Rock Climbing	\$45
21: Photo 101 - Photo Editing	\$45
21: Hike Mount Stormking & Marymere Falls	\$75
22: Photo 201 - UW Cherry Blossoms	\$60
28: Backcountry Ski Tour	\$125
28: Wilderness First Aid Training	\$200
28: Seattle Underground Tour & Pikes Place	\$70
28: Outdoor Rock Climbing	\$125
29: Jr Explorers Flaming Geyser River Trail	\$40

OUTDOOR REC WINTER CALENDAR



253-967-7744

NW Adventure Center

JBLModr.com



JBLMmwr



JBLM 3-POINT CONTEST

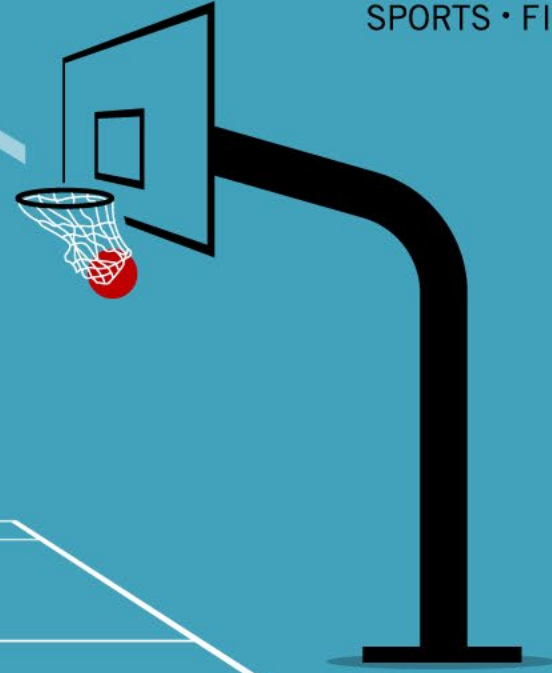


Friday
Feb 27 | 4-6 PM

Make the most 3-point shots
from around the world!
Sign up at the McChord
Fitness Center front desk.



Make it rain!



FREE

McChord Fitness Center



JBLMmwr



253-982-6707

Emerald Expedition



After the race stop by the **SPRING FLEA MARKET** at the American Lake Conference Center! 10 a.m.-1 p.m.



Saturday, March 14

Wilson Sports & Fitness Center

11 a.m.

1K/5K

Military Affiliated: \$15/\$35
Non-Military: \$20/\$45

Race fee includes:

Medal, T-shirt, Bib, Irish Stew and Adult Beverage. (21 & up)

Register by Feb. 19 to guarantee a shirt.
Online registration closes March 11.
Day-of-race registration: 9:30-10:30 a.m.

Packet Pick-Up: March 13, 11 a.m.-6 p.m.
Wilson Sports and Fitness Center

Register: JBLMraces.com



SPONSORED BY

No federal endorsement implied.





IHG[®] MILITARY HOTELS

Proudly Present



Explore JBLM & Beyond

TOURISM FAIR

Saturday, March 14, 11 am–3 pm
American Lake Conference Center

Learn about things to do,
 eat and see in and around
 JBLM and the Pacific Northwest!

- Door prizes • Trips • Hotel stays & more!

FREE ADMISSION

No federal endorsement implied.

Sponsored by:



Tacoma Rainiers | State of Washington Tourism | Pretty Gritty Tours | Anthony's Restaurants

JBLMmwr





Emerald Expedition

Spring Flea Market Saturday, March 14 11 am - 3 pm

American Lake Conference Center

Clean out your closet, garage or attic! 10x10 space: \$40 | 10x20 space: \$60

Home-Based Businesses get a 50% discount

Vendor Application
Due by Feb. 28



Return to:
JBLMSpecialEvents@army.mil



JBLMmwr 





THE SPARE ROOM

**ALL PACKAGES INCLUDE
3 HRS OF BOWLING AND SHOES.**

Package A: \$250 | 2 lanes
10 people, 3 large pizzas, 2 soda pitchers

Package B: \$300 | 3 lanes
15 people, 4 large pizzas, 3 soda pitchers

Package C: \$350 | 4 lanes
20 people, 5 large pizzas, 4 soda pitchers

Package D: \$400 | 5 lanes
25 people, 6 large pizzas, 5 soda pitchers

Package E: \$450 | 6 lanes
30 people, 7 large pizzas, 6 soda pitchers





Spend your spring break at the pool with daily swim lessons!

We are offering classes from Preschool to Level 4.

Session 1: March 30-April 3 | Session 2: April 6-10

Sign up for either week or both weeks. Offered on a first-come, first-serve basis.

Online registration opens: March 7, 10 am

SPRING BREAK SWIM CAMP

For ages
6-14



Kimbro Pool

Info: 253-967-5026

Cost per week:

E1-E4: \$35, E5-O3: \$40, O4+: \$50

Civilian/Retiree/Veteran: \$60

Upcoming events



2026 MWR Major Events
Promotional Video



JBLMmwr   

MWR is pleased to announce an exciting schedule of major community events in 2026!

Signature events include Kids' Fest (during the Month of the Military Child), a two-day Freedom Fest, Back-to-School Beach Bash, Oktoberfest and a monthlong Winterfest celebration.

Great opportunity for SFRGs, Booster Clubs and Private Organizations to partner with us!

Coming soon:

**Emerald Expedition:
Shamrock Run, Flea
Market and Tourism Fair**

Saturday, March 14 at Wilson Gym and American Lake Conference Center

**Month of the Military
Child**

April 1-30 at various locations

Easter Egg-Stravaganza

Saturday, April 4 at Lewis North Athletic Complex



JBLM MWR

FoFS Scoreboard & Upcoming Events



Leaderboard	BDE/GRP	BTN/SQD
First	1 MDTF	1-51 ADA
Second	MAMC	1-37 FA
Third	17th FAB	I CORPS HHBN

Full FoFS schedule:



Current Events

- CC Basektball
26 Jan – 12 Mar (SFH)

Upcoming Events

- Open Flag Football
23 Feb-19 Mar (LNAC)
- CC Outdoor Soccer
16 Mar – 30 Apr (LNAC)
- CC Ten Miler run
4 Apr (Scout Out Gate)

SFRGs/Booster Clubs/POs

Concessions/Food Booth

Partner with Us!





X JBLMmwr

f JBLMmwr

Instagram JBLMmwr

JBLM MWR
SERVICE MEMBERS · FAMILIES · RETIREES · CIVILIANS

JBLMmwr.com



Closing Remarks



Air Force Senior Commander
Army Senior Commander



JBLM CLIF Notes (FEB 2026)

Upcoming Events

- 01-15 Date night in a bag at Grandstaff Library
- 05 JBG Prayer Breakfast
- 05 Neighborhood Engagement & Advisory Team
- 05 Single Service member Chili Cookoff
- 08 Super Bowl Watch party
- 09 Warrior Zone Closure for renovations (+ 90-days)
- 11 CLIF - Financial Health of the Force
- 11 HAWK Hiring Fair
- 13-16 DONSA & Holiday
- 17 Community and Networking (CAN)
- 22 ASAP Clay Shoot for Couples

1. Department of Emergency Services

- a. Madigan Gate Closures: ECD 28 MAR 26. Logistics Gate open 24/7 until completion
- b. Pendleton Underpass construction: ECD 07 MAR 26. Alternating traffic underneath bridge until construction is complete
- c. Key traffic challenges remain DUIs (most common alcohol offense) and reckless speeding: 39% drive 16-20 mph over limit

2. CONUS COLA Living Pattern Survey – Submit NLT 31 MAR 26

- a. Help determine CONUS COLA Rates: Scan QR
- b. One survey per household, 15 minutes to complete, no CAC or government computer required.
- c. Biggest response gaps: Single E1-E4, Single E7-E9, Single O5+
- d. Additional Details: <https://www.travel.dod.mil/Allowances/CONUS-Cost-of-Living-Allowance/Living-Pattern-Survey/>

3. Tenant Satisfaction Survey – 2 MAR – 1 MAY 26

- a. Help improve housing and unaccompanied barracks/dorms
- b. CEL & Associates, will email each resident the survey link /access code. (ArmyHousingSurvey@celassociates.com)
- c. One Survey per household

4. 2026 Army Emergency Relief and Air Force Aid Online Applications

- a. AER: <https://www.armyemergencyrelief.org/>
- b. AFAF: <https://afas.org/>

5. Filing Taxes

- a. IRS Free File Options: <https://www.irs.gov/filing/free-file-do-your-federal-taxes-for-free>

6. Washington Working Connections for Child Care (WCCC)

- a. Helps eligible families pay for childcare: <https://www.dcyf.wa.gov/services/earlylearning-childcare/getting-help/wccc>

7. Nourish Weekly Food Pantry Volunteer Opportunities

- a. Military or Civilian Volunteers are welcome to sign-up (QR Code at left)

Next CLIF: 11 March 2026 @ ALCC – Theme: Sponsorship, Reception, and Integration

