

# Agenda

## CLIF NOVEMBER 12<sup>TH</sup>, 2025 ALCC

| Agenda Topic   | Briefer/Agency                    | Time (Mins) |
|--|-----------------------------------|-------------|
| Opening Remarks (Overview, MAPA, Calendars)  | COL Handke                        | 6           |
| Religious Support Office (Services Times & Events)   | COL Foster                        | 2           |
| DES (Gate/Road Closures, Gate Holiday Hours, Winter Weather Driving Safety, PT & Run Route Safety)                     | LTC Lanni                         | 8           |
| IRC (Opportunity & Holiday Block Leave Procedures)   | CPT Craig Samuel                  | 2           |
| MAMC (Flu Vaccination Drives)  | LTC Katina Foxworth               | 2           |
| R2PC Mental Performance and Resilience Consultants (Mental Health & Resiliency Tools)                                  | Claire Harding                    | 4           |
| Red Cross Services   | Will Willis                       | 2           |
| ASYMCA (Operation Ride Home & Waiting Room Data)   | Wes Wuco                          | 2           |
| AAFES (Holiday Events & Hours)   | Asia Gilchriest                   | 2           |
| DeCA (Holiday Events & Hours, Turkey & Ham Update)   | Leroy Daniels                     | 2           |
| USO (Holiday Events & Hours)   | MacKenzie Reeves/Jessica McDonald | 2           |
| Severe Weather & Delayed Reporting   | Russell Henderson                 | 2           |
| LMH (Ice & Snow Removal Plan, other updates)   | James Bloom                       | 5           |
| BOSS   | SFC Hilary Downey                 | 2           |
| Holiday Food Assistance Program, Nourish Pierce County, Eloises Cooking Pot  | LTC Jeffrey Wismann               | 3           |
| AFCS Holiday Assistance Programs   | Mary Cron                         | 3           |
| DFMWR (JR Enlisted Activities Fees, Facility upgrades, Outdoor Rec 3-mo Calendar/Epic Pass, Events/Turkey Shoot, FoFs) | Bruce Antonowicz                  | 10          |
| Closing Remarks  | Senior Service Commanders         | 10          |
| CLIF Notes   | N/A                               | N/A         |





U.S. AIR FORCE



# Holiday Resources & Winter Preparedness Community Leadership Information Forum

HOME OF AMERICA'S I CORPS AND 62D AIRLIFT WING

**Joint Base Garrison  
1030 12 November 2025**



- 1. Installation Services**
- 2. On Base Partners & Organizations**
- 3. Winter Fest + Highlights!**



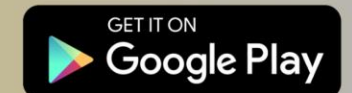
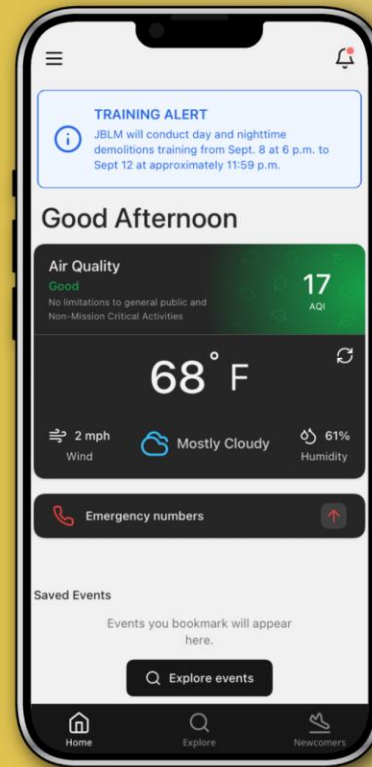


# Download the My Army Post App ...and Joint Base



## Stay in the know at JBLM

- Installation Services
- Gate Hours
- Community Events
- Weather
- Resources
- **AND MORE**



## Stay Ready, Stay Connected!



# Calendar Year 2026 CLIF Schedule

| DATE       | THEME  | LOCATION     |
|------------|--|--------------|
| 10 DEC 25  | Year in Review and Transitions for 2026          | McChord Club |
| 14 JAN 26  | Wellness and System of Care                      | ALCC         |
| 11 FEB 26  | Financial Health of the Force                    | ALCC         |
| 11 MAR 26  | Sponsorship, Reception, and Integration          | ALCC         |
| 08 APR 26  | Focus on Families - Month of the Military Child  | McChord Club |
| 13 MAY 26  | Welcome to Summer                                | ALCC         |
| 10 JUN 26  | Connecting to Your Community                     | ALCC         |
| 8 JUL 26   | Mid-Summer Check In                              | McChord Club |
| 12 AUG 26  | Back to School                                   | ALCC         |
| 09 SEP 26  | Stewardship - Housing, Barracks, JBLM Facilities | ALCC         |
| 14 OCT 26  | Servicemember Lifecycle                          | McChord Club |
| ~13 NOV 26 | Holiday Resources and Winter Preparedness        | ALCC         |
| 9 DEC 26   | Year in Review and Transitions for 2027          | McChord Club |

**CLIFs are the second Wednesday of each month (1030-1200)**

# Major Events CY25/26

| 1 <sup>st</sup> QTR – CY26  | 2 <sup>nd</sup> QTR – CY26   | 3 <sup>rd</sup> QTR – CY26   | 4 <sup>th</sup> QTR – CY25   |
|---|--|--|--|
| <b>January</b> <ul style="list-style-type: none"> <li>• <b>31 Dec-1 Jan</b> DONSA &amp; Holiday</li> <li>• <b>8,15,22,29 Jan</b> Weekly Food Pantry</li> <li>• <b>15 Jan</b> I Corps 108<sup>th</sup> Birthday</li> <li>• <b>16 &amp; 19 Jan</b> DONSA &amp; Holiday</li> <li>• <b>30 Jan</b> Qtrly Mullet</li> </ul> | <b>April</b> <ul style="list-style-type: none"> <li>• <b>1-30 Apr</b> Month of Military Child</li> <li>• <b>3 &amp; 6 Apr</b> DONSA &amp; Holiday</li> <li>• <b>4 Apr</b> Easter Eggstravaganza / CC's Cup 10-Miler / Gold Star Sp's</li> <li>• <b>6 Apr</b> CYS Closure</li> <li>• <b>24 Apr</b> Qtrly Mullet</li> <li>• <b>25 Apr</b> Kids Fest &amp; Run</li> </ul>   | <b>July</b> <ul style="list-style-type: none"> <li>• <b>3 &amp; 6 Jul</b> DONSA &amp; Holiday</li> <li>• <b>13-17 Jul</b> Vacation Bible School</li> <li>• <b>18 Jul</b> Down &amp; Dirty Mud Run</li> <li>• <b>31 Jul</b> SeaFair Weekend</li> <li>• <b>[T]</b> C-17 Spouse Flight</li> </ul>             | <b>October</b> <ul style="list-style-type: none"> <li>• <b>9 Oct</b> Final JSLO</li> <li>• <b>10 &amp; 13 Oct</b> DONSA &amp; Holiday</li> <li>• <b>16 Oct</b> The Great Shake Out Ex</li> <li>• <b>17 Oct</b> Joint Services Ball</li> <li>• <b>24 Oct</b> Quarterly Mullett</li> <li>• <b>25 Oct</b> Trunk or Treat, Hangar 9</li> <li>• <b>31 Oct</b> Trick or Treat, JBLM Housing</li> </ul>                   |
| <b>February</b> <ul style="list-style-type: none"> <li>• <b>2-11 Feb</b> McChord Readiness Ex</li> <li>• <b>5 Feb</b> Prayer Breakfast / Ret GOFO &amp; Community Advocates</li> <li>• <b>12 Feb</b> SSMCP-ELC</li> <li>• <b>13/16 Feb</b> DONSA &amp; Holiday</li> </ul>   | <b>May</b> <ul style="list-style-type: none"> <li>• <b>3 May</b> Leschi Honor Walk</li> <li>• <b>5 May</b> National Day of Prayer</li> <li>• <b>7 May</b> Educator's Social</li> <li>• <b>11 May</b> Military Spouse Round Table</li> <li>• <b>16 May</b> National Armed Forces Day</li> <li>• <b>21 May</b> Run to Remember</li> <li>• <b>22/25 May</b> DONSA &amp; Holiday</li> <li>• <b>29 May</b> ACES Grad</li> </ul> | <b>August</b> <ul style="list-style-type: none"> <li>• <b>1 Aug</b> Summer Reading Finale</li> <li>• <b>14 Aug</b> Single Service Member Day</li> <li>• <b>23 Aug</b> Back to School Beach Bash</li> <li>• <b>28 Aug</b> CYS Closure (not w/DONSA)</li> <li>• <b>29 Aug</b> DONSA &amp; Holiday</li> </ul> | <b>November</b> <ul style="list-style-type: none"> <li>• <b>8 Nov</b> Wear Blue Veterans Day Run</li> <li>• <b>10-11 Nov</b> DONSA &amp; Holiday</li> <li>• <b>6, 13 &amp; 20 Nov</b> Weekly Food Pantry</li> <li>• <b>15 Nov</b> Winter Expo / Op RIDE HOME</li> <li>• <b>22 Nov</b> Turkey Shoot</li> <li>• <b>22 Nov</b> Qtrly Food Assistance Event</li> <li>• <b>27-28 Nov</b> Holiday &amp; DONSA</li> </ul> |
| <b>March</b> <ul style="list-style-type: none"> <li>• <b>4 Mar</b> AER Kickoff &amp; AER Campaign Week</li> <li>• <b>14 Mar</b> Sham-Rock &amp; Run</li> <li>• <b>21 Mar</b> Spring Forward Run</li> <li>• <b>25 Mar</b> Nat'l Medal of Honor Day</li> <li>• <b>26 Mar</b> Civilian Hall of Fame</li> </ul>           | <b>June</b> <ul style="list-style-type: none"> <li>• <b>4 Jun</b> Vol Recognition Ceremony</li> <li>• <b>10 Jun</b> CLIF / Army Bday Recognition / CPSD Last Day of School</li> <li>• <b>13 Jun</b> Sound to Narrows 12k Run</li> <li>• <b>18 Jun</b> JSLO</li> <li>• <b>26 Jun</b> Retiree Appreciation &amp; DoD Civ Hall of Fame</li> <li>• <b>26-27 Jun</b> Freedom Fest+</li> </ul>                                   | <b>September</b> <ul style="list-style-type: none"> <li>• <b>2-3 Sep</b> Hiring our Heroes</li> <li>• <b>4 &amp; 7 Sep</b> DONSA &amp; Holiday</li> <li>• <b>18 Sep</b> Air Force B-Day</li> <li>• <b>19 Sep</b> McChord Half-Marathon</li> <li>• <b>26 Sep</b> Oktoberfest</li> </ul>                     | <b>December</b> <ul style="list-style-type: none"> <li>• <b>2 Dec</b> Lewis Tree Lighting</li> <li>• <b>4 Dec</b> McChord Tree Lighting</li> <li>• <b>4, 13, 20 Dec</b> Weekly Food Pantry</li> <li>• <b>6 Dec</b> McChord Jingle Jamboree</li> <li>• <b>13 Dec</b> Wreaths Across America / Rudolph 5K / Trees-4-Troops</li> <li>• <b>25-26 Dec</b> Holiday &amp; DONSA</li> </ul>                                |



# JBLM WINTER CHAPEL SCHEDULE

## **Catholic: Various Locations**

Sunday 0900 Mass @ Lewis Main Chapel  
Sunday 1030 Mass @ McChord Chapel #2  
Sunday 1200 Mass @ Lewis Main Chapel  
Weekdays 1200 Mass @ Lewis Main Chapel

## **Jewish: Lewis Main Annex Bldg**

Saturday 1000 Worship Service

## **Buddhist: Lewis Main Chapel**

Sunday 0900 Service

## **Islamic: Soldiers Chapel**

Friday 1215 Dhuhr Prayer Service

## **New Moon Fellowship: BLDG T6195 Lewis**

Sunday 1400 Fellowship

## **Norse Pagan: Four Chaplains Memorial Chapel –**

Rm 118 Sunday 1400 Fellowship

## **McChord Traditional Protestant: McChord Chapel #1**

Sunday 0830 Worship Service

## **Chapel Next: Four Chaplains Memorial Chapel**

Sunday 1000 Worship Service

## **Lewis Main Protestant: Lewis Main Chapel**

Sunday 1030 Worship Service

## **Madigan Chapel Protestant: MAMC Chapel**

Sunday 1030 Worship Service

## **Unplugged: Evergreen Chapel**

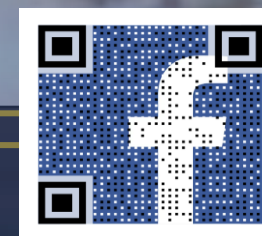
Sunday 1100 Worship Service

## **Grace Gospel: Lewis North Chapel**

Sunday 1100 Worship Service

## **Church of Jesus Christ of Latter Day Saints: Lewis North Chapel**

2<sup>nd</sup>/4<sup>th</sup> Monday 1830 Fellowship







PLEASE JOIN US FOR  
Grace Gospel  
*Thanksgiving  
Outreach*

Food  
Games  
Football

THURSDAY, NOVEMBER 27  
1200-1630

LEWIS NORTH CHAPEL  
11621 SOUTH DR, JBLM

POC: CHAPLAIN TORRES OR CHAPLAIN BLAKE



# OHH

Operation Helping Hands

**For help contact your  
Unit Ministry Team  
or the JBLM RSO at  
520-852-9504**

**Help us help  
our own  
community.**

JOINT BASE LEWIS MCCORD  
RELIGIOUS  
SUPPORT  
OFFICE



**Lend a hand any time.**



1. Scan QR Code
2. Select the dropdown category for "Operation Helping Hands"
3. Enter Payment details

Through this program a family of five can receive up to \$350 for the commissary.





# JBLM Holiday Religious Service Schedule

## Catholic Mass

Nov 27 – Thanksgiving Day  
9:00am Lewis Main Chapel

Dec 8 – Solemnity of the Immaculate Conception  
12:00 noon and 6:00pm Lewis Main Chapel

Dec 24 – Christmas Eve  
4:00pm and 10:00pm, Lewis Main Chapel

Dec 25 – Christmas Day  
9:00am Lewis Main Chapel, 10:30am McChord Chapel

Dec 28 – Feast of the Holy Family of Jesus, Mary, and Joseph

9:00am and 12:00 noon Lewis Main Chapel,  
10:30am McChord Chapel

Jan 4 – Solemnity of the Epiphany  
9:00am and 12:00 noon Lewis Main Chapel,  
10:30am McChord Chapel

Jan 11 – Solemnity of the Baptism of the Lord  
9:00am and 12:00 noon Lewis Main Chapel,  
10:30am McChord Chapel

<https://jblmcath.com/leadership/>



## Wiccan

Dec 21 – 1400

Yule Celebration

New Moon Fellowship

1400 Sunday, BLDG T6195

## Norse Pagans

Dec 21 - 1400

Jublot - Yule Celebration

Four Chaplains Memorial Chapel

Room 118

## Jewish Community

Dec 14 (TBD) Hanukah Celebration

Main Post Chapel Annex

## Protestant Services

Grace Community Thanksgiving Meal Celebration

Thursday Nov 27

12:00 noon – 4:30pm Lewis North Chapel

Candlelight Christmas Eve Services

Dec 24 -5:00pm McChord Chapel

Dec 24 – 6:00pm Four Chaplains Memorial Chapel

## The Church of Jesus Christ

### of Latter Day Saints

Christmas Fellowship

Dec 08 – 6:30pm Lewis North Chapel

Installation Updates

Madigan ACP Closure

- Construction completion estimate MAR 2026

Pendleton Underpass construction

- alternating lanes of traffic 19SEP25-26NOV25

Law Enforcement

Speed Enforcement

- November focus: 41st Division Drive

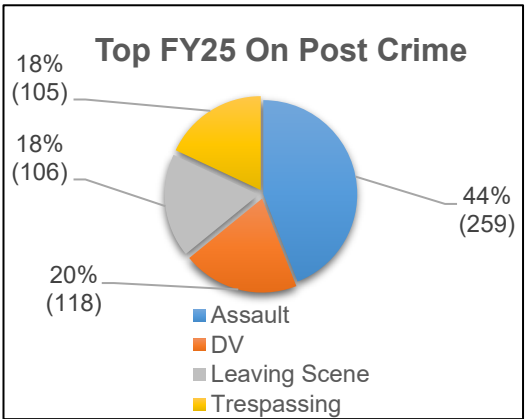
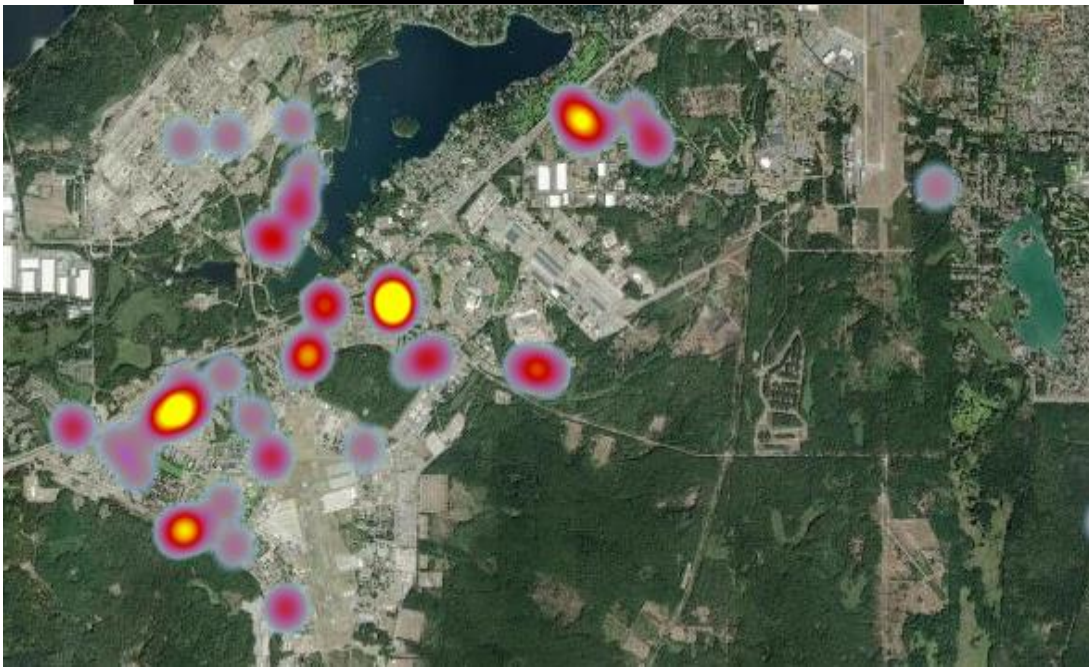
Q4 FY25 Crime Trends

- Common Offenses
  - Assault (73 Total/43 Domestic Violence)
  - Trespassing (28)
- Common Locations
  - New Hillside
  - 41st ACP

Key Takeaways

- Trespassing increased by 18% as compared to FY24. Half of the trespassing incidents occurred in training areas with citations issued.
- Increase in vehicle accidents due to wet conditions and decreased visibility

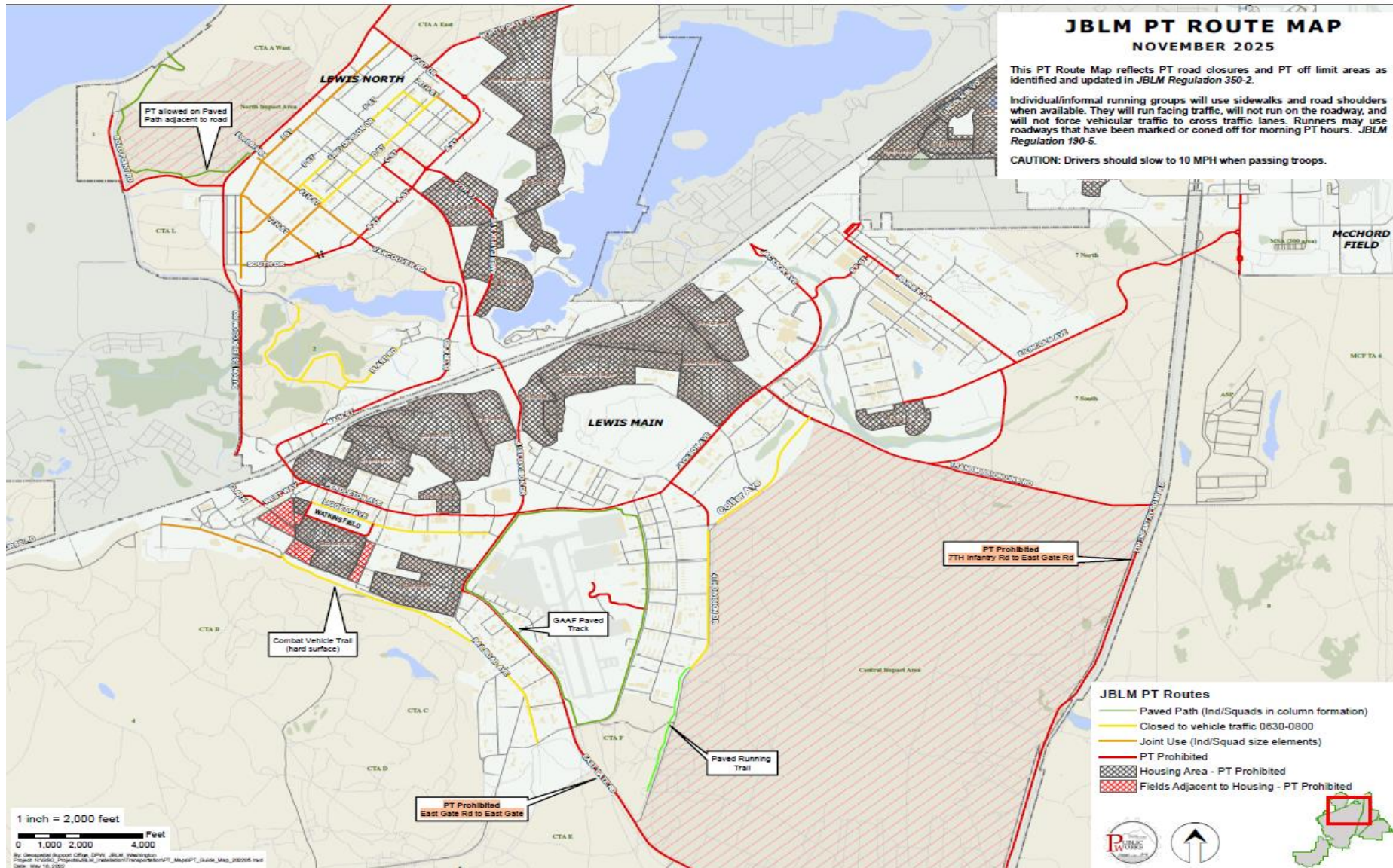
4QTR FY25 Assaults/ Domestic Violence



| November ACP Hours |                         |
|--------------------|-------------------------|
| Gate               | Status                  |
| Integrity          | Closed Federal Holidays |
| Dupont             | Closed Federal Holidays |
| RCF                | Closed Federal Holidays |







- Barriers closing the safe/secure routes are in place from 0630-0800.
- During hours of limited visibility, DES strongly recommends units use PT belts or other reflective material.
- This PT route map reflects PT road closures and PT off limit areas as identified and updated in **JBLM Reg 350-2, Chapter 2. Paragraph 2-3.**
- Individual/informal running groups will use sidewalks and road shoulder when available. They will run facing traffic, will not run on the roadway, and will not force vehicular traffic to cross traffic lanes. Runners may use roadways that have been marked or coned off for morning PT hours. JBLM Reg 190-5.
- Drivers should slow to 10 MPH when passing troops.

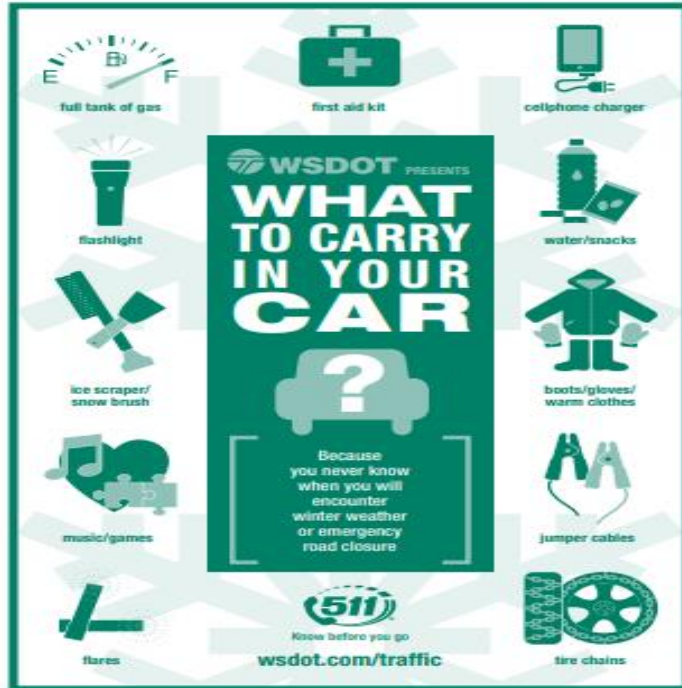
# PT not authorized on East Gate Rd











## WINTER TRAVEL: PREPARE, EQUIP, FILL UP

Winter travel can be tough on you and your car. Are you prepared? Make sure you:

- Get a winter maintenance check-up. Check your tires, battery, belts, hoses, radiator, lights, brakes, heater/defroster and wipers.
- Talk to your tire dealer about which tires are the best match for your car and your travel.
- Fill up your gas tank before heading out, so you'll have plenty of gas if delayed in a road closure.

## WINTER TRAVEL: ON THE ROAD

- Carry chains. Find out which chains (includes cable chains), or approved alternatives, fit your vehicle and practice installing them.
- Studded tires do NOT meet the chain requirement. Even vehicles equipped with studded tires need to carry chains in winter conditions.



## STUDED TIRE INFORMATION

Washington only allows studded tires from Nov. 1 through March 31. There is no individual exception to the studded tire dates and violators face a \$136 fine. WSDOT may extend the deadline if forecasts indicate severe winter weather conditions are likely across much of the state.

## DRIVING IN SNOW AND ICE

- Slow down and drive for conditions.
- Turn on headlights.
- Focus on driving. Don't use cruise control.
- Leave extra room between vehicles.
- Slow down when approaching intersections, off-ramps, bridges or shady spots.
- Snowplow drivers have a limited field of vision. Stay back 15 car lengths until you're sure it is safe to pass or until the plow pulls off the road.
- Obey chain up notices - violators face a \$500 fine. Many pass closures are due to slide outs from drivers without proper equipment.
- Not confident about your vehicle or winter driving skills? Consider delaying travel plans.





## WHAT DO TRACTION ADVISORIES MEAN?

### Traction Tires Advised:

Oversize loads prohibited from roadways. Commercial Vehicle Services and load information: [wsdot.wa.gov/commercialvehicle](http://wsdot.wa.gov/commercialvehicle)

TRACTION  
TIRES  
ADVISED

### Traction Tires Required:

All passenger vehicles must have approved traction tires.\* Chains required on all vehicles with a gross vehicle weight rating greater than 10,000 pounds, including large passenger trucks, SUVs and RVs.

TRACTION  
TIRES  
REQUIRED

### Tire Chains Required:

All vehicles must have approved tire chains, except four- and all-wheel-drive vehicles.\*\* Violators face a \$500 fine.

TIRE  
CHAINS  
REQUIRED

### Chains Required On All Vehicles:

During extreme weather, **ALL** vehicles must install chains when this is posted — even 4WD/AWD.

CHAINS  
REQUIRED  
ON ALL  
VEHICLES

Anyone traveling through high elevations or winter conditions should carry chains in their vehicle. When weather conditions are extreme, **ALL** vehicles may be required to install chains — even 4WD/AWD. Studded tires do not meet chain requirements.

\* **Approved traction tires** must have at least an eighth of an inch of tread and be labeled M+S, All Season, or have a Mountain/Snowflake symbol. These tires can be used all year. When you install approved chains, any tire becomes a traction tire. For more information on traction tire options, contact your local tire dealer.



\*\* 4WD and AWD must still **CARRY** chains during this advisory level or face a violation and fine.  
(Washington Administrative Code 204-24-050)

## KNOW BEFORE YOU GO: Subscribe, Follow, Listen



Download the WSDOT app or subscribe to email or text alerts: [wsdot.wa.gov/inform](http://wsdot.wa.gov/inform)

- Follow WSDOT social media accounts: [wsdot.wa.gov/inform](http://wsdot.wa.gov/inform)
- Program your radio to WSDOT's Highway Advisory Radio: **530 AM** and **1610 AM**
- WSDOT Winter Info.: [wsdot.com/winter](http://wsdot.com/winter)
- WSDOT Newsroom: [wsdot.wa.gov/news](http://wsdot.wa.gov/news)
- Mountain Pass Reports:  
Online: [wsdot.com/traffic/passes](http://wsdot.com/traffic/passes)  
Twitter: [@wsdot\\_passes](https://twitter.com/wsdot_passes)
- Cameras & Traffic Alerts: [wsdot.com/traffic](http://wsdot.com/traffic)
- Weather: [wsdot.com/traffic/weather](http://wsdot.com/traffic/weather)



# Installation Reception Center Opportunity / Holiday Block Leave Procedure

- Courage Cares block of instruction will not occur during Opportunity Leave Period (22DEC and 29DEC).
- Soldiers will conduct Days 1-3 inprocessing during duty days from 22DEC-24DEC and 29DEC-31DEC on a full-day schedule.
- Soldiers who are inprocessing-complete after Friday 19 December, will not ship until Monday 5 January.
- Soldiers will not be eligible to ship from IRC to their unit, unless requested by-name from the Rear-D leadership to facilitate mission-critical requirements (e.g. ROK load-out for 2-2 SBCT).
- IRC will coordinate with gaining Company leadership to secure Absence Approval for these in-processing hold-over Soldiers to allow the opportunity to visit home for the holidays. **IRC is not authorized to approve any absence without gaining unit concurrence.**
- IRC Leadership is building in-house events and leveraging MWR and Boss events for our Inprocessing Soldiers who are not returning to family during the holidays due to insufficient accrued leave or financial constraints.



# GETTING THE FLU VACCINE

JBLM Community,

It's that time of year again! Time to get your flu shot! This year, we have **3 Fantastic Options** to make it easy for you and your family to get the flu vaccine. Just pick the one that works best for you and your loved ones! Don't let the flu stop you! Let's keep everyone healthy---get vaccinated and protect your family from the flu!

## THERE ARE **3 OPTIONS** FOR GETTING THE FLU VACCINE



**UPDATED!!!!**

### **1** COMMUNITY OUTREACH FLU VACCINATION EVENTS

All TRICARE Beneficiaries **6 months or older**

Madigan Army Medical Center  
Medical Mall  
Ground Floor  
**Nov 21 & 22**  
8 am - 3 pm



ELIGIBLE BENEFICIARIES MUST HAVE A VALID DOD ID CARD TO RECEIVE A FLU SHOT  
IS YOUR CHILD TOO YOUNG TO HAVE A DOD ID CARD? NO PROBLEM, PROVIDE THEIR DOD ID OR SOCIAL SECURITY NUMBER TO GET THE VACCINE

### **2** PARTICIPATING TRICARE COVERED RETAIL PHARMACY

You can also get your vaccine from your local pharmacy at no cost:

1. Check Participating Network Pharmacies at <https://militaryrx.express-scripts.com/find-pharmacy>
2. Or you can call ahead to confirm that your pharmacy is in the TRICARE network

### **3** MILITARY TREATMENT FACILITIES OR CLINICS

Available to All TRICARE Active Duty and Civilian beneficiaries. Call ahead to your assigned clinic to confirm if the FLU VACCINE is available.

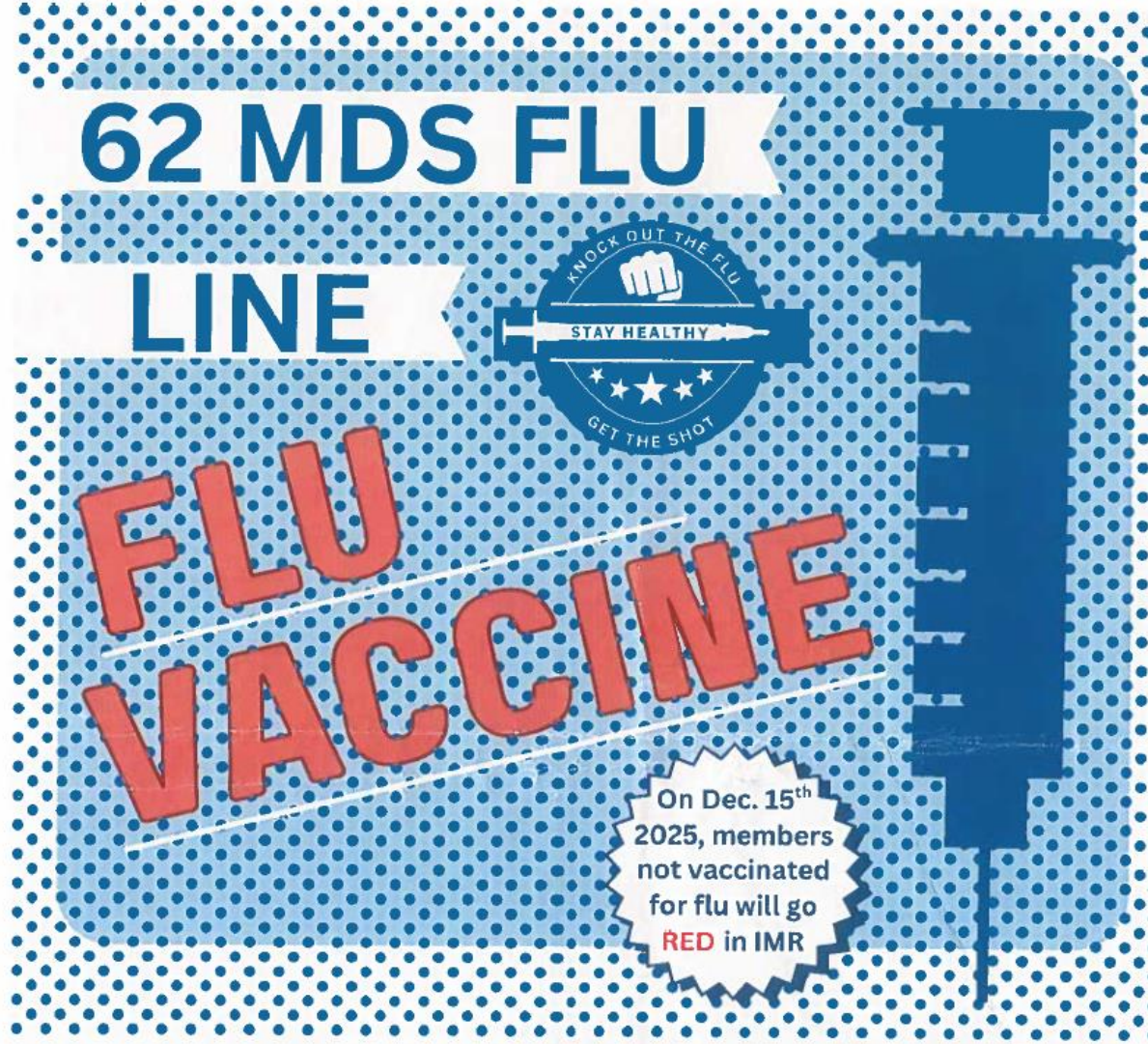


**\*FOR YOUR RECORDS\***

WHEN YOU GET A FLU VACCINE FROM A PARTICIPATING NETWORK PHARMACY OR A TRICARE AUTHORIZED PROVIDER, FOLLOW YOUR SERVICE POLICY GUIDANCE FOR RECORDING THE VACCINE IN YOUR SHOT RECORD.



# McChord Flu Vaccination Option



**62 MDS FLU  
LINE**

**FLU  
VACCINE**

**KNOCK OUT THE FLU  
STAY HEALTHY  
GET THE SHOT**

On Dec. 15<sup>th</sup>  
2025, members  
not vaccinated  
for flu will go  
**RED** in IMR

| DATES                       |   | For <u>ALL</u> Active Duty<br>& GS personnel not<br>yet vaccinated for<br>the 2025-2026 flu<br>season |
|-----------------------------|---|---|
| THURSDAY- NOV. 6TH          | 2 |   |
| WEDNESDAY- NOV. 12TH        | 0 |   |
| MONDAY- NOV. 17TH           | 2 |   |
| 5                           |   |   |
| MCCHORD THEATER   0800-1600 |   |   |





## **WE SUPPORT POPULATIONS** Installation-wide:

- Active Duty
- National Guard
- Reserve
- DA Civilians
- Family members





# Navigating Holiday Challenges with Mental Performance Tools

## Common Challenges

- Loneliness or feeling disconnected
- Increased stress and anxiety
- Disrupted routines
- Missing time with family / being away
- Challenging family dynamics

## Mental Performance Tools

- Gratitude Practices
  - Notice 3 good things about your day and reflect on WHY they mattered
- Self-Regulation Routine
  - Pause      Deliberate Breathing  
    ➡
- Cognitive Reframing
  - Catch unhelpful thoughts and ask, “What else could be true?”
- Values-Based Intention Setting
  - Identify core value(s) and set daily actions that align with that value

# R2PC CONTACT INFORMATION

**Main Office Phone:** (253) 968 – 7642

**Want to visit us?** Use Google Maps & search JBLM R2 for the best results.



@jblmr2pc



JBLM R2 Performance  
Center

\*The R2 team is also available for TDY training as well as providing training outside the normal business hours.



# American Red Cross Impacts Lives Every Day

Service to the Armed Forces and International Services

Every  
**8 minutes**  
the Red Cross  
responds to a  
disaster in the  
community



**170**  
times a day, Red  
Cross  
workers help a  
family  
affected by a  
home fire  
or other disaster.



**1,500**  
times a day, we  
provide  
services to  
military  
members,  
veterans and  
their families.



**40%**  
Of America's  
blood supply  
comes from  
the Red Cross



**17,000**  
times a day, a  
person  
receives  
lifesaving  
Red Cross  
training



**570,000**  
times a day, a child  
receives a measles  
or rubella  
vaccination from  
the Red Cross and  
our partners.



# American Red Cross Programs & Staff

## Programs

- Hero Care Casework
- Outreach
- Resiliency
- Healing Arts
- International Humanitarian Law
- Restoring Family Links
- Youth Action Campaign
- Military treatment facilities
- Veteran Services

## Staff

- **Will Willis- Regional SAF/IS Director**
- **Emily Woodford- Regional SAF/IS Program Manager**
- **Pell Kennedy- Regional SAF/IS Program Specialist**
- **Kris Horsley- Regional SAF/IS Program Manager**
- **Mariana Bellinger-Regional SAF/IS Program Specialist**







**ARMED SERVICES YMCA PACIFIC NORTHWEST  
HOLIDAY TRAVEL ASSISTANCE FOR E1-E5 MILITARY FAMILIES**

Reconnecting military families with their loved ones during the holidays.

ASYMCA and Jack Daniel's Operation Ride Home is open to E1-E5 military households from all six service branches who are on active duty or reserve status based at an installation in Washington State. Assistance in the forms of airline tickets or gift cards may be awarded to eligible single and married service members, military spouses, and direct dependent children ages 0-18 who might not otherwise have the full financial means to travel home for the holidays.

VISIT, APPLY, OR DONATE AT:  
[ridehome.asymca.org](http://ridehome.asymca.org)



2025 APPLICATION PERIOD:  
**Sept 15 – Nov 15**

----- **CELEBRATING 15 YEARS** -----

Since the inception of Jack Daniel's Operation Ride Home in 2011, the Armed Services YMCA and Jack Daniel's have:



reconnected 14,361 junior-enlisted service members, spouses and their children with loved ones.



served families from the Army, Marine Corps, Navy, Air Force, Space Force and Coast Guard.



provided travel assistance to send military families home to all 50 states and around the world.

# ASYMCA



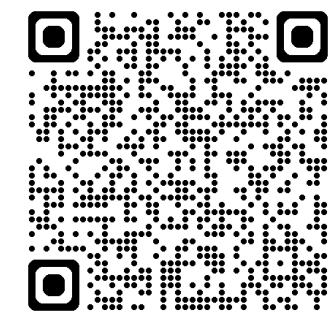
U.S. AIR FORCE

## Three Days Left to Apply!

Accepting applications 15 Sep – 15 Nov  
2025 YTD Applications Received: 229

ASYMCA & Jack Daniels Operation Ride Home is open to E1-E5 military households from all six service branches who are on active duty or reserve status based at an installation in Washington State. Assistance in the forms of airline tickets or gift cards may be awarded to eligible single and married service members, military spouses, and direct dependent children ages 0-18 who might not otherwise have the full financial means to travel home for the holidays.

[Scan QR Code to access Application](#)



## MAMC Children's Waiting Room Hours

Monday/Wednesday: 8am-3pm

Tuesday/Thursday: 7:30am-2pm

Fridays: 8am-1pm

## MAMC Children's Waiting Room Usage

Average Monthly Appointments: 254

Children Registered: 733

Total Families Served: 433

Total Appointments: 2621

[pacificnw.asymca.org](http://pacificnw.asymca.org)









# Grand Opening

Friday, 31 October  
in your McChord  
Exchange Mall



*Complimentary Samples  
and Specials!*

- \$1 Off Cake Slices
- \$1 Off Granola
- \$1 Off Candied Nuts
- \$1 Off Banana Pudding
- 20% Off Cupcakes

Open  
Tuesday-Saturday  
1000-1700 hrs.



Sweet Confections NOW OPEN  
at your McChord Vendor Mall



# NOVEMBER EVENTS

| SUNDAY   | MONDAY  | TUESDAY  | WEDNESDAY   | THURSDAY   | FRIDAY   | SATURDAY  |
|--|---|--|---|--|--|---|
| <b>Lewis Exchange</b><br>Open 0800-2130 hrs.<br>Monday-Friday<br>0900-2130 Sat & Sun<br><br><b>McChord Exchange</b><br>Open 0900-1900 hrs.<br>Monday-Saturday<br>1000-1800 Sunday<br>shopanyexchange.com<br>Open 24 hours! | <b>SAVE BIG THIS SEASON WITH MILITARY STAR.</b><br><br><b>ROYAL CANIN LIFESOURCE PET FOOD PROMOTION</b><br>Take an extra 10% off w/ MILITARY STAR.<br>Nov. 12/25<br><br><b>SOFTLINES PROMOTION</b><br>Take an extra 10% off clothing, coats, shoes, fine jewelry, fashion jewelry, handbags, watches and luggage.<br>w/ MILITARY STAR.<br>11/21-11/23<br><br><b>FURNITURE &amp; MATRESS PROMOTION</b><br>Take an extra 10% off 36 months, \$500 or more w/ MILITARY STAR.<br>Nov. 12/25<br><br><b>SOFTLINES PROMOTION</b><br>Take an extra 10% off 12 months on any fine jewelry, watches, handbags and handbags purchases of \$400 or more w/ MILITARY STAR.<br>Nov. 12/25 | <b>SALUTE TO * SERVICE</b><br><br>The Exchange is recognizing Veterans' service and sacrifice during a monthlong Salute to Service tribute with in-store celebrations and giveaway events for active-duty military, reserves and veterans with in-store shopping benefits.<br><br>Pops are back! Collectible 1-cent pops feature imagery for the various branches of service with veterans coin giveaway.<br>Select locations - 11/1 and 11/29<br><br>Veterans day commemorative coin giveaway 11/11 (Alternate Date 11/8)<br><br>"Vet for life," clinical giveaway - 11/15<br><br>"Vet for life" collectible patch giveaway - 11/22 | <b>FREE 1 Family Event!</b><br><b>1200-1500 hrs.</b><br><br><br><br><b>Build-and-Take a LEGO® Play &amp; Play game Home Game!</b><br><br>at Lewis & McChord Main Exchange | <b>PAPA JOHN'S</b><br>2<br>35% OFF<br>REGULAR MENU PRICE<br>PIZZAS<br>11/1 thru 11/20<br><br><b>BUNKER 27</b><br>3<br>FINELY CRAFTED APPAREL<br><b>November Raffle!</b><br>Answer 4 fun questions about our brand for your chance to win a Bunker 27 shirt.<br>1 Patch, 1 Shirt, 1 Hoodie, 1 Hat & 1 Backpack<br>Win it all at Lewis Exchange Mall to enter thru Nov. 23<br><br><b>POPEYES</b><br>4<br>Cajun-Style Turkey<br>Thank, Share, Serve, Enjoy!<br>\$59.99 at Lewis North<br>Deal Foods and McChord Food Court<br><br><b>Auntie Anne's</b><br>5<br>2 for \$8<br>Full Size<br>Pretzels or<br>Pretzel Dogs<br>Everyday in Nov!<br><br><b>Starbucks</b><br>6<br>Holiday Menu<br>Launch featuring<br>Festive Drinks &<br>Hello Kitty<br>Merchandise<br>at Lewis & McChord<br>Exchange Mall Starbucks<br><br><b>WINE PROMOTION</b><br>7<br>Wine offer, buy 12 or more<br>bottles and save 20%<br>w/ MILITARY STAR.<br>11/7-11/28<br><br><b>SPORTING GOODS PROMOTION</b><br>8<br>10 percent + no payments for<br>12 months on sporting goods<br>purchases \$300 or more<br>w/ MILITARY STAR.<br>11/7-11/27<br><br><b>ELECTRONICS PROMOTION</b><br>9<br>0% interest + no payments for<br>12 months on electronics<br>purchases \$300 or more<br>w/ MILITARY STAR.<br>11/7-11/27<br><br>* For more details starting 11/7,<br>see store for details. | <b>PARSONS VINTAGE</b><br>8<br>HANDMADE & MISCELLANEOUS<br><br>FREE!<br>Gift with \$100 or more<br>purchase,<br>while supplies last.<br>at Lewis & McChord<br>Main Exchange<br>11/8 thru 11/22 | <b>CELEBRATE VETERANS</b><br>9<br>All 3-Wick<br>Candles<br>\$14.95<br><br>Bath & Body Works<br>at Lewis & McChord<br>Main Exchange<br>11/7 thru 11/13<br><br><b>MARINE CORPS BIRTHDAY PROMOTION</b><br>10<br>Earn double points<br>on any purchase<br>w/ MILITARY STAR.<br>Today In-Store Only!<br><br><b>VETERANS SALE</b><br>11<br>10% OFF<br>Food at participating<br>Exchange restaurants<br>w/ MILITARY STAR.<br>Cupons required<br>11/7 thru 11/27<br><br>\$10 OFF<br>Exchange merchandise<br>or food purchase of \$25<br>w/ MILITARY STAR.<br>11/7 thru 11/27<br><br>10% OFF<br>Per gallon of gas<br>w/ MILITARY STAR.<br>11/7<br><br><b>DOUBLE POINTS</b><br>12<br>Earn double points on<br>MILITARY STAR purchases<br>11/7 thru 11/27<br><br><b>CLOTHING &amp; ACCESSORIES PROMOTION</b><br>13<br>Take an extra 10% off clothing,<br>coats, shoes, fine jewelry, fashion<br>jewelry, watches, handbags and<br>personal accessories<br>w/ MILITARY STAR.<br>11/7 thru 11/27<br><br><b>MOBILE CENTER</b><br>16<br>BUY MORE<br>SAVE MORE!<br>BUY 3 ACCESSORIES<br>GET \$10 OFF<br>BUY 4 ACCESSORIES<br>GET \$20 OFF<br>BUY 5 ACCESSORIES<br>GET \$30 OFF<br>Located inside Lewis &<br>McChord Exchange<br><br><b>QDOBA</b><br>19<br>WE CATER<br>DELIVERY & SET UP<br>★ EVENTS<br>★ PARTIES<br>★ MEETINGS<br>Visit QDOBA in the<br>McChord Exchange<br>Food Court<br><br><b>JOJA'S</b><br>20<br>20% OFF<br>All Flower<br>and Plant<br>Purchases!<br>11/20 thru 11/26<br>Located at Lewis Exchange Mall<br><br><b>SOFTLINES PROMOTION</b><br>21<br>Take an extra 10% off<br>clothing, coats, fine<br>jewelry, fashion jewelry,<br>watches and handbags<br>w/ MILITARY STAR<br>11/21 thru 11/23<br><br><b>HOLIDAY GIFT SET PROMOTION</b><br>22<br>Take an extra 10% off<br>select gift sets<br>w/ MILITARY STAR<br>11/21 thru 11/23<br>Located at McChord Exchange Mall<br><br><b>Firestone</b><br>23<br>\$2000<br>OR MORE<br>WITH<br>MILITARY<br>STAR<br>thru 12/31<br><br><b>Share Your Favorite Holiday Story</b><br>24<br>WIN A \$1,000<br>SHOPPING SPREE!<br>Enter thru 12/23 at<br>sweepstakes@afes.com<br><br><b>DEEP FRIED TURKEY</b><br>26<br>Cable into us today<br>at Lewis Exchange<br>Food Court<br><br><b>U.S. PATRIOT STUFF YOUR BAG PROMOTION</b><br>27<br>20% OFF A<br>DEPLOYMENT BAG<br>AND ANYTHING<br>YOU CAN FIT IN IT!<br>11/28 thru 12/24<br>Located at Lewis North, Lewis Main<br>& McChord Exchange Mall<br><br><b>Black Friday</b><br>28<br>15% OFF<br>Per gallon of gas<br>w/ MILITARY STAR.<br>11/28<br><br><b>DOUBLE POINTS</b><br>29<br>11/28 thru 11/29<br><br><b>WEEKEND DEALS!</b><br>30<br>15% OFF<br>Any food at participating exchange<br>restaurants w/ MILITARY STAR.<br>11/27 thru 11/29<br><br><b>FINANCE OFFER</b><br>31<br>0% + no payments for 6 months<br>w/ MILITARY STAR or more<br>w/ MILITARY STAR.<br>11/27 thru 11/27<br><br><b>CLOTHING &amp; ACCESSORIES PROMOTION</b><br>32<br>Take an extra 10% off clothing, coats,<br>shoes, fine jewelry, fashion jewelry,<br>watches and handbags<br>w/ MILITARY STAR.<br>11/27 thru 11/27 |




  
**EXCHANGE**
  

## SALUTE TO SERVICE

One day is not enough! The Exchange is honoring active-duty service members, retirees and disabled Veterans with special in-store giveaways in November.

If you are serving on active duty or a Veteran with in-store shopping privileges at your PX or BX, join us on these dates to receive your keepsakes:

Nov. 1 and Nov. 29: Collectible penny POG

★

Nov. 11: Challenge coin

★

Nov. 15: Veteran for Life decal

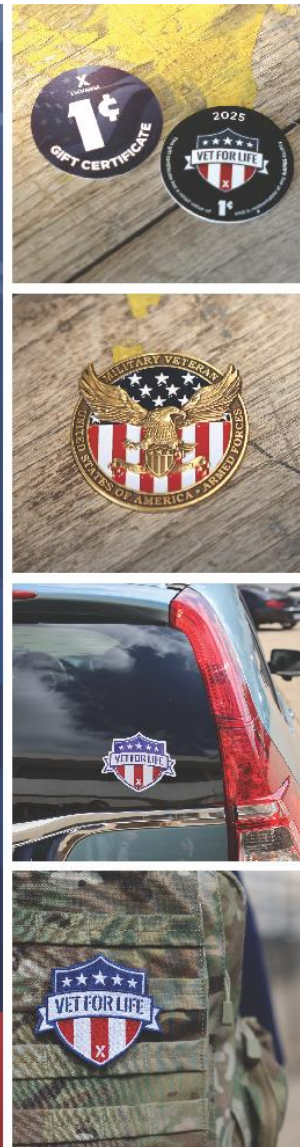
★

Nov. 22: Veteran for Life patch



Scan to learn more about our Veterans giveaways or visit us at [SHOPMYEXCHANGE.COM/SALUTETOSERVICE](https://shopmyexchange.com/salutetoservice)

**LEARN MORE ABOUT SHOPPING BENEFITS AT**  
**[SHOPMYEXCHANGE.COM/VETS](https://shopmyexchange.com/vets)**



## JBLM Veterans Month Events

- **McChord Exchange**
  - 11 Nov Challenge Coin 0900-1000
  - 15 Nov Decal 1200-1500
  - 22 Nov Patch 1100-1300
  - 29 Nov POG 1100-1300
  
- **Lewis Exchange**
  - 11 Nov Challenge Coin 1100-1200
  - 15 Nov Decal 1100-1300
  - 22 Nov Patch 1100-1300
  - 29 Nov POG 1200-1300

| 27   | 28   | 29  |
|--|--|---|
| <b>Black Friday WEEKEND DEALS!</b>   |  |   |
| <b>10¢ OFF</b><br>Per gallon of gas w/ MILITARY STAR <sub>®</sub><br>11/28 | <b>15% OFF</b><br>Any food at participating Exchange restaurants w/ MILITARY STAR <sub>®</sub><br>11/27 thru 11/30   | <b>FINANCE OFFER</b><br>0% + no payments for 6 months on Purchase of \$299 or more. w/ MILITARY STAR <sub>®</sub><br>11/27 thru 12/1  |
| <b>DOUBLE POINTS</b><br>11/27 thru 12/1                                    | <b>\$10 OFF</b><br>Any Exchange concession or kiosk purchase of \$25+ w/ MILITARY STAR <sub>®</sub><br>Coupon required. See store associate for coupon<br>11/27 thru 11/30<br>w/ MILITARY STAR <sub>®</sub><br>11/27 thru 12/1 | <b>CLOTHING &amp; ACCESSORIES PROMOTION</b><br>Take an extra 10% off clothing, coats, shoes, fine jewelry, fashion jewelry, watches and handbags w/ MILITARY STAR <sub>®</sub><br>11/27 thru 12/1 |
| <b>THANKSGIVING DAY</b>  |  |   |





# BOOK SIGNING EVENT



with **Robert J. Shano, MSGT (Ret.)** author of  
**Never Too Old For War**  
Everything you need to know about leadership and  
counseling and MUCH MORE!

**November 15-21**  
**1100-1400**

## NEVER TOO OLD FOR WAR

Reviewed by Lt. Col. Robert J. Shano, U.S. Army (Ret.)  
**Robert J. Shano, Master Sgt. (Ret.)**



At your **McChord Field Exchange** 

**A**t age fifty, Vietnam-era veteran Bob Shano, enraged by the terrorist attacks on September 11, 2001, signed back up to serve as an infantryman in the United States Army. Over the eleven years that followed his return to duty, Shano completed three combat tours in support of the Global War on Terror before being mandatorily retired at age sixty-two on June 30, 2013. His first tour took him to Iraq, where he actively took part in the search for weapons of mass destruction. He deployed to Afghanistan for his second tour, where he served as an advisor for the Afghan border police, national police, and national army. For his third and final combat tour, he returned to Iraq, this time as a member of an Army Stryker Brigade Combat Team. A native of New York City, for Shano this war would not be a war of attrition, as it had been labeled by some of the Brass and members of the Press. It would be a war of retribution.

Beauty Event 15 Nov 25



**Holiday & Mistletoe Wishes & Kisses**  
Semi-annual Beauty Event  
Saturday, Nov. 15, 2025  
11:00am-2:00pm

# 35% OFF

**REGULAR MENU PRICE PIZZAS**

**PAPAJOHNS®**

**WE DELIVER TO THE ENTIRE INSTALLATION**  
**LOCATED IN 1<sup>ST</sup> BRIGADE FOOD COURT, BLDG. 3746**



Papa Johns Special!

For gift wrapping fundraisers at the Exchange contact:  
[usarmy.jblm.id-readiness.mbx.dfmwr-private-organizations@army.mil](mailto:usarmy.jblm.id-readiness.mbx.dfmwr-private-organizations@army.mil)

Be on the lookout for our donation partners this season:

- Santa's Castle
- Star Tree
- Angel Tree
- Check us out on Facebook & Instagram!  
<https://www.facebook.com/JBLMExchange>  
<https://www.instagram.com/jblmexchange/?hl=en>





Visit your Commissary today, it's worth the trip!

- During the Government Shutdown, the Defense Commissary Agency will continue full operation of all 235 commissaries for up to 60 days or until all DeCA defense working capital funds are exhausted.
- Lewis Main/McChord Commissaries are supporting the HAP this Thanksgiving holiday with turkeys and food donation bags, as an ongoing effort to support food insecurities within the military community.
- Lewis Main/McChord Commissaries will be operating regular business hours on 26 November, closed 27 November in observance of Thanksgiving holiday, and will re-open regular business hours 28 November.
- Fresh turkeys will be available for purchase at both commissary locations beginning 17 November.
  - Never too early to place special orders, get your orders in soon!
  - Holiday plants/foliage, wine, specialty baked goods, international holiday items, and much, much, much more now available at your local Commissary!

|               | Thanksgiving Day | Black Friday | Christmas Eve | Christmas Day | New Years Eve | New Years Day |
|---------------|------------------|--------------|---------------|---------------|---------------|---------------|
| Lewis Main    | CLOSED           | 0800-2000    | 0800-1600     | CLOSED        | 0800-2000     | CLOSED        |
| McChord Field | CLOSED           | 0800-2000    | 0800-1600     | CLOSED        | 0800-2000     | CLOSED        |



## USO TRANSITION PROGRAM

# NOVEMBER 2025

### FREE ONLINE WEBINARS

- November 6th | 2pm HST
  - Stand Out as a Professional on LinkedIn
- November 13th | 6am HST
  - Federal Resume Workshop
- November 18th | 6am HST
  - U.S. Secret Service Career Opportunities
- November 19th | 2pm HST
  - MILSpouse Fill the Gaps
- November 20th | 2pm HST
  - Mastering LinkedIn Workshop
- November 25th | 2pm HST
  - SkillBridge Info Session



FOR THE PEOPLE WHO SERVE.™

## ADVANCE YOUR CAREER...

at every stage of your  
military journey.



Contact a USO Transition  
Specialist for FREE  
personalized support!

[USO.org/ServiceMemberSupport](https://USO.org/ServiceMemberSupport)

## USO TRANSITION PROGRAM

The USO is a not-for-profit organization and not part of the Department of Defense (DOD).



Event registration: [uso.org/transition](https://uso.org/transition)



# USO Holiday Events

## USO Lewis Main:

- November 19th: Thanksgiving Luncheon
- December 17th: Coffee Connections

## USO Shali- McChord:

- November 20th: Thanksgiving Luncheon
- December 6<sup>th</sup> : Grinch Pancake Breakfast
- December 10<sup>th</sup> : Crafternoon
- December 13th: Painting with Santa
- December 17th: Holiday Luncheon
- 

## Join USO Event:

- November 15th: JBLM Special Delivery Baby Shower
- All events plus registration links are found at: [USO Northwest](https://www.uso.org/northwest)

Units can submit support requests here: [Washington Outreach and NAS Whidbey Island • USO Northwest](#)







### THANKSGIVING LUNCHEON

USO SHALI-MCCHORD AFB



Join USO Shali on McChord AFB for a taste of home this Thanksgiving!

Serving begins at 1100 - until the food runs out!


[USO.org/HOLIDAYS](https://www.uso.org/HOLIDAYS)



### GRINCH PANCAKE BREAKFAST

SATURDAY, DECEMBER 6<sup>TH</sup> @ 0800



Kick off the Holiday's with a delicious breakfast and family fun game of Grinch Bingo!

Advanced Registration Required



**REGISTER HERE**



### PAINTING WITH SANTA!

DECEMBER 13<sup>TH</sup> @ 10AM, 12PM, OR 2 PM



Come join USO Shali on McChord AFB for a fun-filled day of painting, yummy treats, and even a visit from Santa Claus himself! Event registration is required.

**REGISTER HERE**



# Weather Delayed Reporting/Early Release

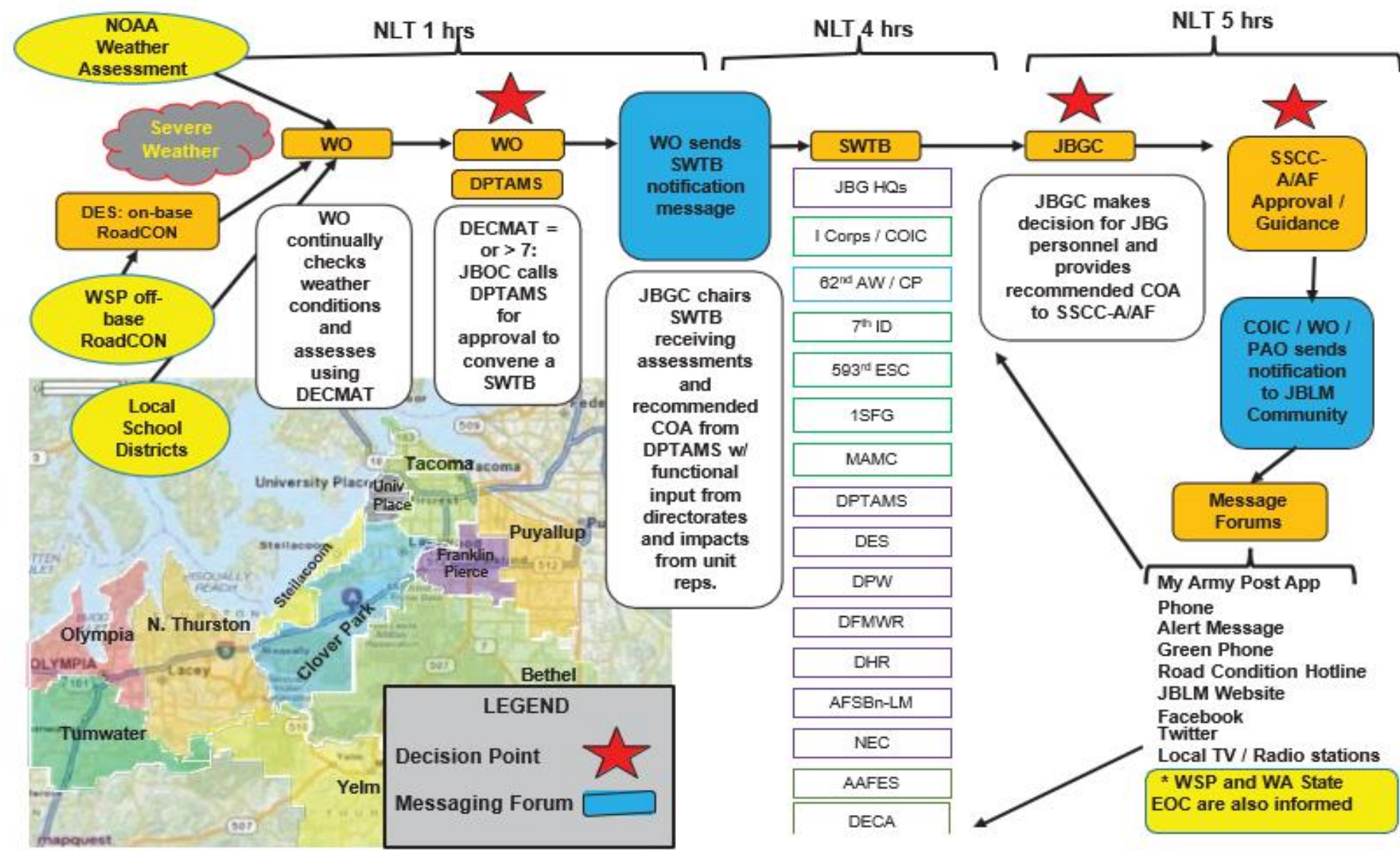
- Joint Base Garrison (JBG) Commander convenes the Severe Weather Threat Board (SWTB)
- Based on the SWTB review, one of three determinations will be made JBLM Never fully shuts down due to its mission
  1. To take caution while commuting
  2. Up to two-hour delay in reporting/early release for non-mission critical employees (telework authorized where permissible)
  3. Mission critical employees only
- JBG Commander recommends to the Senior Commanders, I Corps and the 62D Airlift Wing, for approval
- A weather-related message is then transmitted via the ALERT, AD-HOC, and MAPA.







# Severe Weather Info Flow & Dependency Chart



## My Army Post App

- QR at right

## ALERT

- <https://alert.csd.disa.mil> (login with CAC)

## Road Conditions Hotline

- AM 1710

## JBLM Webpage

- <https://home.army.mil/lewis-mcchord/>

## Facebook

- <https://www.facebook.com/JBLewisMcChord/>

## X / Twitter

- [https://x.com/JBLM\\_PAO](https://x.com/JBLM_PAO)

## WickrGov (internal)

- QR at right



The advertisement for the My Army Post App features two smartphones. The background phone displays a 'Welcome to USAG Italy' screen with a list of services: Active Duty, Active Duty, Contract, DA Civilian, and The Garrison. The foreground phone displays a weather and air quality screen for 54°F, with a '74 AQI' and 'Moderate' air quality. It also shows a 'Del Din Pool Opens!' event for February 3, 2025. To the right of the phones, the text 'AVAILABLE NOW MY ARMY POST APP' is prominently displayed. Below this, a list of app features includes: Installation Services, Gate Hours, Community Events, Important Notifications, and Newcomers Information. At the bottom right, there are icons for Google Play and the App Store, along with a QR code. Three circular logos are at the top right: the 1st Cavalry Division, the 62nd Air Support Operations Squadron, and the 62nd Air Support Operations Squadron.



# LIBERTY SNOW & ICE REMOVAL PLAN

If ice or snow accumulations are imminent, Liberty staff will be on standby to respond if the weather affects our community roads.

We will monitor local news as well as the Joint Base Hotlines. Staff will additionally respond to reports directly provided by JBLM Military Police.

We will have a phased plan with two sanding/ plow trucks to address the conditions, focused on the most critical areas with hills and major intersections. Liberty will not be plowing and/or sanding any side streets to focus our attention on these areas.

It is the resident's responsibility to perform snow/ice removal at their individual homes.



**McChord Field - Phase 1 - Truck 1**  
**Lewis East, Disco, North - Phase 2 - Truck 1**  
**Lewis West - Phase 1 - Truck 2**  
**Lewis Main - Phase 2 - Truck 2**

**LIBERTY**  
MILITARY HOUSING





Liberty Military Housing Presents

# Upcoming **November** Events

**NOV  
4th**

11am - 12pm

## Little Liberty's Storytime

Join us at our community center for Storytime where we will be reading the book *"Hot Wheels Let's Race Octopus Attack"* while enjoying provided snacks and beverages. First 40 attendees will receive a FREE prize!

**NOV  
7th**

4pm - 6pm

## Liberty Paint Night

Join us for our free-style paint night where all materials will be supplied to make your own personal painting to take home. Be sure to check Community Rewards to sign up for this event!

**NOV  
13th**

5pm - 6pm

## Snow globe & Coffee Night

Join us for an evening of iced coffee and decorating your own snow globe to take home. Be sure to check Community Rewards to sign up for this event!

**NOV  
14th**

4pm - 6pm

## Photos with Santa

Join us for a festive photo opportunity with Santa. Hot cocoa and cookies will be provided. Be sure to check Community Rewards to sign up for this event!

**NOV  
19th**

5pm

## Bingo Night

Join us for our last Bingo Night of the year. Get ready for an evening of fun, laughter, and exciting prizes! Be sure to check Community Rewards to sign up for this event!

**NOV  
25th**

4pm

## Pumpkin Pie Drive - Thru

Stop by our community centers and grab your FREE pumpkin pie just in time for Thanksgiving! \*While supplies last\*

Questions? Contact us at  
[LMHJBLMevents@livelmh.com](mailto:LMHJBLMevents@livelmh.com)

For More Detailed Information:  
[Check Community Rewards](#)

SCAN HERE





**NOVEMBER EVENTS**

**VOLUNTEER OPPORTUNITIES**

JBLM BOSS Event Sign Up



Instagram:  
@JBLMBOSSTEAM  
Office #: 253-967-5636



 **NOVEMBER 2025**  
BETTER OPPORTUNITIES FOR SINGLE SERVICE MEMBERS

**What's Happening with BOSS**

**November 7: Paint N Sip (1800-2000)**  
Cost: FREE  
Join us for our popular, monthly Paint N Sip. Bring your friends!  
Location: Meet at the Warrior Zone at 1800.  
Registration: Register through QR code.

**November 14: Leavenworth Day Trip (0600-1900)**  
Cost: FREE  
Take a trip to the famous Leavenworth, WA!  
Location: Meet at Warrior Zone at 0530.  
Registration: Register through QR code.

**November 19: Bowling (1700-1900)**  
Join us for a fun afternoon of Bowling!  
Cost: Free  
Location: Bowl Arena Lanes on Lewis Main; Meet at Warrior Zone at 1630 for a ride.  
Registration: Register through QR code or the BOSS office.

**November 20: Community Meeting (1400-1500)**  
Let your voice be heard and see what's happening with BOSS in our monthly Community Meeting.  
Location: Stone Education Center, 6242 Colorado Ave, JBLM Lewis Main.

**November 27: Thanksgiving with BOSS (1500-1700)**  
Stop by the Warrior Zone on Thanksgiving day for a free meal with your friends!  
Cost: FREE  
Location: Warrior Zone.  
Registration: Register through QR code.

**Volunteer Opportunities**

**November 5: Paws for Purple Hearts (1000-1200)**  
Come and support a local non-profit that supports veterans!  
Location: Warrior Zone at 0930.  
Registration: Register through QR code.

**November 12: Lewis Army Museum (1000-1200)**  
Join us at the Lewis Army Museum to volunteer!  
Location: Lewis Army Museum, Meet at the Warrior Zone for a ride at 0930.  
Registration: Register through QR code.

**November 18: Thrift Store (1000-1200)**  
Help us volunteer at the Lewis Main Thrift Store!  
Location: Lewis Main Thrift Store, Meet at the Warrior Zone for a ride at 0930.  
Registration: Register through QR code.

**November 27: Thanksgiving with BOSS (1400-1700)**  
Help us set up and serve Thanksgiving dinner with BOSS!  
Location: Warrior Zone  
Registration: Register through QR code.

Sign up for BOSS events here!



Proudly Sponsored By



No federal endorsement implied.

**GET IN TOUCH**  
JBLMBOSS@army.mil  
253-967-5636  
JBLMbossteam





 **Thanks Giving MEALS**  
PRESENTED BY 



**Thursday, Nov.27**  
**Warrior Zone • 3-5 p.m.**  
**Free for Service Members\***

*\*While supplies last*

ALSO SPONSORED BY



No federal endorsement implied.

**GET IN TOUCH**  
JBLMBOSS@army.mil  
253-967-5636  
JBLMbossteam







U.S. ARMY

# Holiday Food Assistance Program & Events



U.S. AIR FORCE

## NOURISH PIERCE COUNTY

Food Banks for Healthier Futures

### Mobile Food Bank Coming to Joint Base Lewis-McChord

**Everyone is welcome!**

No ID or appointment required.  
Just come as you are and take home  
nutritious food for yourself or your family.

Fresh produce | Pantry staples | Culturally  
responsive foods | Friendly smiles

[www.nourishpc.org](http://www.nourishpc.org)

#### Three (+ 1) Pillars of JBLM Food Assistance:

1. **Targeted Support:** specific programs providing targeted support to Families of greatest risk
  - Examples: Holiday (Food) Assistance Program, Chaplain Gift Cards...
2. **Persistent Support:** Unit organized food banks & ASYMCA Food Pantry
  - Unit / H2F food banks
  - **Weekly** Mobile Food Pantry visits through *Nourish PNW* (target of ~250 families of support)
    - Thursdays 2:30pm-6pm at Devotion Park, **Next execution on November 13<sup>th</sup>**.
3. **Surge Support**, quarterly “large events” for seasonal times of increased need, plan for FY26 is to try to execute three:
 

These events will feature MWR support and Family support activities.

  1. “Winter Holidays,” **first execution on November 22<sup>nd</sup>**. (target of 600+ families of support)
  2. “Spring Time”
  3. “Back to School”
4. **(+1) Community Support:** Grassroots banks, self-organized on and off installation
  - These are the garages, churches, and non-profit options that exist through the community.
  - Garrison support to the +1 pillar focuses on connecting need to resource through communication, ensuring public health codes are followed (on installation) and vetting these programs to protect Families from predatory programs that exist in this space.





**Armed Forces Community Service  
Holiday Assistance Program funded entirely by donations**



## 2024 HAP Results:

**Thanksgiving:** 434 families purchased \$21,700 worth of food using the \$50 vouchers that were distributed

**Christmas:** 292 families purchased \$14,600 worth of food using the \$50 vouchers that were distributed

The JBLM Lewis Main DeCA Commissary assisted **200** families with a turkey or ham and a grocery bag of side items





- **2025 Goal: assist a total of 607 Families with funds for food or a turkey and sides to augment their Thanksgiving dinner**
- **AFCS HAP funds on hand will assist 407 Families with food vouchers worth \$35 each, redeemable at JBLM Lewis Main Commissary**
- **JBLM Lewis Main DeCA Commissary has donated 200 vouchers redeemable for a Butterball or Jenny-O Turkey and a grocery bag of side items**







## Armed Forces Community Service 2025 Holiday Assistance Program

### HAP Kick-off for Voucher Distribution

**Date: 12 November 2025**

**Time: 1300-1400**

**Location: Bldg. 1010, Room 207**



# OPERATION TURKEY DROP NOVEMBER 20TH



Sponsored by PMBA and AFA







# Great Deals for Junior Enlisted

## New additions effective 1 OCT 25



### Golf

- E1-E4: 1 round of 9 holes free at Eagle's Pride, Green Course.  
**Mon-Thu: anytime, Fri-Sun: after noon**
- Tiered Pricing on Simulator (via rank)
- Tiered Pricing on Memberships (via rank)



### Bowling

- E1-E4 and Families: Free 1 Hour Lane Rental (or 1 Game)  
Wed-Thu 1700-2000
- E1-E4: \$5 discount for unlimited hour
- E1-E4: Discount \$1 per Game / \$1 Shoe Rental



### Auto Skills

- E1-E4: 20% discount on lift bay rental
- E1-E4 and Families: 2 Free Hours Bay Usage (daily) at Lewis & McChord



### Rentals

- E1-E4 and Families: 50% Discount Daily Equipment Rental (i.e. Camping, Fishing, Party Equipment) Excludes RVs, Trailers, Pavilions and motorized boats
- Free Unit Issue - Org Day Equipment
- All AD Free Climbing Wall



### RV Storage & Moorage

- Tiered Pricing (via Rank)



### Cabins & Camping

- Tiered Pricing (via Rank)



### Events Calendar



### Fitness Class

**Free participation for all MWR-eligible patrons in all MWR group fitness classes**



### Unit Funds

- \$4 per Service Member in the unit, annually. Funds do not roll over.
- Must use in MWR: Outdoor Recreation, MWR Catering, Texas Roadhouse, Org Days, Bowling or Golf, etc.

Must benefit entire unit.



### Pools

- **Free pool access for all MWR-eligible patrons**
- Splash Parks and American Lake access free to all
- E1-E4: Discount on Youth Swim Lessons



### Conference Space

- \$0 Room Fee @ Bistro Mon-Fri (Units, SFRGs, Registered POs) Self-Set-Up / Clean.
- Outside food & beverage is authorized



### Leisure Travel

- Discounted Tickets One Day Prior to Special Event - Targeted towards BOSS Program or E1-E4



### Races

- Free-** Ten-Miler, JBLM Run to Remember, wear blue: Veterans Day.
- Paid-** Includes shirt & medal: Shamrock Run, Down & Dirty Trail Run, JBLM Half-Marathon, Run, Rudolph, Run. Units can join free, for FoFS points, but no shirt or medal.

### Other FREE MWR Programs\*

- Warrior Zone (excl. food)
- Sounders Indoor Playground
- Intramural Sports
- Libraries
- Children's Museum / ASYMCA
- Resiliency Thru Art Programs

\* Some exclusions apply



## Ongoing upgrades:

- Boat Launch
- McChord Annex
- Arts & Crafts Center will remain in the temp location at Adventures Unlimited, 739 Battery Rd., McChord Field through February for an HVAC project.
- Outdoor Pickleball/Tennis Courts at McVeigh Fitness Center are closed through end of Dec. 2025 for a resurfacing project. (*At right*)
- The Bowl Arena bar area, restrooms and flooring are being refreshed. There will be minimal to no interruptions to service.

## Closures:

- **CYS Closure Dates FY26**
  - 26 December 2025
  - 16 January 2026
  - 06 April 2026
  - 28 August 2026
- **Mission-Related Duty Only**
  - 28 November 2025
  - 24 December 2025
  - Requires command-endorsed form.
  - Childcare will be consolidated to one CDC and one SAC.





# FALL CALENDAR

## October

|   |       |
|---|-------|
| Fall Youth Climb Club Ages 6-8                            | \$135 |
| Every Tuesday through November                            |       |
| Fall Youth Climb Club Ages 9-14                           | \$135 |
| Every Thursday through Dec. 4                             |       |
| TBD Razor Clamming Digs                                   | \$71  |
| 4: Intro to Fly Fishing                                   | \$50  |
| 12-13: Lake Ingalls Overnight<br>Holiday Backpacking Trip | \$232 |
| 15: Parent & Kid Belay Night                              | \$62  |
| 18-19: Overnight Fly Fishing Camp                         | \$600 |
| 18: Photography 101                                       | \$40  |
| 19: Whale Watching Tour                                   | \$155 |
| 19: Jr. Explorers: Mima Mounds                            | \$40  |
| 19: Staircase Rapids Loop Hike                            | \$60  |
| 22: Parent & Kid Belay Night                              | \$62  |
| 24-26: Carne Mountain Larches                             | \$193 |
| 25: Intro to Waterfowl Hunt+Shooting                      | \$65  |
| 26: Explore Spooky Rain Forest                            | \$74  |
| 25-26: Wilderness First Aid                               | \$200 |
| 29: Parent & Kid Belay Night                              | \$62  |

## November

|                                     |       |
|-------------------------------------|-------|
| 1: Photography 101                  | \$40  |
| 8: Intro to Fly Fishing             | \$50  |
| 8: Arboretum Photo Walk             | \$62  |
| 9: Deception Pass/Explore Whidbey   | \$85  |
| 15-16: Overnight Fly Fishing Camp   | \$600 |
| 15: Cape Flattery Hike              | \$90  |
| 16: Oregon Waterfall Tour           | \$84  |
| 22: Photo: Kubota Japanese Gardens  | \$51  |
| 22-23: Bikepacking Island Overnight | \$207 |
| 28: Leavenworth Lights              | \$70  |
| 29: Whale Watching Tour             | \$155 |
| 29: Leavenworth Lights              | \$70  |
| 30: Jr. Explorers: Staircase Rapids | \$70  |
| 30: Leavenworth Lights              | \$70  |

## December

|                                     |       |
|-------------------------------------|-------|
| 6: Photography 101                  | \$40  |
| 6: Leavenworth Lights               | \$70  |
| 7: Leavenworth Lights               | \$70  |
| 12: Leavenworth Lights              | \$70  |
| 13: Leavenworth Lights              | \$70  |
| 13-14: Wilderness First Aid         | \$200 |
| 14: Hyak Snow Day                   | \$45  |
| 19: Leavenworth Lights              | \$70  |
| 20: Photo: Seattle Night Photo      | \$74  |
| 20: Explore Victoria, B.C.          | \$134 |
| 20: Leavenworth Lights              | \$70  |
| 21: Leavenworth Lights              | \$70  |
| 28: Jr. Explorers: Naches Peak Loop | \$60  |

**Private trips available! Mid-Week Fly Fishing: \$300-\$800**  
**Hunting: \$225-\$550 | Climbing: \$65-\$550 | Shuttle: \$650**

**JBLMmwrRegistration.com**

**NW Adventure Center | 253-967-7744**

**JBLMmwr**





# An Immersive Paint & Sip Experience



MISSION: MASTERPIECE

**PAINT and SIP**

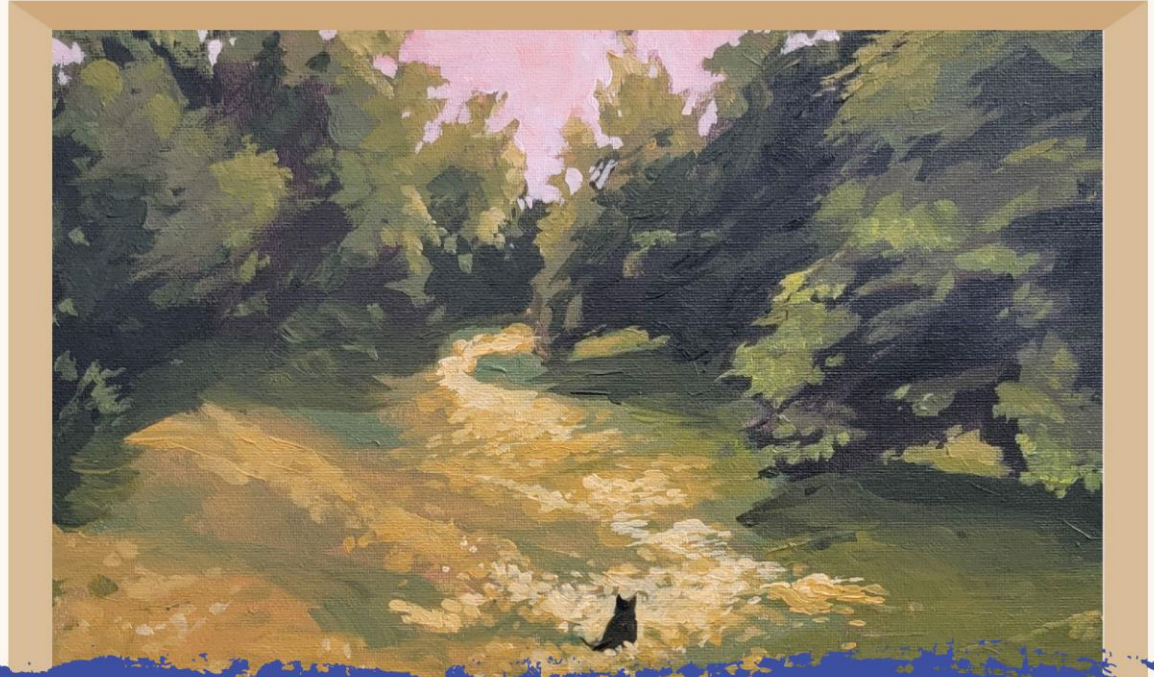
## Warrior Zone

November 14

Two Sessions

11 a.m. or 5:30 p.m.

\$15 | Ages 18+



## Register by Nov. 12!

Follow along with a professional artist to create a masterpiece!  
Enjoy accompanying snacks and beverages in a fun social atmosphere.

Register with Arts and Crafts in person or by phone at 253-982-6719. Card only.





# Outdoor Rec WINTER EXPO

**Saturday  
Nov. 15, 9 AM–3 PM  
NW Adventure Center**

8050 NCO Beach Rd, Lewis North | 253-967-7744

***MWR Winter Gear Sale  
Free Ski & Snowboard Waxes  
Outdoor Rec Winter Trip Info  
Seasonal Ski Rentals  
Ikon Ski Passes  
Door Prizes & more!***

JBLMmwr



Sponsored by



xfinity



TRIPS



# TURKEY SHOOT

Plus 200 gift bags with side dishes for Thanksgiving, courtesy of the Chapel Unplugged Contemporary Service Community.

# FREE!



GARY SINISE  
FOUNDATION



No federal endorsement implied.

**Saturday, Nov. 22**  
**11 AM–4 PM**  
**MWR Fest Tent**

-  **Grocery Pickup Program\***
-  **Gellyball Turkey Shoot**
-  **Resource Tables**
-  **Arts & Crafts**
-  **Entertainment & more!**

\*Groceries available while supplies last.

**Come talk turkey with MWR!**  
**Free pizza and drinks to the first 200**  
**brought to you by the Gary Sinise Foundation.**

JBLMmwr   



# UNITS & SQUADRONS

## ENTER THE

# GIANT HOLIDAY CARD

## DECORATING CONTEST!

YOU COULD WIN \$500 IN UNIT FUNDS!



DETAILS AT



JBLMmwr   





# Winterfest

## Holiday Tree Lightings

**Lewis – Tuesday, Dec. 2**

3:30 p.m. Devotion Park

**Yakima Training Center – Wednesday, Dec. 3**

3:30 p.m. Bldg 135

**McChord – Thursday, Dec. 4**

3:30 p.m. McChord Theater

## Trees for Troops

**Active duty E1–E4, pick up a free tree!**

Dec. 13, 10 a.m. Behind Carey Theater

## Run, Rudolph, Run & Kris Kringle Market

Join us for this 5K fun run! Held in conjunction with the Kris Kringle Market.  
Dec. 13, 10 a.m. MWR Fest Tent

## Jingle Jamboree

**Winterfest's MAIN EVENT!**

**Saturday, Dec. 6, 10 a.m.– 4 p.m. McChord Field**

Join us for the JBLM holiday event of the season, with all sorts of free family fun!


*Scan for all the details*



# Winterfest is all month long!



# JBLM MWR Winterfest

| 2 Dec  | 3 Dec   | 4 Dec   | 6 Dec  |
|--|---|---|--|
| 3:30PM – Lewis Holiday Tree Lighting, Devotion Park  | 3:30PM – Yakima Training Center Holiday Tree Lighting, building 135                 | 3:30PM – McChord Holiday Tree Lighting, McChord Theater | <b>10:00AM – 4:00PM – Jingle Jamboree: Winterfest's MAIN EVENT! Hangar 3 McChord Field</b> |
| 6:00PM – Jingle Bell Jubilee, America's I Corps Band Holiday Concert, Carey Theater  |   |   |  |
| 13 Dec   |  |   |  |
| 10:00AM – Run Rudolph Run 5K, MWR Fest Tent, 5K-\$30, 1K-\$15. Register: <a href="http://JBLMraces.com">JBLMraces.com</a> .  |   |   |  |
| <p><b>Kris Kringle Holiday Market will run in conjunction with the 5K</b></p> <p>10:00AM – 5:30PM – Trees For Troops, behind Carey Theater.</p> <p>Active duty E1-E4, pick up a free real Christmas Tree while they last</p> |   |   |  |

# JBLM MWR

## FoFS Scoreboard & Upcoming Events



| Leaderboard | BDE/GRP  | BTN/SQD  |
|-------------|----------|----------|
| First       | 1 MDTF   | 1-51 ADA |
| Second      | 17th FAB | 1-37 FA  |
| Third       | 16th CAB | 508th MP |

### Current Events

- CC Indoor Soccer  
6 Oct – 20 Nov (McChord)

### Upcoming Events

- Winterfest Holiday Basketball  
1-4 Dec (SFH and Wilson)
- Run Rudolph run  
13 Dec (MWR Fest Tent)
- CC Basketball  
26 Jan – 12 Mar (SFH)
- CC Outdoor Soccer  
16 Mar – 30 Apr (LNAC)
- CC Ten Miler run  
4 Apr (Scout Out Gate)

### SFRGs/Booster Clubs/POs

Concessions/Food Booth

Full FoFS schedule:



Partner with Us!







# HOLIDAY HOURS



JBLMmwr   





# Closing Remarks



**Air Force Senior Commander**  
**Army Senior Commander**



# JBLM CLIF Notes (NOV 2025)

## Upcoming Events:

- **8 Nov** Wear Blue Veterans Day Run
- **10-11 Nov** DONSA & Holiday
- **6, 13 & 20 Nov** Weekly Food Pantry
- **15 Nov** Winter Expo / Op RIDE HOME
- **22 Nov** Turkey Shoot
- **22 Nov** Qtrly Food Assistance Event
- **27-28 Nov** Holiday & DONSA
- **2 Dec** Lewis Tree Lighting
- **4 Dec** McChord Tree Lighting
- **4, 13, 20 Dec** Weekly Food Pantry
- **6 Dec** McChord Jingle Jamboree
- **13 Dec** Wreaths Across America / Rudolph 5K / Trees-4-Troops
- **25-26 Dec** Holiday & DONSA

## 1. Directorate of Emergency Services

- Pendleton Underpass construction - alternating lanes of traffic 19SEP25-26NOV25.
- Madigan Gate Closures - 28OCT25 until MAR26 (T).
- Winter Driving Safety - Take extra precaution, low light hours reduce driver visibility. Wet, iced, or snowy roads increase risk of hydroplaning and sliding. Ensure you are equipped with traction tires or chains where WSDOT requires.
- Physical Training Safety – PT Not Authorized on East Gate Rd or in designated housing areas

## 2. MAMC 3 Flu Vaccination Options

- Community Outreach Flu Vaccination Events MAMC Medical Mall, Ground Floor, 21-22 Nov, 0800-1500.
- Participating Tricare Covered Retail Pharmacy (<https://militaryrx.express-scripts.com/find-pharmacy>).
- Military Treatment Facilities or Clinics (call to confirm vaccination is available).

## 3. Ready & Resilient (R2) Performance Center

- Navigate Holiday Challenges with Mental Performance Tools. QR Code below.

## 4. ASYMCA - Operation RIDE HOME

- Application Window closes November 15<sup>th</sup>. Open to E1-E5 military households. Assistance in the form of airline tickets or gift cards to help fund travel home for holidays. QR code below.

## 5. Severe Weather Threat Board (SWTB); determines Delayed Reporting / Early Release Procedures (1 of 3)

- Inquire with unit Chain of command and monitor MAPA, ALERT, and/or AD-HOC for messaging.

## 6. CYS Closures FY26: 26 Dec, 16 Jan, 6 Apr, 28 Aug

**Next CLIF: 10 December 2025 at McChord Club – Theme: Year in Review & Transitions for 2026**

**CLIF Feedback**



**MWR**



**USO**



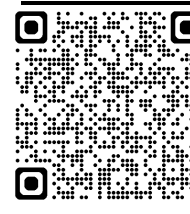
**Operation  
HELPING HAND**



**R2  
Performance  
Center**



**Operation  
RIDE HOME**



**BOSS**



**MAPA**

