



DEPARTMENT OF THE ARMY
US ARMY INSTALLATION MANAGEMENT COMMAND
HEADQUARTERS, UNITED STATES ARMY GARRISON, FORT LEE
3312 A AVENUE, SUITE 208
FORT LEE, VIRGINIA 23801-1723

IMLE-ZA

AUG 25 2020

MEMORANDUM FOR SEE DISTRIBUTION

SUBJECT: Use of Petersburg National Battlefield by Fort Lee Personnel

1. Group Use Policy:

a. Use of the park's roads and trails for unit physical fitness training is permitted between the hours of 0500 to 0730 hours. Units conducting PT must be out of the park by 0730.

b. Interference with park operations, programs, staff and visitors is prohibited.

c. Military units conducting physical fitness training are prohibited from counting cadence, displaying guidons and possession of weapons or simulated weapons.

d. Military units conducting physical fitness training should maintain columns no wider than two abreast and remain in the multi-purpose lane (the narrower of the two lanes on the Park Tour Road).

e. Military units conducting physical fitness training on park trails must yield to all horse-mounted trail users.

f. Educational Staff Rides must be approved in advance. A fee waiver approval should be obtained by calling the park Chief of Interpretation at 804-732-3531 ext. 201 or by visiting the Eastern Front Visitor Center during business hours.

2. Individual Use (Without a paid valid Park Pass) Policy:

a. Use of the park's roads and trails for physical fitness training is permitted from 0500 hours until sunset.

b. Interference with park operations, programs, staff and visitors is prohibited.

3. Special Uses:

a. Any non-PT uses (e.g. rucksack marches, run/walk, training, or competitive events) require the issuance of a special use permit from the Park Superintendent.

IMLE-ZA

SUBJECT: Use of Petersburg National Battlefield by Fort Lee Personnel

b. Written requests should be made at least 30 days prior to the event **and** must be sent to the attention of the Park Superintendent at: Petersburg National Battlefield, 1539 Hickory Hill Road, Petersburg, VA 23803, or by email to:

ann.blumenschine@nps.gov. For questions call 804-732-3531, ext. 203.

4. Any use of the park other than outlined above constitutes public access and open to the general public.

5. This policy supersedes Fort Lee Policy No.02-08 dated, Oct 4, 2018.

6. The proponent for this policy letter is the DPTMS Operations Division at 734-1584.

3 Encls

1. Mahone 5K Map

2. PETE Trail Map

3. Petersburg National Battlefield
Welcomes You

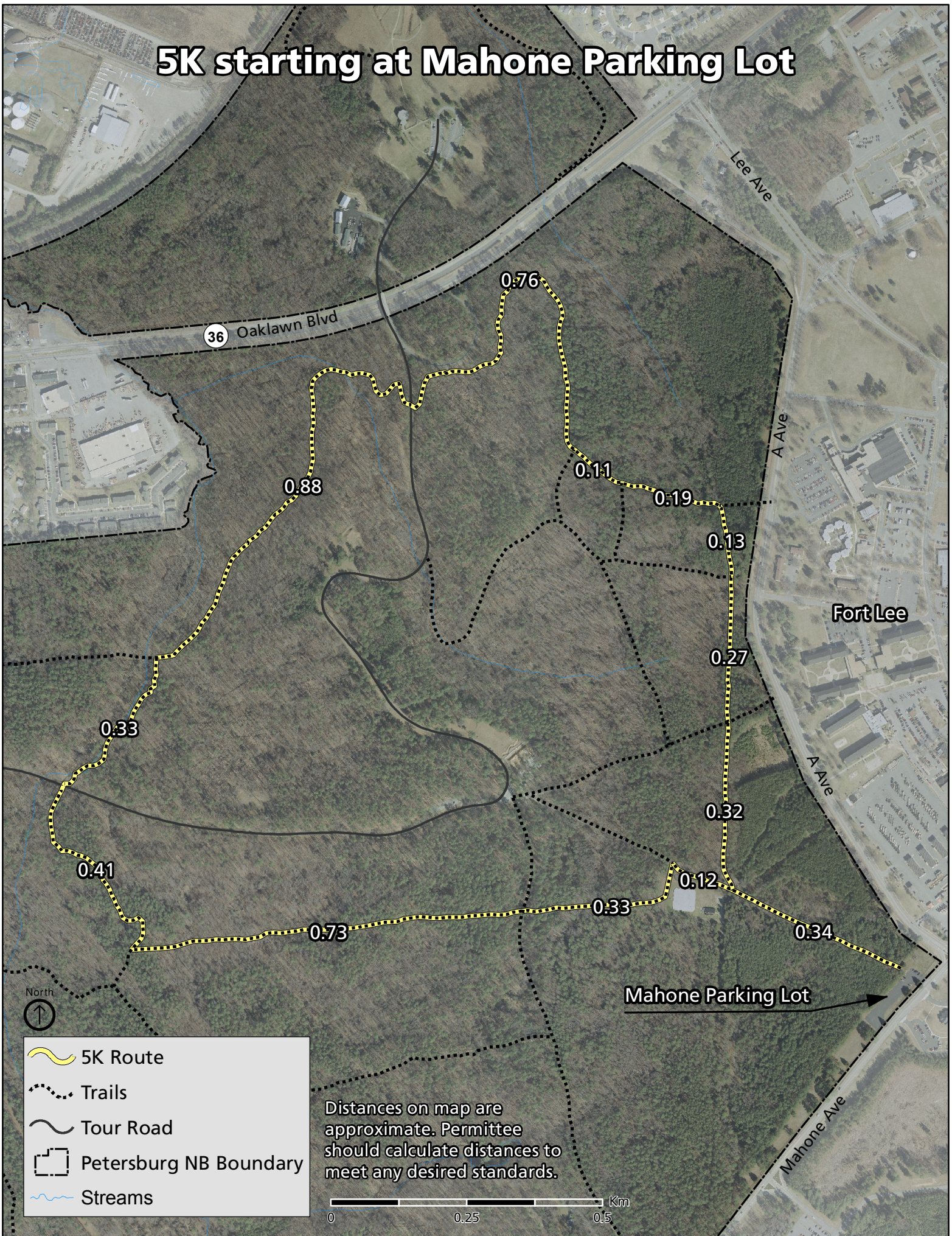


KARIN L. WATSON
COL, MP
Commanding

DISTRIBUTION:

US ARMY Fort Lee IMCOM Atlantic List Fort
Fort Lee Key Personnel

5K starting at Mahone Parking Lot



Eastern Front Battlefield

National Park Service
U.S. Department of the Interior
Petersburg National Battlefield

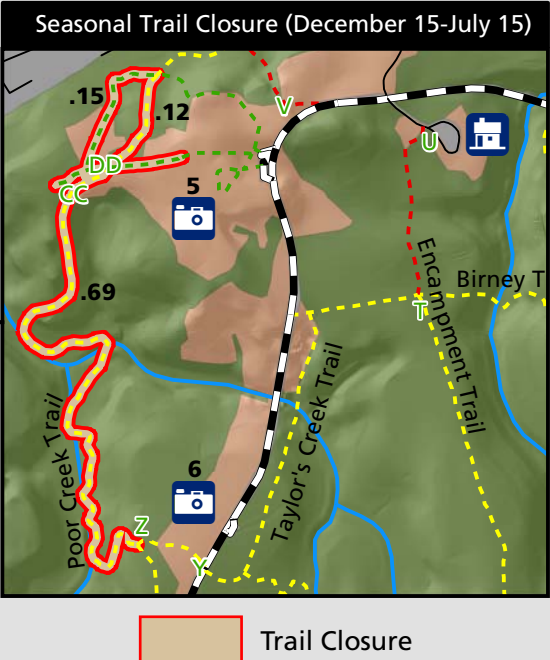


Recreational Trail System

- Multi-use Trail
- Hike/Bike Trail
- Interpretive Trail
- Park Tour Road
- Trail Markers

- Points of Interest**
- 1- Confederate Battery 5
 - 2- Confederate Battery 8
 - 3- Confederate Battery 9
 - 4- Harrison's Creek
 - 5- Fort Stedman
 - 6- Fort Haskell
 - 7- Taylor Farm/Site of Fort Morton
 - 8- The Crater
- Streams
- Park Boundary

- Visitor Center
- Picnic Area
- Special Parking**
- Hike/Bike Parking
- Horse Trailer Parking
- Park Services**
- Park Headquarters
- Ranger Station
- Resource Management
- Maintenance
- Railroads





Everyone

- Please be courteous to other trail users.
- A helmet when riding a horse or bike is suggested.
- Do not wear headphones when riding (state law for bicycles).
- Prevent damage to fragile cultural resources by staying off of earthworks and on the maintained trails.
- Leave no trace by packing out all litter.
- Avoid muddy trails; bicycle ruts and hoof prints can damage the trails.
- Ride/Hike in small groups and pass in single file.
- Stay to the right of the trail; pass to the left.
- Announce your presence when overtaking other trail users from behind.
- Maintain a safe and courteous speed.
- Wooden bridges may be slippery when wet or covered with leaves. Proceed with caution.
- Animals on the trail may act unexpectedly. If you are unsure about approaching a horse or dog, ask the handler for guidance.
- Pets must be kept on a leash at all times.
- Creeks and other waters in the battlefield are not suitable for bathing or drinking.



Hikers and Joggers

- Jogging is not permitted on paved interpretive trails or sidewalks.
- Use the multi-purpose lane when hiking/jogging on the tour road.
- Yield to horse riders.

Bicyclists

- Do not ride on paved interpretive trails or sidewalks.
- When traveling with the flow of traffic on the one-way tour road, observe the 25-mph speed limit.
- Ride only in the multi-purpose lane of the tour road when traveling against the flow of traffic, and observe the 15-mph speed limit.
- Ride in control and pass with caution.
- Stay alert. Faster moving trail users can startle horses and slower moving individuals.
- Take the initiative. Always yield to horse riders and hikers/joggers. This may require you to stop and/or walk your bike.

Please report improper, discourteous, and unlawful activity to the nearest Park Ranger or call the PARKWATCH hotline at (757) 898-0058. Rewards of up to \$500 may be available for information leading to conviction of persons committing crimes on public lands. For more information on Petersburg National Battlefield, visit our web site at <http://www.nps.gov/pete>.

Horse Riders

- Stay on yellow blazed trails only.
- Make sure your horse has the temperament and training for riding on multi-use public trails.
- Advise other trail users of your horse’s temperament to avoid accidents.
- Remember that other trail users may not be familiar with horses or their reactions to new experiences. Be courteous in these situations by offering safety suggestions and answering any questions that others may have.
- Fast riding on crowded trails endangers everyone. Maintain a courteous and safe speed.
- Horse trailers should park at the horse trailer parking lot located off of 1539 Hickory Hill Road.
- Do not clean out your trailer in the parking area.
- Clean up and remove manure and hay.

In case of an emergency

Each concrete post at major trail intersections is marked with green lettering. When reporting an emergency situation, note the closest lettering to help emergency responders assist quickly.



Petersburg National Battlefield Welcomes You



Whether your interest is in history, nature, or exercise, Petersburg National Battlefield is a beautiful, convenient, and safe place to experience and explore.

Park ground are open to the general public from 0730 to sunset, but Military Personnel may conduct Physical Training (PT) between the hours of 0500 and 0730, provided they adhere to the following standards:

- Wear official PT clothing
- Enter through the Mahone Parking Lot Entrance
- Refrain from carrying weapons or simulated weapons
- Stay in the multi-purpose lane when using the tour road

Units conducting PT must be out of the park by 0730 (unless they have a special use permit). Individuals may conduct PT during park operating hours (0900 to sunset) without a special use permit.

For Special Use Permits, please contact the Business Management Specialist at (804) 732-3571 ext. 104.

Welcome to Petersburg National Battlefield

Petersburg National Battlefield is a free park, during normal operating hours.

Park Rules:

- Alcohol is prohibited
- Dogs must be on a leash
- Yellow blazed trails are open to all users (hike/bike/equestrian)
- Red blazed trails are closed to equestrian users (hike/bike are authorized)
- Paved interpretative sidewalks are open to foot and wheelchair traffic only (excluding running/biking)

Interested in Volunteering? Please contact our Volunteer Coordinator at (804) 732-3571 ext. 113.

Hours of Operation:

Park Grounds for Military Physical Training: 0500-0730

Park Grounds for general use: Sunrise to Sunset (Pedestrian activity only)

Visitor Center/Contact Stations open: 0900-1700

Roadways and Parking lots within Eastern Front: 0900 to 1700 (1 Oct to 11 Mar)
0900 to 2000 (12 Mar to 1 Oct)

Contact Information:

Web: www.nps.gov/pete

Telephone: (804) 732-3531 ext. 200

Find us on Facebook at Petersburg National Battlefield.

Follow us on Twitter @PetersburgNPS.