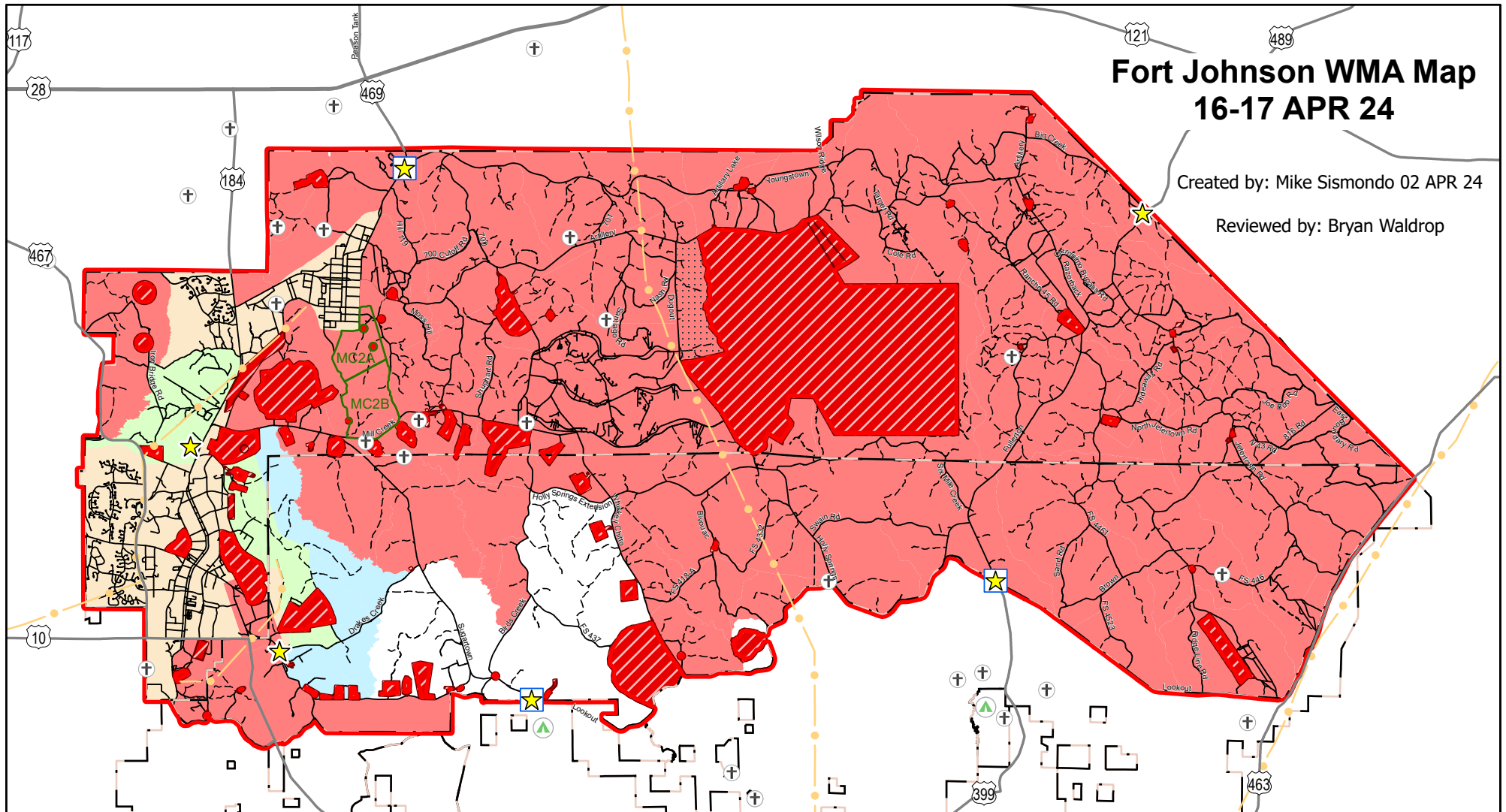


# Fort Johnson WMA Map 16-17 APR 24

Created by: Mike Sismondo 02 APR 24

Reviewed by: Bryan Waldrop



- ★ Hunter Self Clearing
- ★ Self and Either Sex Clearing
- ⊕ Cemetery: NO HUNTING
- ▲ Camping Area
- WMA Boundary
- Pipeline
- Fort Johnson/USFS Boundary
- Experimental Hunting Area

- ▨ DANGER! NO HUNTING, NO ACCESS
- No Gun Hunting - Archery - Either Sex
- Bow, Shotgun, and Muzzle Loader For Deer, Small Game and Turkey
- Archery for Deer, Shotgun Only for Small Game and Turkey (No. 2 Shot or smaller)
- ▤ PCHP Hunting Area
- ▨ Closed for All WMA Activities
- Open for All WMA Activities

Hunting by reservation only for wheelchair confined Physically Challenged Hunter Permit (PCHP) in designated area

Post Game Warden Office: 337-531-5222

Report Wildlife Violations: Louisiana Operations Game Thief  
1-800-442-2511

All man made structures (ie. Radio Towers, Running Trails, Buildings, etc) are off limits to all visitors

Map does not supersede State or Installation Regulations

Vehicles must remain on roads and trails shown on map

