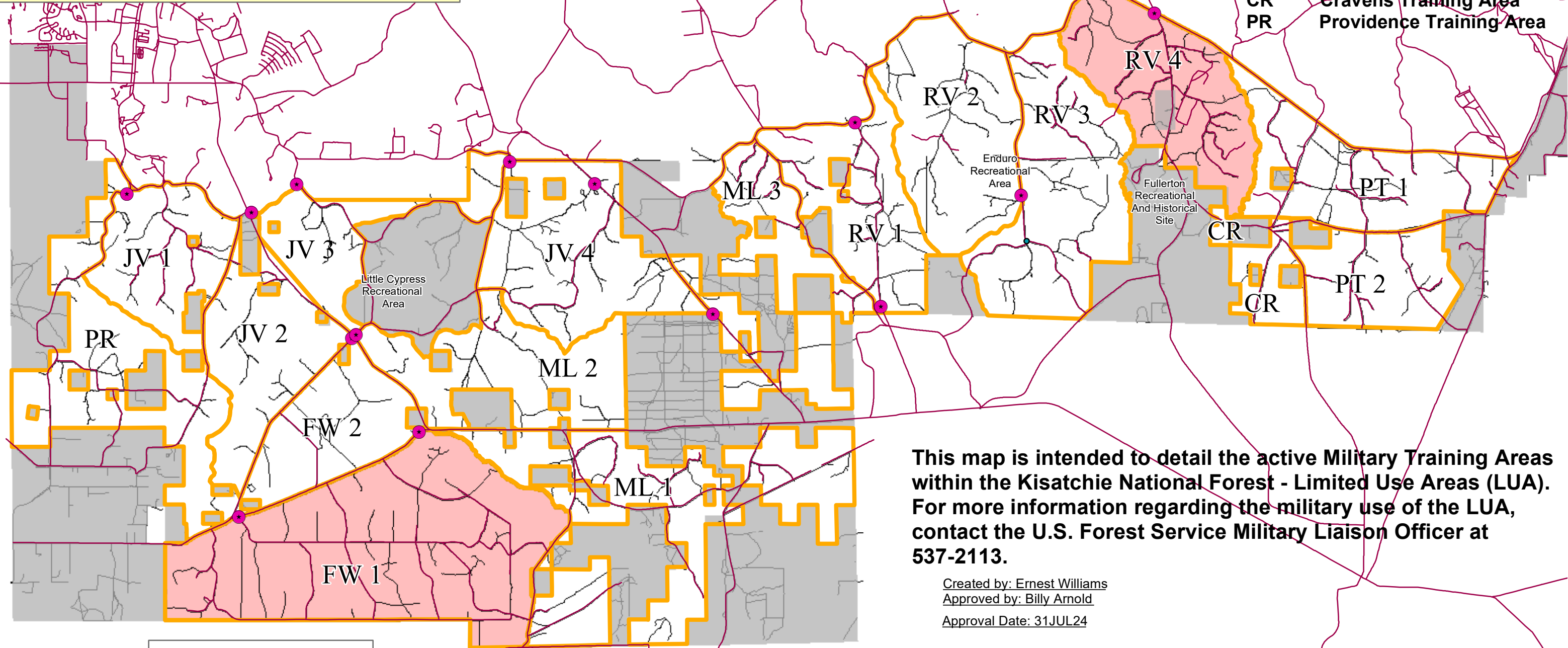


**Military Training In LUA For**  
**Wednesday 14 AUG 24** Through **Sunday 18 AUG 24**

**Fort Johnson Limited Use Area (LUA)  
 Kisatchie National Forest - Vernon Unit  
 Training Area Map**

- JV Johnsonville Training Area
- FW Flatwoods Training Area
- ML Marlow Training Area
- RV Rustville Training Area
- PT Pitkin Training Area
- CR Cravens Training Area
- PR Providence Training Area

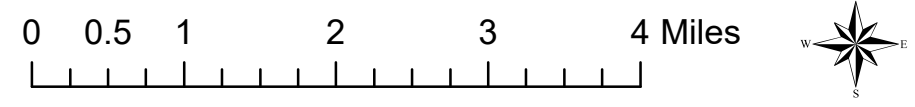


**This map is intended to detail the active Military Training Areas within the Kisatchie National Forest - Limited Use Areas (LUA). For more information regarding the military use of the LUA, contact the U.S. Forest Service Military Liaison Officer at 537-2113.**

Created by: Ernest Williams  
 Approved by: Billy Arnold  
 Approval Date: 31JUL24

**Complaint Line:  
 337-531-1431**

**In case of emergency, contact the on call Public Affairs Officer of the Day at 531-1726 or Range Control at 531-5445**



	No Military Training Scheduled		Streams
	Scheduled For Military Training		Roads
	Off Limits to Military Training		Information Kiosks