

# Welcome to Army Camp Zama

## OFF-POST Housing

The Housing Service Office (HSO) is here to help you find a suitable house or apartment. The objective of the HSO is provide all US Forces personnel with a personalized service to assist them in locating suitable, non-discriminatory, community housing and that such housing is located reasonably near the applicant's duty station. We will provide all of the assistance we possibly can. Please feel free to contact us with any questions or problems about off-base housing.

---

### Business Hours

Mon to Fri : 0800-1200, 1300-1600 / Thu : 1300-1600

Sat, Sun, and Holiday : Closed

---

**\*You are required to report to the Housing Services Office serving your existing and new duty stations before you make housing arrangements for renting, leasing, or purchasing any off-post housing.**

**\*This list is updated every 1<sup>st</sup>, 3<sup>rd</sup> Monday.**

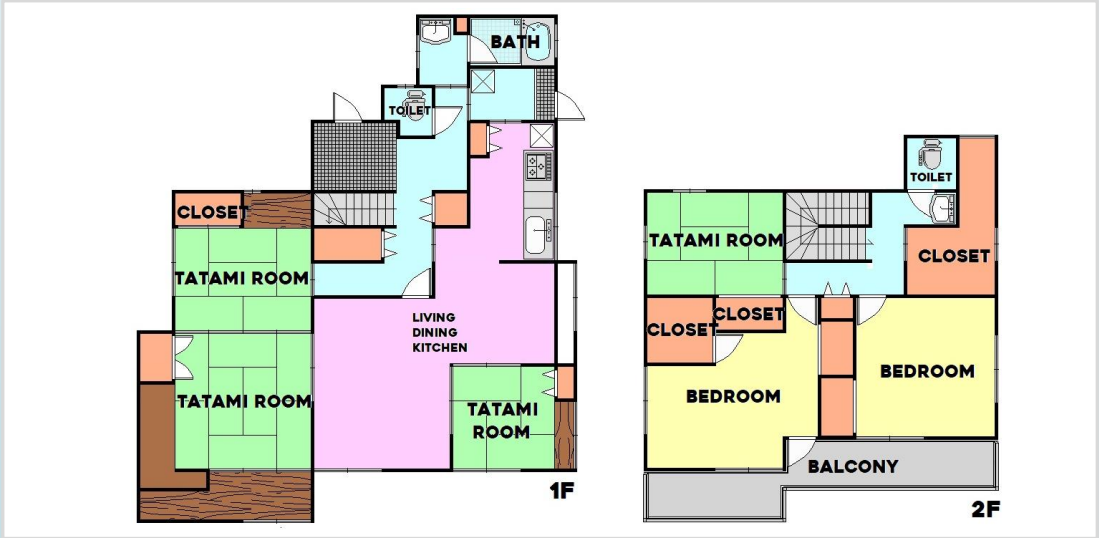
File number  
A - 2000

CITY	Ayase-Shi
Unit Type	House
Size (Square feet)	1806 Square feet
Year Built	1990

Rent Amount	248,000 yen *Appliance included
Appreciation fee	248,000 yen
Commission	272,800 yen
Security Deposit	248,000 yen
Total	1,016,800 yen + Renter's Insurance

Bedrooms	3 rooms
Bathroom	1 full bath + 2 toilet
Tatami Room	4 room
Parking Space	1 car park
Pet	No

Distance from Camp Zama (Drive)	20 minutes
Distance from closest station (walking)	Kashiwadai (Sotetsu-line)  17 minutes



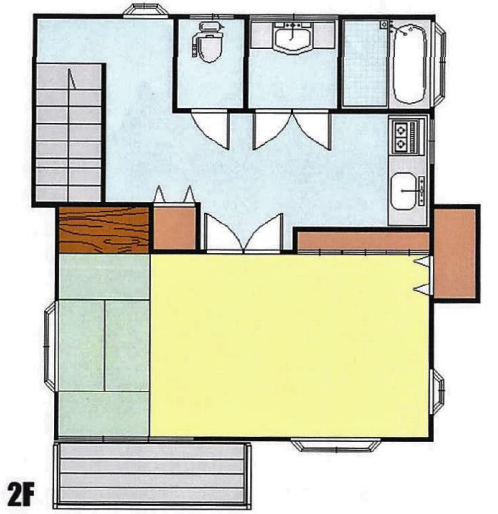
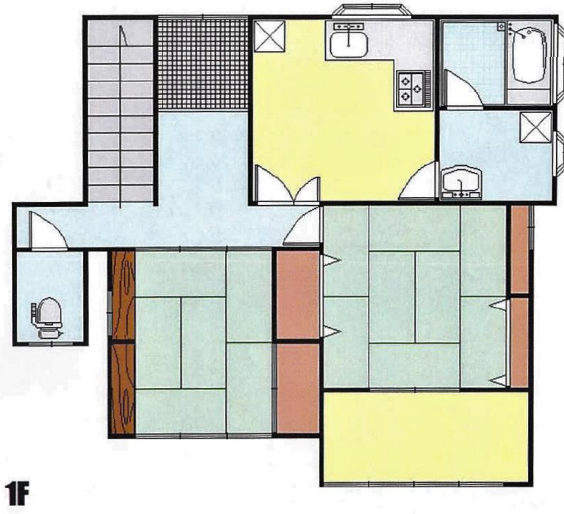
File number  
SA - 2220

CITY	Atsugi-Shi
Unit Type	House
Size (Square feet)	1542 Square feet
Year Built	1975

Rent Amount	215,000 yen
Appreciation fee	215,000 yen
Commission	236,500 yen
Security Deposit	215,000 yen
Total	881,500 yen + Renter's Insurance

Bedrooms	2 rooms
Bathroom	1 full + 2 toilet
Tatami Room	1 room
Parking Space	2 car park
Pet	Negotiable

Distance from Camp Zama (Drive)	45 minutes
Distance from closest station (walking)	Hon-Atsugi (Odakyu-Odawara- line)  15 minutes





File number  
E - 1207

CITY	Ebina-Shi
Unit Type	House
Size (Square feet)	1470 Square feet
Year Built	1988

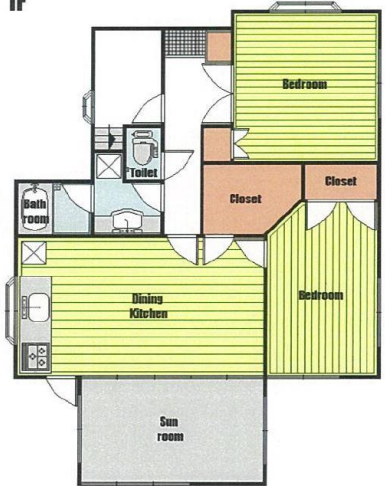
Rent Amount	230,000 yen
Appreciation fee	230,000 yen
Commission	253,000 yen
Security Deposit	230,000 yen
Total	943,000 yen + Renter's Insurance

Bedrooms	4 rooms
Bathroom	1 full + 2 toilet
Tatami Room	1 room
Parking Space	1 car park
Pet	Negotiable

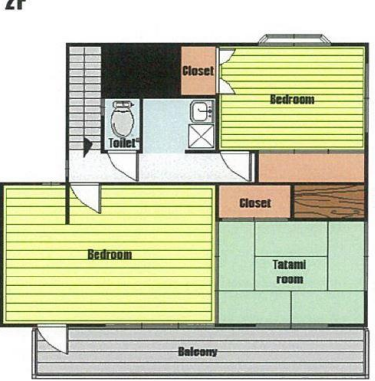
Distance from Camp Zama (Drive)	15 minutes
Distance from closest station (walking)	Zama Staton (Odakyu Odawara- line)  20 minutes



1F



2F



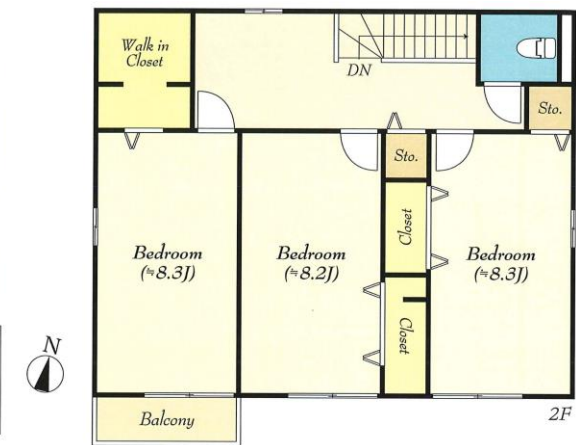
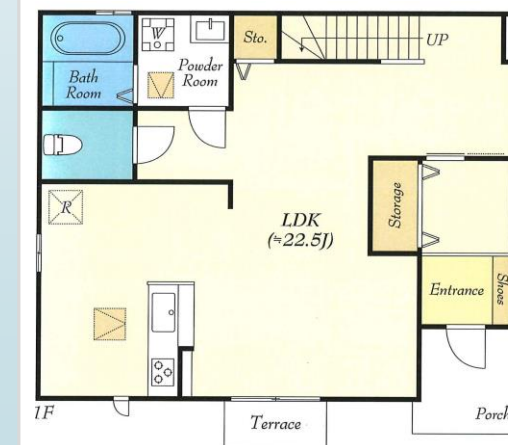
File number  
**Z-2195**

CITY	Zama-Shi
Unit Type	House
Size (Square feet)	1420 Square feet
Year Built	2022

Rent Amount	235,000 yen
Appreciation fee	235,000 yen
Commission	258,500 yen
Security Deposit	235,000 yen
Total	963,500 yen + Renter's Insurance

Bedrooms	3 rooms
Bathroom	1 full bath + 2 toilet
Tatami Room	0
Parking Space	2 car park
Pet	No

Distance from Camp Zama (Drive)	3 minutes
Distance from closest station (walking)	Sobudaishita (Sagami-line) 15 minutes





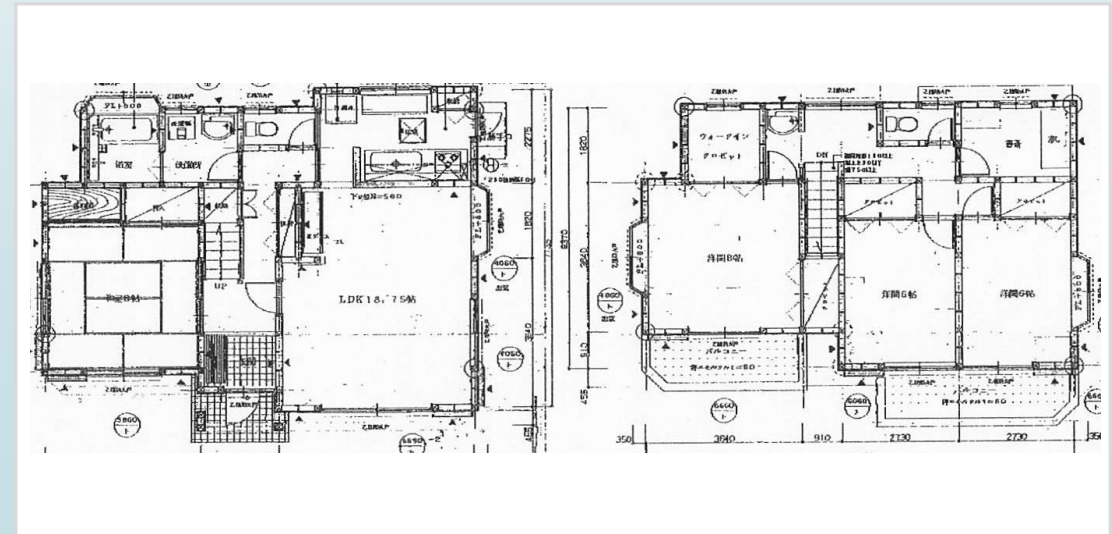
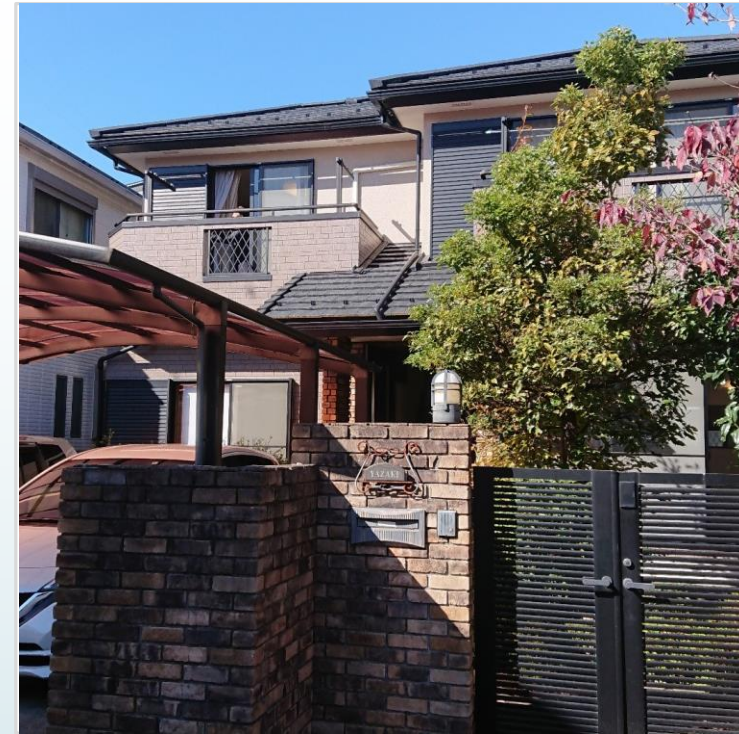
File number  
**G - 2210**

CITY	Sagamihara-Shi
Unit Type	House
Size (Square feet)	1363 Square feet
Year Built	1998

Rent Amount	212,000 yen
Appreciation fee	212,000 yen
Commission	233,200 yen
Security Deposit	212,000 yen
Total	869,200 yen + Renter's Insurance

Bedrooms	3 rooms
Bathroom	1 full bath + 2 toilet
Tatami Room	1 room
Parking Space	1 car park
Pet	No

Distance from Camp Zama (Drive)	20 minutes
Distance from closest station (walking)	Odakyu Sagamihara (Odakyu-Odawara-line) 19 minutes



File number  
**Z - 1254**

CITY	Zama-Shi
Unit Type	House
Size (Square feet)	1318 Square feet
Year Built	1995

Rent Amount	210,000 yen
Appreciation fee	210,000 yen
Commission	210,400 yen
Security Deposit	231,000 yen
Total	861,000 yen + Renter's Insurance

Bedrooms	3 rooms
Bathroom	1 full bath + 2 toilet
Tatami Room	1
Parking Space	1 car park
Pet	No

Distance from Camp Zama (Drive)	10 minutes
Distance from closest station (walking)	Zama (Odakyu-Odawara line) 12 minutes





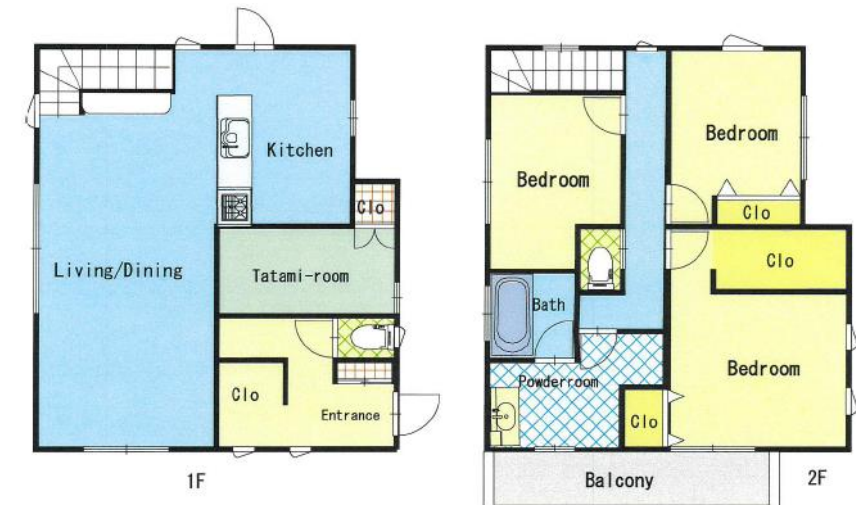
File number  
**Z - 2211**

CITY	Zama-Shi
Unit Type	House
Size (Square feet)	1237 Square feet
Year Built	2017

Rent Amount	218,000 yen
Appreciation fee	218,000 yen
Commission	239,800 yen
Security Deposit	218,000 yen
Total	893,800 yen + Renter's Insurance

Bedrooms	3 rooms
Bathroom	1 full bath + 2 toilet
Tatami Room	0
Parking Space	1 car park
Pet	No

Distance from Camp Zama (Drive)	10 minutes
Distance from closest station (walking)	Zama (Odakyu-Odawara line) 19 minutes





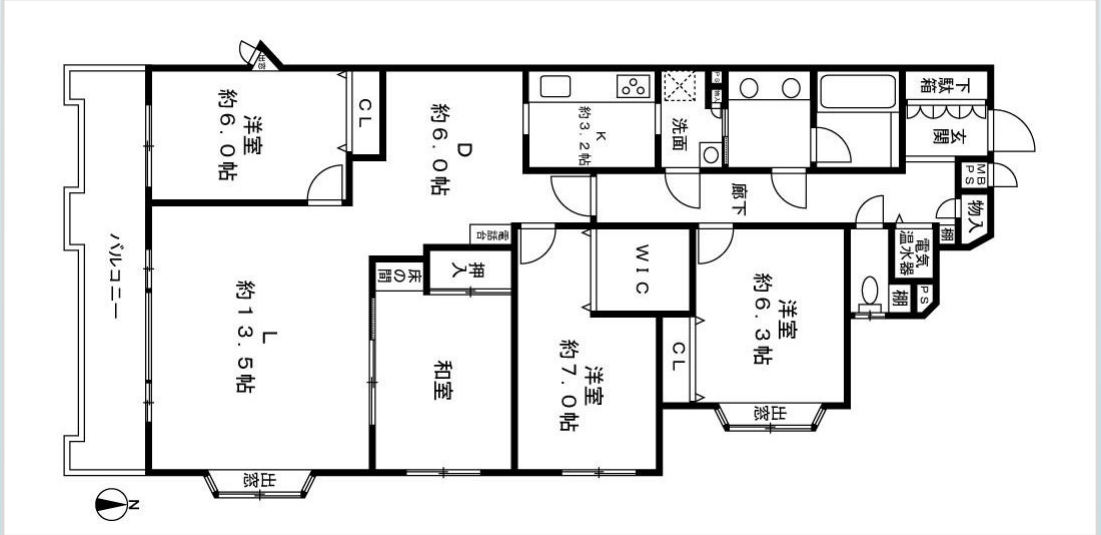
File number  
SA – 2218

CITY	Atsugi-Shi
Unit Type	Apartment
Size (Square feet)	1154 Square feet
Year Built	1991

Rent Amount	199,000 yen
Appreciation fee	199,000 yen
Commission	218,900 yen
Security Deposit	199,000 yen
Total	815,900 yen + Renter's Insurance

Bedrooms	3 rooms
Bathroom	1 full bath + 1 toilet
Tatami Room	1
Parking Space	1 car park
Pet	No

Distance from Camp Zama (Drive)	20 minutes
Distance from closest station (walking)	Shimomizo (JR Sagami-line) 50 minutes



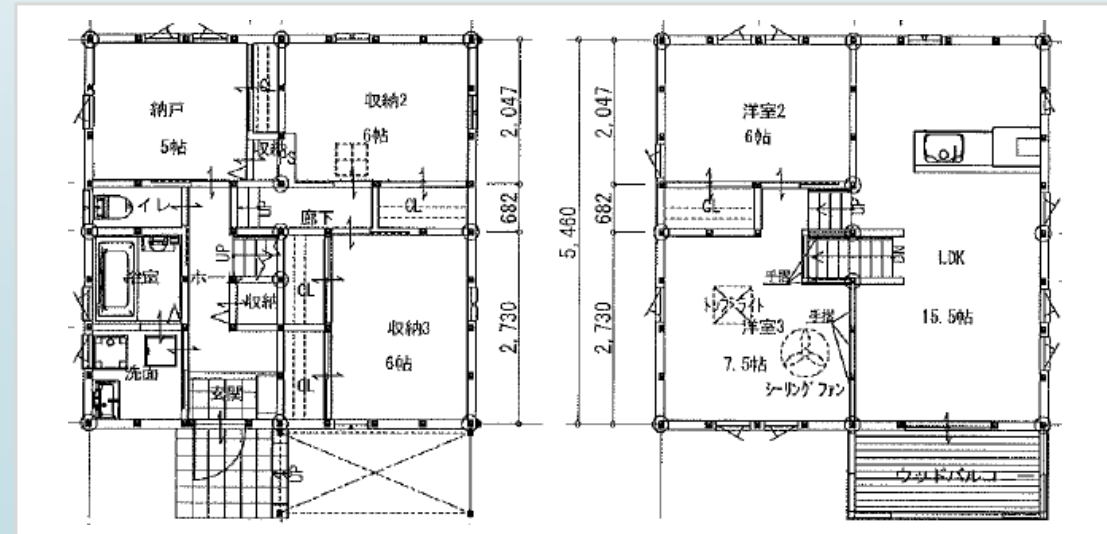
File number  
**Z-2158**

CITY	Zama-Shi
Unit Type	House
Size (Square feet)	1140 Square feet
Year Built	2017

Rent Amount	198,000 yen
Appreciation fee	198,000 yen
Commission	217,800 yen
Security Deposit	198,000 yen
Total	811,800 yen + Renter's Insurance

Bedrooms	2 rooms
Bathroom	1 full + 1 toilet
Tatami Room	0 room
Parking Space	1 car park
Pet	No

Distance from Camp Zama (Drive)	12 minutes
Distance from closest station (walking)	Zama (Odakyu-line) 17 minutes





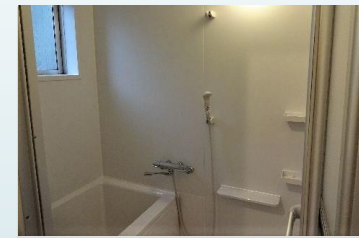
File number  
A - 0621

CITY	Ayase-Shi
Unit Type	House
Size (Square feet)	1113 Square feet
Year Built	1979

Rent Amount	190,000 yen	Appliance included
Appreciation fee	190,000 yen	
Commission	209,000 yen	
Security Deposit	190,000 yen	
Total	779,000 yen	+ Renter's Insurance

Bedrooms	3 rooms
Bathroom	1 full bath + 2 toilet
Tatami Room	1
Parking Space	1 car park
Pet	Yes

Distance from Camp Zama (Drive)	25 minutes
Distance from closest station (walking)	Ebina (Odakyu-Odawara- line / Sotetsu line / JR Sagami line)  10 minutes



File number  
R – 2050

CITY	Yamato-Shi
Unit Type	Duplex
Size (Square feet)	1080 Square feet
Year Built	1997

Rent Amount	197,000 yen
Appreciation fee	197,000 yen
Commission	216,700 yen
Security Deposit	197,000 yen
Total	807,700 yen + Renter's Insurance

Bedrooms	3 rooms
Bathroom	1 full bath + 1 toilet
Tatami Room	0 room
Parking Space	1 car park
Pet	No

Distance from Camp Zama (Drive)	20 minutes
Distance from closest station (walking)	Tsuruma (Odakyu Enoshima-line) 4 minutes





# ZAMA RENTAL DESCRIPTION FOR OFF-POST HOUSING 2023

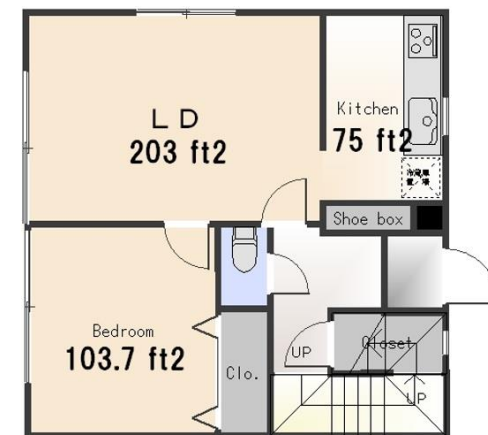
File number  
**Z – 0055**

CITY	Zama-Shi
Unit Type	Town House
Size (Square feet)	1069 Square feet
Year Built	1994

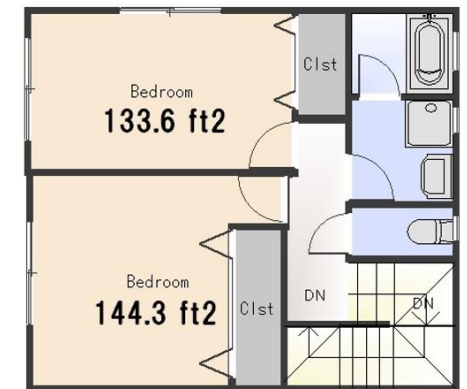
Rent Amount	184,000 yen
Appreciation fee	184,000 yen
Commission	202,400 yen
Security Deposit	184,000 yen
Total	754,400 yen + Renter's Insurance

Bedrooms	3 rooms
Bathroom	1 full bath + 2 toilet
Tatami Room	0 room
Parking Space	2 car park
Pet	Negotiable

Distance from Camp Zama (Drive)	7 minutes
Distance from closest station (walking)	Zama (Odakyu-Odawara-line) 7 minutes



1F



2F

# ZAMA RENTAL DESCRIPTION FOR OFF-POST HOUSING 2023

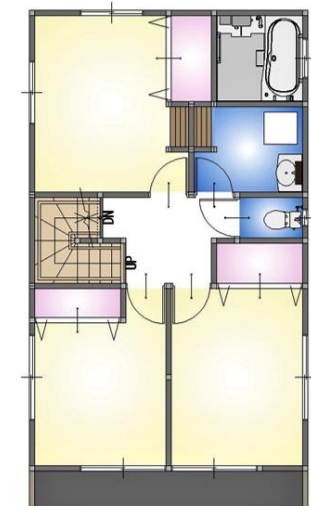
File number  
**Z - 2200**

CITY	Zama-Shi
Unit Type	House
Size (Square feet)	1069 Square feet
Year Built	1988

Rent Amount	217,000 yen	Appliance included
Appreciation fee	217,000 yen	
Commission	238,700 yen	
Security Deposit	217,000 yen	
Total	889,700 yen	+ Renter's Insurance

Bedrooms	4 rooms
Bathroom	1 full bath + 2 toilet
Tatami Room	0 room
Parking Space	1 car park
Pet	Negotiable

Distance from Camp Zama (Drive)	5 minutes
Distance from closest station (walking)	Sobudai-Mae (Odakyu-Odawara- line)  10 minutes





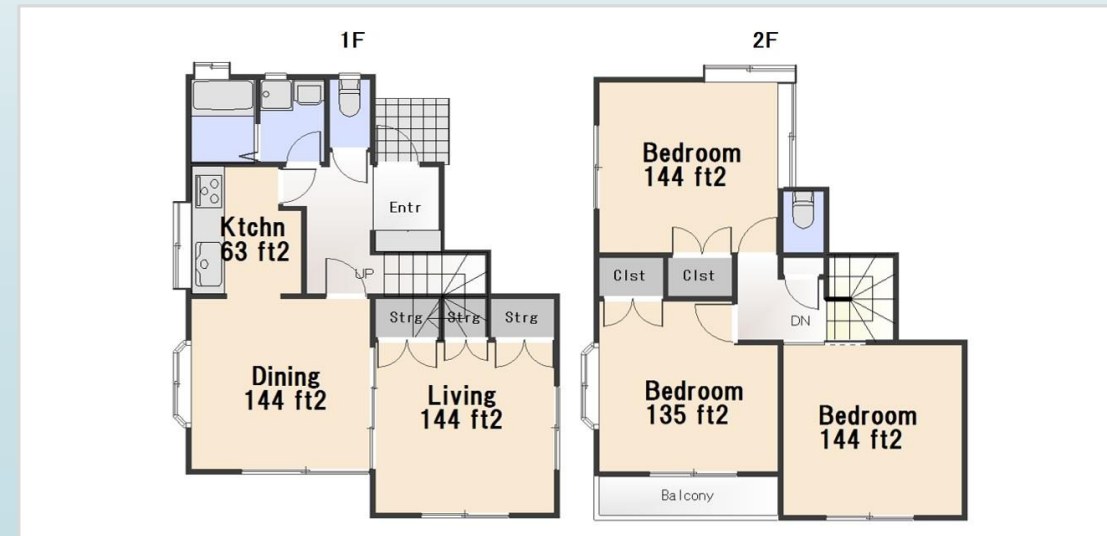
File number  
**E - 0168**

CITY	Ebina-Shi
Unit Type	House
Size (Square feet)	1064 Square feet
Year Built	1992

Rent Amount	170,000 yen	
Appreciation fee	170,000 yen	
Commission	187,000 yen	
Security Deposit	170,000 yen	
Total	697,000 yen	+ Renter's Insurance

Bedrooms	3 rooms
Bathroom	1 full bath + 2 toilet
Tatami Room	0 room
Parking Space	0 car park
Pet	Negotiable

Distance from Camp Zama (Drive)	12 minutes
Distance from closest station (walking)	Zama / Ebina (Odakyu-Odawara- line)  30 minutes



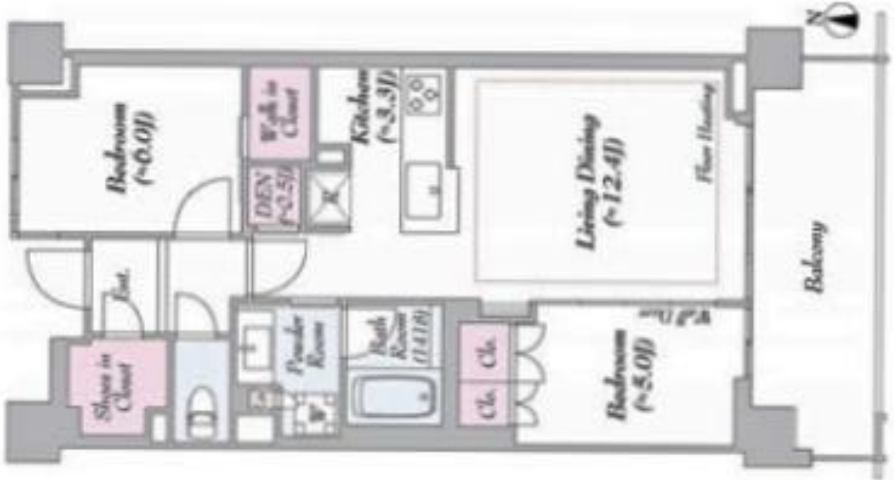
File number  
R – 2064

CITY	Yamato-Shi
Unit Type	Apartment
Size (Square feet)	1063 Square feet
Year Built	2000

Rent Amount	230,000 yen
Appreciation fee	230,000 yen
Commission	253,000 yen
Security Deposit	230,000 yen
Total	943,000 yen + Renter's Insurance

Bedrooms	2 rooms
Bathroom	1 full bath + 2 toilet
Tatami Room	0
Parking Space	0 car park
Pet	No

Distance from Camp Zama (Drive)	20 minutes
Distance from closest station (walking)	Chuo Rinkan Station (Odakyu-Enoshima line) 5 minutes





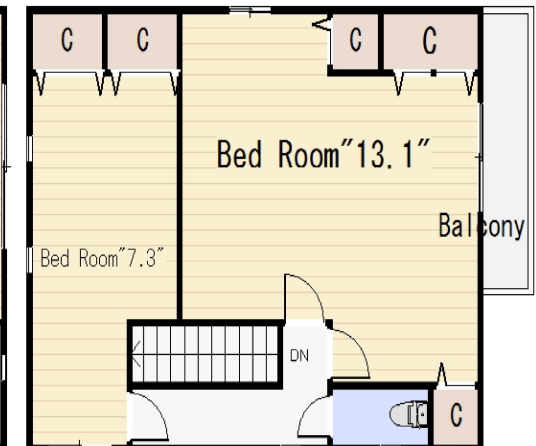
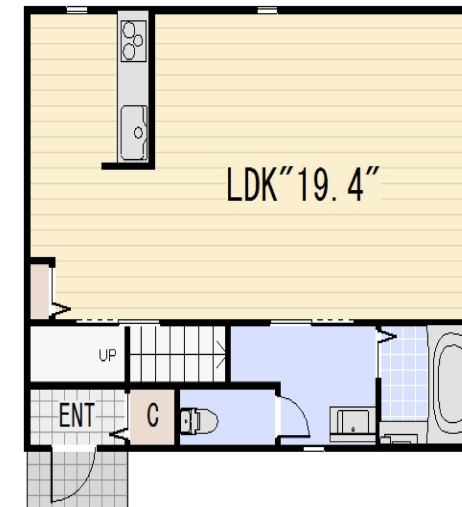
File number  
**Z - 1309**

CITY	Zama-Shi
Unit Type	House
Size (Square feet)	1048 Square feet
Year Built	2023

Rent Amount	195,000 yen
Appreciation fee	195,000 yen
Commission	214,500 yen
Security Deposit	195,000 yen
Total	799,500 yen + Renter's Insurance

Bedrooms	2 rooms
Bathroom	1 full bath + 2 toilet
Tatami Room	0
Parking Space	2 car park
Pet	No

Distance from Camp Zama (Drive)	11 minutes
Distance from closest station (walking)	Minami Rinkan (Odakyu-Enoshima line) 25 minutes



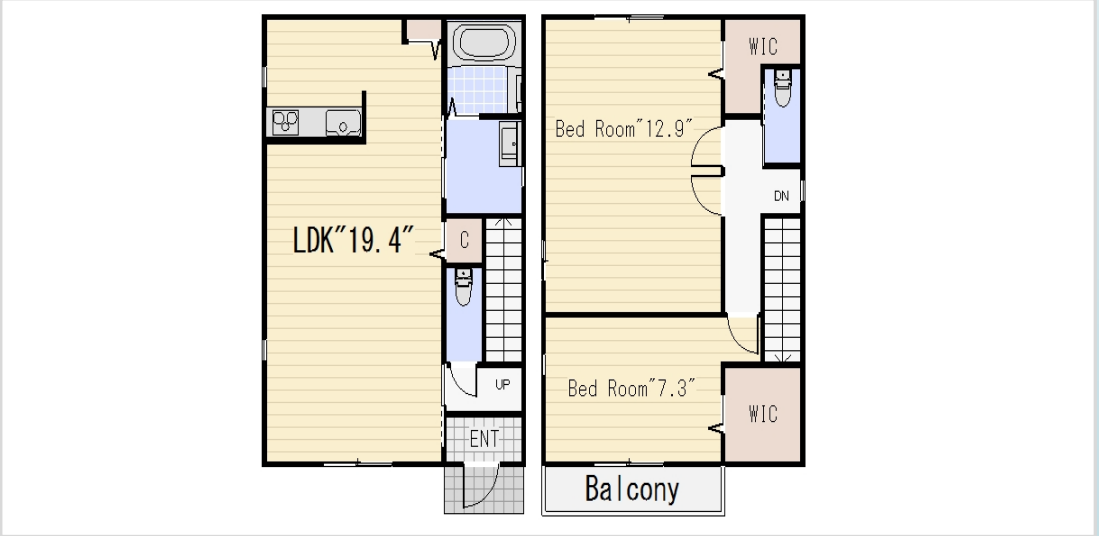
File number  
Z – 1310

CITY	Zama-Shi
Unit Type	House
Size (Square feet)	1048 Square feet
Year Built	2023

Rent Amount	195,000 yen
Appreciation fee	195,000 yen
Commission	214,500 yen
Security Deposit	195,000 yen
Total	799,500 yen + Renter's Insurance

Bedrooms	2 rooms
Bathroom	1 full bath + 2 toilet
Tatami Room	0
Parking Space	2 car park
Pet	No

Distance from Camp Zama (Drive)	11 minutes
Distance from closest station (walking)	Minami Rinkan (Odakyu-Enoshima line) 25 minutes





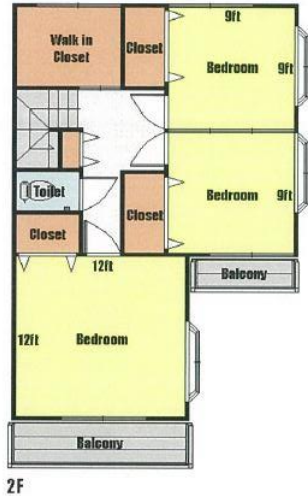
File number  
E-1117

CITY	Ebina-Shi
Unit Type	House
Size (Square feet)	1015 Square feet
Year Built	1996

Rent Amount	194,000 yen	Appliance included
Appreciation fee	194,000 yen	
Commission	213,400 yen	
Security Deposit	194,000 yen	
Total	795,400 yen	+ Renter's Insurance

Bedrooms	3 rooms
Bathroom	1 full bath + 2 toilet
Tatami Room	1 room
Parking Space	1 car parking
Pet	No

Distance from Camp Zama (Drive)	20 minutes
Distance from closest station (walking)	Ebina (Odakyu-line / Sagami-line/ Sotetsu-main-line)  17 minutes



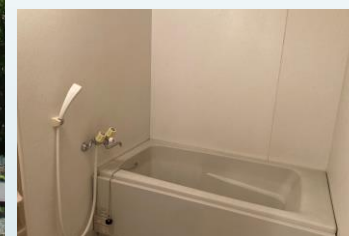
File number  
E-1225

CITY	Ebina-Shi
Unit Type	Apartment
Size (Square feet)	989 Square feet
Year Built	1992

Rent Amount	170,000 yen
Appreciation fee	170,000 yen
Commission	187,000 yen
Security Deposit	170,000 yen
Total	697,000 yen + Renter's Insurance

Bedrooms	3 rooms
Bathroom	1 full bath + 1 toilet
Tatami Room	1 room
Parking Space	0 car park *Paid car parking space available (150cm height only)
Pet	No

Distance from Camp Zama (Drive)	17 minutes
Distance from closest station (walking)	Ebina (OdakyuOdawara- line / Sotetsu-line, Sagami-line)  6 minutes





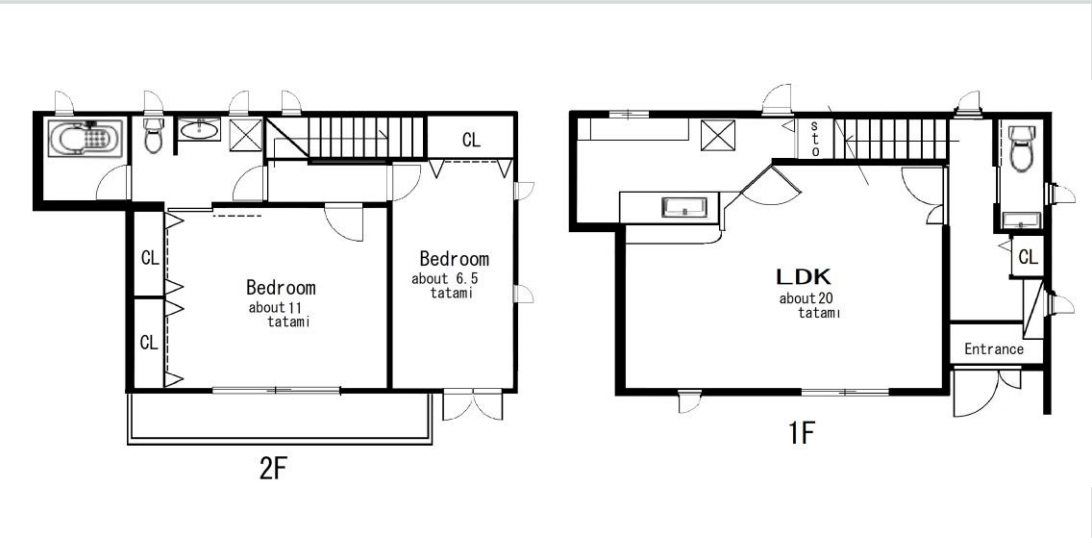
File number  
R -1238

CITY	Yamato-Shi
Unit Type	Town House
Size (Square feet)	957 Square feet
Year Built	2013

Rent Amount	177,000 yen
Appreciation fee	177,000 yen
Commission	194,700 yen
Security Deposit	177,000 yen
Total	725,700 yen + Renter's Insurance

Bedrooms	2 rooms
Bathroom	1 full bath + 2 toilet
Tatami Room	0 room
Parking Space	1 car park
Pet	No

Distance from Camp Zama (Drive)	15 minutes
Distance from closest station (walking)	Minami Rinkan (Odakyu Enoshima- line)  6 minutes



File number  
G -2228

CITY	Sagamihara-Shi
Unit Type	Apartment
Size (Square feet)	843 Square feet
Year Built	2010

Rent Amount	200,000 yen
Appreciation fee	200,000 yen
Commission	220,000 yen
Security Deposit	200,000 yen
Total	820,000 yen + Renter's Insurance

Bedrooms	2 rooms
Bathroom	1 full bath + 1 toilet
Tatami Room	0 room
Parking Space	1 car park
Pet	No

Distance from Camp Zama (Drive)	35 minutes
Distance from closest station (walking)	JR Sagamihara (JR Yokohama-line) 10 minutes





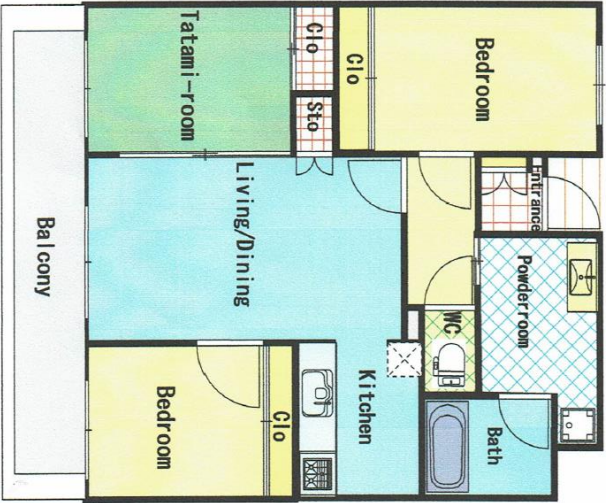
File number  
G -0223

CITY	Sagamihara-Shi
Unit Type	Apartment
Size (Square feet)	824 Square feet
Year Built	2004

Rent Amount	200,000 yen
Appreciation fee	200,000 yen
Commission	220,000 yen
Security Deposit	200,000 yen
Total	820,000 yen + Renter's Insurance

Bedrooms	3 rooms
Bathroom	1 full bath + 1 toilet
Tatami Room	1 room
Parking Space	1 car park
Pet	No

Distance from Camp Zama (Drive)	15 minutes
Distance from closest station (walking)	Odakyu-Sagamihara (Odakyu-Odawara-line)  5 minutes



File number  
A -0414

CITY	Ayase-Shi
Unit Type	Apartment
Size (Square feet)	767 Square feet
Year Built	1994

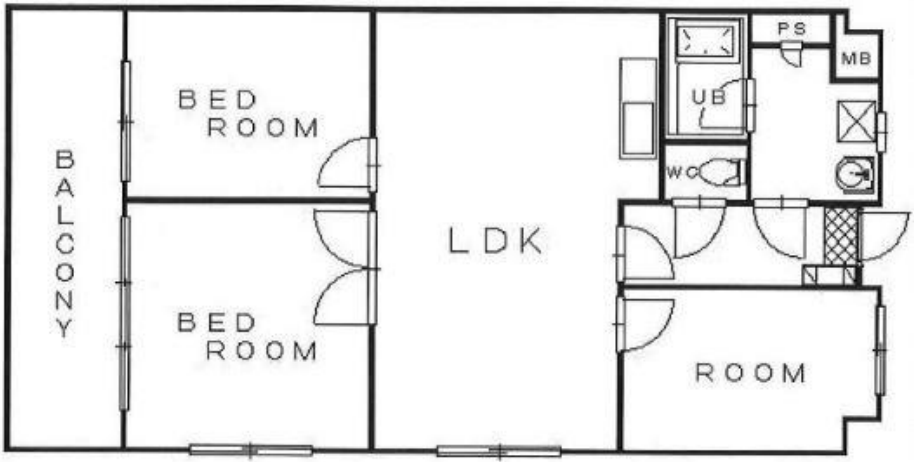
Rent Amount	146,000 yen
Appreciation fee	146,000 yen
Commission	160,600 yen
Security Deposit	146,000 yen
Total	598,500 yen + Renter's Insurance

Bedrooms	3 rooms
Bathroom	1 full bath + 1 toilet
Tatami Room	0 room
Parking Space	1 car park
Pet	No

Distance from Camp Zama (Drive)	20 minutes
Distance from closest station (walking)	Kashiwadai or Sagamino (Sotetsu-main-line)  15 minutes



1.2 x 1.8"





File number  
E -2014

CITY	Ebina-Shi
Unit Type	Apartment
Size (Square feet)	766 Square feet
Year Built	2016

Rent Amount	210,000 yen
Appreciation fee	210,000 yen
Commission	231,000 yen
Security Deposit	210,000 yen
Total	861,000 yen + Renter's Insurance

Bedrooms	3 rooms	Distance from Camp Zama (Drive)	16 minutes
Bathroom	1 full bath + 1 toilet	Distance from closest station (walking)	Ebina (Odakyu-Odawara-line, Sotetsu-line, Sagami-line)
Tatami Room	0 room		3 minutes
Parking Space	1 car park		
Pet	No		



1.2 x 1.8"



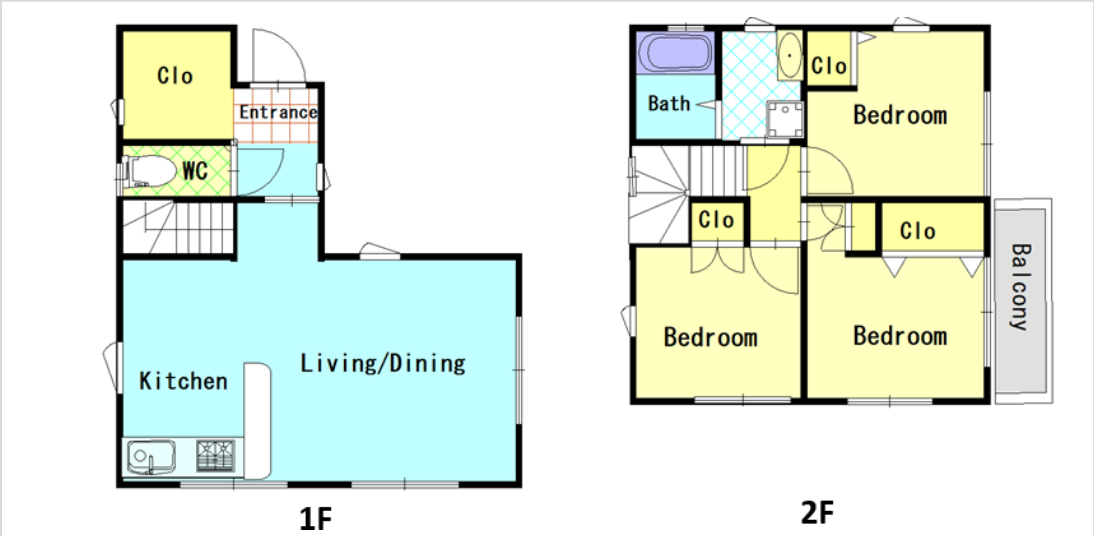
File number  
G -2271

CITY	Sagamihara-Shi
Unit Type	House
Size (Square feet)	721 Square feet
Year Built	2017

Rent Amount	160,000 yen
Appreciation fee	160,000 yen
Commission	176,000 yen
Security Deposit	160,000 yen
Total	656,000 yen + Renter's Insurance

Bedrooms	3 rooms
Bathroom	1 full bath + 2 toilet
Tatami Room	0
Parking Space	1 car park
Pet	Negotiable

Distance from Camp Zama (Drive)	20 minutes
Distance from closest station (walking)	Sagami Ono (Odakyu-line) 25 minutes





File number  
Z-1077


CITY	Zama-Shi
Unit Type	Apartment
Size (Square feet)	668 Square feet
Year Built	2007

Rent Amount	152,000 yen
Appreciation fee	152,000 yen
Commission	167,200 yen
Security Deposit	152,000 yen
Total	623,200 yen + Renter's Insurance

Bedrooms	2 rooms
Bathroom	1 full bath + 1 toilet
Tatami Room	0
Parking Space	1 car park
Pet	No

Distance from Camp Zama (Drive)	7 minutes
Distance from closest station (walking)	Sobudaimae (Odakyu-Odawara- line)  19 minutes





# Should you have any question or need further information, please feel free to contact us.

## Off-Post housing Counselor

- Nagaoka: kenichi.nagaoka.ln@army.mil
- Ito: natsuko.ito.ln@army.mil

---

## Business Hours

Mon to Fri : 0800-1200, 1300-1600 / Thu : 1300-1600

Sat, Sun, and Holiday : Closed

---

**\*You are required to report to the Housing Services Office serving your existing and new duty stations before you make housing arrangements for renting, leasing, or purchasing any off-post housing.**

**\*This list is updated every 1<sup>st</sup>, 3<sup>rd</sup> Monday.**