

# Welcome to Army Camp Zama

## OFF-POST Housing

The Housing Service Office (HSO) is here to help you find a suitable house or apartment. The objective of the HSO is provide all US Forces personnel with a personalized service to assist them in locating suitable, non-discriminatory, community housing and that such housing is located reasonably near the applicant's duty station. We will provide all of the assistance we possibly can. Please feel free to contact us with any questions or problems about off-base housing.

---

### Business Hours

Mon to Fri : 0800-1200, 1300-1600

Sat, Sun, and Holiday : Closed

---

**\*You are required to report to the Housing Services Office serving your existing and new duty stations before you make housing arrangements for renting, leasing, or purchasing any off-post housing.**

**\*This list is updated every 1<sup>st</sup>, 3<sup>rd</sup> Monday.**

**\*Listing in Housing Office is updated every Monday.**

# ZAMA RENTAL DESCRIPTION FOR OFF-POST HOUSING

File number  
R-1213

CITY	Yamato-Shi
Unit Type	Apartment
Size (Square feet)	1980.00 Square feet
Year Built	1995

Rent Amount	270,000 yen
Appreciation fee	270,000 yen
Commission	297,000 yen
Security Deposit	270,000 yen
Total	1,107,000 yen + Renter's Insurance

Bedrooms	3 rooms
Bathroom	1 full bath + 2 toilet
Tatami Room	0 room
Parking Space	1 car park
Pet	No

Distance from Camp Zama (Drive)	20 minutes
Distance from closest station (walking)	Chuo Rinkan (Odakyu Enoshima / Denen Toshi-line) 3 minutes



File number  
SA-2214

CITY	Machida-Shi
Unit Type	Town House
Size (Square feet)	1641 Square feet
Year Built	1991

Rent Amount	240,000 yen
Appreciation fee	240,000 yen
Commission	264,000 yen
Security Deposit	240,000 yen
Total	984,000 yen + Renter's Insurance

Bedrooms	4 rooms	Distance from Camp Zama (Drive)	30 minutes
Bathroom	1 full bath + 2 toilet	Distance from closest station (walking)	Naruse(Yokohama- line) or Tsukushino(Tokyu Denen Toshi-line)
Tatami Room	1 room		15 minutes each
Parking Space	1 car park		
Pet	Negotiable		



1.2 x 1.8"

File number  
G-2173

CITY	Sagamihara-Shi
Unit Type	Apartment
Size (Square feet)	1626.9 Square feet
Year Built	1989

Rent Amount	220,000 yen
Appreciation fee	220,000 yen
Commission	242,000 yen
Security Deposit	220,000 yen
Total	902,000 yen + Renter's Insurance

Bedrooms	2 rooms	Distance from Camp Zama (Drive)	35 minutes
Bathroom	1 full bath + 2 toilet	Distance from closest station (walking)	Yabe (JR Yokohama-line) 10 minutes
Tatami Room	1 room		
Parking Space	1 car park		
Pet	Negotiable		



1.2 x 1.8"





# ZAMA RENTAL DESCRIPTION FOR OFF-POST HOUSING

File number  
G-2145

CITY	Sagamihara-Shi
Unit Type	House
Size (Square feet)	1380 Square feet
Year Built	2011

Rent Amount	225,000 yen
Appreciation fee	225,000 yen
Commission	247,500 yen
Security Deposit	225,000 yen
Total	922,500 yen + Renter's Insurance

2edrooms	2 rooms	Distance from Camp Zama (Drive)	20 minutes
Bathroom	1 full bath + 2 toilet	Distance from closest station (walking)	Sagami-Ono (Odakyu Odawara/Enoshima -line)
Tatami Room	0 room		10 minutes
Parking Space	1 car park		
Pet	No		



# ZAMA RENTAL DESCRIPTION FOR OFF-POST HOUSING

File number  
**G-2143**

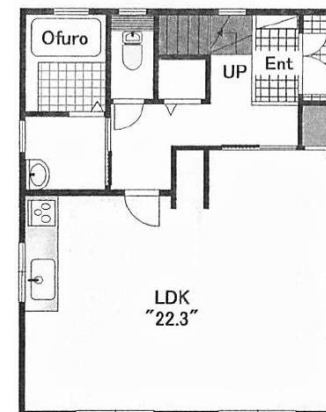
CITY	Sagamihara-Shi
Unit Type	House
Size (Square feet)	1311 Square feet
Year Built	2011

Rent Amount	228,000 yen
Appreciation fee	228,000 yen
Commission	250,800 yen
Security Deposit	228,000 yen
Total	934,800 yen + Renter's Insurance

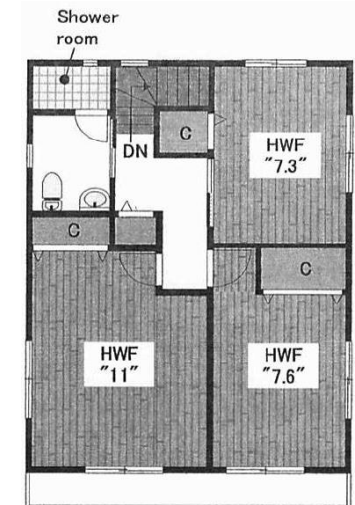
Bedrooms	3 rooms	Distance from Camp Zama (Drive)	20 minutes
Bathroom	1 full bath + 2 toilet	Distance from closest station (walking)	SagamiOno (Odakyu -Odawara-line) or Higashirinkan (Odakyu-Enoshima-line)
Tatami Room	0 room		12 minutes each
Parking Space	2 car park		
Pet	No		



1F



2F





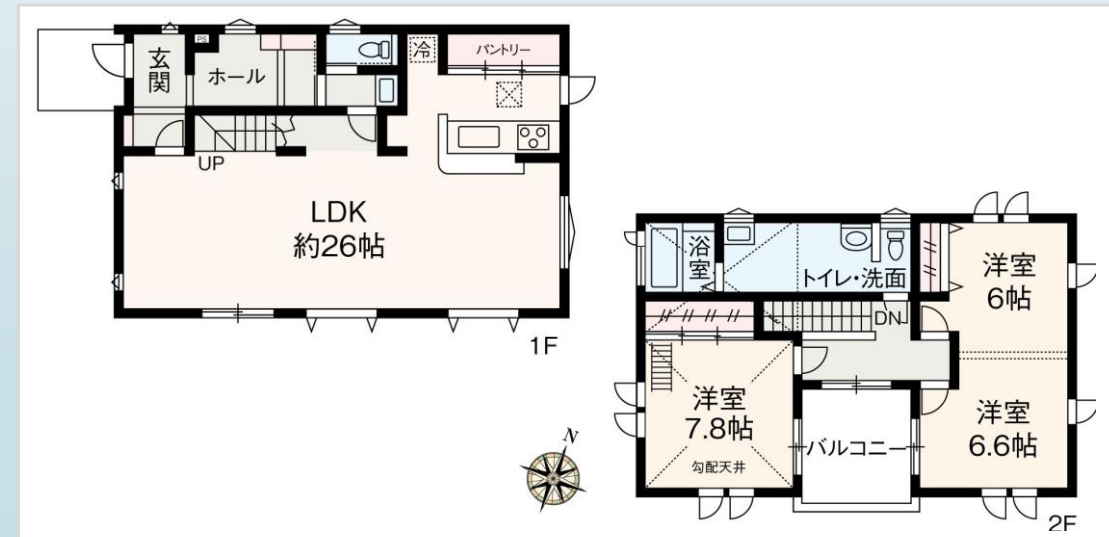
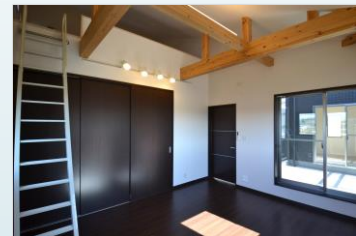
File number  
G-2248

CITY	Sagamihara-Shi
Unit Type	House
Size (Square feet)	1291.3 Square feet
Year Built	2012

Rent Amount	230,000 yen
Appreciation fee	230,000 yen
Commission	253,000 yen
Security Deposit	230,000 yen
Total	943,000 yen + Renter's Insurance

Bedrooms	2 rooms
Bathroom	1 full bath + 2 toilet
Tatami Room	0 room
Parking Space	1 car park
Pet	No

Distance from Camp Zama (Drive)	3 minutes
Distance from closest station (walking)	Odakyu-Sagamihara or Soubudaimae (Odakyu-Odawara-line) 15 minutes each



# ZAMA RENTAL DESCRIPTION FOR OFF-POST HOUSING

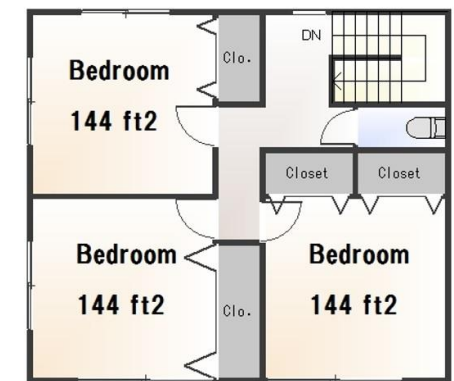
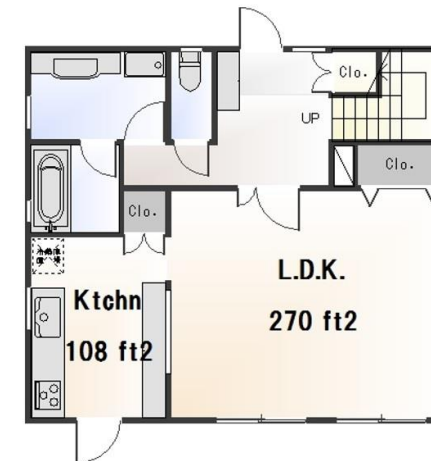
File number  
Z -0527

CITY	Zama-Shi
Unit Type	Town House
Size (Square feet)	1283 Square feet
Year Built	1995

Rent Amount	200,000 yen
Appreciation fee	200,000 yen
Commission	220,000 yen
Security Deposit	200,000 yen
Total	820,000 yen + Renter's Insurance

Bedrooms	3 rooms
Bathroom	1 full bath + 2 toilet
Tatami Room	N/A
Parking Space	2 car park
Pet	Negotiable

Distance from Camp Zama (Drive)	10 minutes
Distance from closest station (walking)	Yabe(Yokohama-line) 8 minutes





File number  
G -2094

CITY	Sagamihara-Shi
Unit Type	House
Size (Square feet)	1281 Square feet
Year Built	2003

Rent Amount	200,000 yen
Appreciation fee	200,000 yen
Commission	220,000 yen
Security Deposit	200,000 yen
Total	820,000 yen + Renter's Insurance

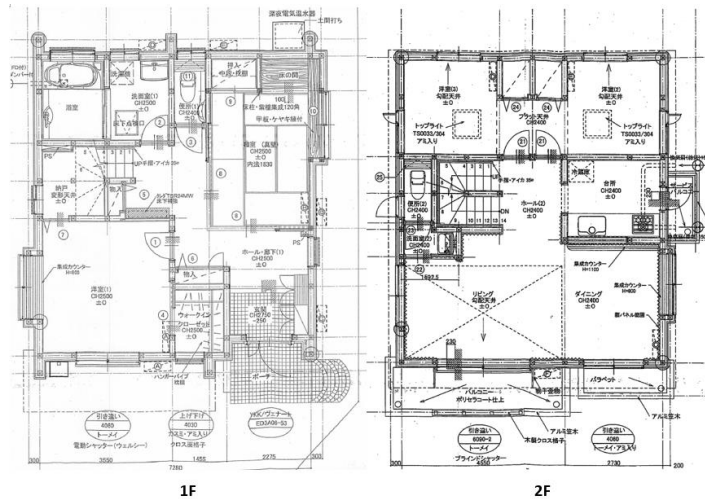
Bedrooms	2 rooms
Bathroom	1 full bath + 1 toilet
Tatami Room	1 room
Parking Space	1 car park
Pet	No

Distance from Camp Zama (Drive)	20 minutes
Distance from closest station (walking)	Sagami-Ono (Odakyu Odawara-line) or Kobuchi and Machida (Yokohama-line)  25 minutes each

## ZAMA RENTAL DESCRIPTION FOR OFF-POST HOUSING



1.2 x 1.8"



# ZAMA RENTAL DESCRIPTION FOR OFF-POST HOUSING

File number  
**G-1072**

CITY	Sagamihara-Shi
Unit Type	House
Size (Square feet)	1275 Square feet
Year Built	2010

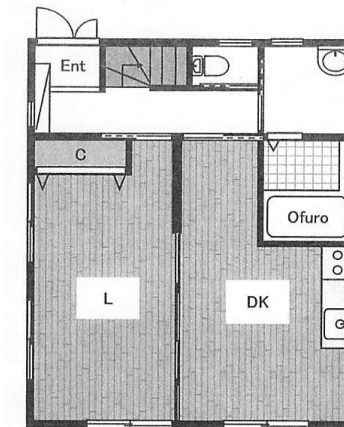
Rent Amount	220,000 yen
Appreciation fee	220,000 yen
Commission	242,000 yen
Security Deposit	220,000 yen
Total	902,000 yen + Renter's Insurance

Bedrooms	2 rooms
Bathroom	1 full & 1 half bath + 2 toilet
Tatami Room	0 room
Parking Space	2 car park
Pet	No

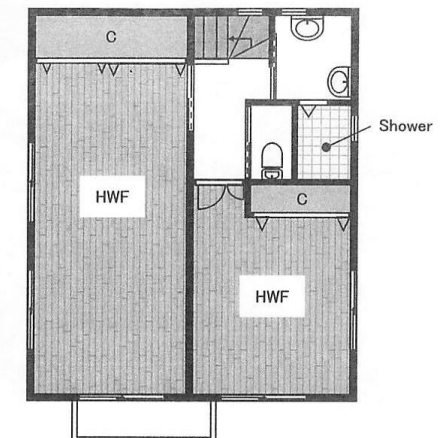
Distance from Camp Zama (Drive)	20 minutes
Distance from closest station (walking)	SagamiOno (Odakyu-Odawara-line) or Higashirinkan (Odakyu-Enoshima-line) 10 minutes each



1.2 x 1.8"



1F



2F



# ZAMA RENTAL DESCRIPTION FOR OFF-POST HOUSING

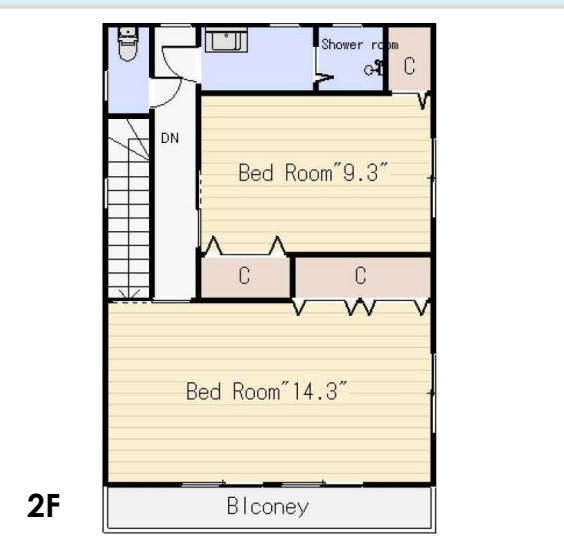
File number  
G-1082

CITY	Sagamihara-Shi
Unit Type	House
Size (Square feet)	1270 Square feet
Year Built	2011

Rent Amount	211,000 yen
Appreciation fee	211,000 yen
Commission	232,100 yen
Security Deposit	211,000 yen
Total	865,100 yen + Renter's Insurance

Bedrooms	2 rooms
Bathroom	1 full bath + 2 toilet
Tatami Room	0 room
Parking Space	1 car park
Pet	No

Distance from Camp Zama (Drive)	20 minutes
Distance from closest station (walking)	SagamiOno (Odakyu-Odawara-line) or Higashirinkan (Odakyu-Enoshima-line) 12 minutes each





ZAMA RENTAL DESCRIPTION FOR OFF-POST HOUSING

File number  
R -2061

CITY	Yamato-Shi
Unit Type	Apartment
Size (Square feet)	1205 Square feet
Year Built	1992

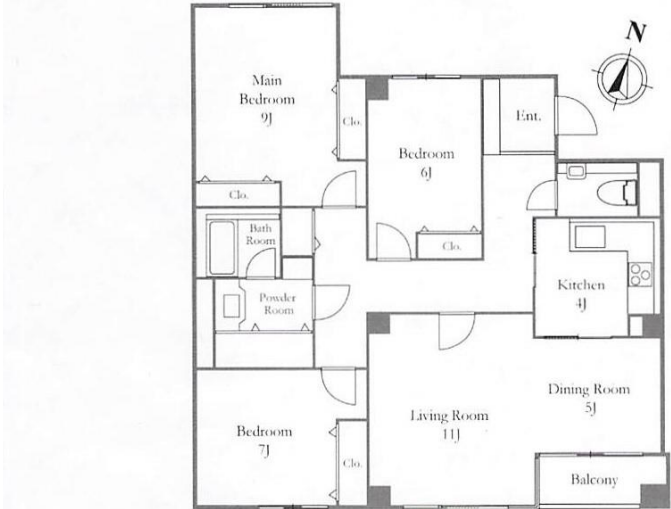
Rent Amount	213,000 yen
Appreciation fee	213,000 yen
Commission	234,300 yen
Security Deposit	213,000 yen
Total	873,300 yen + Renter's Insurance

Bedrooms	3 rooms
Bathroom	1 full bath + 1 toilet
Tatami Room	N/A
Parking Space	1 car park
Pet	No

Distance from Camp Zama (Drive)	15 minutes
Distance from closest station (walking)	Minami-Rinkan (Odakyu Enoshima-line)  5 minutes



1.2 x 1.8"



ZAMA RENTAL DESCRIPTION FOR OFF-POST HOUSING

File number  
Z -2046

CITY	Zama-Shi
Unit Type	House
Size (Square feet)	1205 Square feet
Year Built	1996

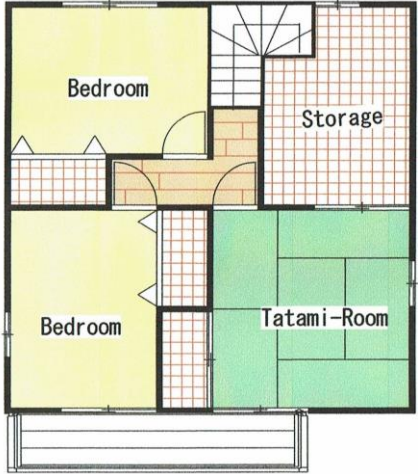
Rent Amount	180,000 yen
Appreciation fee	180,000 yen
Commission	198,000 yen
Security Deposit	180,000 yen
Total	738,000 yen + Renter's Insurance

Bedrooms	2 rooms
Bathroom	1 full bath + 1 toilet
Tatami Room	1 room
Parking Space	1 car park
Pet	Yes

Distance from Camp Zama (Drive)	10 minutes
Distance from closest station (walking)	Soubudaimae(Odak yu-Odawara-line) 20 minutes



1.2 x 1.8"



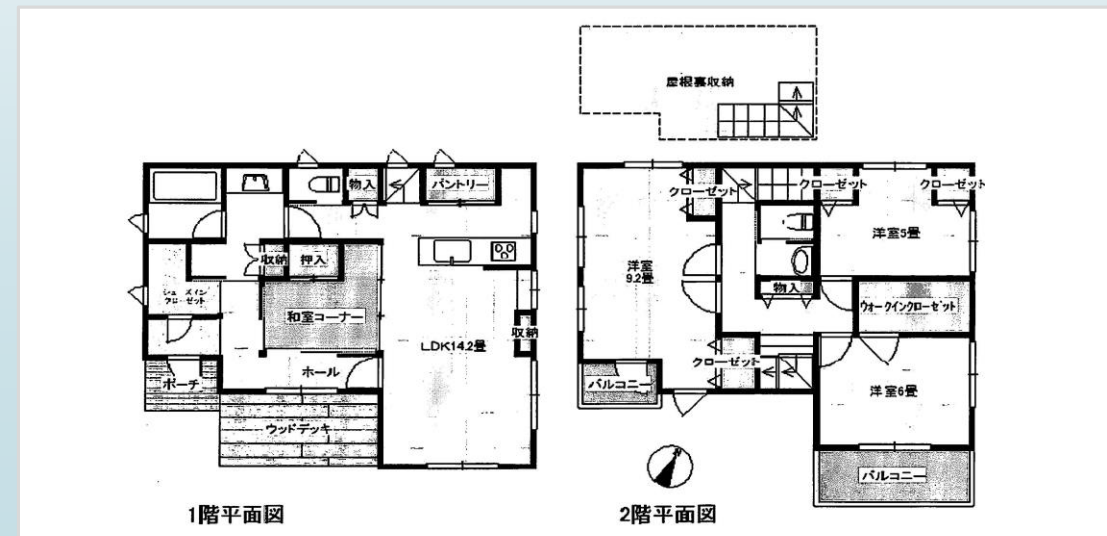
# ZAMA RENTAL DESCRIPTION FOR OFF-POST HOUSING

File number  
SA-2216

CITY	Machida-Shi
Unit Type	House
Size (Square feet)	1167 Square feet
Year Built	2016

Rent Amount	208,000 yen
Appreciation fee	208,000 yen
Commission	228,800 yen
Security Deposit	208,000 yen
Total	852,800 yen + Renter's Insurance

Bedrooms	3 rooms	Distance from Camp Zama (Drive)	40 minutes
Bathroom	1 full bath + 2 toilet	Distance from closest station (walking)	Fuchinobe (Yokohama-line)
Tatami Room	1 room		50 minutes
Parking Space	2 car park		
Pet	No		





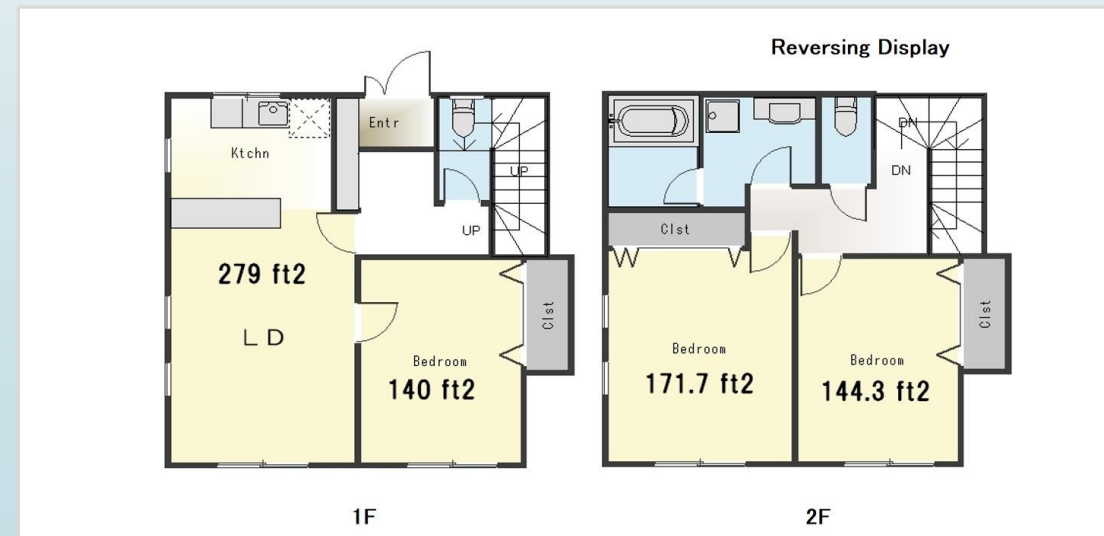
# ZAMA RENTAL DESCRIPTION FOR OFF-POST HOUSING

File number  
Z -0618

CITY	Zama-Shi
Unit Type	Town House
Size (Square feet)	1140.45 Square feet
Year Built	1999

Rent Amount	180,000 yen
Appreciation fee	180,000 yen
Commission	198,000 yen
Security Deposit	180,000 yen
Total	738,000 yen + Renter's Insurance

Bedrooms	3 rooms	Distance from Camp Zama (Drive)	15 minutes
Bathroom	1 full bath + 2 toilet	Distance from closest station (walking)	Zama(Odakyu-Odawara-line) 8 minutes
Tatami Room	0 room		
Parking Space	2 car park		
Pet	Negotiable		



# ZAMA RENTAL DESCRIPTION FOR OFF-POST HOUSING

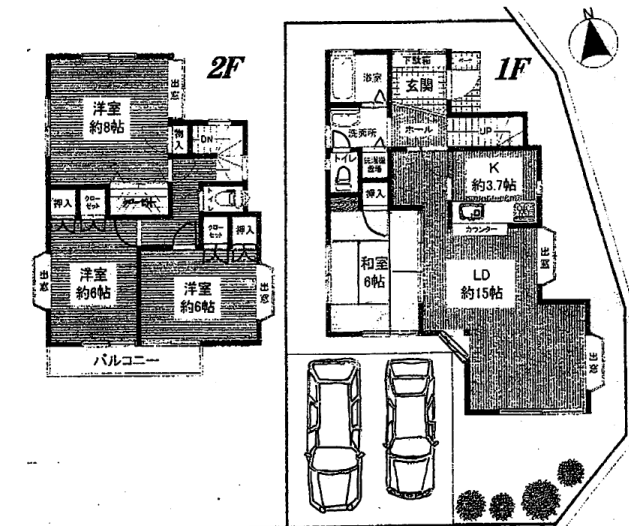
File number  
Z-2014

CITY	Zama-Shi
Unit Type	House
Size (Square feet)	1097.00 Square feet
Year Built	1990

Rent Amount	190,000 yen
Appreciation fee	190,000 yen
Commission	209,000 yen
Security Deposit	190,000 yen
Total	779,000 yen + Renter's Insurance

Bedrooms	3 rooms
Bathroom	1 full bath + 2 toilet
Tatami Room	1 room
Parking Space	1 car park
Pet	No

Distance from Camp Zama (Drive)	8 minutes
Distance from closest station (walking)	Sobudai Mae (Odakyu Odawara-line) 18 minutes





# ZAMA RENTAL DESCRIPTION FOR OFF-POST HOUSING

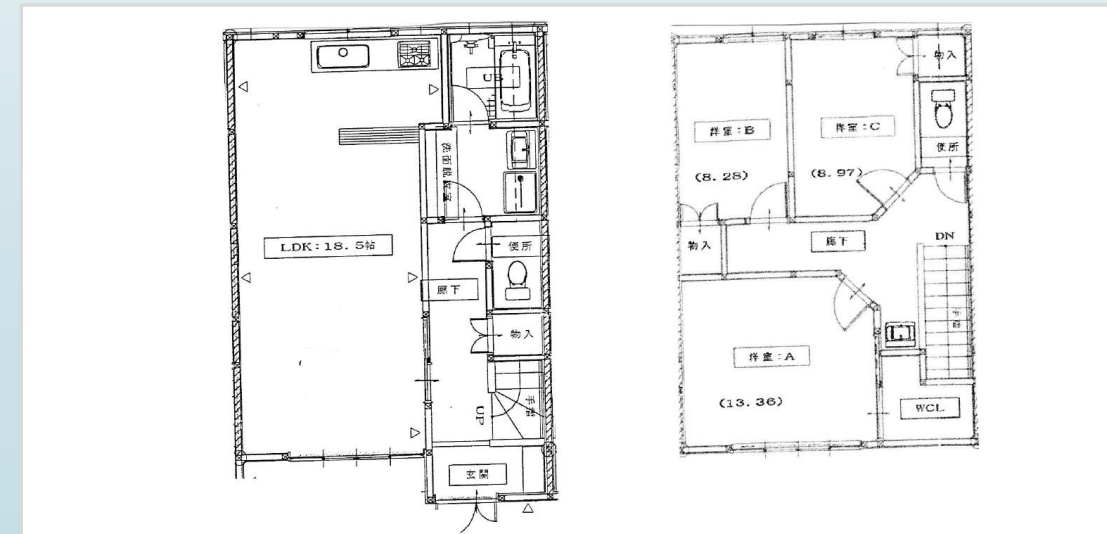
File number  
A -0640

CITY	Ayase-Shi
Unit Type	Town House
Size (Square feet)	1063 Square feet
Year Built	2002

Rent Amount	175,000 yen
Appreciation fee	175,000 yen
Commission	192,500 yen
Security Deposit	175,000 yen
Total	717,500 yen + Renter's Insurance

Bedrooms	3 rooms
Bathroom	1 full bath + 2 half bath
Tatami Room	N/A
Parking Space	2 car park
Pet	Negotiable

Distance from Camp Zama (Drive)	20 minutes
Distance from closest station (walking)	Kashiwadai (Sotetsu-main-line) 20 minutes





ZAMA RENTAL DESCRIPTION FOR OFF-POST HOUSING

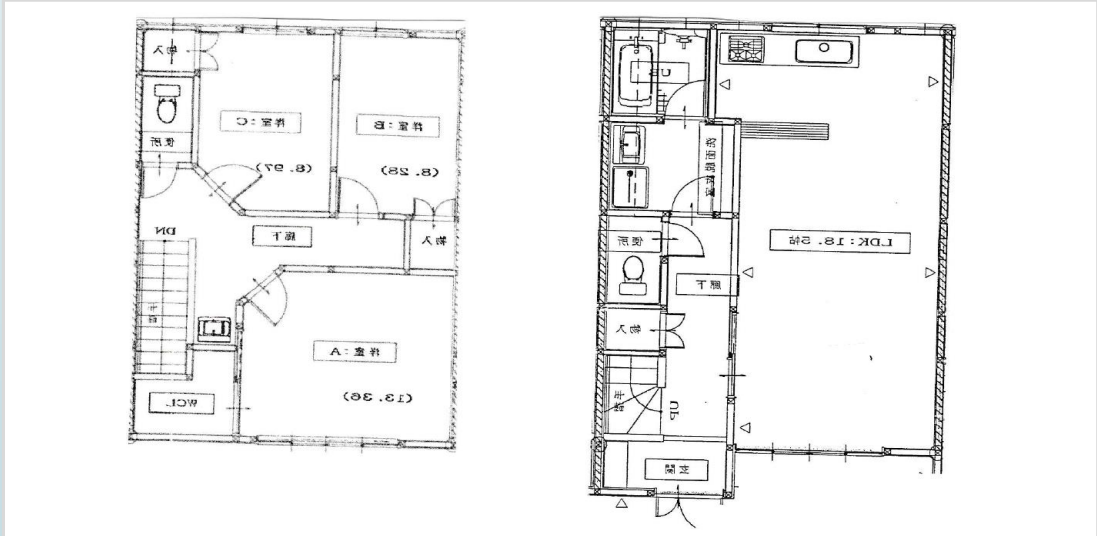
File number  
A -0641

CITY	Ayase-Shi
Unit Type	Town House
Size (Square feet)	1063 Square feet
Year Built	2002

Rent Amount	175,000 yen
Appreciation fee	175,000 yen
Commission	192,500 yen
Security Deposit	175,000 yen
Total	717,500 yen + Renter's Insurance

Bedrooms	3 rooms
Bathroom	1 full bath + 2 half bath
Tatami Room	N/A
Parking Space	2 car park
Pet	Negotiable

Distance from Camp Zama (Drive)	20 minutes
Distance from closest station (walking)	Kashiwadai (Sotetsu-main-line) 20 minutes



File number  
Z-1188

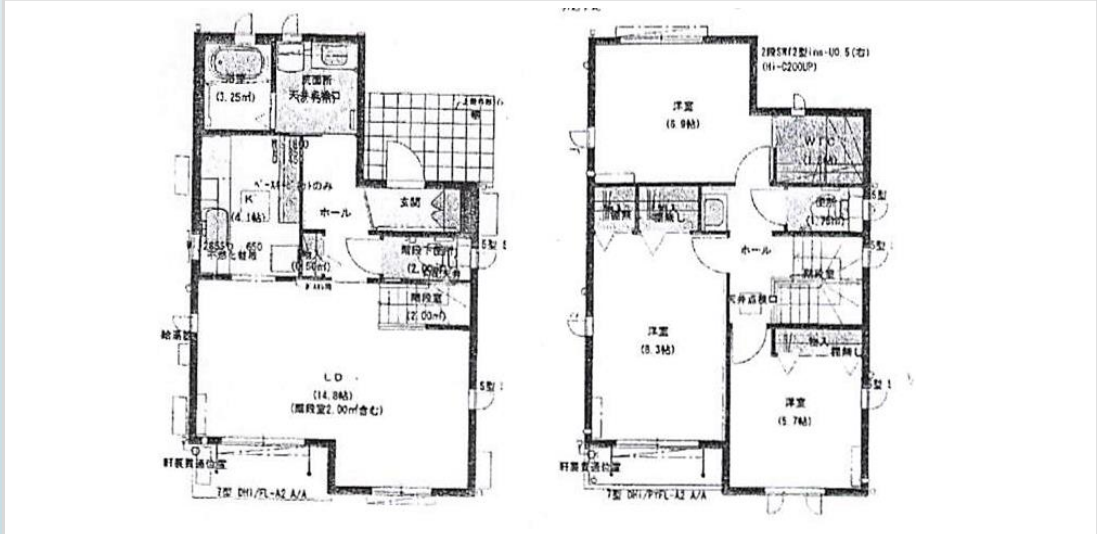
CITY	Zama-Shi
Unit Type	House
Size (Square feet)	1061 Square feet
Year Built	2013

Rent Amount	193,000 yen
Appreciation fee	193,000 yen
Commission	212,300 yen
Security Deposit	193,000 yen
Total	791,300 yen + Renter's Insurance

Bedrooms	3 rooms
Bathroom	1 full bath + 2 toilet
Tatami Room	N/A
Parking Space	1 car park
Pet	No

Distance from Camp Zama (Drive)	8 minutes
Distance from closest station (walking)	Zama (Odakyu-Odawara-line) 20 minutes

ZAMA RENTAL DESCRIPTION FOR OFF-POST HOUSING

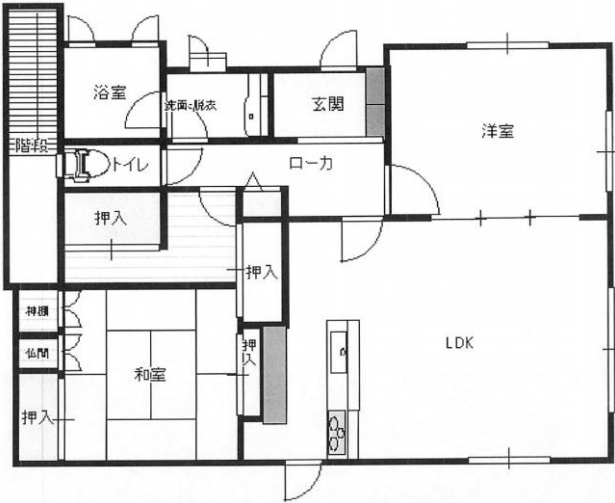


File number  
G-1110

CITY	Sagamihara-Shi
Unit Type	Duplex
Size (Square feet)	965.60 Square feet
Year Built	1996

Rent Amount	175,000 yen
Appreciation fee	175,000 yen
Commission	192,500 yen
Security Deposit	175,000 yen
Total	717,500 yen + Renter's Insurance

Bedrooms	1 rooms	Distance from Camp Zama (Drive)	25 minutes
Bathroom	1 full bath + 1 toilet	Distance from closest station (walking)	Sagamiono (Odakyu Odawara- line)  15 minutes
Tatami Room	1 room		
Parking Space	2 car park		
Pet	No		





# ZAMA RENTAL DESCRIPTION FOR OFF-POST HOUSING

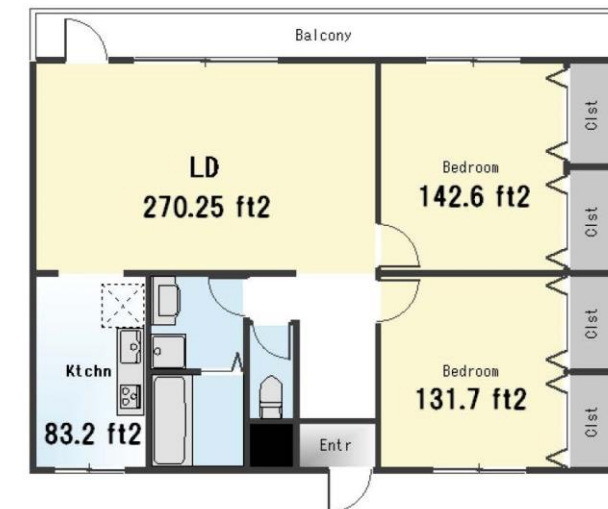
File number  
**Z-2162**

CITY	Zama-Shi
Unit Type	Apartment
Size (Square feet)	871 Square feet
Year Built	1991

Rent Amount	150,000 yen
Appreciation fee	150,000 yen
Commission	165,000 yen
Security Deposit	150,000 yen
Total	615,000 yen + Renter's Insurance

Bedrooms	2 rooms
Bathroom	1 full bath + 1 toilet
Tatami Room	0 room
Parking Space	1 car park
Pet	Negotiable

Distance from Camp Zama (Drive)	10 minutes
Distance from closest station (walking)	Zama (Odakyu-Odawara-line) 10 minutes



ZAMA RENTAL DESCRIPTION FOR OFF-POST HOUSING

File number  
G-2071

CITY	Sagamihara-Shi
Unit Type	Duplex
Size (Square feet)	819 Square feet
Year Built	2007

Rent Amount	160,000 yen
Appreciation fee	160,000 yen
Commission	176,000 yen
Security Deposit	160,000 yen
Total	656,000 yen + Renter's Insurance

Bedrooms	2 rooms
Bathroom	1 full bath + 1 toilet
Tatami Room	0 room
Parking Space	2 car park
Pet	Negotiable

Distance from Camp Zama (Drive)	5 minutes
Distance from closest station (walking)	Shimomizo (Sagami-line) 25 minutes



ZAMA RENTAL DESCRIPTION FOR OFF-POST HOUSING

File number  
A -0414

CITY	Ayase-Shi
Unit Type	Apartment
Size (Square feet)	767 Square feet
Year Built	1994

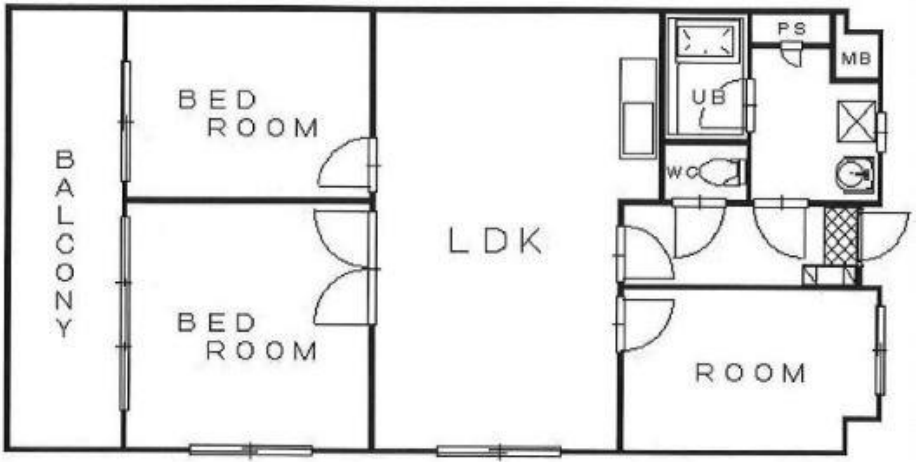
Rent Amount	146,000 yen
Appreciation fee	146,000 yen
Commission	160,600 yen
Security Deposit	146,000 yen
Total	598,500 yen + Renter's Insurance

Bedrooms	3 rooms
Bathroom	1 full bath + 1 toilet
Tatami Room	0 room
Parking Space	1 car park
Pet	No


Distance from Camp Zama (Drive)	20 minutes
Distance from closest station (walking)	Kashiwadai or Sagamino (Sotetsu-main-line)  15 minutes



1.2 x 1.8"







# Should you have any question or need further information, please feel free to contact us.

## Off-Post housing Counselor

- Nagaoka: [kenichi.nagaoka.ln@mail.mil](mailto:kenichi.nagaoka.ln@mail.mil)
- Ito: [natsuko.ito.ln@mail.mil](mailto:natsuko.ito.ln@mail.mil)

---

## Business Hours

Mon to Fri : 0800-1200, 1300-1600

Sat, Sun, and Holiday : Closed

---

**\*You are required to report to the Housing Services Office serving your existing and new duty stations before you make housing arrangements for renting, leasing, or purchasing any off-post housing.**

**\*This list is updated every 1<sup>st</sup>, 3<sup>rd</sup> Monday.**

**\*Listing in Housing Office is updated every Monday.**