

Welcome to Army Camp Zama

OFF-POST Housing

The Housing Service Office (HSO) is here to help you find a suitable house or apartment. The objective of the HSO is provide all US Forces personnel with a personalized service to assist them in locating suitable, non-discriminatory, community housing and that such housing is located reasonably near the applicant's duty station. We will provide all of the assistance we possibly can. Please feel free to contact us with any questions or problems about off-base housing.

Business Hours

Mon to Fri : 0800-1200, 1300-1600

Sat, Sun, and Holiday : Closed

***You are required to report to the Housing Services Office serving your existing and new duty stations before you make housing arrangements for renting, leasing, or purchasing any off-post housing.**

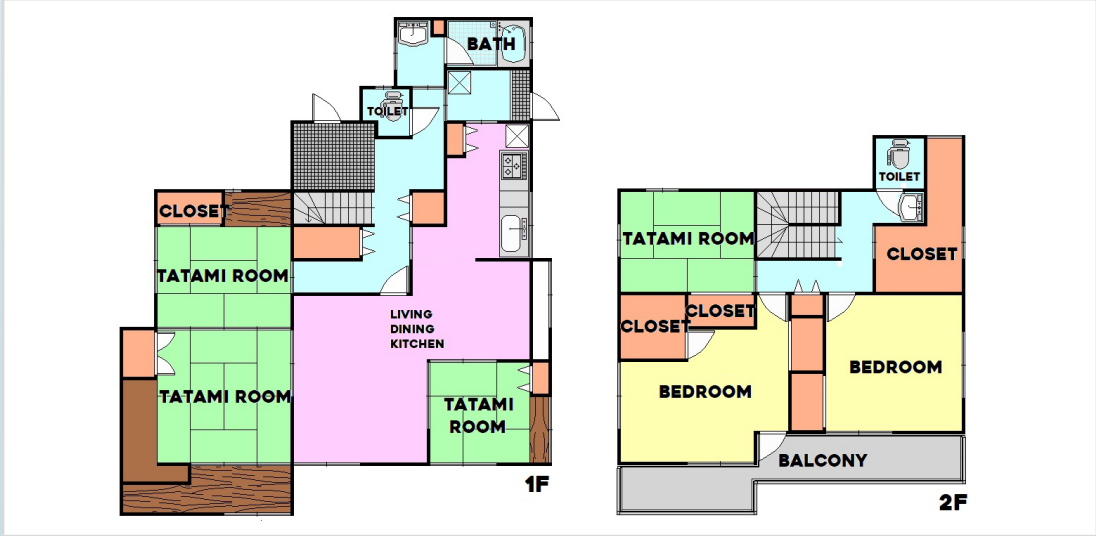
***This list is updated every 1st, 3rd Monday.**

File number
A - 2000

CITY	Ayase-Shi
Unit Type	House
Size (Square feet)	1806 Square feet
Year Built	1990

Rent Amount	253,000 yen *Appliance included
Appreciation fee	253,000 yen
Commission	278,300 yen
Security Deposit	253,000 yen
Total	1,037,300 yen + Renter's Insurance

Bedrooms	3 rooms	Distance from Camp Zama (Drive)	20 minutes
Bathroom	1 full bath + 2 toilet		
Tatami Room	4 room	Distance from closest station (walking)	Kashiwadai (Sotetsu-line)
Parking Space	1 car park		17 minutes
Pet	No		



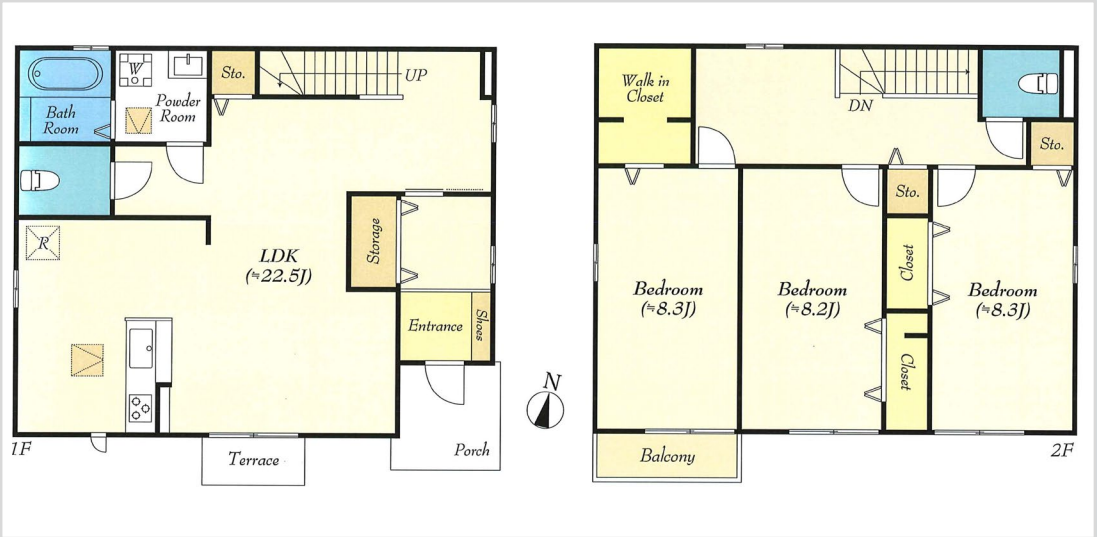
File number
Z - 2195

CITY	Zama-Shi
Unit Type	House
Size (Square feet)	1420 Square feet
Year Built	2022

Rent Amount	235,000 yen
Appreciation fee	235,000 yen
Commission	258,500 yen
Security Deposit	235,000 yen
Total	963,500 yen + Renter's Insurance

Bedrooms	3 rooms
Bathroom	1 full bath + 2 toilet
Tatami Room	0
Parking Space	2 car park
Pet	No

Distance from Camp Zama (Drive)	3 minutes
Distance from closest station (walking)	Sobudaishita (Sagami-line) 15 minutes



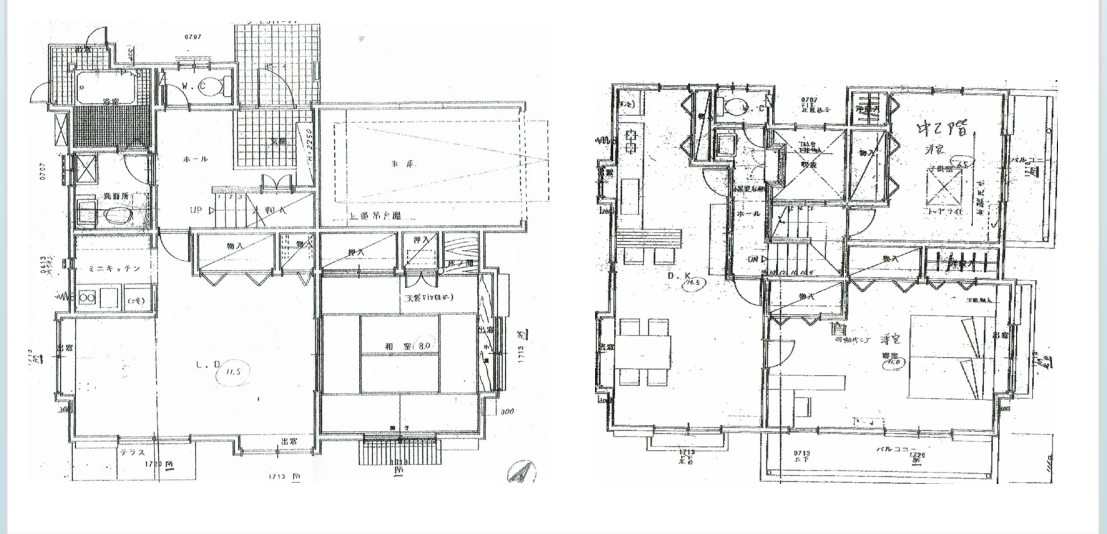
File number
G - 2260

CITY	Sagamihara-Shi
Unit Type	House
Size (Square feet)	1401 Square feet
Year Built	1990

Rent Amount	217,000 yen
Appreciation fee	217,000 yen
Commission	238,700 yen
Security Deposit	217,000 yen
Total	889,700 yen + Renter's Insurance

Bedrooms	3 rooms
Bathroom	1 full bath + 2 toilet
Tatami Room	1 room
Parking Space	0 car park
Pet	Negotiable

Distance from Camp Zama (Drive)	25 minutes
Distance from closest station (walking)	Higashi Rinkan (Odakyu- Enoshima-line) 11 minutes



File number
G - 0182

CITY	Sagamihara-Shi
Unit Type	Apartment
Size (Square feet)	1361 Square feet
Year Built	1991

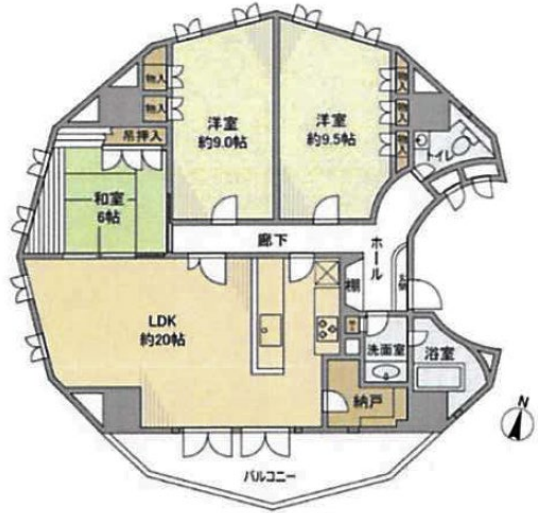
Rent Amount	240,000 yen <small>*Including appliances</small>
Appreciation fee	240,000 yen
Commission	264,000 yen
Security Deposit	240,000 yen
Total	984,000 yen <small>+ Renter's Insurance</small>

Bedrooms	2 rooms
Bathroom	1 full, 1 half bath + 1 toilet
Tatami Room	1 room
Parking Space	1 car park
Pet	Negotiable

Distance from Camp Zama (Drive)	20 minutes
Distance from closest station (walking)	Odakyu-Sagamihara (Odakyu-line) 5 minutes



1.2 x 1.8"



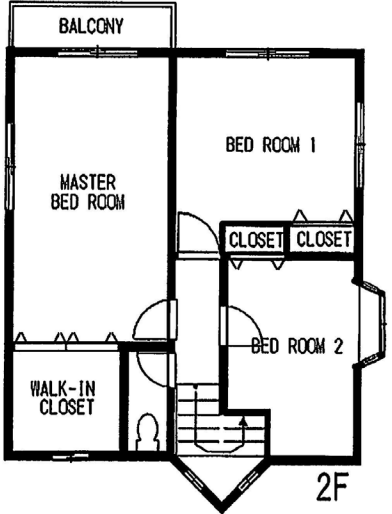
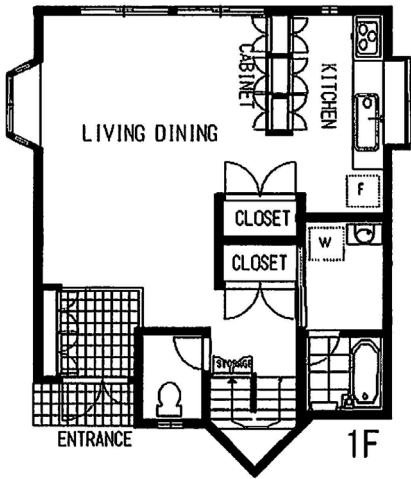
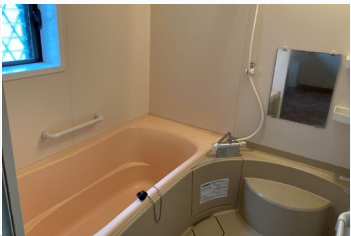
File number
Z - 0714

CITY	Zama-Shi
Unit Type	House
Size (Square feet)	1284 Square feet
Year Built	2003

Rent Amount	209,000 yen
Appreciation fee	209,000 yen
Commission	229,900 yen
Security Deposit	209,000 yen
Total	856,900 yen + Renter's Insurance

Bedrooms	3 rooms
Bathroom	1 full bath + 2 toilet
Tatami Room	0 room
Parking Space	2 car park
Pet	No

Distance from Camp Zama (Drive)	8 minutes
Distance from closest station (walking)	Iriya (Sagami-line) 8 minutes



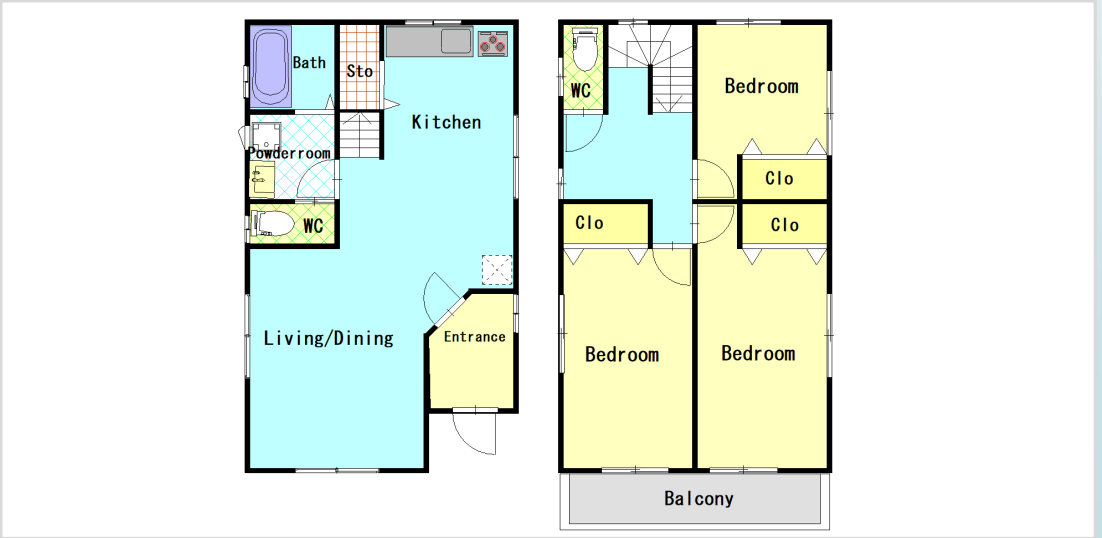
File number
Z - 1261

CITY	Zama-Shi
Unit Type	House
Size (Square feet)	1258 Square feet
Year Built	2020

Rent Amount	242,000 yen Appliance included
Appreciation fee	242,000 yen
Commission	266,200 yen
Security Deposit	242,000 yen
Total	992,200 yen + Renter's Insurance

Bedrooms	3 rooms
Bathroom	1 full bath + 2 toilet
Tatami Room	0 room
Parking Space	1 car park
Pet	No

Distance from Camp Zama (Drive)	5 minutes
Distance from closest station (walking)	Soubudai Shita (Sagami-line) 7 minutes



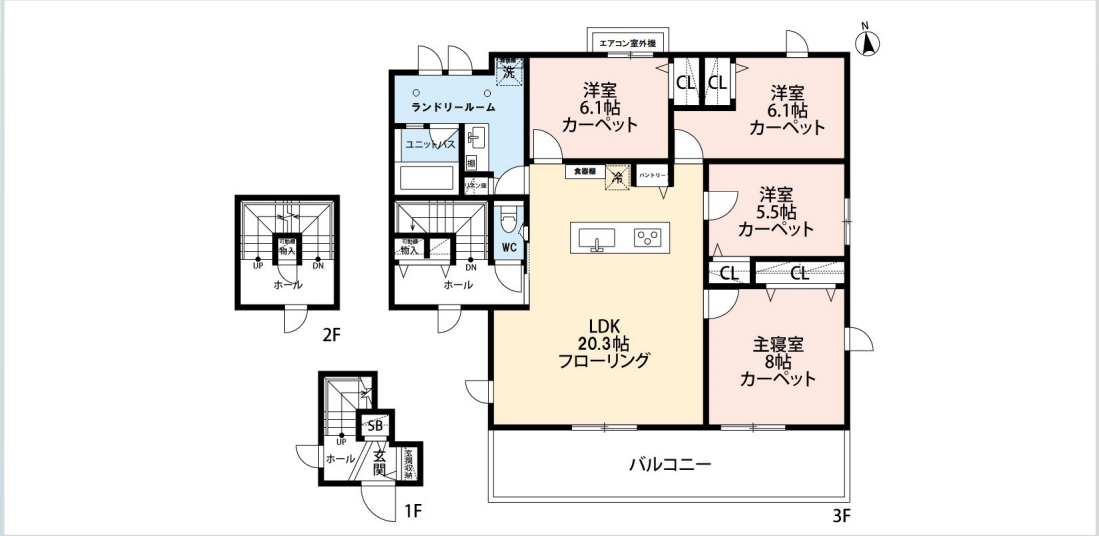
File number
E - 2024

CITY	Ebina-Shi
Unit Type	Apartment
Size (Square feet)	1243 Square feet
Year Built	2021

Rent Amount	284,000 yen	Appliance included
Appreciation fee	284,000 yen	
Commission	N/A	
Security Deposit	284,000 yen	
Total	852,000 yen	+ Renter's Insurance

Bedrooms	4 rooms
Bathroom	1 full bath + 1 toilet
Tatami Room	0
Parking Space	1 car park
Pet	No

Distance from Camp Zama (Drive)	25 minutes
Distance from closest station (walking)	Ebina (Odakyu-Odawara- line, Sotetsu-line) 10 minutes each



File number
E - 1017

CITY	Ebina-Shi
Unit Type	House
Size (Square feet)	1233 Square feet
Year Built	1996

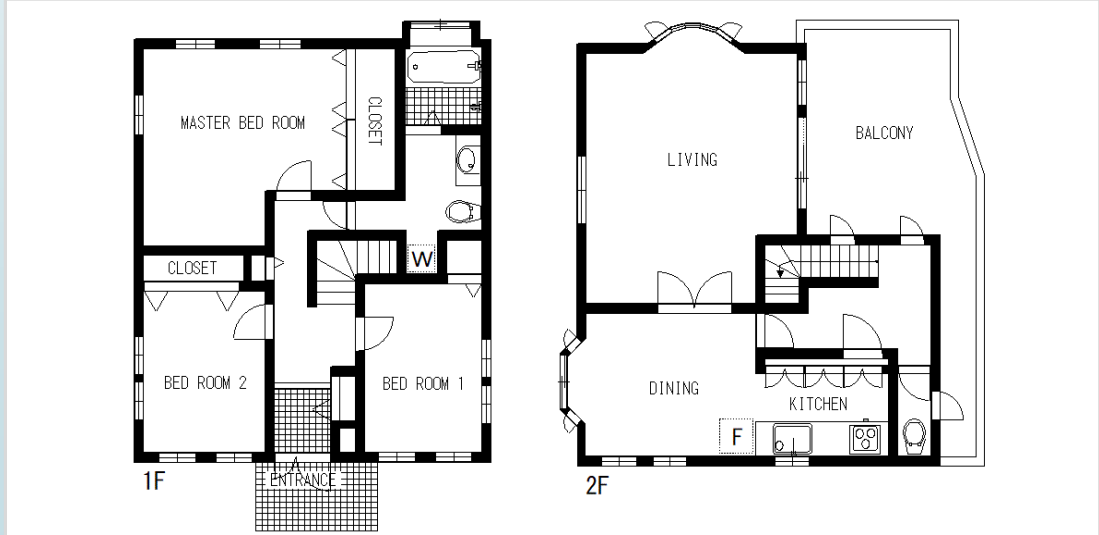
Rent Amount	230,000 yen
Appreciation fee	230,000 yen
Commission	253,000 yen
Security Deposit	230,000 yen
Total	943,000 yen + Renter's Insurance

Bedrooms	3 rooms
Bathroom	1 full bath + 2 toilet
Tatami Room	0 room
Parking Space	2 car park
Pet	No

Distance from Camp Zama (Drive)	10 minutes
Distance from closest station (walking)	Zama (Odakyu-Odawara-line) 15 minutes



1.2 x 1.8"



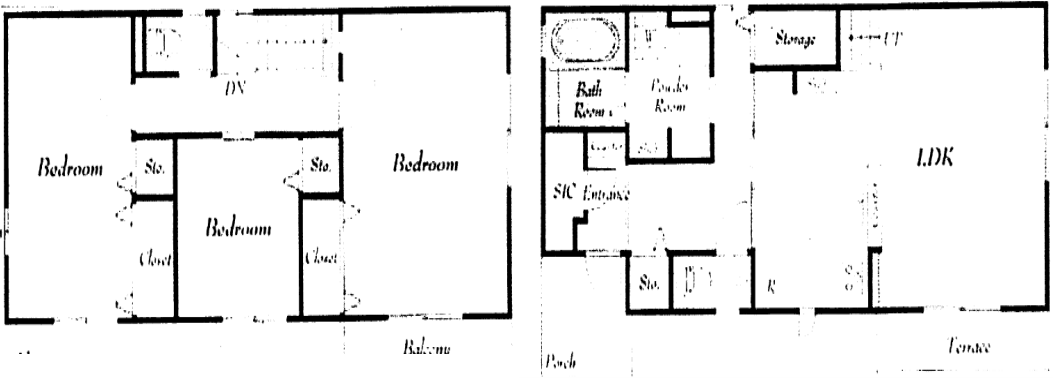
File number
Z - 2107

CITY	Zama-Shi
Unit Type	House
Size (Square feet)	1210 Square feet
Year Built	2011

Rent Amount	222,000 yen
Appreciation fee	222,000 yen
Commission	244,200 yen
Security Deposit	222,000 yen
Total	910,200 yen + Renter's Insurance

Bedrooms	3 rooms
Bathroom	1 full bath + 2 toilet
Tatami Room	1
Parking Space	2 car park
Pet	No

Distance from Camp Zama (Drive)	5 minutes
Distance from closest station (walking)	Soubudai Shita (Sagami-line) 4 minutes



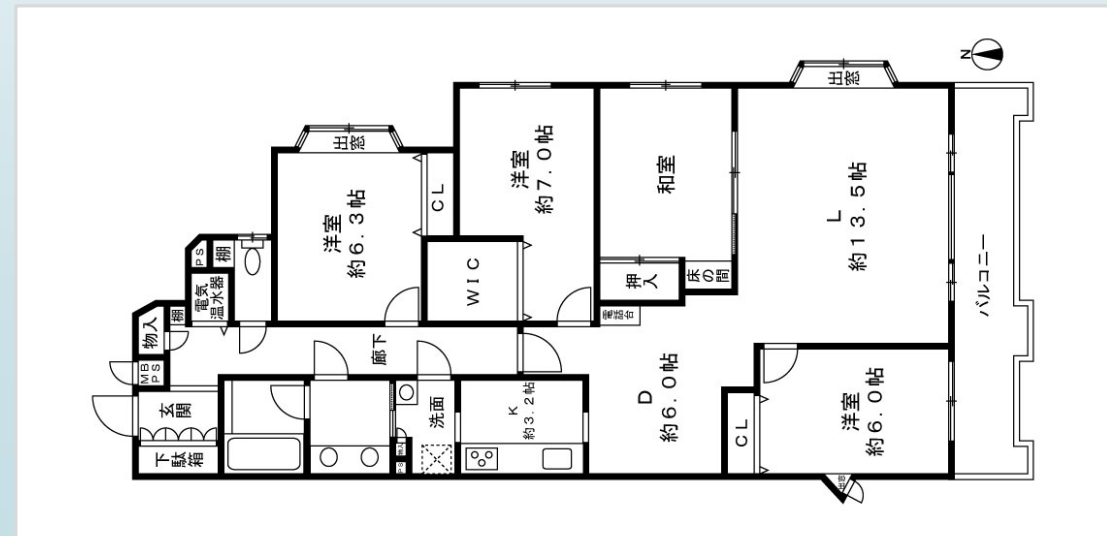
File number
SA - 2218

CITY	Atsugi-Shi
Unit Type	Apartment
Size (Square feet)	1154 Square feet
Year Built	1991

Rent Amount	199,000 yen
Appreciation fee	199,000 yen
Commission	218,900 yen
Security Deposit	199,000 yen
Total	815,900 yen + Renter's Insurance

Bedrooms	3 rooms
Bathroom	1 full bath + 1 toilet
Tatami Room	1 room
Parking Space	1 car park
Pet	No

Distance from Camp Zama (Drive)	20 minutes
Distance from closest station (walking)	Shimomizo (JR Sagami-line) 50 minutes



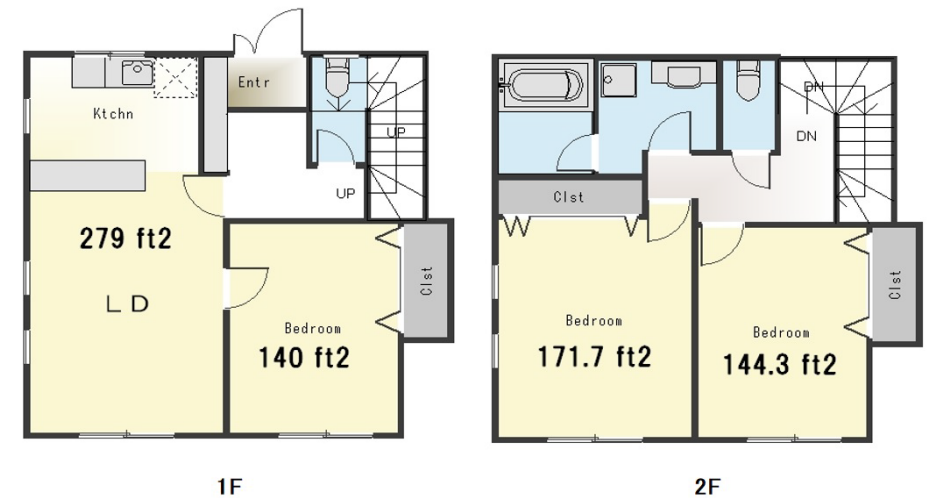
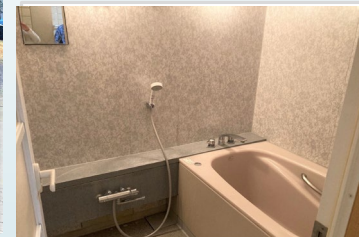
File number
Z - 0617

CITY	Zama-Shi
Unit Type	Town House
Size (Square feet)	1140 Square feet
Year Built	1999

Rent Amount	185,000 yen
Appreciation fee	185,000 yen
Commission	203,500 yen
Security Deposit	185,000 yen
Total	758,500 yen + Renter's Insurance

Bedrooms	3 rooms
Bathroom	1 full bath + 2 toilet
Tatami Room	0 room
Parking Space	1 car park
Pet	Yes

Distance from Camp Zama (Drive)	15 minutes
Distance from closest station (walking)	Zama(Odakyu-Odawara-line) 8 minutes



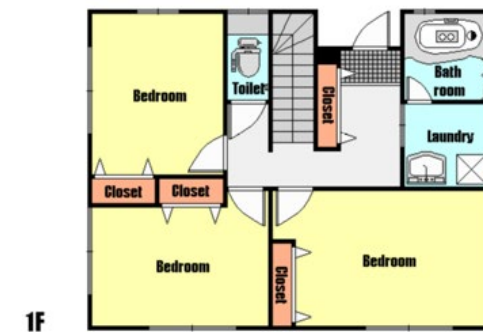
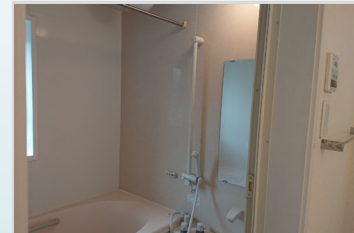
ZAMA RENTAL DESCRIPTION FOR OFF-POST HOUSING 2022

File number
G -2128

CITY	Sagamihara-Shi
Unit Type	House
Size (Square feet)	1101 Square feet
Year Built	2009

Rent Amount	197,000 yen
Appreciation fee	197,000 yen
Commission	216,700 yen
Security Deposit	197,000 yen
Total	807,700 yen + Renter's Insurance

Bedrooms	3 rooms	Distance from Camp Zama (Drive)	25 minutes
Bathroom	1 full bath + 2 toilet	Distance from closest station (walking)	Higashi Rinkan (Odakyu Enoshima-line)
Tatami Room	1		10 minutes
Parking Space	1 car park		
Pet	No		

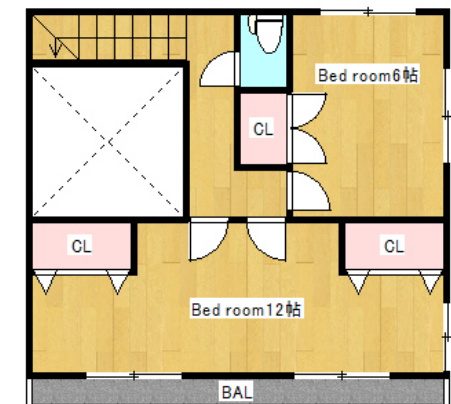


File number
E-1113

CITY	Ebina-Shi
Unit Type	House
Size (Square feet)	1078 Square feet
Year Built	1992

Rent Amount	184,000 yen
Appreciation fee	184,000 yen
Commission	202,400 yen
Security Deposit	184,000 yen
Total	754,400 yen + Renter's Insurance

Bedrooms	2 rooms	Distance from Camp Zama (Drive)	15 minutes
Bathroom	1 full bath + 2 toilet	Distance from closest station (walking)	Kashiwadai (Sotetsu line)
Tatami Room	1		15 minutes
Parking Space	1 car park		
Pet	Yes		



ZAMA RENTAL DESCRIPTION FOR OFF-POST HOUSING 2022

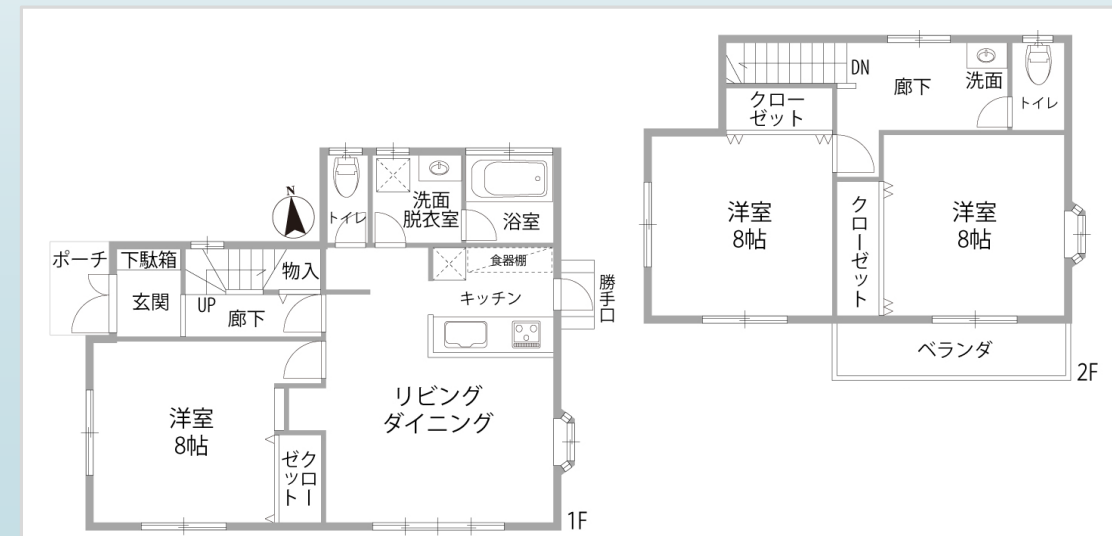
File number
Z-2187

CITY	Zama-Shi
Unit Type	House
Size (Square feet)	1069 Square feet
Year Built	2000

Rent Amount	214,000 yen Appliance included
Appreciation fee	214,000 yen
Commission	235,400 yen
Security Deposit	214,000 yen
Total	877,400 yen + Renter's Insurance

Bedrooms	3 rooms
Bathroom	1 full bath + 2 toilet
Tatami Room	0
Parking Space	1 car park
Pet	No

Distance from Camp Zama (Drive)	15 minutes
Distance from closest station (walking)	Zama (Odakyu-Odawara-line) 12 minutes



File number
SA -2217

CITY	Aikawa-machi
Unit Type	House
Size (Square feet)	1060 Square feet
Year Built	2010

Rent Amount	205,000 yen
Appreciation fee	205,000 yen
Commission	225,500 yen
Security Deposit	205,000 yen
Total	840,500 yen + Renter's Insurance

Bedrooms	3 rooms	Distance from Camp Zama (Drive)	25 minutes
Bathroom	1 full bath + 2 toilet	Distance from closest station (walking)	Harataima (Sagamihara-line) 75 minutes
Tatami Room	N/A		Nakatsu(Bus-stop) 2 minutes
Parking Space	2 car park		
Pet	No		



1.2 x 1.8"

ZAMA RENTAL DESCRIPTION FOR OFF-POST HOUSING 2022

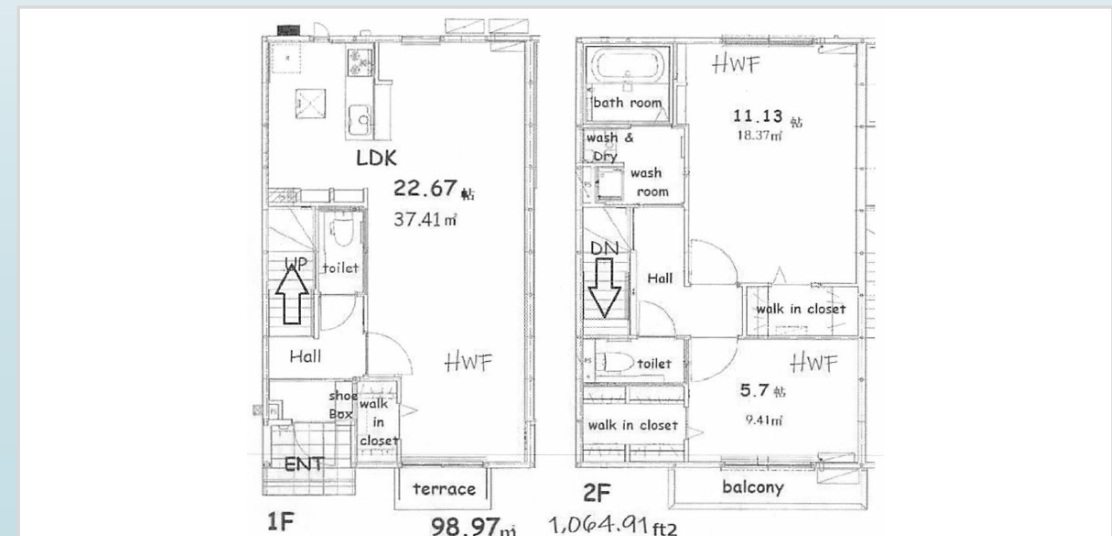
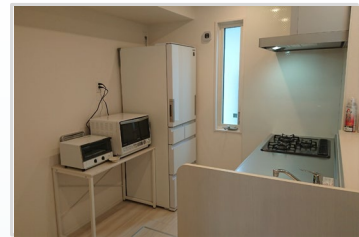
File number
R -1367

CITY	Yamato-shi
Unit Type	Town House
Size (Square feet)	1058 Square feet
Year Built	2021

Rent Amount	215,000 yen *Appliance included (A)
Appreciation fee	215,000 yen
Commission	236,500 yen
Security Deposit	215,000 yen
Total	881,500 yen + Renter's Insurance

Bedrooms	2 rooms
Bathroom	1 full bath + 2 toilet
Tatami Room	0
Parking Space	2 car park
Pet	No

Distance from Camp Zama (Drive)	20 minutes
Distance from closest station (walking)	Yamato Station (Odakyu Enoshima- line) 20 minutes



ZAMA RENTAL DESCRIPTION FOR OFF-POST HOUSING 2022

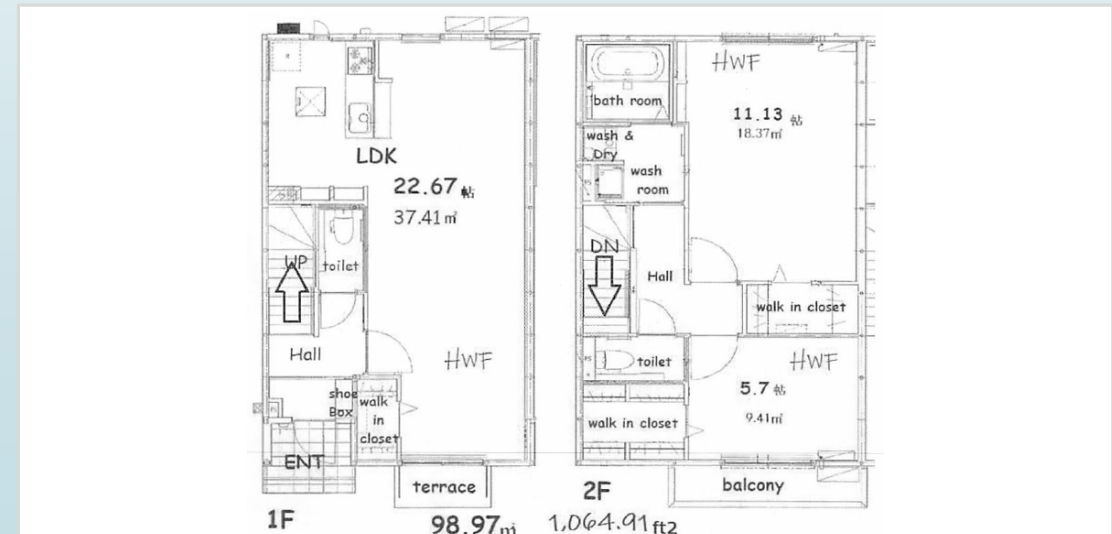
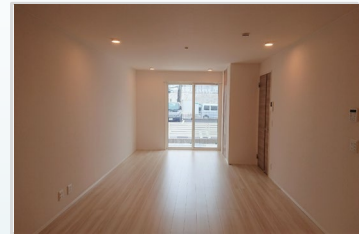
File number
R -1368

CITY	Yamato-shi
Unit Type	Town House
Size (Square feet)	1058 Square feet
Year Built	2021

Rent Amount	215,000 yen *Appliance included (A)
Appreciation fee	215,000 yen
Commission	236,500 yen
Security Deposit	215,000 yen
Total	881,500 yen + Renter's Insurance

Bedrooms	2 rooms
Bathroom	1 full bath + 2 toilet
Tatami Room	0
Parking Space	2 car park
Pet	No

Distance from Camp Zama (Drive)	20 minutes
Distance from closest station (walking)	Yamato Station (Odakyu Enoshima- line) 20 minutes



ZAMA RENTAL DESCRIPTION FOR OFF-POST HOUSING 2022

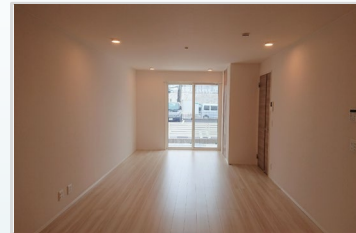
File number
R -1369

CITY	Yamato-shi
Unit Type	Town House
Size (Square feet)	1058 Square feet
Year Built	2021

Rent Amount	215,000 yen

Bedrooms	2 rooms
Bathroom	1 full bath + 2 toilet
Tatami Room	0
Parking Space	2 car park
Pet	No

Distance from Camp Zama (Drive)	20 minutes
Distance from closest station (walking)	Yamato Station (Odakyu Enoshima- line) 20 minutes



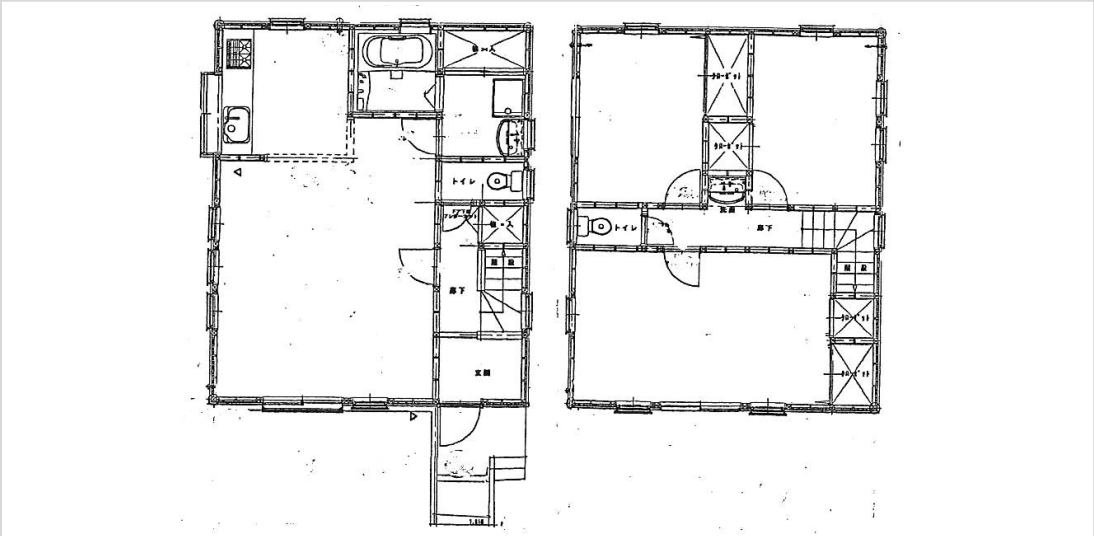
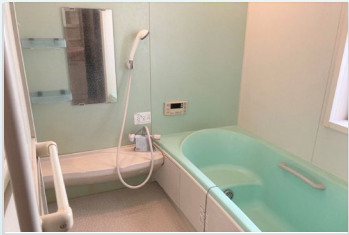
File number
Z - 1039

CITY	Zama-Shi
Unit Type	House
Size (Square feet)	1057 Square feet
Year Built	2006

Rent Amount	212,000 yen	Appliance included
Appreciation fee	212,000 yen	
Commission	233,200 yen	
Security Deposit	212,000 yen	
Total	869,200 yen	+ Renter's Insurance

Bedrooms	3 rooms
Bathroom	1 full bath + 2 toilet
Tatami Room	0 room
Parking Space	1 car park
Pet	No

Distance from Camp Zama (Drive)	10 minutes
Distance from closest station (walking)	Sobudai mae (Odakyu-Odawara- line) 15 minutes



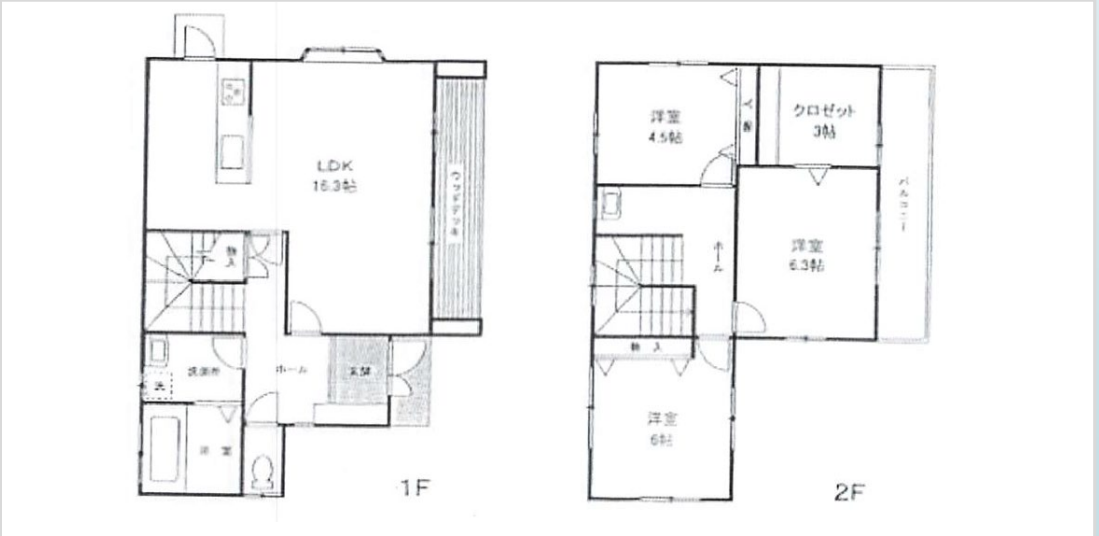
File number
SA - 2040

CITY	Atsugi-Shi
Unit Type	House
Size (Square feet)	979 Square feet
Year Built	2003

Rent Amount	200,000 yen
Appreciation fee	200,000 yen
Commission	220,000 yen
Security Deposit	200,000 yen
Total	820,000 yen + Renter's Insurance

Bedrooms	3 rooms
Bathroom	1 full bath + 1 toilet
Tatami Room	0 room
Parking Space	1 car park
Pet	No

Distance from Camp Zama (Drive)	20 minutes
Distance from closest station (walking)	Sobudai Shita Station (JR Sagami-line) 55 minutes



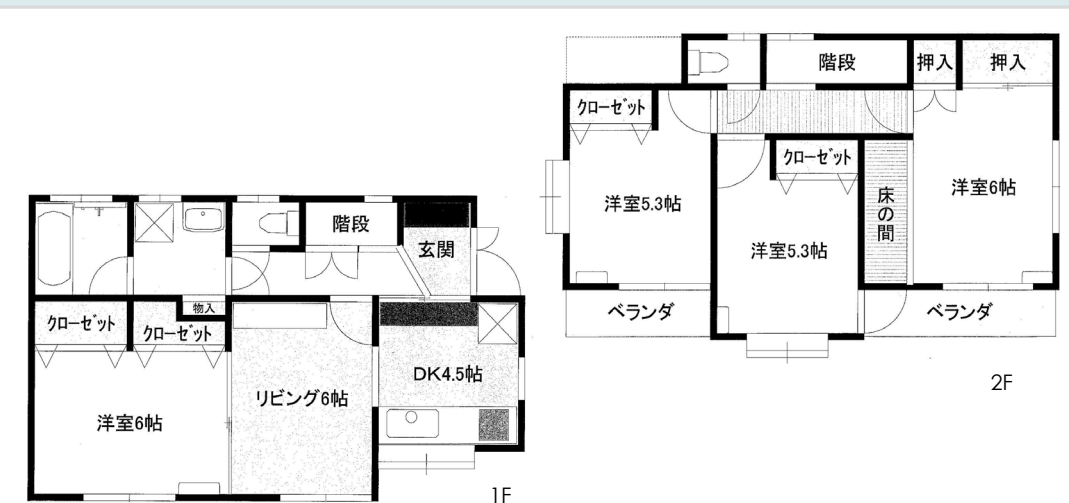
File number
G - 2115

CITY	Sagamihara-Shi
Unit Type	House
Size (Square feet)	923 Square feet
Year Built	2000

Rent Amount	175,000 yen
Appreciation fee	175,000 yen
Commission	192,500 yen
Security Deposit	175,000 yen
Total	717,500 yen + Renter's Insurance

Bedrooms	4 rooms
Bathroom	1 full bath + 2 toilet
Tatami Room	0 room
Parking Space	1 car park
Pet	No

Distance from Camp Zama (Drive)	20 minutes
Distance from closest station (walking)	Sagami Ono (Odakyu-Odawara-line) 22 minutes

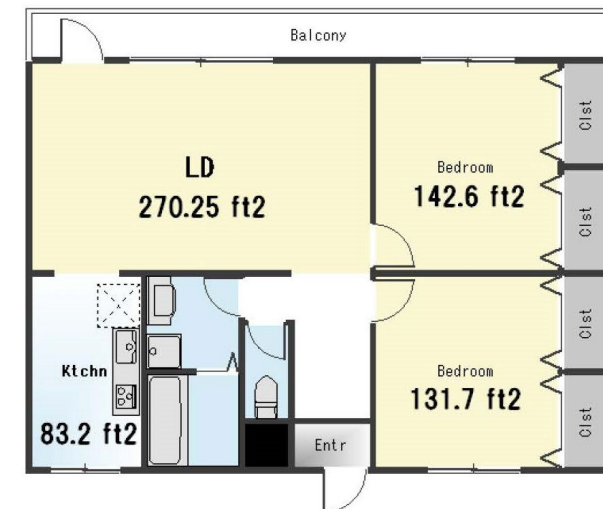


File number
Z-2162

CITY	Zama-Shi
Unit Type	Apartment
Size (Square feet)	871 Square feet
Year Built	1991

Rent Amount	150,000 yen
Appreciation fee	150,000 yen
Commission	165,000 yen
Security Deposit	150,000 yen
Total	615,000 yen + Renter's Insurance

Bedrooms	2 rooms	Distance from Camp Zama (Drive)	10 minutes
Bathroom	1 full bath + 1 toilet	Distance from closest station (walking)	Zama (Odakyu-Odawara-line)
Tatami Room	0 room		10 minutes
Parking Space	1 car park		
Pet	Negotiable		



File number
Z-1262

CITY	Zama-Shi
Unit Type	Apartment
Size (Square feet)	796 Square feet
Year Built	2011

Rent Amount	160,000 yen
Appreciation fee	160,000 yen
Commission	176,000 yen
Security Deposit	160,000 yen
Total	656,000 yen + Renter's Insurance

Bedrooms	2 rooms
Bathroom	1 full bath + 1 toilet
Tatami Room	0 room
Parking Space	1 car park
Pet	No

Distance from Camp Zama (Drive)	20 minutes
Distance from closest station (walking)	Sagamino (Sotetsu-line) 10 minutes



1.2 x 1.8"



File number
A -0414

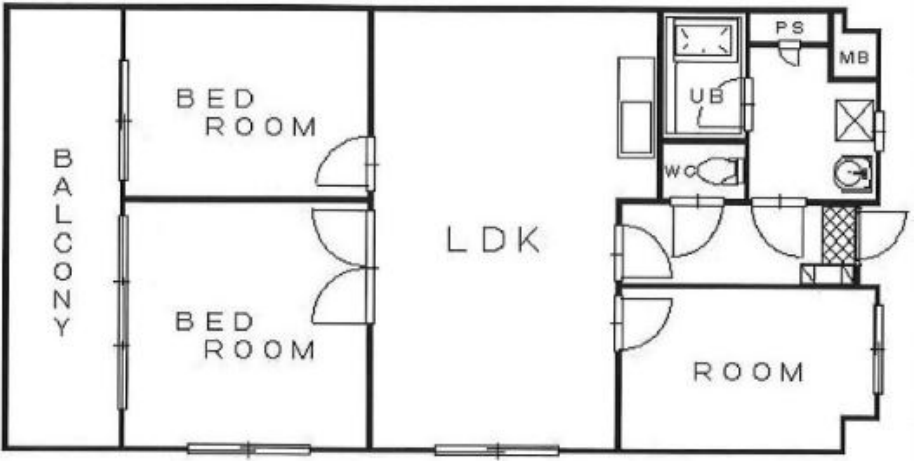
CITY	Ayase-Shi
Unit Type	Apartment
Size (Square feet)	767 Square feet
Year Built	1994


Rent Amount	146,000 yen
Appreciation fee	146,000 yen
Commission	160,600 yen
Security Deposit	146,000 yen
Total	598,500 yen + Renter's Insurance

Bedrooms	3 rooms	Distance from Camp Zama (Drive)	20 minutes
Bathroom	1 full bath + 1 toilet	Distance from closest station (walking)	Kashiwadai or Sagamino (Sotetsu-main-line)
Tatami Room	0 room		15 minutes
Parking Space	1 car park		
Pet	No		



1.2 x 1.8"





Should you have any question or need further information, please feel free to contact us.

Off-Post housing Counselor

- Nagaoka: kenichi.nagaoka.ln@army.mil
- Ito: natsuko.ito.ln@army.mil

Business Hours

Mon to Fri : 0800-1200, 1300-1600

Sat, Sun, and Holiday : Closed

***You are required to report to the Housing Services Office serving your existing and new duty stations before you make housing arrangements for renting, leasing, or purchasing any off-post housing.**

***This list is updated every 1st, 3rd Monday.**