

Welcome to Army Camp Zama

OFF-POST Housing

The Housing Service Office (HSO) is here to help you find a suitable house or apartment. The objective of the HSO is provide all US Forces personnel with a personalized service to assist them in locating suitable, non-discriminatory, community housing and that such housing is located reasonably near the applicant's duty station. We will provide all of the assistance we possibly can. Please feel free to contact us with any questions or problems about off-base housing.

Business Hours

Mon to Fri : 0800-1200, 1300-1600 / Thu : 1300-1600

Sat, Sun, and Holiday : Closed

***You are required to report to the Housing Services Office serving your existing and new duty stations before you make housing arrangements for renting, leasing, or purchasing any off-post housing.**

***This list is updated every 1st, 3rd Monday.**

File number
G - 1056

CITY	Sagamihara-Shi
Unit Type	House
Size (Square feet)	2028 Square feet
Year Built	1989

Rent Amount	301,000 yen
Appreciation fee	301,000 yen
Commission	331,100 yen
Security Deposit	301,000 yen
Total	1,234,100 yen + Renter's Insurance

Bedrooms	4 rooms	Distance from Camp Zama (Drive)	5 minutes
Bathroom	1 full + 2 toilet	Distance from closest station (walking)	Sobudai-Shita (JR Sagami Line) 3 minutes
Tatami Room	0 room		
Parking Space	2 car park		
Pet	No		



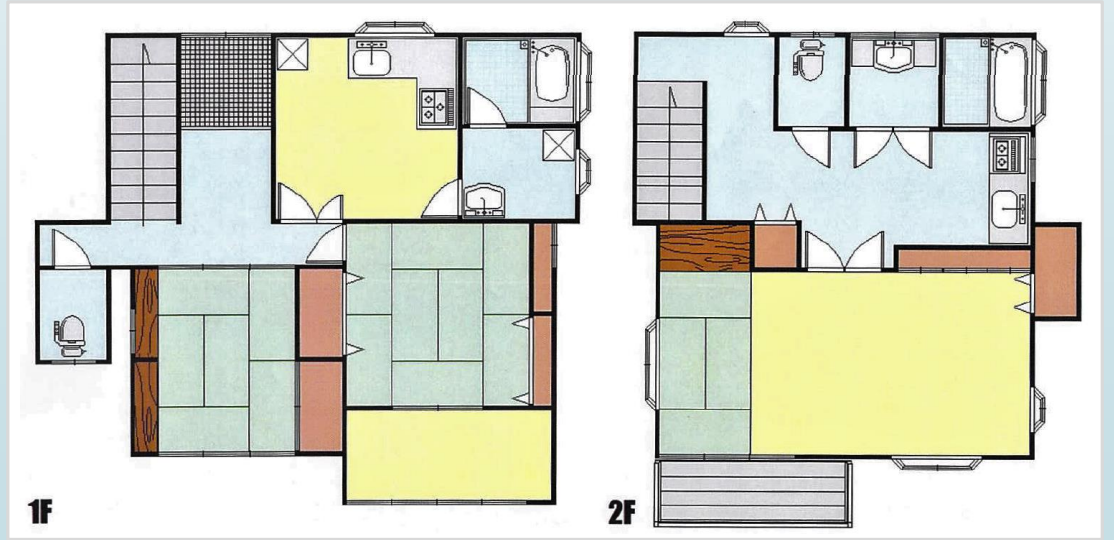
File number
SA - 2220

CITY	Atsugi-Shi
Unit Type	House
Size (Square feet)	1542 Square feet
Year Built	1975

Rent Amount	220,000 yen
Appreciation fee	220,000 yen
Commission	242,000 yen
Security Deposit	220,000 yen
Total	902,000 yen + Renter's Insurance

Bedrooms	2 rooms
Bathroom	1 full + 2 toilet
Tatami Room	1 room
Parking Space	2 car park
Pet	No

Distance from Camp Zama (Drive)	45 minutes
Distance from closest station (walking)	Hon-Atsugi Station (Odakyu-line) 15 minutes



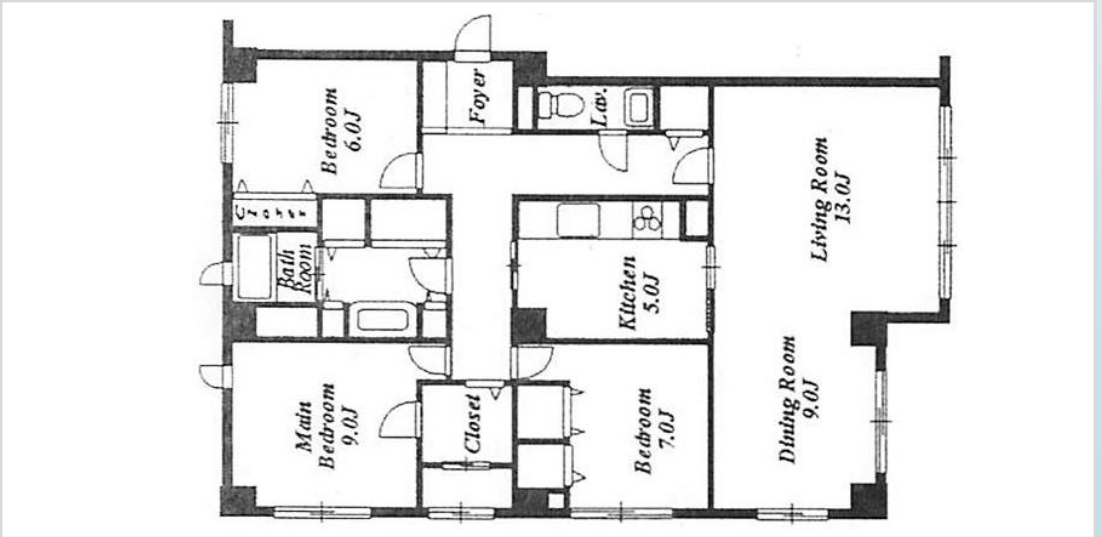
File number
R - 2030

CITY	Yamato-Shi
Unit Type	Apartment
Size (Square feet)	1343 Square feet
Year Built	1992

Rent Amount	223,000 yen
Appreciation fee	223,000 yen
Commission	245,300 yen
Security Deposit	223,000 yen
Total	914,300 yen + Renter's Insurance

Bedrooms	3 rooms
Bathroom	1 full bath + 1 toilet
Tatami Room	N/A
Parking Space	1 car park
Pet	No

Distance from Camp Zama (Drive)	15 minutes
Distance from closest station (walking)	Minami-Rinkan (Odakyu Enoshima- line) 5 minutes



File number
R – 2054

CITY	Yamato-Shi
Unit Type	House
Size (Square feet)	1260 Square feet
Year Built	1992

Rent Amount	225,000 yen
Appreciation fee	225,000 yen
Commission	247,500 yen
Security Deposit	225,000 yen
Total	922,500 yen + Renter's Insurance

Bedrooms	4 rooms
Bathroom	1 full + 2 toilet
Tatami Room	0 room
Parking Space	2 car park
Pet	Negotiable

Distance from Camp Zama (Drive)	40 minutes
Distance from closest station (walking)	Koza Shibuya (Odakyu Enoshima-line) 13 minutes



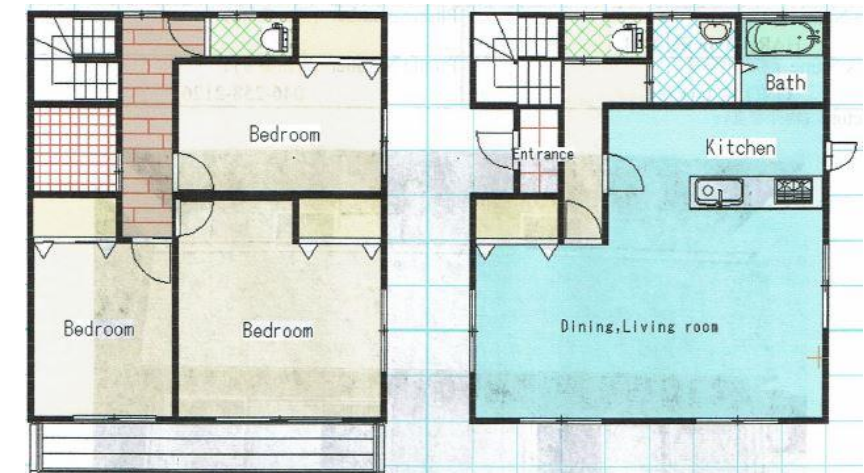
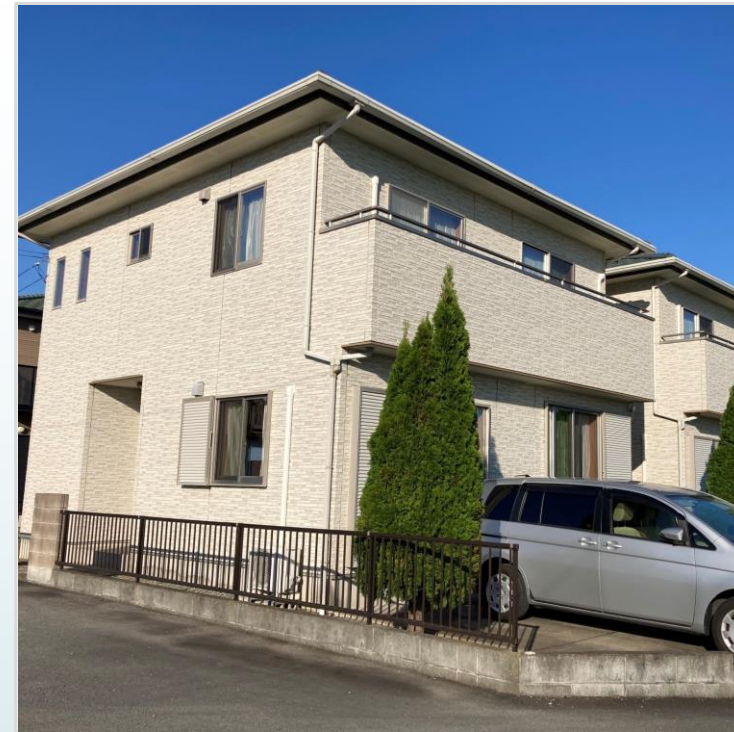
File number
Z - 2083

CITY	Zama-Shi
Unit Type	House
Size (Square feet)	1218 Square feet
Year Built	2010

Rent Amount	223,000 yen
Appreciation fee	223,000 yen
Commission	245,300 yen
Security Deposit	223,000 yen
Total	914,300 yen + Renter's Insurance

Bedrooms	3 rooms
Bathroom	1 full bath + 2 toilet
Tatami Room	0
Parking Space	2 car park
Pet	No

Distance from Camp Zama (Drive)	9 minutes
Distance from closest station (walking)	Iriya (Sagami line) 8 minutes



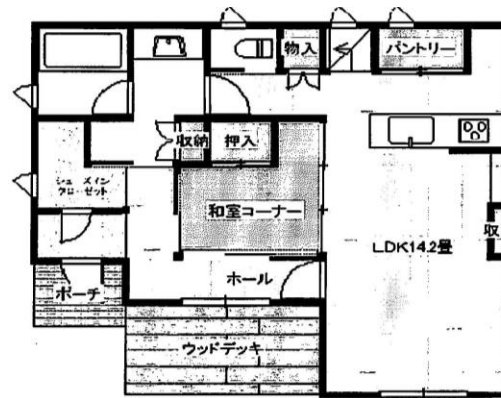
File number
SA - 2216

CITY	Machida-Shi
Unit Type	House
Size (Square feet)	1167 Square feet
Year Built	2016

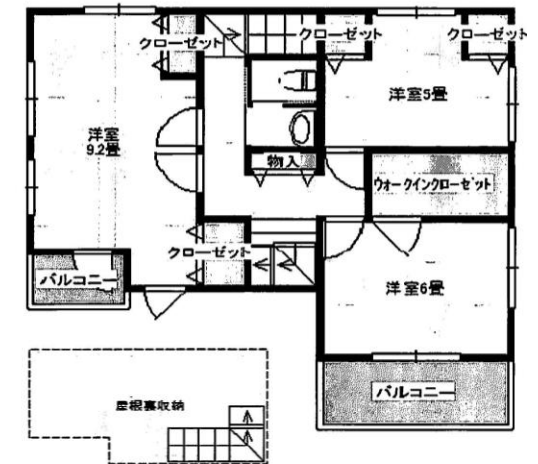
Rent Amount	213,000 yen
Appreciation fee	213,000 yen
Commission	234,300 yen
Security Deposit	213,000 yen
Total	873,300 yen + Renter's Insurance

Bedrooms	3 rooms
Bathroom	1 full bath + 2 toilet
Tatami Room	1
Parking Space	2 car park
Pet	No

Distance from Camp Zama (Drive)	40 minutes
Distance from closest station (walking)	Fuchinobe (Yokohama-line) 50 minutes



1階平面図



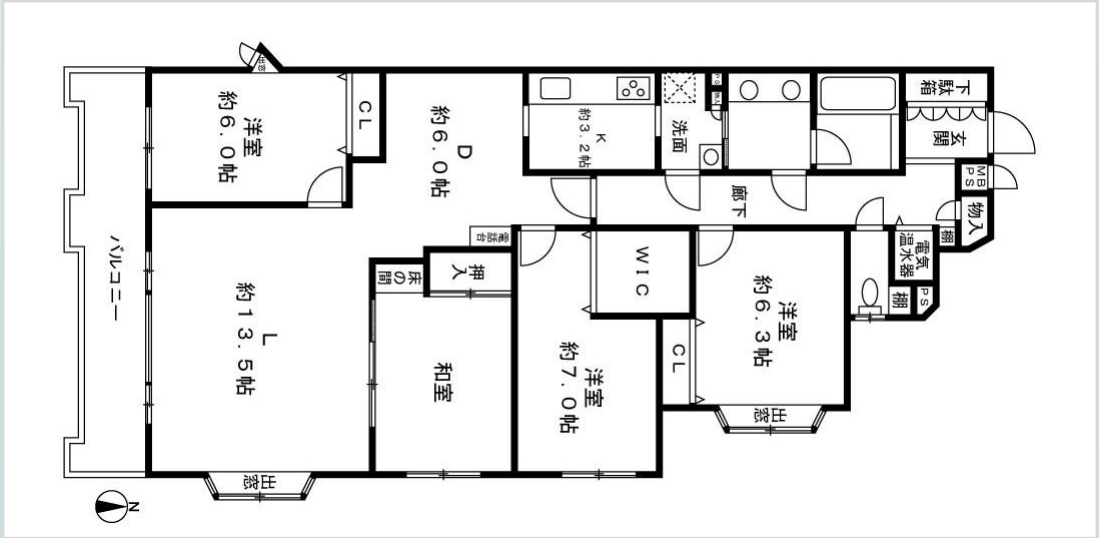
File number
SA – 2218

CITY	Atsugi-Shi
Unit Type	Apartment
Size (Square feet)	1154 Square feet
Year Built	1991

Rent Amount	199,000 yen
Appreciation fee	199,000 yen
Commission	218,900 yen
Security Deposit	199,000 yen
Total	815,900 yen + Renter's Insurance

Bedrooms	3 rooms
Bathroom	1 full bath + 1 toilet
Tatami Room	1
Parking Space	1 car park
Pet	No

Distance from Camp Zama (Drive)	20 minutes
Distance from closest station (walking)	Shimomizo (JR Sagami-line) 50 minutes



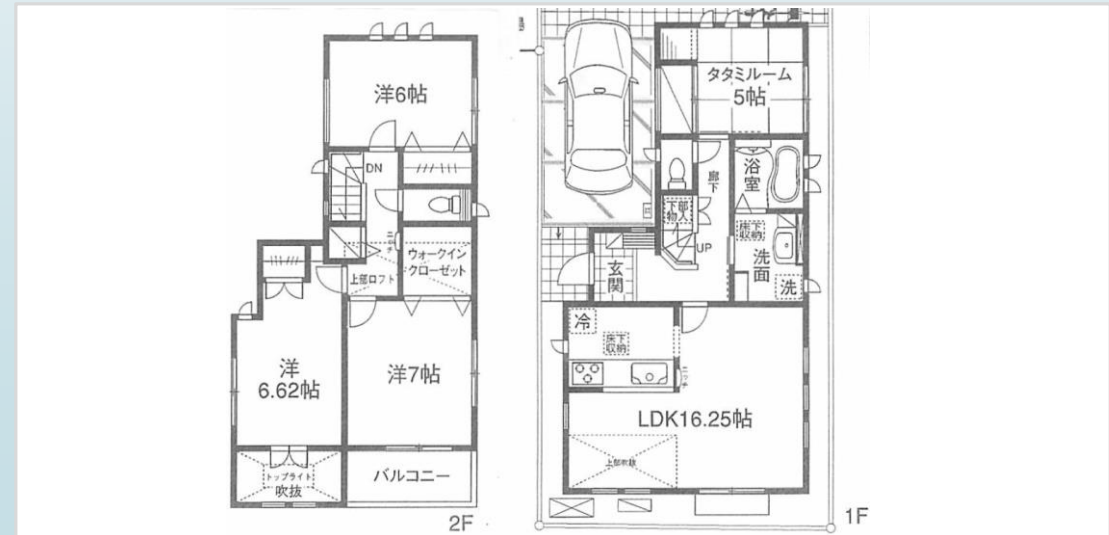
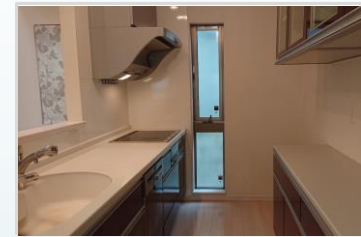
File number
G-2139

CITY	Sagamihara-Shi
Unit Type	House
Size (Square feet)	1093 Square feet
Year Built	2008

Rent Amount	205,000 yen
Appreciation fee	205,000 yen
Commission	225,500 yen
Security Deposit	205,000 yen
Total	840,500 yen + Renter's Insurance

Bedrooms	3 rooms
Bathroom	1 full bath + 2 toilet
Tatami Room	1 room
Parking Space	1 car park
Pet	No

Distance from Camp Zama (Drive)	20 minutes
Distance from closest station (walking)	Sagami Ono (Odakyu-line) 18 minutes



File number
Z - 2204

CITY	Zama-Shi
Unit Type	House
Size (Square feet)	1069 Square feet
Year Built	2022

Rent Amount	200,000 yen
Appreciation fee	200,000 yen
Commission	220,000 yen
Security Deposit	200,000 yen
Total	820,000 yen + Renter's Insurance

Bedrooms	3 rooms
Bathroom	1 full + 2 toilet
Tatami Room	0 room
Parking Space	1 car park
Pet	No

Distance from Camp Zama (Drive)	12 minutes
Distance from closest station (walking)	Sagamino (Sotetsu-line) 12 minutes



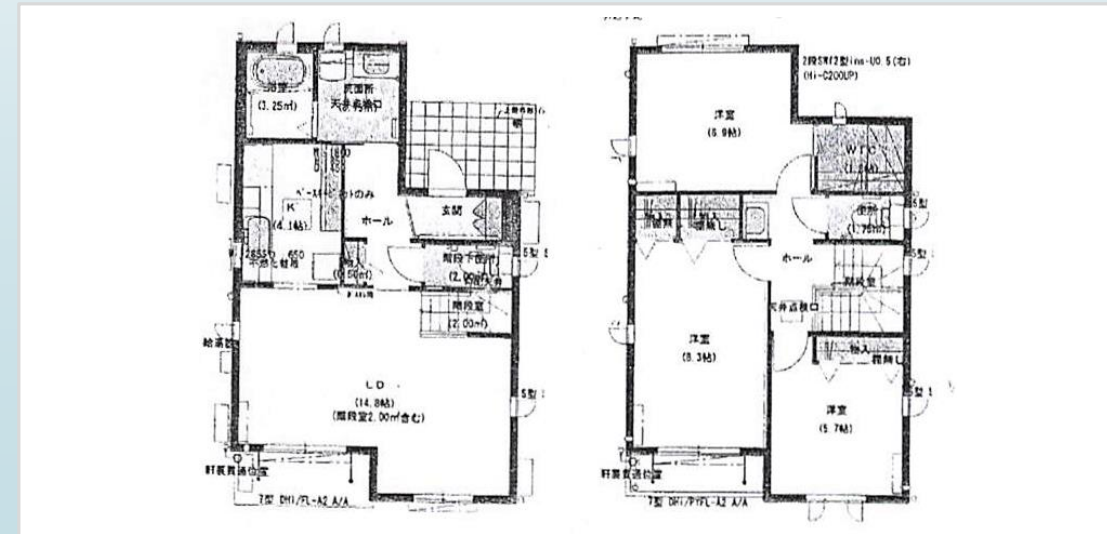
File number
Z-1188

CITY	Zama-Shi
Unit Type	House
Size (Square feet)	1061 Square feet
Year Built	2013

Rent Amount	198,000 yen
Appreciation fee	198,000 yen
Commission	217,800 yen
Security Deposit	198,000 yen
Total	811,800 yen + Renter's Insurance

Bedrooms	3 rooms
Bathroom	1 full bath + 2 toilet
Tatami Room	N/A
Parking Space	1 car park
Pet	No

Distance from Camp Zama (Drive)	8 minutes
Distance from closest station (walking)	Zama (Odakyu-Odawara-line) 20 minutes



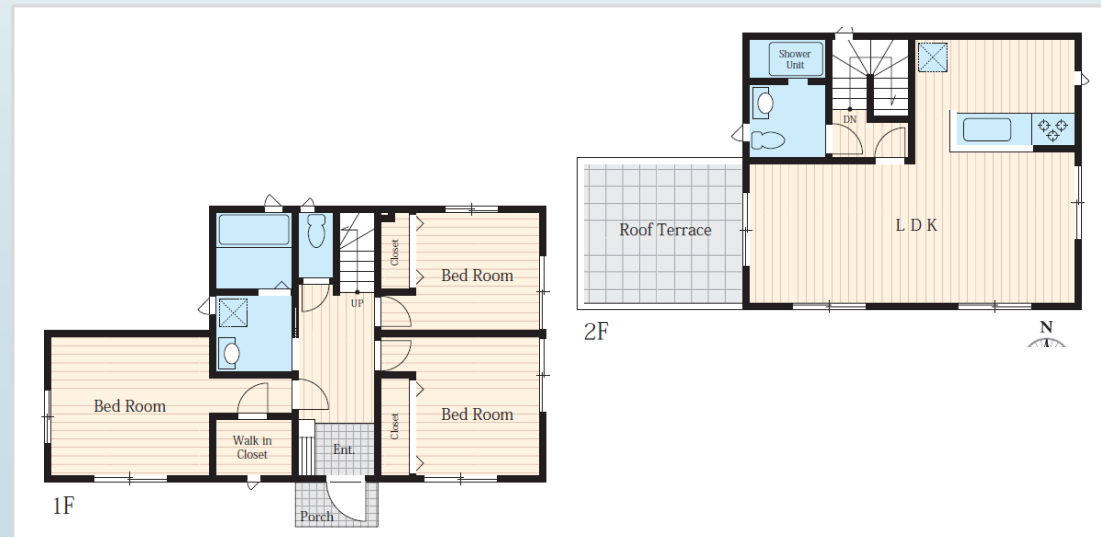
File number
Z-2139

CITY	Zama-Shi
Unit Type	House
Size (Square feet)	1051 Square feet
Year Built	2016

Rent Amount	197,000 yen
Appreciation fee	197,000 yen
Commission	216,700 yen
Security Deposit	197,000 yen
Total	807,700 yen + Renter's Insurance

Bedrooms	3 rooms
Bathroom	1 full bath + 2 toilet
Tatami Room	0
Parking Space	1 car park
Pet	No

Distance from Camp Zama (Drive)	10 minutes
Distance from closest station (walking)	Zama (Odakyu-Odawara-line) 15 minutes



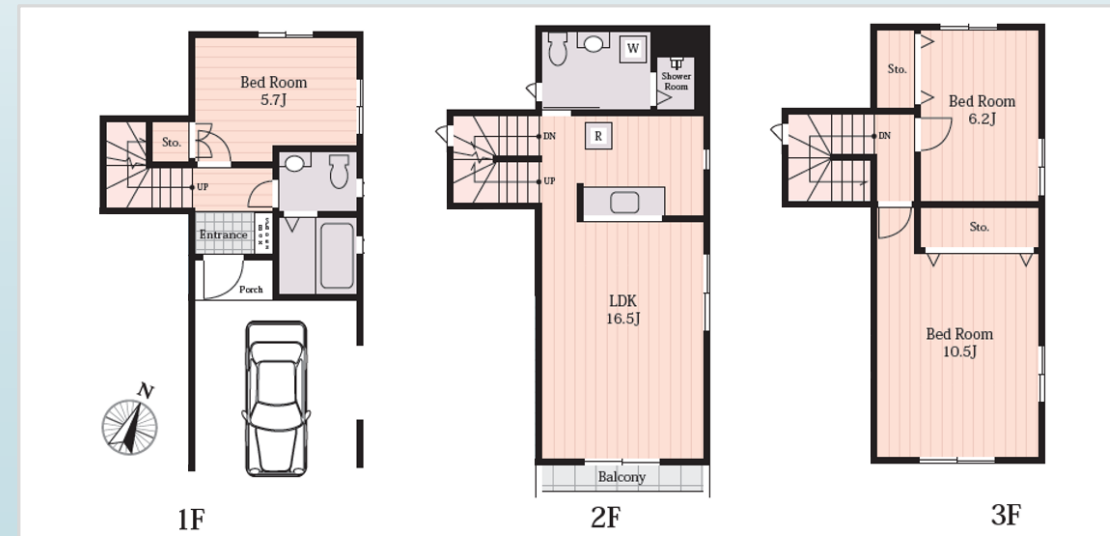
File number
Z-2176

CITY	Zama-Shi
Unit Type	Duplex
Size (Square feet)	1022 Square feet
Year Built	2020

Rent Amount	195,000 yen
Appreciation fee	195,000 yen
Commission	214,500 yen
Security Deposit	195,000 yen
Total	799,500 yen + Renter's Insurance

Bedrooms	3 rooms
Bathroom	1 full bath + 2 toilet
Tatami Room	0
Parking Space	1 car park
Pet	No

Distance from Camp Zama (Drive)	5 minutes
Distance from closest station (walking)	Zama (Odakyu-Odawara-line) 17 minutes



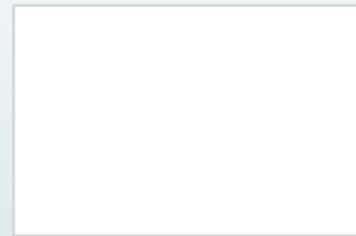
File number
G - 2263

CITY	Sagamihara-Shi
Unit Type	House
Size (Square feet)	993 Square feet
Year Built	2013

Rent Amount	186,000 yen
Appreciation fee	186,000 yen
Commission	204,600 yen
Security Deposit	186,000 yen
Total	762,600 yen + Renter's Insurance

Bedrooms	1 rooms
Bathroom	1 full bath + 2 toilet
Tatami Room	0 room
Parking Space	1 car park
Pet	No

Distance from Camp Zama (Drive)	40 minutes (From Sagami Depot 3 minutes)
Distance from closest station (walking)	Sagamihara and Yabe (Yokohama-line) 25 minutes



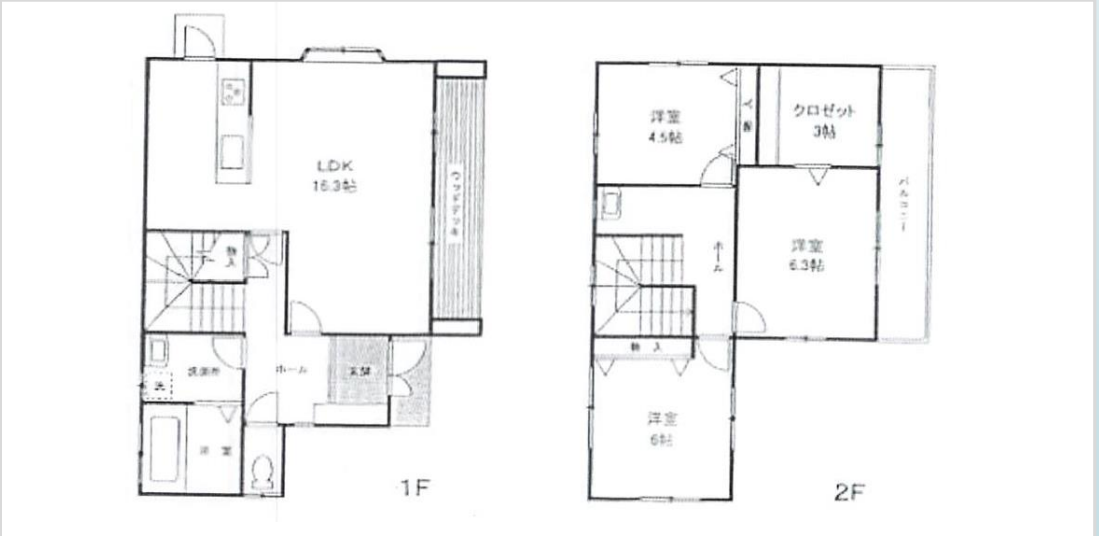
File number
SA - 2040

CITY	Atsugi-Shi
Unit Type	House
Size (Square feet)	979 Square feet
Year Built	2003

Rent Amount	200,000 yen
Appreciation fee	200,000 yen
Commission	220,000 yen
Security Deposit	200,000 yen
Total	820,000 yen + Renter's Insurance

Bedrooms	3 rooms
Bathroom	1 full bath + 1 toilet
Tatami Room	0 room
Parking Space	1 car park
Pet	No

Distance from Camp Zama (Drive)	20 minutes
Distance from closest station (walking)	Sobudai Shita Station (JR Sagami-line) 55 minutes

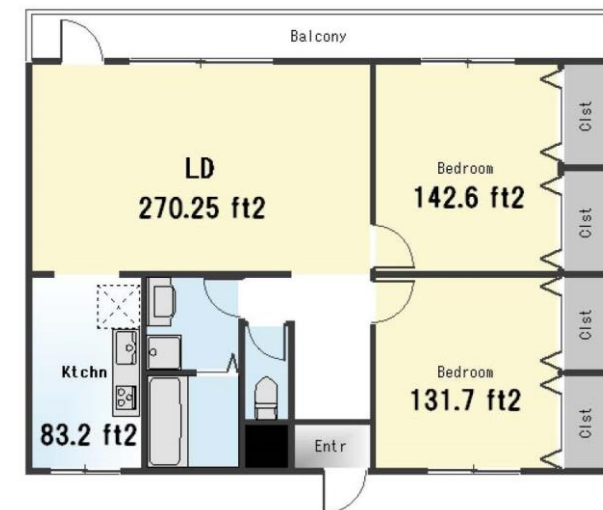
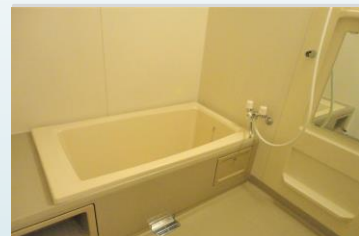


File number
Z-2162

CITY	Zama-Shi
Unit Type	Apartment
Size (Square feet)	871 Square feet
Year Built	1991

Rent Amount	150,000 yen
Appreciation fee	150,000 yen
Commission	165,000 yen
Security Deposit	150,000 yen
Total	615,000 yen + Renter's Insurance

Bedrooms	2 rooms	Distance from Camp Zama (Drive)	10 minutes
Bathroom	1 full bath + 1 toilet	Distance from closest station (walking)	Zama (Odakyu-Odawara-line)
Tatami Room	0 room		10 minutes
Parking Space	1 car park		
Pet	Negotiable		



File number
A -0414

CITY	Ayase-Shi
Unit Type	Apartment
Size (Square feet)	767 Square feet
Year Built	1994

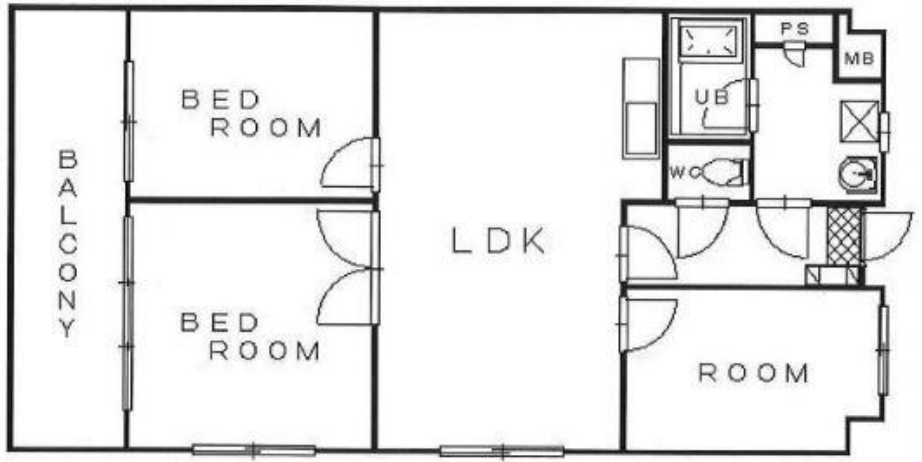
Rent Amount	146,000 yen
Appreciation fee	146,000 yen
Commission	160,600 yen
Security Deposit	146,000 yen
Total	598,500 yen + Renter's Insurance

Bedrooms	3 rooms
Bathroom	1 full bath + 1 toilet
Tatami Room	0 room
Parking Space	1 car park
Pet	No

Distance from Camp Zama (Drive)	20 minutes
Distance from closest station (walking)	Kashiwadai or Sagamino (Sotetsu-main-line) 15 minutes



1.2 x 1.8"




File number
G-2264

CITY	Sagamihara-Shi
Unit Type	House
Size (Square feet)	757 Square feet
Year Built	1999

Rent Amount	155,000 yen
Appreciation fee	155,000 yen
Commission	170,500 yen
Security Deposit	155,000 yen
Total	635,500 yen + Renter's Insurance

Bedrooms	2 rooms	Distance from Camp Zama (Drive)	10 minutes
Bathroom	1 full + 1 toilet	Distance from closest station (walking)	Shimomizo (JR Sagami-line) 15 minutes
Tatami Room	1 room		
Parking Space	2 car park		
Pet	Negotiable		





Should you have any question or need further information, please feel free to contact us.

Off-Post housing Counselor

- Nagaoka: kenichi.nagaoka.ln@army.mil
- Ito: natsuko.ito.ln@army.mil

Business Hours

Mon to Fri : 0800-1200, 1300-1600

Sat, Sun, and Holiday : Closed

***You are required to report to the Housing Services Office serving your existing and new duty stations before you make housing arrangements for renting, leasing, or purchasing any off-post housing.**

***This list is updated every 1st, 3rd Monday.**