

Welcome to Army Camp Zama

OFF-POST Housing

The Housing Service Office (HSO) is here to help you find a suitable house or apartment. The objective of the HSO is provide all US Forces personnel with a personalized service to assist them in locating suitable, non-discriminatory, community housing and that such housing is located reasonably near the applicant's duty station. We will provide all of the assistance we possibly can. Please feel free to contact us with any questions or problems about off-base housing.

Business Hours

Mon to Fri : 0800-1200, 1300-1600

Sat, Sun, and Holiday : Closed

***You are required to report to the Housing Services Office serving your existing and new duty stations before you make housing arrangements for renting, leasing, or purchasing any off-post housing.**

***This list is updated every 1st, 3rd Monday.**

***Listing in Housing Office is updated every Monday.**

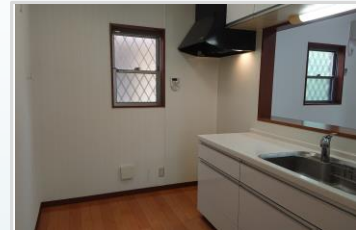
ZAMA RENTAL DESCRIPTION FOR OFF-POST HOUSING

File number
G - 2126

CITY	Sagamihara-Shi
Unit Type	House
Size (Square feet)	1406 Square feet
Year Built	2010

Rent Amount	220,000 yen
Appreciation fee	220,000 yen
Commission	242,000 yen
Security Deposit	220,000 yen
Total	902,000 yen + Renter's Insurance

Bedrooms	3 rooms	Distance from Camp Zama (Drive)	15 minutes
Bathroom	1 full bath + 2 toilet	Distance from closest station (walking)	Harataima (JR Sagami-line)
Tatami Room	0		18 minutes
Parking Space	2 car park		
Pet	No		



ZAMA RENTAL DESCRIPTION FOR OFF-POST HOUSING

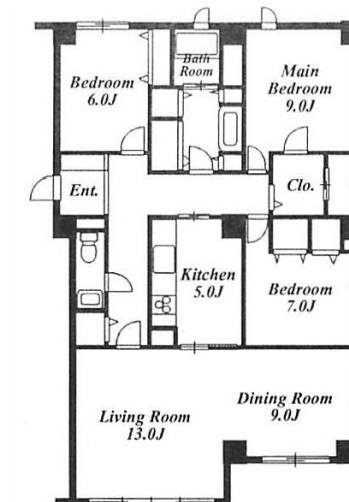
File number
R- 1039

CITY	Yamato-Shi
Unit Type	Apartment
Size (Square feet)	1343 Square feet
Year Built	1992

Rent Amount	225,000 yen
Appreciation fee	225,000 yen
Commission	247,500 yen
Security Deposit	225,000 yen
Total	922,500 yen + Renter's Insurance

2edrooms	3 rooms
Bathroom	1 full bath + 1 toilet
Tatami Room	N/A
Parking Space	1 car park
Pet	No

Distance from Camp Zama (Drive)	15 minutes
Distance from closest station (walking)	Minami-Rinkan (Odakyu Enoshima-line) 5 minutes



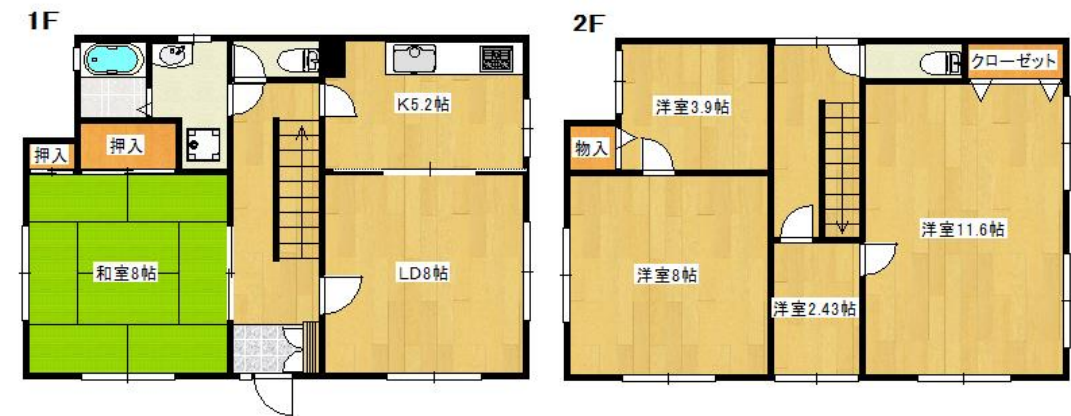
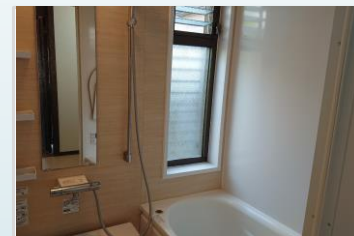
ZAMA RENTAL DESCRIPTION FOR OFF-POST HOUSING

File number
G - 2218

CITY	Sagamihara-Shi
Unit Type	House
Size (Square feet)	1257 Square feet
Year Built	1988

Rent Amount	197,000 yen
Appreciation fee	197,000 yen
Commission	216,700 yen
Security Deposit	197,000 yen
Total	807,700 yen + Renter's Insurance

Bedrooms	3 rooms	Distance from Camp Zama (Drive)	25 minutes
Bathroom	1 full bath + 2 toilet	Distance from closest station (walking)	Sagami-Ono Station (Odakyu-line)
Tatami Room	1		12 minutes
Parking Space	1 car park		
Pet	No		



ZAMA RENTAL DESCRIPTION FOR OFF-POST HOUSING

File number
R - 0703

CITY	Yamato-Shi
Unit Type	House
Size (Square feet)	1223 Square feet
Year Built	1988

Rent Amount	191,000 yen
Appreciation fee	191,000 yen
Commission	210,100 yen
Security Deposit	191,000 yen
Total	783,100 yen + Renter's Insurance

Bedrooms	3 rooms
Bathroom	1 full bath + 2 toilet
Tatami Room	0
Parking Space	1 car park
Pet	No

Distance from Camp Zama (Drive)	25 minutes
Distance from closest station (walking)	Tsukimino Station (Odakyu Enoshima-line) 7 minutes



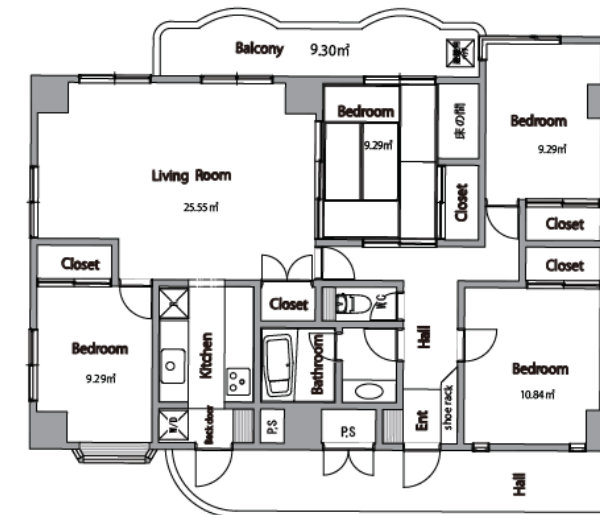
ZAMA RENTAL DESCRIPTION FOR OFF-POST HOUSING

File number
G -2110

CITY	Sagamihara-Shi
Unit Type	Apartment
Size (Square feet)	1124 Square feet
Year Built	1990

Rent Amount	220,000 yen
Appreciation fee	220,000 yen
Commission	242,000 yen
Security Deposit	220,000 yen
Total	902,000 yen + Renter's Insurance

Bedrooms	3 rooms	Distance from Camp Zama (Drive)	40 minutes
Bathroom	1 full bath + 1 toilet	Distance from closest station (walking)	JR Sagamihara (JR Yokohama-line) 30 minutes
Tatami Room	1 room		
Parking Space	1 car park		
Pet	Negotiable		



ZAMA RENTAL DESCRIPTION FOR OFF-POST HOUSING

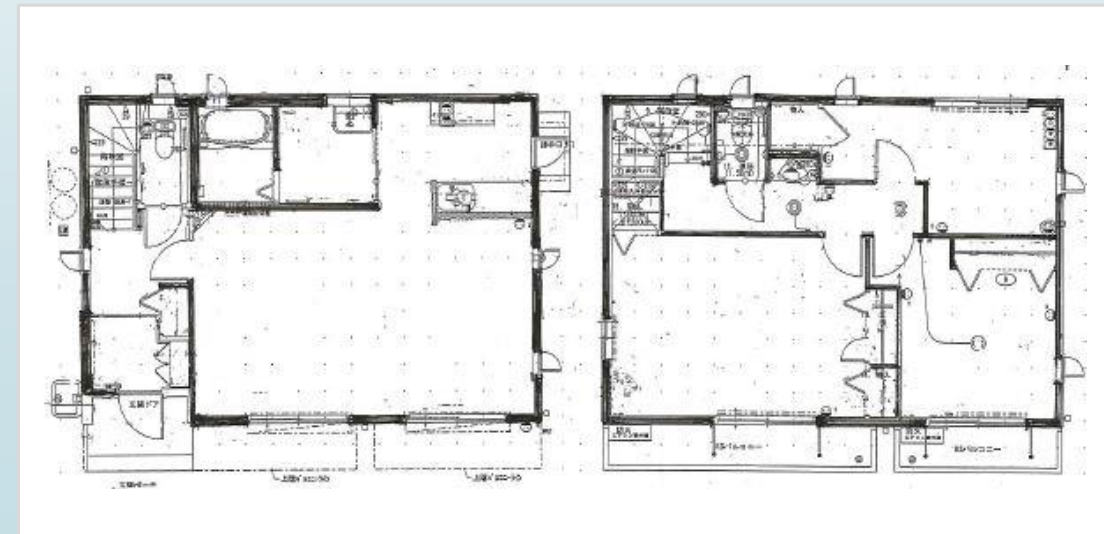
File number
Z-2066

CITY	Zama-Shi
Unit Type	House
Size (Square feet)	1105 Square feet
Year Built	2009

Rent Amount	190,000 yen
Appreciation fee	190,000 yen
Commission	209,000 yen
Security Deposit	190,000 yen
Total	779,000 yen + Renter's Insurance

Bedrooms	3 rooms
Bathroom	1 full bath + 2 toilet
Tatami Room	N/A
Parking Space	3 car park
Pet	No

Distance from Camp Zama (Drive)	5 minutes
Distance from closest station (walking)	IRIYA (JR Sagami-line) 15 minutes



ZAMA RENTAL DESCRIPTION FOR OFF-POST HOUSING

File number
R -2050

CITY	Yamato-Shi
Unit Type	Duplex
Size (Square feet)	1080 Square feet
Year Built	1997

Rent Amount	197,000 yen
Appreciation fee	197,000 yen
Commission	216,700 yen
Security Deposit	197,000 yen
Total	807,700 yen + Renter's Insurance

Bedrooms	3 rooms
Bathroom	1 full bath + 1 toilet
Tatami Room	N/A
Parking Space	1 car park
Pet	No

Distance from Camp Zama (Drive)	16 minutes
Distance from closest station (walking)	Sagamiono (Odakyu Odawara-line) 5 minutes



File number
SA -2217

CITY	Aikawa-machi
Unit Type	House
Size (Square feet)	1060 Square feet
Year Built	2010

Rent Amount	200,000 yen
Appreciation fee	200,000 yen
Commission	220,000 yen
Security Deposit	200,000 yen
Total	820,000 yen + Renter's Insurance

Bedrooms	3 rooms	Distance from Camp Zama (Drive)	25 minutes
Bathroom	1 full bath + 2 toilet	Distance from closest station (walking)	Harataima (Sagamihara-line) 75 minutes
Tatami Room	N/A		Nakatsu(Bus-stop) 2 minutes
Parking Space	2 car park		
Pet	No		



1.2 x 1.8"

ZAMA RENTAL DESCRIPTION FOR OFF-POST HOUSING

File number
G - 2234

CITY	Sagamihara-Shi
Unit Type	House
Size (Square feet)	1044 Square feet
Year Built	2008

Rent Amount	185,000 yen
Appreciation fee	185,000 yen
Commission	203,500 yen
Security Deposit	185,000 yen
Total	758,500 yen + Renter's Insurance

Bedrooms	3 rooms	Distance from Camp Zama (Drive)	35 minutes
Bathroom	1 full bath + 2 toilet	Distance from closest station (walking)	Machida Station (Odakyu-line/JR Yokohama)
Tatami Room	N/A		15 minutes
Parking Space	0 car park		
Pet	Negotiable		



1.2 x 1.8"



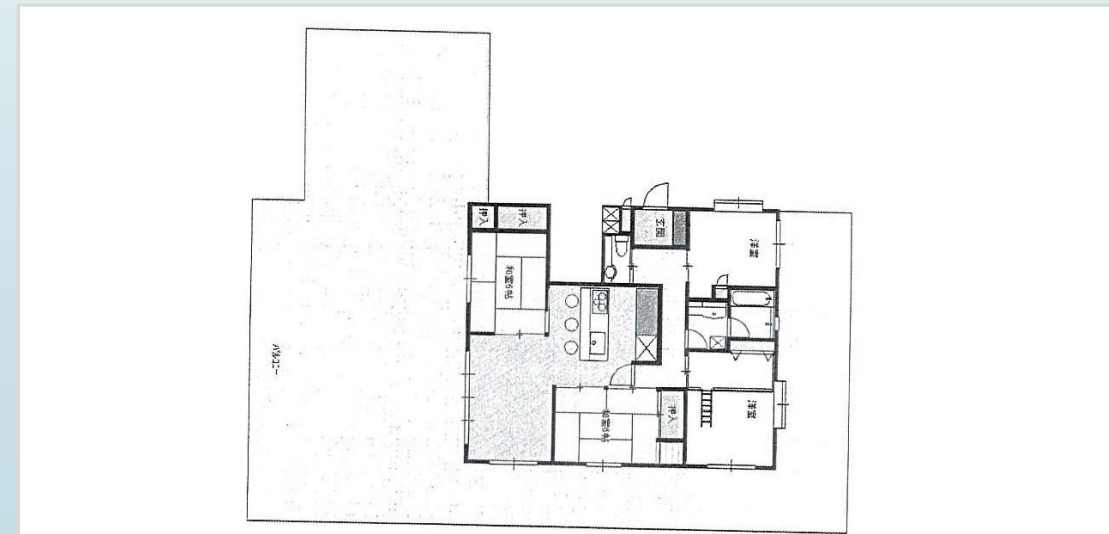
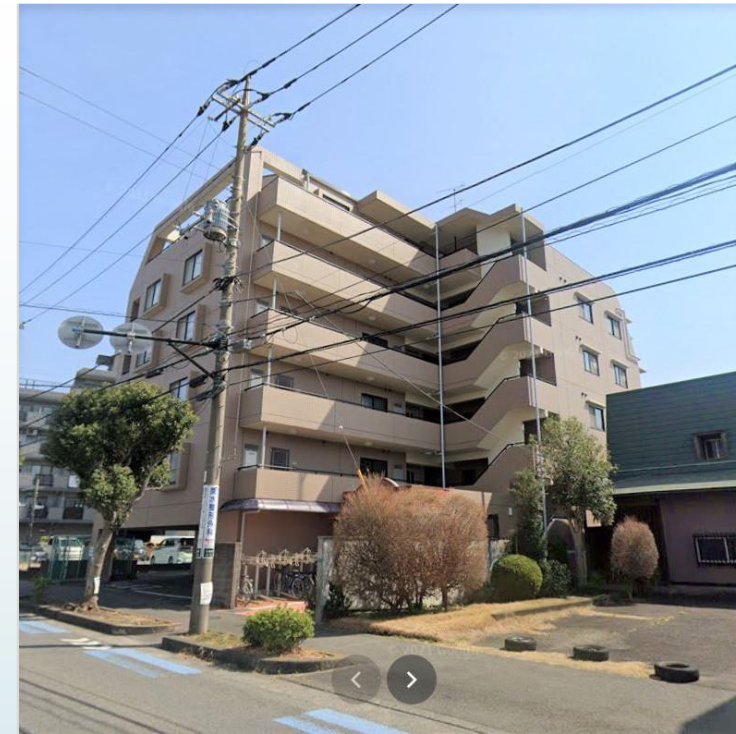
ZAMA RENTAL DESCRIPTION FOR OFF-POST HOUSING

File number
R - 1224

CITY	Yamato-Shi
Unit Type	Apartment
Size (Square feet)	1032 Square feet
Year Built	2000

Rent Amount	198,000 yen
Appreciation fee	198,000 yen
Commission	217,800 yen
Security Deposit	198,000 yen
Total	811,800 yen + Renter's Insurance

Bedrooms	2 rooms	Distance from Camp Zama (Drive)	25 minutes
Bathroom	1 full bath + 1 toilet	Distance from closest station (walking)	Yamato (Odakyu Enoshima-line, Sotetsu-line)
Tatami Room	2 rooms		9 minutes
Parking Space	1 car park		
Pet	No		



ZAMA RENTAL DESCRIPTION FOR OFF-POST HOUSING

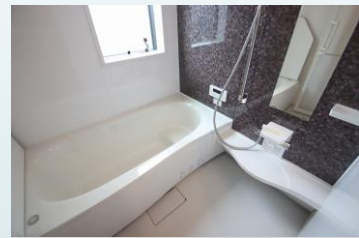
File number
E - 2023

CITY	Ebina-Shi
Unit Type	Apartment
Size (Square feet)	975 Square feet
Year Built	2021

Rent Amount	239,000 yen
Appreciation fee	239,000 yen
Commission	N/A
Security Deposit	239,000 yen
Total	717,700 yen + Renter's Insurance

Bedrooms	3 rooms
Bathroom	1 full bath + 1 toilet
Tatami Room	0 rooms
Parking Space	1 car park
Pet	No

Distance from Camp Zama (Drive)	25 minutes
Distance from closest station (walking)	Ebina (Odakyu-Odawara-line, Sotetsu-line) 10 minutes each



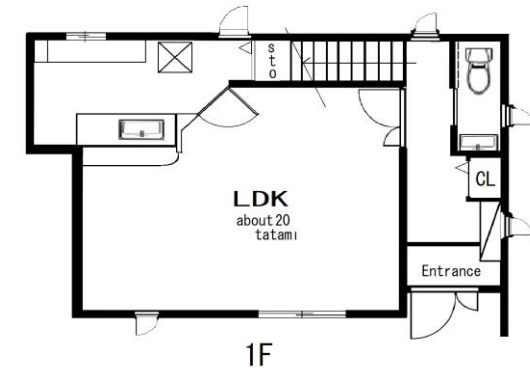
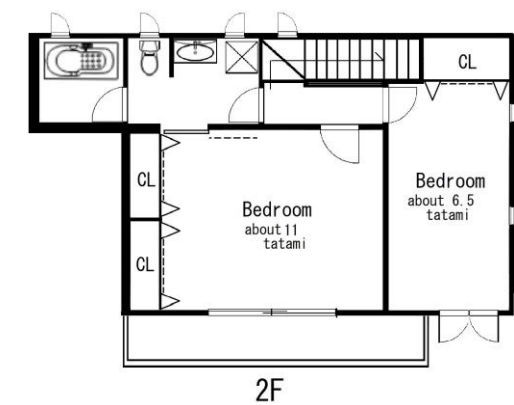
ZAMA RENTAL DESCRIPTION FOR OFF-POST HOUSING

File number
R - 1238

CITY	Yamato-Shi
Unit Type	Town House
Size (Square feet)	957 Square feet
Year Built	2013

Rent Amount	177,000 yen
Appreciation fee	177,000 yen
Commission	194,700 yen
Security Deposit	177,000 yen
Total	725,700 yen + Renter's Insurance

Bedrooms	2 rooms	Distance from Camp Zama (Drive)	20 minutes
Bathroom	1 full bath + 2 toilet	Distance from closest station (walking)	Minamirinkan (Odakyu Enoshima-line)
Tatami Room	0 rooms		6 minutes
Parking Space	1 car park		
Pet	No		



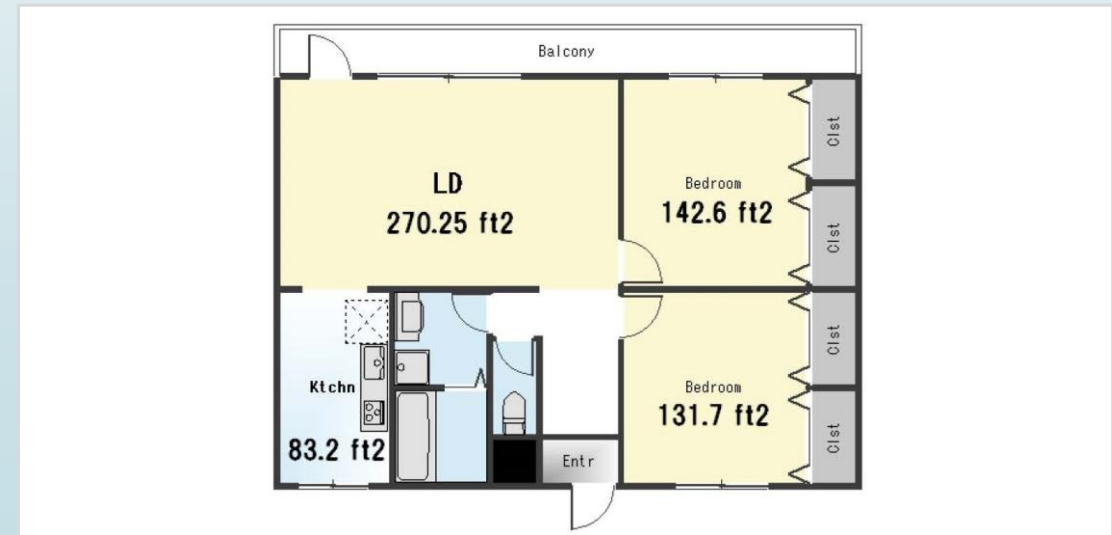
ZAMA RENTAL DESCRIPTION FOR OFF-POST HOUSING

File number
Z-2162

CITY	Zama-Shi
Unit Type	Apartment
Size (Square feet)	871 Square feet
Year Built	1991

Rent Amount	150,000 yen
Appreciation fee	150,000 yen
Commission	165,000 yen
Security Deposit	150,000 yen
Total	615,000 yen + Renter's Insurance

Bedrooms	2 rooms	Distance from Camp Zama (Drive)	10 minutes
Bathroom	1 full bath + 1 toilet	Distance from closest station (walking)	Zama (Odakyu-Odawara-line)
Tatami Room	0 room		10 minutes
Parking Space	1 car park		
Pet	Negotiable		



ZAMA RENTAL DESCRIPTION FOR OFF-POST HOUSING

File number
Z- 2188

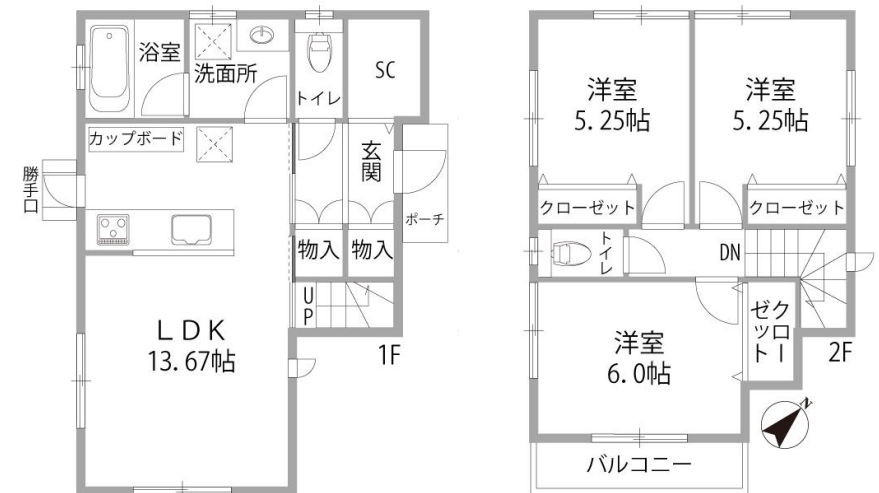
CITY	Zama-Shi
Unit Type	House
Size (Square feet)	831 Square feet
Year Built	2010

Rent Amount	170,000 yen
Appreciation fee	170,000 yen
Commission	187,000 yen
Security Deposit	170,000 yen
Total	697,000 yen + Renter's Insurance

Bedrooms	3 rooms	Distance from Camp Zama (Drive)	5 minutes
Bathroom	1 full bath + 2 toilet	Distance from closest station (walking)	Sobudai-Mae (Odakyu-Odawara-line)
Tatami Room	0 room		16 minutes
Parking Space	1 car park		
Pet	N/A		



1.2 x 1.8"



ZAMA RENTAL DESCRIPTION FOR OFF-POST HOUSING

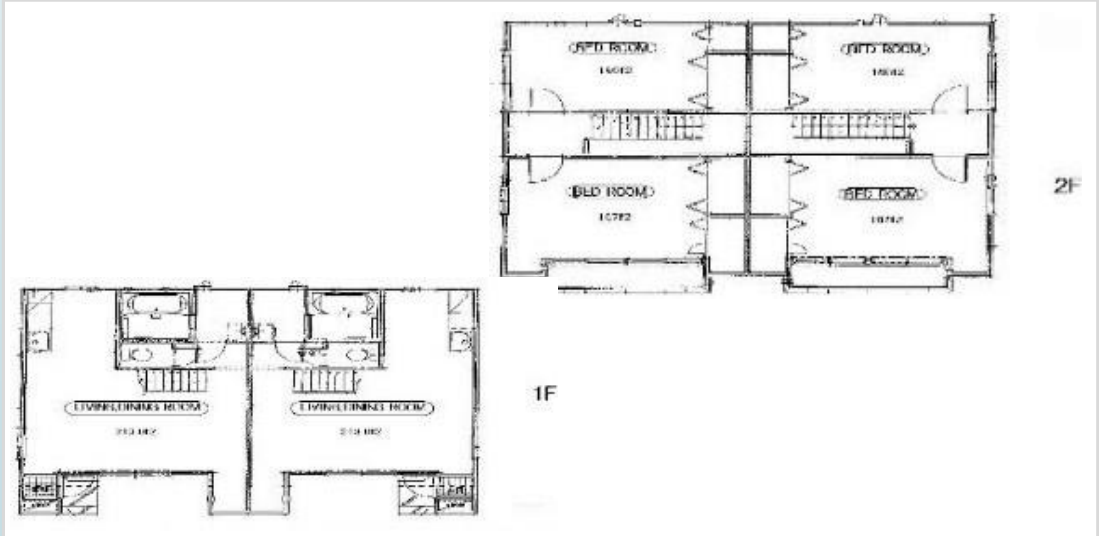
File number
G-2071

CITY	Sagamihara-Shi
Unit Type	Duplex
Size (Square feet)	819 Square feet
Year Built	2007

Rent Amount	160,000 yen
Appreciation fee	160,000 yen
Commission	176,000 yen
Security Deposit	160,000 yen
Total	656,000 yen + Renter's Insurance

Bedrooms	2 rooms
Bathroom	1 full bath + 1 toilet
Tatami Room	0 room
Parking Space	2 car park
Pet	Negotiable

Distance from Camp Zama (Drive)	5 minutes
Distance from closest station (walking)	Shimomizo (Sagami-line) 25 minutes



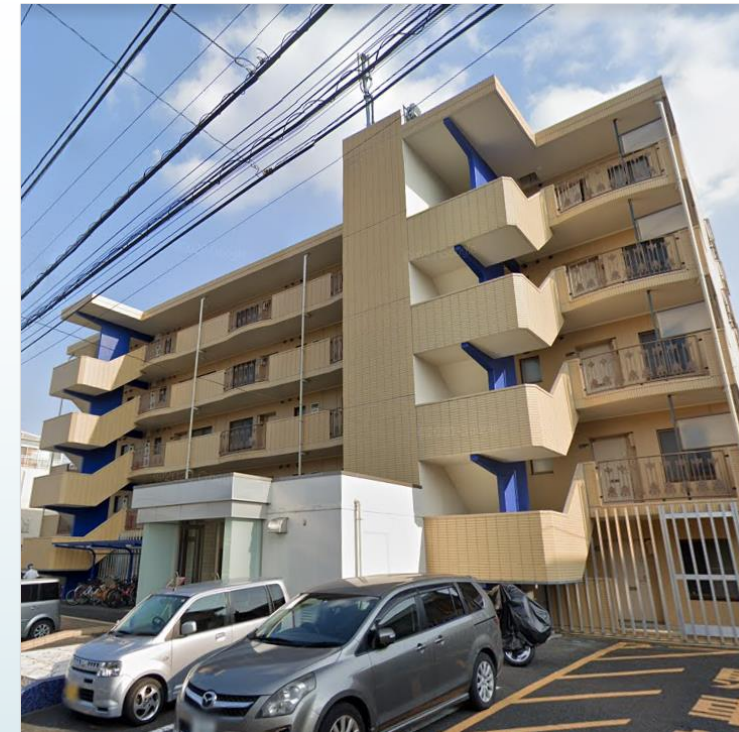
ZAMA RENTAL DESCRIPTION FOR OFF-POST HOUSING

File number
A -0414

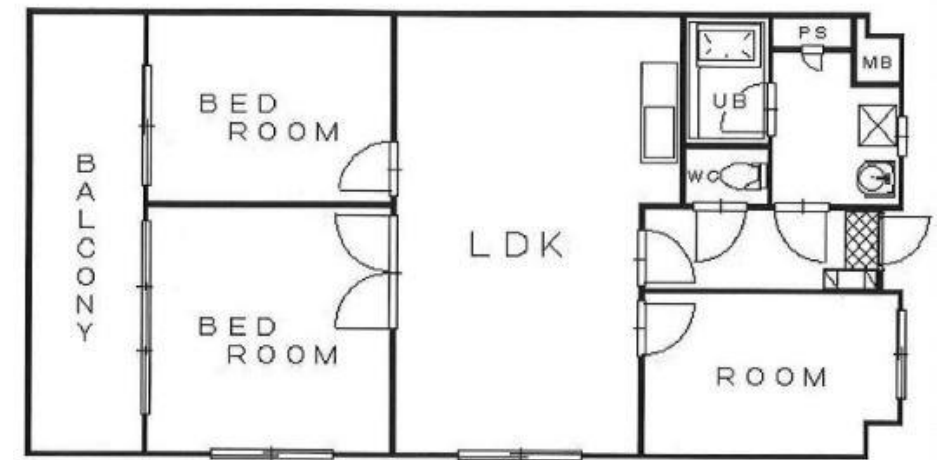
CITY	Ayase-Shi
Unit Type	Apartment
Size (Square feet)	767 Square feet
Year Built	1994

Rent Amount	146,000 yen
Appreciation fee	146,000 yen
Commission	160,600 yen
Security Deposit	146,000 yen
Total	598,500 yen + Renter's Insurance

Bedrooms	3 rooms	Distance from Camp Zama (Drive)	20 minutes
Bathroom	1 full bath + 1 toilet	Distance from closest station (walking)	Kashiwadai or Sagamino (Sotetsu-main-line)
Tatami Room	0 room		15 minutes
Parking Space	1 car park		
Pet	No		



1.2 x 1.8"



ZAMA RENTAL DESCRIPTION FOR OFF-POST HOUSING

File number
E-1251

CITY	Ebina-Shi
Unit Type	Apartment
Size (Square feet)	650 Square feet
Year Built	2006

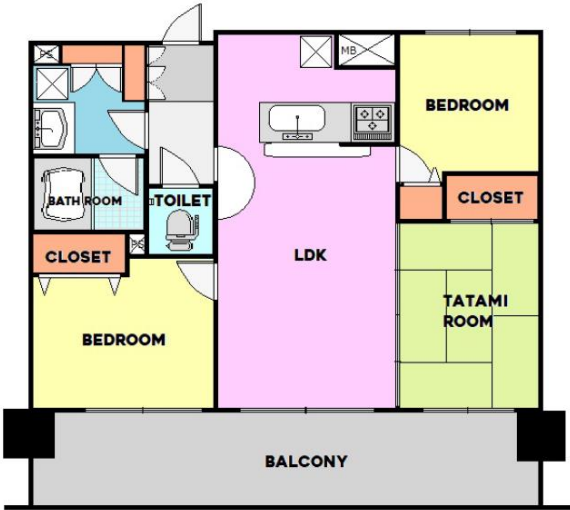
Rent Amount	154,000 yen
Appreciation fee	154,000 yen
Commission	169,400 yen
Security Deposit	154,000 yen
Total	697,000 yen + Renter's Insurance


Bedrooms	2 rooms
Bathroom	1 full bath + 1 toilet
Tatami Room	0 room
Parking Space	1 car park
Pet	No

Distance from Camp Zama (Drive)	20 minutes
Distance from closest station (walking)	Atsugi (Odakyu-line) 1 minutes



1.2 x 1.8"





Should you have any question or need further information, please feel free to contact us.

Off-Post housing Counselor

- Nagaoka: kenichi.nagaoka.ln@mail.mil
- Ito: natsuko.ito.ln@mail.mil

Business Hours

Mon to Fri : 0800-1200, 1300-1600

Sat, Sun, and Holiday : Closed

***You are required to report to the Housing Services Office serving your existing and new duty stations before you make housing arrangements for renting, leasing, or purchasing any off-post housing.**

***This list is updated every 1st, 3rd Monday.**

***Listing in Housing Office is updated every Monday.**