

Welcome to Army Camp Zama

OFF-POST Housing

The Housing Service Office (HSO) is here to help you find a suitable house or apartment. The objective of the HSO is provide all US Forces personnel with a personalized service to assist them in locating suitable, non-discriminatory, community housing and that such housing is located reasonably near the applicant's duty station. We will provide all of the assistance we possibly can. Please feel free to contact us with any questions or problems about off-base housing.

Business Hours

Mon to Fri : 0800-1200, 1300-1600

Sat, Sun, and Holiday : Closed

***You are required to report to the Housing Services Office serving your existing and new duty stations before you make housing arrangements for renting, leasing, or purchasing any off-post housing.**

***This list is updated every 1st, 3rd Monday.**

***Listing in Housing Office is updated every Monday.**

ZAMA RENTAL DESCRIPTION FOR OFF-POST HOUSING

File number
R-1213

CITY	Yamato-Shi
Unit Type	Apartment
Size (Square feet)	1980.00 Square feet
Year Built	1995

Rent Amount	270,000 yen
Appreciation fee	270,000 yen
Commission	297,000 yen
Security Deposit	270,000 yen
Total	1,107,000 yen + Renter's Insurance

Bedrooms	3 rooms
Bathroom	1 full bath + 2 toilet
Tatami Room	0 room
Parking Space	1 car park
Pet	No

Distance from Camp Zama (Drive)	20 minutes
Distance from closest station (walking)	Chuo Rinkan (Odakyu Enoshima / Denen Toshi-line) 3 minutes



File number
G-2173

CITY	Sagamihara-Shi
Unit Type	Apartment
Size (Square feet)	1626.9 Square feet
Year Built	1989

Rent Amount	220,000 yen
Appreciation fee	220,000 yen
Commission	242,000 yen
Security Deposit	220,000 yen
Total	902,000 yen + Renter's Insurance

Bedrooms	2 rooms	Distance from Camp Zama (Drive)	35 minutes
Bathroom	1 full bath + 2 toilet	Distance from closest station (walking)	Yabe (JR Yokohama-line) 10 minutes
Tatami Room	1 room		
Parking Space	1 car park		
Pet	Negotiable		



1.2 x 1.8"



ZAMA RENTAL DESCRIPTION FOR OFF-POST HOUSING

File number
G-2145

CITY	Sagamihara-Shi
Unit Type	House
Size (Square feet)	1380 Square feet
Year Built	2011

Rent Amount	225,000 yen
Appreciation fee	225,000 yen
Commission	247,500 yen
Security Deposit	225,000 yen
Total	922,500 yen + Renter's Insurance

2edrooms	2 rooms	Distance from Camp Zama (Drive)	20 minutes
Bathroom	1 full bath + 2 toilet	Distance from closest station (walking)	Sagami-Ono (Odakyu Odawara/Enoshima -line)
Tatami Room	0 room		10 minutes
Parking Space	1 car park		
Pet	No		



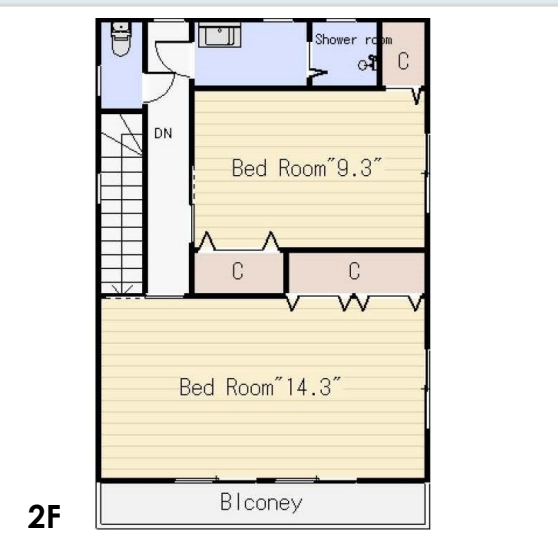
ZAMA RENTAL DESCRIPTION FOR OFF-POST HOUSING

File number
G-1082

CITY	Sagamihara-Shi
Unit Type	House
Size (Square feet)	1270 Square feet
Year Built	2011

Rent Amount	211,000 yen
Appreciation fee	211,000 yen
Commission	232,100 yen
Security Deposit	211,000 yen
Total	865,100 yen + Renter's Insurance

Bedrooms	2 rooms	Distance from Camp Zama (Drive)	20 minutes
Bathroom	1 full bath + 2 toilet	Distance from closest station (walking)	SagamiOno (Odakyu-Odawara-line) or Higashirinkan (Odakyu-Enoshima-line)
Tatami Room	0 room		12 minutes each
Parking Space	1 car park		
Pet	No		



File number
E-2024

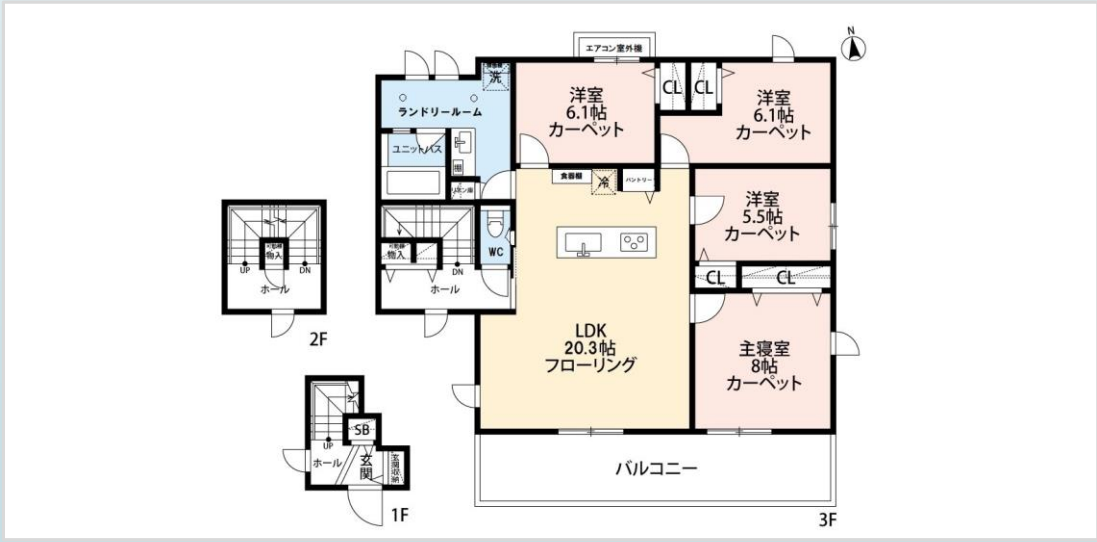
CITY	Ebina-Shi
Unit Type	Apartment
Size (Square feet)	1243 Square feet
Year Built	2021

Rent Amount	300,000 yen
Appreciation fee	300,000 yen
Commission	330,000 yen
Security Deposit	300,000 yen
Total	1,230,000 yen + Renter's Insurance

Bedrooms	4 rooms
Bathroom	1 full bath + 1 toilet
Tatami Room	0 room
Parking Space	1 car park
Pet	No

Distance from Camp Zama (Drive)	25 minutes
Distance from closest station (walking)	Ebina (Odakyu-Odawara-line, Sotetsu-line) 10 minutes each

ZAMA RENTAL DESCRIPTION FOR OFF-POST HOUSING



ZAMA RENTAL DESCRIPTION FOR OFF-POST HOUSING

File number
R -2061

CITY	Yamato-Shi
Unit Type	Apartment
Size (Square feet)	1205 Square feet
Year Built	1992

Rent Amount	213,000 yen
Appreciation fee	213,000 yen
Commission	234,300 yen
Security Deposit	213,000 yen
Total	873,300 yen + Renter's Insurance

Bedrooms	3 rooms
Bathroom	1 full bath + 1 toilet
Tatami Room	N/A
Parking Space	1 car park
Pet	No

Distance from Camp Zama (Drive)	15 minutes
Distance from closest station (walking)	Minami-Rinkan (Odakyu Enoshima-line) 5 minutes



1.2 x 1.8"



ZAMA RENTAL DESCRIPTION FOR OFF-POST HOUSING

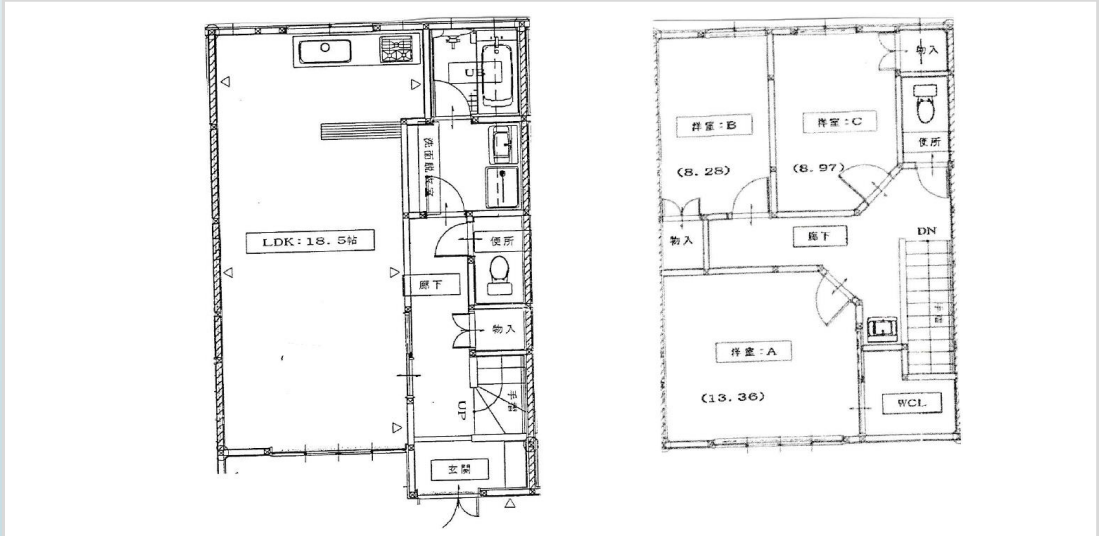
File number
A -0640

CITY	Ayase-Shi
Unit Type	Town House
Size (Square feet)	1063 Square feet
Year Built	2002

Rent Amount	175,000 yen
Appreciation fee	175,000 yen
Commission	192,500 yen
Security Deposit	175,000 yen
Total	717,500 yen + Renter's Insurance

Bedrooms	3 rooms
Bathroom	1 full bath + 2 half bath
Tatami Room	N/A
Parking Space	2 car park
Pet	Negotiable

Distance from Camp Zama (Drive)	20 minutes
Distance from closest station (walking)	Kashiwadai (Sotetsu-main-line) 20 minutes



ZAMA RENTAL DESCRIPTION FOR OFF-POST HOUSING

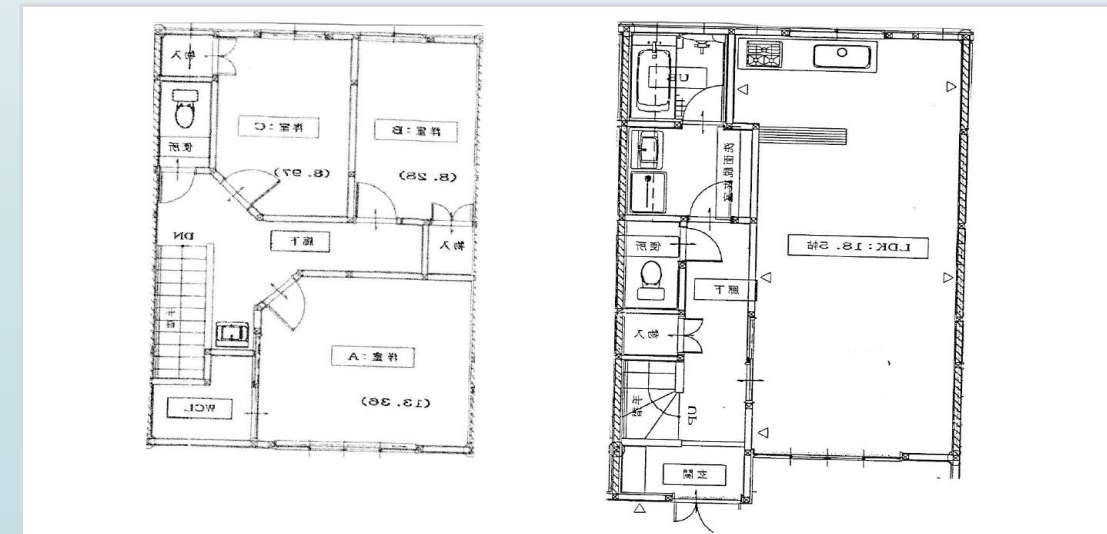
File number
A -0641

CITY	Ayase-Shi
Unit Type	Town House
Size (Square feet)	1063 Square feet
Year Built	2002

Rent Amount	175,000 yen
Appreciation fee	175,000 yen
Commission	192,500 yen
Security Deposit	175,000 yen
Total	717,500 yen + Renter's Insurance

Bedrooms	3 rooms
Bathroom	1 full bath + 2 half bath
Tatami Room	N/A
Parking Space	2 car park
Pet	Negotiable

Distance from Camp Zama (Drive)	20 minutes
Distance from closest station (walking)	Kashiwadai (Sotetsu-main-line) 20 minutes



File number
Z-1188

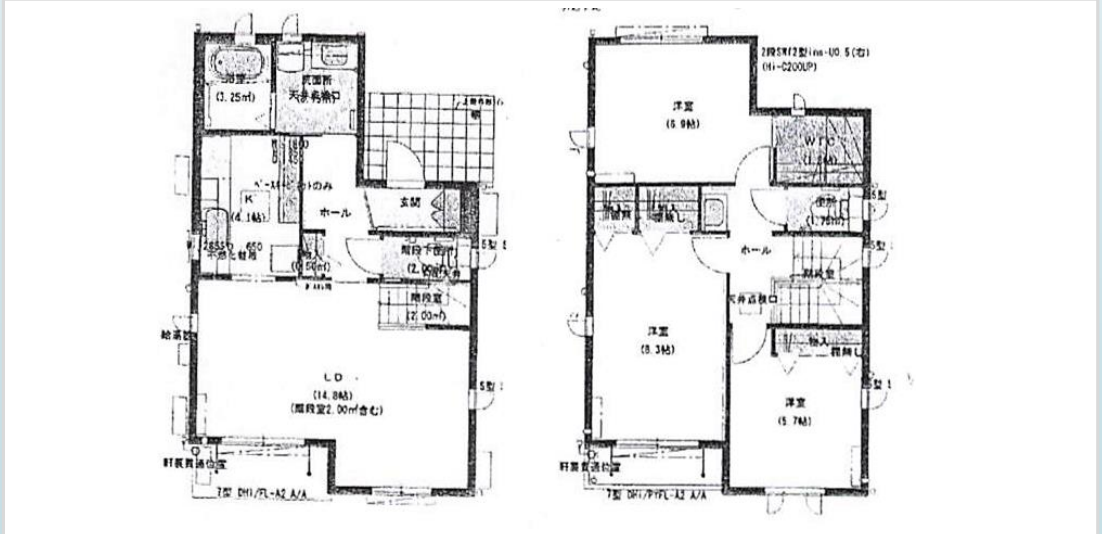
CITY	Zama-Shi
Unit Type	House
Size (Square feet)	1061 Square feet
Year Built	2013

Rent Amount	193,000 yen
Appreciation fee	193,000 yen
Commission	212,300 yen
Security Deposit	193,000 yen
Total	791,300 yen + Renter's Insurance

Bedrooms	3 rooms
Bathroom	1 full bath + 2 toilet
Tatami Room	N/A
Parking Space	1 car park
Pet	No

Distance from Camp Zama (Drive)	8 minutes
Distance from closest station (walking)	Zama (Odakyu-Odawara-line) 20 minutes

ZAMA RENTAL DESCRIPTION FOR OFF-POST HOUSING



File number
E-2022

CITY	Ebina-Shi
Unit Type	Apartment
Size (Square feet)	987 Square feet
Year Built	2021

Rent Amount	260,000 yen
Appreciation fee	260,000 yen
Commission	286,000 yen
Security Deposit	260,000 yen
Total	1,066,000 yen + Renter's Insurance

Bedrooms	3 rooms
Bathroom	1 full bath + 1 toilet
Tatami Room	0 room
Parking Space	1 car park
Pet	No

Distance from Camp Zama (Drive)	25 minutes
Distance from closest station (walking)	Ebina (Odakyu-Odawara- line, Sotetsu-line) 10 minutes each

ZAMA RENTAL DESCRIPTION FOR OFF-POST HOUSING



File number
E-2023

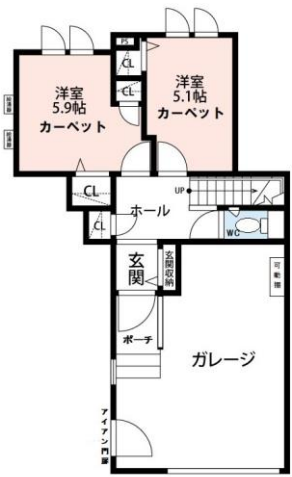
CITY	Ebina-Shi
Unit Type	Apartment
Size (Square feet)	975 Square feet
Year Built	2021

Rent Amount	260,000 yen
Appreciation fee	260,000 yen
Commission	286,000 yen
Security Deposit	260,000 yen
Total	1,066,000 yen + Renter's Insurance

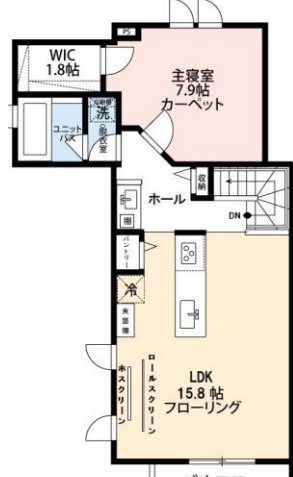
Bedrooms	3 rooms
Bathroom	1 full bath + 1 toilet
Tatami Room	0 room
Parking Space	1 car park
Pet	No

Distance from Camp Zama (Drive)	25 minutes
Distance from closest station (walking)	Ebina (Odakyu-Odawara-line, Sotetsu-line) 10 minutes each

ZAMA RENTAL DESCRIPTION FOR OFF-POST HOUSING



1F



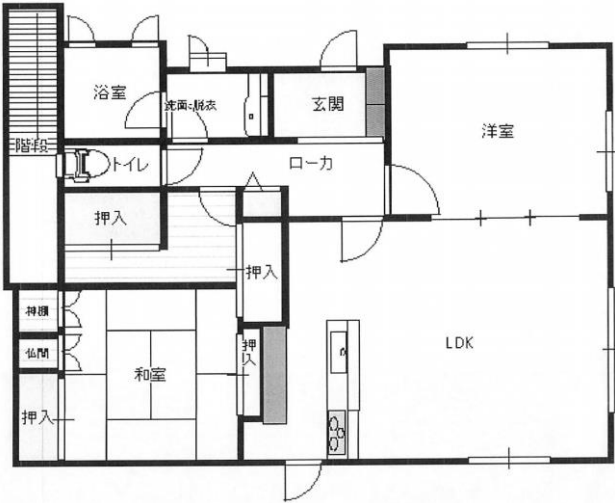
2F

File number
G-1110

CITY	Sagamihara-Shi
Unit Type	Duplex
Size (Square feet)	965.60 Square feet
Year Built	1996

Rent Amount	175,000 yen
Appreciation fee	175,000 yen
Commission	192,500 yen
Security Deposit	175,000 yen
Total	717,500 yen + Renter's Insurance

Bedrooms	1 rooms	Distance from Camp Zama (Drive)	25 minutes
Bathroom	1 full bath + 1 toilet	Distance from closest station (walking)	Sagamiono (Odakyu Odawara- line) 15 minutes
Tatami Room	1 room		
Parking Space	2 car park		
Pet	No		



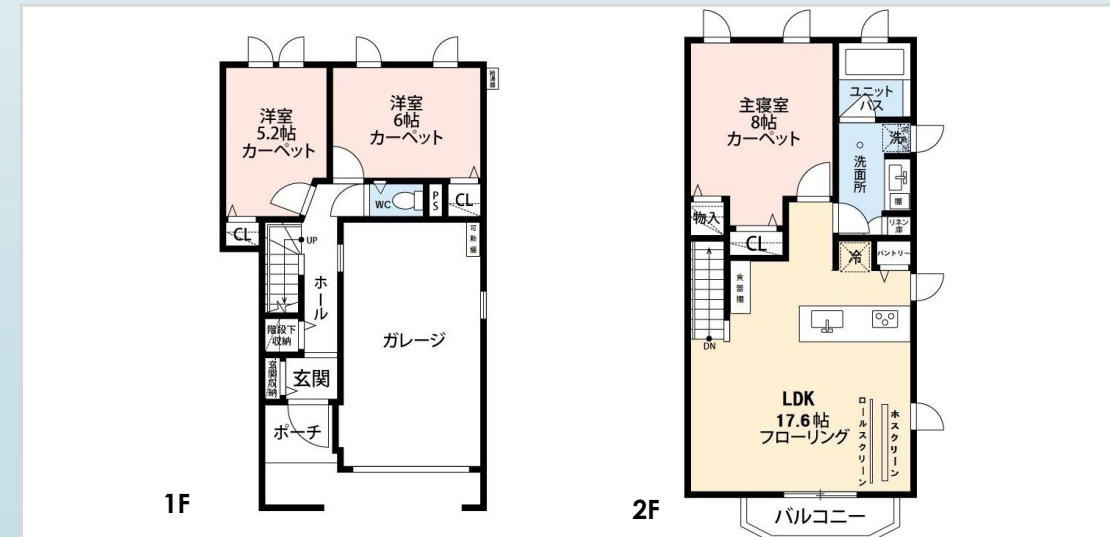
ZAMA RENTAL DESCRIPTION FOR OFF-POST HOUSING

File number
E-2021

CITY	Ebina-Shi
Unit Type	Apartment
Size (Square feet)	928 Square feet
Year Built	2021

Rent Amount	260,000 yen
Appreciation fee	260,000 yen
Commission	286,000 yen
Security Deposit	260,000 yen
Total	1,066,000 yen + Renter's Insurance

Bedrooms	3 rooms	Distance from Camp Zama (Drive)	25 minutes
Bathroom	1 full bath + 1 toilet	Distance from closest station (walking)	Ebina (Odakyu-Odawara-line, Sotetsu-line)
Tatami Room	0 room		10 minutes each
Parking Space	1 car park		
Pet	No		



ZAMA RENTAL DESCRIPTION FOR OFF-POST HOUSING

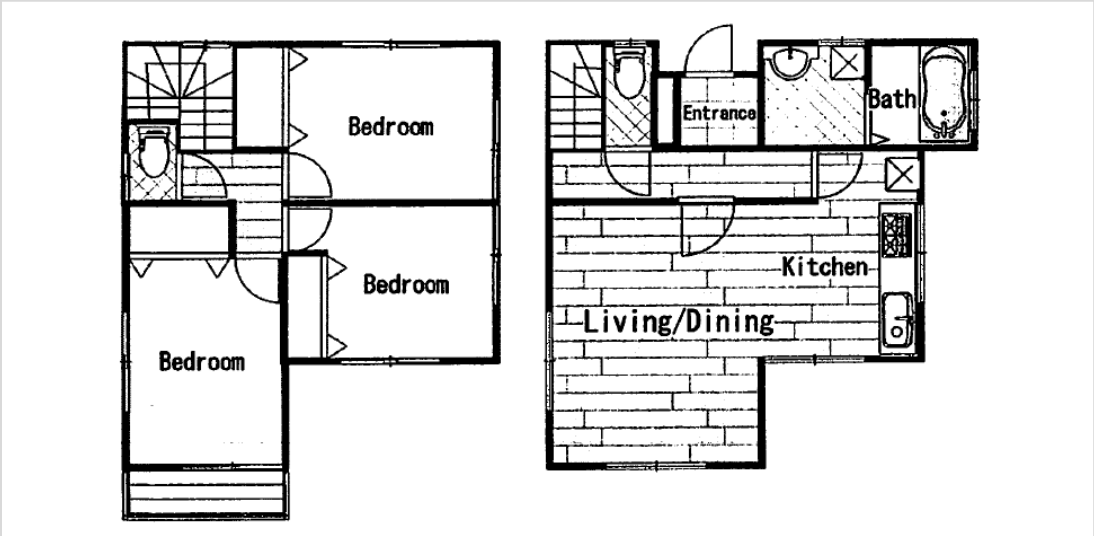
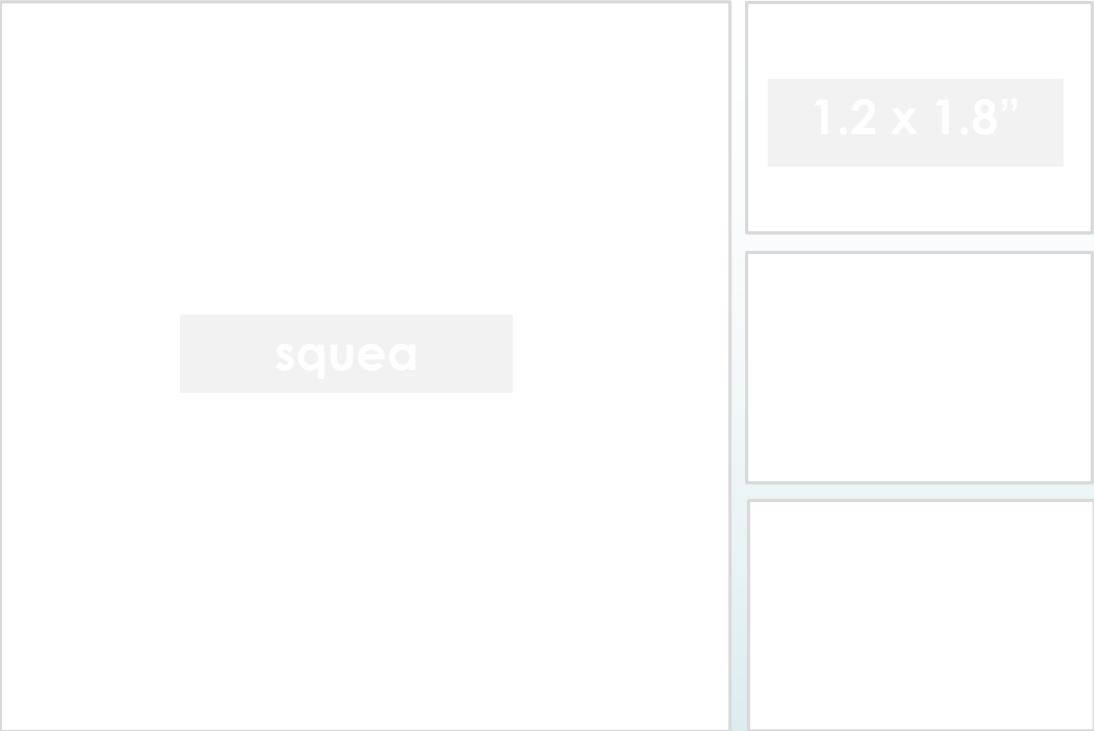
File number
Z-1104

CITY	Zama-Shi
Unit Type	House
Size (Square feet)	890 Square feet
Year Built	2008

Rent Amount	170,000 yen
Appreciation fee	170,000 yen
Commission	187,000 yen
Security Deposit	170,000 yen
Total	688,000 yen + Renter's Insurance

Bedrooms	3 rooms
Bathroom	1 full bath + 2 toilet
Tatami Room	0 room
Parking Space	1 car park
Pet	No

Distance from Camp Zama (Drive)	10 minutes
Distance from closest station (walking)	Soubudai-Mae (Odakyu-Odawara-line) 8 minutes



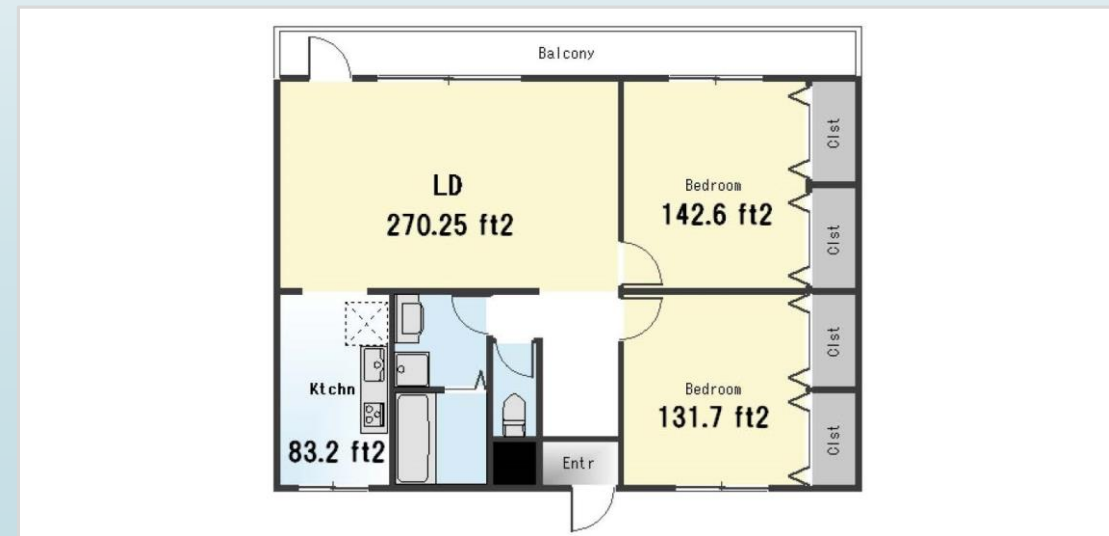
ZAMA RENTAL DESCRIPTION FOR OFF-POST HOUSING

File number
Z-2162

CITY	Zama-Shi
Unit Type	Apartment
Size (Square feet)	871 Square feet
Year Built	1991

Rent Amount	150,000 yen
Appreciation fee	150,000 yen
Commission	165,000 yen
Security Deposit	150,000 yen
Total	615,000 yen + Renter's Insurance

Bedrooms	2 rooms	Distance from Camp Zama (Drive)	10 minutes
Bathroom	1 full bath + 1 toilet	Distance from closest station (walking)	Zama (Odakyu-Odawara-line)
Tatami Room	0 room		10 minutes
Parking Space	1 car park		
Pet	Negotiable		



ZAMA RENTAL DESCRIPTION FOR OFF-POST HOUSING

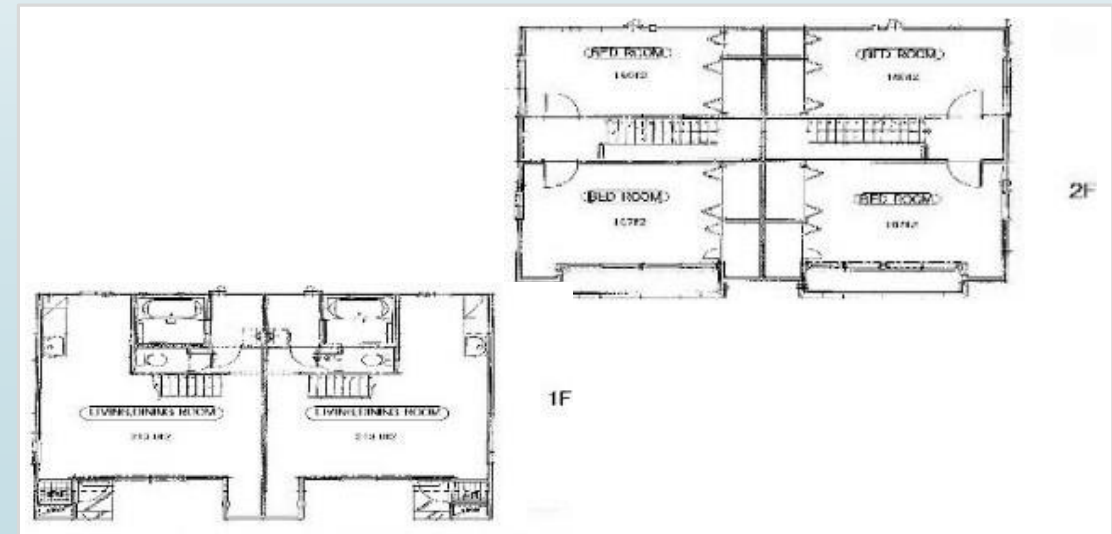
File number
G-2071

CITY	Sagamihara-Shi
Unit Type	Duplex
Size (Square feet)	819 Square feet
Year Built	2007

Rent Amount	160,000 yen
Appreciation fee	160,000 yen
Commission	176,000 yen
Security Deposit	160,000 yen
Total	656,000 yen + Renter's Insurance

Bedrooms	2 rooms
Bathroom	1 full bath + 1 toilet
Tatami Room	0 room
Parking Space	2 car park
Pet	Negotiable

Distance from Camp Zama (Drive)	5 minutes
Distance from closest station (walking)	Shimomizo (Sagami-line) 25 minutes



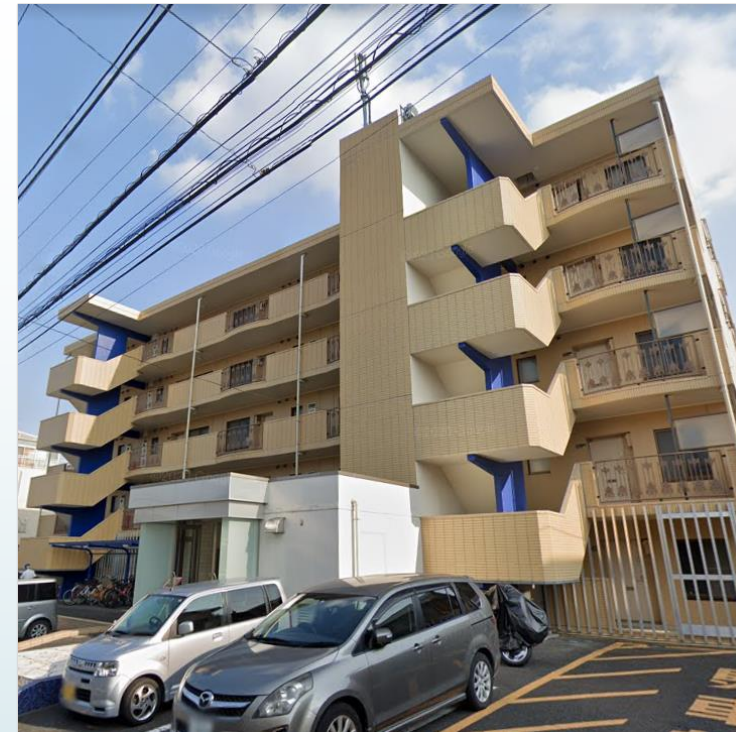
ZAMA RENTAL DESCRIPTION FOR OFF-POST HOUSING

File number
A -0414

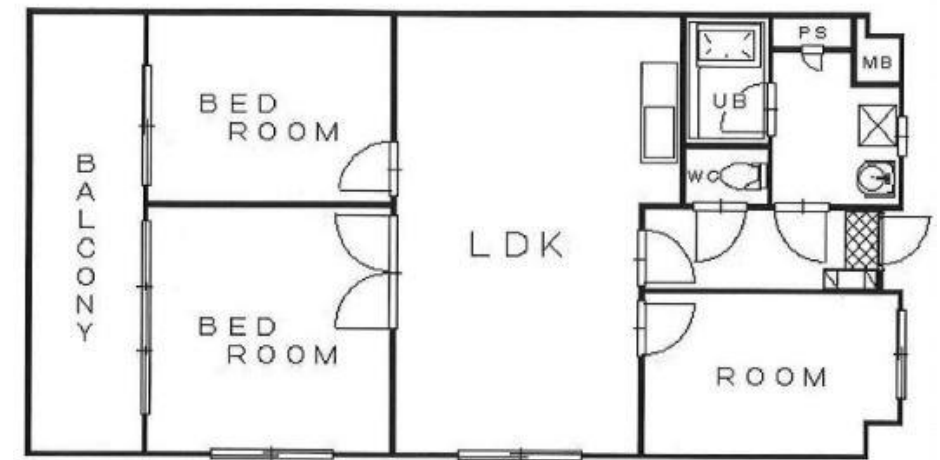
CITY	Ayase-Shi
Unit Type	Apartment
Size (Square feet)	767 Square feet
Year Built	1994


Rent Amount	146,000 yen
Appreciation fee	146,000 yen
Commission	160,600 yen
Security Deposit	146,000 yen
Total	598,500 yen + Renter's Insurance

Bedrooms	3 rooms	Distance from Camp Zama (Drive)	20 minutes
Bathroom	1 full bath + 1 toilet	Distance from closest station (walking)	Kashiwadai or Sagamino (Sotetsu-main-line)
Tatami Room	0 room		15 minutes
Parking Space	1 car park		
Pet	No		



1.2 x 1.8"





Should you have any question or need further information, please feel free to contact us.

Off-Post housing Counselor

- Nagaoka: kenichi.nagaoka.ln@mail.mil
- Ito: natsuko.ito.ln@mail.mil

Business Hours

Mon to Fri : 0800-1200, 1300-1600

Sat, Sun, and Holiday : Closed

***You are required to report to the Housing Services Office serving your existing and new duty stations before you make housing arrangements for renting, leasing, or purchasing any off-post housing.**

***This list is updated every 1st, 3rd Monday.**

***Listing in Housing Office is updated every Monday.**