

# Villaverla (VI) - Refuse Collection 2019

## **SOLID WASTE (SECCO) - (NON-ROTTING TYPE) – (NOT RECYCLABLE ITEMS)**

- Various types of hard plastic (excluding liquid containers)
- Rubber and Styrofoam, Non recyclable paper
- Audio/video cassettes/CDs and their containers
- Nylon film, bags, cellophane, sponges.
- Plastic cutlery, disposable razors.
- Buckets, basins and broken toys (without electronic part)
- Pens and small plastic / bakelite objects
- Carbon paper, oily/dirty or laminated paper
- Nylons, Non recyclable rags, Band aid, Cloth
- Painted wooden objects, coat hangers, bags
- Small pieces of broken ceramic or porcelain
- Diapers, sanitary towels, cosmetics
- Dust from vacuum cleaners
- Cat litter and animal excrement
- Old shoes, Light bulbs, Cigarette butts



### **WHERE TO PUT THEM:**

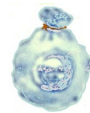
Collect them in the GREEN container (given by town hall and kept inside your house), and **when the container is FULL**, put it on the public street, in front of your dwelling unit the evening before the day they pass to pick it up. **The pick up is every week on THURSDAY**

**Take Note!** **Place only waste that has no other disposal designation.** (See the list above)

## **RECYCLABLE ITEMS**

### **HUMID WASTE (UMIDO) - (ORGANIC – ROTTING TYPE)**

- Bad food, Egg shells
- Vegetable and fruit peelings
- Coffee grounds and tea bags
- Cut flowers and house plants
- Stale bread
- Paper tissues and dirty napkins
- Cold fireplace ashes
- Small bones and seafood shells (clams, mussels)



The humid waste must be collected in **plastic bags** (biodegradable type) that will be closed and placed in the locked BROWN BIN on the public street, nearby your dwelling unit. Key (**is a special tool**) of this bin is given by the town hall office (through the Landlord).

**PUT ONLY THE ITEMS LISTED ABOVE AND NO OTHERS !!**

## PLASTIC AND CANS:

- Plastic: bottles (up to 5 lts.), plates and glasses, shopping bags
- Cans: aluminum (drinks), tuna & meat, vegetables & other foods
- Throwaway food containers (also in styrofoam material)



All the items, cleaned and washed, must be put in the proper blue container you'll find located in many town areas  
**Squeeze and reduce bottles.**

## GLASS (VETRO):

- Bottles, glasses, glass vases, crystal (do not include metal or plastic cover)

**NO:** Ceramics, porcelains (ECOCENTRO), light bulb or neon tubes (DRY WASTE).

Glass has to be put in the proper BELL containers you'll find located in many town areas  
**DON'T USE PLASTIC BAGS** and don't leave material outside the bell.



## PAPER AND CARDBOARD (CARTA):

- Newspapers, magazines, books, workbooks, papers (without plastic parts)
- Folded cardboards, cardboard boxes
- Tetra pack (milk, juice: empty, clean, without plastic parts and squeezed)
- Food paper clean (without plastic parts)

**NO:** Laminated papers, oily papers, carbon papers, chemical papers.

Paper and cardboard have to be put in the proper containers you'll find located in many town areas - **DON'T USE PLASTIC BAGS**



## DIAPERS (PANNOLINI):

- Diapers

They can go with Dry waste, but if you have a need of a personal bigger container, you can request a specific bin (WHITE BIN) for a personal use.  
Bin is given by the town hall office (through the Landlord).



## WHAT TO BRING TO ECOCENTRO:

- GREEN & BRANCHES: Branches, leaves, plants (without ground), vegetal residues
- WOOD: Wooden (**and wood only**) from: constructions, furniture, packing.
- OILS: Vegetable oils (cooking), mineral oils (motors)
- RAEE: Wastes from electric/electronic house equipments or appliances
- R.U.P. Dangerous refuses, batteries, car batteries, expired medicines
- Bulky RSI Mattresses, mirrors, various bulky packages, sofa, easy chairs, etc.

- DURABLE GOODS: Refrigerators, dishwashers, washers, TV, computers, printers.
- OTHERS: Old shoes, clothing, car tires, glass, iron.
- LABELED “T” & “F” Glues, sprays, insecticides, acids, solvents, etc.

Products that have this symbol on the container  
be taken to the **ECOCENTRO**.



**EVEN WHEN EMPTY**, have to

**ECOCENTRO ADDRESS:** – Via Stadio, VILLAVERLA - **CARD IS NEEDED** (LL)

### **ECOCENTRO TIMETABLE:**

**(SUMMER – Legal time)**

**WEDNESDAY: 14.30 – 19.00**

**SATURDAY: 09.00 – 12.00 / 14.00 – 17.00**

**(WINTER – Solar time)**

**WEDNESDAY: 14.30 – 18.00**

**SATURDAY: 09.00 – 12.00 / 14.00 – 17.00**

*For further information please call Housing Office:* DSN 637 7905 or 0444 617905