

Pozzoleone - Refuse Collection

DRY WASTE (SECCO) - (NON-ROTTING TYPE) – (NOT RECYCLABLE ITEMS)

- Various types of plastic (excluding liquid containers)
- Rubber and Styrofoam, Non recyclable paper
- Audio/video cassettes/CDs and relative containers
- Nylon film, bags, cellophane
- Plastic plates and cutlery
- Buckets, basins and toys
- Pens and small plastic Bakelite objects
- Carbon paper, oily/laminated paper
- Nylons, Non recyclable rags, Band aid, Cloth
- Painted wooden objects, coat hangers, bags
- Small pieces of broken ceramic or porcelain
- Diapers, sanitary towels, cosmetics
- Dust from vacuum cleaners
- Old shoes, Light bulbs, Cigarette butts

GREY



WHERE TO PUT THEM:

Collect them in **transparent plastic bags** that will be put on the proper **GREY WHEELED BIN** with microchip (given by the Municipality). Once the bin is FULL it will be placed on the public street, nearby your dwelling unit, the evening before the day of pickup.

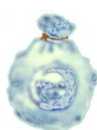
Pick up is every two weeks on **FRIDAY** – See SCHEDULE

Take Note! Place only waste that has no other disposal designation. (See the list above)

RECYCLABLE ITEMS

HUMID WASTE (UMIDO) - (ORGANIC – ROTTING TYPE)

- Bad food, Egg shells
- Vegetable and fruit peelings
- Coffee grounds and tea bags
- Cat litter and animal excrement
- Cut flowers and house plants
- Stale bread
- Paper tissues and dirty napkins
- Cold fireplace ashes
- Small bones and seafood shells (clams, mussels)



1

A

The humid waste must be collected in **mater-bi (biodegradable) bags** kept in the house in the **small brown** container (1) that will be closed and placed in the proper **BUCKET (A)** – (given by the Municipality). The bucket in turn will be put on the public street, nearby your dwelling unit, the evening before the day of pickup (REMEMBER to take it back).

Pick up is twice a week on **TUESDAY and SATURDAY.**

Pick up Variation: No Pick up on: Jan 1st, 2019;

PUT ONLY THE ITEMS LISTED ABOVE AND NO OTHERS !!

PLASTIC AND CANS:

- Plastic bottles (up to 5 lt.- pressed & closed), shopping bags, gardening vases
- Cans: aluminum (drinks), tuna & meat, vegetables & other foods
- Throwaway food containers (also in polystyrene material)

**Transparent
plastic bag**



All the items, once cleaned and washed, must be collected in **transparent plastic bags only** that must be placed on the public street, nearby your dwelling unit, the evening before the day of pickup. **Squeeze and reduce bottles.**

Pick up is every two weeks on FRIDAY (alternated with PAPER) – (**See SCHEDULE**)

GLASS (VETRO):

- Bottles, glasses, glass vases, crystal (do not include metal or plastic cover)

NO: Ceramics, porcelains, light bulb or neon tubes.

To: ECO CENTRO

PAPER AND CARDBOARD (CARTA):

- Newspapers, magazines, books, workbooks, papers (without plastic parts)
- Folded cardboards, cardboard boxes
- Tetra pack (milk, juice: empty, clean and squeezed)
- Food paper (without plastic parts)

NO: Plasticized papers, oily papers, carbon papers, chemical papers.

To: ECO CENTRO

GLASS and PAPER & CARDBOARD MUST BE TAKEN TO THE ECOCENTRO ALONG WITH THE BELOW MENTIONED ITEMS**

WHAT TO BRING TO ECOCENTRO:

- | | |
|---------------------|--|
| • GREEN & BRANCHES: | Branches, leaves, plants (without ground), vegetal residues |
| • WOOD: | Wooden parts only from: constructions, furniture, packing. |
| • OILS: | Vegetable oils (cooking) |
| • RAEE: | Wastes from electric/electronic house equipments or appliances |
| • R.U.P. | Dangerous refuses, batteries, car batteries, expired medicines |
| • Bulky RSI | Mattresses, mirrors, various bulky packages, sofa, easy chairs, etc. |
| • DURABLE GOODS: | Refrigerators, dishwashers, washers, TV, computers, printers. |
| • OTHERS: | Old shoes, clothing, car tires, glass, iron. |
| • LABELED “T” & “F” | Glues, sprays, insecticides, acids, solvents, etc. |

Products that have this symbol on the container be taken to the ECOCENTRO.



EVEN WHEN EMPTY, have to

ECOCENTRO ADDRESS: Via Segna Vecchia – FRIOLA di POZZOLEONE

ECOCENTRO TIMETABLE: CARD IS NEEDED

TUESDAY: 14:00 – 17:00

SATURDAY: 9:00 – 12:00 / 14:00 – 17:00

“DOOR TO DOOR” PICK UP SCHEDULE - (2019)

MONTH	SOLID WASTE Pick Up Day Tuesday	PLASTIC/CANS Pick Up Day Friday
January	11 - 25	4 - 18
February	8 - 22	1 - 15
March	8 - 22	1 - 15 - 29
April	5 - 19	12 - 26
May	3 - 17 - 31	10 - 24
June	14 - 28	7 - 21
July	12 - 26	5 - 19
August	9 - 23	2 - 16 - 30
September	6 - 20	13 - 27
October	4 - 18	11 - 25
November	1 - 15 - 29	8 - 22
December	13 - 27	6 - 20
January 2020	10 - 24	3 - 17 - 31
February 2020	7 - 21	14 - 28

For further information please call Housing Office: DSN 637 7919/7905 or 0444 617919/617905