

S. Pietro in Gu' (PD) – Refuse Collection

Zone B

SOLID WASTE (SECCO) - (NON-ROTTING TYPE) – (NOT RECYCLABLE ITEMS)

- Various types of plastic (excluding liquid containers)
- Rubber and Styrofoam, Non recyclable paper
- Audio/video cassettes/CDs and relative containers
- Nylon film, bags, cellophane
- Plastic plates and cutlery
- Buckets, basins and toys
- Pens and small plastic Bakelite objects
- Carbon paper, oily/laminated paper
- Nylons, Non recyclable rags, Band aid, Cloth
- Painted wooden objects, coat hangers, bags
- Small pieces of broken ceramic or porcelain
- Diapers, sanitary towels, cosmetics
- Dust from vacuum cleaners
- Old shoes, Light bulbs, Cigarette butts

**GREY
BIN**



WHERE TO PUT THEM:

Collect them in **transparent plastic bags** that will be put on the proper **GREY WHEELED BIN** with microchip (given by the Municipality). Once the bin is FULL will be put on the public street, nearby your dwelling unit, the evening before the day of pickup.

Pick up is every two weeks on TUESDAY – See SCHEDULE

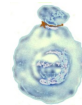
SCHEDULE VARIATION: *Tuesday, Jan 1st → Thursday, Jan 3rd;*

Take Note! Place only waste that has no other disposal designation. (See the list above)

RECYCLABLE ITEMS

HUMID WASTE (UMIDO) - (ORGANIC – ROTTING TYPE)

- Bad food, Egg shells
- Vegetable and fruit peelings
- Coffee grounds and tea bags
- Rotten vegetables
- Peanuts, nutshell



BROWN



The humid waste must be collected in **mater-bi (biodegradable) bags** that will be closed and placed in the proper **BROWN BUCKET** (given by the Municipality). The bucket in turn will be put on the public street, nearby your dwelling unit, the evening before the day of pickup. (REMEMBER to take it back).

Pick up is twice a week every WEDNESDAY and SATURDAY

SCHEDULE VARIATION: *NO PICK UP ON: May 1st, Dec 25th, Jan 1st, 2020;*

PUT ONLY THE ITEMS LISTED ABOVE AND NO OTHERS !!

PLASTIC AND CANS:

- Bottles & recipients in plastic PET, shopping bags
- Cans: aluminum (drinks), tuna & meat, vegetables & other foods
- Throwaway food containers (also in polystyrene material)



All the items, once cleaned and washed, must be collected in **TRANSPARENT OR SEMI-TRANSPARENT PLASTIC BAGS** (about 80 lbs) to be put on the public street, nearby your dwelling unit, the evening before the day of pickup. **Squeeze and reduce bottles.**

Pick up is every two weeks on FRIDAY (alternated with PAPER - See SCHEDULE)

PAPER AND CARDBOARD (CARTA):

- Newspapers, magazines, books, workbooks, papers (without plastic parts)
- Folded cardboards, cardboard boxes
- Tetra pack (milk, juice: empty, clean and squeezed)
- Food paper (without plastic parts)

**YELLOW
BIN**



NO: Laminated papers, oily papers, carbon papers, chemical papers and cutlery.

Papers and cardboard must be collected in the proper **YELLOW WHEELED BIN** (given by the Municipality) to be put on the public street, nearby your dwelling unit, the evening before the day of pickup.

Pick up is every two weeks on FRIDAY (alternated with PLASTIC – See SCHEDULE)

GLASS (VETRO):

- Bottles, glass vases, crystal, glass containers (clean & without metal or plastic cover)

NO: Ceramics, porcelains, light bulb or neon tubes, mirrors.

Glass has to be put in the proper **BLUE WHEELED BIN** (given by the Municipality) to be placed on the public street, nearby your dwelling unit, the evening before the day of pick up.

Pick up is once a month on THURSDAY – See SCHEDULE

If is needed it can be taken to the ECOCENTRO.

BLUE BIN



SCHEDULE VARIATION: *Thursday, Aug 15th → Wednesday, Aug 14th;*

WHAT TO BRING TO ECOCENTRO (ISOLA ECOLOGICA):

- **GREEN & BRANCHES:** Branches, leaves, plants (without ground), vegetal residues
- **GLASS:** Bottles, vases, jars and others.
- **IRON OBJECTS:** Of any type and shape included jar lids.
- **RAEE:** Wastes from electric/electronic house equipments or appliances
- **R.U.P.** Dangerous refuses, batteries, car batteries, expired medicines
- **Bulky RSI** Mattresses, mirrors, various bulky packages, sofa, easy chairs, etc.
- **DURABLE GOODS:** Refrigerators, dishwashers, washers, TV, computers, printers.
- **OTHERS:** Old shoes, clothing, car tires, glass, iron.
- **LABELED “T” & “F”** Glues, sprays, insecticides, acids, solvents, etc.

Products that have this symbol on the container
be taken to the ECOCENTRO.



EVEN WHEN EMPTY, have to

ECOCENTRO ADDRESS: Via Giuseppe Mazzini (near gas station) – S. PIETRO IN GU (PD)

ECOCENTRO TIMETABLE: CLOSED ON HOLIDAYS AND SEPTEMBER 8TH

From April 1st to October 31st

WEDNESDAY: 15:00 – 18:00

SATURDAY: 9:00 – 12:00 / 15:00 – 18:00

From November 1st to March 31st

WEDNESDAY: 14:00 – 17:00

SATURDAY: 9:00 – 12:00 / 14:00 – 17:00

“DOOR TO DOOR” PICK UP SCHEDULE - (2019)

Zone B

MONTH	SOLID WASTE Pick Up Day Tuesday	PAPER Pick Up Day Friday	PLASTIC/CANS Pick Up Day Friday	GLASS Pick Up Day Thursday
January	3 - 15 - 29	11 - 25	4 - 18	17
February	12 - 26	8 - 22	1 - 15	21
March	12 - 26	8 - 22	1 - 15 - 29	21
April	9 - 23	5 - 19	12 - 26	18
May	7 - 21	3 - 17 - 31	10 - 24	16
June	4 - 18	14 - 28	7 - 21	20
July	2 - 16 - 30	12 - 26	5 - 19	18
August	13 - 27	9 - 23	2 - 16 - 30	14
September	10 - 24	6 - 20	13 - 27	19
October	8 - 22	4 - 18	11 - 25	17
November	5 - 19	1 - 15 - 29	8 - 22	21
December	3 - 17 - 31	13 - 27	6 - 20	19
January 2020	14 - 28	10 - 24	3 - 17 - 31	16
February 2020	11 - 25	7 - 21	14 - 28	20

For further information please call Housing Office: DSN 637 7919/7905 or 0444 617919/617905