

# Piazzola S.B. (PD) – Zone B

## Refuse Collection

### SOLID WASTE (SECCO) - (NON-ROTTING TYPE) – (NOT RECYCLABLE ITEMS)

- Various types of plastic (excluding liquid containers)
- Rubber and Styrofoam, Non recyclable paper
- Audio/video cassettes/CDs and relative containers
- Nylon film, bags, cellophane
- Plastic plates and cutlery
- Buckets, basins and toys
- Pens and small plastic Bakelite objects
- Carbon paper, oily/laminated paper
- Nylons, Non recyclable rags, Band aid, Cloth
- Painted wooden objects, coat hangers, bags
- Small pieces of broken ceramic or porcelain
- **Diapers**, sanitary towels, cosmetics
- Dust from vacuum cleaners
- Old shoes, Light bulbs, Cigarette butts
- Small bones and seafood shells (clams, mussels)
- Cat litter and animal excrement



**GREEN**

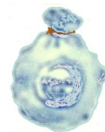
### WHERE TO PUT THEM:

Collected in plastic bags to be put in the proper **GREEN (or GREY) WHEELED CONTAINER** (that has a chip to count each emptying) to be put, **only when it's full**, on the public street nearby your dwelling unit, the evening before the day of pickup. **DIAPERS** go here, if you need to empty every week contact Housing to make a request for it. **Pick up is every two weeks on FRIDAY – See schedule**  
**Take Note!** **Place only waste that has no other disposal designation.** (See the list above)

### RECYCLABLE ITEMS

### HUMID WASTE (UMIDO) - (ORGANIC – ROTTING TYPE)

- Bad food, Egg shells
- Vegetable and fruit peelings
- Coffee grounds and tea bags
- Cut flowers and house plants
- Stale bread
- Paper tissues and dirty napkins
- Cold fireplace ashes



**BROWN**



Collect humid waste in **mater-bi (biodegradable)** bags that will be closed and placed in the proper brown **CONTAINER** (25 lts) – (given by the Municipality), that in turn will be put on the public street, nearby your dwelling unit, the evening before the day of pickup (REMEMBER to take it back).

**Pick up is twice a week on MONDAY and THURSDAY.**

**Schedule Variation:** *No Pick Up On: Apr 25<sup>th</sup>, Jun 13<sup>th</sup>, Aug 15<sup>th</sup>, Dec 26<sup>th</sup>; 2020: Jan 6<sup>th</sup>;*

**PUT ONLY THE ITEMS LISTED ABOVE AND NO OTHERS !!**

## **PLASTIC AND CANS:**

- Plastic bottles (up to 5 lts.), shopping bags
- Cans: aluminum (drinks), tuna & meat, vegetables & other foods
- Throwaway food containers (also in polystyrene material)

**Transparent  
plastic bag**



All the items, once cleaned and washed, must be collected in **transparent plastic bags only**, that must be placed on the public street, nearby your dwelling unit, the evening before the day of pickup. **Squeeze and reduce bottles.**

**Pick up is every two weeks on TUESDAY** (alternated with PAPER) – **(See SCHEDULE)**

## **GLASS (VETRO):**

- Bottles, glasses, glass vases, crystal (do not include metal or plastic cover)

**NO:** Ceramics, porcelains, light bulb or neon tubes.

All the above items must be put in the **Blue container** (given by the Municipality) and then placed on the public street, nearby your dwelling unit, the evening before the day of pickup.

**Pick up is on SATURDAY just for the first two months then on TUESDAY.**  
**(See SCHEDULE on last page)**

**BLUE BIN**



## **PAPER AND CARDBOARD (CARTA):**

- Newspapers, magazines, books, workbooks, papers (without plastic parts)
- Folded cardboards, cardboard boxes
- Tetra pack (milk, juice: empty, clean and squeezed)
- Food paper containers (without plastic parts)
- Paper dishes and glasses

**NO:** Laminated papers, oily papers, carbon papers, chemical papers.

Papers and cardboard can be put in the **Yellow container** (given by Municipality)

**OR in cardboard boxes, or tied in a package**, and must be put on the public street, nearby your dwelling unit, the evening before the day of pickup. **DON'T USE PLASTIC BAGS**

**Pickup is every two weeks on TUESDAY** (alternated with PLASTIC) - **(See SCHEDULE)**

**YELLOW  
BIN**



**NO ECOCENTRO in this area**

---

# “DOOR TO DOOR” PICK UP SCHEDULE - (2019)

## Zone B

<b>MONTH</b>	<b>PAPER</b> Pick Up Day Tuesday	<b>GLASS</b> Pick Up Day (Sat)-Thursday	<b>PLASTIC/CANS</b> Pick Up Day Tuesday	<b>DRY WASTE</b> Pick Up Day Friday
January	8 - 22	19	2 - 15 - 29	4 - 18
February	5 - 19	16	12 - 26	1 - 15
March	5 - 19	12	12 - 26	1 - 15 - 29
April	2 - 16 - 30	9	9 - 23	12 - 26
May	14 - 28	7	7 - 21	10 - 24
June	11 - 25	4	4 - 18	7 - 21
July	9 - 23	2 - 30	2 - 16 - 30	5 - 19
August	6 - 20	27	13 - 27	2 - 16 - 30
September	3 - 17	24	10 - 24	13 - 27
October	1 - 15 - 29	22	8 - 22	11 - 25
November	12 - 26	19	5 - 19	8 - 22
December	10 - 24	17	3 - 17 - 31	6 - 20
January 2020	7 - 21	14	14 - 28	3 - 17 - 31
February 2020	4 - 18	11	11 - 25	14 - 28

For further information please call Housing Office: DSN 637 7919/7905 or 0444 617919/617905