

# Nanto - Refuse Collection

## **SOLID WASTE (SECCO) - (NON-ROTTING TYPE) – (NOT RECYCLABLE ITEMS)**

- Various types of plastic (excluding liquid containers).
- Non recyclable paper. Rubber objects. Bakelite objects
- Nylon film, bags, cellophane. Plastic cutlery
- Buckets, basins and toys. Sanitary towels, cosmetics.
- Carbon paper, oily/laminated paper.
- Nylons, Non recyclable rags, Band aid, Cloth
- Painted wooden objects, coat hangers, bags
- Pens and small plastic object not containers.
- Small pieces of broken ceramic or porcelain
- Old shoes, Incandescent light bulbs, Cigarette butts
- Audio/video cassettes/CDs and relative containers
- Dust from vacuum cleaners
- **Diapers**: if the bin is full diapers can be left on the floor nearby.



**GREY**

### **WHERE TO PUT THEM:**

Collect them in the proper **GREY BUCKET** (given by the Municipality) that will be put on the public street, nearby your dwelling unit, the evening before the day of pickup.

The bucket has an electronic Chip that counts each emptying. **REMEMBER TO TAKE IT BACK!**

**Pick up is every week on MONDAY.**

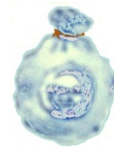
**Schedule variation:** *Mon, Apr 22<sup>nd</sup> → Wed, Apr 24<sup>th</sup>; Mon, Jan 6<sup>th</sup> 2020 → Tue, Jan 7<sup>th</sup> 2020*

Place only waste that has no other disposal designation. (See the list above)

## **RECYCLABLE ITEMS**

### **HUMID WASTE (UMIDO) - (ORGANIC – ROTTING TYPE)**

- Bad food, Egg shells
- Vegetable and fruit peelings
- Coffee grounds and tea bags
- Cat litter and animal excrement
- Cut flowers and house plants
- Stale bread
- Paper tissues and dirty napkins
- Cold fireplace ashes
- Small bones and seafood shells (clams, mussels)



**BROWN**

Humid waste must be collected in **mater-bi (biodegradable) bags** that will be kept in the house in the proper **BROWN BUCKET** (given by the Municipality), that will be put on the public street, nearby your dwelling unit, the evening before the day of pickup (**REMEMBER TO TAKE IT BACK**). The bucket has an electronic Chip that counts each emptying.

**Pick up is twice a week on TUESDAY and SATURDAY**

**Schedule variation:** *No Pick Up on: Tuesday, Jan 1<sup>st</sup>, 2019;*

**PUT ONLY THE ITEMS LISTED ABOVE AND NO OTHERS !!**

## **PLASTIC AND CANS:**

- Plastic bottles (up to 5 lts.- squeezed), shopping bags
- Cans: aluminum (drinks), tuna & meat, vegetables & other foods
- Throwaway food containers (also in Styrofoam material)
- Metal or plastic empty toothpaste tubes



All the items, once cleaned and washed, must be collected in a **transparent plastic bag only** to be put on the public street, nearby your dwelling unit, the evening before the day of pickup. **Squeeze and reduce bottles.**

**Pick up is every TWO weeks on THURSDAY.** (Alternate with PAPER) - (See SCHEDULE)

**Schedule Variation:** *Thursday, Apr 25<sup>th</sup> → Friday, Apr 26<sup>th</sup>;*

If is needed it can be taken to the ECOCENTRO.

## **GLASS (VETRO):**

- Bottles, glass vases, crystal, glass containers (clean & without metal or plastic cover)

**NO:** Ceramics, porcelains, light bulb or neon tubes, mirrors.

All the above items must be put in the proper **GREEN BIN** (given by the Municipality – with electronic Chip to count the emptying) that you will put out on the public street, nearby your dwelling unit, the evening before the day of pickup.

**Pick up is every TWO weeks on SATURDAY.**

If is needed it can be taken to the ECOCENTRO.



**GREEN**

## **PAPER AND CARDBOARD (CARTA):**

- Newspapers, magazines, books, workbooks, papers (without plastic parts)
- Folded cardboards, cardboard boxes
- Tetra pack (milk, juice: empty, clean and squeezed)
- Food paper (without plastic parts)



**NO:** Plasticized papers, oily papers, carbon papers, chemical papers, wallpapers.

Papers and cardboard must be packed and tied or placed in cardboard boxes to be thrown away, that must be put on the public street, nearby your dwelling unit, the evening before the day of pickup.

**Pick up is every TWO weeks on THURSDAY.** (Alternate with PLASTIC) - (See SCHEDULE)

**Schedule Variation:** *Thursday, Dec 26<sup>th</sup> → Friday, Dec 27<sup>th</sup>;*

**DON'T USE PLASTIC BAGS** – If is needed it can be taken to the ECOCENTRO.

## **WHEN AND WHAT TO BRING TO ECOCENTRO:**

- GREEN & BRANCHES: Branches, leaves, plants (without ground), vegetal residues
- OILS: Vegetable oils (cooking) and mineral (engine)
- RAEE: Wastes from electric/electronic house equipment or appliances
- R.U.P. Dangerous refuses, batteries, car batteries, expired medicines
- DURABLE GOODS: Refrigerators, dishwashers, washers, TV, computers, printers.
- WOOD: Wooden parts from: constructions, furniture, packing.
- Bulky RSI Mattresses, mirrors, various bulky packages, sofa, easy chairs, etc.
- OTHERS: Old shoes, clothing, window glass, iron.

- LABELED “T” & “F”      Glues, sprays, insecticides, acids, solvents, etc.

Products that have this symbol on the container  
be taken to the ECOCENTRO.



**EVEN WHEN EMPTY**, have to

**ECOCENTRO ADDRESS:**    Via Ca’ Silvestre – PONTE DI NANTO (VI)

**ECOCENTRO TIMETABLE:**    **CARD NEEDED**

**Closed on Holidays**

	<b>March 31 to October 26</b>	<b>October 27 to March 30</b>
<b>MONDAY-WEDNESDAY</b>	<b>16:00 – 19:00</b>	<b>15:00 – 18:00</b>
<b>THURSDAY:</b>	<b>9:00 – 12:00</b>	<b>9:00 – 12:00</b>
<b>SATURDAY:</b>	<b>9:00 – 12:00 / 15:00 – 19:00</b>	<b>9:00 – 12:00 / 14:00 – 18:00</b>

## “DOOR TO DOOR” PICK UP SCHEDULE - (2019)

<b>MONTH</b>	<b>GLASS Pick Up Day Saturday</b>	<b>PAPER Pick Up Day Thursday</b>	<b>PLASTIC/CANS Pick Up Day Thursday</b>
<b>January</b>	<b>5 - 19</b>	<b>10 - 24</b>	<b>3 - 17 - 31</b>
<b>February</b>	<b>2 - 16</b>	<b>7 - 21</b>	<b>14 - 28</b>
<b>March</b>	<b>2 - 16 - 30</b>	<b>7 - 21</b>	<b>14 - 28</b>
<b>April</b>	<b>13 - 27</b>	<b>4 - 18</b>	<b>11 - 26</b>
<b>May</b>	<b>11 - 25</b>	<b>2 - 16 - 30</b>	<b>9 - 23</b>
<b>June</b>	<b>8 - 22</b>	<b>13 - 27</b>	<b>6 - 20</b>
<b>July</b>	<b>6 - 20</b>	<b>11 - 25</b>	<b>4 - 18</b>
<b>August</b>	<b>3 - 17 - 31</b>	<b>8 - 22</b>	<b>1 - 16 - 29</b>
<b>September</b>	<b>14 - 28</b>	<b>5 - 19</b>	<b>12 - 26</b>
<b>October</b>	<b>12 - 26</b>	<b>3 - 17 - 31</b>	<b>10 - 24</b>
<b>November</b>	<b>9 - 23</b>	<b>14 - 28</b>	<b>7 - 21</b>
<b>December</b>	<b>7 - 21</b>	<b>12 - 27</b>	<b>5 - 19</b>
<b>January 2020</b>	<b>4 - 18</b>	<b>9 - 23</b>	<b>2 - 16 - 30</b>

For further information please call Housing Office: DSN 637 7919/7905 or 0444 617919/617905