

# Gazzo P. (PD) – Zone B – Ref. Collection

## **SOLID WASTE (SECCO) - (NON-ROTTING TYPE) – (NOT RECYCLABLE ITEMS)**

- Various types of plastic (excluding liquid containers)
- Rubber and Styrofoam, Non recyclable paper
- Audio/video cassettes/CDs and relative containers
- Nylon film, bags, cellophane
- Plastic plates and cutlery
- Buckets, basins and toys
- Pens and small plastic Bakelite objects
- Carbon paper, oily/laminated paper
- Nylons, Non recyclable rags, Band aid, Cloth
- Painted wooden objects, coat hangers, bags
- Small pieces of broken ceramic or porcelain
- Diapers, sanitary towels, cosmetics
- Dust from vacuum cleaners
- Old shoes, Light bulbs, Cigarette butts

**GREY  
BIN**



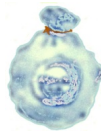
### **WHERE TO PUT THEM:**

Collected in plastic bags to be put in the proper **GREY WHEELED CONTAINER** (that has a chip to count each emptying) to be put, **only when it's full**, on the public street nearby your dwelling unit, the evening before the day of next pickup. **Pick up is every two weeks on SATURDAY – See schedule**  
**Take Note! Place only waste that has no other disposal designation.** (See the list above)

## **RECYCLABLE ITEMS**

### **HUMID WASTE (UMIDO) - (ORGANIC – ROTTING TYPE)**

- Bad food, Egg shells
- Vegetable and fruit peelings
- Coffee grounds and tea bags
- Cat litter and animal excrement
- Cut flowers and house plants
- Stale bread
- Paper tissues and dirty napkins
- Cold fireplace ashes
- Small bones and seafood shells (clams, mussels)



**BROWN**



Collect humid waste in **mater-bi (biodegradable)** bags that will be closed and placed in the proper brown **CONTAINER** (25 lbs) – (given by the Municipality), that in turn will be put on the public street, nearby your dwelling unit, the evening before the day of pickup (REMEMBER to take it back).

**Pick up is twice a week on MONDAY and FRIDAY.**

**Schedule Variation:** *No Pick Up on: April 22<sup>nd</sup>, November 1<sup>st</sup>; 2020, January 6<sup>th</sup>;*

**PUT ONLY THE ITEMS LISTED ABOVE AND NO OTHERS !!**

## PLASTIC AND CANS:

- Plastic bottles (up to 5 lts.), shopping bags
- Cans: aluminum (drinks), tuna & meat, vegetables & other foods
- Throwaway food containers (also in polystyrene material)

Transparent  
plastic bag



All the items, once cleaned and washed, must be collected in **transparent plastic bags only**, that must be placed on the public street, nearby your dwelling unit, the evening before the day of pickup. **Squeeze and reduce bottles.**

**Pick up is every two weeks on FRIDAY** (alternated with PAPER) – (**See SCHEDULE**)

## GLASS (VETRO):

- Bottles, glasses, glass vases, crystal (do not include metal or plastic cover)

**NO:** Ceramics, porcelains, light bulb or neon tubes.

All the above items must be put in the **Blue container** (given by the Municipality) and then placed on the public street, nearby your dwelling unit, the evening before the day of pickup.

**Pick up is every 1<sup>st</sup> WEDNESDAY of the month.**  
(See SCHEDULE on last page)

BLUE BIN



## PAPER AND CARDBOARD (CARTA):

- Newspapers, magazines, books, workbooks, papers (without plastic parts)
- Folded cardboards, cardboard boxes
- Tetra pack (milk, juice: empty, clean and squeezed)
- Food paper (without plastic parts)

**NO:** Laminated papers, oily papers, carbon papers, chemical papers.

Papers and cardboard must be put in the **Yellow container** (given by Municipality) that must be put on the public street, nearby your dwelling unit, the evening before the day of pickup. **DON'T USE PLASTIC BAGS**

**Pickup is every two weeks on FRIDAY** (alternated with PLASTIC) - (**See SCHEDULE**)

YELLOW  
BIN



## WHAT TO BRING TO ECOCENTRO (CENTRO DI RACCOLTA):

- GREEN & BRANCHES: Branches, leaves, plants (without ground), vegetal residues
- WOOD: Wooden parts only from: constructions, furniture, packing.
- OILS: Vegetable oils (cooking)
- RAEE: Wastes from electric/electronic house equipments or appliances
- R.U.P. Dangerous refuses, batteries, car batteries, expired medicines
- Bulky RSI Mattresses, mirrors, various bulky packages, sofa, easy chairs, etc.
- DURABLE GOODS: Refrigerators, dishwashers, washers, TV, computers, printers.
- OTHERS: Old shoes, clothing, car tires, glass, iron.
- LABELED "T" & "F" Glues, sprays, insecticides, acids, solvents, etc.

Products that have this symbol on the container  
be taken to the ECOCENTRO.



**EVEN WHEN EMPTY**, have to

**ECOCENTRO ADDRESS:** Via dell'Industria – VILLALTA di GAZZO P.NO

**ECOCENTRO TIMETABLE:** - ECO CARD is needed.

**From April 1<sup>st</sup> to October 31<sup>st</sup>**

**SATURDAY: 10:00 – 12:00 / 16:00 – 18:30**

**From November 1<sup>st</sup> to March 31<sup>st</sup>**

**SATURDAY: 10:00 – 12:30 / 13:30 – 16:00**

---

**“DOOR TO DOOR” PICK UP SCHEDULE - (2019)**  
**Zone B**

| <b>MONTH</b> | <b>PAPER<br/>Pick Up Day<br/>Friday</b> | <b>GLASS<br/>Pick Up Day<br/>Wednesday</b> | <b>PLASTIC/CANS<br/>Pick Up Day<br/>Friday</b> | <b>DRY WASTE<br/>Pick Up Day<br/>Saturday</b> |
|--------------|-----------------------------------------|--------------------------------------------|------------------------------------------------|-----------------------------------------------|
| January      | 4 - 18                                  | 2                                          | 11 - 25                                        | 12 - 26                                       |
| February     | 1 - 15                                  | 6                                          | 8 - 22                                         | 9 - 23                                        |
| March        | 1 - 15 - 29                             | 6                                          | 8 - 22                                         | 9 - 23                                        |
| April        | 12 - 26                                 | 3                                          | 5 - 19                                         | 6 - 20                                        |
| May          | 10 - 24                                 | 1                                          | 3 - 17 - 31                                    | 4 - 18                                        |
| June         | 7 - 21                                  | 5                                          | 14 - 28                                        | 1 - 15 - 29                                   |
| July         | 5 - 19                                  | 3                                          | 12 - 26                                        | 13 - 27                                       |
| August       | 2 - 16 - 30                             | 7                                          | 9 - 23                                         | 10 - 24                                       |
| September    | 13 - 27                                 | 4                                          | 6 - 20                                         | 7 - 21                                        |
| October      | 11 - 25                                 | 2                                          | 4 - 18                                         | 5 - 19                                        |
| November     | 8 - 22                                  | 6                                          | 1 - 15 - 29                                    | 2 - 16 - 30                                   |
| December     | 6 - 20                                  | 4                                          | 13 - 27                                        | 14 - 28                                       |
| January 2020 | 3 - 17                                  | 14                                         | 10 - 24                                        | 11 - 25                                       |

*For further information please call Housing Office:* DSN 637 7919/7905 or 0444 617919/617905