



# Army Training Land Retention at Kahuku Training Area, Kawaihoa-Poamoho Training Area, and Makua Military Reservation, Island of O'ahu

## FACT SHEET

### ENVIRONMENTAL IMPACT STATEMENT

The Army is preparing an Environmental Impact Statement (EIS) for Army Training Land Retention of State Lands at Kahuku Training Area (KTA), Kawaihoa-Poamoho Training Area (Poamoho), and Makua Military Reservation (MMR) on the island of O'ahu. The Army proposes to retain up to approximately 6,300 acres of State-owned lands at KTA, Poamoho, and MMR to support continued military training.

The Council on Environmental Quality provides guidance for the EIS process under the implementing regulations of the National Environmental Policy Act (NEPA) in Title 40 Code of Federal Regulations (CFR) Parts 1500–1508 and the Army NEPA Regulations in Title 32 CFR Part 651. This EIS will also comply with Hawai'i Revised Statutes Chapter 343 and Hawai'i Administrative Rules Chapter 11-200.1 - collectively, referred to as the Hawai'i Environmental Policy Act (HEPA). Like NEPA, HEPA ensures environmental concerns are given appropriate consideration in decision making, along with economic and technical considerations.

One of the first steps in the NEPA and HEPA processes is to notify the public of the intention to prepare an EIS. This occurs through a Notice of Intent (NOI) in the Federal Register, and publication of an EIS Preparation Notice (EISPN) in the State of Hawai'i's Office of Environmental Quality Control's (OEQC) semi-monthly publication, The Environmental Notice.

### BACKGROUND

KTA, Poamoho, and MMR are comprised of approximately 18,060 acres of U.S. Government and State-owned lands on the island of O'ahu. The Army's authority to use the State-owned lands is through leases which were initiated in 1964 to support mission-critical training capabilities, training facilities, operations, access, and other essential military training and logistics services. Much of the leased lands supplement U.S. Government-owned training land by providing maneuver area and key training features that complement larger activities that take place on U.S. Government-owned lands. The leased lands provide unique military training environments not available elsewhere on military installations in Hawai'i. Other portions of the leased lands allow for access within and between U.S. Government-owned training lands, access to public rights-of-way, or buffer zones between Army and non-Army land uses.

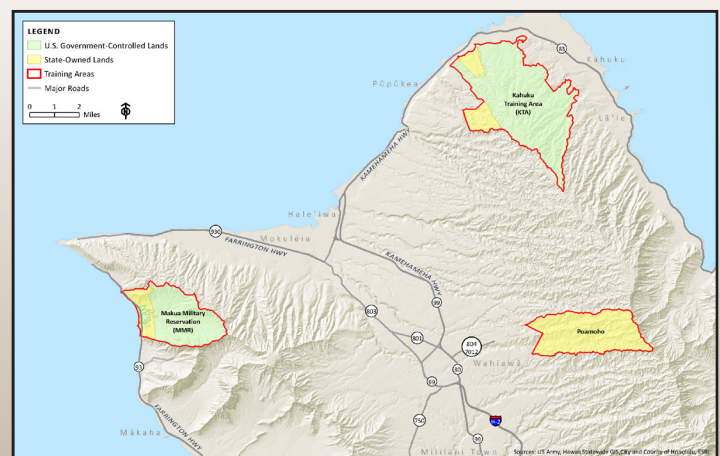
The U.S. Government leases approximately 6,300 acres of these lands from the State consisting of portions of KTA and MMR, and all of Poamoho. The 65-year leases of the State-owned lands expire in 2029. Loss of these lands would greatly impact the Army's and other military services' ability to train in Hawai'i and prepare for mission readiness, because these areas include important facilities and infrastructure for ground maneuver and aviation training.

### PROPOSED ACTION AND ALTERNATIVES

The EIS will evaluate the reasonably foreseeable impacts of a range of alternatives that meet the purpose and need of the Proposed Action. The Proposed Action is the retention of State-owned lands to allow the military to continue to meet current and future training and combat readiness requirements. Alternatives considered in the EIS include Full Retention, Modified Retention, Minimum Retention and Access, and No Action. The Proposed Action does not involve new training, construction, or resource management activities.

- Under Full Retention the Army would retain all State-owned lands within each training area.
- Under Modified Retention the Army would retain all State-owned land within each training area except lands on which limited training occurs.
- Under Minimum Retention and Access, the Army would retain the minimum amount of State-lands within each training area that is required for the Army in Hawai'i to continue to meet its current ongoing training requirements. This includes State-owned lands with the most vital training/support facilities, infrastructure, maneuver land, U.S. Government-owned utilities, and access to these features. Other reasonable alternatives meeting the Army's mission raised during the scoping process and capable of meeting the Army mission, project purpose, and need will also be considered for evaluation in the EIS.
- Under No Action, the leases would expire in 2029 and leased lands would not be retained.

The EIS will analyze live-fire training at MMR at a programmatic level. If the Army proposes a resumption of live-fire at MMR, it would also be subject to further separate and more detailed NEPA analysis.



Location Map



# Army Training Land Retention at Kahuku Training Area, Kailua-Poamoho Training Area, and Makua Military Reservation, Island of O'ahu

## FACT SHEET

### NEPA/HEPA PUBLIC PARTICIPATION PROCESS

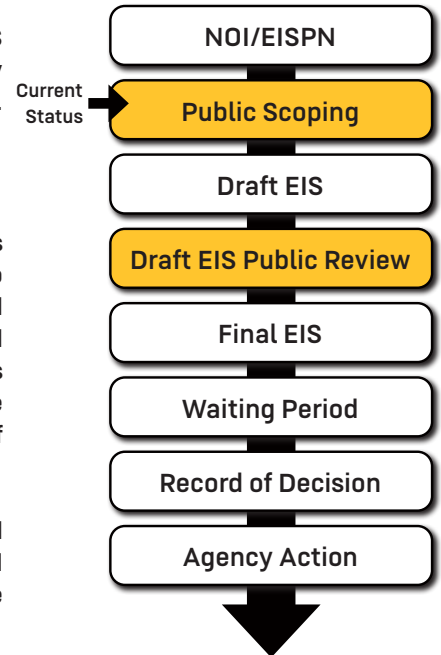
The NEPA/HEPA timeline (to the right) shows opportunities for public input in gold. The EIS is currently in the Public Scoping period—during which the public provides comments on key issues of concern and potential impacts to be considered in the development of the Draft EIS.

### PUBLIC SCOPING PROCESS

The intent of the scoping process is to reach out early and engage a broad range of stakeholders with the purpose of informing and eliciting input. The public scoping process will help to identify reasonable alternatives, potential impacts, and key issues of concern to be evaluated in the EIS, as well as determine which stakeholders (e.g., individuals, organizations, and government agencies) are interested in commenting on the Draft EIS. Scoping serves as an opportunity to obtain input from the community regarding issues and resources to be addressed or analyzed through the EIS process. In this regard, it helps to define the scope of issues and analyses that should be addressed in the EIS.

The public scoping process began with the publication of the NOI in the Federal Register and publication of the EISPN in State of Hawaii's The Environmental Notice. Federal, State, and local agencies; Native Hawaiian organizations; and the public are invited to participate in the scoping process. The 40-day public scoping period ends on September 1, 2021.

### NEPA/HEPA STEPS



### PUBLIC SCOPING OPEN HOUSE

Due to COVID-19 restrictions, this will not be a traditional Open House event, but instead will consist of two hybrid in-person/online public scoping sessions to allow the most public input by the safest means during the allotted time.

- View online presentations and project documents at:  
<https://home.army.mil/hawaii/index.php/OahuEIS>

Attend one of the public scoping sessions on  
August 10 and 11, 2021, 6 - 9 p.m.

- In person:  
Leilehua Golf Course  
199 Leilehua Golf Course Rd.,  
Wahiawa, HI 96786
- Online: View and/or listen  
via live stream, at:  
<https://home.army.mil/hawaii/index.php/OahuEIS>



Scan with smartphone to be  
directed to the O'ahu EIS website.

### HOW TO SUBMIT WRITTEN COMMENTS

Comment Period is  
July 23 - September 1, 2021

- In person: Attend a public scoping session. Detailed information available at: <https://home.army.mil/hawaii/index.php/OahuEIS>
- Online: through website (above) or QR code (to the left)
- Via email: [usarmy.hawaii.nepa@mail.mil](mailto:usarmy.hawaii.nepa@mail.mil)
- Via U.S. mail: O'ahu ATLR EIS Comments  
P.O. Box 3444  
Honolulu, HI  
96801-3444

### FOR MORE INFORMATION OR ACCESSIBILITY REQUESTS

U.S. Army Garrison Hawaii Public Affairs Office  
Email: [usarmy.hawaii.comrel@mail.mil](mailto:usarmy.hawaii.comrel@mail.mil) Phone: (808) 656-3158

*Note: Comment submittal through the online form is preferred. However, all comments will be valued equally, regardless of how they are submitted. Please do not submit duplicate comments. Comments should be written clearly, as commenters will not be contacted to provide clarification. Personal contact information will be maintained for the record and will not be released unless required by law.*

### HOW TO SUBMIT ORAL COMMENTS

(only available on August 10 and 11)

- In person: Attend a public scoping session
- Via phone: Call (808) 556-8277 to provide oral comments from 4 - 9 p.m.