



DEPARTMENT OF THE ARMY
U.S. ARMY INSTALLATION MANAGEMENT COMMAND-PACIFIC
HEADQUARTERS, UNITED STATES ARMY GARRISON, HAWAII
745 WRIGHT AVENUE, BUILDING 107, WHEELER ARMY AIRFIELD
SCHOFIELD BARRACKS, HAWAII 96857-5000

AMIM-HWP-E (400b)

MEMORANDUM FOR All Military Personnel, Family Members, Department of Defense (DoD) Civilian Personnel, DoD Contractors, and Visitors that Generate Green Waste on United States Army Garrison, Hawaii (USAG-HI) Installations

SUBJECT: Policy Memorandum USAG-HI 50, Green Waste Policy

1. References.

- a. Coconut Rhinoceros Beetle Response Green Waste Management Guidelines.
- b. Hawaii Department of Agriculture Plant Quarantine Interim Rule 22-1.
- c. Compliance Agreement to Prevent the Spread of Coconut Rhinoceros Beetle in Hawaii.
- d. Department of the Navy, Joint Base Pearl Harbor-Hickam Greenwaste Policy, 29 Oct 18.
- e. U.S. Army Garrison Hawaii – Environmental Compliance Guide, Green Waste (Yard Waste).

2. Purpose. To establish local policy and procedures governing handling, transport, and disposal of green waste on USAG-HI installations. Green waste is suitable host material for an invasive pest, coconut rhinoceros beetle (CRB), *Oryctes rhinoceros*, which has been detected on USAG-HI installations and elsewhere on Oahu. Measures are provided to minimize the spread of CRB throughout USAG-HI land on Oahu and to Hawaii Island.

3. Applicability. This policy applies to all Military Personnel, Family Members, DoD Civilian Personnel, DoD Contractors, and others who work on, reside on, or visit any US Army installations, facilities, or work sites on Oahu.

4. Definitions.

- a. Green Waste: Green waste includes any plant material that has been trimmed, cut, uprooted, or fallen such as logs, stumps, branches, leaves, palm fronds, plants, grass clippings, and trimmings.

b. CRB Host Material: Includes green waste as defined above; entire dead trees; fruit and vegetative scraps; mulch; compost; and live palms from the genera *Washingtonia*, *Livistona*, *Pritchardia*, *Cocos*, *Phoenix*, and *Roystonea*.

5. Policy.

a. Hawaii Department of Agriculture Plant Quarantine Interim Rule 21-1.

(1) Hawaii Department of Agriculture (HDOA) approved the Plant Quarantine Interim Rule 21-1 on 01 July 2022. The rule prohibits intra- and inter-island movement of CRB host material within the island of Oahu, to and from the Island of Oahu, and other areas known to be infested with CRB to un-infested islands in the state except by a compliance agreement issued by HDOA. If any life stage of CRB or suspected CRB is found, stop green waste clearing and call the HDOA CRB Response at 808-679-5244.

b. General.

(1) Removal and trimming of trees and shrubs can generate substantial amounts of green waste. Green waste provides suitable habitat for CRB. Anyone who conducts work that generates green waste must follow the handling, transportation, and disposal guidelines provided.

(2) Deliver green waste whole, trimmed, or processed/chipped to the Army Recycling Center (ARC). The ARC is located 1087 McMahan Road, Schofield Barracks, (808) 656-9911. No pick-up service is available for green waste. Green waste will be loaded into a rolloff and hauled to Hawaiian Earth Products for processing.

(3) The ARC requires all branches and stumps be cut into 4-foot lengths or smaller.

(4) Green waste generated by Hale Koa Hotel and Fort DeRussy must be delivered to their landscaping yard to be loaded into the appropriate dumpster. The dumpster will be picked up by Honolulu Disposal Service, or other compliant servicer, and taken directly to Hawaiian Earth Products twice a week.

(5) Do not stockpile green waste or allow it to accumulate for more than 30 days after removal from a living plant.

(6) Because organic mulch applied at any thickness can support CRB breeding, CRB-safe materials shall be used in landscaping. Weed mat, cinders, stone, gravel, rubber chips, reclaimed asphalt, and similar inorganic materials are recommended for weed control and moisture retention, and commercial fertilizers are recommended for adding nutrients to soil.

(7) If green waste material is intended for storage, the material must be subjected to a treatment that eradicates all life stages of CRB immediately before storage. The material must also be stored within a container that is impenetrable by CRB adults (e.g., tarps are not approved for storage) and completely sealed overnight, from sunset to sunrise, when CRB are most active.

(8) If green waste material has been stored or staged without being treated and sealed as described above, and it needs to be transported for disposal, it must either be treated to eradicate all life stages of CRB prior to transport or it must be taken to Hawaiian Earth Products for treatment and disposal. Infested material must be completely enclosed to prevent spills during transport. Notification to CRB Response and Hawaiian Earth Products must occur prior to transporting infested or potentially infested material.

(9) Do not dispose of green waste into or next to trash dumpsters.

(10) Contracts involving green waste production, transport, or removal of any kind must designate waste be taken to Hawaiian Earth Products the same day it is removed from the installation.

(11) All CRB host material shall be completely enclosed or covered with a tarp during transport to avoid any loss of CRB Host Material.

(12) If for any reason Hawaiian Earth Products will not accept green waste material (e.g., it is mixed with rocks, excess soil, or rubbish), then it must be taken to another approved processing facility, such as H-Power for incineration.

(13) After unloading of all CRB host material, the container and/or vehicle used to contain transported material must have all remaining debris removed by sweeping or blowing. Containers/vehicles must be visually inspected for CRB prior to departure from the compliant receiving or processing facility (e.g., the ARC or Hawaiian Earth Products).

(14) Because host palms may harbor CRB, if any host palms will be transported they should be inspected within 48 hours of transport. If the palm shows signs of CRB damage or if any life stage of CRB is detected (see Enclosure), do not move the palm.

(15) The inspection must include the root zone, soil or potting medium, trunk, and crown.

(16) If CRB and/or damage from CRB are detected, call the HDOA CRB Response Office at 808-679-5244.

AMIM-HWP-E (400b)

SUBJECT: Policy Memorandum USAG-HI 50, Green Waste Management Policy

6. If any life stage of CRB or suspected CRB is found, stop green waste clearing and call the HDOA CRB Response at 808-679-5244.

7. This policy is effective immediately and remains in effect until rescinded or superseded in writing.

8. Point of contact for this policy memorandum is the USAG-HI Integrated Pest Management Coordinator, Environmental Division, Directorate of Public Works, at (808) 655-9181.

Encl
Guide to Compliance

STEVEN B. MCGUNEGLE
COL, AR
Commanding

DISTRIBUTION
Electronic Media

GUIDE TO COMPLIANCE COCONUT RHINOCEROS BEETLE (CRB) INTERIM RULE



REGULATED: CRB HOST MATERIAL



CRB breed in rotting plant material from any plant.

CRB Host Material includes: Entire dead trees, Mulch, trimmings, fruit and vegetative scraps and decaying stumps, and Compost, including bagged compost originating on O'ahu.

OPTIONS FOR TRANSPORT

1) FRESH

Material can be moved within 30 days of removal from a live plant.



2) TREATED

Treated material can move within 48 hours of treatment. Options for treatment are:



Heat treated: core temperature 131 degrees F



Chipping or grinding: all material is run through a chipper or grinder



Fumigation: material is fumigated with sulfuryl fluoride to 2000 CT

3) SECURE

Material may be moved if it is sealed overnight, every night in a CRB-safe container and it was CRB-free when loaded.



4) DIRECT TO PROCESSING SITE

Material may be taken directly to a certified processing facility where it will be ground within 72 hours of transport and heat treated to 131 degrees F.



REGULATED: CRB HOST PALMS

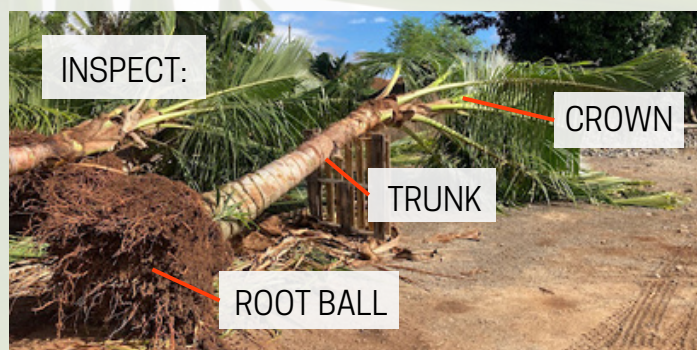


CRB can feed on other plants like hala, sugarcane, pineapple, and banana, but only coconut, fan, date, and royal palms are regulated by the Interim Rule.

CRB Host Palms are: Live palm plants in the following genera: Washingtonia, Livistona, and Pritchardia, and Cocos, Phoenix, and Roystonea.

INSPECT BEFORE TRANSPORT

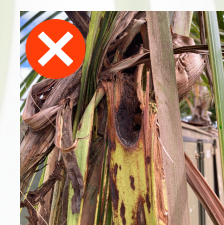
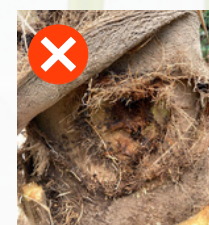
All palms being moved off property on O'ahu must be self-inspected by staff. Stage the palm so that the root ball, trunk, and crown may be examined.



ROOT BALL: Inspect material, do not move if CRB are found. If potted, submerge the pot for 1 hour and collect and report any CRB found.

TRUNK: Inspect any holes and do not move if any rotting material is found.

CROWN: Inspect the entire crown and look closely at the spear. If the palm has signs of feeding on the spear, it cannot be moved. Report any tree damage, whether or not palm will be moved.



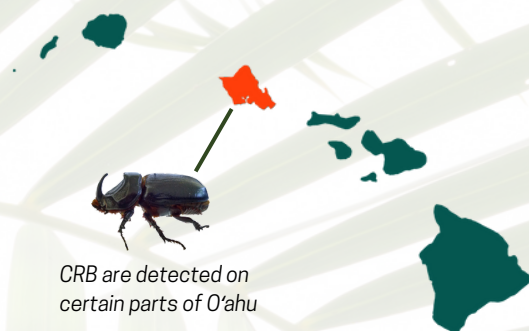
All interisland Transport of CRB Host Material must be inspected by HDOA staff.

GUIDE TO COMPLIANCE COCONUT RHINOCEROS BEETLE (CRB) INTERIM RULE



INTERIM RULE

On July 1, 2022 the Hawai'i Department of Agriculture (HDOA) approved Plant Quarantine Interim Rule 22-1, which designates **O'ahu as a Quarantine Area** and restricts the movement of **CRB host material** on O'ahu and to and from O'ahu.



CRB are detected on certain parts of O'ahu



If you are moving CRB Host Material to a different property, you must safeguard the material.

REQUIREMENTS FOR WORK WITH THIS MATERIAL:

ALLOW ACCESS: Allow the CRB Response to install traps, survey CRB Host Material, and inspect vehicles and equipment.



CRB traps



Canine survey



Tree damage survey

SELF-INSPECT:



Any CRB Host Material must be surveyed every 6 months (full turnover or spot check).

REPORT:

Coconut rhinoceros beetle:

Collect all CRB in a glass or hard plastic container and send a photo to the CRB Response at **808-679-5244**.



CRB eggs (2 -3 mm)



Final larval stage (3.5 - 4 ")



Pupa (2")



Adult (2")

Tree damage:



Look for boreholes in the crowns of trees or fronds with 45 degree, v-shaped cuts. Leaflets will have scalloped edges. Document and report signs of CRB damage, and inspect any palms before moving them.



This guide is designed as an explanatory document for businesses in training to obtain a Compliance Agreement required by HDOA Interim Rule 22-1. Reference the full Compliance Agreement document at crbhawaii.org/compliance for complete information.

Contact: CRB Response

crbhawaii.org | 808-679-5244 (call/text) | info@crbhawaii.org