



# COMMUNITY INFORMATION EXCHANGE

U.S. ARMY GARRISON HAWAII

JULY 24, 2025



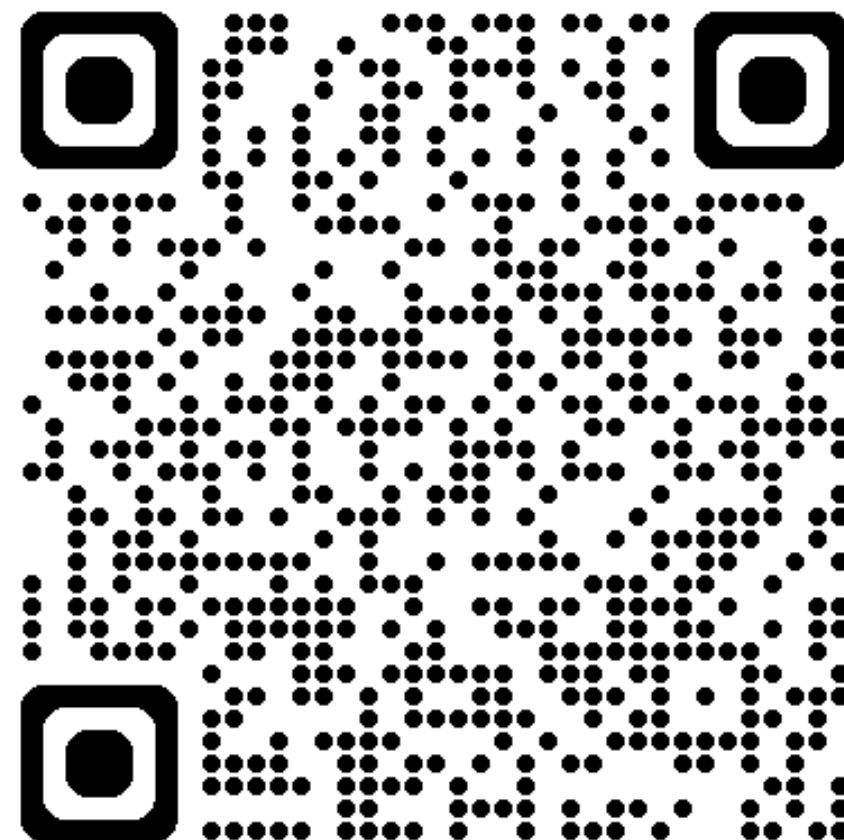


# AGENDA

- ❖ Opening Remarks
- ❖ Traffic Signal Timing Pilot Program
- ❖ School Information
  - ❖ School Zone Safety
  - ❖ Back to School
  - ❖ Registration
  - ❖ Immunization
  - ❖ Bus Service Overview
- ❖ Family Advocacy Program - Community Needs Assessment
- ❖ Bulk Item Disposal
- ❖ Upcoming HECO Power Outages
- ❖ EV Charging
- ❖ City & County Alert Messaging
- ❖ Community Events
- ❖ JPMRC Preview
- ❖ Closing Remarks



Scan QR for the latest Slide Brief





# Directorate of Emergency Services

## Traffic Signal Timing Pilot Program – SB



### Location:

- Wilikina Dr. & McCornack Rd. (outside McNair ACP)

### When:

- July 29 – August 11, 2025 (**Daily, 1430-1830**)

### What's Changing:

- Left-turn signal from McCornack Rd. to Wilikina Dr. **reduced from 50 sec to 30 sec**

### Why:

- **County pilot program to improve traffic flow**

### Impact:

- Possible longer wait times for left turns
- Consider alternate exits
- Macomb ACP open for egress: 1600-1800 (Mon-Fri)

McCornack Rd. to Wilikina Dr.



Wilikina Dr.



McNair



Macomb




# Directorate of Emergency Services (DES)

## Bicycle Safety/E-Bike Safety




Bike Safety

-  Helmets are MANDATORY
- ☐ Must have headlight if riding during limited visibility
- ☐ Must have a red reflector mounted on rear of bike
- ☐ Must have a reflector mounted on each side of the bike
- ☐ Reflective body-wear gear is recommended
- ☐ Bicyclists using roadway have all the rights/duties applicable to the driver of a motor vehicle and must follow same rules/laws
- ☐ Carry one rider only
- ☐ Ride single file and far right of lane
- ☐ All bicycles with 20-inch wheels or greater diameter are required to be registered on Oahu (\$15.00)



E-Bike Rules

- ☐ Hawaii electric bicycle law: An E-bike is a low-speed electric bicycle whose assisted maximum speed on a paved level surface, when powered solely by its motor, is less than 20 mph
- ☐ MUST BE 15 YEARS OR OLDER to legally operate
-  Helmets are MANDATORY
- ☐ Must have headlight if riding during limited visibility
- ☐ Must have a red reflector mounted on rear of bike
- ☐ Must have a reflector mounted on each side of the bike
- ☐ Reflective body-wear gear is recommended
- ☐ Bicyclists using roadway have all the rights/duties applicable to the driver of a motor vehicle and must follow same rules/laws
- ☐ Carry one rider only
- ☐ Ride single file and far right of lane
- ☐ All E-bikes are required to be registered on Oahu (\$30.00) MUST BE 18 YEARS OLD to register

**Properly fitted helmet is *most important piece of safety gear* IAW The National Safety Counsel**



# Directorate of Emergency Services (DES)

## Crossing Guard Safety



- ✓ Be attentive and heed crossing guard instructions
- ✓ Be patient
- ✓ Use sidewalks where available
- ✓ Use crosswalks where available
- ✓ Please teach children to pay attention
- ✓ Please teach children rules for crossing roadways/crosswalks
- ✓ Ensure children are **VISIB<sup>LE</sup>**





# (DFMWR) Back to School (4/5 August 2025)

**\* TB Screenings are done at  
Immunization Clinic as walk-in**

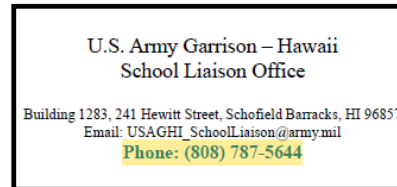
## Registration (SLO)

- \* Student's original birth certificate
- \* Valid government-issued photo ID of biological parent/guardian
- \* Report card or records from the previous school
  - If they were not released, provide contact info for the previous school and Hawaii will request these documents
- \* Medical records, including:
  - Up-to-date shot records for your child's age
  - Physical examination by a licensed physician within 12 months of date enrolling for school.
- \* A tuberculosis (TB) clearance completed in a U.S. facility.
  - Students arriving from overseas should wait until they arrive in Hawaii to get the assessment done.
- \* Proof of residency (housing papers, hotel contract or invoice, utility bill, etc.).
- \* Special needs students should provide an IEP or 504 and all prior assessments and/or evaluations. Gifted and Talented students should bring in all prior documentation. Schools may perform their own evaluation of your child for placement.

**Department of Education Website: [hawaiipublicschools.org](https://hawaiipublicschools.org)**



**Hawaii School Information Handbook  
2025-2026**



**Contact the School Liaison Office  
at 808-787-5644 to request a copy  
of the handbook**

## Immunizations

<https://hawaiipublicschools.org/enrolling-in-school/student-health-immunization-requirements/>

- \* Required immunizations depend on the age and /or grade of the student and all immunizations must meet minimum age and minimum interval requirements.
- \* Students may be exempt from immunization requirements for medical or religious reasons, if appropriate documentation is presented to the school. Medical exemptions must be obtained from your child's healthcare provider. No other exemptions are allowed by the state.
- \* Call the Hawaii Department of Health Immunization Branch at **808-586-8300** for more information.

Note: a student who does not have documentation of all the required immunizations or a physical examination may be allowed provisional entry with verification of an upcoming medical appointment. **Only the TB clearance is mandatory for initial attendance.**



# (DFMWR)

## Hawaii DOE Bus Service Overview:

- *Response from DOE Transportation Office about bus driver shortage and route info*
- *Extra space for response*
- Grades K-5 must reside 1 mile or more from school
- Grades 6-12 must reside more than 1.5 miles from school
- Special needs students with transportation services as part of their Individualized Education Plan (IEP) are eligible for transportation; consult the Student Services Coordinator.
- Students on a Geographical Exception are not eligible for bus service
- Students eligible for free lunch receive free bus service
- Applications must be submitted on a quarterly basis. Applications are processed in order received. Prior service does not guarantee placement for the following quarter; students must re-apply each quarter.

**Quarter 1:** July 14, 2025 – August 15, 2025

**Quarter 2:** September 22, 2025 – October 17, 2025

**Quarter 3:** December 12, 2025 – January 9, 2026

**Quarter 4:** March 2, 2026 – March 27, 2026

- Paper applications are available in school offices or online at:  
<https://hawaiipublicschools.org/school-services/eligibility-applying/>
- One way: \$36, Round trip: \$72 - cash, money order, cashier's check, or online at ezschooldpay.com. No checks allowed.



Contact the Central District - Student Transportation Office at 808-784-5217 with questions or concerns



# (DFMWR)

## Bus Driver Shortage Update:

### Leilehua, Mililani, and Waialua Complex:

- \* Requires 35 drivers, 17 positions filled
- \* 10 of the 17 drivers are designated to Schofield Barracks, Wheeler, and HMR in support of Army-connected schools
- \* Service to Santa Fe, Kaena, and General's Loop suspended

### Aiea, Moanalua, and Radford Complex:

- \* Requires 27 drivers, 19 positions filled
- \* Service to AMR students assigned to Aiea High School suspended  
(schools near city bus lines, similar to Aiea High School, have a lower priority)

### Contingency Planning:

- \* Polynesian Adventure tour buses will be hired to fill vacant bus driver spots
- \* Encourage usage of \$15/month afternoon shuttles from middle and high schools to the Child & Youth Services Youth Centers at Schofield Barracks, AMR, and Fort Shafter
- \* Santa Fe, Kaena, and General's Loop students provided with city bus passes and a space-available form for nearby routes
- \* Aiea High School students in AMR may apply for Geographic Exception to Radford High School to walk to/from school
- \* Carpooling app is being tested as a pilot in Mililani for future DOE-wide use





# (DFMWR) ACS – Community Needs Assessment

15 JUN - 15 AUG 2025

The 2025 **Family Advocacy Program (FAP) Community Needs Assessment (CNA)** is designed to gather comprehensive information about the perceptions, behaviors, and needs of the community related to family violence prevention and education services.

- ☐ Utilizes a 25-question survey
- ☐ Covers topics such as stress management, family life, and deployments
- ☐ Open to all Servicemembers, family members, DOD civilians, retirees, and reservists

To complete the survey, visit

[https://www.surveymonkey.com/r/FAP\\_CNA\\_LY2HGV3](https://www.surveymonkey.com/r/FAP_CNA_LY2HGV3) or scan the QR code



For more information, contact ACS at (808) 787-4227



Dumping of bulk waste at unauthorized locations is a punishable offense (UCMJ Articles 92).  
MPs will issue citations when proper evidence is provided

## USAG Hawaii Solid Waste and Recycling Service Contract:

- Includes refuse dumpster and recycling bin pick-up service.
- Does not include regular bulk waste pick-up (limited to bi-annual Post Clean-Ups)
- Units responsible for keeping area around dumpster free of trash/bulk waste (dumpster will not be serviced if bulk items block access)

## Bulk Waste (non-housing areas)

- **Bulk waste** = discarded furniture, appliances, wood pallets/scrap wood, mattresses, automotive parts, propane tanks, tires, etc.
- **Request a temporary dumpster** to properly dispose of bulk waste in AOR; Units pay rental fee (GPC card). Contact DPW Service Contract Branch at 808-864-0932 to coordinate a non-recurring (temporary) dumpster
- **Personal items** (items not purchased with government funds) may be disposed of by owner at City and County Convenience Center (off post). Must deliver bulk items in POV.
- **DOD furniture and equipment** must be turned in through Supply (SSA)





## Island Palm Communities (Residents):

- Residents of Island Palm Communities have curbside bulk pick-up service
- Bulk items should be placed curbside, after 5 p.m., evening prior to scheduled trash pick-up day.

## Army Recycle Center (ARC): Schofield Barracks 1087 McMahon Rd., Mon-Fri, 0730-1600, 808-861-2720

- Bulk items accepted at ARC: cardboard (flattened), untreated wooden pallets (10/Unit/day); scrap wood, scrap metal, green waste
- Acceptable scrap metal items include: BBQ grills (no propane tanks), metal furniture, auto parts (no tires)
- Call ahead to confirm dumpster space for large quantities



## CARDBOARD Recycling:

The **Army Recycling Center\*** has increased capacity for weekend cardboard drop-offs.

1. Remove all packing materials and tape
2. Flatten boxes
3. Drop off cardboard at the Army Recycle Center
  - Mon-Fri, 0730-1600
  - Sat/Sun, 24 hrs/day, utilize cardboard drop-off container outside main entrance

**CORRECT** 



**INCORRECT** 



\*Army Recycling Center: Schofield Barracks, 1087B McMahon Rd., 808-861-2720



# Scheduled Outages



## Scheduled Electrical Outages

- **28 July (1000-1400)**, SB – Kline St., Repair faulty breaker
- **4 – 5 August (2130-0330)**, SB – East Range, Electrical Switch Replacement (V20794)
- **13 August (0830-1430)**, Ft. Shafter Golf Course, Pole Replacement
- **14 – 15 August (2100-0600)**, SB, Menoher Substation, Castner SW 4830 Installation
- **30 August (0830-1430)**, SB – Menoher Substation, Transformer Replacement (V21494)



## Scheduled Water Outages

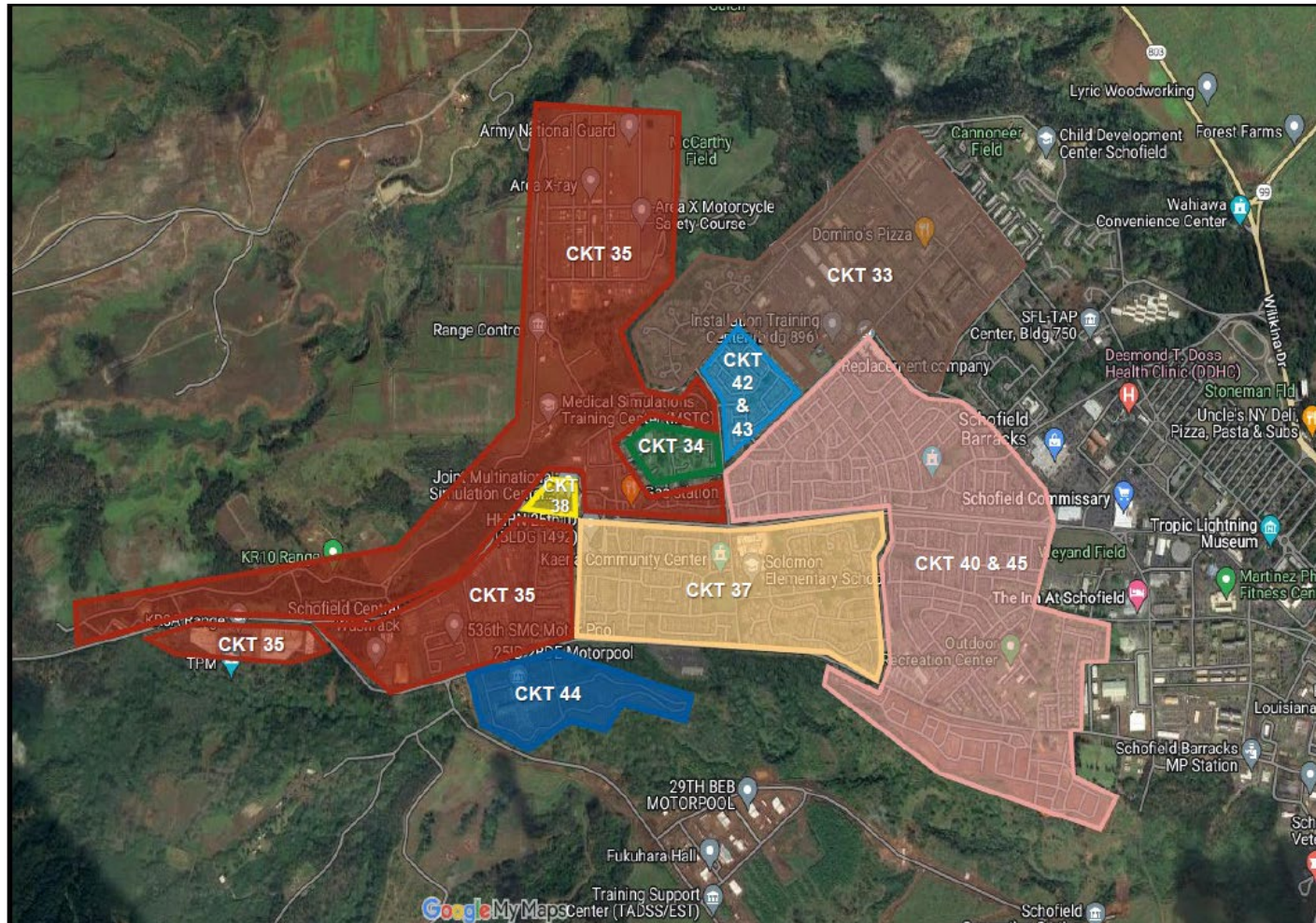
- **22 July (0800-1400)**, Wheeler AAF Chapel, The Hangar (Restaurant), Water Distribution System Valve Replacement
- **29 July (0800-1400)**, SB – Foote Ave. & Lewis St (E Quad, 3-7FA Bldgs.), Water Distribution System Valve Replacement
- **(T) 8 August (0800-1400)** – Schofield Barracks (Bowling Center / Inn at Schofield), Water Distribution System Valve Replacement

# SCHOFIELD BARRACKS

## Scheduled Electrical Outage

**Date:** 14 AUG (2100) – 15 AUG (0600)

**Purpose:** Installation of Temporary 46KV Switch 4830



## Outage Locations

- CKT 33 = Brown
- CKT 34 = Green
- CKT 35 = Red
- CKT 37 = Beige
- CKT 38 = Yellow
- CKT 40 & 45 = Pink
- CKT 42 & 43 = Light Blue
- CKT 44 = Dark Blue



# Island Palm Communities (IPC)

## EV Charging

**IPC is pleased to announce EV charging is available in our communities**

### ➤ Overview

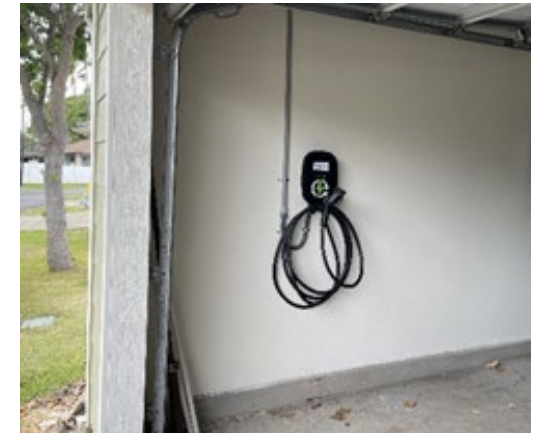
- IPC's partner vendor will install charging stations at their cost
- Residents sign up for a monthly subscription, and paying for kWh at the local electric rate
- This program is solely for IPC residents

### ➤ In-Home Residential EV Charging

- Level 2 EV charger installation in garages or carports, available for most homes at IPC
- Can take as little as 5-6 hours to charge to full battery
- EV Chargers will be unavailable between 6-8pm to reduce stress on the grid
- First installs are currently in progress

### ➤ Community EV Charging

- Level 3 DC fast chargers will come on-line in the future at select locations



# Island Palm Communities (IPC)

## EV Charging

### ➤ EV Charging Getting Started

- Visit <https://troes.io> to begin registration or click here for a link to the flyer. <https://4pst.us/kFH>
- Select a ChargeTime plan that is right for you. This is a direct subscription between the resident and TROES.
- A TROES installation specialist will call you to coordinate the installation schedule.
- Once the EV charger is installed, you can conveniently manage usage, billing, scheduling, and more through the ChargeTime app or by directly contacting TROES.
- *\*Available in all neighborhoods except legacy homes in the Santa Fe neighborhood built prior to 1990 (Akolea Aloala), historic homes located on Wheeler, the legacy Parks neighborhood and Palm Circle.*







OFFICIAL NOTIFICATION SYSTEM OF  
THE CITY AND COUNTY OF HONOLULU

Informed  
**AWARE**  
Prepared



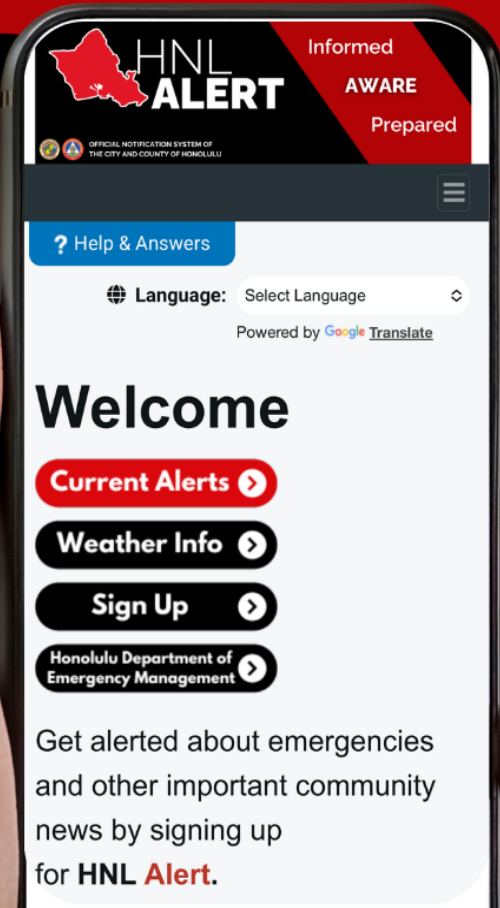
Informed  
**AWARE**  
Prepared



Sign up to O'ahu's  
NEW notification  
system at [hnlalert.gov](https://hnlalert.gov)

### GET ALERTS ABOUT:

- ❗ Severe Weather
- ❗ Emergency Info
- ❗ Road Closures
- ❗ Ocean Conditions
- ❗ Water Main Breaks
- ❗ and more!



- 1 CUSTOMIZE YOUR ALERTS:** Create an account at [hnlalert.gov](https://hnlalert.gov). Select the topics you care about. Pick any combination of text messages, email alerts, or push notifications from the app. Make changes at any time!
- 2 URGENT ALERTS ONLY:** Text to quick subscribe to get the most important safety alerts by text. No registration needed! Text "HNLALERT" to 888777.

Get alerted about emergencies and other important community news by signing up for **HNL Alert**.

FOLLOW US: @oahudem @oahudem @oahu\_dem



# 2025 USAG Hawaii Upcoming Events

25 JUL : Chaplain Corps 250th celebration @ Richardson Pool

25 JUL : ACS 60<sup>th</sup> Anniversary

28 JUL: 25ID Change of Command Ceremony

28 JUL: Ohana Open Market @ Schofield

AUG: Antiterrorism Awareness Month

04 AUG: HIDOE Public Schools First Day

09 AUG: Color Blast Fun Run

18 AUG: Hawaii Statehood Day

29 AUG: Garrison Organizational Day

01 SEP: Labor Day

13 SEP : Father Daughter Dance @ the 604 Ballroom

28 SEP: Gold Star Mother's & Family Day (Punchbowl)





# Joint Pacific Multinational Readiness Center Exercise



An increase in movement of military vehicles, airplanes, and helicopters are expected to occur at Wheeler Army Airfield, Schofield Barracks, Kahuku Training Area, Dillingham Airfield and Lualualei areas from **Aug., Oct., and Nov. 2025**, as part of the (JPMRC) Rotation 26-01.

**The community noise concern line, please call 808-787-1528 or  
Email: [usag.hawaii.comrel@army.mil](mailto:usag.hawaii.comrel@army.mil)  
Mahalo for your patience and understanding.**



## TRAINING

Expect to hear and see more training-related noise during nighttime hours than usual.



## AIRCRAFT

Helicopter and fixed-wing aircraft will operate during daytime and nighttime hours.



## VEHICLES

There will be an increase in medium and large size military vehicle movement, mostly near PTA and Hilo Airport.



## TRAFFIC

An increase in military traffic is expected between PTA and Hilo Airport, but not expected to affect traffic in other areas.





# TRIPLER ARMY MEDICAL CENTER

## Traffic Pattern Adjustment

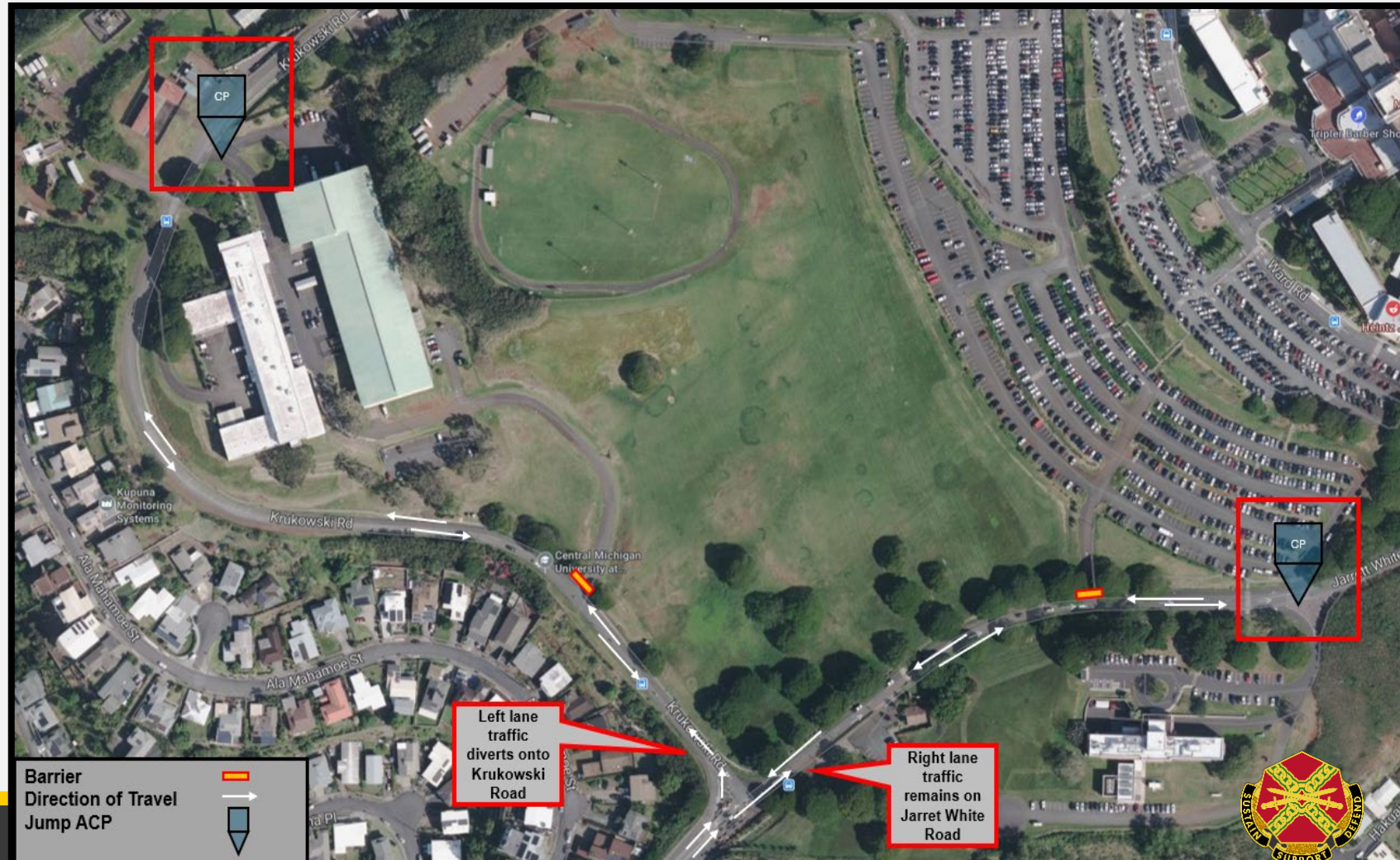
**Date:** Friday, 25 July 2025, 0500 to 0800, Monday Through Friday until construction is completed.

**Purpose:** To mitigate traffic congestion at the ACP.

Left lane: Diverted to Krukowski Rd.  
Right lane: Remains on Jarret White Rd.

Please follow the posted signs and allow extra time for your commute.

Thank you for your patience as we work to keep our community safe!







# THANK YOU.

[home.army.mil/hawaii](http://home.army.mil/hawaii)





**\* TB Screenings are done at Immunization Clinic as walk-in**

# Army Medicine

## Pediatric, Adolescent & Young Adult Medical Home



 **4th Floor, F Wing (Mountainside)**  
**1 Jarrett White Road**  
**Honolulu, HI 96859**

 **Monday-Friday**  
**8 a.m. to 12 p.m., 1-3:30 p.m.**  
**Open at 10 a.m. on 2nd and 4th Thursdays**  
**Closed on Federal holidays**

### About the Pediatric, Adolescent & Young Adult Medical Home

Our Medical Home provides evidence-based, patient-centered health care to patients from birth to age 26.

#### What's different about a medical home?

Each patient partners with a primary care provider and nurses to coordinate care with an extended team of behavioral health professionals, pharmacists, subspecialists and others.

Your core health care team works with you over time to take care of new health concerns as they arise, ensure delivery of preventive screening and services, manage chronic health problems, and promote a spirit of health and wellness.

The relationship between each patient and their health care team is the heart of the Medical Home.

#### Walk-In Immunization Clinic

Immunizations are provided at the Pediatric, Adolescent & Young Adult Medical Home on a walk-in basis.

*Immunization hours follow clinic hours.*

#### School and Sports Physicals

Let the scheduler know that you are scheduling a school and/or sports physical.

Required forms are posted on our website (see below). Bring printed, completed forms to your appointment.

Different forms are required for different schools and programs. If you are unsure which forms are required, please contact the school or program to clarify.


#### Find Us Online!

##### Website:

<https://tripler.tricare.mil/Health-Services/Pediatric-Adolescent-and-Young-Adults-Health/Pediatric-Adolescent-Young-Adult-Medical-Home>

Or scan the code!



 **Call to Schedule: 888-683-2778**  
**Schedule Online: [my.mhsgenesis.health.mil](https://my.mhsgenesis.health.mil)**



## DDHC Immunization Clinic Hours

Hours for the DDHC Immunization Clinic

**Monday-Wednesday, and Friday:**

**0800-1100 and 1300-1500**

**Thursday**

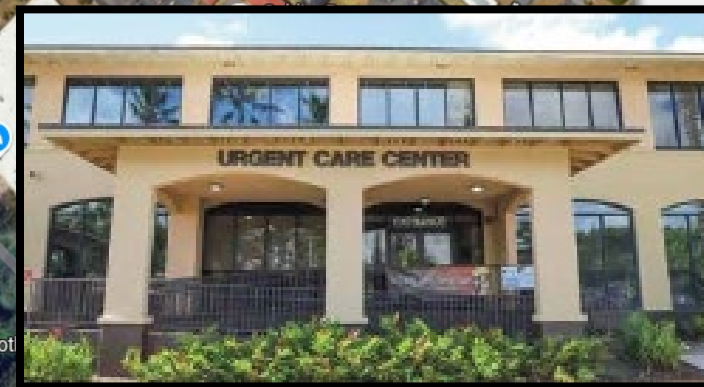
**0800-1100**

*Closed 1145 to 1245 daily for lunch.*

**Must be assigned a provider at DDHC**

**Location: DDHC bldg. 683 G 1<sup>st</sup> floor**

**Phone: 808-433-8800**



Desmond T. Doss Health Clinic







# 2025 Graduation Recognition Ceremony

17 December 2025 @ 1130

If you are affiliated with the military, have graduated from an accredited college/university, AND have never participated in an Army Installation graduation recognition ceremony, we would like to honor you at our ceremony.

Please use the QR code to register!

Mālama Nā Koa!  
Taking care of the Student Warrior is what we do!



# WARRIOR ADVENTURE QUEST



Download MY ARMY POST APP



# ADJUST YOUR LATITUDE



NO-COST resiliency program  
options in Hawaii:

1. REBALL (*Paintless Paintball*)
2. BLITZBALL (*Battleball & Soccer*)
3. MOKOLI'I ISLET (*Ocean Kayaking*)

(More programs coming soon!)

[HIMWR.com](http://HIMWR.com) or [MWR HAWAII](https://www.facebook.com/MWRHAWAII)



**WARRIOR ADVENTURE QUEST**  
HAS PROVIDED WITH ADULT AND JUNIOR  
SCOUTING, RECREATIONAL, AND  
OPERATIONAL COMPONENTS AND DIRECTLY  
SUPPORTS: 8007

## WARRIOR ADVENTURE QUEST

U.S. Army Garrison Hawaii

435 Ulrich Way • Bldg. 2110 • Schofield Barracks, Hawaii

**Phone: (808) 787-4097**



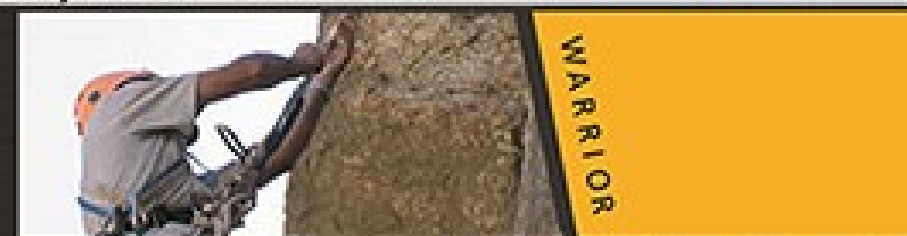
[waq.armymwr.com](http://waq.armymwr.com)  
[himwr.com](http://himwr.com)

## WAQ ACTIVITIES

selected using following criteria:

- ▼ High Adventure Component
- ▼ Leverage local resources at each Garrison
- ▼ L-LAAD trained
- ▼ Designed for Platoon-Sized Group
- ▼ Team-Building

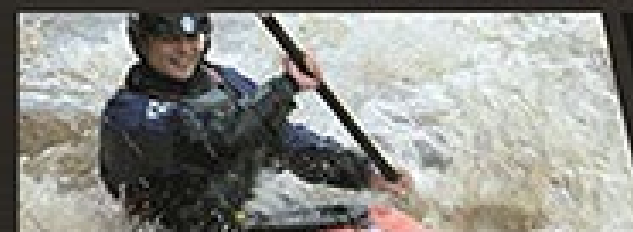
All activities are designed to instill cohesion, build teamwork, and share  
esprit-de-corps in a supervised and controlled manner.



WARRIOR



ADVENTURE



QUEST





# United Services Organization (USO) August Events

USO SCHOFIELD BARRACKS

BACK TO SCHOOL BASH



AUG 8  
3 p.m - 5:30 p.m

Location : Richardson Pool



All center policies apply and while supplies last



Register here!



Cadet Sheridan Rd Bldg 578, Schofield Barracks, HI 96786

USO SCHOFIELD BARRACKS

WEDNESDAY LUNCH



AUG 13  
11:30 a.m - 1 p.m



All center policies apply and while supplies last



USO.org/CENTERS

USO SCHOFIELD BARRACKS

SUCCULENT SOCIAL: BYOG (BRING YOUR OWN GLASSWARE)

AUG 21  
5:30 p.m - 7 p.m





Register here!



USO.org/CENTERS

All center policies apply and while supplies last

USO YOUTH PROGRAMS

KIDS TIME

AUG 28  
10 a.m - 11 a.m





USO.org/CENTERS

All center policies apply and while supplies last

Registration Required

USO SPECIAL DELIVERY\*

BABY SHOWER AT SCHOFIELD BARRACKS

AUG 29  
9:30-11:30am





USO.org/SpecialDelivery

We welcome new and expecting moms, including active duty service members and military spouses within the first six months postpartum. Due to limited space, we are unable to accommodate children over six months.



# Defense Commissary Agency (DeCA) Holidays/Campaign

## Holidays/Campaign

### Upcoming Holiday Operational Hours:

Monday September 1, 2025 – Labor Day **0900-1700**

Monday October 13, 2025 – Columbus Day **0900-1700**

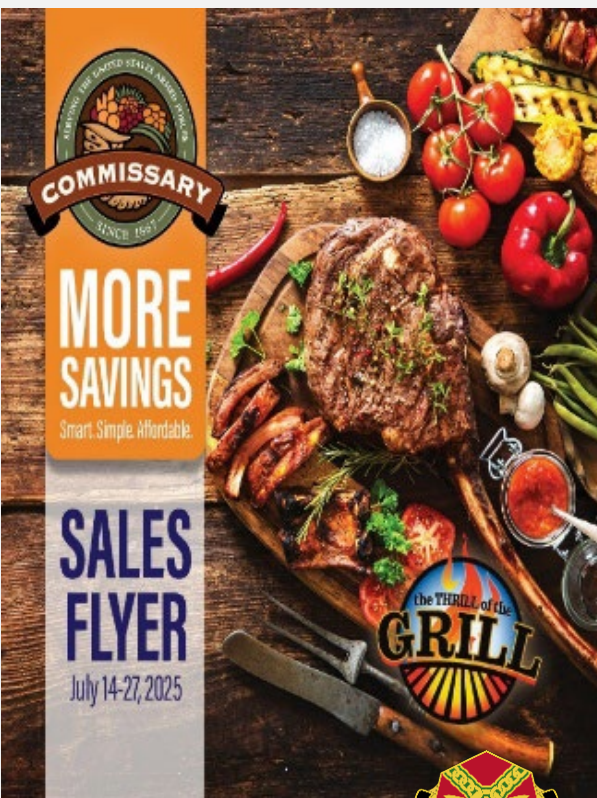
Tuesday November 11, 2025 – Veterans Day **0900-1700**

### Thrill of the Grill:

From July 14-27, your commissary is turning up the heat with even more sizzling deals – just in time for summer’s peak of cookouts, backyard gatherings and family celebrations. The current [Commissary Sales Flyer](#) is packed with unbeatable savings and value to make every meal memorable.

Keep the grill lit and enjoy the taste of Freedom’s Choice new [24-ounce marinated meat varieties](#).


Selection and price may vary by store: Pollo Asado (Thin-Sliced Chicken Breast), Shawarma (Boneless Skinless Chicken Thighs), Teriyaki (Boneless Skinless Chicken Thighs), Lemon Herb (Boneless Skinless Chicken Thighs), Santa Maria Tri-Tip, Carne Asada, Skirt Steak, Garlic Peppercorn Bacon Wrapped Pork Tenderloin, Sweet & Smoky Bacon Wrapped, Pork, Tenderloin, Pork Bulgogi





# Defense Commissary Agency (DeCA) Special Order Form



		
<b>COMMISSARY PATRON SPECIAL ORDER FORM</b> <i>(For use of this form, see DeCAD 40-1; OPR is DO.)</i>		
COMMISSARY NAME		
<input type="checkbox"/> GROCERY DEPARTMENT <input type="checkbox"/> BAKERY	<input type="checkbox"/> MEAT DEPARTMENT <input type="checkbox"/> SEAFOOD DEPARTMENT	<input type="checkbox"/> PRODUCE DEPARTMENT <input type="checkbox"/> SPECIALTY SHOPS
ITEM DESCRIPTION	SIZE/THICKNESS	QUANTITY
DATE ITEMS NEEDED	PATRON'S NAME	PHONE NUMBER
EMAIL ADDRESS		
EMPLOYEE ACCEPTING ORDER	COMSY PHONE NUMBER	DATE



# Defense Commissary Agency (DeCA) Information/Opportunities



## Information:

### **Your Commissary Benefit Is Waiting — Save 25% or More Today!**

Did you know that simply using your military benefit at the commissary can save you an average of 25% or more on your everyday grocery bill?

As an authorized shopper, you have exclusive access to trusted national brands at significantly lower prices. From fresh produce and meats to pantry staples and household essentials, your commissary is here to help you stretch your dollar further.

[Schofield Barracks | Commissaries](#)

## Opportunities

- **Purina Military PCS with Pets.** Throughout 2025, a monthly sweepstakes will offer commissary patrons a chance to win \$500 toward pet travel fees and a pet travel kit. Enter at <https://www.MilitaryPetPCS.com/contests>.

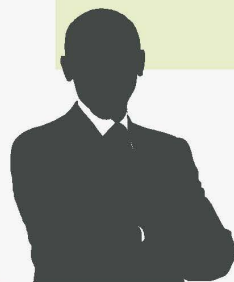






State of Hawaii  
Workforce Development Division  
Presents...

# HIRING EVENT FOR MILITARY SPOUSES



**July 22, 2025**

**10:00 AM – 2:00 PM**

**604 BALLROOM**

**1249 KOLEKOLE AVE**

**SCHOFIELD BARRACKS, HI 96857**



## TIPS:



Bring copies of current resumes

Dress for possible job interviews

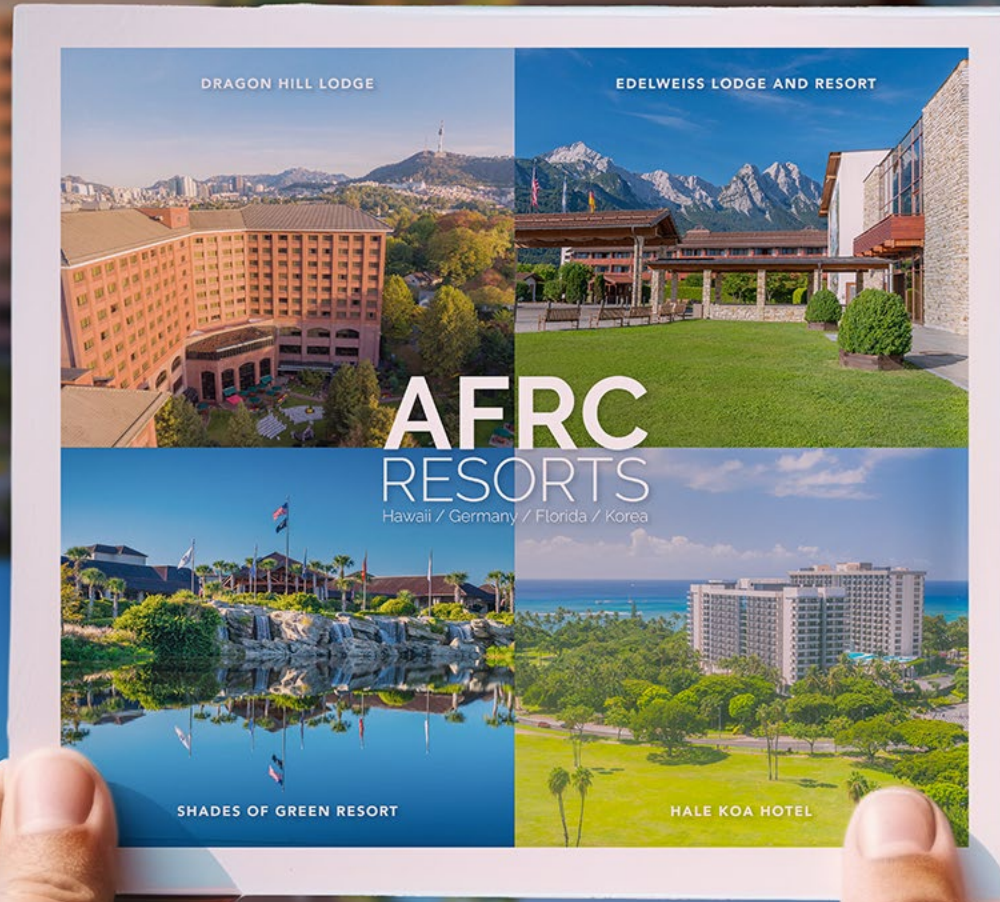
For further inquiries, please contact Emily Cardone-Dennis at  
(808)586-8706 or [emily.c.cardone-dennis@hawaii.gov](mailto:emily.c.cardone-dennis@hawaii.gov).

THESE SERVICES ARE 100% FEDERALLY FUNDED BY 2024 WIOA DISLOCATED WORKER RAPID RESPONSE GRANT ALLOCATION TO OAHU WORKFORCE DEVELOPMENT DIVISION IN THE AMOUNT \$1,518,263. THE STATE OF HAWAII DEPARTMENT OF LABOR AND INDUSTRIAL RELATIONS IS AN EQUAL OPPORTUNITY/AFFIRMATIVE ACTION AGENCY. AUXILIARY AIDES AND SERVICES ARE AVAILABLE UPON REQUEST TO INDIVIDUALS WITH DISABILITIES. TDD/TTY DIAL 711 THEN ASK FOR (808)586-8877.

DLIR WDD 7/14/25



# Postcard Perfect Vacation Sale



Dreaming of your next getaway? Look no further! Whether you want to sink your toes into the sands of Hawaii, gaze up at the Bavarian Alps, stroll through the vibrant streets of Seoul, or enjoy family fun in sunny Florida, AFRC Resorts has the perfect destination.

