



COMMUNITY INFORMATION EXCHANGE

U.S. ARMY GARRISON HAWAII

DECEMBER 19, 2024

AGENDA

The background of the slide is a photograph of several soldiers in silhouette, standing in a field at sunset. The sky is a mix of orange, red, and blue. The soldiers are wearing helmets with night vision goggles and have backpacks. The overall mood is somber and professional.

- Opening Remarks/E-Bike Guidance
- WAAF Planned Outage
- Suicide Prevention
- Illegal Parking
- Full Scale Exercise
- Holiday Religious Services
- Holiday Events Off Post
- Holiday Events On Post
- Designated Driver Program
- Closing Remarks

EMERGENCY SERVICES


E-Bike Guidance

Helmets are MANDATORY 

- ☐ Must have headlight if riding during limited visibility
- ☐ Must have a red reflector mounted on rear of bike
- ☐ Must have a reflector mounted on each side of the bike
- ☐ Reflective body-wear gear is recommended
- ☐ Bicyclists using roadway have all the rights/duties applicable to the driver of a motor vehicle and must follow same rules/laws
- ☐ Carry one rider only
- ☐ Ride single file and far right of lane
- ☐ All bicycles with 20-inch wheels or greater diameter are required to be registered on Oahu (\$15.00)

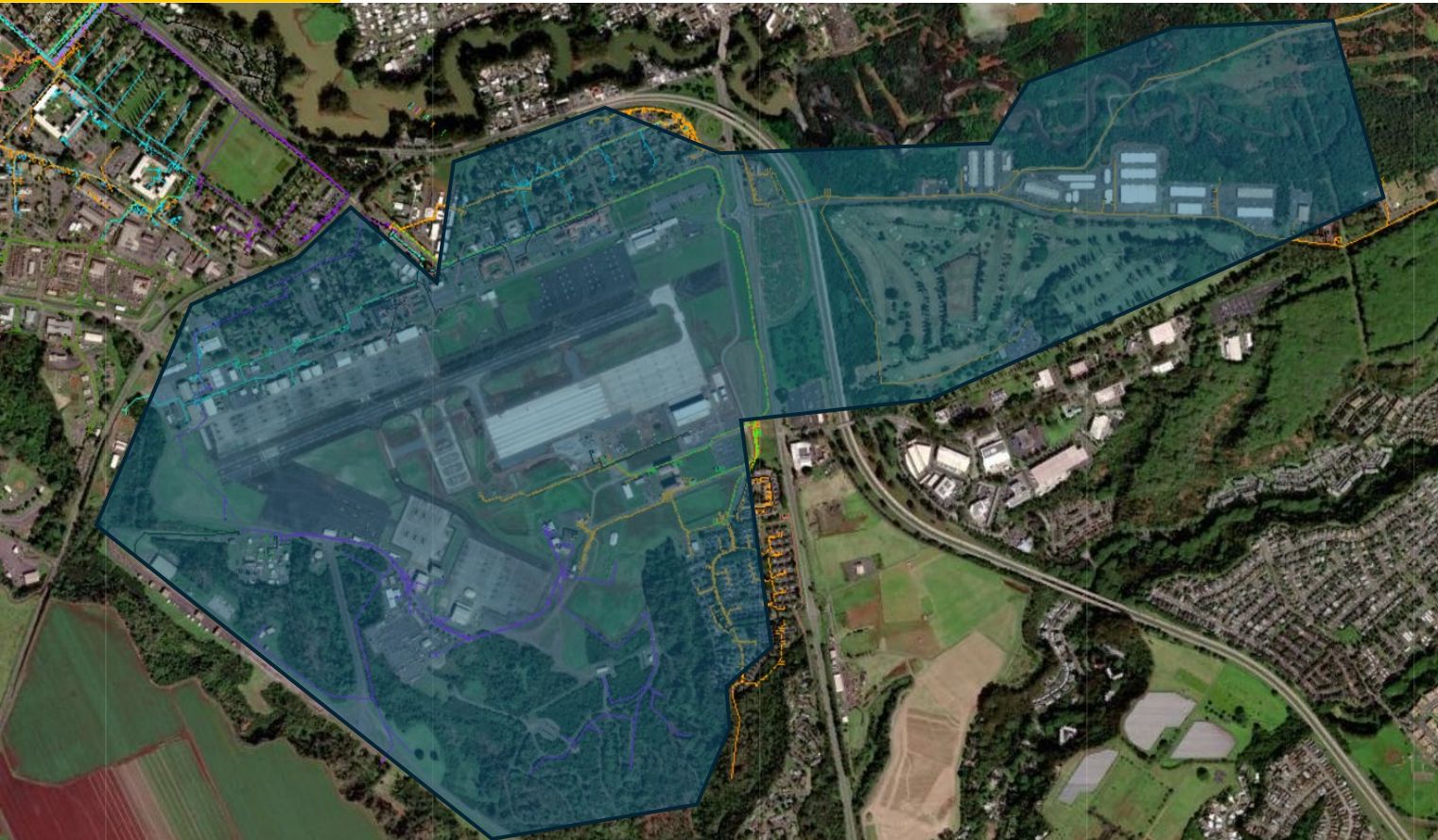
**Properly fitted helmet is
most important piece of safety gear
IAW The National Safety Counsel**



- ☐ E-Bike motor must be less than < 750 watts
- ☐ Hawaii electric bicycle law: An E-bike is a low-speed electric bicycle whose assisted maximum speed on a paved level surface, when powered solely by its motor, is less than 20 mph”
- ☐ **MUST BE 15 YEARS OR OLDER to legally operate**
Helmets are MANDATORY
- ☐ Must have headlight if riding during limited visibility
-  ☐ Must have a red reflector mounted on rear of bike
- ☐ Must have a reflector mounted on each side of the bike
- ☐ Reflective body-wear gear is recommended
- ☐ Bicyclists using roadway have all the rights/duties applicable to the driver of a motor vehicle and must follow same rules/laws
- ☐ Carry one rider only
- ☐ Ride single file and far right of lane
- ☐ All E-bikes are required to be registered on Oahu (\$30.00) MUST BE 18 YEARS OLD to register



WHEELER ARMY AIRFIELD (WAAF) Scheduled Power Outage



January 16-17, 2025
9:00pm-05:30 am

Purpose

Wheeler Substation Maintenance

Outage Locations

- WAAF (Base wide)
- East Range
- Leilehua Golf Course

SUICIDE PREVENTION Holiday Help Guide

Military & Veterans Crisis Line: 838255 (Text)

Local Emergency: 911

Behavioral Health: 808-433-6060

Chaplain's RSO: 808-787-1551

Chaplain After Hours: 808-551-9636

Suicide and Crisis Lifeline: 988

ACE TIER I NEXT TRAINING

POC: Ms. Rhonda Shabazz

DSN: 315-437-9105

Office: 808-787-9105

shabazz.k.rhonda.civ@army.mil

JANUARY

22

Awareness & Warning Signs

- Alcohol and drug Abuse
- Hopelessness
- Change in behavior, etc

Foster Connection & Support

- Reach out
- Offer inclusivity
- Create safe space
- Community activities (i.e., BOSS)

Advocate For Empathy And Understanding

- **Combat Stigma:** seeking help is “strength”
- **Offer Reassurance:** acknowledge feelings and help available
- **Set boundaries and develop a plan:** know when to say “This is not for me”

SUICIDE PREVENTION

The Power Within Workshop

The Power Within Workshop (AM Session)

| | |
|-----------|------------------------------------|
| 0800-0840 | Money Talk |
| 0845-0900 | Low-Risk Choices |
| 0900-0915 | Garrison Commander Opening Remarks |
| 0920-1000 | ACT Resiliency |
| 1005-1045 | Relationships |
| 1045-1100 | Q and A |

The Power Within Workshop (PM Session)

| | |
|-----------|------------------|
| 1200-1240 | Money Talk |
| 1245-1325 | Low-Risk Choices |
| 1330-1410 | ACT Resiliency |
| 1415-1500 | Relationships |
| 1500-1515 | Q and A |

Life is 10% of what happens and
90% how you respond!
-C. Swindoll

WHEN: JAN. 13, 2025

TIME: SESSION 1 0800-1100 &
SESSION 2 1200-1500

WHERE: SGT SMITH THEATER

Get In FOCUS

Money~Relationships~Low Risk Choices~Resiliency

Hosted by ASAP, ACS, R2PC, and USARPAC RSO



EMERGENCY SERVICES

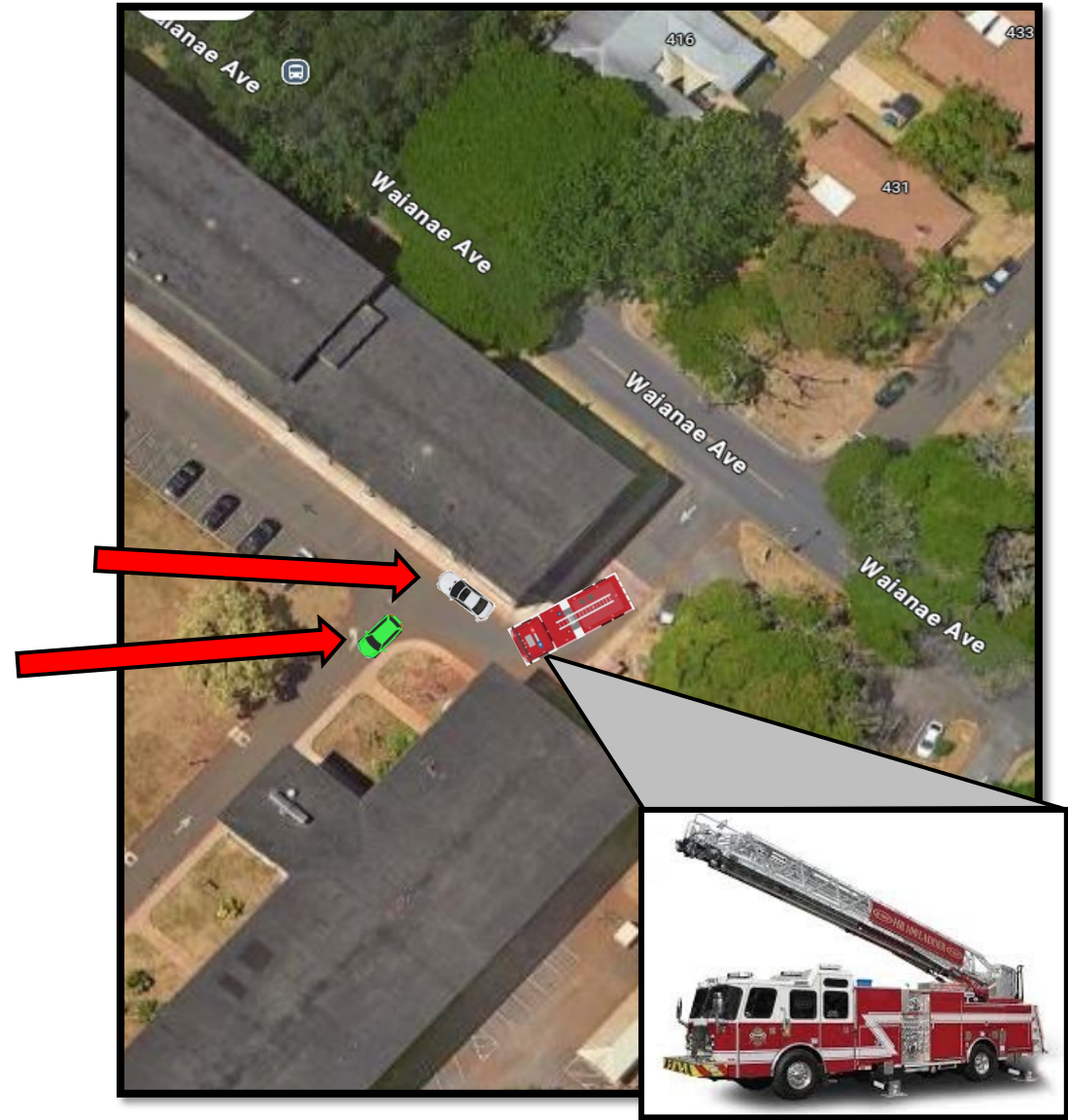
Illegal Parking

PARK ONLY IN DESIGNATED AREAS

AVOID RED CURBING

Any location within an intersection, along the edges or curbsides around corners and in channelized areas.

At any area narrow enough to make passing difficult, dangerous, or impossible.



EMERGENCY SERVICES

Safety Reminders



NO PORCH PIRATES

**CALL POLICE ON
SUSPECTED PORCH PIRATES**

Shafter: 808-438-9395
Schofield: 808-655-7114



**PRACTICE EXTREME
CAUTION WITH
TURKEY AIR FRYERS**



**KEEP REAL
CHRISTMAS TREES
HYDRATED**

FORTRESS SHIELD '25

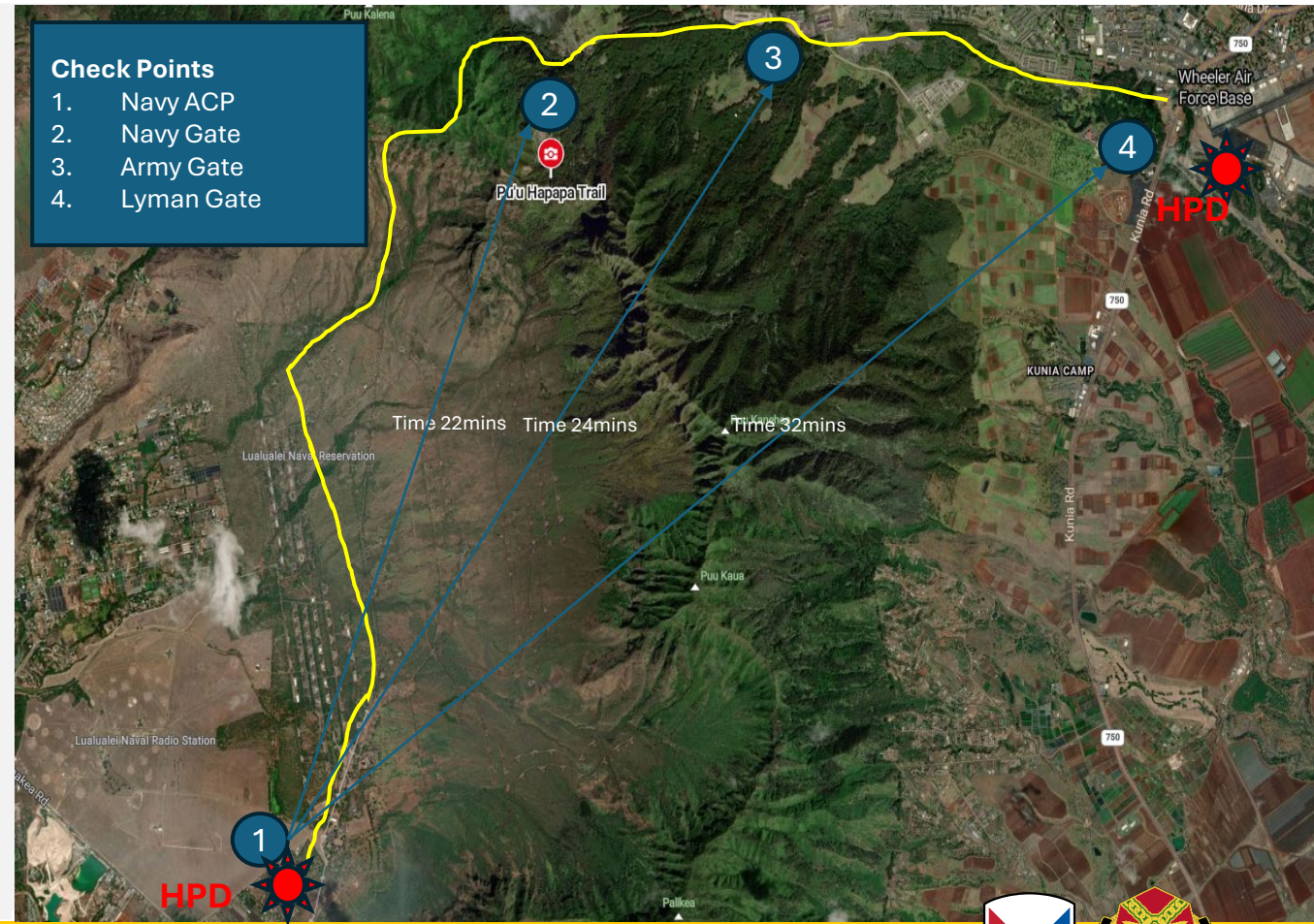
Full Scale Exercise

What is Fortress Shield '25?

On **5 Feb 2025, 9:00 am-1:00 pm**, USAG Hawaii will conduct a simulated full-scale protection emergency evacuation across Kolekole Pass and Suspicious Package response vicinity Hale Koa Hotel

Key players:

- USARHAW role players
- USAG Hawaii
- Joint Base Pearl Harbor Hickam
- HPD
- HFD
- Hawaii Emergency Management Agency
- City/County of Honolulu Emergency Management
- Hawaii Department of Transportation



RELIGIOUS SERVICES

Christmas Chapel Services

Catholic Mass of the Nativity

MPC: Christmas Eve
1600 Christmas Pageant and Concert
Mass, at 1700

MPC: Christmas Day Mass, at 1100

AMR: Christmas Eve Mass, at 1700

Solemnity of Mary the Mother of God

Holy Day of Obligation

MPC: 1 Jan, 1130

AMR: 1 Jan, 1130

Protestant Christmas Services

MPC: Combined

Christmas Eve Service, at 1900

AMR: Grace Chapel

Christmas Eve Service, at 1900

Fort DeRussy Chapel

Christmas Eve Service, at 1700



ON POST

USO Hawaii Holiday Events

Dec 20th, 2024
7:00 AM HST (700W)

USO Fort Shafter Operation: Morning Zen Yoga

220 Casey St Bldg. 503B Fort Shafter, HI 96858 United States

Operation: Zen Morning is a beginner-friendly yoga session designed for all USO patrons, perfect for starting your weekend with a healthy and relaxing morning. Limited yoga mats will be provided; however, we encourage you to bring your own mat or to...

Dec 20th, 2024
5:00 PM HST (1700W)

Dungeons and Dragons

220 Casey St Bldg. 503B Fort Shafter, HI 96858 United States

Calling All Adventurers!

CHRISTMAS

Dec 25th, 2024
12:00 PM HST (1200W)

USO Schofield Holiday Hangout

208 Trimble Rd Bldg. 586 Schofield Barracks, HI 96857 United States

Single and unaccompanied service members can enjoy a festive day of karaoke, gift stealing, and Christmas lunch at USO Schofield Barracks from 12 p.m. - 2 p.m.

CHRISTMAS

Dec 25th, 2024
2:00 PM HST (1400W)

Holiday Heroes Luncheon

220 Casey St Bldg. 503B Fort Shafter, HI 96858 United States

USO Fort Shafter warmly invites you to join us for a festive Christmas Lunch at our center. This special event is open to all single and unaccompanied service members, as well as military families seeking a welcoming place to enjoy a holiday meal an...



ON POST Holiday Event Calendars



[HAWAII.ARMYMWR.COM/
CALENDAR](https://hawaii.armymwr.com/calendar)



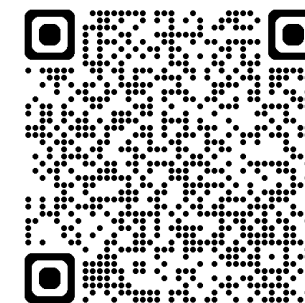
HAWAII



[HAWAII.USO.ORG/EVENTS](https://hawaii.uso.org/events)

MWR

Facility Holiday Hours



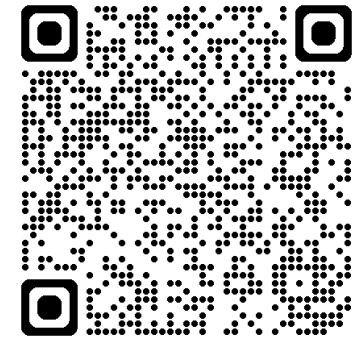
| FACILITIES | DEC. 24 TUESDAY | DEC. 25 WEDNESDAY | DEC. 26 THURSDAY | DEC. 27 FRIDAY |
|---|----------------------|----------------------|----------------------|----------------------|
| Community Recreation | | | | |
| Aliamanu Military Reservation (AMR) | | | | |
| AMR Physical Fitness Center | 5 a.m.-1 p.m. | Closed | 7 a.m.-3:30 p.m. | 5 a.m.-8:30 p.m. |
| AMR Pool | Closed | Closed | Closed | Closed |
| Fort Shafter (FS) | | | | |
| FS Library | 10 a.m.-3 p.m. | Closed | 10 a.m.-3 p.m. | 10 a.m.-3 p.m. |
| FS Outdoor Recreation Center | Closed | Closed | Closed | Closed |
| FS Physical Fitness Center | 5 a.m.-1 p.m. | Closed | 7 a.m.-3:30 p.m. | 5 a.m.-7 p.m. |
| Helemano Military Reservation (HMR) | | | | |
| HMR Physical Fitness Center | 5 a.m.-1 p.m. | Closed | 7 a.m.-3:30 p.m. | 5 a.m.-8:30 p.m. |
| HMR Pool | Closed | Closed | Closed | Closed |
| Schofield Barracks (SB) | | | | |
| Health & Fitness Center | 5 a.m.-1 p.m. | Closed | 7 a.m.-3:30 p.m. | 5 a.m.-8:30 p.m. |
| Martinez Physical Fitness Center | 5 a.m.-1 p.m. | Closed | 7 a.m.-3:30 p.m. | 5 a.m.-8 p.m. |
| Richardson Pool | Closed | Closed | 10 a.m.-3 p.m. | 11 a.m.-6 p.m. |
| SGT Yano Library | 10 a.m.-3 p.m. | Closed | 10 a.m.-3 p.m. | 10 a.m.-3 p.m. |
| SB Arts & Crafts Center | Closed | Closed | 10 a.m.-4 p.m. | 9 a.m.-4 p.m. |
| SB Auto Skills Center | 11:30 a.m.-5 p.m. | Closed | 11:30 a.m.-5 p.m. | 11:30 a.m.-7 p.m. |
| SB Leisure Travel Services | 9 a.m.-4 p.m. | Closed | 9 a.m.-4 p.m. | 9 a.m.-4 p.m. |
| SB Outdoor Recreation Center | 8:30 a.m.-5 p.m. | Closed | 8:30 a.m.-5 p.m. | 8:30 a.m.-5 p.m. |
| Tropics Recreation Center | 8 a.m.-4 p.m. | Closed | 8 a.m.-4 p.m. | 8 a.m.-6 p.m. |
| Tripler Army Medical Center (TAMC) | | | | |
| TAMC Physical Fitness Center | 5 a.m.-1 p.m. | Closed | 7 a.m.-3:30 p.m. | 5 a.m.-6 p.m. |
| TAMC Pool | 11 a.m.-1 p.m. | Closed | 11 a.m.-3:30 p.m. | 11 a.m.-6 p.m. |
| Wheeler | | | | |
| Wheeler Physical Fitness Center | 5 a.m.-1 p.m. | Closed | 7 a.m.-3:30 p.m. | 5 a.m.-8:30 p.m. |
| Other | | | | |
| Army Community Service | 7:30 a.m.- 4:30 p.m. | Closed | 7:30 a.m.- 4:30 p.m. | 7:30 a.m.- 4:30 p.m. |
| Piilaa Army Recreation Center Reservation | 8:30 a.m.-5 p.m. | 8 a.m.-5 p.m. | 8:30 a.m.-5 p.m. | 8:30 a.m.-5 p.m. |
| Kennels | 10 a.m.-2 p.m. | Closed | 10 a.m.-2 p.m. | 10 a.m.-2 p.m. |

| FACILITIES | DEC. 24 TUESDAY | DEC. 25 WEDNESDAY | DEC. 26 THURSDAY | DEC. 27 FRIDAY |
|-------------------------------------|--------------------|----------------------|---------------------|----------------------------------|
| Business Operations | | | | |
| Fort Shafter (FS) | | | | |
| Fort Shafter Bowling | 8 a.m.-3 p.m. | Closed | 3-9 p.m. | 8 a.m.-1:30 p.m. 5:30-11 p.m. |
| Hale Ikena | Closed | Closed | Closed | Closed |
| Nagorski Golf Course | 6:30 a.m.-1 p.m. | 6:30 a.m.-1 p.m. | 6:30 a.m.-6 p.m. | 6:30 a.m.-6 p.m. |
| Schofield Barracks (SB) | | | | |
| Schofield Bowling Center | 9 a.m.-3 p.m. | Closed | 3-10 p.m. | 9 a.m.-10 p.m. |
| Wheeler | | | | |
| The Hangar Entertainment Center | Closed | Closed | 6-10 p.m. | 6-10 p.m. |
| Leilehua Golf Course | 6:30 a.m.-1 p.m. | 6:30 a.m.-1 p.m. | 6:30 a.m.-6 p.m. | 6:30 a.m.-6 p.m. |
| Child & Youth Services | | | | |
| Aliamanu Military Reservation (AMR) | | | | |
| Child Development Center | 6 a.m.-6 p.m. | Closed | 6 a.m.-6 p.m. | 6 a.m.-6 p.m. |
| School Age Services | 6 a.m.-6 p.m. | Closed | 6 a.m.-6 p.m. | 6 a.m.-6 p.m. |
| Youth Center | 1-6 p.m. | Closed | 1-6 p.m. | 1-6 p.m. |
| Fort Shafter | | | | |
| Child Development Center | 6 a.m.-6 p.m. | Closed | 6 a.m.-6 p.m. | 6 a.m.-6 p.m. |
| School Age Services | 6 a.m.-6 p.m. | Closed | 6 a.m.-6 p.m. | 6 a.m.-6 p.m. |
| Youth Center | 1-6 p.m. | Closed | 1-6 p.m. | 1-6 p.m. |
| Helemano Military Reservation (HMR) | | | | |
| Child Development Center | 6 a.m.-6 p.m. | Closed | 6 a.m.-6 p.m. | 6 a.m.-6 p.m. |
| School Age Services | 6 a.m.-6 p.m. | Closed | 6 a.m.-6 p.m. | 6 a.m.-6 p.m. |
| Schofield Barracks (SB) | | | | |
| Bowen Child Development Center | 6 a.m.-6 p.m. | Closed | 6 a.m.-6 p.m. | 6 a.m.-6 p.m. |
| Petersen Child Development Center | 6 a.m.-6 p.m. | Closed | 6 a.m.-6 p.m. | 6 a.m.-6 p.m. |
| Child Development Center | 6 a.m.-6 p.m. | Closed | 6 a.m.-6 p.m. | 6 a.m.-6 p.m. |
| School Age Services | 6 a.m.-6 p.m. | Closed | 6 a.m.-6 p.m. | 6 a.m.-6 p.m. |
| Youth Center | 1-6 p.m. | Closed | 1-6 p.m. | 1-6 p.m. |
| Parent Central Services | 8 a.m.-5 p.m. | Closed | 8 a.m.-5 p.m. | 8 a.m.-5 p.m. |
| Family Child Care | 8 a.m.-5 p.m. | Closed | 8 a.m.-5 p.m. | 8 a.m.-5 p.m. |
| School Liaison Office | 8 a.m.-5 p.m. | Closed | 8 a.m.-5 p.m. | 8 a.m.-5 p.m. |
| Youth Sports Office | 8 a.m.-5 p.m. | Closed | 8 a.m.-5 p.m. | 8 a.m.-5 p.m. |



MWR

Facility Holiday Hours



| FACILITIES | DEC. 30 MONDAY | DEC. 31 TUESDAY | JAN. 1 WEDNESDAY | JAN. 2 THURSDAY |
|--|---|-----------------------|---------------------|---|
| Community Recreation | | | | |
| Aliamanu Military Reservation (AMR) | | | | |
| AMR Physical Fitness Center | 5 a.m.-8:30 p.m. | 5 a.m.-1 p.m. | Closed | 5 a.m.-8:30 p.m. |
| AMR Pool | Closed | Closed | Closed | Closed |
| Fort Shafter (FS) | | | | |
| FS Library | 10 a.m.-3 p.m. | 10 a.m.-3 p.m. | Closed | 10 a.m.-5 p.m. |
| FS Outdoor Recreation Center | Closed | Closed | Closed | Closed |
| FS Physical Fitness Center | 5 a.m.-7 p.m. | 5 a.m.-1 p.m. | Closed | 5 a.m.-7 p.m. |
| Helemano Military Reservation (HMR) | | | | |
| HMR Physical Fitness Center | 5 a.m.-8:30 p.m. | 5 a.m.-1 p.m. | Closed | 5 a.m.-8:30 p.m. |
| HMR Pool | Closed | Closed | Closed | Closed |
| Schofield Barracks (SB) | | | | |
| Health & Fitness Center | 5 a.m.-8:30 p.m. | 5 a.m.-1 p.m. | Closed | 5 a.m.-8:30 p.m. |
| Martinez Physical Fitness Center | 5 a.m.-8 p.m. | 5 a.m.-1 p.m. | Closed | 5 a.m.-8 p.m. |
| Richardson Pool | 6-9 a.m. (Morning PT) | Closed | Closed | 6-9 a.m. (Morning PT) 11 a.m.-6 p.m. |
| SGT Yano Library | 10 a.m.-3 p.m. | 10 a.m.-3 p.m. | Closed | 10 a.m.-5 p.m. |
| SB Arts & Crafts Center | Closed | Closed | Closed | 10 a.m.-4 p.m. |
| SB Auto Skills Center | Closed | 11:30 a.m.-5 p.m. | Closed | 11:30 a.m.-7 p.m. |
| SB Leisure Travel Services | 9 a.m.-4 p.m. | 9 a.m.-4 p.m. | Closed | 9 a.m.-4 p.m. |
| SB Outdoor Recreation Center | Closed | 8:30 a.m.-5 p.m. | Closed | 8:30 a.m.-5 p.m. |
| Tropics Recreation Center | 8 a.m.-6 p.m. | 8 a.m.-4 p.m. | Closed | 8 a.m.-6 p.m. |
| Tripler Army Medical Center (TAMC) | | | | |
| TAMC Physical Fitness Center | 5 a.m.-7:30 p.m. | 5 a.m.-1 p.m. | Closed | 5 a.m.-7:30 p.m. |
| TAMC Pool | 6-9 a.m. (Morning PT) 11 a.m.-6 p.m. | 6-9 a.m. (Morning PT) | Closed | 6-9 a.m. (Morning PT) 11 a.m.-6 p.m. |
| Wheeler | | | | |
| Wheeler Physical Fitness Center | 5 a.m.-8:30 p.m. | 5 a.m.-1 p.m. | Closed | 5 a.m.-8:30 p.m. |
| Other | | | | |
| Army Community Service | 7:30 a.m.-4:30 p.m. | 7:30 a.m.-4:30 p.m. | Closed | 7:30 a.m.-4:30 p.m. |
| Piilaau Army Recreation Center Reservation | 8:30 a.m.-5 p.m. | 8:30 a.m.-5 p.m. | 8 a.m.-5 p.m. | 8:30 a.m.-5 p.m. |
| Kennels | 10 a.m.-2 p.m. | 10 a.m.-2 p.m. | Closed | 10 a.m.-2 p.m. |

| FACILITIES | DEC. 30 MONDAY | DEC. 31 TUESDAY | JAN. 1 WEDNESDAY | JAN. 2 THURSDAY |
|--|---------------------------------|--------------------|---------------------|--------------------|
| Business Operations | | | | |
| Fort Shafter (FS) | | | | |
| Fort Shafter Bowling | 8 a.m.-1:30 p.m. 5:30-9 p.m. | 8 a.m.-3 p.m. | Closed | 3-9 p.m. |
| Hale Ikena | 5:30-11 p.m. | Closed | Closed | Closed |
| Nagorski Golf Course | Closed | 6:30 a.m.-6 p.m. | 6:30 a.m.-6 p.m. | 6:30 a.m.-6 p.m. |
| Schofield Barracks (SB) | | | | |
| Schofield Bowling Center | 9 a.m.-10 p.m. | 9 a.m.-3 p.m. | Closed | 3-10 p.m. |
| Wheeler | | | | |
| The Hangar Entertainment Center | 6-10 p.m. | 7 p.m.-1 a.m. | Closed | Closed |
| Leilehua Golf Course | 6:30 a.m.-6 p.m. | 6:30 a.m.-6 p.m. | 6:30 a.m.-6 p.m. | 6:30 a.m.-6 p.m. |
| Child & Youth Services | | | | |
| Aliamanu Military Reservation (AMR) | | | | |
| Child Development Center | 6 a.m.-6 p.m. | 6 a.m.-6 p.m. | Closed | 6 a.m.-6 p.m. |
| School Age Services | 6 a.m.-6 p.m. | 6 a.m.-6 p.m. | Closed | 6 a.m.-6 p.m. |
| Youth Center | 1-6 p.m. | 1-6 p.m. | Closed | 1-6 p.m. |
| Fort Shafter | | | | |
| Child Development Center | 6 a.m.-6 p.m. | 6 a.m.-6 p.m. | Closed | 6 a.m.-6 p.m. |
| School Age Services | 6 a.m.-6 p.m. | 6 a.m.-6 p.m. | Closed | 6 a.m.-6 p.m. |
| Youth Center | 1-6 p.m. | 1-6 p.m. | Closed | 1-6 p.m. |
| Helemano Military Reservation (HMR) | | | | |
| Child Development Center | 6 a.m.-6 p.m. | 6 a.m.-6 p.m. | Closed | 6 a.m.-6 p.m. |
| School Age Services | 6 a.m.-6 p.m. | 6 a.m.-6 p.m. | Closed | 6 a.m.-6 p.m. |
| Schofield Barracks (SB) | | | | |
| Bowen Child Development Center | 6 a.m.-6 p.m. | 6 a.m.-6 p.m. | Closed | 6 a.m.-6 p.m. |
| Petersen Child Development Center | 6 a.m.-6 p.m. | 6 a.m.-6 p.m. | Closed | 6 a.m.-6 p.m. |
| Child Development Center | 6 a.m.-6 p.m. | 6 a.m.-6 p.m. | Closed | 6 a.m.-6 p.m. |
| School Age Services | 6 a.m.-6 p.m. | 6 a.m.-6 p.m. | Closed | 6 a.m.-6 p.m. |
| Youth Center | 1-6 p.m. | 1-6 p.m. | Closed | 1-6 p.m. |
| Parent Central Services | 8 a.m.-5 p.m. | 8 a.m.-5 p.m. | Closed | 8 a.m.-5 p.m. |
| Family Child Care | 8 a.m.-5 p.m. | 8 a.m.-5 p.m. | Closed | 8 a.m.-5 p.m. |
| School Liaison Office | 8 a.m.-5 p.m. | 8 a.m.-5 p.m. | Closed | 8 a.m.-5 p.m. |
| Youth Sports Office | 8 a.m.-5 p.m. | 8 a.m.-5 p.m. | Closed | 8 a.m.-5 p.m. |



OFF POST

O'ahu Holiday Events



21st Annual Hawai'i Bowl
Clarence T.C. Ching Athletics Complex
December 24, 2024
3:00pm - 6:30pm

[GOHAWAII.COM/
ISLANDS/OAHU/EVENTS](https://gohawaii.com/islands/oahu/events)



Letters to Big Santa
Ala Moana Center
Level 3, Mauka Wing
Nov. 9 to Dec. 24

[HONOLULUMAGAZINE.COM/
HOLIDAY-EVENTS/](https://honolulumagazine.com/holiday-events/)



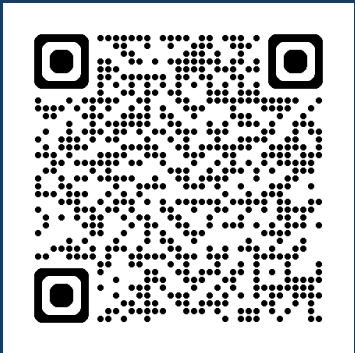
'Twas the Light Before Christmas
Hawaii Convention Center
Open Through Dec. 30

[ALOHAIMMERSIVE.COM/](https://alohaimmersive.com/)

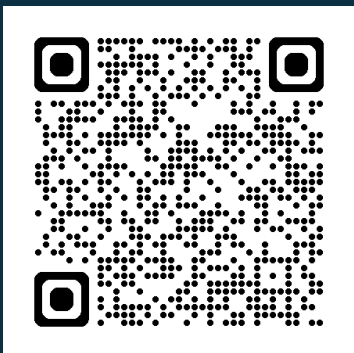
OFF POST Event Calendars



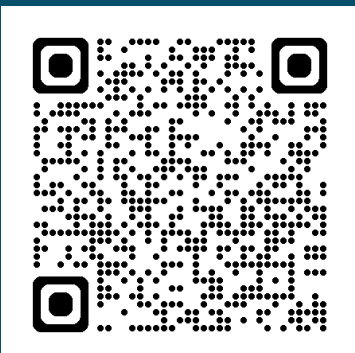
[GOHAWAII.COM](https://gohawaii.com)



[HONOLULUMAGAZINE.COM](https://honolulu magazine.com)



[BEST-OF-OAHU.COM](https://best-of-oahu.com)



BETTER OPPORTUNITIES FOR SINGLE SOLDIERS (BOSS)

Designated Driver Program

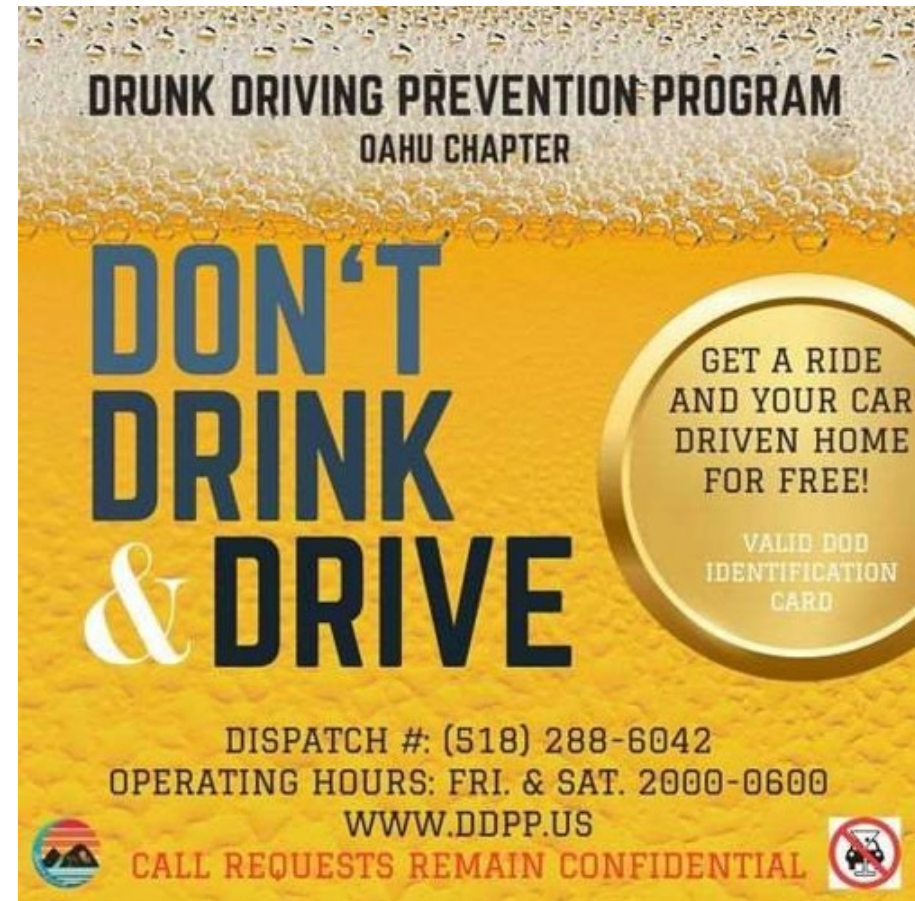
**GET A RIDE AND
YOUR CAR DRIVEN HOME
FOR FREE!!**

Call dispatch at 518-288-6042

Operating hours: Fri-Sat, 8:00 pm-6:00 am

www.ddpp.us

Call request remain confidential





THANK YOU.

home.army.mil/hawaii

DEPT OF PUBLIC WORKS ENVIRONMENTAL Recycling & Bulk Waste

CARDBOARD RECYCLING

Schofield Recycling Center

171 Palapalai Cir, Schofield Barracks, HI 96857
808-4283158

In response to anticipated increase in cardboard over the holidays, the **Army Recycling Center** has increased capacity for cardboard drop-offs.

1. Remove all packing materials and tape
2. Flatten boxes
3. Drop off cardboard at the Army Recycling Center,
 - Mon-Fri: 7:30 am-4:00 pm
 - Sat/Sun: 24 hrs/day, utilize cardboard drop-off container outside main entrance

CORRECT 



INCORRECT 



DEPT OF PUBLIC WORKS ENVIRONMENTAL Recycling & Bulk Waste

WOODEN PALLETS IN GOOD CONDITION

Army Recycling Center: Pallet Re-Use Program

- Call ahead to check on space availability for drop offs
- Check inventory for picking up pallets for re-use

DLA: Work with Supply (SSA) to turn in Pallets to DLA/Follow Turn-in procedures

- DLA Pearl Harbor will accept up to 100 pallets/day
- Abel Castaneda; abel.Castaneda@dla.mil; 808-786-2085; 808-282-7186
- Brett Fabre: brett.fabre@dla.mil; 808-786-2171; 808-266-0390

SCRAP WOOD/PALLETS UNUSABLE

- Accepts up to 10 scrap pallets/day (call ahead)
- More than 10? Request a temporary dumpster from DPW Services Contract Branch: Leonard Webster, 808-864-0932 (*GPC card required/rental fee charged*)



DEPT OF PUBLIC WORKS ENVIRONMENTAL Recycling & Bulk Waste

BULK WASTE

Army Recycling Center **does not** accept bulk waste (furniture, mattresses, trash)

Illegal dumping issues (furniture, mattresses)?

Contact DPW Services, Contract Branch, 808-864-0932 to coordinate a bulk waste pick-up

DOD Furniture and equipment must be turned in through Supply (SSA)

Bulk items Island Palm Communities Residents:

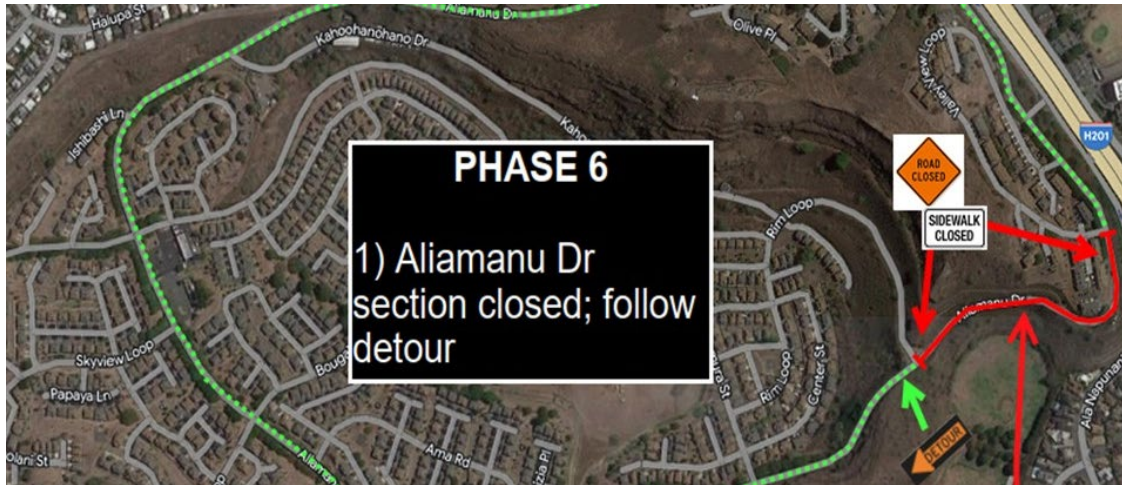
- Residents have access to curbside bulk pick-up service
- Bulk items should be placed curbside **after 5 pm** the evening prior to scheduled trash pick-up day.

Dumping of bulk waste at unauthorized locations is a punishable offense (UCMJ Articles 92).

- Citations will be issued if proper evidence of illegal dumping is provided to Military Police



SCHEDULED DETOURS, PARKING & CLOSURES



Ongoing Scheduled Road Closures, Detours Aliamanu Military Reservation (AMR)

- Dec. 1 through 31 Jan. 31, 2025, between 8:30 a.m. and 3:30 p.m. No work will be performed on weekends or Federal Holidays.
- Aliamanu Drive, from Rim Loop to Valley View and Area residents and commuters



Ongoing Scheduled Road and Parking Closure Fort Shafter

- Starting Dec 9, 2024 - Aug 1, 2026
- Rand parking closures on Radar Hill Rd and Yasutake Rd.

DIRECTORATE OF HUMAN RESOURCES

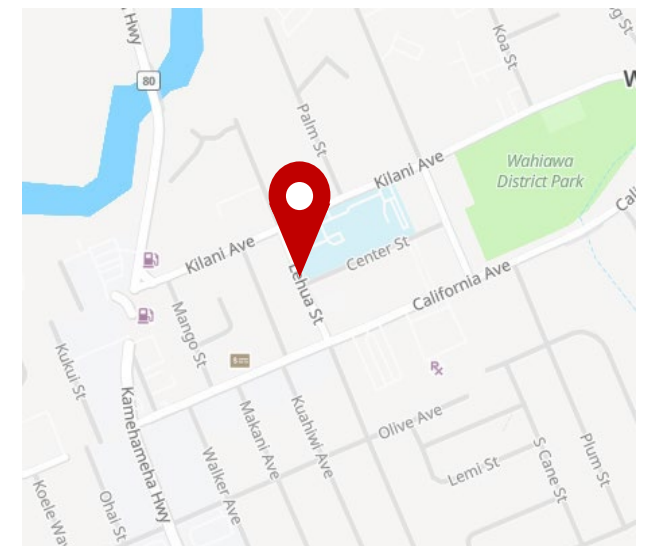
Post Office Relocation

WARNO! (Date TBD)

Following the Holiday mailing season, the Schofield Barracks U.S. Postal Service (USPS) team **will temporarily relocate from Building 258 on Foote Road to the Wahiawa Post Office Facility at 115 Lehua St.** while the building undergoes repairs and modernization so we can better serve you

Additionally, our Official Mailroom team will be relocating to Building 2800 on Lyman Road and will continue processing Official and barracks mail while this long overdue work is being completed

Please plan accordingly and we apologize for any inconvenience this may cause



HUI 'O NA WAHINE Schofield Barracks Spouses Club

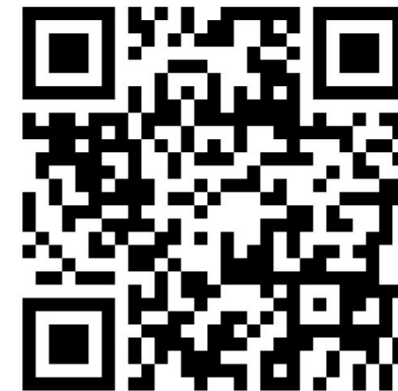
An all-rank spouses club supporting our local community through financial assistance grants and scholarships from revenue from the Thrift Shop and community events.

Scholarship is eligibility to Spouses and dependent children of military personnel (active, reserve, retired, DOD civilians, and deceased) assigned to or residing in Oahu, HI.

For Community Grant & Scholarship Requirements and Applications, please visit:

www.schofieldspousesclub.com

Applications Open: November 1 - February 1



OFFICE OF THE STAFF JUDGE ADVOCATE

Drunk Driving



BE SAFE AND SMART!

**A LETTER OF REPRIMAND FOR A DUI
MAY BE THE LEAST OF YOUR WORRIES!**

**You will be issued a
General Office Memorandum of Reprimand if you:**

- Are convicted by a court, or receive NJP,
- for an offense of drunk/impaired driving;
- **Refuse to take, or failure to complete field sobriety tests;**
- **Driving or being in physical control of a motor vehicle with a BAC of .08 or higher on or off post, irrespective of other charges; or**
- Driving or being in physical control of a motor vehicle on or off the installation when lawfully conducted chemical tests reflect the presence of illegal drugs



OFFICE OF THE STAFF JUDGE ADVOCATE

Harris Jewelry Settlement

Harris Jewelry Settlement

Deadline to File:
21 DEC 2024

**File if you did any business with
Harris Jewelry**



OFFICE OF THE STAFF JUDGE ADVOCATE

Holiday Hours

CONSOLIDATED LEGAL CENTER

Office of the Staff Judge Advocate, Client Services
278 Aleshire Ave., Bldg. 2037
Schofield Barracks HI 9685
808-787-3071 ← **New Phone Number!**

Legal assistance, special victims' counsel, and tort claims.

Learn More About Our Services



Legal Service Hours

| | |
|---------------------|-----------------|
| Monday – Wednesday: | 9:00 am–4:30 pm |
| Thursday: | 1:00 pm–4:30 pm |
| Friday: | 9:00 pm–2:00 pm |

Closed all federal and training holidays

Holiday Hours:

| | |
|----------------------|------------------|
| 19 Dec: | 9:00 am–4:30 pm |
| 23 Dec– 3 Jan (HBL): | 9:00 am–12:00 pm |



ISLAND PALM COMMUNITIES

Upcoming Events

December

12-19: North Here Comes Santa Parade

12-19: Cocoa, Cookies, and Creativity @ Aliamanu

January

1/8: Canby Community Center Grand Opening

1/14: HMR Chat with the Chief

1/17: Lego Day Brick Party @ HMR

1/18: Quarterly Community Yard Sale

1/21: Color a Calendar Craft @ 1LT Brostrom

February

2/22: IPC Child Safety Fair @ Aliamanu

TBA: Puppy Love PAWTies

TBA: Galentine's Movie Night!

Ongoing Fitness Classes

New: SHiNE DANCE, Xtreme Hip Hop, Yoga



Would you like to volunteer at our events?

Contact events@ipchawaii.com

ISLAND PALM COMMUNITIES

Bulk Refuse Reminder

Island Palm Community's refuse/recycling collections and bulk pick-up services are provided to residents weekly on designated days.

Here are some important notes to remember:

- Refuse and recycling cans and bulk items should be placed curbside, not earlier than 5 p.m., the evening prior to pick-up.
- Please do not place any trash in locations/containers/bins/dumpsters other than the refuse or recycling receptacles assigned to your home.
- Please refrain from placing refuse and bulk trash items in commercial refuse containers or dumpsters.
- **Both live and artificial Christmas trees can be placed at the curb on your scheduled refuse collection day.**

Section **8.5** of the IPC Resident guide is a great resource for questions, as well as your community center.



ISLAND PALM COMMUNITIES

Holiday Decorations Safety Tips

Inspect Lights

Check for damaged wires or bulbs before use.

Avoid Overloading Outlets

Use surge protectors and follow wattage limits.

Secure Decorations

Anchor outdoor items to prevent wind damage.

Use Flame-Resistant Materials

Choose fire-safe decorations, especially near candles.

Ladder Safety

Always use a sturdy ladder and have someone nearby.

Turn Off When Unattended

Unplug lights and decorations when leaving or sleeping.

Enjoy a safe and cheerful holiday season!



ARMED SERVICES YMCA Upcoming Events

Monthly Ohana Open Market Jan 27, Feb 24, and Mar 24

Visit our website to register for a time slot
www.asymcahi.org

If you can't make it, visit our WAAF ASYMCA
Marketplace



EVERYTHING YOUR FAMILY NEEDS

AT THE MARKETPLACE: The Marketplace offers pantry and grocery staples such as baby formula, diapers, frozen foods, juice, milk, and eggs, child and adult snacks, and canned goods at no cost to military families in need. Families may visit twice a month.

AT 'OHANA OPEN MARKET: 'Ohana Open Market is a monthly community food distribution. Available items change every month but usually include fruits, veggies, a variety of bread, dessert items, child and adult snacks, and much more.

WAAF 2025 'OHANA OPEN MARKET DATES

WAAF 'Ohana Open Market is usually held on the 4th Monday of the month from 12:30 – 2:30pm on Schofield Barracks at 241 Hewitt St., Bldg. 1283

| | | | |
|--------|--------|--------|--------|
| JAN 27 | FEB 24 | MAR 24 | APR 28 |
| MAY 19 | JUN 23 | JUL 28 | AUG 25 |
| SEP 22 | OCT 27 | NOV 24 | DEC 15 |

Interested in volunteering? Contact us. Let's set it up!

FIND A MARKETPLACE NEAR YOU

Branches open Mon – Fri, 8am – 3pm

★ **Joint Base Pearl Harbor-Hickam**
100 McChord Street, Building 1859
(808) 448-1972

★ **Marine Corps Base Hawaii**
455 Bingham Way
(808) 254-4719

★ **Wheeler Army Airfield**
1262 Santos Dumont Avenue
(808) 624-5645

ARMED SERVICES YMCA OF HAWAII | WWW.ASYMCAHI.ORG | (808) 624-5645

STAY CONNECTED ON SOCIAL MEDIA @ASYMCAHAWAII ON FACEBOOK & INSTAGRAM



ARMED SERVICES YMCA Upcoming Events

Operation Holiday Joy

- Over 13,000 donations for 2024!
- Mahalo to The Soldiers Support Center
- Mahalo to Daniel K, Solomon and Wheeler Elementary!

Our Programs

- ELR (Early learners Readiness)
- PPP (Parent Participation Preschool)



Armed Services YMCA Hawai'i – WAAF Branch

Enhancing the lives of military members and their families in spirit, mind and body, through programs relevant to the unique challenges of military life

Early Childhood Education Programs: Operation Little Learners (OLL) and Parent Participation Preschool (PPP) guides children through the first few years of their lives and sets them up for success in kindergarten and beyond. OLL focuses on adapting to new environments and playing with new friends, and PPP encourages a love for exploration and learning in a fun and nurturing academic setting.

Operation Hero: Operation Hero is an after-school semester program in partnership with local schools designed to address the unique challenges of being a child in a military family. The program is designed for children in grades 2 to 6.

Spring Break, Summer Break, Fall Break Enrichment Camps: Enrichment camps are week-long, theme-based experiences designed for children ages 7–12. Prices and times vary.

Parents Night Out: ASYMCA hosts Parents Night Out once a month on a Friday evening at the JBPBH and MCBH Branches. Drop your kids off with us for a few hours and enjoy a night to yourself.

ASYMCA Marketplace: Free groceries! ASYMCA Marketplace (formerly known as the Food Pantry) ensures military families have everything they need to keep bellies full and homes running smoothly. From groceries to laundry detergent, diapers to personal care items, the Marketplace has everything your family needs at no cost.

‘Ohana Open Market: ‘Ohana Open Market is a monthly community food distribution program. Once a month, in partnership with the Hawaii Foodbank, Armed Services YMCA Hawai'i provides free food, including fresh produce, for military families who live in and around WAAF and Schofield Barracks.

Children's Waiting Room: Children's Waiting Room (CWR) at the Tripler Army Medical Center. Staff at these locations provide a safe, healthy, and nurturing environment for healthy children, 6 weeks to 12 years, to wait while their parent or sibling is at a doctor's appointment. CWR is open to all branches of the military.

Operation Holiday Joy: A donation-based program for Thanksgiving and Christmas. Based on need, referral from command, and/or Branch Director discretion.

Operation Ride Home: A program for servicemembers E5 and below. Applicants tell us why they want to go home for the holidays. Selected participants receive roundtrip airfare to be with family during the holidays.

Emergency Financial Assistance: Based on need, referral from command, or Executive Director discretion.

ARMED SERVICES YMCA HAWAII' AT WHEELER ARMY AIRFIELD

Phone: (808) 624-5645 | Email: wheeler@asymcahi.org | Web: www.ASYMCAHI.org | Social Media: @ASYMCAHawaii

Early Childhood Education Programs

Operation Little Learners (Ages 0-3)

Early Learning Readiness (ELR) is for children and their caregiver. This research-based program provides a structured learning environment that prepares your child for preschool, builds their confidence and social skills while providing you, your child's first teacher, the tools and support needed to ensure your child's success.

\$100/month

Parent Participation Preschool (Ages 3-5)

Home: This program is designed for children who are able to be without their parents. The focus of this program is letter recognition, counting to 10, writing skills, shapes, and colors. Parent participation is assigned on rotation, usually once a month during class time.

2 days: \$215/month ; 3 days: \$295/month

Hall: This program is designed for children who have graduated to sight words, counting to 20, writing words, 30 shapes, colors and beginning math. Parent participation is assigned on rotation, usually once a month during class time.

2 days: \$215/month ; 3 days: \$295/month



DEFENSE COMMISSARY AGENCY

Holiday Hours

In Observance of the Holiday

Christmas

Commissary Hours of Operation are:

| | |
|------------|---------------|
| Sunday: | 0800-2100 |
| Monday: | 0800-2100 |
| Tuesday: | 0800-1600 |
| Wednesday: | CLOSED |
| Thursday: | 0800-2100 |
| Friday: | 0800-2100 |
| Saturday: | 0800-2100 |

In Observance of the Holiday

New Years

Commissary Hours of Operation are:

| | |
|------------|---------------|
| Sunday: | 0800-2100 |
| Monday: | 0800-2100 |
| Tuesday: | 0800-1900 |
| Wednesday: | CLOSED |
| Thursday: | 0800-2100 |
| Friday: | 0800-2100 |
| Saturday: | 0800-2100 |



DEFENSE COMMISSARY AGENCY

Holiday Santa Hours

**SANTA CLAUS IS
COMING TO TOWN!**

Schofield Barracks Commissary

22 Dec, 12:00 pm-4:00 pm



DEFENSE COMMISSARY AGENCY

Join our team!

The Defense Commissary Agency is Hiring!

- Full time and part time positions with flexible scheduling
- 11 paid holidays
- Paid annual and sick leave
- Retirement saving and investment plans
- Global career growth opportunities

Pursue your PASSION with THE grocery provider of choice.
Learn more about career opportunities at
www.commissaries.com/our-agency/careers-with-deca

**SCHOFIELD
BARRACKS'
DECA IS HIRING!**

Apply on USAJobs!



ARMY & AIR FORCE EXCHANGE

Doing Business with Schofield Exchange

Kiosks, Storefronts, and Event Setups are available.

Must complete a Source List Application:

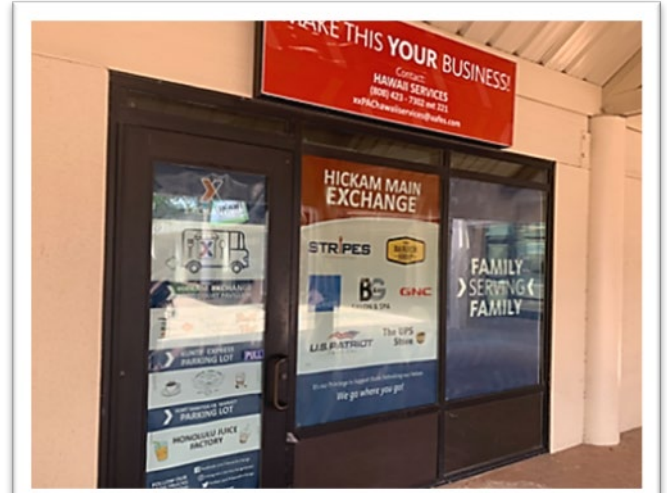
- Complete online: <https://partners.aafes.com/sourcelist/> or
- Print:
<https://www.aafes.com/Images/doingbusiness/sourcelist-sdv2.pdf>
- **Applications are kept on file for one year. If expired, you will need to complete a new application.**

For more information, please contact:

Hawaii Services Office

808.423.7302 ext. 3

xxPacHawaiiServices@aafes.com



ARMY & AIR FORCE EXCHANGE New Food Truck Partners

SCHOFIELD

Dragon Wagon

- Offering gourmet hot dogs and hoagies.
- Located in the PX parking lot Monday- Friday 1030-1500

Souloha

- Come grab your loaded mac bowls
- **Opened 16 December 2024 in the BK/Popeyes parking lot**
- Monday- Friday 1030-1400

WHEELER

Irie Jerk

- Jamaican food
- Open Monday – Friday from 1030-1400
- Bldg. 102 until December 20th 2024



ARMY & AIR FORCE EXCHANGE

Holiday Events

Holiday Pet Photo Contest Online Event

Dec 1st to Dec 31st

Show off your festive furry friends
for a chance to win \$3,000 in shop
my exchange prizes!

Send a photo of your pet to
<https://aafes.media/3ZzsuWp>



ARMY & AIR FORCE EXCHANGE Holiday Hours

Hours of Operation

Monday through Sunday
0800 - 2000



ARMY & AIR FORCE EXCHANGE

January Deals



Quest Bars

Item of the Month

2 / \$4.75



Snack Avenue

2 for \$3.50

Mix-n-Match roller
grill items



Frito Lay

Combo Deal

Buy 2 for
\$12 Doritos

ARMY MEDICINE

Desmond Doss & Tripler Army Medical Center

Desmond Doss Health Clinic EFMP Resources:

usarmy.tripler.medcom-tamc.list.pe-efmp@health.mil


NEW! EFMP Case Coordinator Office at Desmond Doss, a/o 1 AUG 2024

- Location: BLDG G, 1st floor, Room 115 (inside Immunizations Clinic)
- Hours: Tuesday, Wednesday, Thursday: 0800-1500, Friday: by appointment only



DESMOND T. DOSS HEALTH CLINIC

SCHOFIELD BARRACKS



Patient Advocate/Customer Relations
For assistance call 808-433-8504 (voice mail available)
Learn more online: <https://desmond-doss.tricare.mil/Patient-Resources/Customer-Service>

Access Care Online via MHS GENESIS
Use the MHS GENESIS Patient Portal to schedule appointments, send messages to your provider, view test results, order medication refills, and more!
my.mhsgenesis.health.mil

Nurse Advice Line
You can speak directly to a health professional using the Military Health System Nurse Advice Line to assist you with your health concern.
1-800-TRICARE (874-2273)

How are we doing?
You can submit an Interactive Customer Evaluation (ICE) comment any time online.
<https://ice.dhsa.mil/>
The Joint Outpatient Experience Survey (JOES) is randomly to patients to ask about care received.

Learn more!
You can learn more about the DDHC on our website.
desmond-doss.tricare.mil
Or connect with us on Facebook.
facebook.com/desmond.t.doss.healthclinic


**New to Schofield Barracks
DDHC Walking Tour**




When: Open to all TRICARE beneficiaries receiving services at DDHC - including active duty, dependents, retirees, etc.
Where: Second Wednesday of every month, 8-9 a.m.
Where: Meet in front of Urgent Care Center (BLDG 664/6)

[Follow](#) [SIGN UP](#)





DESMOND T. DOSS HEALTH CLINIC



Urgent Care Center

Desmond T. Doss Health Clinic
Schofield Barracks, Hawaii

Location: Bldg. H/584, First Floor

Hours: 7 a.m. to 6:30 p.m. (except Wednesdays)
Wednesdays: 8:30 a.m. to 6:30 p.m. Closed
Federal Holidays


Phone: (808) 433-8850

What is an Urgent Care Center?


Urgent Care services treat non-life-threatening health issues that require immediate attention, such as sprains, the flu, colds, back pain, skin rashes and other common illnesses.

If you're unsure about whether you need urgent care, contact the Military Health System Nurse Advice Line to speak to a registered nurse.

Scan to learn more about the Desmond T. Doss Health Clinic Urgent Care Center




Scan to Navigate



Urgent Care Center


Parking Garage 675 near PHARMACY entrance



New Check-In Procedure:

Are you going to: • 2nd Brigade Combat Team • 3rd Brigade Combat Team


(located near pharmacy entrance)
Soldiers assigned to 2nd Combat Brigade and 3rd Combat Brigade must report to the Consolidated Check-In Desk, located on the first floor of Bldg. D. Please collect a ticket from the Q-Flow check-in machine. All patients must have a ticket prior to any appointment, walk-in service, or general inquiry. This includes Sick Call. *ad other patients may proceed directly to your clinic.




Using Q-Anywhere Is Easy:

1. Scan the QR code or text "Get in line" to (844) 616-2556.
2. Follow the prompts and enter your information.
3. Receive a text message when your prescriptions are ready.
4. After receiving the text come to the pharmacy to pick up your prescriptions.

Scan to see the flyer DDHC on your phone and more...



Click on any QR code to activate link!

SCAN ME! 

TEXT "Get in Line" to (844) 616-2556

Updated 10/24/2024



ARMY MEDICINE

Desmond Doss & Tripler Army Medical Center

MHS GENESIS PATIENT PORTAL

You can book your routine primary care medical appointments online and refill prescriptions!

Patients enrolled in a military treatment facility on Oahu can now use the MHS Genesis Patient Portal to schedule a new appointment or initiate a medication refill.

<https://patientportal.mhsgenesis.health.mil>



Follow us: @Desmond.T.Doss.HealthClinic @TriplerArmyMedicalCenter



- ☐ Bicycles and motorcycles are small and difficult to see
- ☐ Young people lack riding inexperience
- ☐ Traffic is congested on our installations
- ☐ People often do not clear crosswalk
- ☐ People often enter road through closely parked vehicle (not a crosswalk)
- ☐ Drivers of automobiles often split their attention

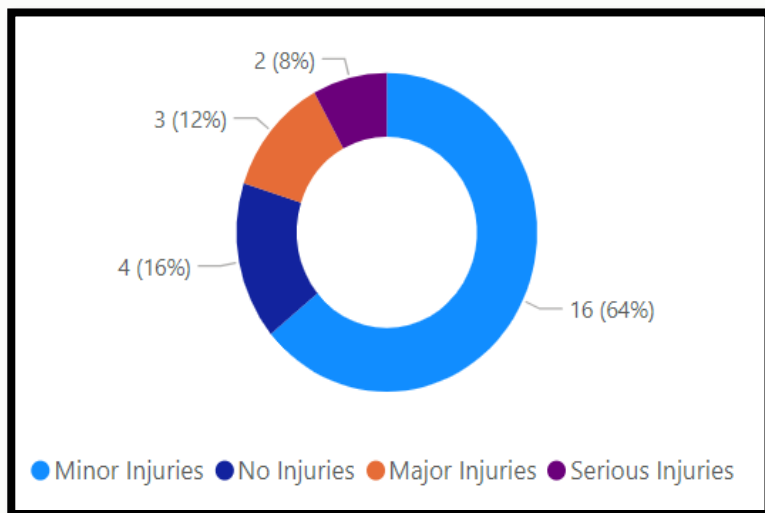
Distracted Driving KILLS

**Properly fitted helmet is the
most important piece of safety gear
IAW The National Safety Counsel**

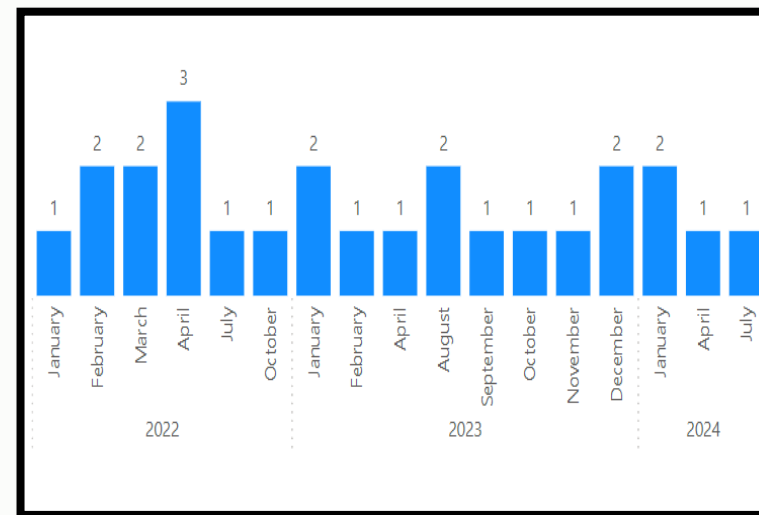


Bike/Cycle Accident Breakdown

Injuries Description

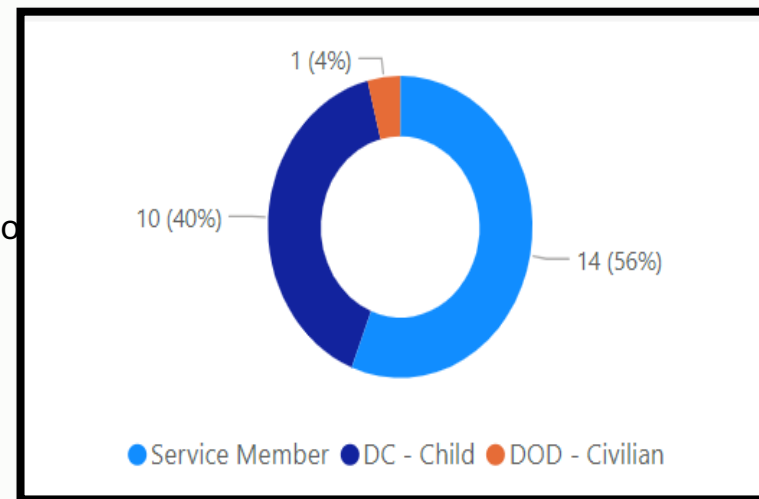


By Month



- ☐ Bicycles and motorcycles are small and difficult to see
- ☐ Young people lack riding inexperience
- ☐ Traffic is congested on our installations
- ☐ People often do not clear crosswalk
- ☐ People often enter road through closely parked vehicle (not a crosswalk)
- ☐ Drivers of automobiles often split their attention

Status



Distracted Driving KILLS

