



DEPARTMENT OF THE ARMY
U.S. ARMY INSTALLATION MANAGEMENT COMMAND-PACIFIC
HEADQUARTERS, UNITED STATES ARMY GARRISON, HAWAII
745 WRIGHT AVENUE, BUILDING 107, WHEELER ARMY AIRFIELD
SCHOFIELD BARRACKS, HAWAII 96857-5000

AMIM-HWG-ZA

MEMORANDUM FOR All Military Personnel, Department of Defense (DoD) Civilian Employees and Contractors within United States Army Garrison, Hawaii (USAG-HI) Installations

SUBJECT: Policy Memorandum USAG-HI-42, Ammunition and Explosives Routes for Entry Into or Through Areas of Schofield Barracks and Wheeler Army Airfield

1. References:

- a. AR 385-10, The Army Safety Program, 24 Feb 17.
- b. DA Pam 385-64, Ammunition and Explosives Safety Standards, RAR, 10 Oct 13.
- c. IMCOM Regulation 5-13, Installation Ammunition Support, Appendix H, Designated Ammunition and Explosives Transportation Routes, 7 Feb 08.

2. Purpose. To provide routes and guidance for transporting ammunition or explosives on Schofield Barracks and Wheeler Army Airfield.

3. Applicability. This policy memorandum applies to all operators of vehicles transporting ammunition or explosives on the installation.

4. All vehicles transporting ammunition or explosives must be compliant with all U.S. Department of Transportation and Department of Defense regulations and must follow the following route and other restrictions (as shown on the enclosed Route Maps):

- a. Driving and parking in the housing areas (internal side streets) and parking areas for Army & Air Force Exchange Service (AAFES) retail facilities (post exchange, shoppette, fast food, gas station, retail vendor establishments, etc.), commissary, post office and Morale, Welfare and Recreation facilities is prohibited.

- b. From the Wheeler Ammunition Supply Point (WASP) to the exit at Kawamura Gate, vehicles will use Latchum Road to Lauhala Road to Kawamura Gate (reverse route is authorized).

- c. From the WASP to Schofield Barracks ranges, vehicles will use Latchum Road to Airdrome Road to Kunia Gate, then cross Kunia Road and enter through Lyman Gate. From Lyman Gate, vehicles will use Lyman Road to Mellichamp Road to Trimble Road

AMIM-HWG-ZA

SUBJECT: Policy Memorandum USAG-HI-42, Ammunition and Explosives Routes for Entry Into or Through Areas of Schofield Barracks and Wheeler Army Airfield

to Beaver Road. (Trimble Road east of Beaver Road is prohibited). Use Trimble Road west of Beaver Road to access all other ranges (reverse route is authorized).

d. To enter or exit through McNair Gate, vehicles must use McMahon Road to Ayres Avenue to Beaver Road (reverse route is authorized).

5. No vehicles transporting explosives will be left unattended at any time.

6. Vehicles transporting ammunition and explosives will not be parked on the side of the road along the explosives route(s) at any time.

7. This policy supersedes Policy Memorandum USAG-HI-42, dated 7 June 21 and remains in effect until rescinded or superseded in writing.

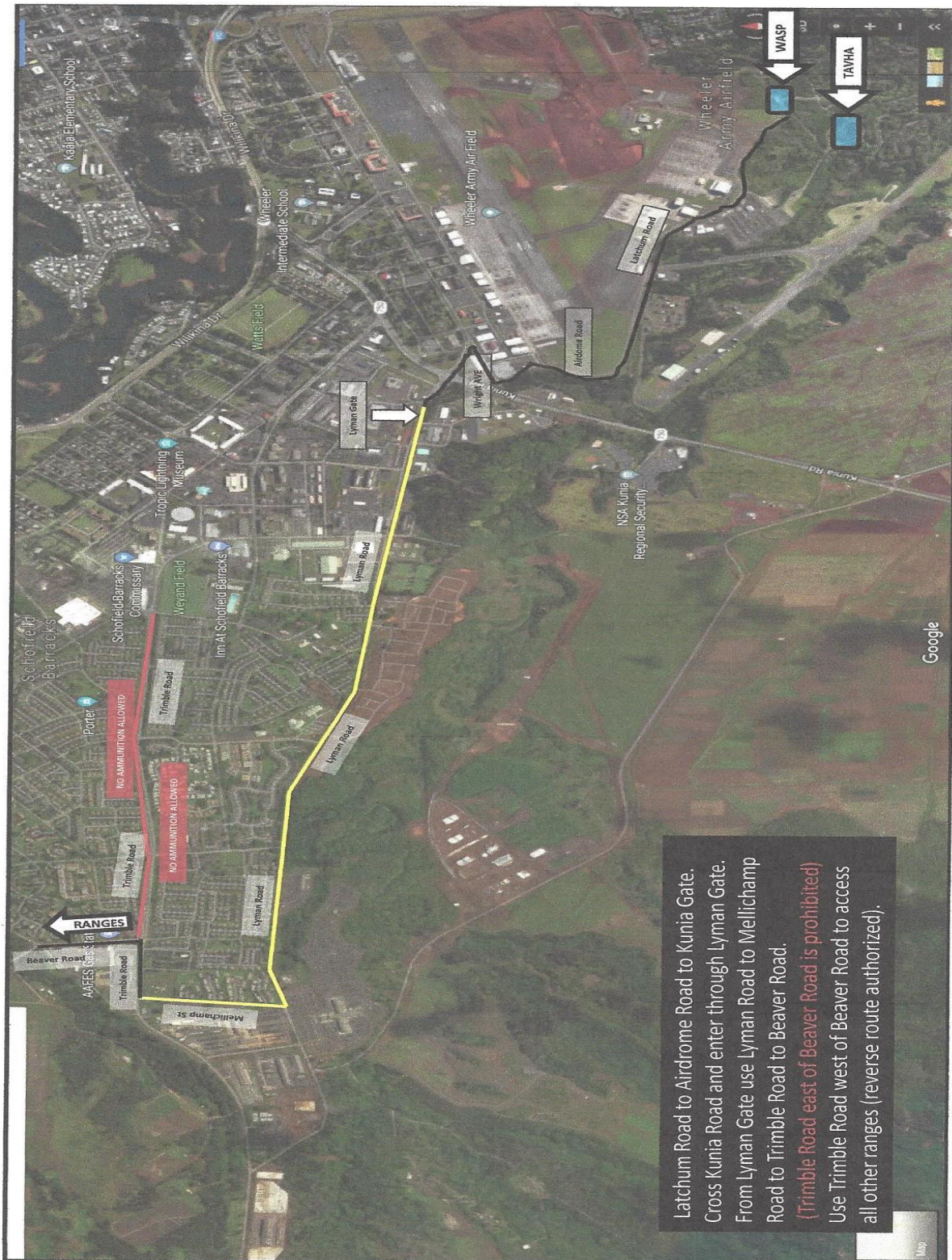
8. Questions regarding this policy should be directed to the Garrison Safety Manager at (808) 656-1166 or usarmy.wheeler.id-pacific.list.usag-hi-safety-office@army.mil.

STEVEN B. McGUNEGLE
COL, AR
Commanding

DISTRIBUTION
Electronic Media

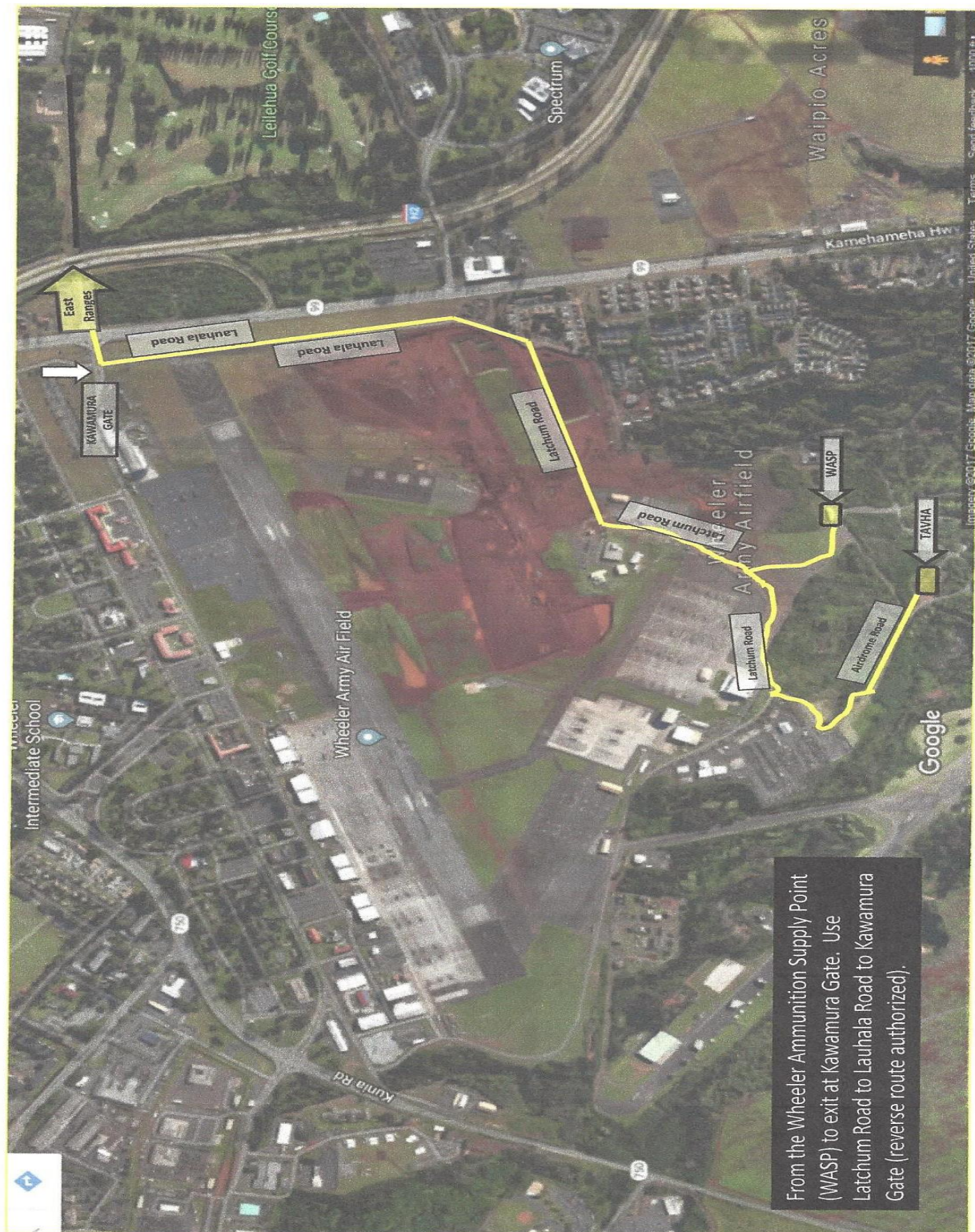
AMIM-HWG-ZA

SUBJECT: Policy Memorandum USAG-HI-42, Ammunition and Explosives Routes for Entry Into or Through Areas of Schofield Barracks and Wheeler Army Airfield



AMIM-HWG-ZA

SUBJECT: Policy Memorandum USAG-HI-42, Ammunition and Explosives Routes for Entry Into or Through Areas of Schofield Barracks and Wheeler Army Airfield



SUBJECT: Policy Memorandum USAG-HI-42, Ammunition and Explosives Routes for Entry Into or Through Areas of Schofield Barracks and Wheeler Army Airfield

