



SCOPING MEETING SCHOFIELD GENERATING STATION PROJECT ENVIRONMENTAL IMPACT STATEMENT



Agenda

- Welcoming Remarks
- Roles of Key Players Involved
- NEPA / HEPA Requirements
- Description of Project
- Questions and Answers
- Comments



SCOPING MEETING SCHOFIELD GENERATING STATION PROJECT ENVIRONMENTAL IMPACT STATEMENT



Proposed Project

Proposed Action

- The Army proposes to lease 10.3 acres of Army land at Schofield Barracks to the Hawaiian Electric Company for the construction and operation of a 50-megawatt (MW) power generation plant.

Purpose of the Proposed Action

- Enhance energy security at Schofield Barracks, Wheeler Army Airfield and Field Station Kunia
- Contribute to Army and Hawaiian Electric renewable energy goals
- Provide quick-starting facility to help maintain grid stability
- Contribute to grid reliability by providing a facility at a higher elevation away from coastlines
- Contribute to grid continuity in the event of a manmade threat by providing a physically secure facility on a military installation



SCOPING MEETING SCHOFIELD GENERATING STATION PROJECT ENVIRONMENTAL IMPACT STATEMENT



Energy Initiatives Task Force

- Project proponent on behalf of the Army
- Provides project support to USAG-HI



US Army Garrison Hawaii

- Project host and would be provided “first call to power” from the SGSP in the event of extended grid outages

Hawaiian Electric Company

- Lease land from the Army for the SGSP and seek easements from the Army and DLNR for transmission lines
- Finance, design, build, own, and operate the power plant and transmission lines

Department of Land and Natural Resources

- Responsible for state-owned lands over which the new transmission line would pass





SCOPING MEETING SCHOFIELD GENERATING STATION PROJECT ENVIRONMENTAL IMPACT STATEMENT



Who is the EITF?

- Established by the Secretary of the Army on September 15, 2011.
- The Energy Initiatives Task Force (EITF) serves as the central management office for partnering with Army installations to implement cost-effective, large-scale, renewable energy projects.
 - Projects equal to or greater than 10 MW.
 - Coordinates with installations for 1-10 MW opportunities.
 - Potential for projects that exceed Army requirements.



SCOPING MEETING SCHOFIELD GENERATING STATION PROJECT ENVIRONMENTAL IMPACT STATEMENT



Regulatory Framework

Federal Statute – National Environmental Policy Act (NEPA)

- Requires federal agencies to integrate environmental values into their decision making processes by considering the environmental impacts of their proposed actions and reasonable alternatives to those actions.

State Statute – Hawaii Environmental Policy Act (HEPA)

- Establishes a review system to ensure that environmental, social, and economic impacts of proposed projects are given appropriate consideration in State approvals and permitting process.

Joint NEPA / HEPA EIS will be prepared to meet the requirements of the National Environmental Policy Act and Hawaii Environmental Policy Act



SCOPING MEETING SCHOFIELD GENERATING STATION PROJECT ENVIRONMENTAL IMPACT STATEMENT



Public Notices

EISPN Published – January 8, 2014 (OEQC Environmental Bulletin)

NOI Published – January 17, 2014 (Federal Register)

Purpose of Public Notices

- Announce intent to prepare a Joint EIS
- Invite interested public to participate in scoping meetings
- Encourage oral and/or written comments
- Seek public input on the scope of topics to be studied

**Comments will be accepted if postmarked within the 45-day NEPA
Scoping Period from January 17 – March 2, 2014**



SCOPING MEETING SCHOFIELD GENERATING STATION PROJECT ENVIRONMENTAL IMPACT STATEMENT



Resource areas for consideration in the EIS:

- Cultural Resources
- Air Quality
- Water Resources
- Geology and Soils
- Land Use
- Biological Resources
- Traffic and Transportation
- Airspace Management
- Public Health and Safety
- Noise
- Hazardous Materials and Waste Management
- Visual Resources
- Socioeconomics
- Environmental Justice
- Protection of Children
- Utilities and Infrastructure



SCOPING MEETING SCHOFIELD GENERATING STATION PROJECT ENVIRONMENTAL IMPACT STATEMENT

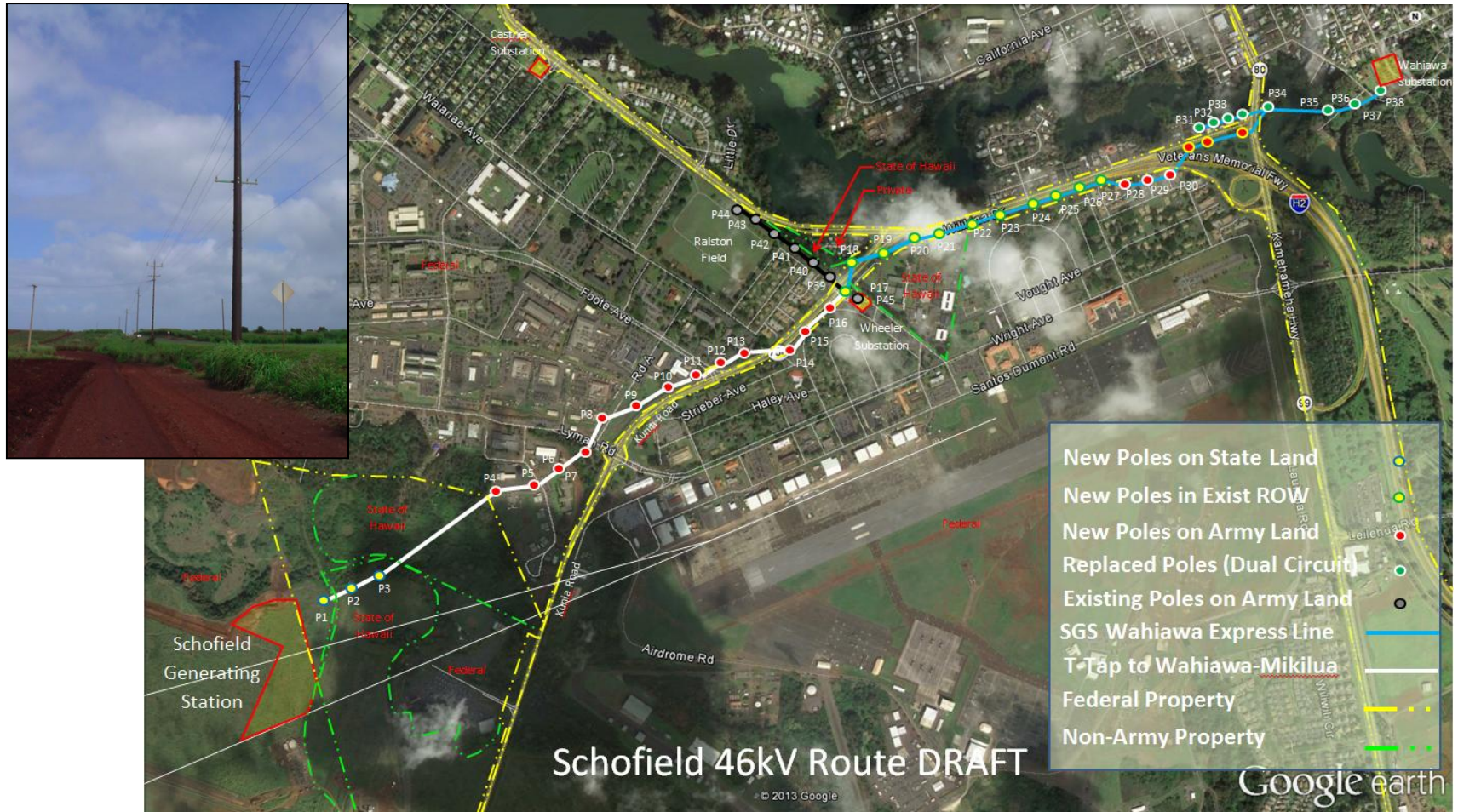


Next Steps

- Review comments received during the scoping period
- Prepare the draft EIS
- Circulate draft EIS for agency and public comment
- Revise the EIS to address comments received
- Prepare the final EIS
- Circulate the final EIS for agency and public review
- Accept the final EIS and issue a Record of Decision (ROD)

Project cannot proceed until this process has been completed.

Schofield Generating Station Project Proposed Site and Line Route



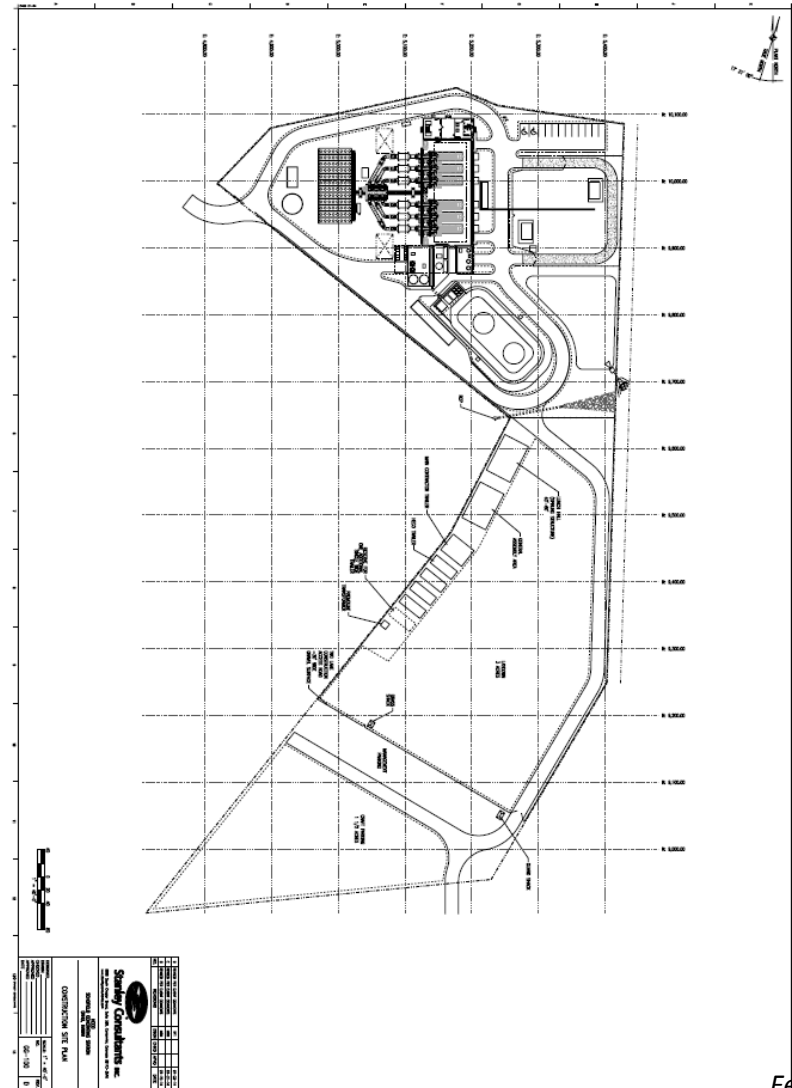
**Hawaiian
Electric**

February 2014

Schofield Generating Station Project

Conceptual Site Plan

- 10.3 acres of undeveloped former pineapple fields on U.S. Army's South Range property
- Inside fenceline of Schofield Barracks
- Power Plant concentrated on northern portion
- Construction access road from Kunia Road into southern laydown area
- Final access via Schofield Barracks



**Hawaiian
Electric**

Schofield Generating Station Project

3-D Views

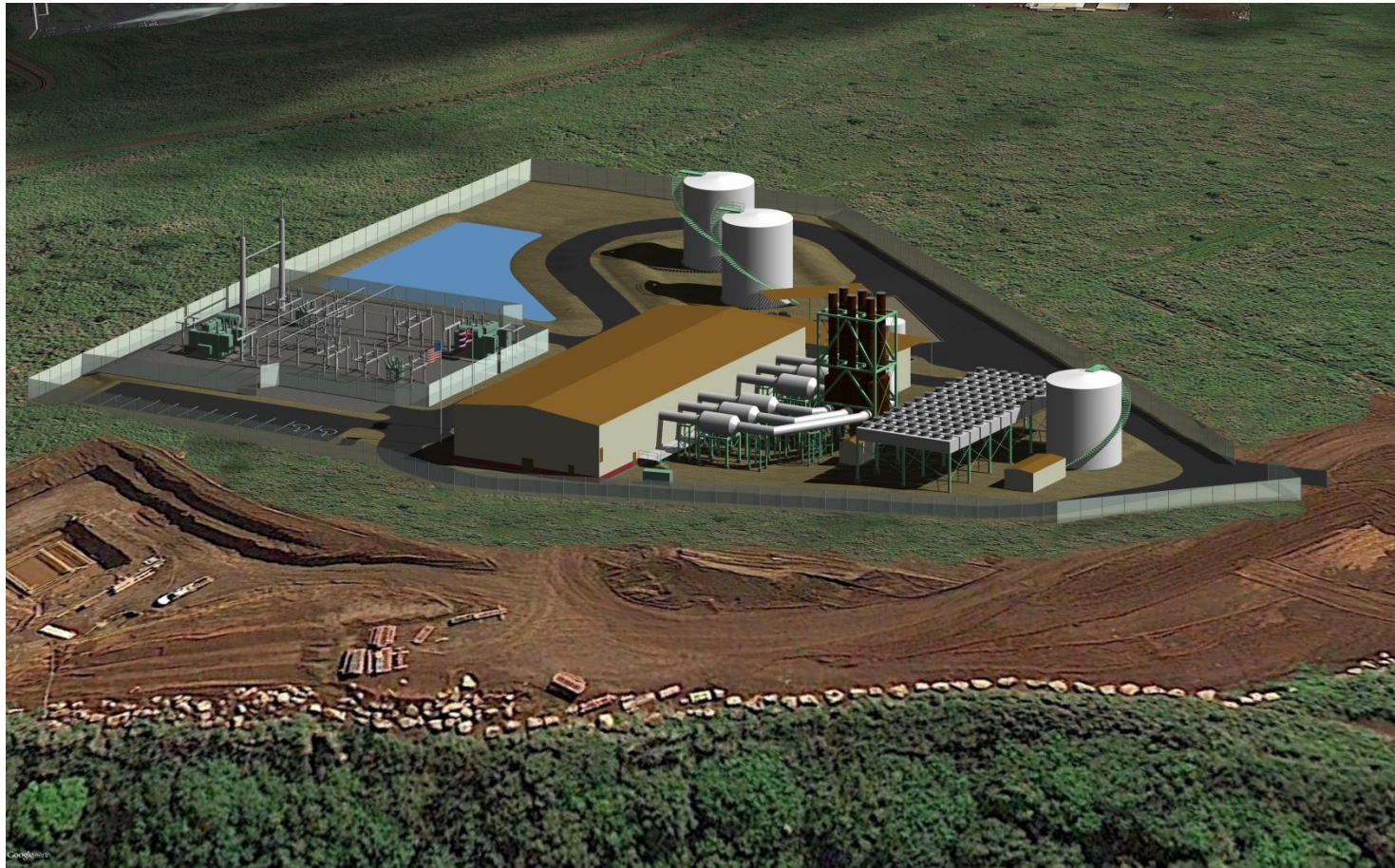


**Hawaiian
Electric**

February 2014

Schofield Generating Station Project

3-D Views

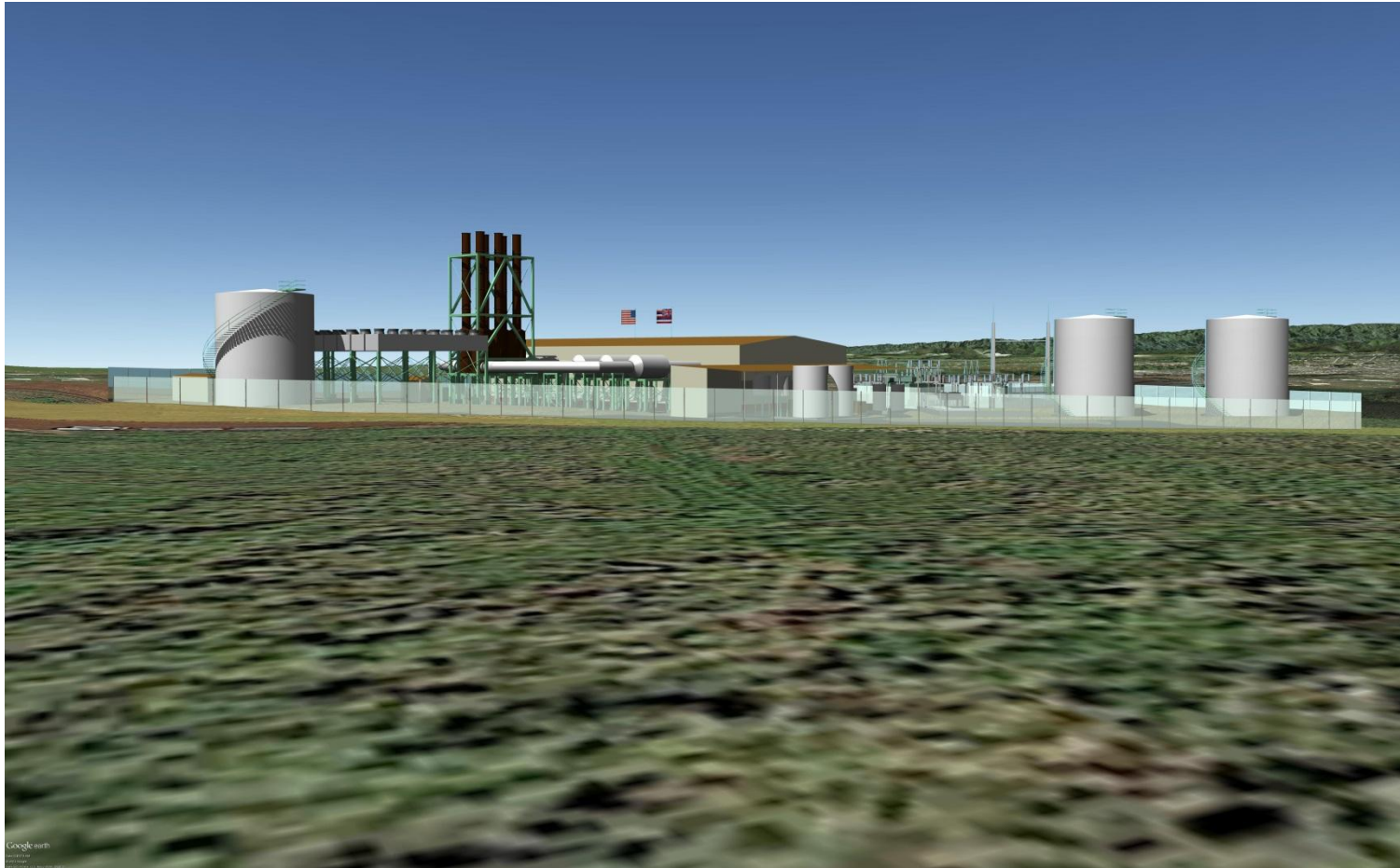


**Hawaiian
Electric**

February 2014

Schofield Generating Station Project

3-D Views



**Hawaiian
Electric**

February 2014

Schofield Generating Station Project

Engine Hall



**Hawaiian
Electric**

February 2014

Schofield Generating Station Project

Benefits

Benefits to Oahu residents and U.S. Army:

- Contributes to Energy Security
- Contributes to Renewable Energy Goals



**Hawaiian
Electric**

Schofield Generating Station Project

Energy Security and Resiliency

1. Improved grid reliability:
 - Tool to stabilize fluctuations from wind and solar power
2. Secure from natural coastal effects:
 - Tsunami and storm surge
3. Emergency power directly to Army and National Guard units
 - Enhances national security, homeland defense, and disaster response mission capabilities
4. Physically secure on Army base
5. Improved outage restoration:
 - Requires no external power to start
 - Can provide restart power to other units on island

Schofield Generating Station Project

Renewable Energy

Schofield Generating Station will:

- Contribute to achievement of State Renewable Portfolio Standard (RPS) goals
- Contribute to U.S. Army renewable energy goals
- Maintain a local demand for renewable biofuels

The project will contribute to these energy goals by:

- Operating on biofuel to meet goals
- Enhancing the ability of the grid to integrate as-available renewable energy sources



**Hawaiian
Electric**



SCOPING MEETING SCHOFIELD GENERATING STATION PROJECT ENVIRONMENTAL IMPACT STATEMENT



Questions and Answers



SCOPING MEETING SCHOFIELD GENERATING STATION PROJECT ENVIRONMENTAL IMPACT STATEMENT



Comments