



PUBLIC MEETING SCHOFIELD GENERATING STATION PROJECT DRAFT ENVIRONMENTAL IMPACT STATEMENT



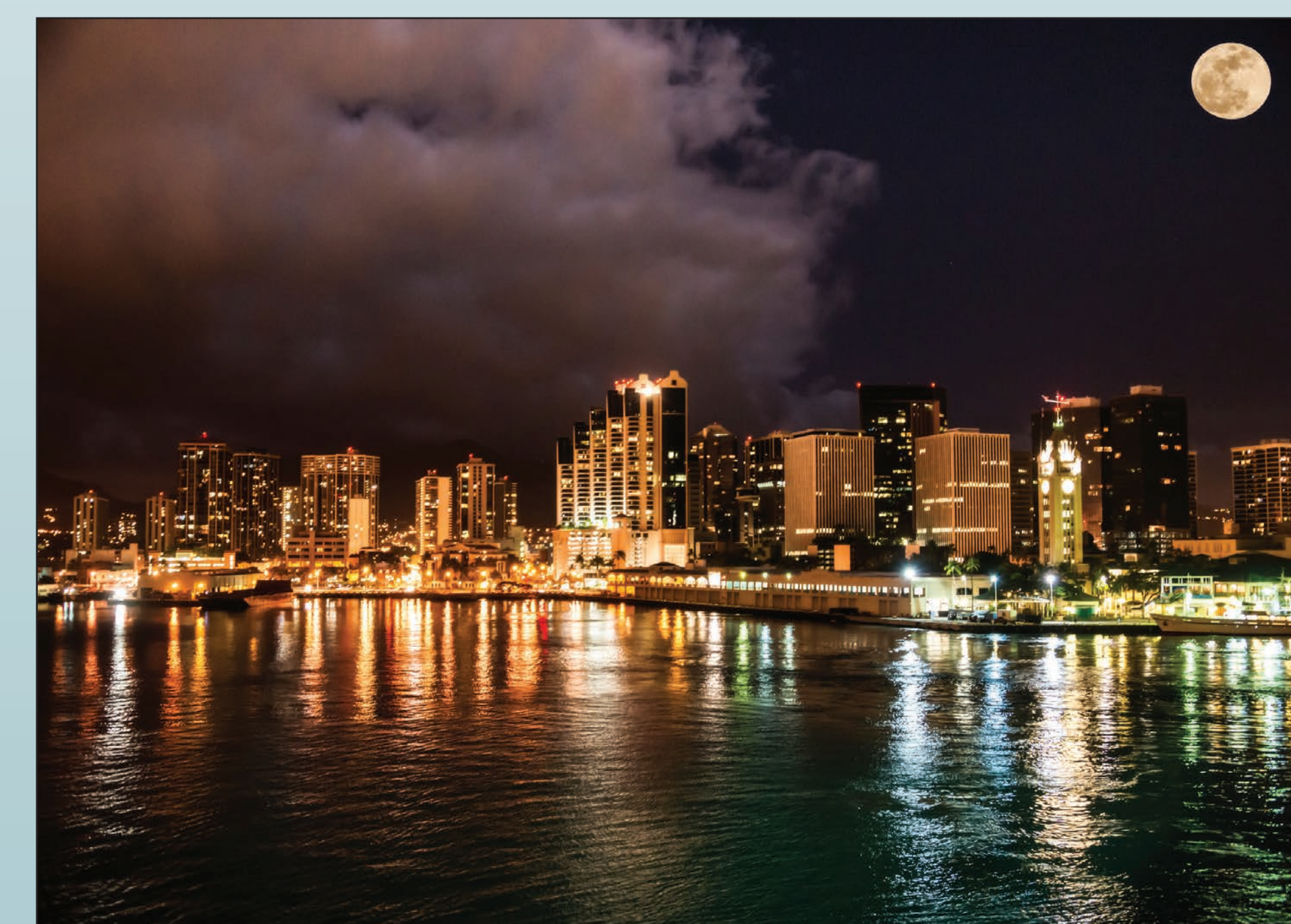
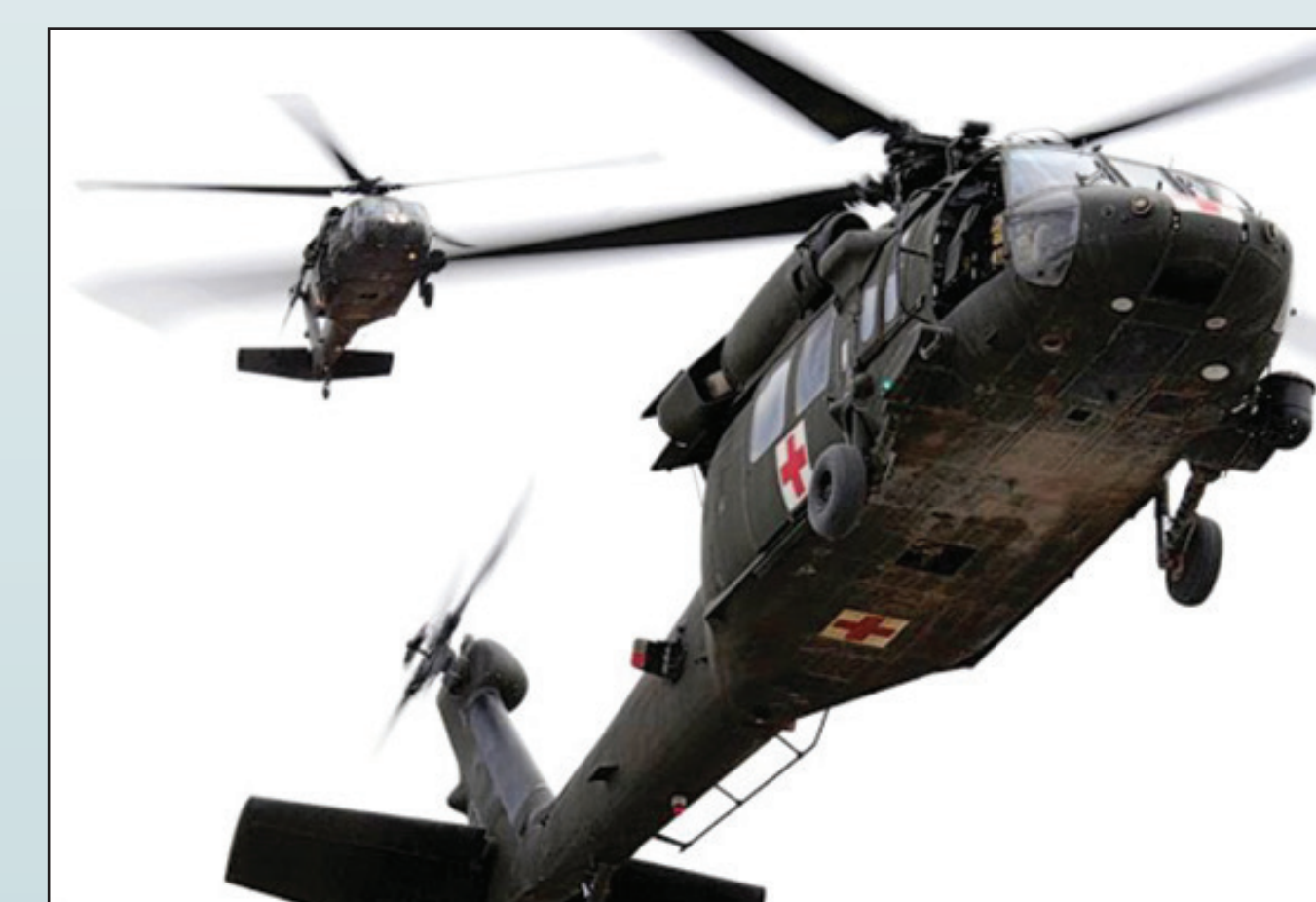
Proposed Action

The proposed action is the granting of a lease and easement of U.S. Army land on Schofield Barracks, and the granting of an easement and Conservation District Authorization to cross state land, to Hawaiian Electric for the construction, ownership, operation, and maintenance of a 50-megawatt (MW), biofuel-capable power generation plant and transmission line to connect the plant to the electric grid. The proposed project is referred to as the Schofield Generating Station Project (SGSP).

The SGSP would benefit Hawaiian Electric and Oahu residents by supplying power to the islandwide grid during normal operations.

The SGSP would also provide energy security for Schofield Barracks, Wheeler Army Airfield, and Field Station Kunia, helping to ensure that the Army can continue critical national security and first responder missions, particularly when the electric utility grid on Oahu has been compromised by a natural or man-made disaster.

Electricity produced from using renewable biofuels at the SGSP would help the Army and Hawaiian Electric achieve their renewable energy goals.





PUBLIC MEETING SCHOFIELD GENERATING STATION PROJECT DRAFT ENVIRONMENTAL IMPACT STATEMENT



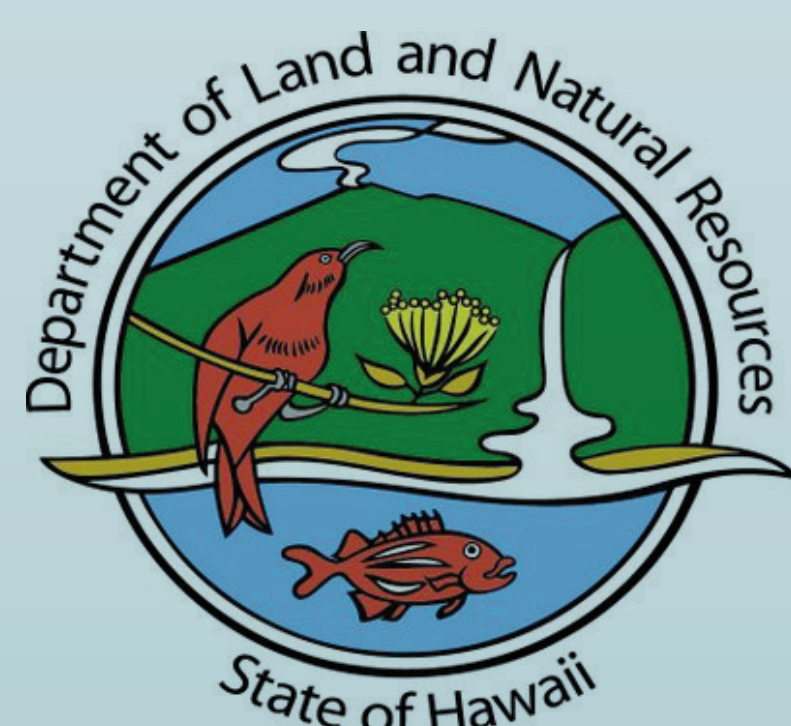
Roles of Key Players for the Proposed Project



U.S. Army Garrison–Hawaii (USAG-HI) is responsible for Schofield Barracks, Wheeler Army Airfield, and Field Station Kunia. USAG-HI would be the project host and would be provided “first call to power” from the SGSP in the event of extended grid outages. USAG-HI is the project proponent for the Environmental Impact Statement (EIS) under the federal requirements and would sign the Record of Decision (ROD), along with the U.S. Army Installation Management Command.



Hawaiian Electric would lease land from the Army for the power plant and seek easements from the Army and the Hawaii Department of Land and Natural Resources (DLNR) for associated transmission lines. Hawaiian Electric would finance, design, build, own, and operate the power plant and transmission lines. For the state EIS process, Hawaiian Electric is the applicant to the DLNR.



DLNR is responsible for state-owned lands that the new transmission lines would pass over. DLNR would grant an easement to Hawaiian Electric. DLNR has determined that the scope of the project meets the requirements for an EIS under state law and will be the Approving Agency for the EIS on behalf of the state.



PUBLIC MEETING SCHOFIELD GENERATING STATION PROJECT DRAFT ENVIRONMENTAL IMPACT STATEMENT



How Would this Project Benefit the Community?



The project would benefit Oahu residents by:

- Providing 50 MW of secure, firm, flexible, and renewable power generation to all of Hawaiian Electric's customers.
- Providing a power plant that, in the event of a major outage, can self-start without external power and restart other power plants.
- Enhancing the island's electrical resiliency and disaster response capability in the event of a natural or man-made disaster. It would be Oahu's only

powerstation located at elevation, away from coastlines, and on a military base with an airstrip capable of conducting and/or supporting military, National Guard, and Federal Emergency Management Agency (FEMA) disaster relief efforts.

- Enabling the integration of additional renewable energy sources to the grid, such as wind and solar power.
- Contributing to the state of Hawaii's Renewable Portfolio Standards through the use of renewable biofuels.
- Providing energy security for our military and National Guard units in support of their national security and disaster response missions.





PUBLIC MEETING SCHOFIELD GENERATING STATION PROJECT DRAFT ENVIRONMENTAL IMPACT STATEMENT



Environmental Consequences

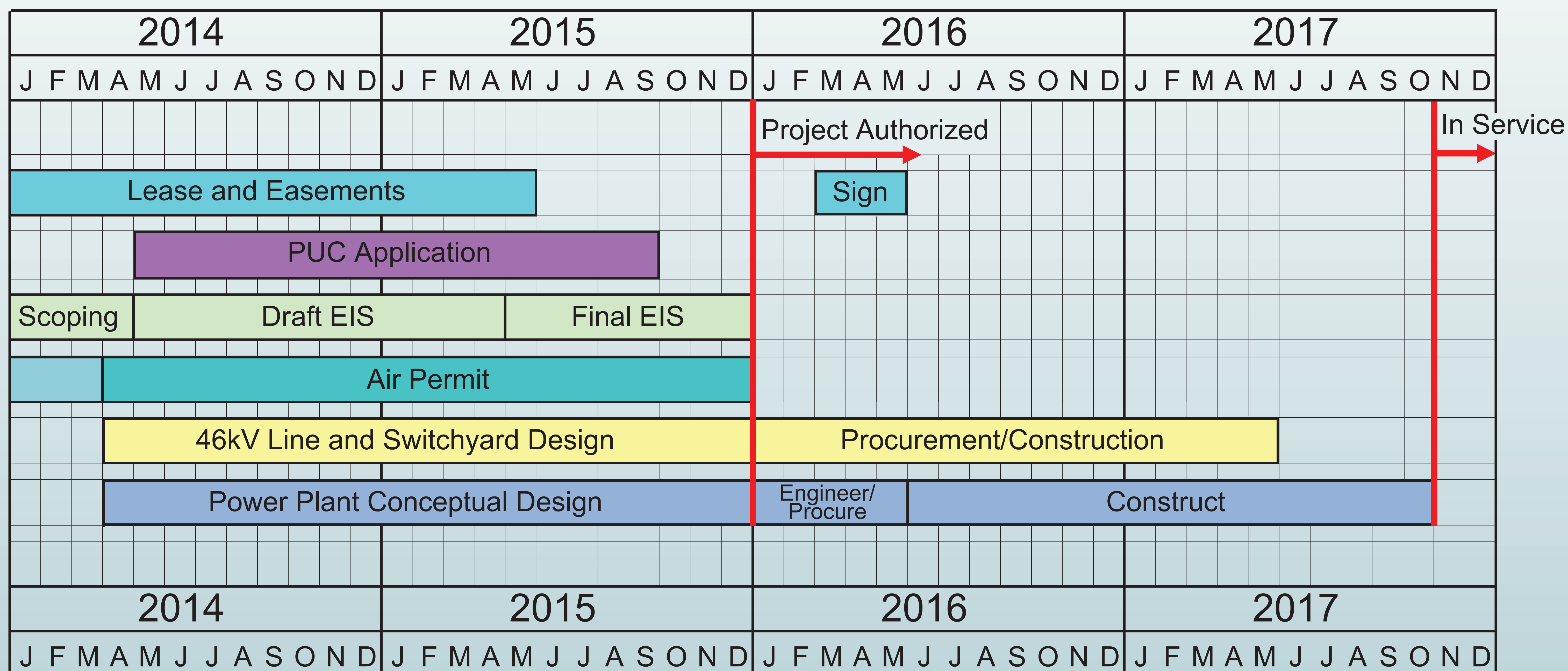
Resource Area	Proposed Action Impacts	No Action Alternative Impacts
Land use	Minor adverse	None
Airspace	Minor adverse	None
Visual resources	Moderate adverse	None
Air quality	Moderate adverse and beneficial	None
Noise	Moderate adverse	None
Traffic and transportation	Minor adverse and beneficial	None
Water resources	Minor adverse	None
Geology and soils	Minor adverse	None
Biological resources	Minor adverse and beneficial	None
Cultural resources	Minor adverse	None
Hazardous and toxic substances	Minor adverse and beneficial	None
Socioeconomics	None or beneficial	None
Utilities and infrastructure	Minor adverse and beneficial	None
Overall Environmental Consequences	Minor to moderate adverse and beneficial	None



PUBLIC MEETING SCHOFIELD GENERATING STATION PROJECT DRAFT ENVIRONMENTAL IMPACT STATEMENT



Project Timeline



Note: This timeline includes estimated dates only. The actual timeline is subject to the project's progress.



PUBLIC MEETING SCHOFIELD GENERATING STATION PROJECT DRAFT ENVIRONMENTAL IMPACT STATEMENT



What are the National Environmental Policy Act (NEPA) and the Hawaii Environmental Policy Act (HEPA)?

- NEPA and HEPA are federal and state regulations that require the identification and analysis of potential significant effects on the quality of the natural and human environment of certain actions and alternatives before those actions take place.
- NEPA and HEPA are mechanisms for:
 - Encouraging the consideration of alternatives having the least adverse effect.
 - Evaluating potential environmental impacts.
 - Incorporating public involvement into the decision-making process.



What is an Environmental Impact Statement (EIS)?

- An EIS is a document that presents the analysis of the environmental effects of the proposed action and its alternatives.
- An EIS includes opportunities for public involvement in agency planning/decision-making processes.
- An EIS includes a description of the existing conditions of the affected environment against which effects of alternative actions are evaluated.
- An EIS includes the analysis of effects on the human and natural environment.
- An EIS defines the project's potential environmental consequences (direct, indirect, and cumulative effects) and intended mitigation measures.



PUBLIC MEETING SCHOFIELD GENERATING STATION PROJECT DRAFT ENVIRONMENTAL IMPACT STATEMENT



Steps in Preparing a Joint EIS

1. Issue a Notice of Intent (NOI) to prepare an EIS under NEPA and an EIS Preparation Notice (EISPN) under HEPA. **Completed**
2. Consult and coordinate with regulatory agencies and the public to identify the scope and issues to be addressed in the EIS (the “scoping period”). **Completed**
3. Prepare a Scope of Statement in response to comments received during the scoping period under NEPA. **Completed**
4. Provide the written responses to public comments received in response to the EISPN under HEPA. **Completed**
5. Prepare the Draft EIS. **Completed**
6. Circulate the Draft EIS for agency and public comment. ★ **We Are Here**
7. Revise the EIS to address comments received.
8. Prepare the Final EIS.
9. Circulate the Final EIS for agency and public comment.
10. Accept the Final EIS under HEPA, and issue a Record of Decision (ROD) under NEPA.





PUBLIC MEETING SCHOFIELD GENERATING STATION PROJECT DRAFT ENVIRONMENTAL IMPACT STATEMENT



Schofield Barracks and Proposed Project Site

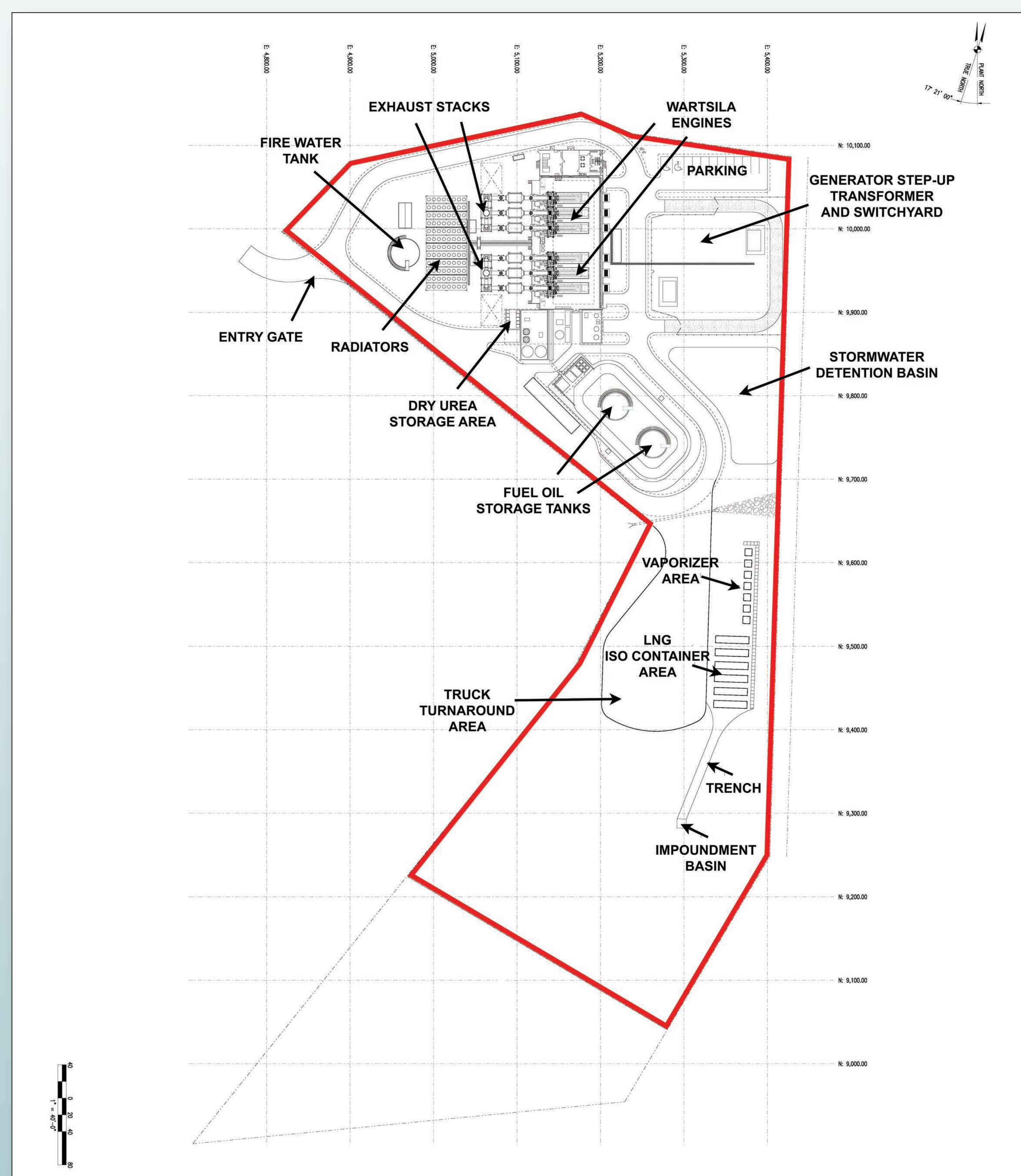




PUBLIC MEETING SCHOFIELD GENERATING STATION PROJECT DRAFT ENVIRONMENTAL IMPACT STATEMENT



Preliminary Project Site Design



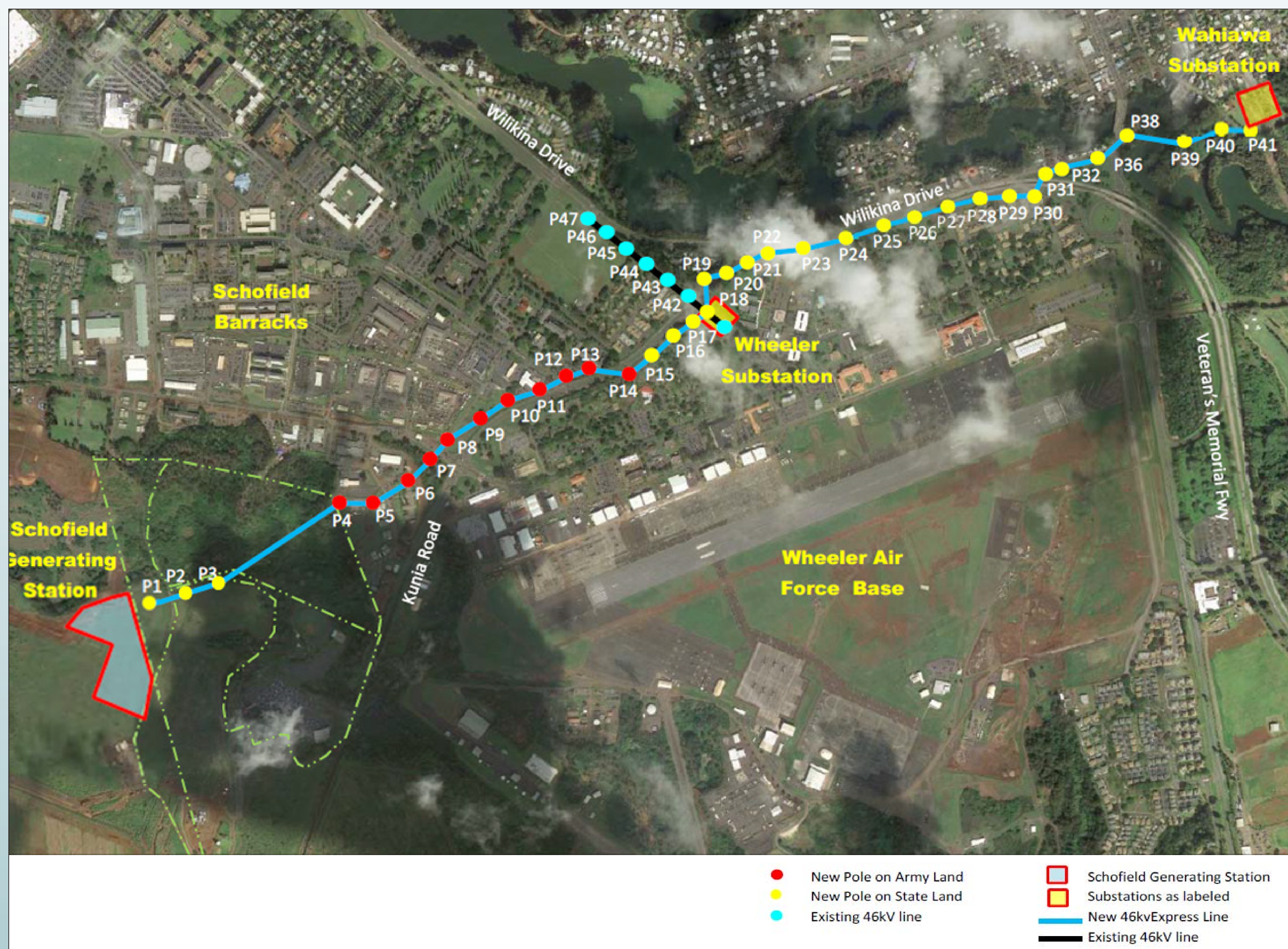
Preliminary design concept subject to change.



PUBLIC MEETING SCHOFIELD GENERATING STATION PROJECT DRAFT ENVIRONMENTAL IMPACT STATEMENT



Transmission Line Route



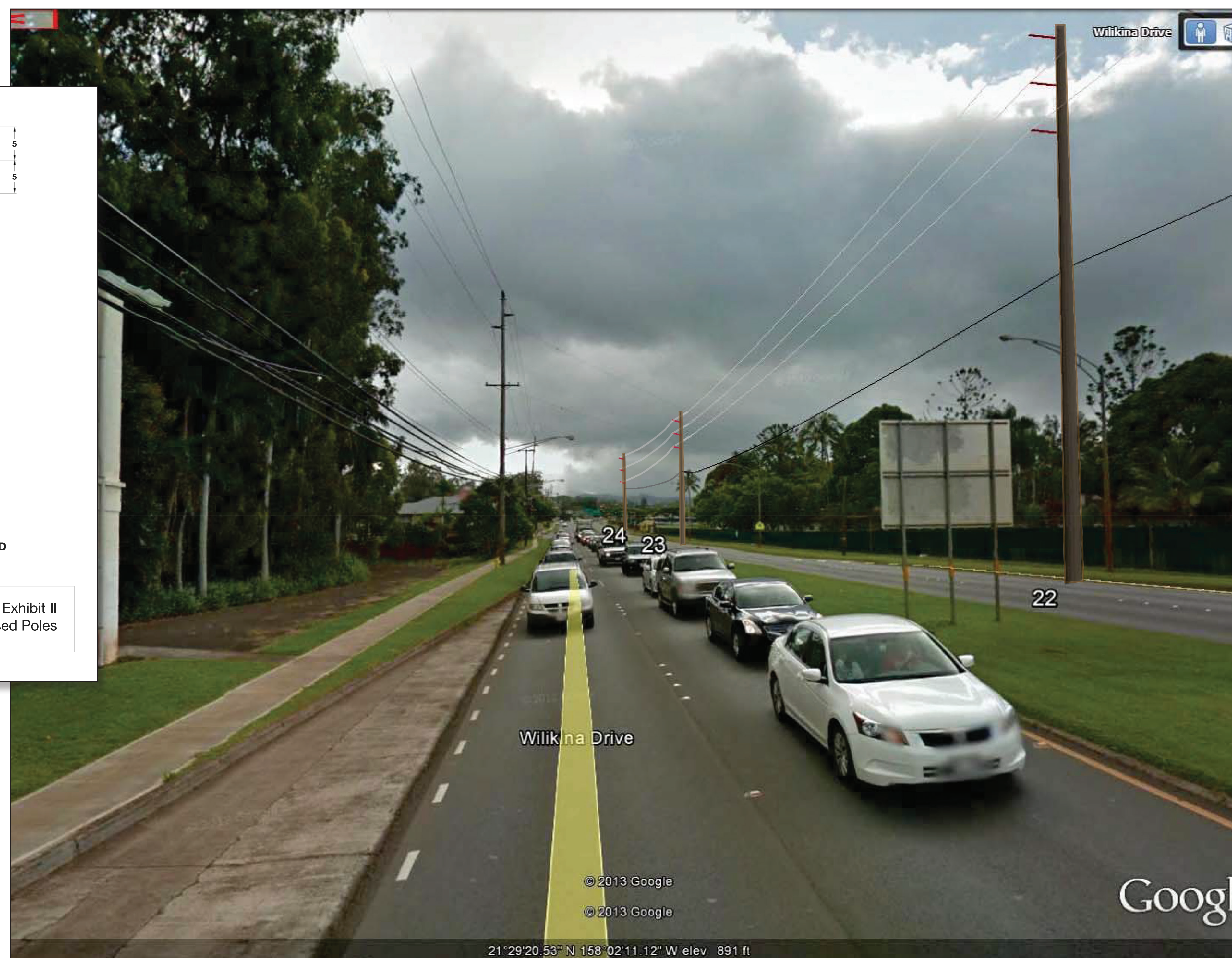
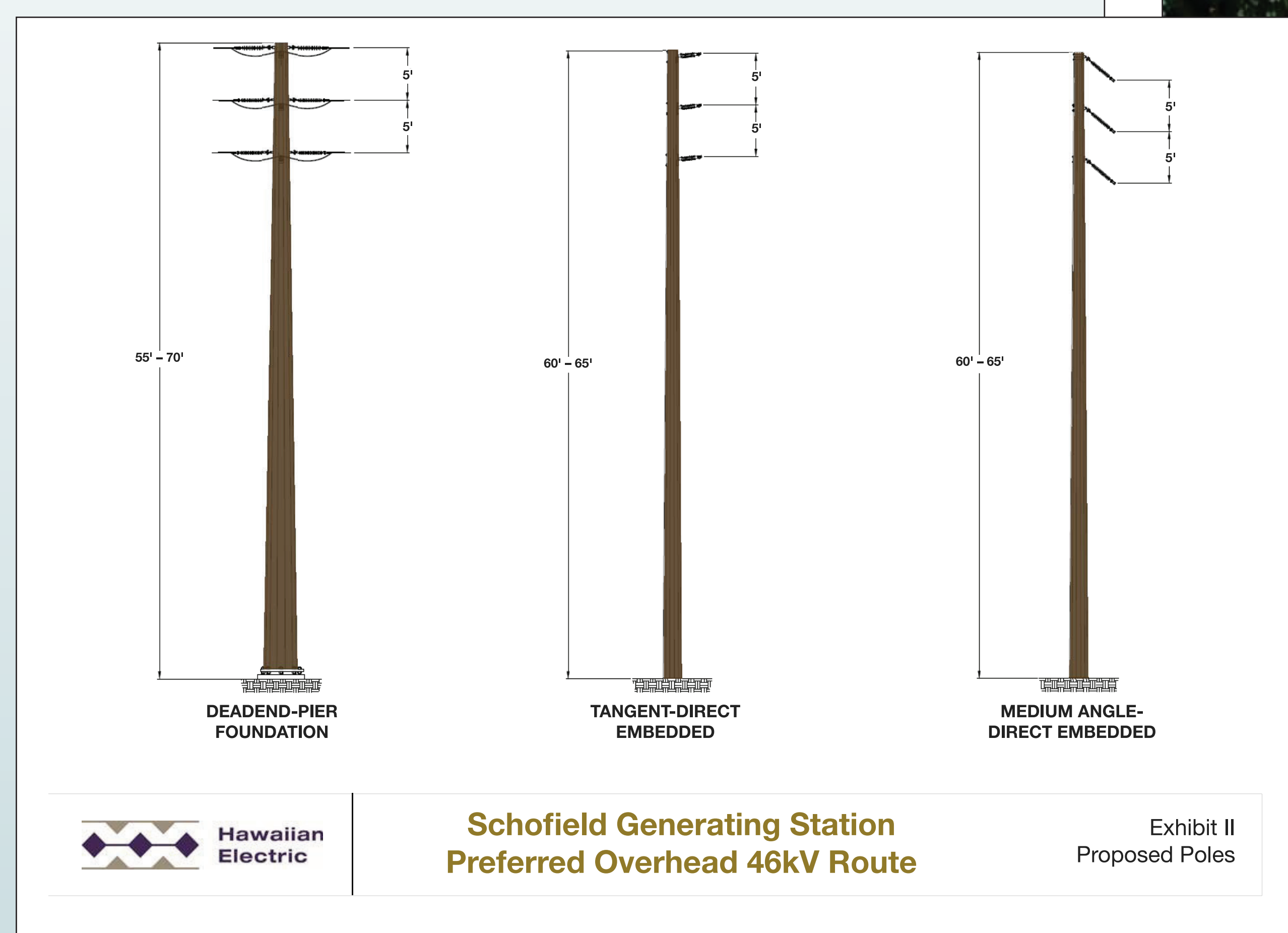
Preliminary design concept subject to change.



PUBLIC MEETING SCHOFIELD GENERATING STATION PROJECT DRAFT ENVIRONMENTAL IMPACT STATEMENT



Transmission Line Pole Renderings



**Schofield Generating Station
Preferred Overhead 46kV Route**

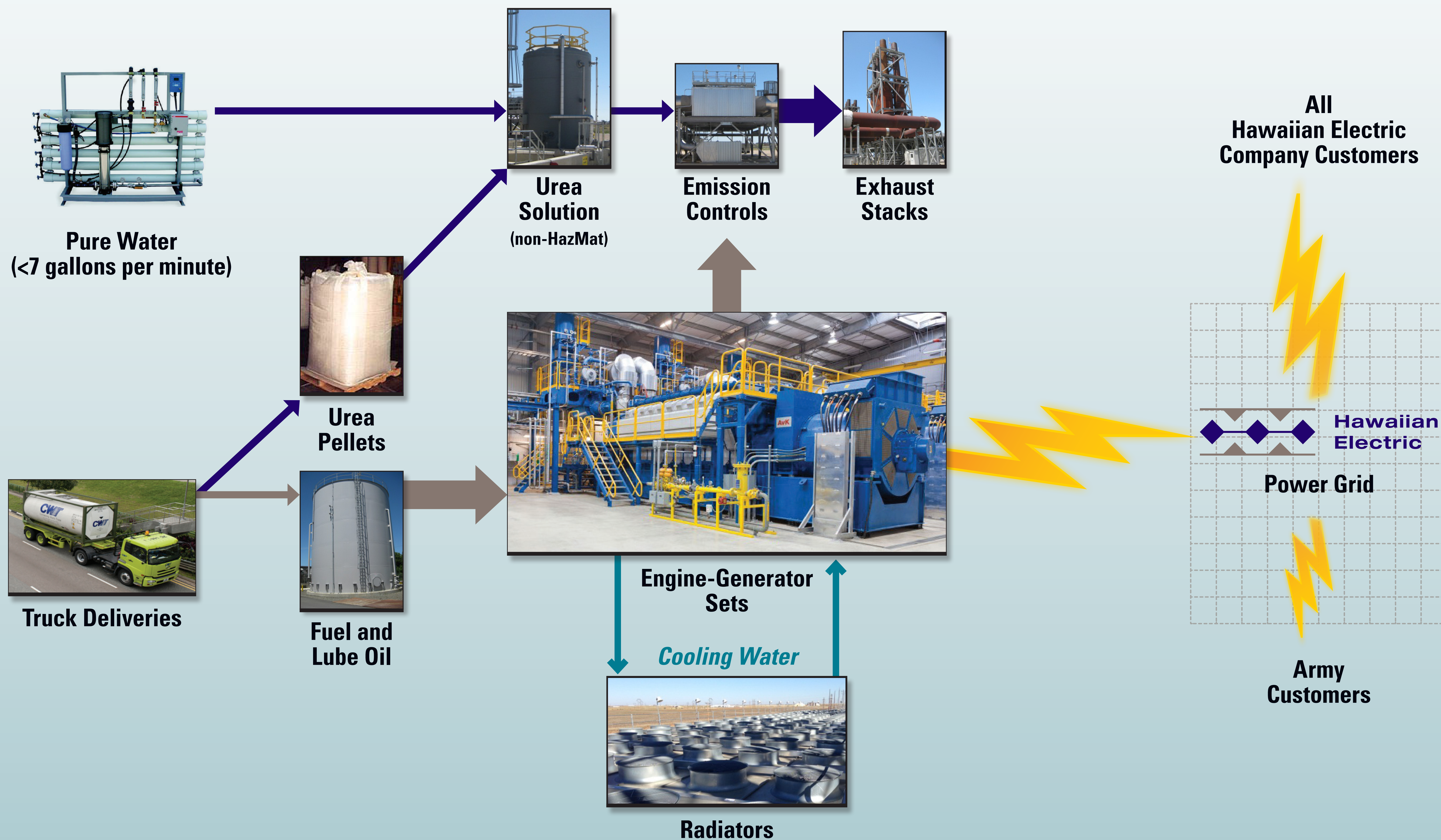
Exhibit III
VIEW CORRIDOR
EAST ON WILIKINA DRIVE



PUBLIC MEETING SCHOFIELD GENERATING STATION PROJECT DRAFT ENVIRONMENTAL IMPACT STATEMENT



How Will the Power Plant Work?

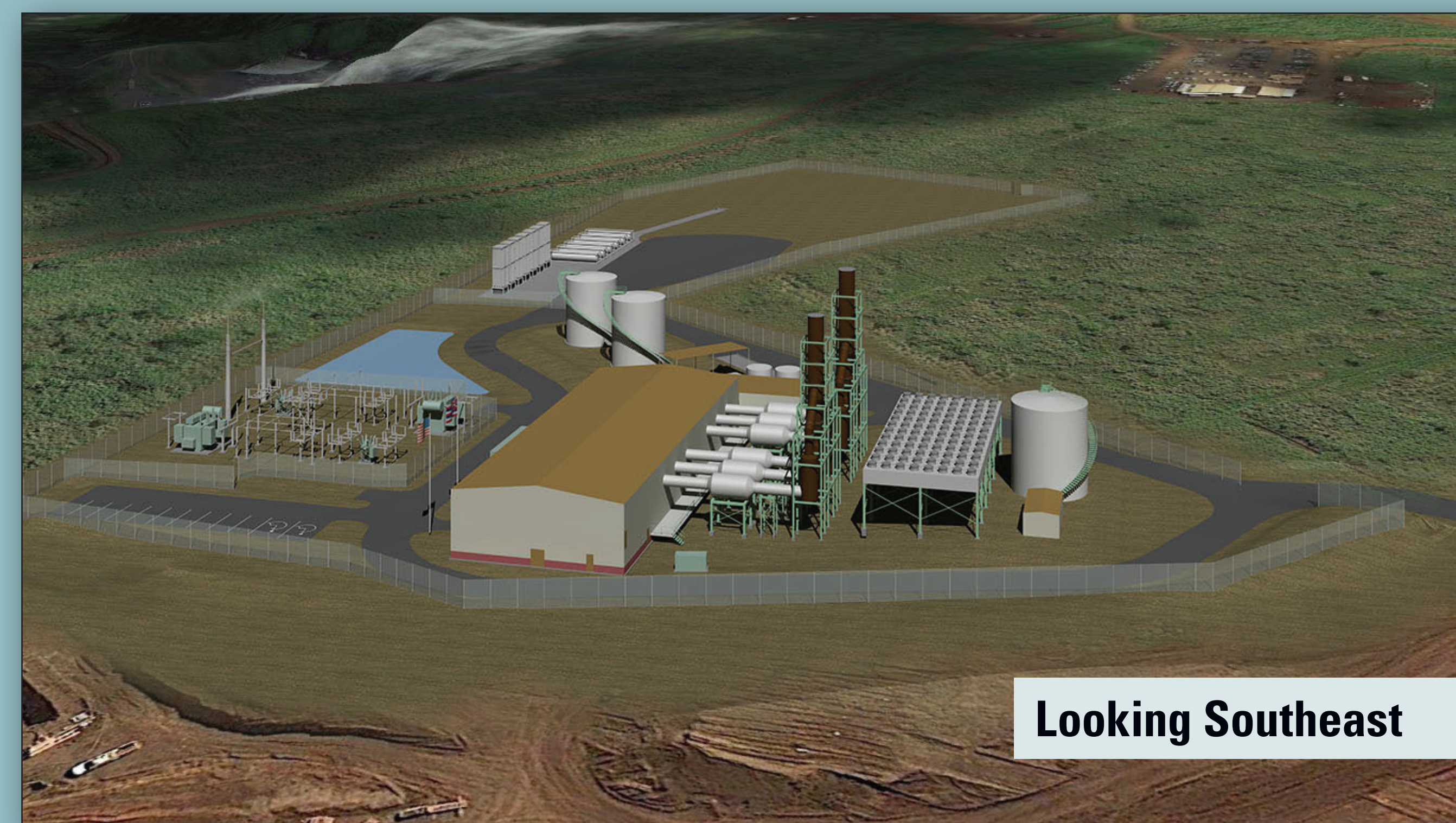
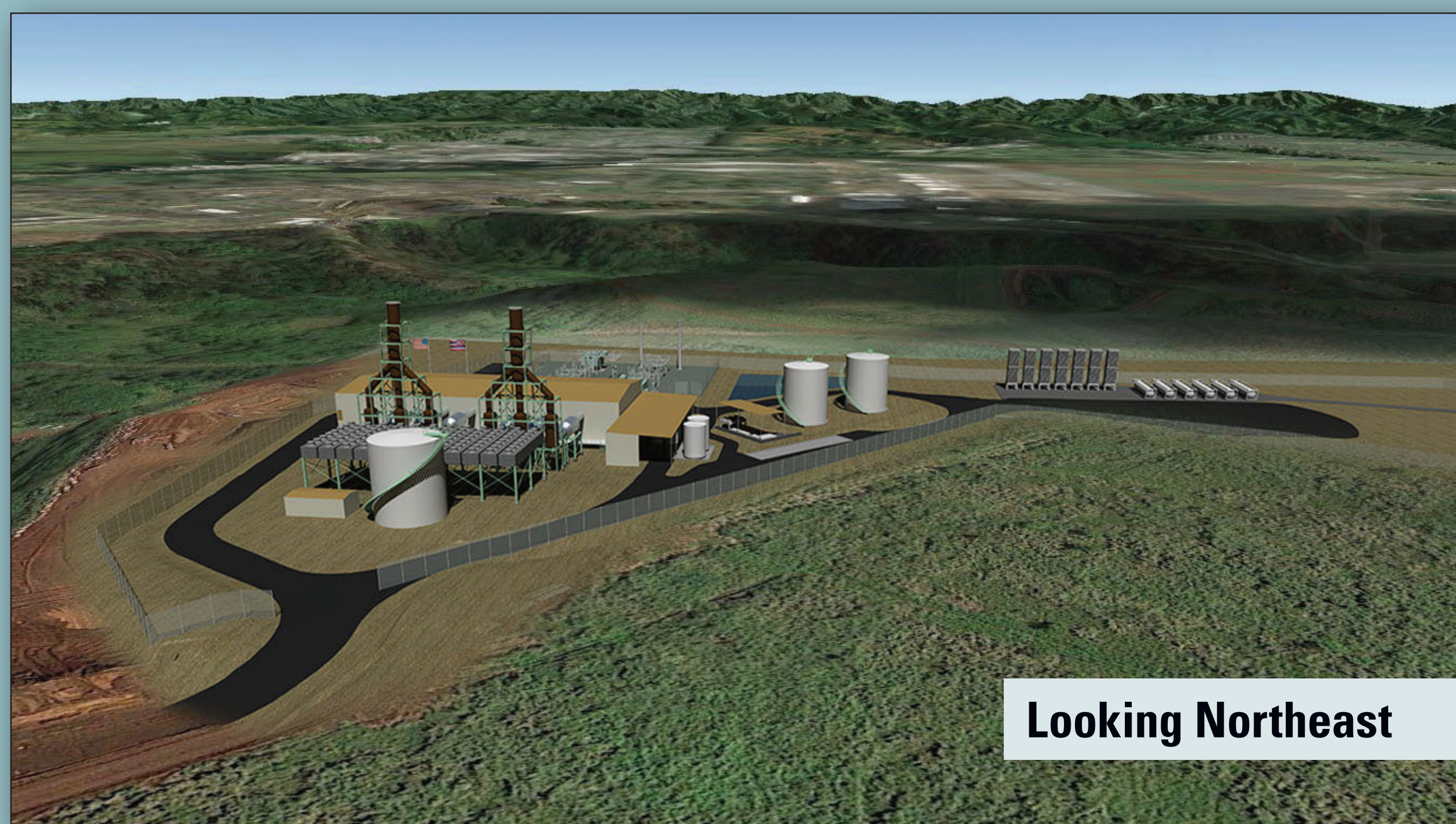
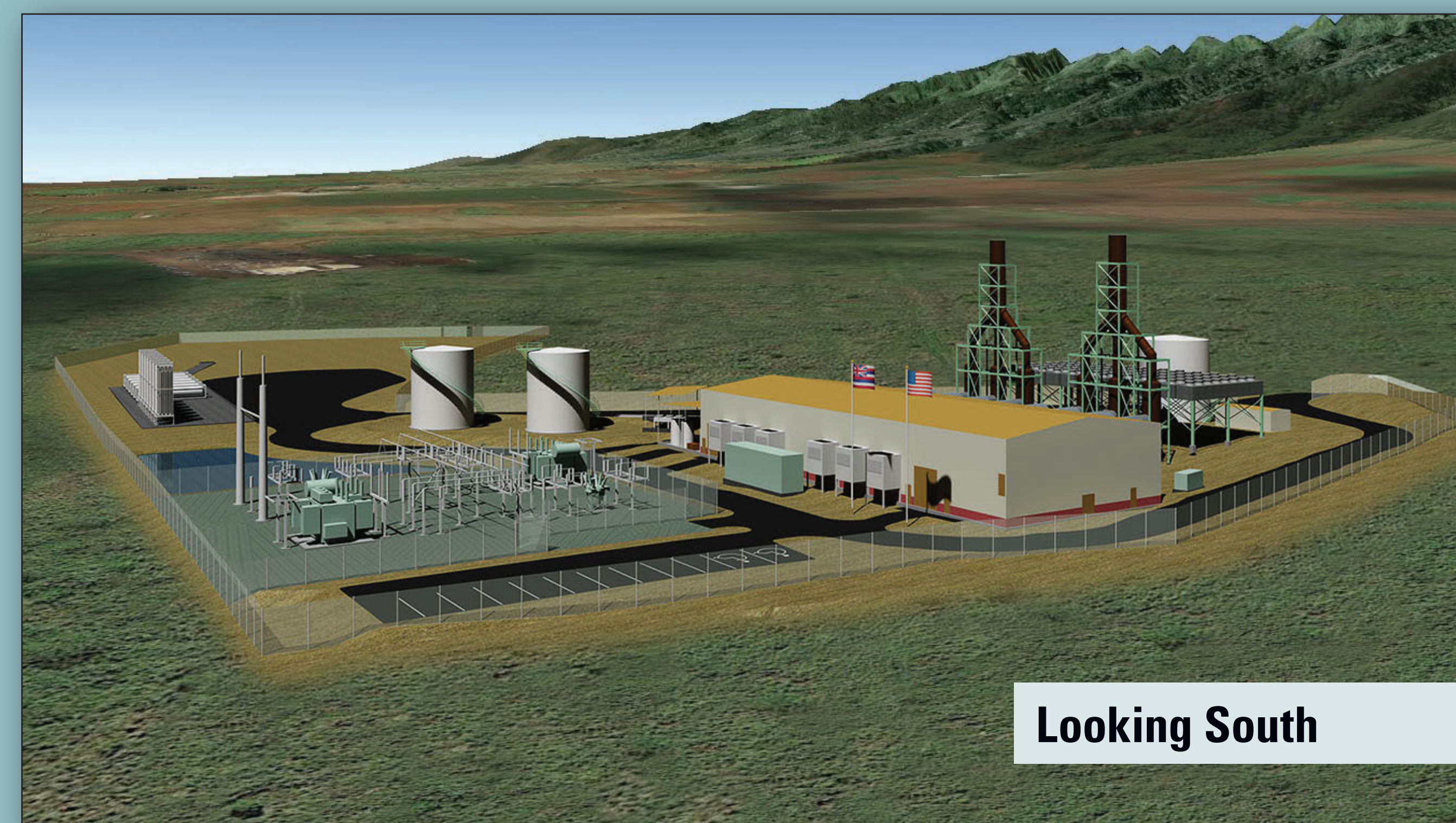
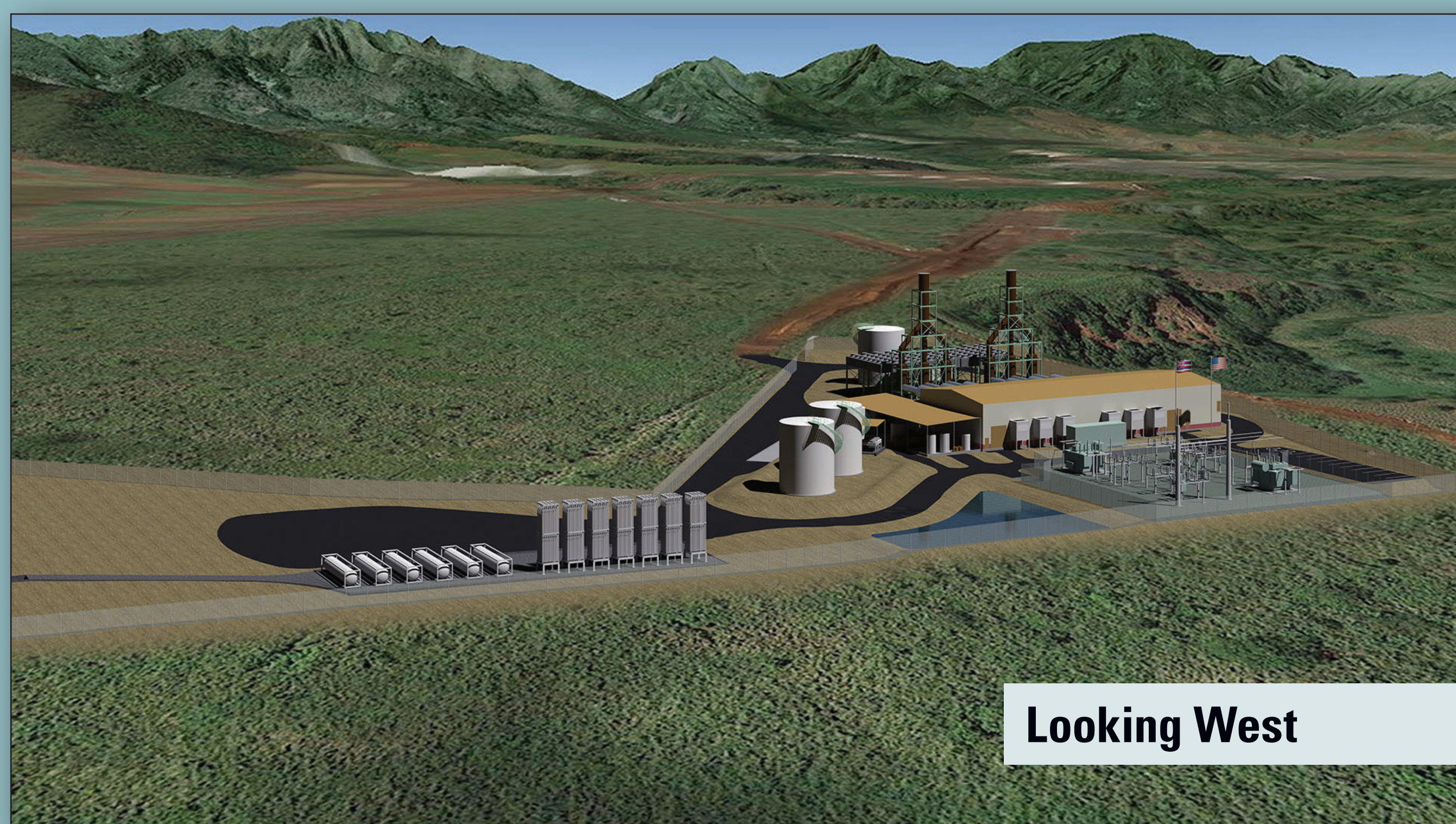




PUBLIC MEETING SCHOFIELD GENERATING STATION PROJECT DRAFT ENVIRONMENTAL IMPACT STATEMENT



3D Visual Renderings of Power Plant Layout





PUBLIC MEETING SCHOFIELD GENERATING STATION PROJECT DRAFT ENVIRONMENTAL IMPACT STATEMENT



Draft EIS Public Comment Period

- Notice of Availability published – April 24, 2015
- Public Meetings – May 20 and 21, 2015
- Public Comment Period Closes – June 8, 2015

How to Provide Comments

- Oral
 - Sign up to give oral comments during the formal comment session.
- Written
 - Use comment forms provided.
 - **Email** comments to: sgspcomments@tetrattech.com.
 - **Mail** comments (*postmarked by June 8, 2015*) to:
Directorate of Public Works
United States Army Garrison, Hawaii
ATTN: IMHW-PWE (L. Graham)
947 Wright Avenue, Wheeler Army Airfield
Schofield Barracks, Hawaii 96857-5013



**All comments due
by June 8, 2015**