



U.S. ARMY



Community Information Exchange

June 24, 2020

U.S. Army
Garrison Hawaii



Welcome

Slides are available at <https://home.army.mil/hawaii>

MENU



U.S. ARMY GARRISON HAWAII

The Army's Home in Hawaii



QUICK LINKS

- COMMUNITY CALENDAR
- COMMUNITY INFORMATION EXCHANGE
- HIKING ON ARMY INSTALLATIONS
- ID CARDS
- NEWCOMERS
- PHONE BOOK
- POLICIES & COMMAND PUBLICATIONS



U.S. ARMY HAWAII NEWS



FACEBOOK



TWITTER





Welcome

MENU

U.S. ARMY

SEARCH

U.S. ARMY GARRISON HAWAII

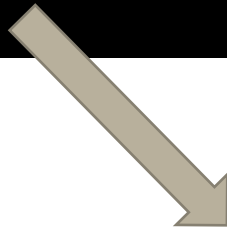
The Army's Home in Hawaii



Home / Directorates & Staff Offices / Public Affairs Office / Community Information Exchange

COMMUNITY INFORMATION EXCHANGE

- Slides are available at <https://home.army.mil/hawaii>
- Scroll to current month



Community Information Exchange, or CIE, is held every month, and is open to anyone who wishes to attend, including Hawaii Soldiers and family members. The meetings are from 9-10 a.m., the last Wednesday of each month, at Schofield Barracks. Meetings are not held in December. They are also streamed live on the garrison's page.

Community Information Exchange meetings inform Soldiers and families on installation and community matters. The responsibility for conducting Community Information Exchange meetings rests with the garrison commander and the agenda of installation-wide and community-wide topics of interest and concern.

The garrison commander and/or the U.S. Army Hawaii senior commander attends and supports the meetings, along with garrison subject-matter experts and directors.

Slides from the meetings are available to download below. Past meetings can be viewed on [FACEBOOK](#).

- 2020
- 2019
- 2018

ABOUT U.S. ARMY GARRISON HAWAII

U.S. Army Garrison Hawaii provides quality services, installation facilities, training and recreational centers to nearly 100,000 Soldiers, civilians and family members stationed on the islands of Oahu and Hawaii.

The garrison is headquartered at Wheeler Army Airfield, just 20 miles from the state capital of Honolulu.

Hawaii's mild climate allows for year-round training and deployment operations, while its





Agenda

- Opening Remarks
- Directorate of Installation Safety
- Directorate of Family and Morale, Welfare and Recreation
- School Liaison Office
- Directorate of Public Works
- Housing
- Directorate of Emergency Services
- Directorate of Plans, Training, Mobilization and Security
- Desmond T. Doss Health Clinic
- Integrated Religious Support Team
- Community Organizations
- Lightning Forge
- Army National Hiring Days
- Calendar at a Glance
- Online Resources
- Closing Remarks

Slides available at
<https://home.army.mil/hawaii/index.php/garrison/pao/CIE>





Directorate of Installation Safety

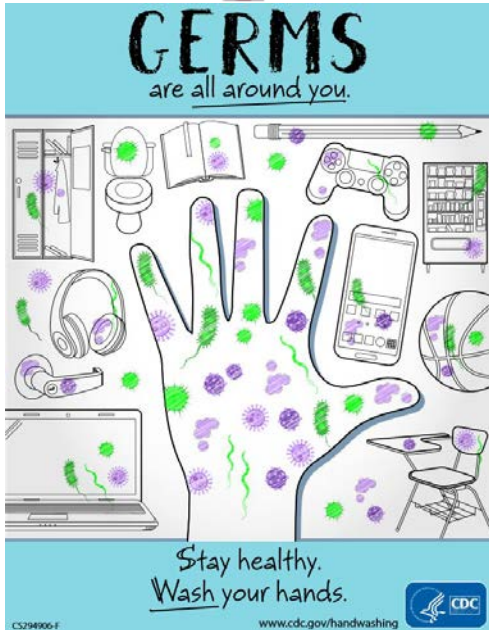
Stephen Fairbanks
Director
(808) 656-1173





Garrison Safety Office (GSO)

COVID-19





Garrison Safety Office (GSO)

COVID-19

✓ How to Protect Yourself and Your Family

- Read cleaning product labels:
 - Some products sold are not effective against the coronavirus
 - Improperly used cleaning products can cause additional health concerns
 - Always follow the manufacturers guidance.

✓ Protect Others by Doing Your Part

- When you or a family member are not feeling well, please stay home



- Take appropriate actions to make others feel safe within the community and workplace





Directorate of Family and Morale, Welfare and Recreation

Rhonda D. Hunter
Director
(808) 656-0037





Directorate of Family and Morale, Welfare and Recreation

All programs have been modified to follow COVID-19 restrictions

Army Libraries in Hawaii – SGT Yano Library & Fort Shafter	<ul style="list-style-type: none"> • SGT Yano: Sunday: Closed, Monday & Tuesday: 11 a.m. – 8 p.m., Wednesday – Saturday: 11 a.m. – 6 p.m. • Fort Shafter: Monday – Thursday: 10 a.m. – 6 p.m., Friday – Sunday: 11 a.m. – 4 p.m.
Army Community Service – Schofield Barracks	<ul style="list-style-type: none"> • Monday – Friday: 7:30 a.m. – 4:30 p.m.
Arts & Crafts – Schofield Barracks	<ul style="list-style-type: none"> • Sunday – Tuesday: Closed, Wednesday & Thursday: 10 a.m. – 4 p.m., Friday & Saturday: 9 a.m. – 4 p.m.
Auto Skills – Schofield Barracks	<ul style="list-style-type: none"> • Monday – Tuesday: Closed, Wednesday – Friday : 11:30 a.m. – 7 p.m., Saturday & Sunday: 9 a.m. – 4 p.m.
Bowling <ul style="list-style-type: none"> • Fort Shafter Bowling Center • Schofield Bowling Center • The Hangar 	<ul style="list-style-type: none"> • Sunday – Saturday: 9 a.m. – 9 p.m. • Sunday – Saturday: 9 a.m. – 9 p.m., Re-Open Effective 1 July • Sunday & Monday: Closed, Tuesday – Saturday: 11 a.m. – 9 p.m.
Child and Youth Services <ul style="list-style-type: none"> • Child Development & School Age Centers • Youth Instructional Programs • Youth Sports Clinics • Youth Centers (Middle School & Teen) 	<ul style="list-style-type: none"> • Open for essential care to pre-COVID19 full-time enrolled children of ME parents • Open for enrollment in available one-on-one instruction • Open for enrollment in available limited clinics • Monday – Friday: 1 – 6 p.m.
Food & Beverage (Snack Bar) – Limited Dine-In <ul style="list-style-type: none"> • Fort Shafter Bowl (Food Only) • Leilehua Golf Course Grill • Schofield Bowl (Food Only) • The Hangar (Food Only) • Hale Ikena / Mulligan's (Limited Menu) 	Stay tuned for catering and event availability updates! <ul style="list-style-type: none"> • Monday – Friday: 7:30 a.m. – 1:30 p.m., Saturday & Sunday: 9 a.m. – 3 p.m. • Sunday – Saturday: 6:30 a.m. – 5 p.m. • Monday – Friday: 7:30 a.m. – 1:30 p.m., Saturday & Sunday: 9 a.m. – 3 p.m., Re-Open Effective 1 July • Tuesday – Saturday: 11 a.m. – 6 p.m. • Monday – Friday: 11 a.m. – 2 p.m.
Golf Courses – (Leilehua & Nagorski)	<ul style="list-style-type: none"> • 7 Days a Week / Pro Shop Hours: 6 a.m. – 6 p.m.
Kennels – Halawa	<ul style="list-style-type: none"> • 7 Days a Week / Customer Hours: 10 a.m.-2 p.m.
Kilauea Military Camp – Hawaii Island	<ul style="list-style-type: none"> • Authorized reservations for Hawaii guests
Leisure Travel Services – Schofield & Fort Shafter	<ul style="list-style-type: none"> • Sunday: Closed, Monday – Friday: 9 a.m. – 5 p.m., Saturday: 9 a.m. – 2 p.m.
Outdoor Recreation – Schofield Barracks	<ul style="list-style-type: none"> • Sunday – Monday: Closed, Tuesday – Saturday: 8:30 a.m. – 5 p.m.
Pilliaau Army Recreation Center (PARC) <ul style="list-style-type: none"> • Beach House by 604 – Limited Dine-In 	<ul style="list-style-type: none"> • Authorized reservations for Hawaii guests / Only authorized guests and Beach House by 604 diners are authorized on property • Sunday: 9:30 a.m. – 9 p.m., Monday – Thursday: 11 a.m. – 9 p.m., Saturday: 9:30 a.m. – 11 p.m. (non-registered guests will be permitted walk-in access)
Tropics Recreation Center and Koa Cafe	<ul style="list-style-type: none"> • Sunday: 11 a.m. -6 p.m. & Thursday – Saturday: 11 a.m. – 10 p.m.
Physical Fitness Centers	<ul style="list-style-type: none"> • TAMC, Fort Shafter, and Martinez PFCs are open to Active Duty only
Pools	<ul style="list-style-type: none"> • Richardson and TAMC are open for mission unit training only - Stay tuned for open swim updates!



Family and Morale, Welfare and Recreation

CYS Expanding Child Care to All Full Day Care Patrons (pre-COVID19)

- **Background:** COVID-19 restrictions have reduced the maximum group sizes in classrooms. Maximum group size per classroom is 10 (including staff) for all CYS programs.
- **Present:** Child Development Center (CDC) and School Age Center (SAC) programs are providing care for personnel receiving care pre-COVID19 who are determined essential with verification from their supervisor.
- **Next Phase:** 1July, CYS will resume priority care to provide care for patrons who were enrolled in full-time care prior to the start of the pandemic / issuance of stay at home orders.
- All new enrollments will be managed by the waitlist position and placement priority. Hourly care will not be available unless the physical space capacity is able to accommodate additional care spaces.

1123 – Required full-time care spaces (Pre-COVID Enrollment)

911 – Physical Capacity

212 – Non-traditional Temporary Care Space

1123 – Available full-time care spaces

Full-time care spaces are being created by increasing alternative rotating activity group spaces (gymnasium, outdoors, on-post excursions) in School Age / Youth Centers. This allows us to move older groups from CDCs to SACs and SACs to YCs.





Family and Morale, Welfare and Recreation

CYS Expanding Child Care to All Full Day Care Patrons (pre-COVID19)

✓ What to Expect:

- IMCOM restrictions continue to change – there will be additional changes to ratio restrictions that may allow us to expand spaces in the future. CYS will continue to modify space availability as restrictions change.
- State / Oahu child care availability is slowly resuming care services. However, phasing and space availability is dependent on the individual child care center. This will cause uncertainty for those enrolled with those providers pre-COVID19.
- The wait list in Hawaii will continue to be a concern. This is not a COVID-19 specific situation but is further impacted by the temporary reduction in physical capacity.
- Travel restrictions have increased child care concerns. Extended family members may not be available to provide traditional care support. Children who stay with non-primary custodial parents during summer periods may have additional travel challenges.
- Children may receive care outside of their previous child care location. This is necessary to accommodate pre-COVID19 enrollment.
- Uncertified providers may not provide more than 10 hours of reoccurring / regular child care in their home per week. Unauthorized childcare restrictions will continue to be enforced.

✓ Important Community Assistance Required:

- Parents should consult with their unit leadership / supervisor to identify child care concerns now and predict / identify their return to work date.
- Pre-COVID19 enrollees need to communicate with CYS to identify their return to work date. An orderly / phased return will reduce the stress of transition on the children, Families and caregivers.
- Pre-COVID19 enrollees who will not return to work or who are PCSing / ETSing, etc. should submit their withdrawal notice to CYS as soon as they know that child care will not be required. This will allow us to expedite the placement of waitlist care.

✓ Command Assistance Required:

- Communicate the importance of keeping children home if they are ill. Soldiers will need command support and emphasis of this as a priority.
- Inquire about their unit / Soldier's child care situation. Child care resources may be reduced and temporarily unavailable. Soldiers may not have any immediate child care options available.
- Support a phased return to work to allow child care transitions to occur in an organized manner.

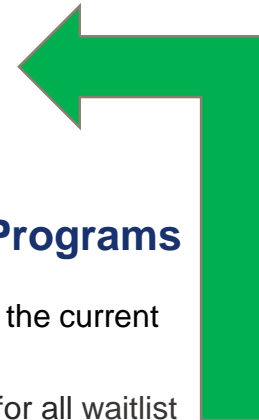




Family and Morale, Welfare and Recreation

Child Care Placement Priorities

Priority Categories		Can Displaced By:
1A	CYS Personnel	None
1B	a - Single/Dual Active Duty Members	None
	b - Single / Dual Guard/Reserve (Active or Inactive Training Status)	None
	c - Active Duty w/ Full-Time Working Spouse	None
	d - Guard/Reserve (Active or Inactive Training Status) w/ Full-Time Working Spouse	None
1C	a - Active Duty Members w/ Part-Time Working Spouse (or seeking employment)	1A & 1B
	b - Guard/Reserve (Active or Inactive Training Status) w/ Part-Time Working Spouse (or seeking employment)	
1D	a - Active Duty Members w/ Full-Time Student Spouse	1A, 1B & 1C
	b - Guard/Reserve (Active or Inactive Training Status) w/ Full-Time Student Spouse	
2	a - Single/Dual DoD Civilians	1A & 1B
	b - DoD Civilian w/ Full-Time Working Spouse	
3	Space Available - All Others	1A, 1B, 1C, 1D & 2



Policy Change Concerning Priorities for Department of Defense Child Care Programs

The policy, [signed Feb 21, 2020](#), by [Secretary of Defense Mark Esper](#), will implement a policy change to the current priorities for child care.

The DoD's waitlist management system, [MilitaryChildCare.com](#), will continue to serve as the access point for all waitlist requests. [Implementation of these changes is effective beginning September 1, 2020](#); the Washington Headquarters Services Directives Division will update the current version online.

What can you expect? New priorities with potential displacement of lower priority categories (45 day notice)





Child & Youth Services

The Army FCC Program is a child care option offered in homes on post by authorized Military Family members and qualified civilians working as independent contractors.

Family Child Care Providers *A career in Family Child Care awaits you!*

Announcing new bonuses for FCC providers!

effective 1 June 2020, a retention bonus of **up to \$1,000** will be offered to FCC Providers who relocate their home business to their next installation and a recruitment bonus of **up to \$1000** will be offered to those who successfully open their homes for the first time!



BENEFITS

- Expedited background check clearance process
- Paid training
- Opportunities to increase your salary with training & education
- Business that moves when you move
- Stay at home with your children & earn a salary at the same time

More information about benefits;
<https://www.armymwr.com/programs-and-services/family-assist/family-child-care-homes>



FCC Provider Transfer

A career in Family Child Care awaits you!

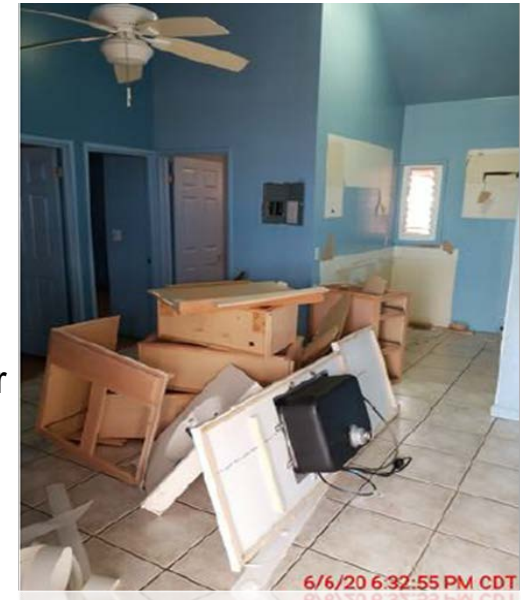
Contact FCC office at 655-1521 or PCS office at 655-5314/8380





NAF MWR Funded Projects

- Fort Shafter Cosmic Lighting Upgrade: **complete**
- Leilehua Golf Course Driving Range: **projected to reopen Sept 2020**
- Fort Shafter Bowl Restroom Renovations: **in progress**
- Hale Ikena Restroom Renovations: **in progress**
- Piilila'au Army Recreation Center (PARC): **in progress**
 - PARC will remain open for the duration of the renovation. A predetermined number of cabins will be completed and available for usage prior to the next cluster starting.





KILAUEA MILITARY CAMP
MOUNTAIN COTTAGES & RESORT

Kilauea Military Camp **IS OPEN!!!**

KMC reopened on 16 June 2020 and continues to practice the highest standards of cleanliness and disinfecting measures. The health and safety of our patrons' is KMC's highest priority with continuous daily sanitation and social distancing.

Just recently opened, the 10-Pin Grill is serving Grab-n-Go and dine in for Breakfast, Lunch and Dinner.

We invite you to rejuvenate during your stay at Kilauea Military Camp and experience the warm Aloha spirit that we offer.

For more information on Kilauea Military Camp, visit our website at www.KilaueaMilitaryCamp.com



****Event is subject to change due to unforeseen circumstances.





Better Opportunities

for Single Soldiers, USAG-HI

BOSS Life Skills & Community Service Events

- **June 25, 26**
 - Deep Sea Sport Fishing
- **June 27**
 - Fort Shafter Gate Cleanup
- **July 1**
 - Monthly BOSS Meeting
- **July 9, 10, 11**
 - Deep Sea Sport Fishing
- **July 13-17**
 - Standard Lifeguard Certification
- **July 27-31**
 - Waterfront Lifeguard Certification



Hawaii BOSS Program
@HIBOSSMWR

Home
About



Any questions can be directed to SSG Brandon Crainich at brandon.a.crainich.mil@mail.mil





WE ARE OPEN!!

Two Locations

SGT Yano Library:

Located on Schofield Barracks

Fort Shafter Library:

Located on Fort Shafter

- Registration online 31 May – 18 July
 - All ages
 - Register online and log minutes
- All badges earned for logged minutes will be entered into a Grand Prize drawing



For more information check out our Facebook Page – Army Hawaii Libraries or email: yanolibrary@gmail.com





Youth Sports & Fitness Camps

Athlete Development Camps

✓ Flag Football and Baseball

- June 23 – 10 July 2020,
- 6/ 1 hour session for each camp, \$30
- Ages 5-15 years old
 - Camp Locations: Bennett Youth Center (North) field 2251 McMahan Rd
 - Safety measurements will be enforced.



Contact Parent Central Services 655-8313
or 655-5314 to sign up or go to:

<https://webtrac.mwr.army.mil/webtrac103/wbwsc/hawaiiicmys.wsc/wbsplash.html>

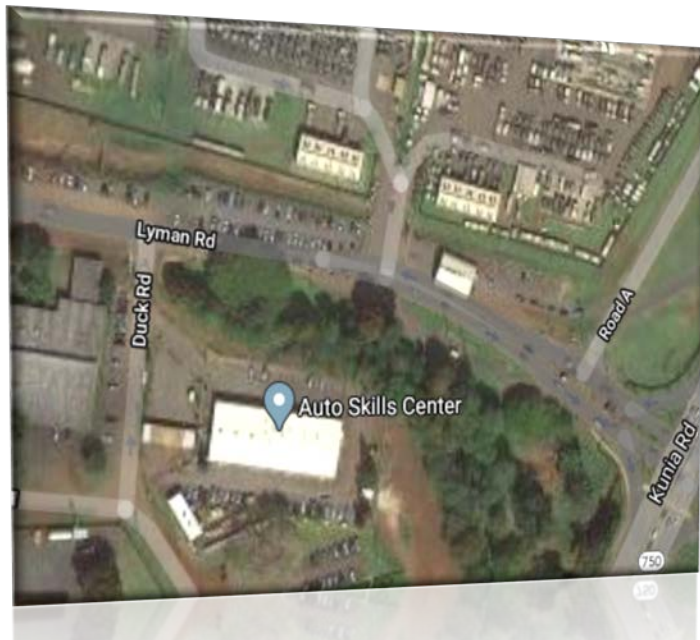




DID YOU KNOW 

Schofield Barracks Auto Skills Center offers Hawaii State Inspections.

**Open Wed-Fri: 11:30 a.m.-7 p.m.
Sun & Sat: 9 a.m.-4 p.m.
Located at 249 Duck Road,
Bldg. #910, near Lyman Gate**





Army Community Service

Army Emergency Relief 2020 Campaign

Due to COVID-19 the AER 2020 Fundraising Campaign has been extended from 1- 31 July 2020!!!!!! Donate today to give a Soldier in need “A Hand Up!”

AER provides financial assistance to Soldiers

Donate today to give a hand up to Soldiers in need

AER was created for times like this

Give.ArmyEmergencyRelief.org/USAG-Hawaii



Detailed Information and Guidelines for this program are available from ACS, (808) 787-4227





Army Community Service



AER

AER

WHO: ARMY EMERGENCY RELIEF
WHAT: HOME SCHOOLING PROGRAM
WHEN: NOW
WHERE: ARMY COMMUNITY SERVICE
EFFECTIVE: 1 Mar 2020

Home schooling assistance will be available in the form of a loan, grant, or GROAN (grant-loan combination) based on a **valid financial need**.

REQUIRED DOCUMENTS:

- Valid military (Army) ID card
- Current End of Month Leave and Earnings Statement (LES)
- Enlisted or Officer Record Brief (ERB/ORB)
- AER Form 101 – Application for Financial Assistance
- Budget - **Required and must demonstrate financial need**
- Title 10 orders for current period of service (National Guard/Reserves, or AGR if applicable)
- Special Power of Attorney (AER Form 53) or Allotment Authorization (AER Form 55) when Soldier is not available.

Receipts are required for school supplies and equipment

Please direct all questions to the Schofield Barracks Office at (808)787-4227.

HOME SCHOOLING SUPPLIES AND EQUIPMENT LIST

Grant consideration items:

- Paper
- Pens & Pencils
- Pencil Sharpener
- Printer Ink
- Scotch Tape
- Notebooks
- Books
- Learning Software
- Educational Software
- Exercise Books (math, vocabulary)
- Post-Its
- Crayons
- Stapler
- Scissors
- Extended WIFI
- Headphones
- Subscriptions to online education portals, but limited to one year only.
- Education Magazine subscriptions, but limited to one year only.

Loan, Grant or GROAN items

- Computers
- Tablets
- Whiteboards
- Calculators
- Keyboard
- Mouse
- Operating System Software (Office Home, etc.)
- Printers
- Enhanced WIFI services. *(Extenders (hardware) are okay, but increasing your subscription service is NOT allowed.)*
- **Other items by exception with approval by appropriate Approving Official**

Detailed Information and Guidelines for this program are available from ACS, (808) 787-4227

AERHQ.ORG





School Liaison Program

Ms. Kim Munoz
Army School Liaison Officer
Child and Youth Services
(808) 655-8326





School Support Services

School Liaison Office

June 24, 10:30a-12:30p, USAG-Hawaii Facebook Page: Virtual Back to School Forum

July 3: Independence Day (Observed). All public schools are closed

August 4: First day of school for public school students

- **School registration is now open:**

- Walk-In registration available during business hours
- Online registration available:

<http://www.hawaiipublicschools.org/ParentsAndStudents/EnrollingInSchool/HowToEnroll/Pages/home.aspx>

- **Hawaii Department of Education Summer Meal Program:**

- For students 18 years old and younger (and students receiving special education services up to age 22)
- Available at select school sites from May 29 – July 17
 - Ka`ala Elementary (lunch only, 11:30a-12:00p)
 - Makalapa Elementary (lunch only, 11:30a-12:00p)
 - For the full list, please visit

<http://www.hawaiipublicschools.org/ConnectWithUs/MediaRoom/PressReleases/Pages/Grab-and-Go-meals-transitions-to-SSO.aspx>

- **Youth Sponsorship Program:**

- For incoming and outgoing Families, please contact the USAG-HI School Liaison Office for transition support
 - Phone: (808) 655-8326
 - Email: usarmy.schofield.imcom-fmwrc.mbx.hawaii-slo@mail.mil





Directorate of Public Works (DPW)

Dave Pawlak
Deputy Director
(808) 656-1289





Schofield Barracks

WHAT: UNSCHEDULED POWER OUTAGES

WHERE: MENOHER SUBSTATION

WHEN: (MAY 13, 18, 24, 30 and 31) and (JUN 03, 13, 16, 19, 22, and 23)

WHO: RESIDENTS/TENANTS – West Campus

WHY:

- The Substation is more than 30 Years Old – Corrosive Environment, lack of Preventive Maintenance, a Reduction of Personnel, Util. Priv.
- Main Breakers continue to Trip without an identified cause
- Each Transformer Contains an Electronic Protection System (EPS)
 - The EPS tracks component or system failures
 - Similar to a “black box” on an aircraft
 - We presume that a failed electronic component within the EPS may be the cause

HOW:

- 09 JUN – Contractor Conducted a Site Visit
- 12 JUN – DPW Fabricated (2) new EPS Enclosures
- 29 JUN – Contractor Start Date Troubleshoot & Repair
- Specialized work - Only Contractor on Island





Schofield Barracks

Daniel K. Inouye School Curbing Project – Ayres Ave.



31 MAR 20: Contract Awarded

29 JUL 20: Contract Est. Completion

Status: 90% Complete

Cost: \$200,820.36





Schofield Barracks

Install Gravel Parking Lot - Watts Field

Closure 24 Hours/Day x 7 Days/Week



Dates:
22 JUN – 24 JUL

Time:
8 a.m.–4 p.m.
(Mon-Fri)

**- Traffic Control on
One Day - TBD**





Wheeler Army Airfield

POWER OUTAGE NOTIFICATION:

Locations Affected: HI Natl Guard, CAB HQ – Bldg. 100, 30th Sign – Bldg. 600
Bowling Alley – Bldg. 835, Chapel – Bldg. 679, Shoppette – Bldg. 102
Courthouse – Bldg. 817, YMCA – Bldg. 122, Barracks – Bldg. 118, 840, 841 and
843, WAAF Gym – Bldg. 113, Air Traffic Tower – Backup Generator



Date:
25 JUL 20
(Sat)

Time:
7 a.m. – 3:30 p.m.

**Purpose: Install
new relays for
Substation
upgrade project.**





Wheeler Army Airfield

Utility Locating (Probing Along Lauhala Road - PHASE 1)

Dates:

18 JUN – 2 JUL

Locate existing underground utility lines in preparation for installation of a water line to transport recycled (R1) water for use on Leilehua Golf Course for irrigation.

PHASE 1

Shoulder Work ahead

Shoulder Work ahead

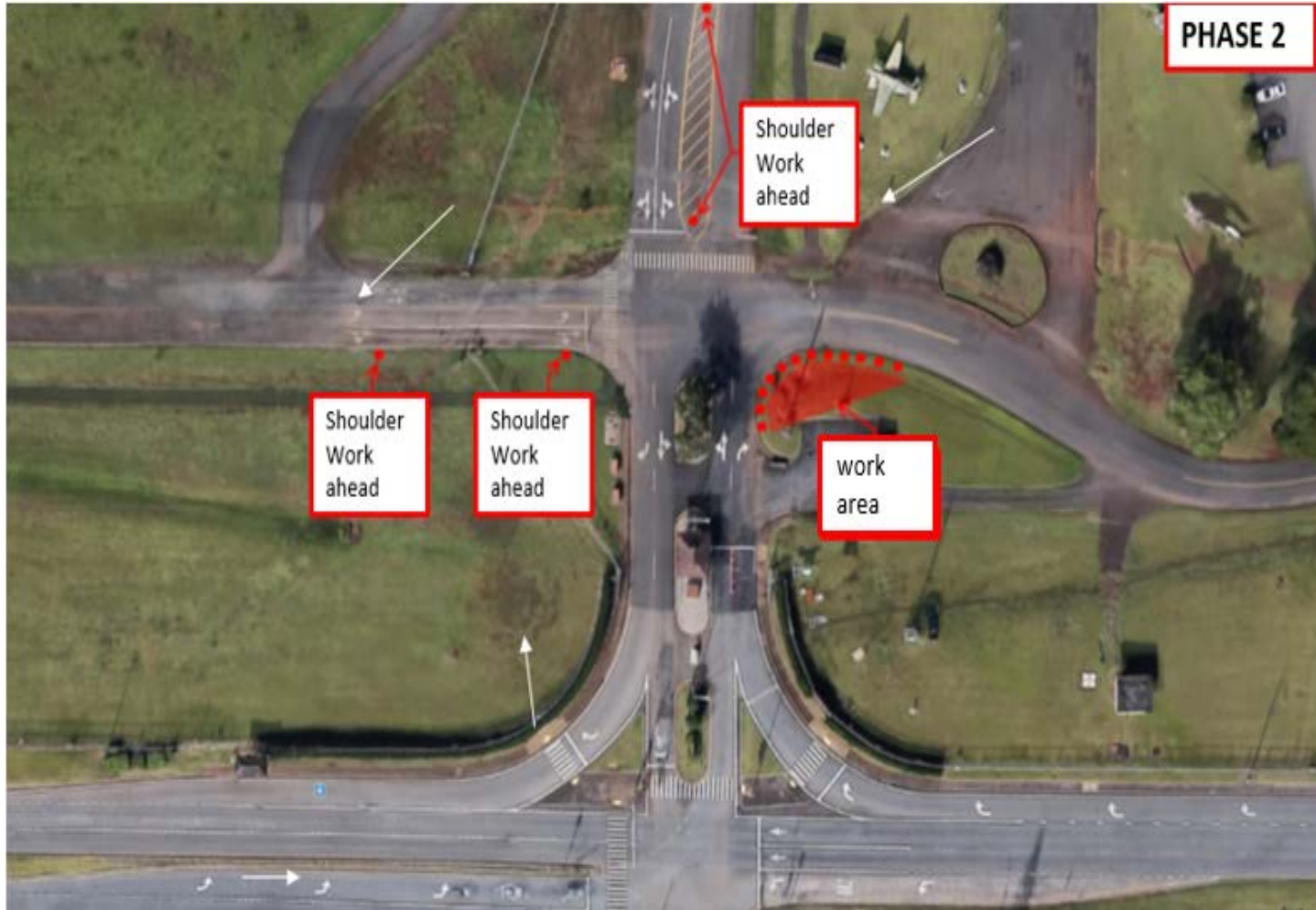
work area





Wheeler Army Airfield

Utility Locating Along Warhawk Place - PHASE 2



Dates:
18 JUN – 2 JUL

Locate existing underground utility lines in preparation for installation of a water line to transport recycled (R1) water for use on Leilehua Golf Course for irrigation.





Wheeler Army Airfield

Utility Locating Along Higgins Road - PHASE 3

PHASE 3

Dates:
18 JUN – 2 JUL

Locate existing underground utility lines in preparation for installation of a water line to transport recycled (R1) water for use on Leilehua Golf Course for irrigation.

End Road Work

Work area

Shoulder Work ahead

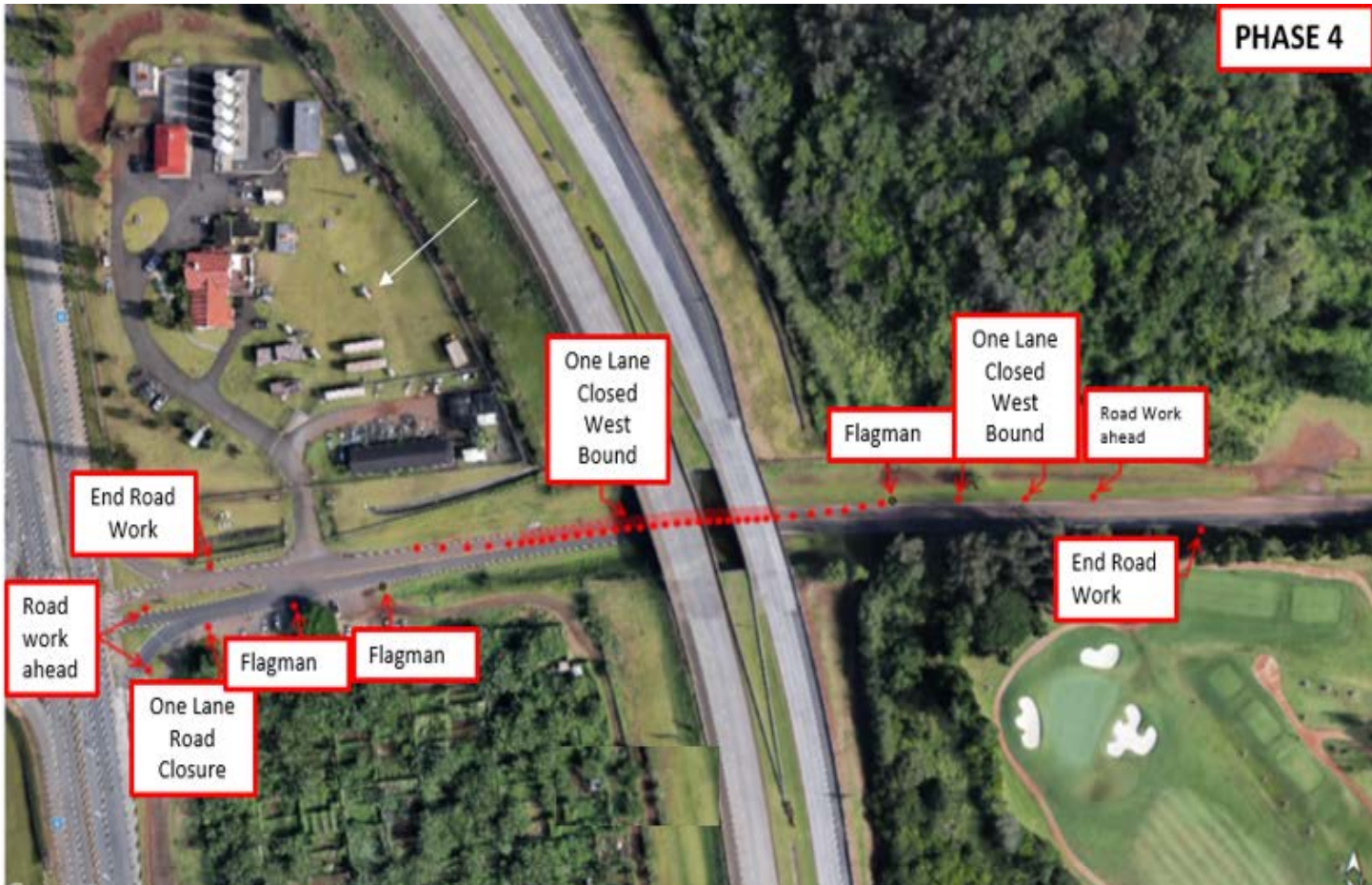
Shoulder Work ahead





Wheeler Army Airfield

Utility Locating Along Higgins Road – PHASE 4



Dates:
18 JUN – 2 JUL

Locate existing underground utility lines in preparation for installation of a water line to transport recycled (R1) water for use on Leilehua Golf Course for irrigation.





Schofield Barracks

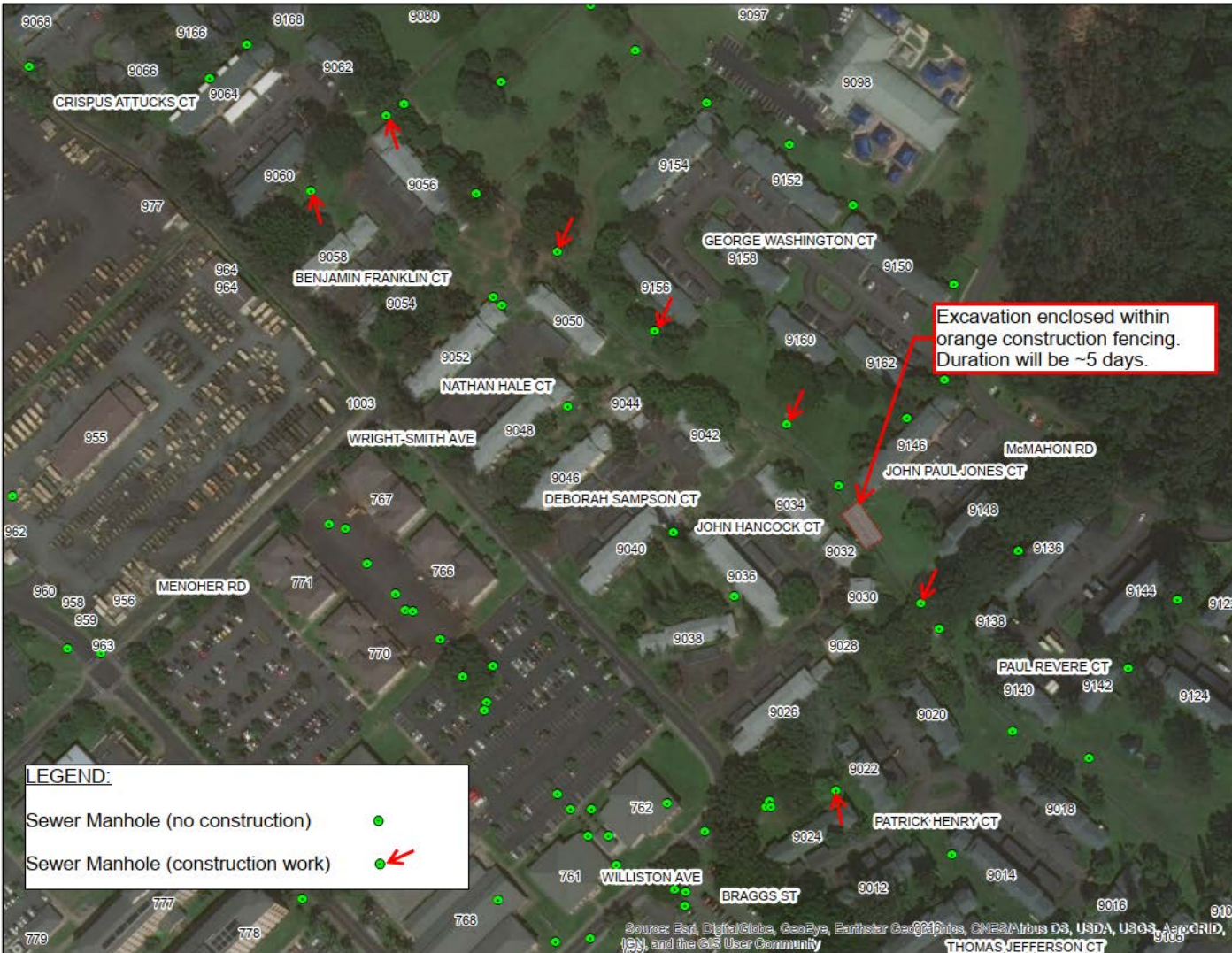
Schofield Barracks 9000- Block

Construction Activities

Dates:
24 Jun – 15 JUL

Time:
8 a.m. – 3 p.m.

Contractors will be working inside a sewer manhole one at a time. The location of these sewer manholes are shown on the attached map. A few vehicles will be parked around these manholes. Construction activities will take place on weekdays.





Housing

Clyde Sage
Chief, Housing Division
Directorate of Public Works
(808) 655-7396





Temporary Lodging Allowance (TLA) – Arrival and Departure

Temporary Policy #06 – Arrival TLA

- ✓ When a Soldier/Family signs in to US Army Garrison Hawaii, TLA may be authorized. While on TLA, Soldier is required to search and secure housing within 45 days of arrival.
- ✓ The 45 day timeline includes 14 days for Restriction of Movement (ROM), and 30 days to search for housing. If housing is secured within 45 days of arrival, up to 60 days of TLA may be authorized depending on the move in date and the delivery of household goods to the residence.

Temporary Policy #06 – Departure TLA

- ✓ The Garrison Commander signed a memo extending Soldier/Family Departure TLA entitlement until 31 July 20, or until Hawaii Governor restriction proclamation is lifted.
- ✓ Virtual Departure TLA brief: Mon-Fri, 8 a.m. @ <https://conference.apps.mil/webconf/TLABrief>, or dial-in over the phone at (410) 874-6300 PIN: 762407436
- ✓ Documents required for Departure TLA are Soldier orders, DA form 31, flight itinerary and the government bill of lading (GBL). Email documents to the Housing Services Office at usarmy.schofield.usag.mbx.housing-services-office@mail.mil, a housing counselor will contact the customer during business hours (8 a.m.-4 p.m.) via email or phone.





Housing Services Office (HSO) - Contacts

HSO Contacts

For questions or concerns, please contact the Housing Services Office (HSO) Branch via the following:

Email: usarmy.schofield.usag.mbx.housing-services-office@mail.mil

HSO Hours: Mon-Fri 8 a.m.-4 p.m.

Phone: 655-3073 or 655-3076





Resolving Housing Issues





Other avenues to seek help

ICE



<https://ice.disa.mil>

Ask the GC



usarmy.hawaii.
askthegc@mail.mil

Health Registry



1-800-984-8523
24/7 resource





Directorate of Emergency Services

COL Michelle Goyette
Director





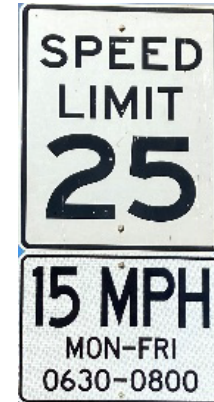
Directorate of Emergency Services

Speeding

An increase in speeding on USAG-HI installations is creating a safety hazard to pedestrians, children, and Soldiers conducting physical training.

As a result, Operation Slow Down (OSD) went into effect on 01 June.

- **342** violations of Operation Slow Down (OSD) since 01 June
 - Speed Limit on Schofield Barracks from 0630 – 0800 Monday – Friday is 15 MPH
- **44** Tickets issued for Speeding (non OSD) since 01 June
- Speed limit on post is 25 MPH unless otherwise posted



Bicycle Safety



- Wear a Properly Fitted Bicycle Helmet
- Control Your Bicycle
- Adjust Your Bicycle to Fit
- Check Your Equipment
- Must wear protective headgear for all wheeled equipment (i.e. scooters, skateboards, roller blades, hover boards, etc.)





Directorate of Plans, Training, Mobilization and Security

Hurricane Preparedness
James 'Jay' Price
Emergency Plans Officer
(808) 656-5362





Hurricane Preparedness

If a hurricane were to hit Oahu today,
would you be ready?

Hurricane season in Hawaii
runs from June-November.





Key Components of Army Ready



GET A KIT



MAKE A PLAN



BE INFORMED





Step #1 Get A Kit

- Water: 1 gallon/person/day for 14 days**
- Food: Non-perishable, ready-to-eat items for 14 days**
- Blankets and change of clothes**
- Flashlight, batteries, and first aid kit**
- Personal hygiene items**
- Reusable plastic plates, cups, and eating utensils**



✓ **Make sure your emergency kit also includes items specific to your special needs, for example:**

- Eyeglasses**
- Medications**
- Infant formula/diapers**
- Food and extra water for pets/service animals**

Additional Items to consider:

- Important family documents in a waterproof container**
- Cash, change or traveler's checks**
- Local maps**
- COVID-19 items such as face-masks, wipes, gloves, and hand sanitizer**





Step #2 Make A Plan & Step #3 Be Informed

Step #2

Making a plan is simple... just think of the 5 Ws!

- Who: Gather input from all family members
- What: Plan for all hazards that could effect your family
- Where: Establish plans for evacuation and meeting places
- When: Review plan annually or as major changes occur
- Why: Having a plan will enable your family to respond to an emergency more quickly

Making an emergency plan is just the first step; you must practice and adjust it to meet your current needs.

Step #3

Methods used to stay informed

- Mass Notification/Giant Voice Warning System**
- ALERTS Telephone/Alerts/Notifications**
 - <https://hnl.info/alerts/login.php>
 - Provides Oahu alerts once you sign up.
- Hawaii State Siren and Emergency Alert System**
- TV/Radio Broadcasts**
- Island Palm Communities Call Max System**
- Garrison Website/Facebook/Twitter**





Resources

Emergency Management Contacts:

Francis Smith

(808) 656-0221

francis.d.smith6.civ@mail.mil

James Price

(808) 656-5362

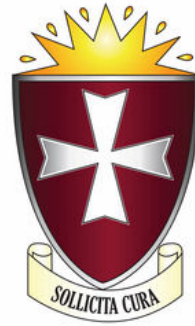
james.h.price.civ@mail.mil

Ready Army: <http://ready.army.mil>





Desmond T. Doss Health Clinic



COL Anthony M. King
Commander
(808) 433-8504

 <https://www.facebook.com/desmond.t.doss.healthclinic/>





Desmond T. Doss Health Clinic

New Normal Patient Experience

- 4 access control points
- Handwashing
- Mandatory mask wearing
- 6 feet distance
- Virtual appointments
- Plexiglas at front desks
- Drive through testing and pharmacy

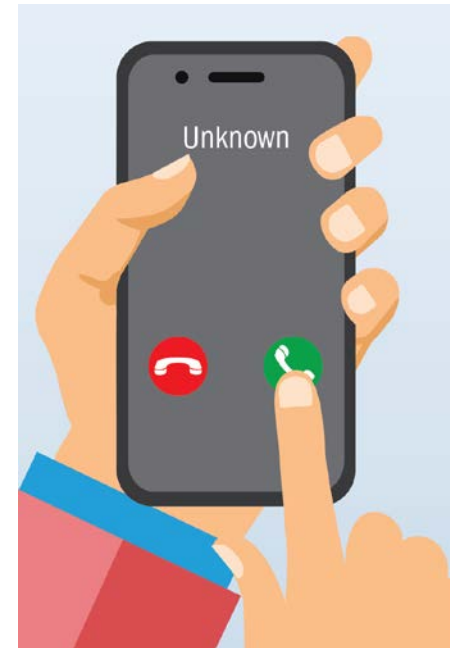




Desmond T. Doss Health Clinic

Virtual Health and Face to Face Appointments

- ✓ **More virtual health appointments where possible**
- ✓ **Provider will call number provided**
 - It may be from an unknown or “blanket number”
 - 3 calls in 10 minutes then marked NO SHOW

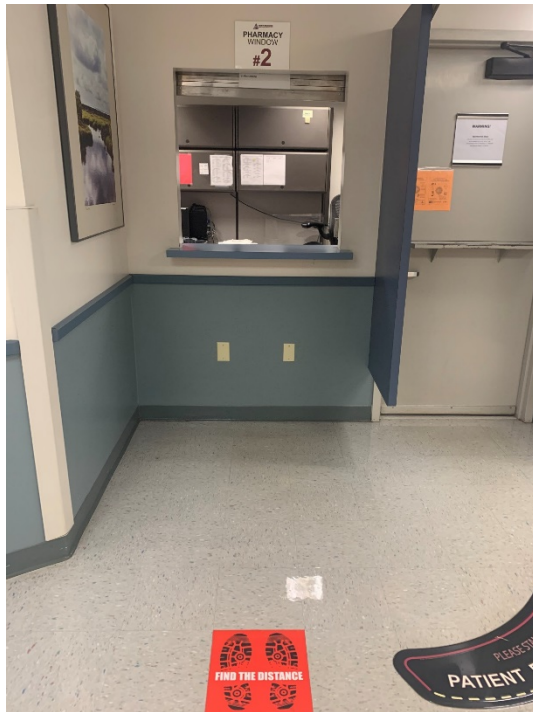




Desmond T. Doss Health Clinic

Drive Through Pharmacy to Transition

- ✓ **Indoor pharmacy operations to begin 1 August**
 - Social distancing in place
 - Limited number of patients in waiting area





Desmond T. Doss Health Clinic

School Physicals

- ✓ **PCMH calling parents to schedule**
- ✓ **Contact care team to schedule**
 - 888-683-2778





Desmond T. Doss Health Clinic

Limited Services July 3, 2020

- ✓ Acute Care and Pharmacy **OPEN**
- ✓ All other services **CLOSED**





Religious Support Office

Chaplain (LTC) Martin Kendrick
Garrison Chaplain
808) 8733





US ARMY HAWAII RELIGIOUS SUPPORT

- Resumed all in-person Religious Services
- **Vacation Bible School** – Main Post Chapel & AMR Chapel 13-17 July 2020
- All virtual religious services are also available and can be found at <https://www.facebook.com/HawaiiRSO/photos/a.442869876070485/1056358161388317>





WILDERNESS ESCAPE

WHERE GOD GUIDES & PROVIDES

COME AS FAMILY AND JOURNEY TOGETHER WITH THE ISRAELITES!
WATCHCARE AVAILABLE FOR AGES 0-3

WHEN: 6-8 p.m., 13-17 JULY, 2020

WHERE: SCHOFIELD BARRACKS MAIN POST CHAPEL &
ALIAMANU MILITARY RESERVATION CHAPEL

For more info visit @Hawaii Chapel Kids and @USARHAW Religious Support on Facebook

*OUR 2020 VBS IS SPECIALLY DESIGNED TO BE ENJOYED AS A FAMILY; NO DROP OFFS WILL BE ALLOWED

**ALL DATES AND DETAILS ARE SUBJECT TO CHANGE BASED ON LATEST HEALTH & SAFETY GUIDANCE IN RESPONSE TO COVID-19



Community Organizations

Island Palm Communities
Schofield Commissary
Schofield Exchange
Lightning Forge
Army National Hiring Days





Island Palm Communities

Rachel Hollaway
Community Services Manager
(808) 275-3159





IPC COVID-19 Operational Updates

- **Community Center Operations**
 - Currently operating by appointment only
 - Self-help delivery service available
 - Lawn equipment now available by appointment only

SELF-HELP Delivery Service



SELF-HELP ITEMS AVAILABLE

- HVAC air filters
- Light bulbs
- Refrigerator water filters
- Vertical blind slats/louvers
- Ant, roach and mouse traps
- Batteries for garage door remote and smoke detectors

•Tennis Courts – Now Open!

Effective Monday, May 18th, pursuant to Mayor Kirk Caldwell's recent Emergency Order No. 2020-11





Sign up for our online Resident Portal today!

Access convenient features right from your PC or mobile device!

- Submit routine service requests and view current work order status.
- View your account balance and pay rent online.
 - *Payments made on the resident portal will see waived transaction fees for the month of June*
- Receive notifications about community announcements and events.
- Electronically submit resident forms.
- Update your contact information and much more!
- **Sign up for the resident portal TODAY!**
 - Visit www.islandpalmcommunities.com
 - Select Residents > Resident Portal to get started





Schofield Commissary

Brad McMinn
Store Director
(808) 655-5066 x3202





News from the Commissary

✓ Updates

- All protective measures put in place at the commissary for HPCON Charlie remain the same for HPCON Bravo
- Availability of sprays, wipes, and alcohol are still spotty
- Beef prices remain high due to availability and supply challenges
- We will open on July 4th from 10 a.m.-6 p.m.





Schofield Main Exchange

Gloria Cho
Store Manager
(808) 622-1773
chogloria@aafes.com





Exchange Concessions

Schofield Barracks

✓ Schofield Food Court Welcomes

HI Blend Café 10 a.m.-6 p.m., Mon-Fri (15 June)

- Smoothies
- Juices
- Acai Bowls/Fruit Bowls
- Salads
- Sandwiches, Panini's and more!





Exchange

- ✓ July 25th – Celebrate 125 years of the Exchange with a cake cutting and giveaways, 11:30 a.m.-1 p.m.
- ✓ Food Court open with limited seating
- ✓ Check out our monthly calendar for upcoming events





Lightning Forge 25th Infantry Division

MAJ John Brasher
25th ID Training
655-5351





U.S. ARMY

Lightning Forge Overview

KAHUKU TRAINING AREA

- Maneuver
- Aviation
- Sustainment

Most Activity

DILLINGHAM

- Sustainment
- Aviation

BASILAN DZ

- Sustainment
- Aviation

LF By the Numbers

Personnel: ~5500
 Helicopters: 37
 Training Days: 10 (24/7)
 Training Areas: 7
 Off Island Personnel: 22

SCHOFIELD EAST RANGE

- Field Artillery (no firing)

SCHOFIELD SOUTH RANGE

- Aviation
- Maneuver

SCHOFIELD BARRACKS

- Mission Command
- Sustainment
- Exercise Support
- Aviation (WAAF)

Increased Activity

1. Lightning Forge (LF) is the 25th Infantry Division's annual training exercise on Oahu. The exercise replicates a combat environment as much as possible to ensure an Infantry Brigade Combat Team can fight and win in war. This is the sixth iteration of LF.

2. LF will take place in July with 2/25 IBCT as the lead training element. A robust aviation task force will support all training.

3. Aviation training will be conducted from three landing zones: WAAF, DAAF, and Basilan Drop Zone (Helemano Plantation). Aviation assets will frequent the Kahukus throughout training.

4. Maneuver training, including blank firing, will be around Schofield Barracks (East Range and South Range), DAAF, and the Kahuku Training Area.

5. No active training over the Independence Day weekend.

1	2	3	4	5	6	7	8	9	10	11	12	13	14	15	16	17	18	19	20	21	22	23	24	25	26	27	28	29	30	31
---	---	---	---	---	---	---	---	---	----	----	----	----	----	----	----	----	----	----	----	----	----	----	----	----	----	----	----	----	----	----

JUL

Independence day Weekend

LIGHTNING FORGE 20

Frequent Military Convoys Along approved routes at approved times

Increased Aviation to and from Training Areas. (Multiple Serials)

Occupy DAAF and Basilan

Weekend

Maneuver near South Range

Clean and Restore Equipment and Training Areas.
 -Wash Vehicles to prevent environment hazards
 -Ensure trash removal

Weekend



Army National Hiring Days

Hawaii Army Recruiting

CPT Webber / 1SG Wilhite
503-490-1472 / 1475

sean.p.webber2.mil@mail.mil
daniel.n.Wilhite.mil@mail.mil





Army National Hiring Days

June 30 – July 2

✓ Army National Hiring Days

- The Army is launching its first all-Army virtual hiring campaign June 30 – July 2. The goal is to hire 10,000 new Soldiers.
- U.S. Army Recruiting Command (USAREC) is adapting how it recruits using virtual tools.
- Individuals can find out more about careers and benefits of service at goarmy.com.
- USAREC has been building its virtual recruiting capabilities and putting capabilities to the test.
- The success of Army National Hiring Days will help USAREC gauge where we are now and how we shape our events and our organization in the future.





Army National Hiring Days

June 30 – July 2

✓ Army National Hiring Days

- How You Should Participate
 - **General officers/SGMs**
 - **Commanders (ACOMs and below)**
 - **All leaders, Soldiers and DA Civilians**





Calendar at a Glance

June 2020

- June 24: Back to School Forum
- June 25-July 31: 25th Infantry Division Lightning Forge Exercise
- June 26: Flying V, 25th ID Deputy CG, Operations

July 2020

- July 4: Independence Day Holiday
- July 8: USO Ribbon Cutting, Fort Shafter
- July 22: 25th ID's Division Artillery (DIVARTY) Change of Command
- July 28: USAG Hawaii Change of Command
- July 29: Chaplain Corps Birthday
- July 29: Community Information Exchange

August 2020

- Aug. 4: Public School Begins
- Aug. 17-31: Rim of the Pacific (RIMPAC) Exercise
- Aug. 21: Hawaii Statehood Day
- Aug. 26: Community Information Exchange
- Aug. 26: Quarterly Housing Town Hall
- Aug. 29-Sept. 2: Commemorating the 75th Anniversary of the End of World War II
- Aug. 29: Queen Liliuokalani Anniversary at Soldiers Chapel

September 2020

- Sept. 2: Sept. 7: Labor Day Holiday
- Sept. 30: Community Information Exchange





Online Resources

Community Resource Guide

- ✓ <https://crg.amedd.army.mil/guides/usarpac/hawaii>

CIE Slides and Community Calendars

- ✓ <https://home.army.mil/hawaii/index.php/garrison/pao/CIE>
- ✓ <https://home.army.mil/hawaii/index.php/my-fort/calendar>
- ✓ <https://www.HiMWR.com>

Directorate of Public Works Updates

- ✓ <https://home.army.mil/hawaii/index.php/my-fort/calendar>
- ✓ <https://www.facebook.com/usaghawaii>

Directorate of Emergency Services Updates

- ✓ <https://www.facebook.com/DES.USAG.HI/>

Emergency Preparedness

- ✓ <https://www.ready.gov/>
- ✓ <http://dod.hawaii.gov/hiema/>

Health Care/Tricare Updates

- ✓ <https://www.dmdc.osd.mil/milconnect>
- ✓ <https://www.Tricareonline.com>
- ✓ <https://www.Relayhealth.com>

Spouses Clubs

- ✓ South: <http://www.fortshafterhui.com/>





Commander's Comments





NEXT

Community Information Exchange

July 29





END OF BRIEF

