

# U.S. Army Garrison Hawaii

## COMMUNITY INFORMATION EXCHANGE



WE ARE THE ARMY'S HOME

October 31, 2024



# Agenda

---

- **Opening Comments**
- **DHR**
- **DES**
- **RSO**
- **PAO**
- **Upcoming Community Events**
- **Questions**
- **Closing Comments**



# Opening Remarks

---

WE ARE THE ARMY'S HOME



— THIS NOVEMBER WE HONOR —

## NATIONAL VETERANS & MILITARY FAMILIES MONTH

Taking Care of Our  
**Military Families**

**MILITARY**  
**ONE**SOURCE

SCHOFIELD BARRACKS &  
TRIPLER EDUCATION CENTERS



WEDNESDAY  
**20 Nov 24**

1000-1600  
604 Ballroom &  
Conference Center  
1260 Kolekole Avenue  
Schofield Barracks  
Bldg. 2060

Over **30+**  
Colleges

10+ Military Resource  
Organizations

*Break-out Sessions*

- 1000- Academic Performance Training
- 1100- College 101
- 1300- Tuition Assistance Brief
- 1400- FAFSA Workshop
- 1500- Credentialing Assistance Brief

**ARMY EDUCATION  
COUNSELORS AVAILABLE!**



For more information **808-787-0640**

- University of Hawai'i at Mānoa- Shidler College of Business
- Purdue Global Campus
- Colorado Technical University
- Touro University Worldwide
- American Military University
- Universal Technical Institute
- ECPI University
- Bellevue University
- Waldorf University
- University of Hawai'i at Mānoa- Library and Information  
Science Program
- Austin Peay University
- Chaminade University of Honolulu
- Kapiolani Community College
- Coastline College
- National University
- Columbia College

# College Education Fair

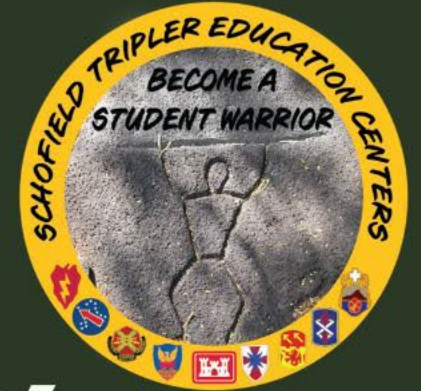
- University of Charleston
- Southern New Hampshire University
- Penn State World Campus
- New York Film Academy
- Columbia Southern University
- Trident University
- University of Nevada, Las Vegas
- Eastern Oregon University
- University of Hawai'i at Manoa-William S. Richardson School of Law
- University of Phoenix
- Norwich University
- Liberty University
- University of Hawai'i at Mānoa- Interdisciplinary Studies
- Grand Canyon University
- Wayland Baptist University
- Embry-Riddle Aeronautical University
- University of Maryland Global Campus
- Hawai'i Pacific University
- University of Arizona Global Campus



Schofield Barracks & Tripler Education Centers

2024

# COLLEGE GRADUATION RECOGNITION CEREMONY



Thursday, 21 Nov 24

## Graduation Recognition Ceremony

- If you graduated or will graduate from an accredited college on or before 31 Dec 24 or you're a 2023 graduate who did not have an opportunity to participate in the 2023 ceremony, we would like to recognize you!
- Please email [timothy.l.mcentire.civ@army.mil](mailto:timothy.l.mcentire.civ@army.mil) or call 808-787-0640 to register today!

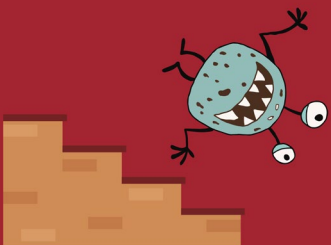
Always trick or treat in groups or with a trusted adult.



Stick to well-lit areas and use sidewalks whenever possible.



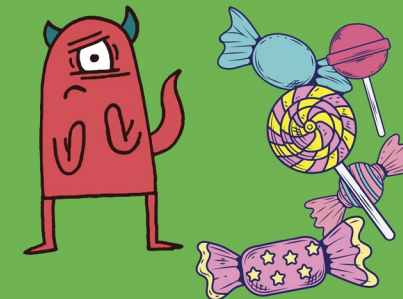
Make sure your costume doesn't obstruct your vision or cause tripping hazards.



# Trick or Treat hours are from 5 to 8 p.m. on Halloween, Thursday, Oct. 31



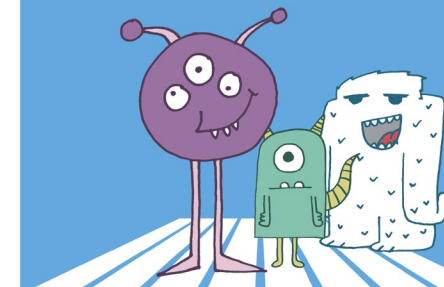
Check all treats for any signs of tampering before eating.



Use reflective tape on costumes or carry a flashlight to be visible to drivers.



Stay on the lookout and be cautious when crossing the streets.



# Helping Hands

## To Donate:

- Scan the QR code on the flyer
- Under “Garrison Religious Support Monetary Contributions” hit “Hawaii”
- Under Category select “Hawaii-Operation Helping Hand-CAJY”  
**OR**
- Donate at any Garrison Chapel Sunday Service during the offering on both 13 and 27 OCT



## FAQs:

Q. How do I check if my Family is eligible for a commissary gift card?

A. Talk with your unit Chaplain or Chain of Command.

Q. When are the gift cards distributed?

A. Unit Chaplains will distribute cards on 18 and 19 November.

Q. Are food donations accepted this year?

A. No, OHH 2024 is focusing exclusively on money donations for gift cards.



# Ocean Safety and Awareness







# North Shore Winter Waves



## **DANGER: Extreme Wave Conditions**

Waves can reach 30-50 feet during winter months



## **Peak Season**

November to February brings powerful storms from the North Pacific, creating massive swells.



## **High-Risk Areas**

- Waimea Bay
- Pipeline
- Sunset Beach

## **Critical Safety Information**

- Strong rip currents make rescues challenging, even for trained lifeguards
- Inexperienced swimmers and surfers should avoid these waters
- Pay attention to posted warning signs and lifeguard advisories
- Waves can sweep beachgoers away without warning

**The North Shore's winter waves are legendary but dangerous. Respect the ocean's power.**

# Key Information

- 🌊 Massive waves (30-50 ft) during winter months
- ⚠️ High risks for inexperienced surfers and swimmers
- 🌀 Strong rip currents and rogue waves endanger beachgoers
- 💀 Annual deaths due to drowning and accidents
- 🚩 Lifeguards and local authorities issue warnings during high surf



## Highly Recommended TTPs for Soldiers and Families

- **Never Turn Your back to the Ocean**
- **Check with Lifeguards** ★
- **When In Doubt, Don't Go Out!**
- **Surfing:**
  - **Take a Surfing Lesson**
  - **Seek advice**
  - **Rent a Softtop from MWR Rec.**
  - **Wear a leash**
  - **Start small**
- **Historically Dangerous Beaches**
  - **Sandy Beach (Bodysurfing)**
  - **Waimea Bay**
  - **Pipeline**
  - **Sunset**
  - **Makapuu**
  - **Pounders**



# HAWAII DROWNING & SPINAL CORD INJURY FACTS



Provided by Injury Prevention and Control System, EMS & Injury Prevention System Branch, Hawaii Department of Health

## FATAL OCEAN DROWNINGS IN HAWAII (2008-2017)



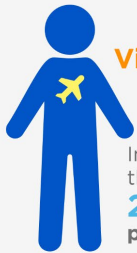
**682** total ocean drownings

**84** ocean drownings in 2017 (highest in the past 10 years)



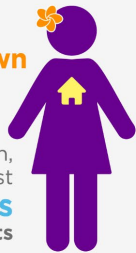
of victims were **visitors**

## DROWNING VICTIMS: VISITORS vs. RESIDENTS (2008-2017)



Visitors are **10X** more likely to drown than Hawaii residents

In the past 10 years, there have been **214 drownings** per 100,000 visitors



By comparison, there have been just **22 drownings** per 100,000 residents

## FATAL OCEAN DROWNINGS BY ISLAND (2008-2017)



**76**

Kauai



**305**

Oahu



**178**

Maui County (Maui, Molokai, Lanai)



**105**

Hawaii Island

## OCEAN ACTIVITIES AND FATAL DROWNINGS (2008-2017)



**183**

drownings occurred during **snorkeling**

(highest of any ocean activity)

**93%**

non-Hawaii residents



**147**

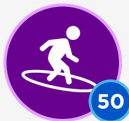
drownings occurred during **swimming**

(2nd highest of any ocean activity)

**60%**

non-Hawaii residents

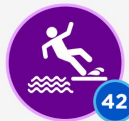
Other activities that have resulted in drownings include:



Surfing/Bodyboarding **50**



Free Diving **46**



Falling/Being Swept In **42**



Scuba Diving **23**



Boating/Kayaking **20**

## SPINAL CORD INJURIES IN HAWAII (2009-2017)

SOURCE: HAWAII TRAUMA REGISTRY



**362**

total spinal cord injuries

**81%**

occurred to non-Hawaii residents

**Maui's Makena Beach** has the highest rate with **40 injuries**, but injuries have occurred at beaches on every major island

## Top 10 Beaches where Spinal Cord Injuries (SCIs) have occurred

- |                          |           |                            |           |
|--------------------------|-----------|----------------------------|-----------|
| 1. Makena Beach, Maui    | <b>40</b> | 6. Brenneke Beach, Kauai   | <b>17</b> |
| 2. Hapuna Beach, Hawaii  | <b>32</b> | 7. Wailea Beach, Maui      | <b>13</b> |
| 3. Kaanapali Beach, Maui | <b>20</b> | 8. Kamaole Beach, Maui     | <b>12</b> |
| 3. Laaloa Beach, Hawaii  | <b>20</b> | 8. Waikiki Beach, Honolulu | <b>12</b> |
| 3. Sandy Beach, Oahu     | <b>20</b> | 10. Polo Beach, Maui       | <b>11</b> |

**142** injuries were the result of **being tossed by wave**



Other activities that have resulted in spinal cord injuries include:



Bodyboarding **82**



Bodysurfing **68**



Diving Into Water **39**



Surfing **31**

## Community Holiday Events

11 NOV, Veteran's Day

11 NOV, O'ahu Veteran's Day Wreath Laying Ceremony (Punchbowl)

20 NOV, Fall Education Fair (SB 604)

21 NOV, Annual Graduation Recognition Ceremony (Sgt. Smith Theater)

2 DEC, North Tree Lighting Ceremony (SB General's Loop)

5 DEC, South Tree Lighting Ceremony (Palm Circle)

14 DEC, Winter Wonderland (AMR)

28 NOV, Thanksgiving

30 NOV, Hilo Christmas Parade (Hawaii Island)

7 DEC, WAAF Pearl Harbor Commemoration 4k Run/Walk (WAAF)

21 DEC, Waimea Christmas Parade (Hawaii Island)

25 DEC, Christmas Day

1 JAN, New Year's Eve

## Religious Support Activities

OCT-NOV, Operation Helping Hand Campaign

9 DEC, 1130, Immaculate Conception Mass, Catholic (SB MPC)

11 DEC, 1800, Catholic Advent Penance Services (SB MPC)

18 DEC, 1800, Catholic Advent Penance Services (AMR)

24 DEC, 1100, Catholic Mass of the Nativity (SB MPC)

24 DEC, 1600, Catholic Christmas Pageant and Concert (SB MPC)

24 DEC, 1700, Catholic Mass of the Nativity (SB MPC)

24 DEC, 1700, Catholic Mass of the Nativity (AMR)

24 DEC, 1700, Protestant Christmas Eve Service (Ft. DeRussy)

24 DEC, 1900, Protestant Combined Christmas Eve Service (SB MPC)

24 DEC, 1900, Protestant Grace Chapel Christmas Eve Service (AMR)

1 JAN, 1130 Catholic Solemnity of Mary the Mother of God (SB MPC)

1 JAN, 1130, Catholic Solemnity of Mary the Mother of God (AMR)



# NATIONAL VETERANS & MILITARY FAMILY MONTH



U.S. ARMY

# QUESTIONS





# Native American Heritage Month

Native American Heritage Month honors the rich cultures, traditions, and contributions of Indigenous peoples, celebrating their profound impact on the United States and their distinguished service in the U.S. Army, where they have served courageously in every major conflict since the Revolutionary War. This month encourages reflection, learning, and a commitment to understanding both the legacy of Native communities and the challenges they continue to face today.



## Closing Remarks