



# Town Hall



WE ARE THE ARMY'S HOME



MG Marcus Evans    Ms. Lori King  
BG David Zinn      Mr. Tony Gainey  
CSM Rob Haynie

United States Army Garrison – Hawaii



## 22 March 2024



# Opening Comments



WE ARE THE ARMY'S HOME



## Agenda

- **What is happening and why?**
- **What are the impacts?**
- **What are we doing?**



## What is happening and why?

- **Schofield Barracks and Wheeler Army Airfield:** 5 pumps provide potable water to storage tanks on the installation.
- **Tuesday:** 3 of 5 pumps inoperable. Immediate repairs begin.
- **Wednesday:** Repairs continue. Part fabrication occurring.
- **Thursday:** Off-post power outage impacts repair timeline; a 4<sup>th</sup> pump begins to fail.
  - Pump capacity  $\neq$  current demand
- **Friday:** 1 of 5 pumps operational. Contingency maintenance and planning focused on restoring pump capacity.



## Impacts?

- **Water Availability:** 1 of 5 potable water pumps is **NOT** enough to supply current demand.
- **Regular Resources:** Select regular resources will be curtailed (next slide) and others will be closed until further notice.
- **Schools:** Impacts to installation schools to be assessed throughout the weekend with the Department of Education.



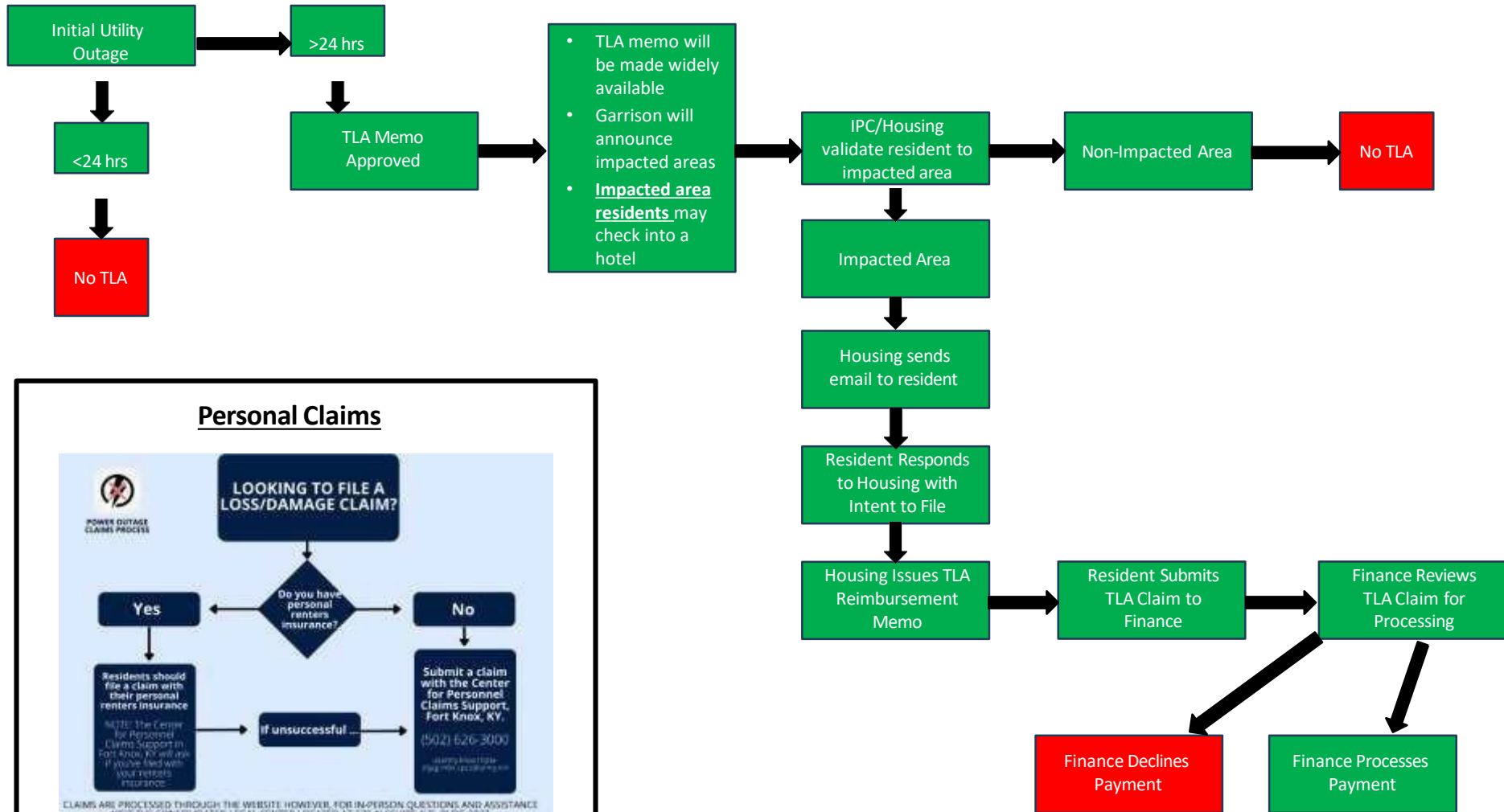
## What are we doing?

- **# 1 Priority:** Increase pump capacity! Coordinate with civilian community for additional water resources.
- **Water distribution points:** Potable water points are activating across Schofield Barracks and Wheeler Army Airfield (next slides).
  - Bring your own bottles and containers!
- **TLA:** TLA will be activated as required within 24 hours of the loss of water. Prioritization will be based on impacted communities. **Schofield Emergency Family Assistance Center (EFAC) – Building 690 open at 1400, 22 March. Open 0700-1900 Daily for assistance.**
- **Closing:** We are closing the following to conserve water:
  - Administrative buildings
  - Showers at the physical fitness centers
  - On-post car washes
  - Chillers—these are air conditioning units that consume potable water
    - This includes administrative buildings, barracks, and other building's air conditioning.
  - On-post pool.
  - Lawn irrigation.

## What are we doing?

- **Remaining Open:** On-post PX, physical fitness centers, commissary, and the Desmond Doss Health Clinic.
- **DFAC:** DFAC “Grab & GO” brunch and dinner remains active (Bronco & Wings of Lightning).
- **Fire Fighting:** Fire response units remain capable and prepared to respond.
- **Future Decisions:** School decisions will be made closer to Monday.

# Temporary Lodging Allowance Flow Chart



### Personal Claims

**LOOKING TO FILE A LOSS/DAMAGE CLAIM?**

Do you have personal renters insurance?

**Yes**

Residents should file a claim with their personal renters insurance.

**No**

Submit a claim with the Center for Personnel Claims Support, Fort Knox, KY. (502) 626-3000

If unsuccessful

CLAIMS ARE PROCESSED THROUGH THE WEBSITE. HOWEVER, FOR IN-PERSON QUESTIONS AND ASSISTANCE VISIT THE CONSOLIDATED LEGAL CENTER LOCATED AT 279 ALESHIRE AVE, BLDG 3007





# TLA Claims Process

Service members must be issued an individual TLA Memo approved by Housing Services to receive TLA.

## Documents required to process your claim:

1. *TLA Approval Memo from Garrison Commander (Finance will retain a copy to add to Service member's submissions if they do not have it in hand)*
  2. *Approved individual TLA Housing Memo authorizing TLA for Service member and dependents  
Itemized lodging zero balance receipt (as applicable - for lodging and meals)*
  3. *PCS Orders and amendments displaying command sponsorship*
  4. *Birth Certificates for any additional dependent born on island and not on PCS orders (as applicable)*
  5. *Command sponsorship memo for any dependent command sponsored after arrival to Schofield Barracks*
  6. *Power of Attorney – If other than Service member is submitting documents*
- TLA is only for authorized Service members and their command sponsored dependents who reside on Schofield Barracks and Wheeler Army Airfield in affected communities.
  - Service members must stay in lodging within the authorized TLA rates. Service members must pay the out-of-pocket difference if their lodging exceeds approved TLA rates.
  - \*\*Finance will verify OCOLA rate in the Service members pay account upon processing of payment. If the Service member is not receiving OCOLA for a command sponsored dependent, you WILL NOT be paid TLA for that dependent and will be referred to their S1 for assistance.
  - The number one thing to remember is: Housing Services is the approving authority for all TLA, and issues the TLA approval memo for each member affected.

# TLA Claims Process

For Schofield Barracks housing residents who lose water and receive a TLA Authorization memo from the EFAC, here are the next steps for you to file for reimbursement.

## Process to receive reimbursement:

Step 1 – The DPW Housing Office (**NOT Island Palm Communities**) will email you asking for information necessary to accurately draft your TLA Reimbursement Memorandum for Finance. They will need to know if you used off-post lodging.

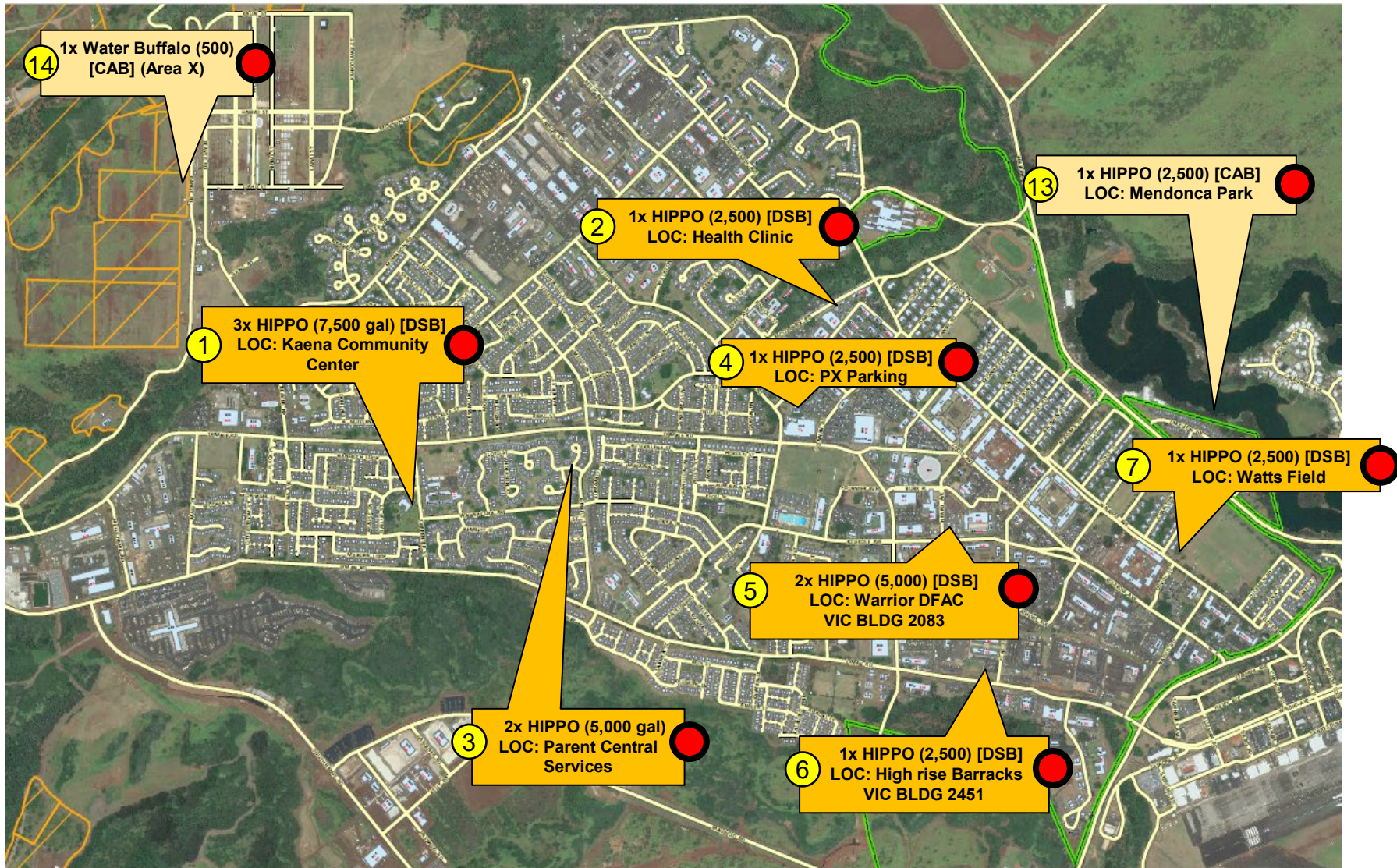
Step 2 – Reply to the email from the DPW Housing and follow the instructions in their email. The sooner you reply, the sooner you will receive the memorandum from Housing that you can take to Finance. NOTE: Given the volume of residents affected, please understand this may take a few days to receive your memorandum as every resident is validated with Housing.

Step 3 – Take all required documents to Finance at BLDG 750 RM 103 (see red font info above) to process your claim. There will be a table set up outside RM 103 to receive documents.

**Please refrain** from visiting the Housing Office this weekend as they are busy processing your memos. Handling customer service questions in person will drastically slow down the process.

Please call 808-655-7700 or e-mail [usarmy.schofield.usag.mbx.housing-services-office@army.mil](mailto:usarmy.schofield.usag.mbx.housing-services-office@army.mil) for more information or questions.

# Schofield Barracks Water Points (25 ID) – DSB/CAB



# Wheeler Army Airfield Water Points (25 ID) – ALL CAB

8 1 ea 500 gal Water Buffalo [CAB] (Streiber Ave Parking Lot)

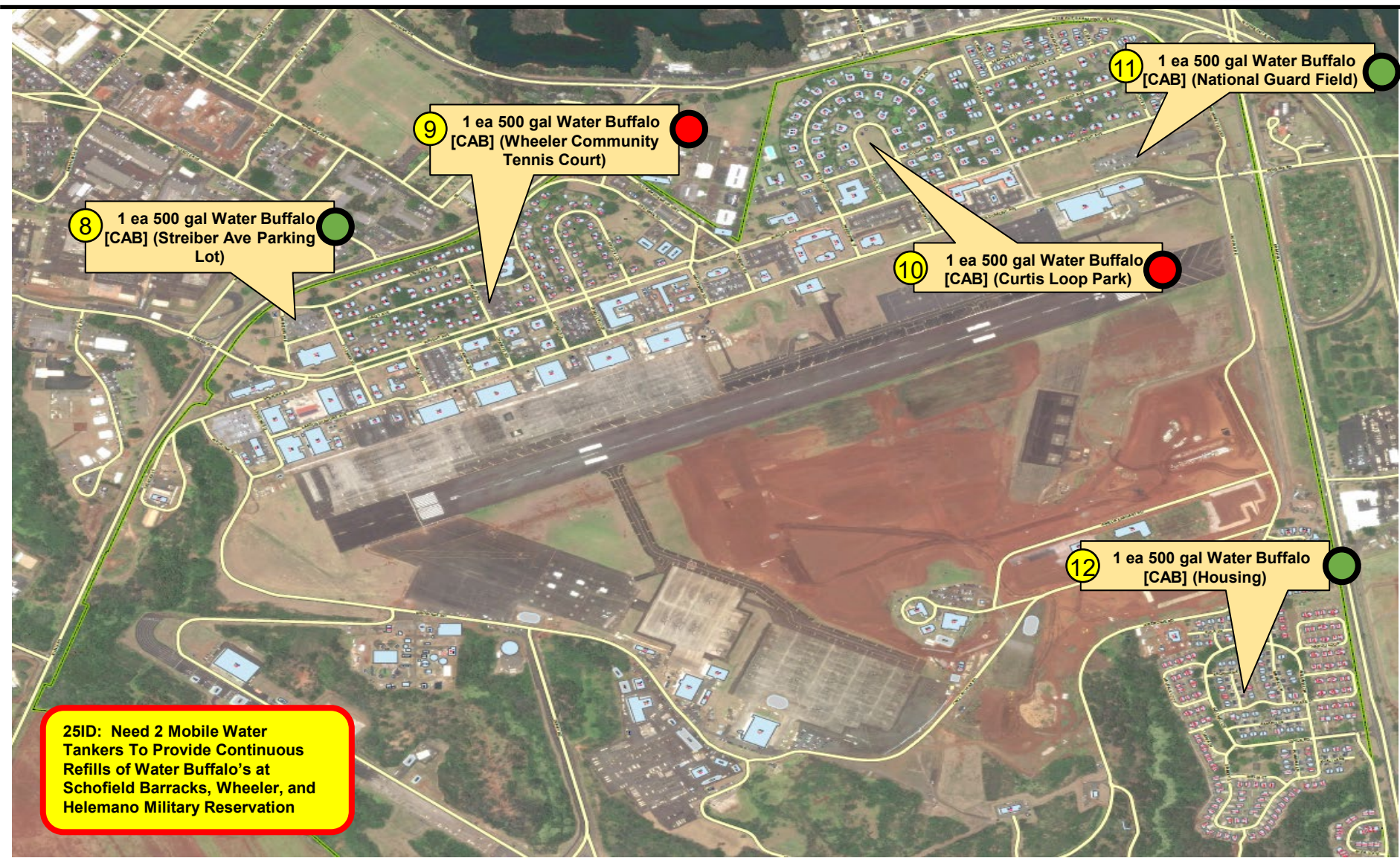
9 1 ea 500 gal Water Buffalo [CAB] (Wheeler Community Tennis Court)

10 1 ea 500 gal Water Buffalo [CAB] (Curtis Loop Park)

11 1 ea 500 gal Water Buffalo [CAB] (National Guard Field)

12 1 ea 500 gal Water Buffalo [CAB] (Housing)

25ID: Need 2 Mobile Water Tankers To Provide Continuous Refills of Water Buffalo's at Schofield Barracks, Wheeler, and Heleman Military Reservation



## Questions



## Closing Comments



# TLA Rates

## ARMY TLA APPROVED HOTELS OAHU

- Daily room rates are set by the Hotel. When making reservations, ensure the room rate is within your TLA authorization.
- Incentives are based off of the TLA Program.
- Rooms with a full kitchen receive half the TLA Meal rate.
- Hotel receipts must be issued through the hotel and not a concierge (Sites like Expedia.com, Hotels.com, etc.)
- Finance DOES NOT REIMBURSE for late checkouts, resort charges & taxes, parking tips, room service.

HOTEL	PHONE	ADEQUATE KITCHEN	ROOM TYPE	PETS
Inn at Schofield 563 Kolekole Ave. Wahiawa, HI 96786	1-800-490-9638 / 808-624-9650 Free Parking, Free Wi-Fi, Convenience store on property	NO	(5)	YES
IHG Army Hotels Bldg. 228-B 1 Jarrett White Road Honolulu, HI 96859	808 839-2336 Free Parking, Breakfast & Internet	NO	(1)	YES ANY PETS NTE 75 LBS.
IHG Army Hotel DVQ 719 Morton Drive Ft. Shafter, HI 96858	808 839-2336 Free Parking, Breakfast & Internet	YES/NO	(5)	YES NTE 75 LBS.
Navy Gateway Inn and Suites 1075 North Road, Bldg. 1623 Pearl Harbor, HI 96860	808-800-2337	YES/NO	(5)	NO
Navy Lodge @ Ford Island 1275 Saratoga Blvd Honolulu, HI 96818	1-800-628-9466 808-440-2290 Free Parking, Wi-Fi, Continental Breakfast	NO	(5)	YES LIMIT 2 NTE 70 LBS.
Inns of the Corps, Lodge at Kaneohe Bay Building 6534 Kaneohe MCBH, HI 96744	808-254-2806 Free Parking, Breakfast & Internet	YES/NO	(5)	YES LIMIT 2 NTE 75 LBS.
Villas Building 6534 Kaneohe MCBH, HI 96744	808-254-2806 Free Parking, Breakfast & Internet	YES	(5)	YES LIMIT 2 NTE 75 LBS.
Navy Gateway Inns & Suites Royal Alakai Inn 15 G. St., Vickers Ave, HI 96853	808-800-2330 Front Desk, press 6 Free Parking & Internet	YES/NO	(5)(1)(2)	YES LIMIT 2 NTE 20 LBS.
Airport Honolulu Hotel 3401 N. Nimitz Hwy. Honolulu, HI 96819	808-372-0587 Free parking/Wi-Fi &/Free Meal Vouchers \$10 value pp a day	NO	(5)	YES
Ala Moana Hotel 410 Atkinson Drive Honolulu, HI 96814	1-800-279-0126 808-921-6888	NO	(5)(1)(2)	NO
Alohilani Resort Waikiki Beach 2490 Kalakaua Ave. Honolulu, HI 96815	808-923-4511 808-922-1233 Waived Amenity Fees	NO	(5)	YES
Ambassador Hotel of Waikiki 2040 Kuhio Ave. Honolulu, HI 96815	1-800-923-2620 808-941-7777 Waived Amenity Fees Parking	YES/NO	(5) (1)	NO
Aqua Ewa Hotel Waikiki 2555 Cartwright Road Honolulu, HI 96815	1-855-945-4092 808-922-1677 Free Parking, Free in-room Wi-Fi No Amenity Fees	YES/NO	(1)(2)(3)	YES NTE 30 LBS.
Aqua Ilikai Hotels & Luxury Suites 1777 Ala Mona Blvd. Honolulu, HI 96815	1-855-945-4092 808-949-3811 Free Parking, Free in-room Wi-Fi No Amenity Fees	YES	(5)(1)(2)	NO

HOTEL	PHONE	ADEQUATE KITCHEN	ROOM TYPE	PETS
Aqua Oasis 320 Lewers Street Honolulu, HI 96815	1-855-945-4092 808-923-2300 Free Parking, Free Wi-Fi No Amenity Fees Complimentary Continental Breakfast	NO	(5)(1)	NO
Aqua Palms Waikiki 1850 Ala Moana Blvd. Honolulu, HI 96815	1-855-945-4092 808-947-7256 Free Parking, Free in-room Wi-Fi No Amenity Fees	YES/NO	(5)(1)	NO
Aqua Skyline at Island Colony 445 Seaside Ave Honolulu, HI 96815	1-855-945-4092 808-923-2345 Free Parking, Free in-room Wi-Fi No Amenity Fees	YES/NO	(5)(1)	NO
Aston at the Executive Centre Hotel 1088 Bishop Street Honolulu, HI 96813	1-855-945-4092 808-539-3000 Free Parking, Free in-room Wi-Fi No Amenity Fees	YES	(5)(1)	NO
Aston at the Waikiki Banyan 201 Ohua Ave. Honolulu, HI 96815	1-855-945-4092 808-922-0555 Free Parking, Free in-room Wi-Fi No Amenity Fees	YES	(5)(1)	NO
Aston Waikiki Beach Hotel 2570 Kalakaua Ave. Honolulu, HI 96815	1-800-877-7666 808-922-2511 Waived Amenity Fees /Free Parking & Internet	NO	(5)(1)	NO
Aston Waikiki Circle Hotel 2464 Kalakaua Ave. Honolulu, HI 96815	1-855-945-4092 808-923-1571 Free Parking, Free in-room Wi-Fi No Amenity Fees	NO	(5)	NO
Aston Waikiki Sunset 229 Paoakalani Ave. Honolulu, HI 96815	1-855-945-4092 808-922-0511 Free Parking, Free in-room Wi-Fi No Amenity Fees	YES	(1)(2)	NO
Bamboo Waikiki 2524 Kuhio Ave. Honolulu, HI 96815	1-855-945-4092 808-922-7777 Free Parking, Free in-room Wi-Fi No Amenity Fees	YES/NO	(5)(1)	NO
Best Western, The Plaza 3253 N. Nimitz Hwy. Honolulu, HI 96819	808-372-0587 Free Parking, Free Meal Vouchers \$10.00/day a person	NO	(5)	YES
Breakers at Waikiki 250 Beach Walk Honolulu, HI 96815	1-800-426-0494 808-923-3181	YES	(5)(1)	NO
Coconut Waikiki Hotel A Joie de Vivre Hotel 450 Lewers Street Honolulu, HI 96815	1-866-974-2626 808-923-8828 Free Wi-Fi/in-room safe No Resort Fees.	NO	(5)	NO
Courtyard by Marriott Waikiki Beach 400 Royal Hawaiian Ave. Honolulu, HI 96815	1-877-995-2638 808-954-4000 Discounted Destination fee \$20/Night) & Discounted Parking(\$35/Night)	NO	(5)(1)	NO

# TLA Rates

HOTEL	PHONE	ADEQUATE KITCHEN	ROOM TYPE	PETS
Doubletree by Hilton Alana-Waikiki Beach 1956 Ala Moana Blvd. Honolulu, HI 96815	808-941-7275 808 951 3141 Waived Resort Fee-\$5/\$15 Parking, Free Internet-Food & Bev. Credit	NO	(5) (1)	YES Limit 2 NTE 50Lbs
Embassy Suites by Hilton Oahu 725 Manawai St. Kapolei, HI 96707	808-674-8222 Free Full Breakfast. \$10.00 Parking	NO	(5)(1)	NO
Embassy Suites Waikiki Beach Walk 201 Beach Walk Honolulu, HI 96815	1-800-362-2779 808-921-2345 Free Breakfast and Internet	NO	(1)(2)	NO
Equus 1696 Ala Moana Blvd. Honolulu, HI 96815	1-877-424-6423 808-949-0061 Discount Parking and Free Wi-Fi	NO	(5)(1)	NO
Hale Koa Hotel 2055 Kalia Road Honolulu, HI 96815	1-800-367-6027 808-955-0555 Free Internet & No Resort Fee	NO	(5)	NO
Hampton Inn & Suites 91-5431 Kapolei Parkway, Suite 900 Kapolei, HI 96707	1-866-406-2782 808-628-4900 Free Parking & Wi-Fi, Cont breakfast	NO	(5)	NO
Harbor Arms Apt. Hotel 98-130 Lipoa Place Aiea, HI 96701	1-800-360-5556 808-488-5556 Free Parking & Internet No Resort Fee	YES	(1)(2)	NO
Harbor Shores Apt. Hotel 98-145 Lipoa Place Aiea, HI 96701	1-800-227-8796 808-488-5742 Free Internet & Parking	YES	(2)	YES
Hawaiian Monarch Hotel 444 Niu Street Honolulu, HI 96815	1-866-293-4738 808-945-3444	NO	(5)(1)	NO
Hilton Garden Inn Waikiki Beach 2330 Kuhio Ave Honolulu, HI 96815	808-892-1863 Discounted Resort Fee (\$20/Night) & Discounted Valet Parking (\$35/Night)	NO	(5)(1)(2)	NO
Hilton Hawaiian Village Beach Resort and Spa 2005 Kalia Road Honolulu, HI 96815	1-800-445-8667 808-949-4321 Non-reimbursable resort fee may apply	NO	(5)	NO
Hilton Waikiki Beach 2500 Kuhio Ave. Honolulu, HI 96815	1-888-243-9252 808-922-0811	NO	(5)	NO
Holiday Inn Express Waikiki 2058 Kuhio Ave. Honolulu, HI 96815	808-748-7103/ 808-947-2828 Waive Amenity, Discount Parking Internet & Free Breakfast	NO	(5)	YES
Holiday Surf Hotel 2303 Ala Wai Blvd Honolulu, HI 96815	808-923-8488 Non-reimbursable resort fee may apply	YES	(5)(1)(2)	YES LIMIT 2 NTE 50LBS.
Hotel La Croix 2070 Kalakaua Ave. Honolulu, HI 96815	808-955-3741	NO	(5)	NO
Hotel Renew 129 Paoakalani Ave. Honolulu, HI 96815	808-687-7700 Waived Amenity Fee/ Free Wi-Fi/ 50% Parking/ 50% Pet Fee	NO	(5)	YES LIMIT 2 NTE40 LBS.
Hyatt Centric Waikiki Beach 349 Seaside Ave. Honolulu, HI 96815	800-237-1234 Free Wi-Fi / Discount Parking Non-reimbursable resort fee may	NO	(5)	YES LIMIT 2 NTE 50 LBS

HOTEL	PHONE	ADEQUATE KITCHEN	ROOM TYPE	PETS
Hyatt Place 175 Paoakalani Ave. Honolulu, HI 96815	1-800-367-5004 808-922-3861 Free Wi-Fi / Buffet Breakfast	NO	(5)	YES
Hyatt Regency Waikiki 2424 Kalakaua Ave. Honolulu, HI 96815	1-800-233-1234 808-923-1234	NO	(5)(1)(2)	YES
Ilima Hotel 445 Nohonani Street Honolulu, HI 96815	1-800-801-9366 808-923-1877 Free Parking & Internet	YES	(5)(1)(2)(3)	NO
Lotus Honolulu @ Diamond Head 2885 Kalakaua Ave. Honolulu, HI 96815	1-866-865-7925 808-922-1700 Free Parking, Free in-room Wi-Fi No Amenity Fees	NO	(5)	YES 1 DOG NTE 20 LBS.
Luana Waikiki Hotel & Suites 2045 Kalakaua Ave. Honolulu, HI 96815	1-855-945-4092 808-955-6000 Free Parking, Free in-room Wi-Fi No Amenity Fees	YES/NO	(5)(1)(2)	NO
Moana Surfrider 2365 Kalakaua Ave. Honolulu, HI 96815	808-922-3111 Non-reimbursable resort fee may apply	NO	(5)	NO
New Otani Kaimana Beach 2863 Kalakaua Ave. Honolulu, HI 96815	1-800-356-8264 808-923-1555	NO	(5)(1)	NO
Ohana Waikiki East 150 Kaiulani Ave. Honolulu, HI 96815	1-800-279-0126 808-921-6888 Discounted Parking	NO	(5)(1)(2)	YES No W/B Restriction
Ohana Waikiki Malia 2211 Kuhio Ave. Honolulu, HI 96815	1-800-279-0126 808-921-6888	NO	(5)(1)	NO
Ohia Waikiki Studio Suites 2280 Kuhio Ave Honolulu, HI 96815	808-926-6442 Free Parking/WiFi, Waived Pet/Amenity Fee. Taxes Included	YES/NO	(5)(1)	YES
Outrigger Reef on the Beach 2169 Kalia Road Honolulu, HI 96815	1-800-279-0126 808-921-6888 Discounted Parking	NO	(5)(1)	YES No W/B Restriction
Outrigger Waikiki 2335 Kalakaua Ave. Honolulu, HI 96815	1-800-279-0126 808-921-6888	NO	(5)	YES No W/B Restriction
Pacific Marina Inn 2628 Waiwai Loop. Honolulu, HI 96819	808-836-1131 Free Parking	NO	(5)	NO
Pacific Monarch Hotel 2427 Kuhio Ave. Honolulu, HI 96815	808-923-9805 50%Parking/Free Wi-Fi/Waived Amenity Fee/Taxes Included	YES/NO	(5)(1)	NO
Pagoda Hotel 1525 Rycroft Street Honolulu, HI 96814	1-855-945-4092/808-941-6611 Free Parking, Free in-room Wi-Fi No Amenity Fees	NO	(5)(1)(2)	YES 1 DOG/CAT NTE 30 LBS
Paradise Bay Resort 47-039 Lihikai Drive Kaneohe, HI 96744	1-800-735-5071 808-239-5711 Free Parking & Internet	YES	(5)(1)	YES LIMIT 2
Park Shore Waikiki 2586 Kalakaua Ave. Honolulu, HI 96815	1-855-945-4092 / 808-923-0411 Complimentary Parking & Wi-Fi No Resort Charge	NO	(5)(1)(2)	NO
Pearl Hotel Waikiki 415 Nahua St. Honolulu, HI 96815	808-922-1616 Waived Amenity Fee, Parking, &	NO	(5)(1)(2)	YES LIMIT 2 NTE 30 LBS



# TLA Rates

HOTEL	PHONE	ADEQUATE KITCHEN	ROOM TYPE	PETS
Prince Waikiki 100 Holomoana Street Honolulu, HI 96815	1-800-321-6248 808-956-1111	NO	(5)(1)(2)	NO
Queen Kapiolani Hotel 150 Kapahulu Ave Honolulu, HI 96815	1-800-533-6970 808-922-1941 Free Parking, Waive Amenity Fees	NO	(5)(1)	YES LIMIT 2 NTE 75 LBS
Ramada Plaza Waikiki 1830 Ala Moana Blvd. Honolulu, HI 96815	808-744-7561 / 808-744-4351 Free Parking, Internet, & Breakfast	NO	(5)	NO
Regency Outrigger 255 Beach Walk Honolulu, HI 96815	1-800-279-0126 / 808-921-6888	YES	(5)(1)(2)	NO
Residence Inn by Marriott Oahu Kapolei 731 Kunehi Street Kapolei, HI 96707	808-674-4480 Free Wi-Fi, & Buffet Breakfast	YES/NO	(5)	YES
Royal Hawaiian 2259 Kalakaua Ave. Honolulu, HI 96815	1-800-325-3535 808-923-7311	NO	(5)	NO
Sheraton Princess Kaiulani 120 Kaiulani Ave. Honolulu, HI 96815	1-888-627-8110 / 808-922-5811 Non-reimbursable resort fee may apply	NO	(5)	NO
Sheraton Waikiki Hotel 2255 Kalakaua Ave. Honolulu, HI 96815	1-808-931-4610 / 808-922-4422 Non- reimbursable resort fee may apply	NO	(5)	NO
Shoreline Hotel Waikiki 342 Seaside Ave. Honolulu, HI 96815	1-866-974-2626 808-931-2444 Free Wi-Fi/in-room safe No resort fee.	NO	(5)	NO
The Laylow, 229 Kuhio Ave. Honolulu, HI 96815	808-922-6600 Free Wi-Fi / Discount Parking Non-reimbursable resort fee	NO	(5)	YES LIMIT 1 NTE 50 LBS
The Surfjack Hotel 412 Lewers Street Honolulu, HI 96815	757-714-0824 / 808-923-8882 Free Parking, Free in-room Wi-Fi No Amenity Fees	NO	(5)(1)(2)(3)	YES
Twin Fin 2470 Kalakaua Ave. Honolulu, HI 96815	1-855-945-4092 808-926-6400 Free Parking, Free in-room Wi-Fi No Amenity Fees	NO	(5)(1)	NO
Vive Hotel Waikiki 2426 Kuhio Ave. Honolulu, HI 96815	808-687-2000 Free Continental Breakfast in-room safe & Internet	NO	(5)	NO
Waikiki Beachcomber 2300 Kalakaua Ave. Honolulu, HI 96815	1-800-279-0126 808-921-6888 Discounted Valet Parking	NO	(5)(1)	YES No Weight/ Breed Restriction
Waikiki Beach Marriott 2552 Kalakaua Ave. Honolulu, HI 96815	1-800-367-5370 / 808-922-6611	NO	(5)(1)(2)	NO
Waikiki Resort Hotel 2460 Koa Avenue Honolulu, HI 96815	1-800-367-5116 / 808-922-4911 50% Amenity Fee/Free Continental Breakfast/Free Parking	YES/NO	(5)	NO
Wayfinder Waikiki 2375 Ala Wai Blvd. Honolulu, HI 96815	808-862-2363 Waived amenity fee/ 50% off parking/ Free Wi-Fi	NO	(5)	YES
White Sands Hotel 431 Nohonani Street Honolulu, HI 96815	1-888-926-6074 /808-924-7263 Waived amenity fee/ 50% off parking/Free Wi-Fi/Taxes Included	NO	(5)(1)	YES

## TLA RATES FOR OAHU

SM Status	Meals	Lodging
Single	102.50	202.00
Married	157.00	202.00
Married w/1 Child	196.25	252.50
1 Over 12	211.95	272.70
Married w/2 Children	235.50	303.00
1 over 12	251.20	323.20
2 over 12	266.90	343.40
Married w/3 Children	274.75	353.50
1 over 12	290.45	373.70
2 over 12	306.15	393.90
3 over 12	321.85	414.10
Married w/4 Children	314.00	404.00
1 over 12	329.70	424.20
2 over 12	345.40	444.40
3 over 12	361.10	464.60
4 over 12	376.80	484.80
Married w/5 Children	353.25	454.50
1 over 12	368.95	474.70
2 over 12	384.65	494.90
3 over 12	400.35	515.10
4 over 12	416.05	535.30
5 over 12	431.75	555.50

\*DO NOT reserve your hotel on websites like, Expedia.com, Hotels.com, etc.

\*Daily room rates are set by the hotel. When making reservations, please ensure the room rate is within your TLA authorization. See below to determine your daily rate.

\* Lodging must be registered by the State of Hawaii as Hotel/ Transient Accommodations for reimbursement.

\*50% for meals in hotels with kitchen.

\*Finance DOES NOT REIMBURSE for late checkouts, resort charges & taxes, parking tips, room service

\*If you are dual military or a single parent please contact the housing office or finance for your actual TLA rate as it is NOT reflected on this chart.