

U.S. ARMY DUGWAY PROVING GROUND

NEWCOMER AND VISITOR GUIDE



CONTENTS



Welcome Letter	3
Accommodations	
On Post.....	4
Near Salt Lake.....	5
Recreation	
National Parks.....	6
Tooele Recreation.....	6
Skiing.....	6
Salt Lake City Recreation.....	6
On-Post	
Recreation.....	7
Schools.....	7
Housing.....	7
Dining.....	8
Commissary.....	8
Post Office.....	8
Religious Services.....	8
Travel.....	9
Fuel Station.....	9
Attire.....	9
Safety Briefing.....	9
Phone/Internet.....	10
Tap Laundry.....	10
Health Screening.....	10
Clearances.....	11
Prohibited & Regulated Items.....	11
Range Control.....	11
Installation Access.....	11
Retreat.....	12
Cameras/Photography.....	12
Security.....	12
Unexploded Ordnance (UXO).....	12
Maps	
Driving Directions.....	13
West Desert Test Area.....	14
English Village.....	15
Ditto Area.....	16
Dugway in Utah.....	17
Post Directory	18/19

WELCOME

U.S. Army Dugway Proving Ground is the Nation's designated Major Range Test Facility Base (MRTFB) for chemical and biological defense. Our mission is to conduct unparalleled testing and evaluation of military equipment and protective gear, as well as provide world-class training to enable our Nation's defenders, inter-agency partners and allies to effectively recognize and counter chemical, biological, radiological and explosive (CBRE) threats. Dugway Proving Ground is a unique place with a highly skilled team of professionals who provide a wide range of support services across its 1,300 square miles of remote, high desert terrain. In addition to its varied and vast terrain and skilled workforce, Dugway offers multiple facilities, many of them one of a kind, to improve our chemical, biological, radiological and explosive (CBRE) defense capabilities to protect our homeland and support our military. We also strive to ensure that every dollar we receive returns the highest value for our customers.

Dugway is a closed post that has all of the attributes of any small town in America. We take great pride in providing exceptional services throughout our small, close-knit community. Environmental and fiscal stewardship are priorities here. Abundant wildlife and the land are protected in accordance with local, state and national environmental policies.

We place safety at the forefront of all we do and we challenge you to do the same. Welcome to the home of Team Dugway. We're glad you're here.

For additional information, please visit our website www.dugway.army.mil or call (435) 831-2929 for assistance.



Scott D. Gould
Colonel, CM
Commanding



Kyle R. Brinkman
CSM, USA
Installation CSM



Aaron D. Goodman
Garrison Manager

ACCOMMODATIONS

IHG Army Hotels/Desert lodge

The IHG Army Hotels/Desert Lodge features 56 extended stay rooms, with kitchenettes, microwaves and safes in every room. Rooms also include standard hotel amenities, including king-sized beds and flat-screen televisions with DVRs. Additionally, four family suites include dishwashers as well.

A complimentary continental breakfast is served in the lobby from 5:30 a.m. to 10:00 a.m. Monday through Friday, and from 7:00 a.m. to 10:00 a.m. Saturday and Sunday.

Desert Lodge guests are invited to attend Social Hour, every Wednesday in the lobby beginning at 5:30 p.m. A complimentary dinner is served.

Get some last minute work done in the hotel Data Center where you will find web connectivity and a printer.

Visit our Sweet Shop for a sweet treat or snack. You will also find a selection of sundries as well as gift items and souvenirs.

Staying on post means you'll be conveniently close to your work and everything else you might need. And since you don't have to be in the military to stay at the hotel, everyone is welcome—no matter the mission.

Guests are encouraged to reserve accommodations well in advance by calling (435) 831-6500. For more information, e-mail tonya.wintle@ihg.com or kathryn.metcalfe@ihg.com or visit www.ihgarmyhotels.com.

Coyote Run RV Camp

Coyote Run RV Park and Campground currently has 33 spots available for self-contained motorhomes, trailers and camping.

The campground is located near our dog park and within walking distance of other programs and services.

Coyote Run RV Park and Campground is convenient for short-term camping.

We also provide a great long-term camping option, whether you are looking to stay the full week or just through the work week. We have many services to offer within a convenient distance, so come and check us out.

Spots are available on a first-come, first-serve basis and no reservations are accepted.

There is a dump station located at our vehicle wash station on Stark Road (Bldg. 5803) when needed.

All administrative needs are handled at Shocklee Fitness Center and the MWR Outdoor Recreation Center.

For more information contact Shocklee Fitness Center & Outdoor Recreation Center at (435) 831-2705/2318 or e-mail john.c.forte.naf@mail.mil



Desert Lodge

ACCOMMODATIONS

Near Salt Lake International Airport

**Best Western Plus
Airport Inn & Suites**

5433 W. Wiley Post Way
Salt Lake City, UT 84116
(801) 428-0900

Comfort Inn, SLC Airport
200 N. Admiral Byrd Rd.
Salt Lake City, UT 84116
(801) 746-5200

Courtyard by Marriott
4843 W. Douglas Corrigan Way
Salt Lake City, UT 84116
(801) 532-4085

DoubleTree by Hilton, SLC Airport
5151 W. Wiley Post Way
Salt Lake City, UT 84116
(801) 539-1515

Fairfield Inn by Marriott
230 N. Admiral Byrd Rd.
Salt Lake City, UT 84116
(801) 355-3331

Hampton Inn & Suites
307 N. Admiral Byrd Rd.
Salt Lake City, UT 84116
(801) 530-0088

Hilton Garden Inn
4976 W. Wiley Post Way
Salt Lake City, UT 84116
(801) 519-9000

Hyatt Place, SLC Airport
52 N. Tommy Thompson Rd.
Salt Lake City, UT 84116
(801) 363-1400

LaQuinta Inn & Suites
4905 W. Wiley Post Way
Salt Lake City, UT 84116
(801) 366-4444

Ramada Inn, SLC Airport Hotel
5575 W. Amelia Earhart Dr.
Salt Lake City, UT 84116
(801) 537-7020

Residence Inn by Marriott
4883 W. Douglas Corrigan Way
Salt Lake City, UT 84116
(801) 532-4101

Super 8, SLC Airport
223 Jimmy Doolittle Rd.
Salt Lake City, UT 84116
(801) 533-8878

Tooele

Best Western Inn
365 N. Main St.
Tooele, UT 84074
(435) 882-5010

Comfort Inn & Suites
8580 N. Highway 36
Tooele, UT 84074
(801) 250-3600

Hampton Inn
461 S. Main St.
Tooele, UT 84074
(435) 843-7700

Holiday Inn Express & Suites
1531 N. Main St.
Tooele, UT 84074
(435) 833-0500

Hotel American
491 S. Main St.
Tooele, UT 84074
(435) 882-6100

**Note: there are no services between
Tooele and Dugway Proving Ground.**



Downtown Salt Lake City

RECREATION

Utah National Parks

There are five national parks in Utah:

- **Arches** - Preserves over 2,000 natural sandstone arches.
- **Bryce Canyon** - A huge series of natural amphitheatres famous for its rock formations called "hoodoos."
- **Canyonlands** - A colorful maze of canyons, mesas and buttes.
- **Capitol Reef** - Encompasses Waterpocket Fold, a huge warp in the earth's crust.
- **Zion** - Home to some of the most breathtaking geology in North America, you have to see it to believe it.

For more information, please visit the National Park Service website, www.home.nps.gov/state/ut/index.htm

Things to do in Tooele County

Dugway Proving Ground is located in Tooele (Too-will-ah) County, the second-largest county in Utah totaling nearly 7,000 square miles. Within its boundaries, you'll find towering mountains, lush forests and valleys, the largest salt water lake in the Western Hemisphere and the Bonneville Salt Flats, a dazzling expanse of hard, white salt crust known to land-speed racing enthusiasts around the globe.

Tooele County's dramatic and diverse landscape offers endless outdoor activities, interesting historical sites, and entertaining attractions.

Visit www.visittooelecounty.com for more information.

Utah Skiing

Utah was home to the 2002 Winter Olympics, and has 14 world-class ski resorts where snow enthusiasts can enjoy alpine and cross-country skiing, snowboarding and showshoeing. Eleven resorts are within an hour of Salt Lake City. Averaging 500 inches of light, dry powder annually, Utah features some of the best skiing in the world.

For more information about area resorts, visit <http://www.skiutah.com/>

Things to do in Salt Lake City

Salt Lake is a thriving city with plenty to keep you busy. Explore the Utah Museum of Natural History or The Leonardo at Library Square. Attend a performance of the Utah Symphony or Opera.

There are many recreational opportunities, including golf courses, city parks, Hogle Zoo, as well as spectacular canyon hiking trails.

Salt Lake is home to Utah Jazz basketball, as well as Salt Lake Bees baseball, Real Salt Lake soccer, and Grizzlies hockey.

Many cultural events take place every year, including the Sundance Film Festival and Salt Lake City International Jazz Festival. The Salt Lake Arts Council produces many public programs and outdoor concerts as well. And don't miss the the Downtown Farmers Market at Pioneer Park, every Saturday during the summer.

For more info, please visit www.visitsaltlake.com



Snowbird Ski Resort near Salt Lake City

ON-POST

DPG provides a variety of activities to do on post:

- **Fitness Center** - A 32,000 square foot fitness center with a wide variety of cardio and strength conditioning options. It also offers basketball courts, an indoor track and racquetball courts.
- **Swimming Pool** - Open to Dugway personnel and residents Memorial Day weekend through August.
- **Library** - Over 25,000 books, movies, audio books, and more.
- **Outdoor Recreation Office** - Offers rental equipment, group trips and more.
- **Ditto Gym** - Building 4166 in the test area, behind the Chem Lab, provides access to fitness equipment 24/7.

Housing

DPG provides a variety of on-post housing options: 1-bedroom dormitories and 2-bedroom housing units are available to single individuals, and 3-bedroom units and detached homes are available to families.

Because Dugway is remote, there is a high demand for on-post housing. Housing is subject to availability, and there is usually a waiting list.

For more information about on-post housing, or to sign up for the waiting list, please call the Housing Office at (435) 831-3541.

Schools

Built in 2016, the Dugway school houses students from kindergarten through high school and is under the jurisdiction of the Tooele County School District (www.tooele.k12.ut.us). The size and location of Dugway dictates small class sizes (usually less than 20 students), which allows for individualized attention and a high-quality education.

Child care and after-school programs are available:

- **Child Development Center (CDC)** - Care for children younger than school age.
- **School Age Services (SAS)** - After-school programs for 1st through 6th grade children.
- **Youth Services (YS)** - After school programs for kids in middle and high school.

Balloons with messages released by Dugway schoolchildren

ON-POST

Dining

Breakfast and lunch are served Monday through Thursday at the Ditto Diner in the test area.

The Dugway Community Club is also available for catered events as well as providing contract meals for training units.

A selection of sandwiches, snack foods and microwaveable items are available at the Dugway Exchange Express/Gas Station.

Commissary

Dugway's location allows all residents, including military, government civilian personnel and contractors to shop at the full-service commissary.

Looking for something special or an item not commonly stocked? Have the Commissary place a special order.

Hours are Monday through Thursday from 11 a.m. to 7 p.m., Friday from 9 a.m. to 4:30 p.m. and Saturday from 10 a.m. to 5:30 p.m. The commissary is closed on Sundays.

For more information, call (435) 831-2614 or (435) 831- 2165 during the hours listed above.

Post Office

The Post Office is located in building 5326 in English Village.

The Post Office hours are Monday through Friday from 9 a.m. to 4 p.m., and Saturday from 9 a.m. to 11 a.m. For more information about post office services call (435) 831-4261.

Religious Services

Dugway Hope Chapel hours are Monday through Thursday, 8:30 a.m. to 5:00 p.m.

Protestant/nondenominational service: Sunday, 11:00 a.m.

Catholic Mass: Thursday, 6:00 p.m.

For more information on other chapel activities or services, please call (435) 831-2431.



Portable Climbing Wall at Independence Day Celebration

ON-POST

Travel

Travel time from the Salt Lake City International Airport to the main gate at Dugway Proving Ground is approximately 1 hour, 30 minutes. Travel time from Tooele to the main gate at DPG is approximately 45 minutes. Refer to the maps included in this guide for directions on both routes.

Much of the route south of Interstate 80 on Highway 196 and west of Rush Valley on Highway 199 is open range; there are no fences to keep cattle and wildlife from the roadway.

Use extra caution in open range areas, especially at night or during storms. Antelope, deer and cattle are common and are not easily seen on the roadway at night. Be wary as you approach blind curves and the backside of hills.

Fuel Station

Refuel or top off at the Dugway Exchange Express prior to leaving the post. If going to Tooele, the nearest fuel station is 35 miles. If driving Highway 196 (Skull Valley Road) the nearest fuel station is over 50 miles.

An ATM is also located at the Dugway Exchange Express.

A limited selection of sandwiches, snack foods and microwaveable items is available at the Dugway Exchange Express.

Attire

Utah's climate can vary significantly from season to season, so visitors are advised to pack for high temperatures during the summer months, upwards of 100 degrees Fahrenheit, and cool temperatures at night. Light clothing and sunglasses, a rain jacket, and a long-sleeved shirt, sweater, or jacket for the evening should be sufficient for summer visits. Attire recommendations apply to the labs as well as the field. Spring and fall are mild, with winter temperatures averaging 30 degrees Fahrenheit. Wind speeds up to 60 mph are not uncommon on active test and training ranges, with the possibility of flash thunderstorms during the summer. Range hazards, including tripping and falling, warrant the use of long pants and closed-toed shoes.

Safety Briefing:

- For your safety, please follow and comply with all safety guidance, to include signs, placards and escort instructions.
- To avoid heat stress symptoms, please ensure adequate hydration, rest periods, recommended attire and sunscreen.
- Wildlife: please do not disturb their habitat or feed, water or approach.
- Unimproved range road speed is 35 mph. Cellular phone use while driving on or off the installation is prohibited unless a hands-free device is used. Texting while driving is illegal.
- Always drive alert by avoiding fatigue and driver distractions. Drive sober. Avoid speeding and keep your distance using the 4-second rule. Adjust your speed to changing weather conditions. Use your seat belts at all times.
- An emergency car kit for traveling in the west is highly recommended.

ON-POST

Phone/Internet

Dugway Proving Ground is within one of the most remote areas of the lower 48 states. Much of the surrounding area has no cell phone coverage.

The DSN telephone prefix is 789. To call out from an office phone, dial 94 for DSN. Dial 99 for a local number, and dial 98 for long distance. Wait a second or two, then dial the number. Please note that calls to and from Tooele are local, while Salt Lake calls are long distance. You will need to use area codes when calling someone further away than Tooele.

To call Dugway from off-post, please dial (435) 831-xxxx, where xxxx represents the extension you are trying to reach.

Internet access is available at the post Library in the Community Center building, and at the Desert Lodge Data Center.

Telephone service, cable TV and Internet service is available to residential customers on Dugway. For more information about current services call the Housing Office at (435) 831-3541.

TAP Laundry

If your visit will require the use of Personal Protective Equipment (PPE), TAP Laundry can fit test you with M50 protective masks and respirators. Emergency escape bottles and Toxicological Agent Protection (TAP) gear will be issued here as well. For additional information, please contact TAP Laundry at (435) 831-5262.

Health Screening

If your visit to the Test Center or Chemical Facility will require the use of a respirator or M50 protective mask, you are required to undergo a health screening and obtain a medical clearance. A mask or respirator clearance form is available through your point of contact (POC). Please call for an appointment two weeks in advance.

For additional information, or to schedule an appointment, please contact the Health Clinic at (435) 831-2211.



Camel's Back Mountain, Ditto area

ON-POST

Clearances

If you are a Foreign National contractor, contact the Intelligence Office one month prior to your arrival at DPG. All Foreign Nationals are required to be escorted at all times in the test areas. Foreign National visitors may move freely when staying in English Village. For more information contact:

DPG Security Management Office
Phone: (435) 831-2718
Fax: (435) 831-2284

Prohibited and Regulated Items

Alcohol is prohibited past Access Control Point (ACP) #2.

Cameras, weapons and ammunition may only be brought on post with proper, prior authorization. Please contact your sponsor, POC or Dugway Public Affairs Office for more information.

Range Control

Encompassing over 1,300 square miles, DPG is a vast installation. As safety is paramount, it is imperative that your whereabouts are known. Prior to going west of Ditto, you are required to clear access through Range Control. Contact them by radio (call sign "Range Control"), or telephone at (435) 831-5141. A map of West Desert Test Areas is included in this packet for your reference (page 15).

Installation Access

All visitors should have a sponsor or POC prior to accessing Dugway. Your sponsor should place your name in the e-Advance Visitor Pre-registration system. The following information is required:

- Full name
- Date of birth
- Citizenship
- Dates of visit
- Reason for visit
- Access level
- Drivers license (issuing state and license #)

Any visitor to Dugway Proving Ground may be subject to an III (Interstate Identification Index) Background Check.

Be ready to show your current vehicle registration and current driver's license at the main gate. Ask your DPG sponsor or POC to request a visitor pass if you are going into the test area. He or she should also indicate the area you will be visiting to obtain proper clearance on the visitor pass. Please keep in mind that many offices at DPG are only open Monday through Thursday from 7 a.m. to 5:30 p.m.

Be aware that your vehicle may be searched upon entrance and is subject to search at any time while on the installation.

Please be aware that Dugway has a Chemical Agent Incident Response Assistance (CAIRA) and Biological Mishap Incident Response (BMIR) system. If at any time you hear a siren, please proceed to the nearest building and stay inside until cleared to leave.

ON-POST

Retreat

Retreat is played every day at 5:00 p.m.

American citizens must stop to render respect; Foreign Nationals should stand and face the flag, hands at the side, until the playing of Retreat is completed.

Cameras/Photography

Camera passes are not required in English Village. However, taking photos and video of the Main Gate and its personnel are strictly prohibited.

Foreign visitors are prohibited from taking photographs or video and will not be issued a camera pass while on the installation.

Camera passes are issued on an as needed work basis and only if the Optics Division cannot support photographic needs.

A camera pass is required west of Access Control Point (ACP) #2. You must use a government/company owned camera or cell phone. Photography is authorized ONLY in approved areas and no personal photography is allowed.

All imagery must be reviewed by the Security Management Office, or the Optics Division prior to exiting the installation.

Photos intended for public release must also be reviewed and approved by the Dugway Public Affairs Office.

Please coordinate your photographic requirements with your DPG POC as early as possible.

Security

Dugway has diligent law enforcement officers who strictly enforce seat belt use and posted speed limits. Officers also enforce the “Zero Tolerance” drinking and driving policy.

Cell phone use while driving on Dugway is strictly prohibited as it is throughout Utah. Be aware that security and law enforcement have the authority to ticket anyone violating this policy.

Call (435) 831-2000 for information regarding inclement weather or other situations that might cause the installation to delay opening hours or be closed.

UXO

Unexploded ordnance (UXO), may work its way back to the surface. Visitors planning to travel past ACP #2 must review and sign the “Unexploded Ordnance (UXO) Range Hazards Orientation, DP-CMSA Form 3.” This form is required for all visitors traveling past ACP #2 and will be provided by your designated host, installation PAO, Protocol Officer or Installation Safety Office. If during the course of your travels you notice a suspicious item, DO NOT TOUCH IT! Mark the spot and contact law enforcement and security at (435) 831-2933.

DRIVING DIRECTIONS



From Salt Lake City

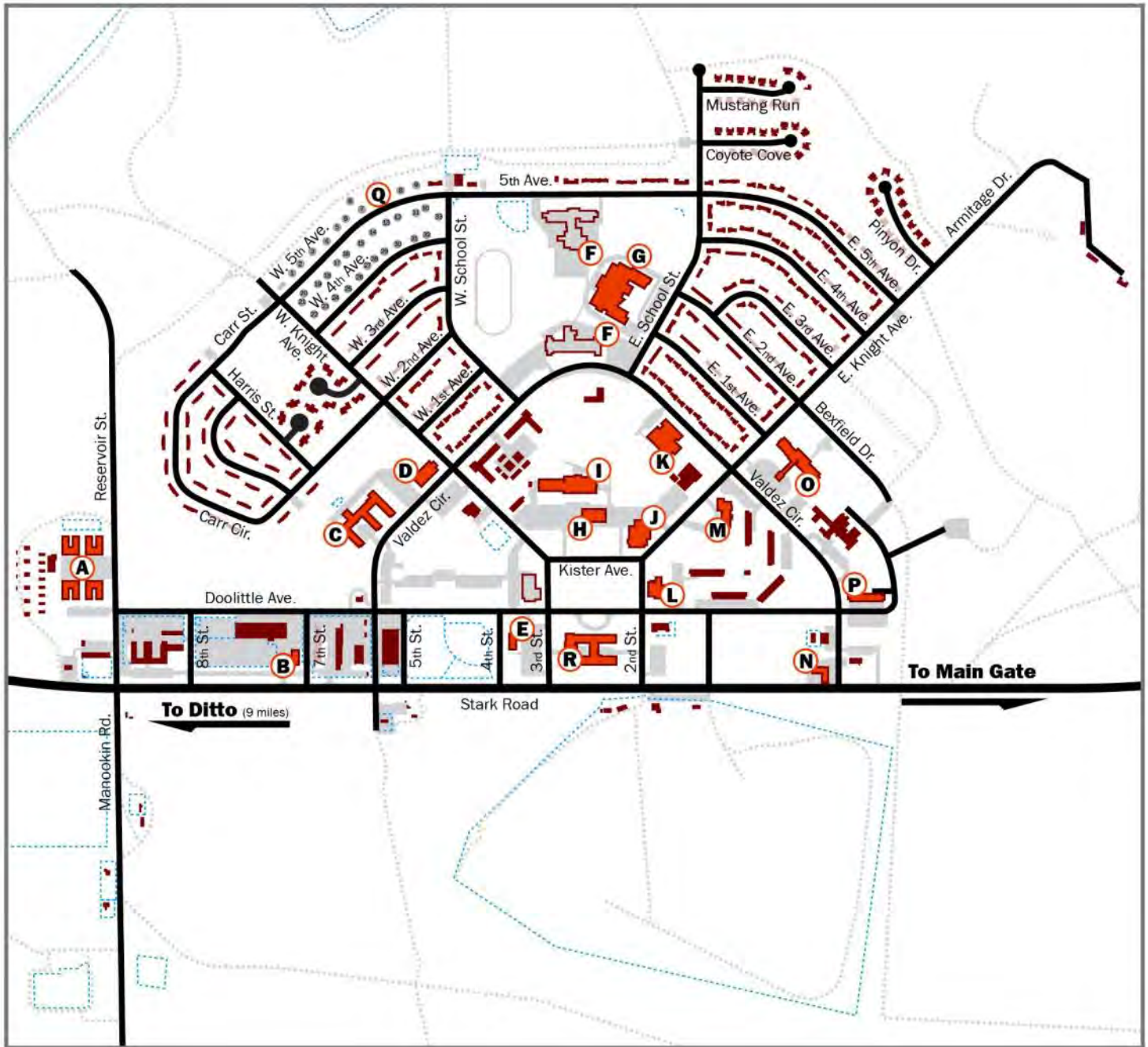
1. Travel west on I-80
2. Exit at the Dugway/Rowley exit (Exit 77)
3. Turn left at the bottom of the ramp
4. Head south on Skull Valley Road to Dugway Proving Ground (approximately 37 miles)

From Tooele

1. Travel south on Route 36 (Main Street, Tooele)
2. Continue through Tooele and Stockton
3. Turn right onto Route 199
4. Follow 199 over Johnson's Pass to Dugway Proving Ground

Note: there are no services between Stockton and Dugway. Please make sure you have enough gas.

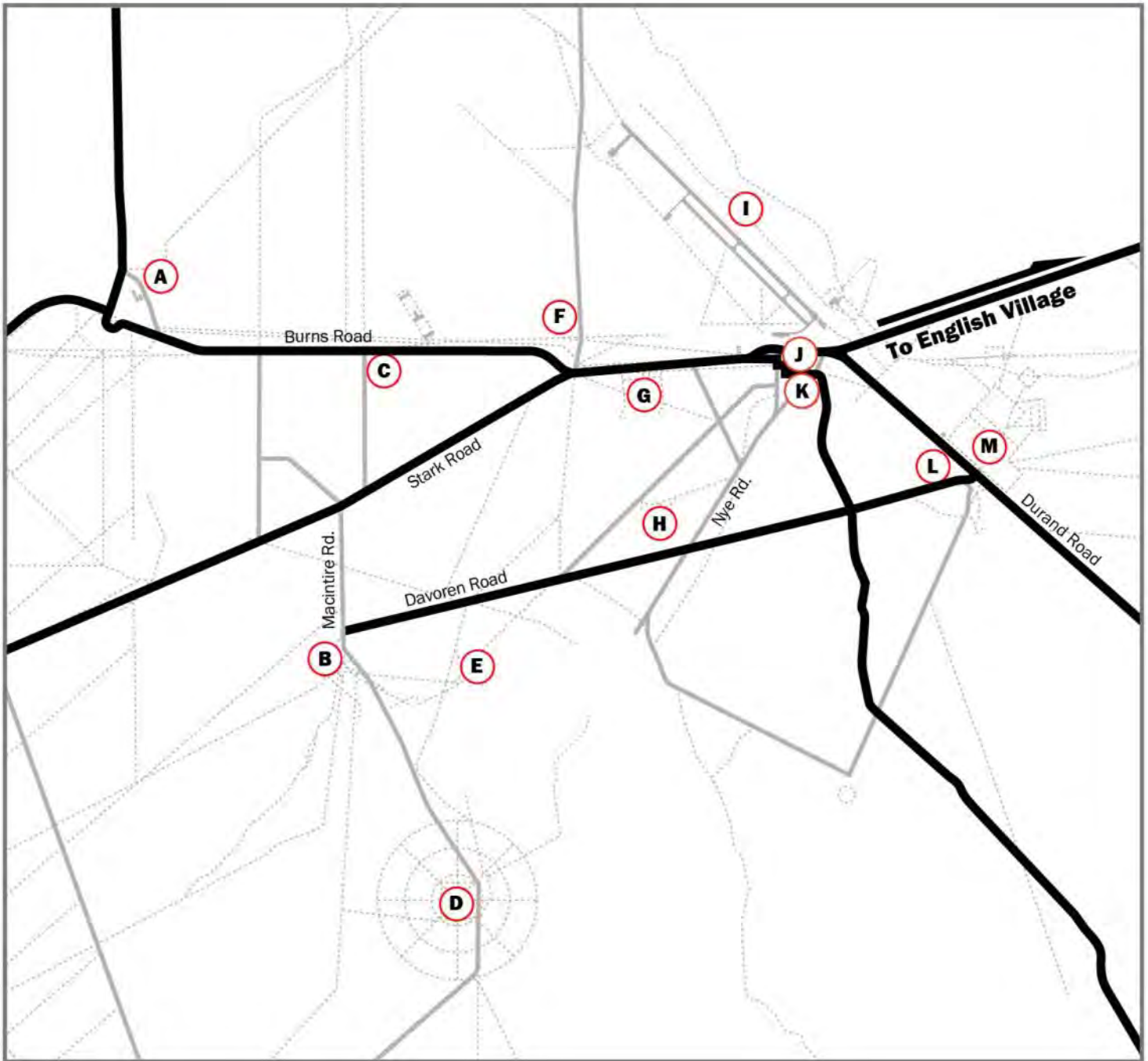
ENGLISH VILLAGE



Map Key

- | | | |
|-----------------------------------|------------------------------------|-------------------------------------|
| A. Bullene Barracks | F. Old Elementary & High Schools | M. Community Club |
| B. Motor Pool | G. K-12 Dugway School | N. Exchange Express (Gas Station) |
| C. Administration (Building 5330) | H. Clinic | O. IHG Desert Lodge |
| D. Post Office (Building 5326) | I. Community Center & Post Library | P. Police Station |
| E. EMS | J. Commissary | Q. Coyote Run RV Park & Campground |
| | K. Shocklee Fitness Center | R. DPG Headquarters (Building 5450) |
| | L. Fire Station | |

WEST DESERT TEST AREAS



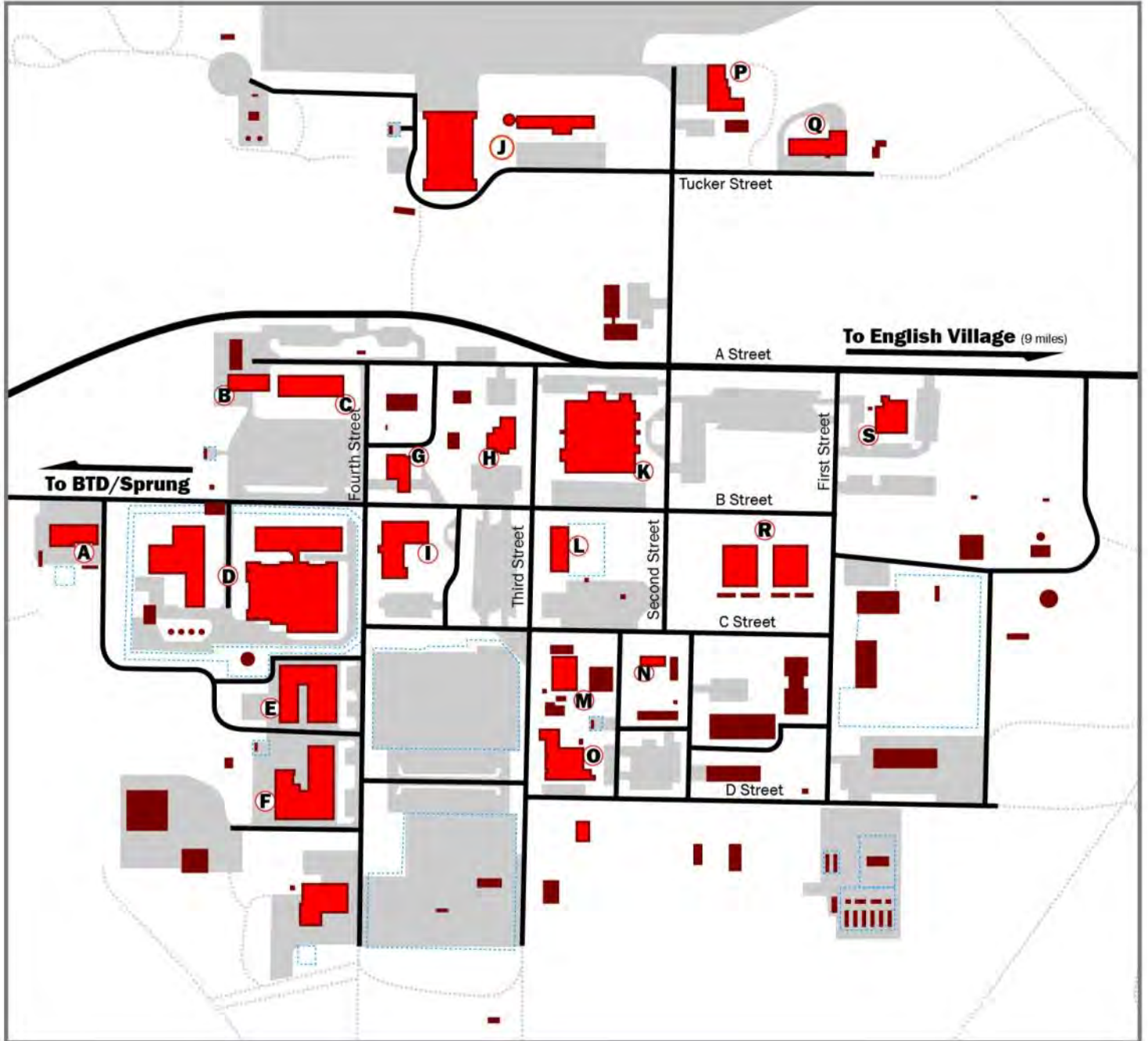
Map Key

A. BioTesting Division Test Facility
B. German Village
C. Sprung Facility
D. Tower Grid
E. Hazardous Material Test Facility

F. Energetics Defense Support Facility
G. Decon Pad
H. Joint Ambient Breeze Tunnel
I. Michael Army Airfield
J. Ditto Area

K. Reginald Kendall Combined
Chemical Test Facility
L. Melvin Bushnell Materiel
Test Facility
M. Carr Facility

DITTO AREA



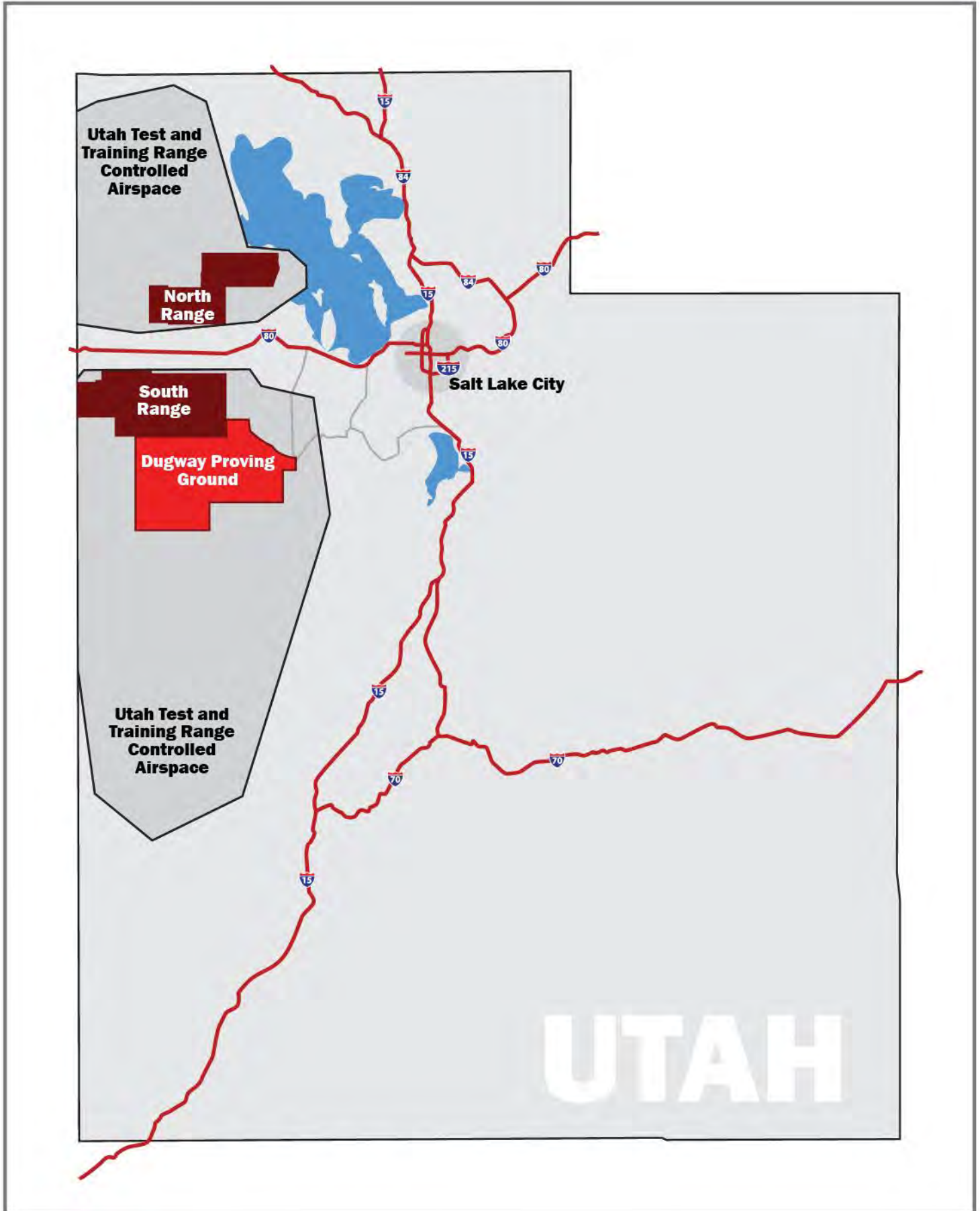
Map Key

- A. Fitness Center
- B. Tap Laundry
- C. Change House
- D. Combined Chemical Test Facility
- E. Optical Data
- F. Instrumentation

- G. Ditto Aid Station
- H. Ditto Diner
- I. Rothenberg Building
- J. Air Operations
- K. Kuddes Building
- L. Communications
- M. Jacobs Dugway

- N. Dugway Data Services Team
- O. Special Programs
- P. Fire Station
- Q. Fire Department Staging
- R. Chem/Bio Training Facilities
- S. Ditto Security

DUGWAY'S LOCATION IN UTAH



PHONE DIRECTORY

Facility	BLDG	Phone	Fax	Days Open	Hours Open
Security/Clearance					
Main Gate	N/A	435-831-2718	N/A	Monday - Sunday	24 hours
Ditto Security	N/A	435-831-5161	N/A	Monday - Sunday	24 hours
English Village Fire Station	5212	435-831-2515	435-831-3338	Monday - Sunday	24 hours
Ditto Fire Station	4026	435-831-5260	435-831-7029	Monday - Sunday	24 hours
Post Headquarters	5450	435-831-3314	N/A	Monday - Thursday	0650 - 1740
West Desert Test Center	4146	435-831-5416	435-831-5661	Monday - Thursday	0700 - 1730
Range Control		435-831-5141	435-831-5114	Variable	Variable
Safety Office	4146	435-831-5318	435-831-5597	Monday - Thursday	0700- 1730
Security Management Office	5450	435-831-3527	435-831-2499	Monday - Thursday	0700 - 1730
Commander's Hotline	N/A	435-831-3737	N/A	Monday - Sunday	24 hours
Visitor's Center	5240	435-831-2718	N/A	Monday - Thursday	0700 - 1700
Police	5240	435-831-2929 435-831-2933	435-831-2434	Monday - Sunday	24 hours
Accommodations					
IHG Army Hotels/ Desert Lodge	5233	435-831-6500	435-831-6525	Monday - Sunday	24 hours
Entertainment					
Library	5124	435-831-2178	435-831-3543	Monday - Thursday	0900 – 1900
Lounge	5230	435-831-2901	N/A	Thursday	1800-2100
Eateries					
Community Club	5230	435-831-2043	N/A	Call for reservations	
Ditto Diner	4545	435-831-5193	N/A	Breakfast, Mon - Thursday Lunch, Mon - Thursday	0600-1000 1030-1330
Commissary	5114	435-831-2164/2165	435-831-2925	Monday - Thursday Friday Saturday	1100-1900 0900-1630 1000-1730
Spiritual/Religious					
Hope Chapel	5100	435-831-2431	435-831-2432	Monday - Thursday Sunday Services	0830-1730 Call
LDS Church Bishop's Office	N/A N/A	435-831-4007 435-837-2362	N/A	Sunday	1100-1300
Miscellaneous					
Post Office	5326	435-831-4261	435-831-4261 (call first)	Monday - Friday Saturday	0900 - 1300 1330 - 1600 0900 - 1100
Army Community Services	5124	435-831-2834	435-831-2831	Monday - Thursday	0700 - 1730
Ditto Aid Station	4541	435-831-5292	435-831-5077	Monday - Thursday	0700 - 1730

PHONE DIRECTORY (CONT.)

Facility	BLDG	Phone	Fax	Days Open	Hours Open
Recreation					
Morale, Welfare, Recreation	5124	435-831-2139	435-831-2484	Monday - Thursday	0700 - 1700
Outdoor Recreation	5109	435-831-2318	435-831-2484	Monday - Thursday Friday - Sunday	0700 - 1900 0800 - 1800
Fitness Center	5109	435-831-2705	435-831-2484	Monday - Thursday Friday - Sunday	0600 - 2000 0800 - 1800
Housing					
Housing	5031	435-831-3541/3542	435-831-2771	Monday - Thursday	0650 - 1130 1220 - 1740
Housing Maintenance	5474	435-831-2200	N/A	Monday - Thursday	0650 - 1130 1220 - 1740
Cable TV	N/A	435-831-4404	435-427-3200	Monday - Friday	0800 - 1700
Health					
Health Clinic	5116	435-831-2211 911 from post	435-831-2871	Monday - Thursday	0700 - 1730
<p><i>Note: The clinic responds to emergencies at all times. After hours and weekends, services may be limited only to ambulance transport to the nearest medical facility. The nearest hospital is in Tooele.</i></p>					
Service Centers					
Exchange Express/Gas Station	5440	435-831-4773	N/A	Monday - Friday Saturday Sunday	0630 - 2000 0700 - 2000 0700 - 1900
<p><i>Note: The Exchange Express sells convenience store items as well as liquor and clothing. However, visitors may only purchase cigarettes, alcohol, appliances, electronics, or write checks with military identification.</i></p>					