

DEVENS RFTA

STORMWATER NEWSLETTER

Summer 2025



STORMWATER PROGRAM INFORMATION:

Website: Information on the Stormwater Program is available on the Devens RFTA Website under the DPW section:

<https://home.army.mil/devens/index.php/Mission%20and%20Vision/Garrison/directorate-public-works/stormwater>

Stormwater Management Program Plan: The Devens RFTA Stormwater Management Program Plan is available for review at the Devens RFTA DPW office and by request. Please contact Brian Taetzsch at brian.g.taetzsch.ctr@army.mil or 978-615-6560.

Stormwater Program Participation: Interested in finding out more about progress in the stormwater program? Attend the EQCC meetings to get updates on progress and program goals. All Devens RFTA community members are invited to attend. Information about the next EQCC meeting will be announced on the Devens RFTA website. Stay tuned for more details!

Additionally, the public comment period for the Stormwater Management Program at DRFTA is open from 1 June to 1 July 2025. If you have any questions or comments for the Stormwater Program or would like to view the current plan, please contact Brian Taetzsch at brian.g.taetzsch.ctr@army.mil.

Need to report a stormwater violation or have a program recommendation?

Email us here: DRFTAEnvironmental@army.mil

WHY IS STORMWATER IMPORTANT?

As stormwater flows over impervious surfaces it collects pollutants such as trash, chemicals, and dirt. The water flows untreated into a storm sewer system or directly into rivers, lakes, streams, wetlands, or coastal waters. Pollutants are then carried into the waterbodies we use for swimming, drinking, and fishing.

- Sediment can cloud the water and make it difficult or impossible for aquatic plants to grow.
- Excess nutrients can cause algae blooms.
- Bacteria and other pathogens can create health hazards.
- Debris can choke, suffocate, or disable aquatic life like ducks, fish, turtles, and birds.
- Household hazardous wastes like pesticides, paint, solvents, and used motor oil can poison animals and people.

HELP KEEP STORMWATER CLEAN AT WORK AND AT HOME THIS SPRING:

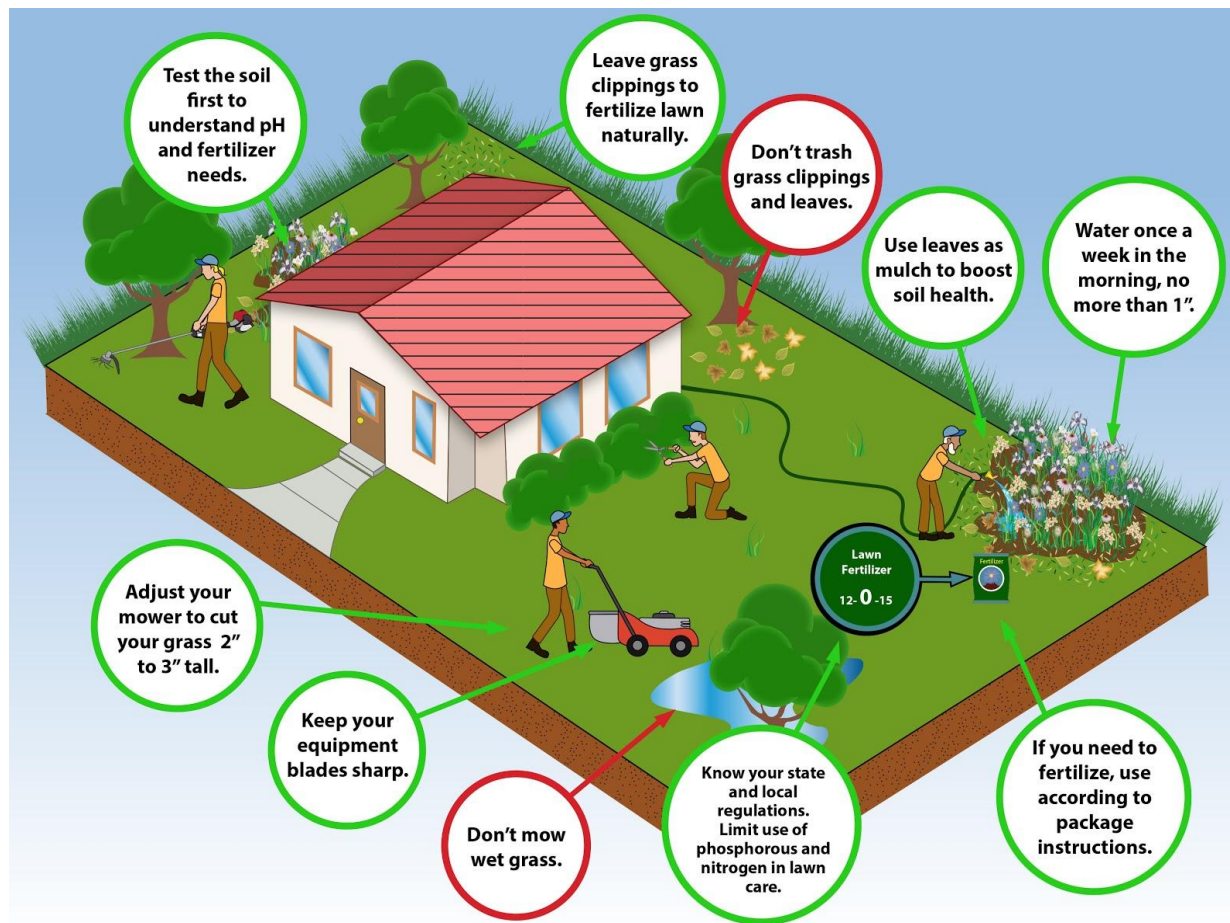
Do Your “Doody” for Clean Water:

You hate stepping in it. And fish hate swimming in it, too! Dogs produce a lot of waste which, if not disposed of properly, can end up in our waterways. Do your part to keep our waters and public areas clean and healthy! Bag your pet’s waste and throw it in a trashcan. Did you know that the average dog can produce nearly a pound of waste each day?



- Pet waste left on lawns and in public spaces is not only gross. It can be quite harmful too.
- Pet waste contains twice as much bacteria as human waste!
- If left in your yard, pet waste can kill grass and other plants.
- Adults and children who come in contact with it can get sick.
- When pet waste washes into storm drains and waterways, it can make the water unhealthy for people and wildlife.
- Pet waste in waterways can even cause algae to grow, which can harm aquatic Ecosystems downstream.

Do your "doody" in both public areas and in your yard. To learn more about pet waste and its impact on stormwater, visit the www.ThinkBlueMassachusetts.org



Under Massachusetts law, only apply fertilizer with phosphorus if:

1. A soil test shows that phosphorus is needed; or
2. During the first growing season for a newly established lawn.

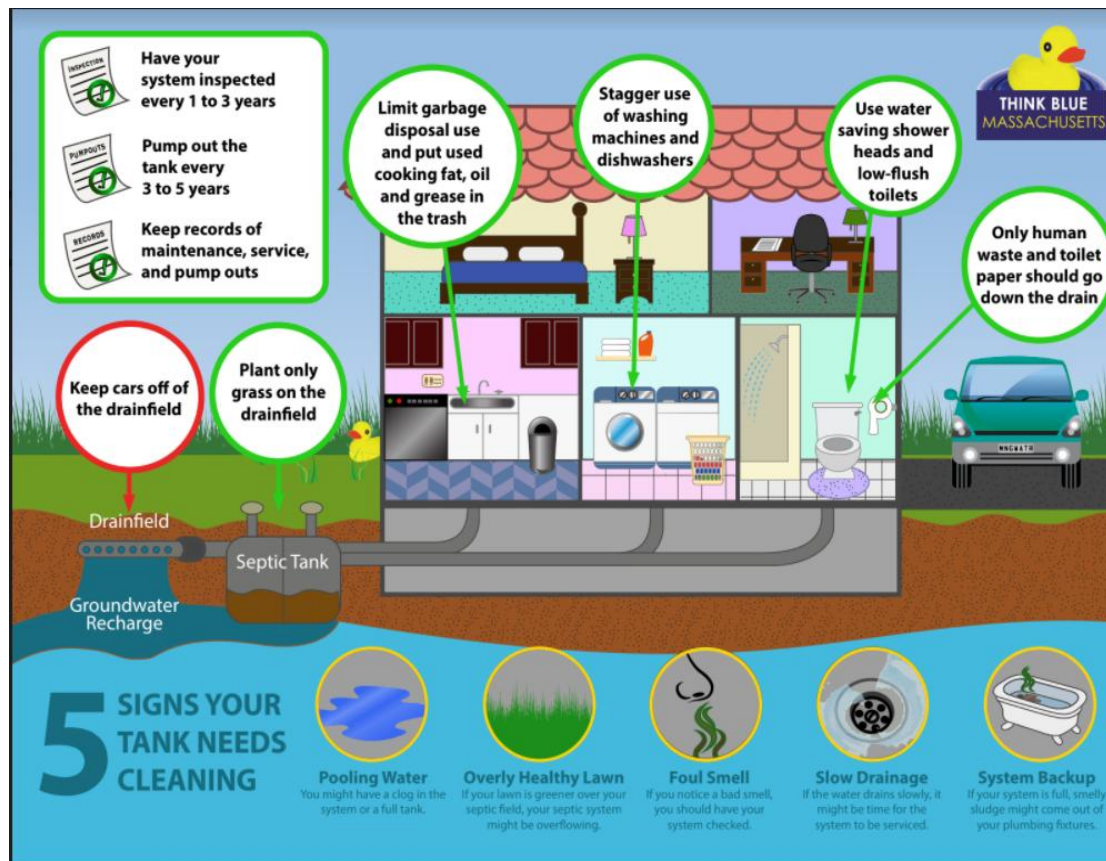
Contact the UMass Cooperative Extension Soil Nutrient Testing Laboratory to learn how to conduct a routine soil test:

<https://ag.umass.edu/services/soil-plant-nutrient-testing-laboratory/ordering-information-forms>

Clean Up Yard Waste: Clean water. It is in the bag if you do your part by disposing of yard waste properly. Keep yard waste from entering storm drains by collecting grass trimmings and leaves when mowing the lawn or raking leaves.

Visit www.thinkbluemassachusetts.org to learn how this protects our waterways.

Proper Septic System Maintenance Helps Protect Stormwater:



HELP REDUCE BACTERIA AND PATHOGENS IN STORMWATER!

- Pick up pet waste.
- Practice proper septic system maintenance to reduce bacteria and pathogens reaching catchments and water bodies.

HELP REDUCE PHOSPHORUS IN STORMWATER!

- Properly dispose of grass clippings in the spring and summer. Not down storm drains.
- Properly use slow-release and phosphorus-free fertilizers in the spring.
- Pick up pet waste all year long.
- Properly dispose of leaf litter in the fall. Not down storm drains.

HELP KEEP TRASH OUT OF STORMWATER ON DEVENS RFTA!

- Do not overfill the brown dumpsters on post.
- Do not put bags of trash on the ground next to full dumpsters.
- Don't place leaking containers in the dumpster when emptying trash.
- Though it's sure to get smelly, never hose down the inside of your dumpster.
- If the dumpster closest to your work location is full, take your trash to the next closest brown dumpster.
- Keep lids on brown dumpsters down at all times.
- Do not use 30-yard construction and demolition waste dumpsters for bagged trash.
- Use the service order form on the Garrison Website to let DPW know if you need more dumpsters at your location.



STORMWATER MANAGEMENT –

ILLICIT DISCHARGE DETECTION

What to look for:

- Potable water, chemicals, other fluids flowing in storm drains during dry weather.
- Water that is cloudy, dirty, has a sheen, contains debris or litter, has an odor.
- Sediment, trash, fuels, and oils in storm drains or flowing towards them.

Who to contact:

DPW ENVR by phone or

DRFTAEnvironmental@army.mil



POLLUTION PREVENTION:

What can you do?

- Inspect your vehicles and equipment for leaks regularly.
- Use drip pans to catch fluids and keep a cleanup kit nearby in case a spill occurs.
- Cleanup spills immediately.

Why is this necessary?

- Gasoline, oil, and grease from vehicles and equipment can wash into storm drains.
- Water that enters storm drains eventually ends up in our lakes, rivers, and streams.
- Once pollutants reach these waterways, they can harm fish and other wildlife.
- This pollution can even make our water unsafe to drink.

Other Helpful Tips:

- Keep Salt storage covered in containers and salt sheds.
- DO NOT plow or shovel snow into wetlands or catch basins.
- Keep materials from spilling by using drop cloths.
- Perform general housekeeping to keep areas clear of litter and spills.
- Do not use detergent where oil water separators are in use.
- Have more questions? Look in the Fort Devens SPCC or Stormwater Management Plans!

