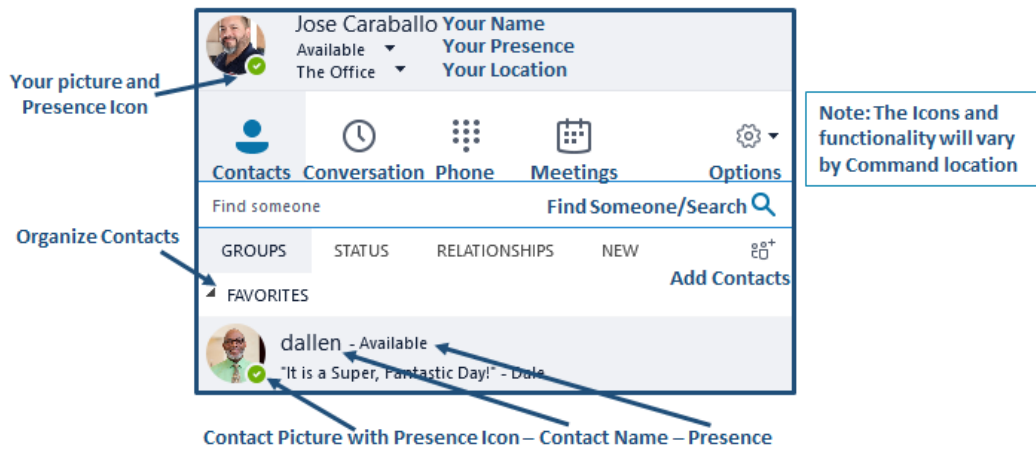


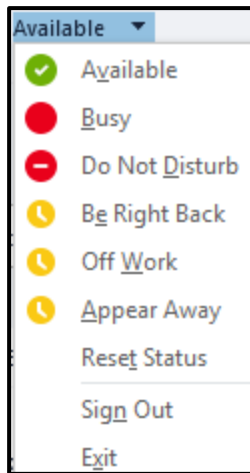
Quick Start Guide: Overview

The Quick Start Guides can be used at any time. Review the Quick Start Guide: Overview first so that you will be familiar with Skype for Business application layout and icons.

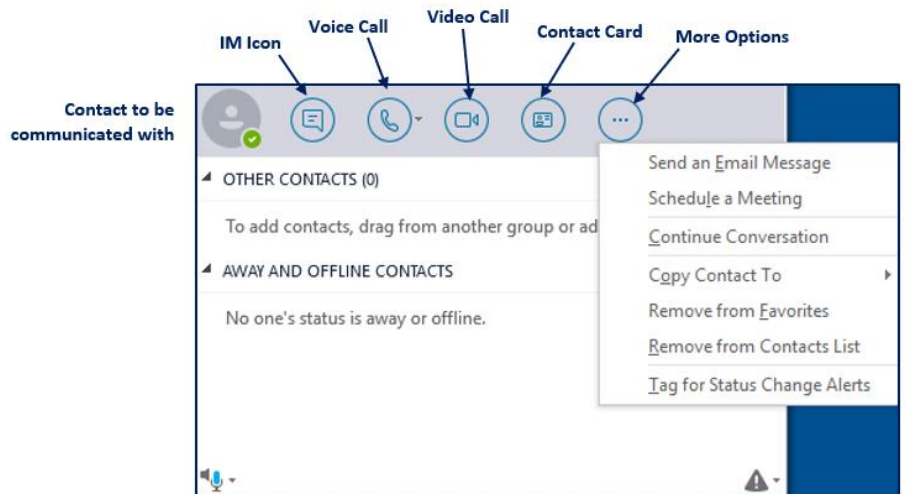
Primary Icons



Presence Options and Icons

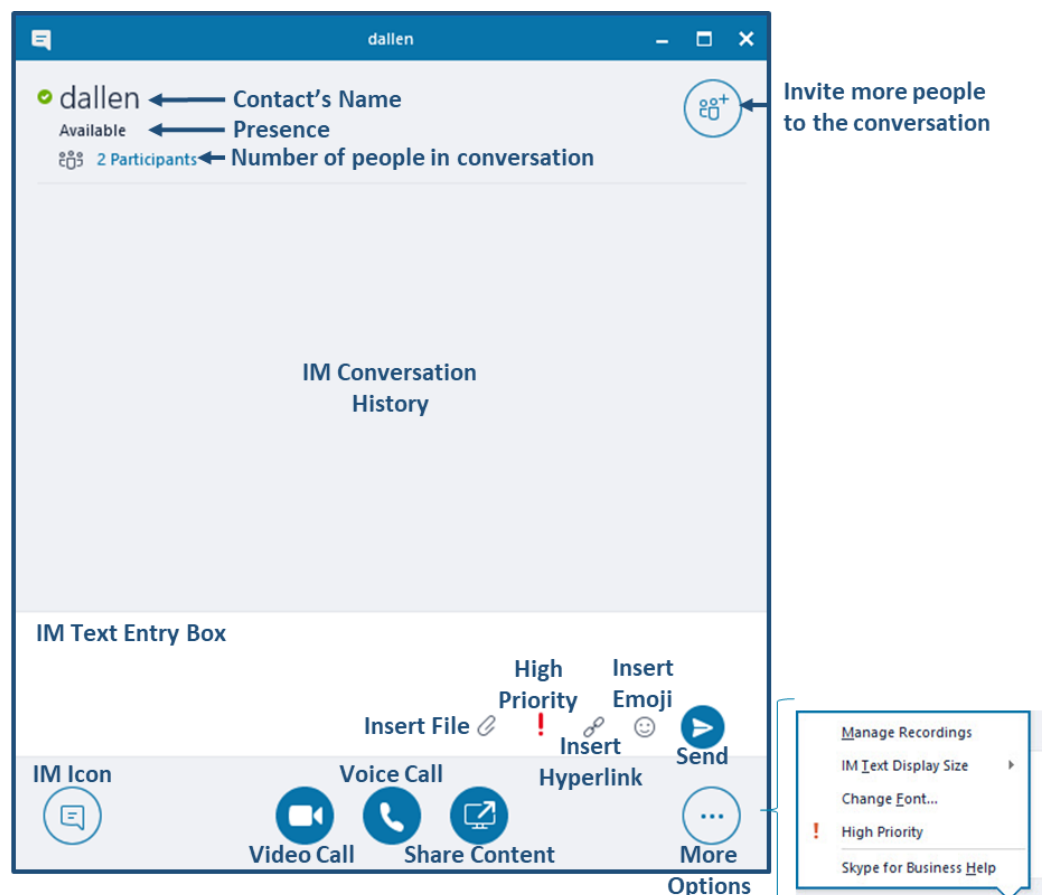


Communication Icons



IM Pop-up Window

To open the IM Pop-up Window, select the IM Icon from the Communication Bar



Users of Skype for Business are required to adhere to AR 25-2 and DoDI 8500.01.